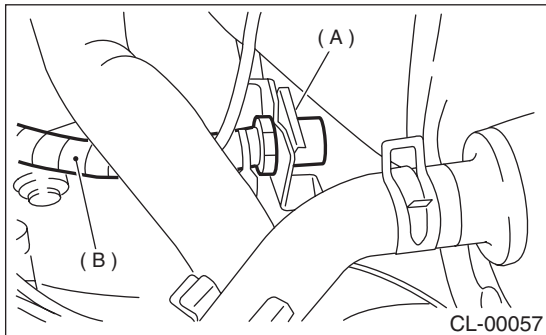


### 7. Clutch Pipe and Hose

#### A: REMOVAL

- 1) Remove the air cleaner case. (Non-turbo model) <Ref. to IN(H4SO)-6, REMOVAL, Air Cleaner Case.>
- 2) Remove the intercooler. (Turbo model) <Ref. to IN(H4DOTC)-11, REMOVAL, Intercooler.>
- 3) Drain the clutch fluid. <Ref. to CL-23, Clutch Fluid.>
- 4) Remove the clutch pipe from the clutch hose and master cylinder.
- 5) Pull out the clamp, then remove the clutch hose from bracket.



- (A) Clamp  
(B) Clutch hose

- 6) Remove the hose from operating cylinder.
- 7) Remove the bracket.

#### B: INSTALLATION

Install in the reverse order of removal.

##### NOTE:

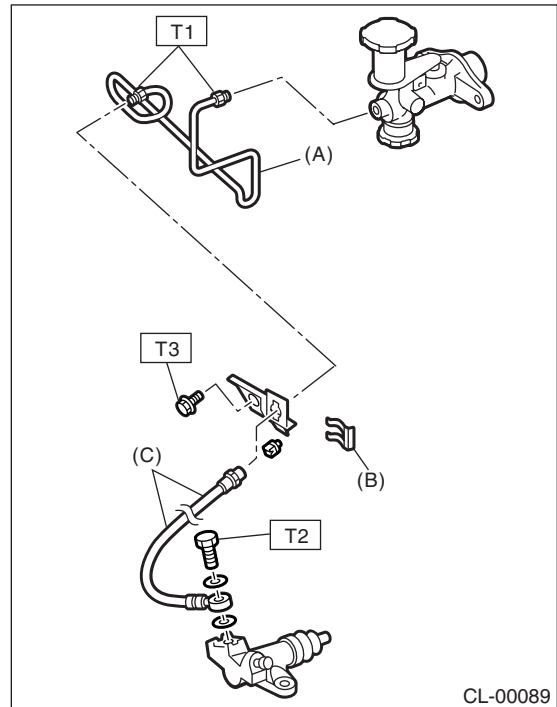
Bleed the clutch fluid. <Ref. to CL-24, Clutch Fluid Air Bleeding.>

##### Tightening torque:

**T1: 15 N·m (1.5 kgf-m, 10.8 ft-lb)**

**T2: 18 N·m (1.8 kgf-m, 13.0 ft-lb)**

**T3: 25 N·m (2.5 kgf-m, 18.1 ft-lb)**



- (A) Clutch pipe  
(B) Clip  
(C) Clutch hose

#### C: INSPECTION

Check pipes and hoses for cracks, breakage or damage. Check joints for fluid leakage. If any cracks, breakage, damage or leakage is found, repair or replace the applicable pipe or hose.