

11.Clutch Switch

A: REMOVAL

- 1) Disconnect the ground terminal from battery.
- 2) Disconnect the connector from clutch switch.
- 3) Remove the clutch switch.

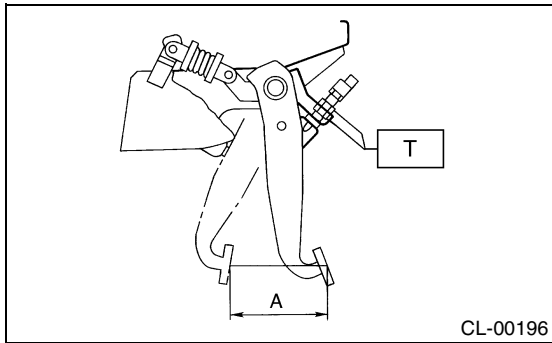
B: INSTALLATION

- 1) Move the clevis pin of the push rod right and left and hold where it moves smoothly, then measure stroke of clutch pedal.

Specified clutch pedal full stroke:A
130 — 135 mm (5.12 — 5.31 in)

Tightening torque:

T: 8 N·m (0.8 kgf-m, 5.8 ft-lb)



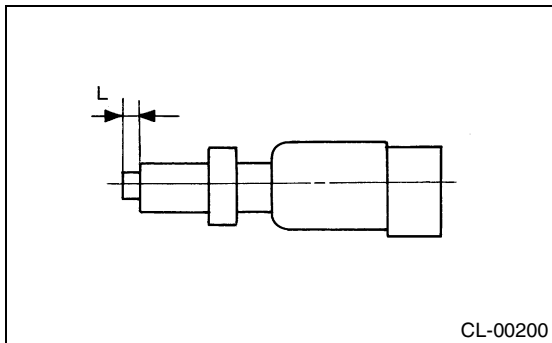
- 2) If the clutch pedal stroke is out of specification, adjust the stroke. <Ref. to CL-27, ADJUSTMENT, Clutch Pedal.>
- 3) Connect the clutch switch connector.

C: INSPECTION

- 1) If the clutch switch does not operate properly (or if it does not stop at the specified position), replace with a new one.

Specified position: L

$2^{+1.5}_{-0} \text{ mm } (0.079^{+0.059}_{-0} \text{ in})$



- 2) Check the clutch switch continuity. If continuity is not as specified, replace the switch.

- (1) Disconnect the clutch switch connector. Measure the resistance between 1 and 2 of clutch switch terminal.

Terminals/Specified resistance

When clutch pedal depressed:

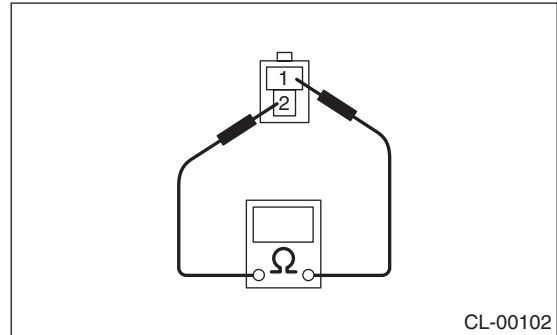
1 — 2/Less than 1Ω

Terminals/Specified resistance

When clutch pedal not depressed:

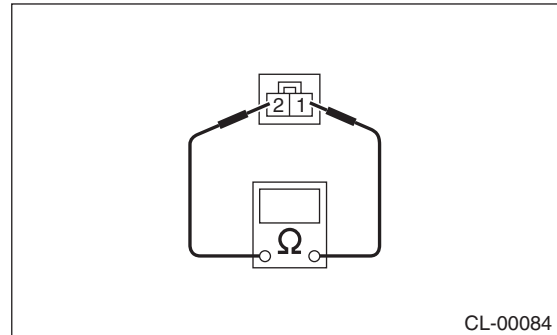
1 — 2/More than $1M\Omega$

Clutch switch (Starter interlock)



CL-00102

Clutch switch (With cruise control)



CL-00084

- (2) If not as specified, replace the clutch switch.