

READ DIAGNOSTIC TROUBLE CODE (DTC)

AUTOMATIC TRANSMISSION (DIAGNOSTICS)

7. Read Diagnostic Trouble Code (DTC)

A: OPERATION

1. WITHOUT SUBARU SELECT MONITOR

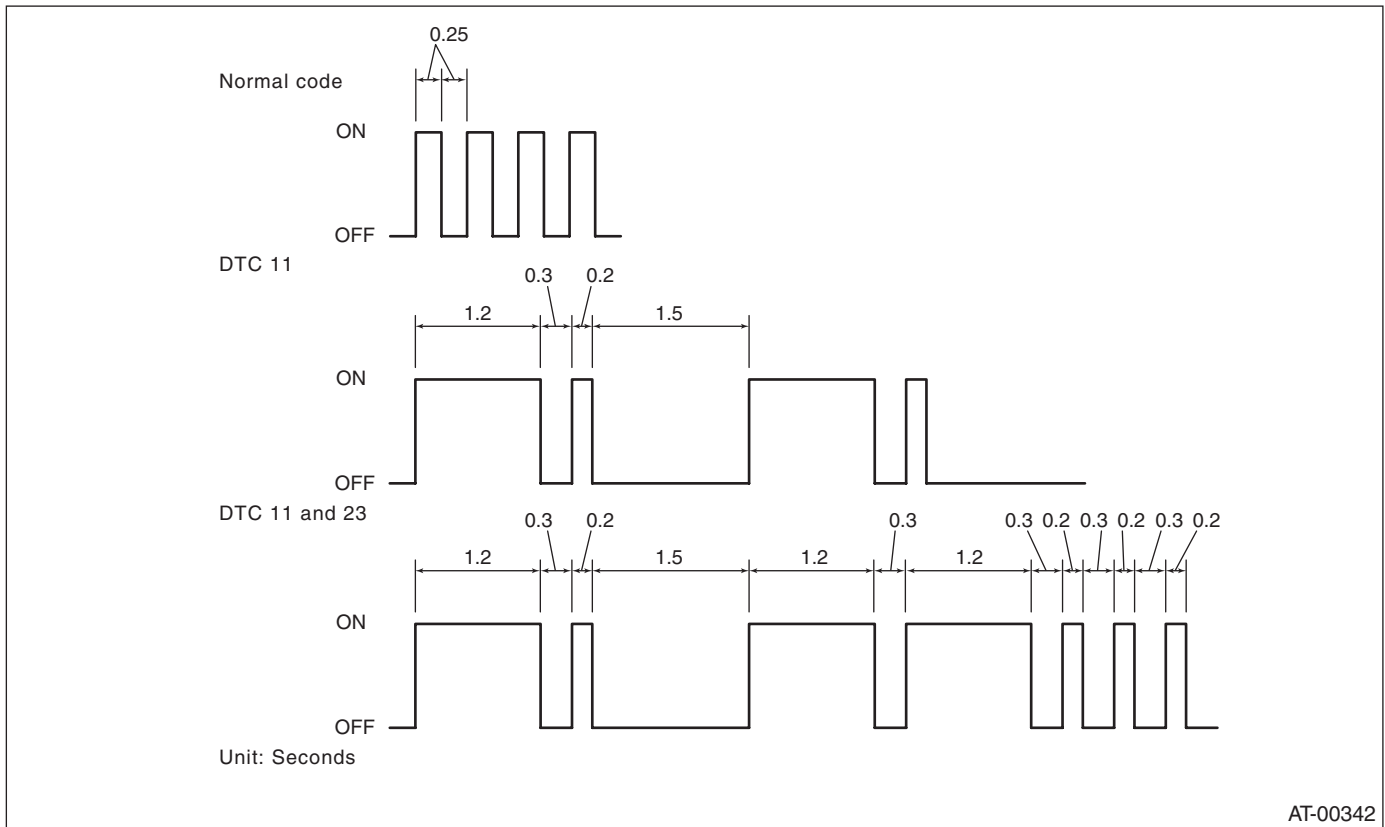
Step	Check	Yes	No
1 PERFORM READ DIAGNOSTIC TROUBLE CODE. 1)Warm-up the engine. 2)Turn the ignition switch to OFF. 3)Turn the ignition switch to ON. 4)Start the engine. 5)Drive the vehicle at speeds greater than 20 km/h (12 MPH). 6)Stop the vehicle. 7)Brake pedal depressed and move the select lever to 1 range. 8)Turn the ignition switch to OFF. 9)Turn the ignition switch to ON. 10)Move the select lever 2 range. 11)Move the select lever 1 range. 12)Move the select lever 2 range. 13)Move the select lever 3 range. 14)Move the select lever D range. Does the indicator light blink at 4-Hz intervals? NOTE: Blinks every 0.125 (1/8) seconds (until ignition switch is turned OFF).	The light blinks at 4 Hz intervals.	Repair power supply and ground circuit.<Ref. to AT-36, CHECK POWER SUPPLY AND GROUND LINE, Diagnostic Procedure for AT OIL TEMP Warning Light.>	Go to step 2.
2 CHECK INDICATOR LIGHT. Does the indicator light blink at 2-Hz intervals? NOTE: Blinks every 0.25 (1/4) seconds (until ignition switch is turned OFF).	The light blinks at 2 Hz intervals.	AT system is normal.	Go to step 3.
3 CHECK INDICATOR LIGHT. Is the diagnostic trouble code (DTC) displayed?	The diagnostic trouble code (DTC) is displayed.	Inspect the problem corresponding with diagnostic trouble code (DTC). NOTE: Record all diagnostic trouble code (DTC).	Go to step 4.
4 CHECK INDICATOR LIGHT. Does the indicator light remain illuminated?	The indicator light remains on.	Repair the AT OIL TEMP warning light circuit <Ref. to AT-31, Diagnostic Procedure for AT OIL TEMP Warning Light.>, or Inspect inhibitor switch, wiring, TCM, etc.	Calling up the diagnostic trouble code (DTC) again.

READ DIAGNOSTIC TROUBLE CODE (DTC)

AUTOMATIC TRANSMISSION (DIAGNOSTICS)

The AT OIL TEMP warning light flashes the code corresponding to the faulty part.

The long segment (1.2 sec on) indicates a “ten”, and the short segment (0.2 sec on) signifies a “one”.



2. WITH SUBARU SELECT MONITOR

Refer to SUBARU SELECT MONITOR for information about how to obtain and understand trouble codes. <Ref. to AT-22, OPERATION, Subaru Select Monitor.>