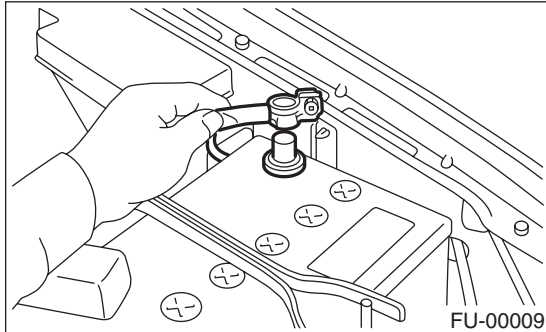


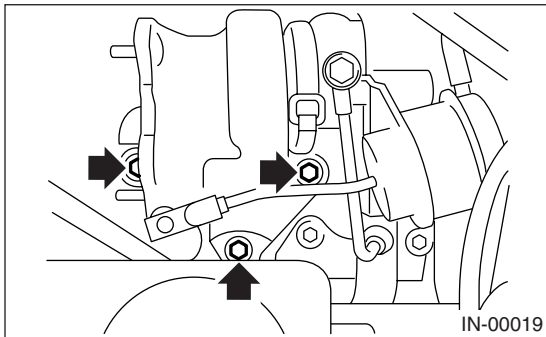
6. Turbocharger

A: REMOVAL

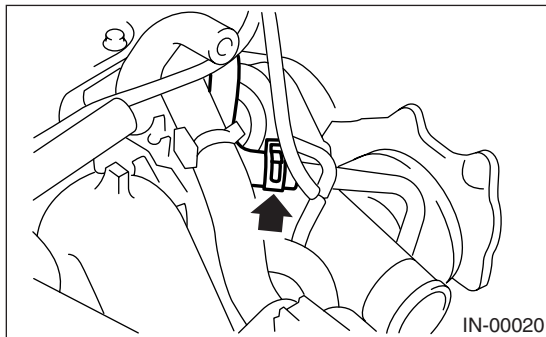
- 1) Set the vehicle on the lift.
- 2) Disconnect the ground terminal from battery.



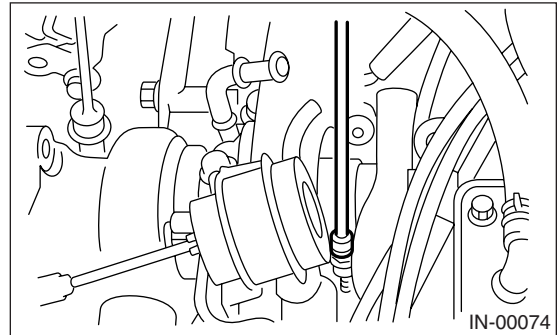
- 3) Remove the center exhaust pipe. <Ref. to EX(H4DOTC)-8, REMOVAL, Center Exhaust Pipe.>
- 4) Lower the vehicle.
- 5) Separate the turbocharger joint pipe from turbocharger.



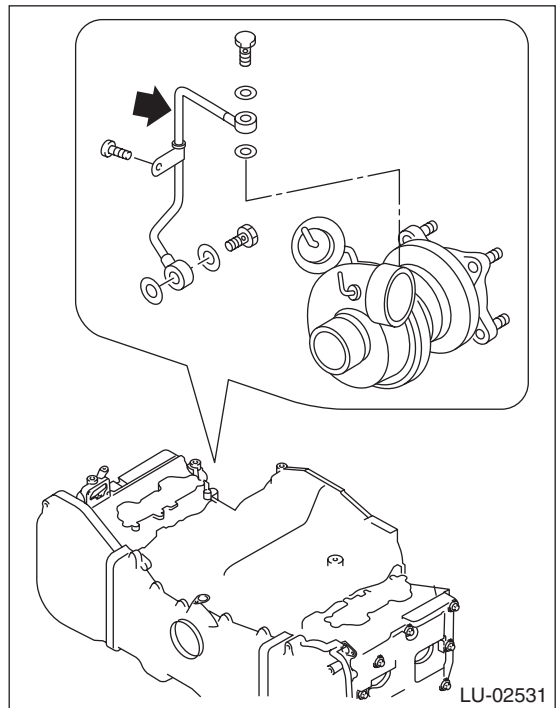
- 6) Disconnect the engine coolant hose which is connected to coolant filler tank.



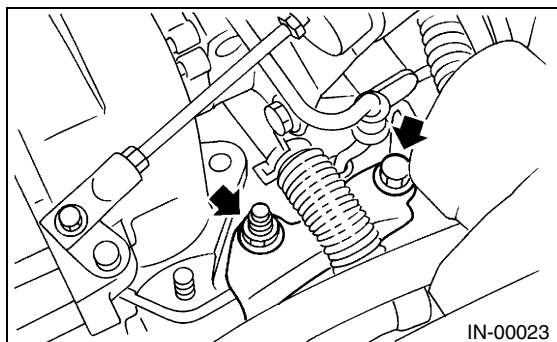
- 7) Loosen the clamp which secures turbocharger to air inlet duct.



- 8) Remove the bolt which secures bracket of oil pipe to turbocharger.
- 9) Remove the oil inlet pipe from turbocharger.



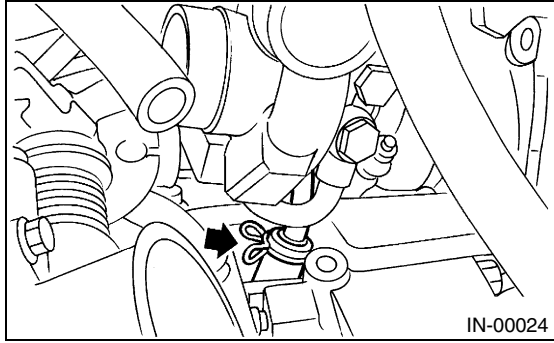
- 10) Remove the turbocharger bracket.



TURBOCHARGER

INTAKE (INDUCTION)

11) Disconnect the oil outlet hose from pipe.



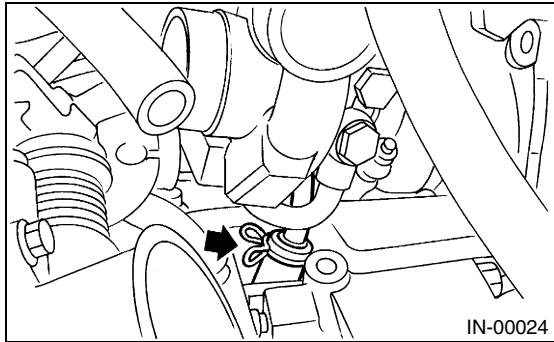
12) Take out the turbocharger from engine compartment.

B: INSTALLATION

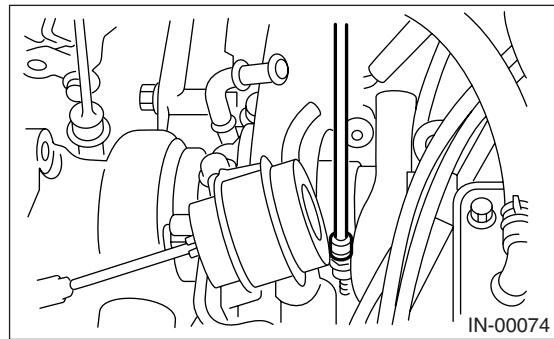
CAUTION:

When replacing the turbocharger, check the filter part of union screw for clogging. <Ref. to LU(H4SO)-22, INSPECTING UNION SCREW WITH FILTER, INSPECTION, Oil Pipe.>

1) Connect the oil outlet hose to outlet pipe.



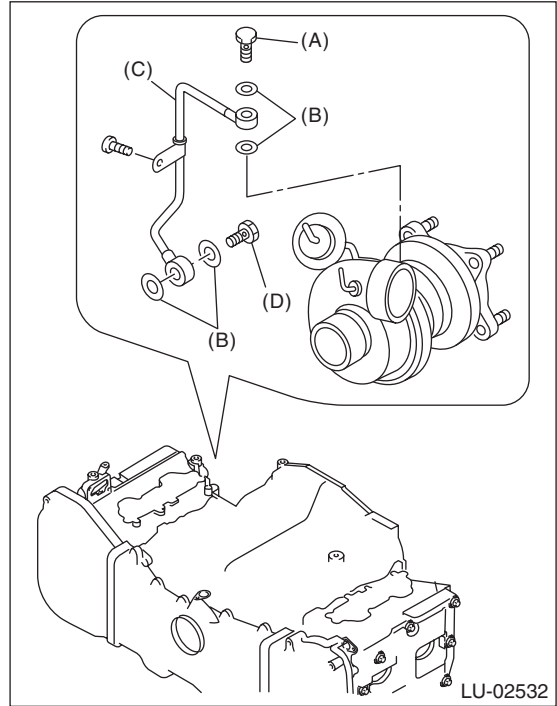
2) Install the turbocharger to air intake duct.



3) Temporarily install the oil pipe.

NOTE:

- Make sure not to mix up the union screws with filter and without filter as their installation positions are different.
- Use a new gasket.



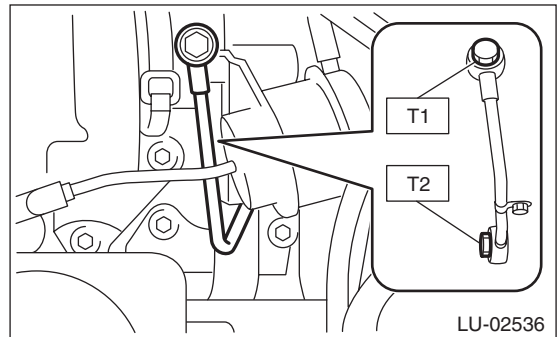
- (A) Union screw without filter (without protrusion)
- (B) Gasket
- (C) Oil inlet pipe
- (D) Union screw with filter (with protrusion)

4) Tighten the union screws of oil inlet pipe.

Tightening torque:

T1: 16 N·m (1.6 kgf-m, 11.6 ft-lb)

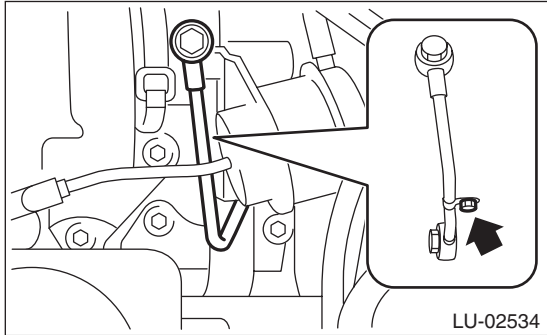
T2: 29 N·m (3.0 kgf-m, 21.7 ft-lb)



5) Tighten the bolts which hold the oil inlet pipe stay to the turbocharger.

Tightening torque:

4.9 N·m (0.50 kgf-m, 3.6 ft-lb)



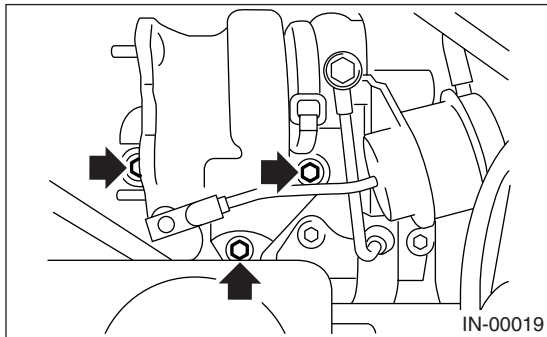
6) Install the joint pipe to turbocharger.

NOTE:

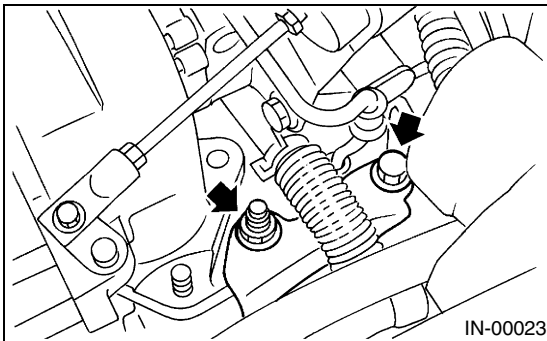
Replace the gasket with a new one.

Tightening torque:

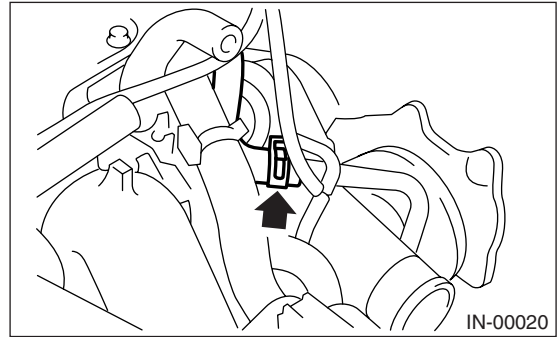
30 N·m (3.1 kgf-m, 22.4 ft-lb)



7) Install the turbocharger bracket.



8) Connect the engine coolant hose which is connected to coolant filler tank.



9) Lift-up the vehicle.

10) Install the center exhaust pipe. <Ref. to EX(H4DOTC)-9, INSTALLATION, Center Exhaust Pipe.>