

# GENERAL DESCRIPTION

## FUEL INJECTION (FUEL SYSTEMS)

---

### 1. General Description

#### A: SPECIFICATIONS

Fuel tank	Capacity	60 ℓ (15.9 US gal, 13.2 Imp gal)
	Location	Under rear seat
Fuel pump	Type	Impeller
	Shutoff discharge pressure	450 — 677 kPa (4.59 — 6.9 kg/cm <sup>2</sup> , 65.27 — 98.2 psi)
	Discharge flow	More than 130 ℓ (34.3 US gal, 28.6 Imp gal)/h [12 V at 300 kPa (3.06 kg/cm <sup>2</sup> , 43.5 psi)]
Fuel filter		Cartridge type

# GENERAL DESCRIPTION

FUEL INJECTION (FUEL SYSTEMS)

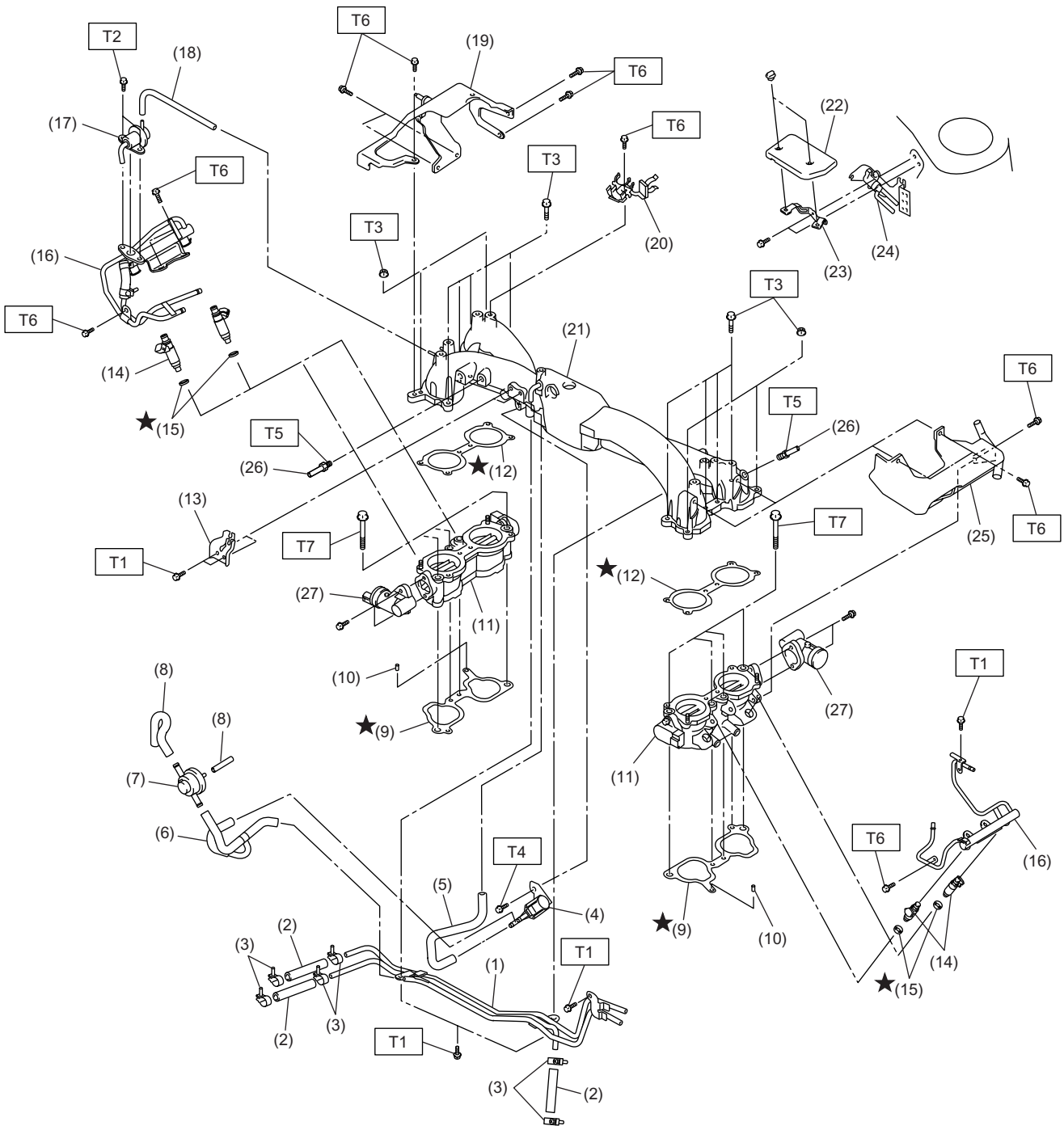
---

# GENERAL DESCRIPTION

FUEL INJECTION (FUEL SYSTEMS)

## B: COMPONENT

### 1. INTAKE MANIFOLD



FU-00775

FU(H4DOTC)-4

# GENERAL DESCRIPTION

## FUEL INJECTION (FUEL SYSTEMS)

---

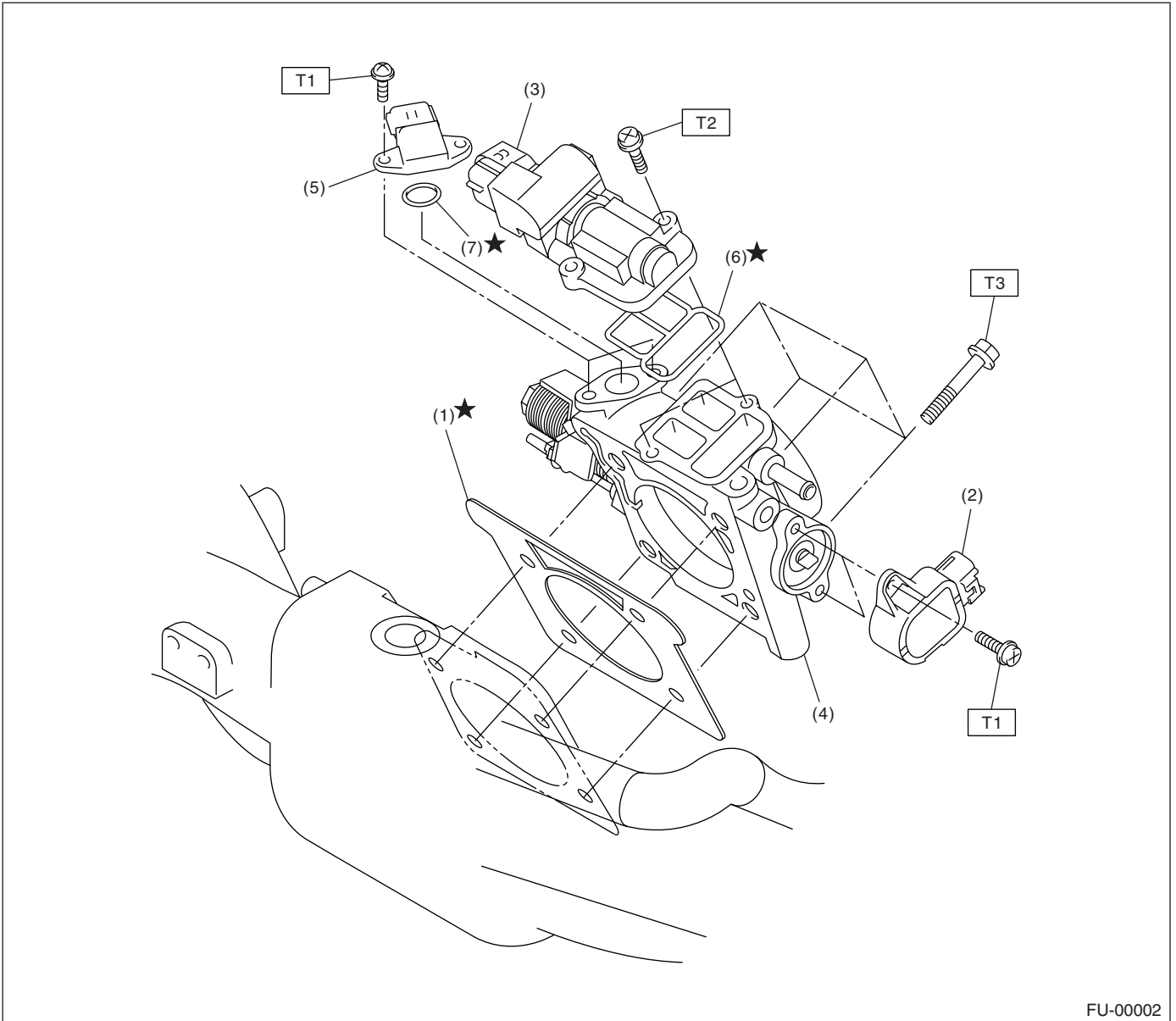
(1) Fuel pipe ASSY	(13) Accelerator cable bracket	(25) Fuel pipe protector LH
(2) Fuel hose	(14) Fuel injector	(26) Nipple
(3) Clip	(15) Insulator	(27) Tumble generator valve actuator
(4) Purge control solenoid valve	(16) Fuel injector pipe	<b><i>Tightening torque: N·m (kgf-m, ft-lb)</i></b>
(5) Vacuum hose	(17) Pressure regulator	<b><i>T1: 4.9 (0.5, 3.6)</i></b>
(6) Vacuum control hose	(18) Pressure regulator hose	<b><i>T2: 6.4 (0.65, 4.7)</i></b>
(7) Purge valve	(19) Fuel pipe protector RH	<b><i>T3: 8.25 (0.84, 6.1)</i></b>
(8) Purge hose	(20) Blow-by hose stay	<b><i>T4: 16 (1.6, 11.8)</i></b>
(9) Intake manifold gasket	(21) Intake manifold	<b><i>T5: 17 (1.73, 12.5)</i></b>
(10) Guide pin	(22) Solenoid valve cover	<b><i>T6: 19 (1.94, 13.7)</i></b>
(11) Tumble generator valve ASSY	(23) Solenoid valve cover stay	<b><i>T7: 25 (2.5, 18.1)</i></b>
(12) Tumble generator valve gasket	(24) Wastegate control solenoid valve ASSY	

---

# GENERAL DESCRIPTION

FUEL INJECTION (FUEL SYSTEMS)

## 2. AIR INTAKE SYSTEM



FU-00002

- (1) Gasket
- (2) Throttle position sensor
- (3) Idle air control solenoid valve
- (4) Throttle body

- (5) Pressure sensor
- (6) Gasket
- (7) O-ring

**Tightening torque: N·m (kgf·m, ft·lb)**

**T1: 1.6 (0.16, 1.2)**

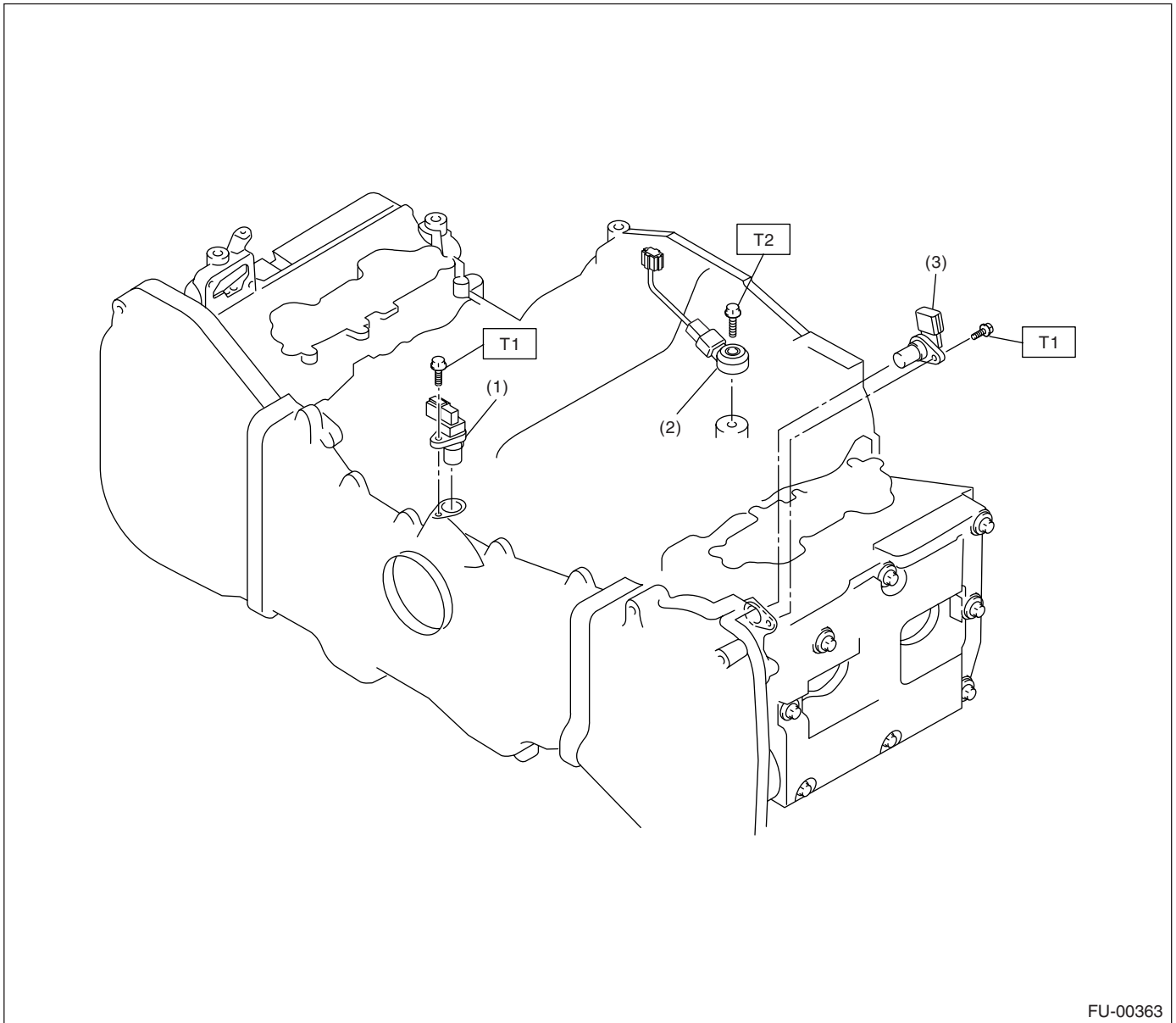
**T2: 2.8 (0.29, 2.1)**

**T3: 22 (2.2, 15.9)**

# GENERAL DESCRIPTION

FUEL INJECTION (FUEL SYSTEMS)

## 3. CRANKSHAFT POSITION, CAMSHAFT POSITION AND KNOCK SENSORS



- (1) Crankshaft position sensor
- (2) Knock sensor

- (3) Camshaft position sensor

**Tightening torque: N·m (kgf·m, ft·lb)**

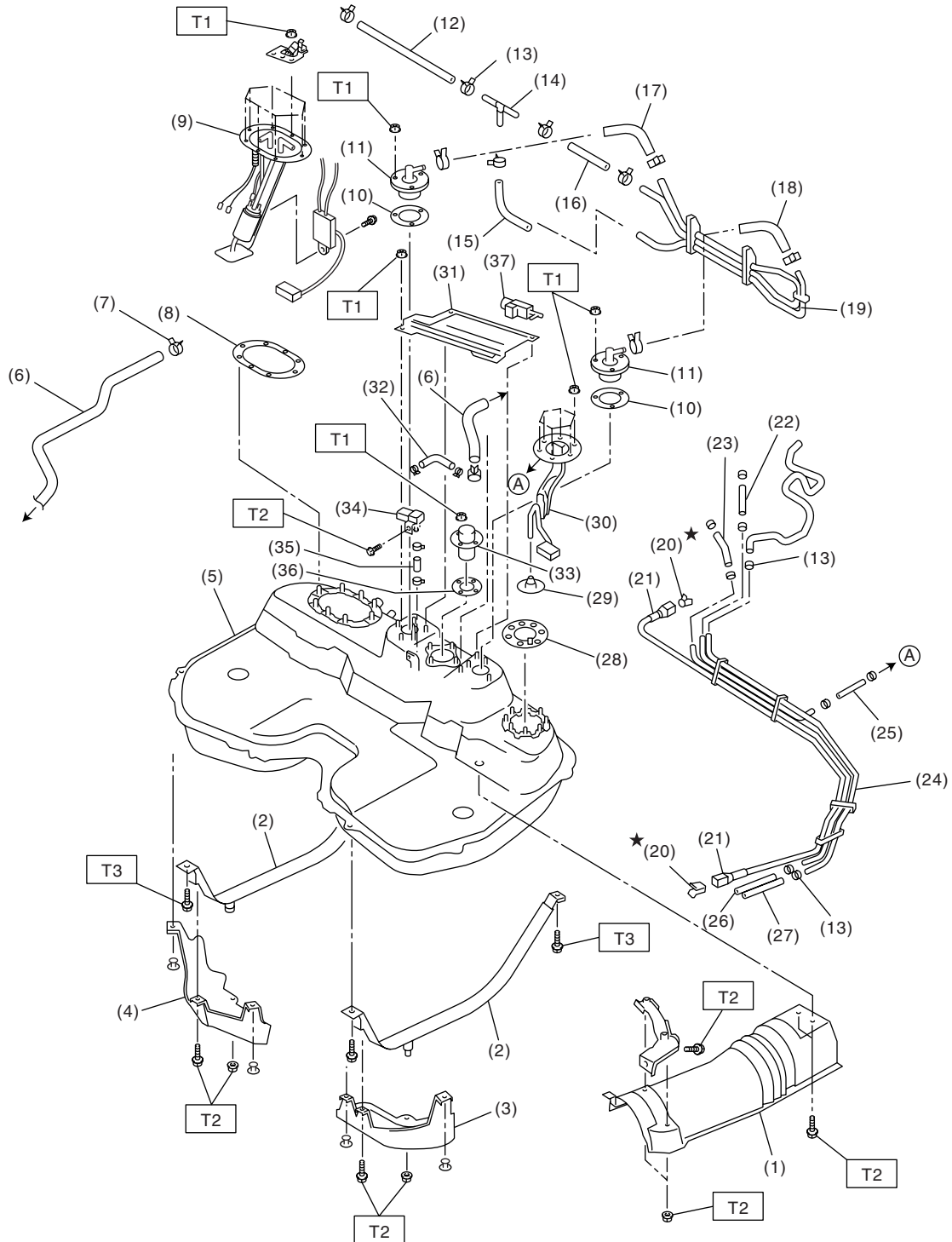
**T1: 6.4 (0.65, 4.7)**

**T2: 24 (2.4, 17.4)**

# GENERAL DESCRIPTION

## FUEL INJECTION (FUEL SYSTEMS)

### 4. FUEL TANK



FU-00249

# GENERAL DESCRIPTION

## FUEL INJECTION (FUEL SYSTEMS)

---

(1) Heat shield cover	(15) Evaporation hose C	(29) Jet pump filter
(2) Fuel tank band	(16) Evaporation hose B	(30) Fuel sub level sensor
(3) Protector LH	(17) Evaporation hose D	(31) Protector cover
(4) Protector RH	(18) Evaporation hose E	(32) Vent valve hose
(5) Fuel tank	(19) Evaporation pipe ASSY	(33) Vent valve
(6) Canister hose A	(20) Retainer	(34) Fuel tank pressure sensor
(7) Clamp	(21) Quick connector	(35) Fuel tank pressure sensor hose
(8) Fuel damper	(22) Jet pump hose A	(36) Vent valve gasket
(9) Fuel pump ASSY	(23) Fuel return hose A	(37) Fuel tank sensor control valve
(10) Fuel cut valve gasket	(24) Fuel pipe ASSY	
(11) Fuel cut valve	(25) Jet pump hose B	<hr/> <b>Tightening torque: N·m (kgf-m, ft-lb)</b>
(12) Evaporation hose A	(26) Fuel return hose B	<b>T1: 4.4 (0.45, 3.3)</b>
(13) Clip	(27) Evaporation hose F	<b>T2: 7.4 (0.75, 5.4)</b>
(14) Joint pipe	(28) Fuel sub level sensor gasket	<b>T3: 33 (3.4, 25)</b>

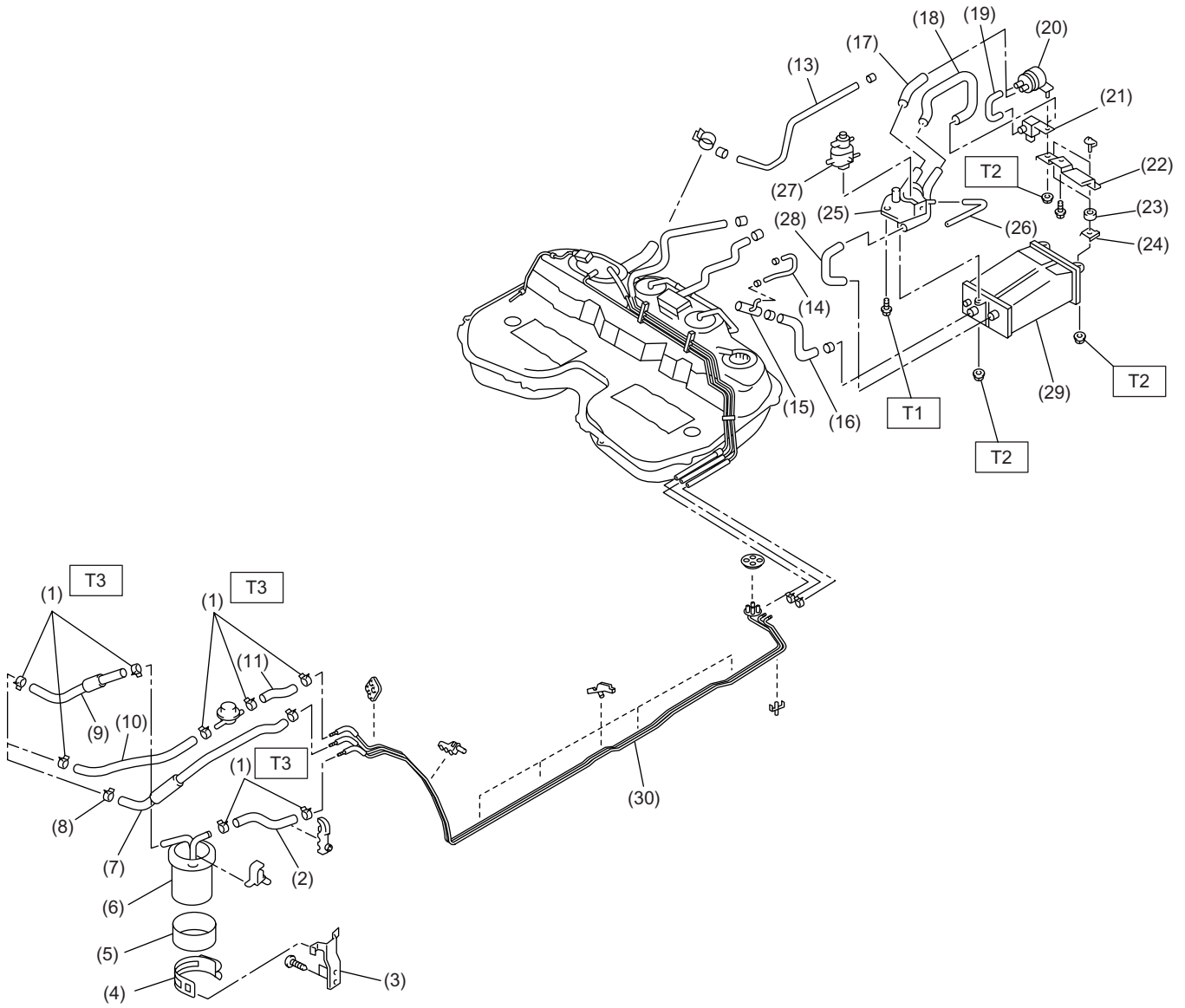
---



# GENERAL DESCRIPTION

## FUEL INJECTION (FUEL SYSTEMS)

### 5. FUEL LINE



FU-00777

# GENERAL DESCRIPTION

## FUEL INJECTION (FUEL SYSTEMS)

---

(1) Clamp	(13) Evaporation hose J	(25) Canister holder
(2) Fuel delivery hose A	(14) Evaporation hose K	(26) Evaporation hose L
(3) Fuel filter bracket	(15) Joint pipe	(27) Pressure control solenoid valve
(4) Fuel filter holder	(16) Canister hose A	(28) Canister hose B
(5) Fuel filter cup	(17) Air filter hose A	(29) Canister
(6) Fuel filter	(18) Drain valve hose	(30) Fuel pipe ASSY
(7) Evaporation hose	(19) Air filter hose B	
(8) Clip	(20) Drain filter	
(9) Fuel delivery hose B	(21) Drain valve	
(10) Fuel return hose A	(22) Canister upper bracket	
(11) Fuel return hose B	(23) Cushion rubber	
(12) Fuel damper	(24) Canister lower bracket	

---

***Tightening torque: N·m (kgf-m, ft-lb)***

***T1: 25 (2.5, 18.1)***

***T2: 23 (2.3, 16.6)***

***T3: 1.25 (0.13, 0.94)***

---



# GENERAL DESCRIPTION

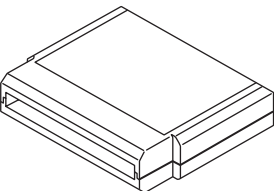

FUEL INJECTION (FUEL SYSTEMS)

## C: CAUTION

- Wear working clothing, including a cap, protective goggles, and protective shoes during operation.
- Remove contamination including dirt and corrosion before removal, installation or disassembly.
- Keep the disassembled parts in order and protect them from dust or dirt.
- Before removal, installation or disassembly, be sure to clarify the failure. Avoid unnecessary removal, installation, disassembly, and replacement.

- Be careful not to burn your hands, because each part on the vehicle is hot after running.
- Be sure to tighten fasteners including bolts and nuts to the specified torque.
- Place shop jacks or safety stands at the specified points.
- Before disconnecting electrical connectors of sensors or units, be sure to disconnect negative terminal from battery.
- Place “NO FIRE” signs near the working area.
- Be careful not to spill fuel on the floor.

## D: PREPARATION TOOL

ILLUSTRATION	TOOL NUMBER	DESCRIPTION	REMARKS
 <p>ST24082AA210</p>	24082AA210 (Newly adopted tool)	CARTRIDGE	Troubleshooting for electrical system.
 <p>ST22771AA030</p>	22771AA030	SELECT MONITOR KIT	Troubleshooting for electrical systems. <ul style="list-style-type: none"> <li>• English: 22771AA030 (Without printer)</li> <li>• German: 22771AA070 (Without printer)</li> <li>• French: 22771AA080 (Without printer)</li> <li>• Spanish: 22771AA090 (Without printer)</li> </ul>