

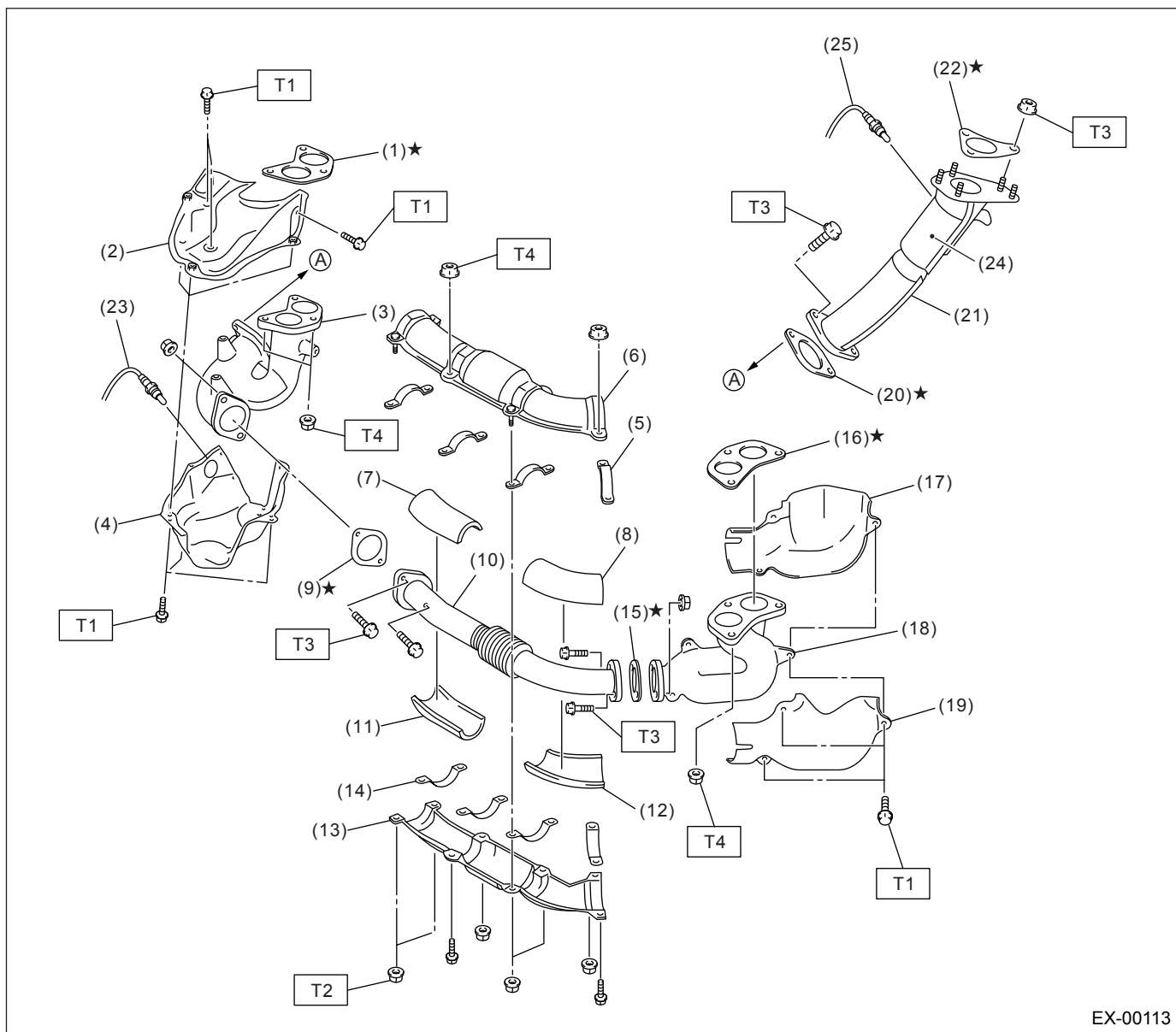
GENERAL DESCRIPTION

EXHAUST

1. General Description

A: COMPONENT

1. FRONT EXHAUST PIPE



EX-00113

GENERAL DESCRIPTION

EXHAUST

(1) Gasket	(11) Front exhaust pipe lower insulator (RH)	(21) Turbocharger joint pipe
(2) Upper exhaust manifold cover (RH)	(12) Front exhaust pipe lower insulator (LH)	(22) Gasket
(3) Exhaust manifold (RH)	(13) Front exhaust pipe lower cover	(23) Front oxygen (A/F) sensor
(4) Lower exhaust manifold cover (RH)	(14) Front exhaust pipe lower clamp	(24) Precatalytic converter
(5) Front exhaust pipe upper clamp	(15) Gasket	(25) Exhaust temperature sensor
(6) Front exhaust pipe upper cover	(16) Gasket	
(7) Front exhaust pipe upper insulator (RH)	(17) Upper exhaust manifold cover (LH)	
(8) Front exhaust pipe upper insulator (LH)	(18) Exhaust manifold (LH)	
(9) Gasket	(19) Lower exhaust manifold cover (LH)	
(10) Front exhaust pipe	(20) Gasket	

Tightening torque: N·m (kgf-m, ft-lb)

T1: 19 (1.9, 13.7)

T2: 25 (2.5, 18.1)

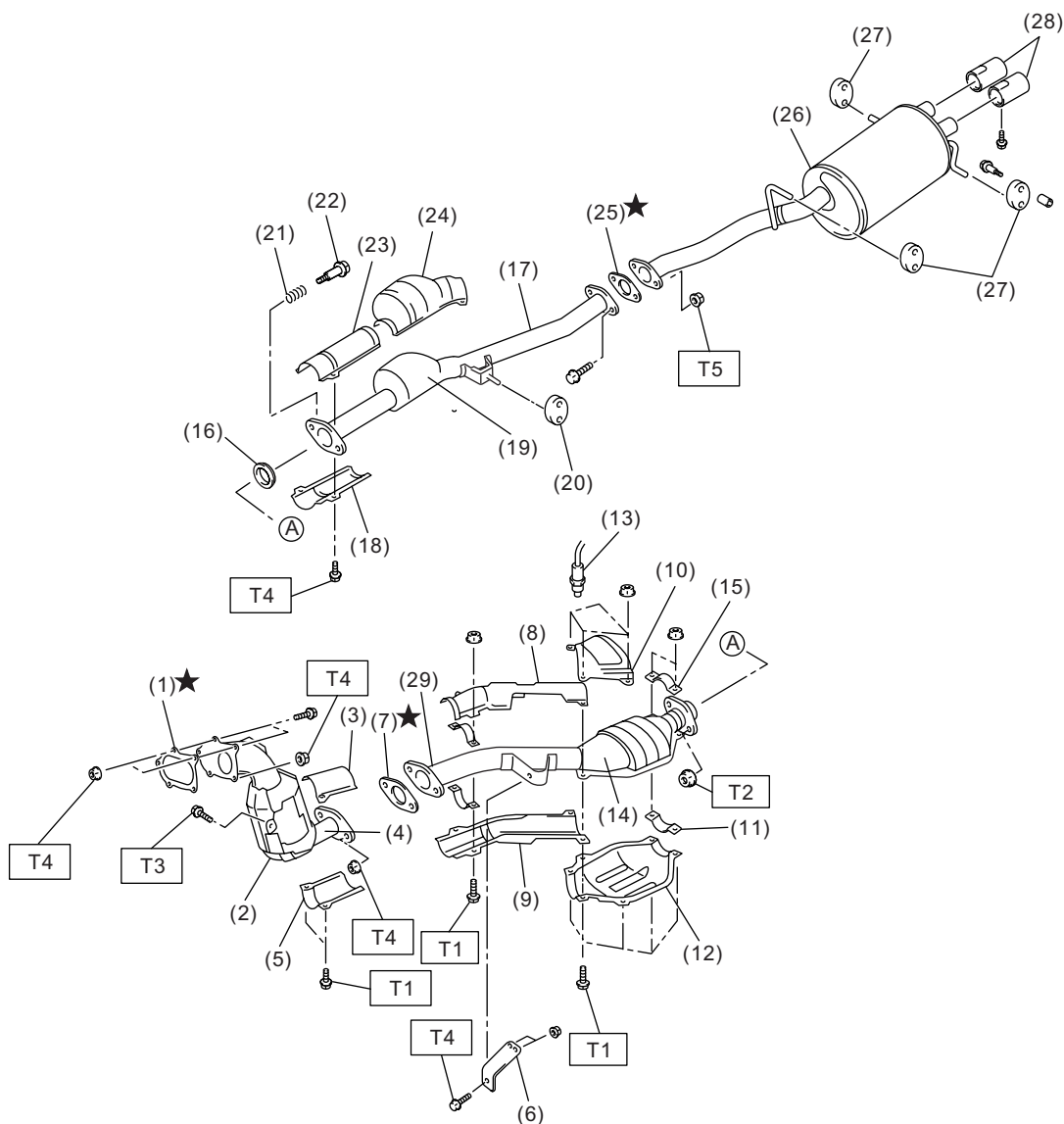
T3: 35 (3.6, 26.0)

T4: 40 (4, 28.9)

GENERAL DESCRIPTION

EXHAUST

2. CENTER AND REAR EXHAUST PIPE, AND MUFFLER



EX-00114

(1) Gasket	(13) Rear oxygen sensor	(24) Upper rear exhaust pipe cover (Rear)
(2) Front catalytic converter	(14) Rear catalytic converter	(25) Gasket
(3) Upper center pipe cover (Front)	(15) Upper clamp	(26) Muffler
(4) Center exhaust pipe (Front)	(16) Gasket	(27) Cushion
(5) Lower center pipe cover (Front)	(17) Rear exhaust pipe	(28) Muffler cutter
(6) Bracket	(18) Lower rear exhaust pipe cover (Front)	(29) Center exhaust pipe (Rear)
(7) Gasket	(19) Chamber	
(8) Upper center pipe cover (Rear)	(20) Cushion	
(9) Lower center pipe cover (Rear)	(21) Spring	
(10) Upper rear catalytic converter cover	(22) Bolt	
(11) Lower clamp	(23) Upper rear exhaust pipe cover (Front)	
(12) Lower rear catalytic converter cover		

Tightening torque: N·m (kgf-m, ft-lb)

T1: 13 (1.3, 9.6)

T2: 18 (1.8, 13.0)

T3: 30 (3.1, 22.4)

T4: 35 (3.6, 26.0)

T5: 48 (4.9, 35.4)

B: CAUTION

- Wear working clothing, including a cap, protective goggles, and protective shoes during operation.
- Remove contamination including dirt and corrosion before removal, installation or disassembly.
- Keep the disassembled parts in order and protect them from dust or dirt.
- Before removal, installation or disassembly, be sure to clarify the failure. Avoid unnecessary removal, installation, disassembly, and replacement.
- Be careful not to burn your hands, because each part on the vehicle is hot after running.
- Be sure to tighten fasteners including bolts and nuts to the specified torque.
- Place shop jacks or safety stands at the specified points.
- Before disconnecting electrical connectors of sensors or units, be sure to disconnect the negative terminal from battery.