

GENERAL DESCRIPTION

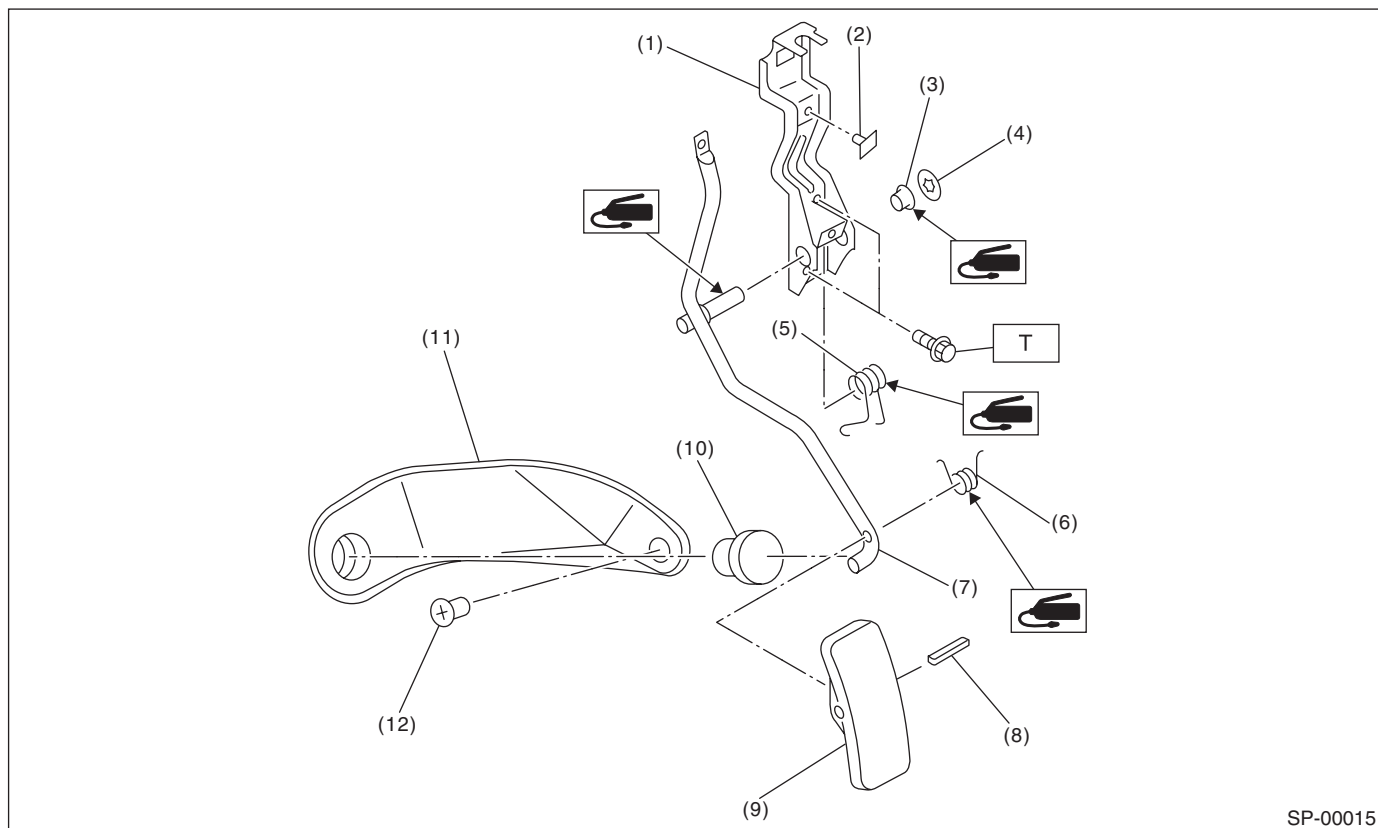
SPEED CONTROL SYSTEMS

1. General Description

A: SPECIFICATIONS

Accelerator pedal	Free play	At pedal pad	0 — 4 mm (0 — 0.16 in)
	Stroke	At pedal pad	52 — 57 mm (2.05 — 2.24 in)

B: COMPONENT



SP-00015

- | | | |
|-------------------------|------------------------------|------------------------|
| (1) Accelerator bracket | (6) Accelerator pedal spring | (11) Accelerator plate |
| (2) Stopper | (7) Accelerator pedal lever | (12) Clip |
| (3) Bushing | (8) Spring pin | |
| (4) Clip | (9) Accelerator pedal | |
| (5) Accelerator spring | (10) Accelerator stopper | |

Tightening torque: N·m (kgf-m, ft-lb)
T: 18 (1.8, 13.0)

C: CAUTION

- Wear working clothing, including a cap, protective goggles, and protective shoes during operation.
- Remove contamination including dirt and corrosion before removal, installation or disassembly.
- Keep the disassembled parts in order and protect them from dust or dirt.
- Before removal, installation or disassembly, be sure to clarify the failure. Avoid unnecessary removal, installation, disassembly, and replacement.
- Be careful not to burn your hands, because each part on the vehicle is hot after running.
- Be sure to tighten fasteners including bolts and nuts to the specified torque.
- Place shop jacks or safety stands at the specified points.
- Before disconnecting electrical connectors of sensors or units, be sure to disconnect the ground cable from battery.