

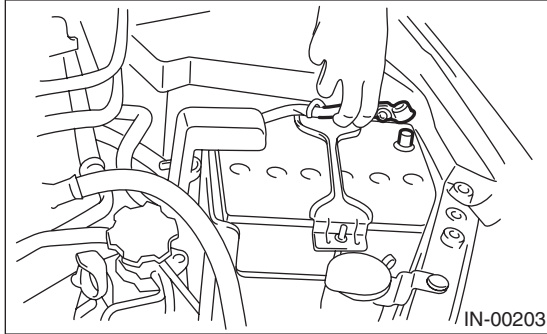
7. Oil Pipe

A: REMOVAL

NOTE:

The oil pipe is installed on turbo models.

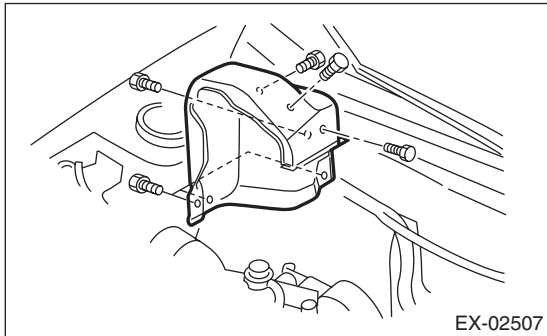
1) Disconnect the ground cable from battery.



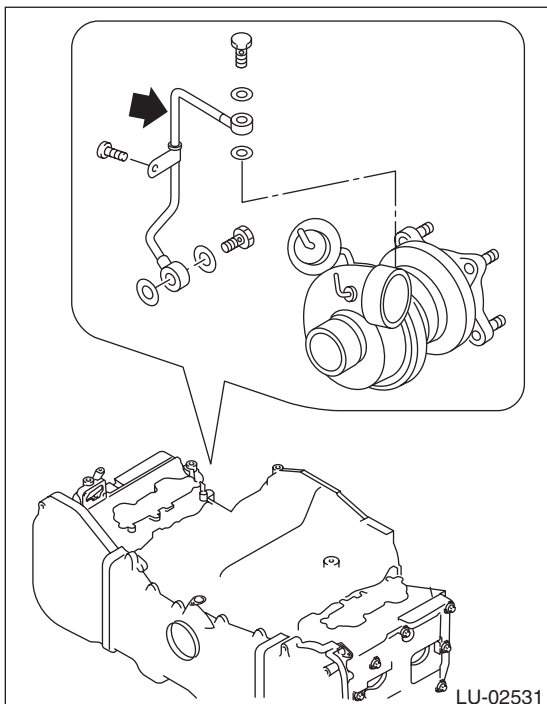
2) Remove the intercooler. <Ref. to IN(H4DOTC)-11, REMOVAL, Intercooler.>

3) Remove the intercooler bracket RH.

4) Remove the turbocharger upper cover.



5) Remove the oil inlet pipe from the turbocharger.



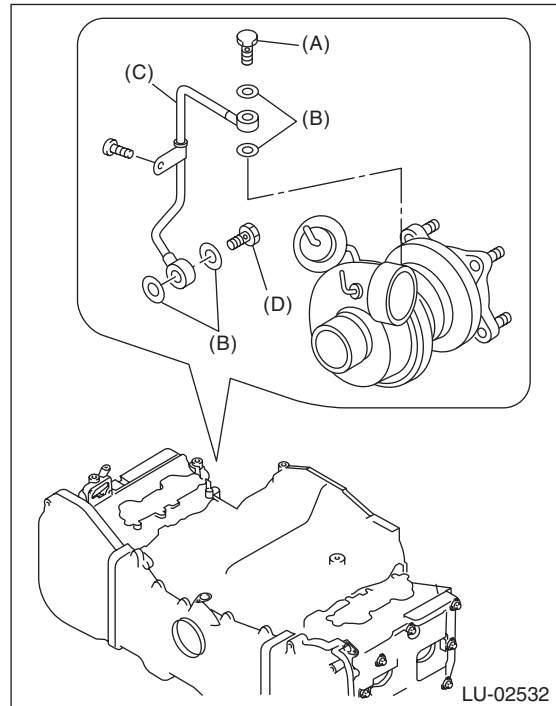
B: INSTALLATION

1) Inspect the union screw with filter. <Ref. to LU(H4SO)-22, INSPECTING UNION SCREW WITH FILTER, INSPECTION, Oil Pipe.>

2) Temporarily install the oil pipe.

NOTE:

- Make sure not to mix up the union screws with filter and without filter as their installation positions are different.
- Use a new gasket.



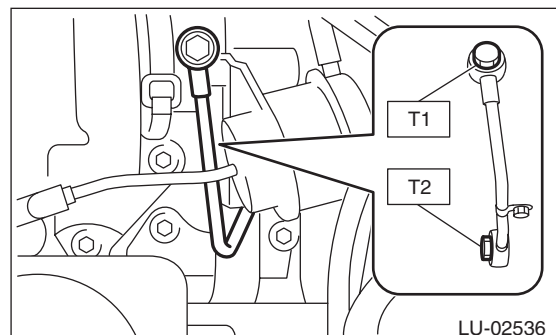
- (A) Union screw without filter (without protrusion)
- (B) Gasket
- (C) Oil inlet pipe
- (D) Union screw with filter (with protrusion)

3) Tighten the union screws of oil inlet pipe.

Tightening torque:

T1: 16 N·m (1.6 kgf-m, 11.6 ft-lb)

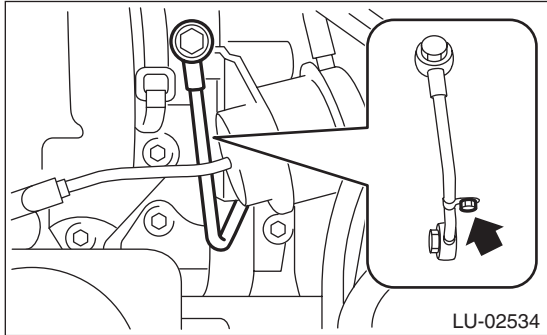
T2: 29 N·m (3.0 kgf-m, 21.7 ft-lb)



4) Tighten the bolts which hold the oil inlet pipe stay to the turbocharger.

Tightening torque:

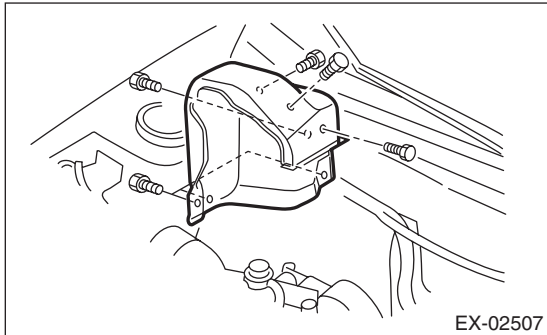
4.9 N·m (0.50 kgf-m, 3.6 ft-lb)



5) Install the turbocharger upper cover.

Tightening torque:

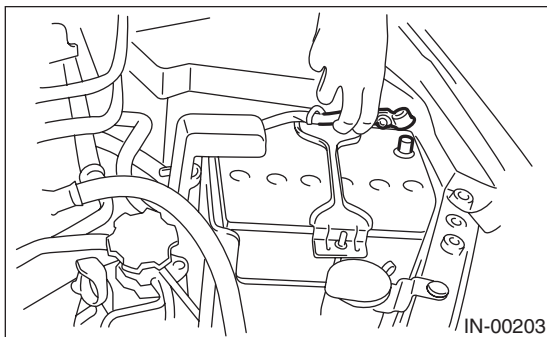
7.5 N·m (0.8 kgf-m, 5.5 ft-lb)



6) Install the intercooler bracket RH.

7) Install the intercooler. <Ref. to IN(H4DOTC)-12, INSTALLATION, Intercooler.>

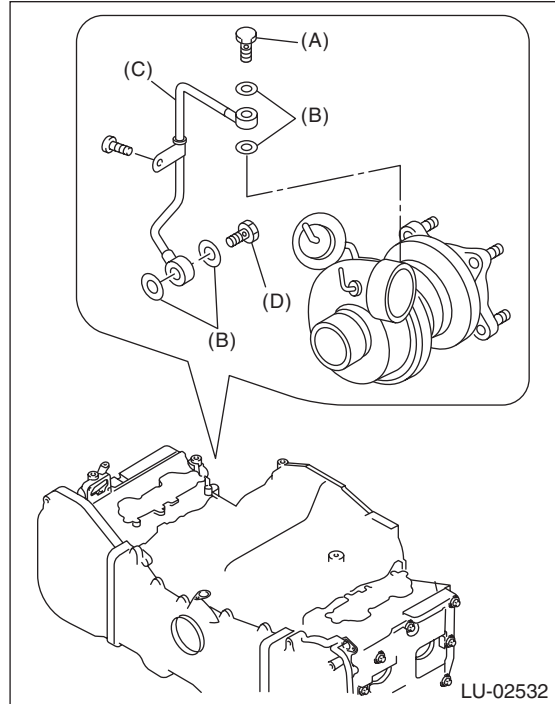
8) Connect the ground cable to battery.



C: INSPECTION

1. INSPECTING UNION SCREW WITH FILTER

Check the filter part of union screw for clogging or damage, and if defective, replace the union screw with filter with a new part.



(A) Union screw without filter (without protrusion)

(B) Gasket

(C) Oil inlet pipe

(D) Union screw with filter (with protrusion)

2. OTHER INSPECTIONS

1) Check that the oil pipe and union screw have no deformation, cracks and other damages.

2) Check that there are no oil leaks or oil oozing from the oil pipe attachment section.