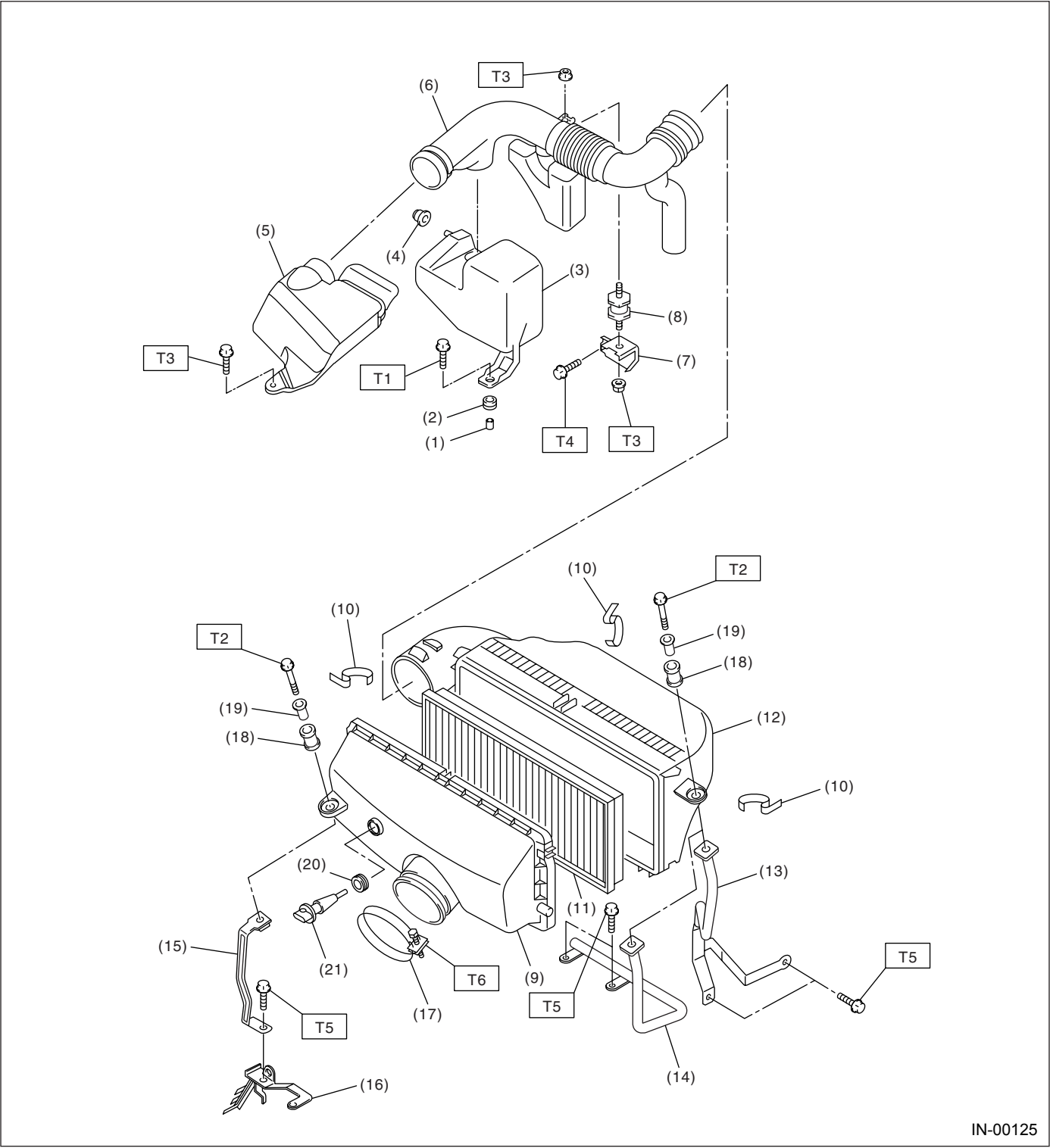


# GENERAL DESCRIPTION

INTAKE (INDUCTION)

## 1. General Description

### A: COMPONENT



IN(H4SO)-2

## GENERAL DESCRIPTION

INTAKE (INDUCTION)

(1) Spacer	(11) Air cleaner element	(21) Intake air temperature sensor
(2) Bushing	(12) Air cleaner case B	
(3) Resonator chamber	(13) Stay LH (MT vehicles)	<b><i>Tightening torque: N·m (kgf-m, ft-lb)</i></b>
(4) Cushion	(14) Stay LH (AT vehicles)	<b><i>T1: 33 (3.4, 24.6)</i></b>
(5) Air intake duct A	(15) Stay RH	<b><i>T2: 6.5 (0.66, 4.8)</i></b>
(6) Air intake duct B	(16) Engine harness bracket	<b><i>T3: 7.5 (0.76, 5.5)</i></b>
(7) Bracket	(17) Clamp	<b><i>T4: 14 (1.4, 10)</i></b>
(8) Cushion	(18) Bushing	<b><i>T5: 16 (1.6, 11.6)</i></b>
(9) Air cleaner case A	(19) Spacer	<b><i>T6: 3 (0.3, 2.2)</i></b>
(10) Clip	(20) Grommet	

## GENERAL DESCRIPTION

### INTAKE (INDUCTION)

---

#### **B: CAUTION**

- Wear working clothing, including a cap, protective goggles, and protective shoes during operation.
- Remove contamination including dirt and corrosion before removal, installation or disassembly.
- Keep the disassembled parts in order and protect them from dust or dirt.
- Before removal, installation or disassembly, be sure to clarify the failure. Avoid unnecessary removal, installation, disassembly, and replacement.
- Be careful not to burn your hands, because each part on the vehicle is hot after running.
- Be sure to tighten fasteners including bolts and nuts to the specified torque.
- Place shop jacks or safety stands at the specified points.
- Before disconnecting electrical connectors of sensors or units, be sure to disconnect the ground cable from battery.