

GENERAL DESCRIPTION

FUEL INJECTION (FUEL SYSTEMS)

1. General Description

A: SPECIFICATIONS

Item		Specification
Fuel tank	Capacity	60 ℓ (15.9 US gal, 13.2 Imp gal)
	Location	Under rear seat
Fuel pump	Type	Impeller
	Shutoff discharge pressure	370 — 677 kPa (3.77 — 6.9 kg/cm ² , 53.6 — 98 psi)
	Discharge flow	More than 65 ℓ (17.2 US gal, 14.3 Imp gal)/h [12 V at 300 kPa (3.06 kg/cm ² , 43.5 psi)]
Fuel filter		Cartridge type

GENERAL DESCRIPTION

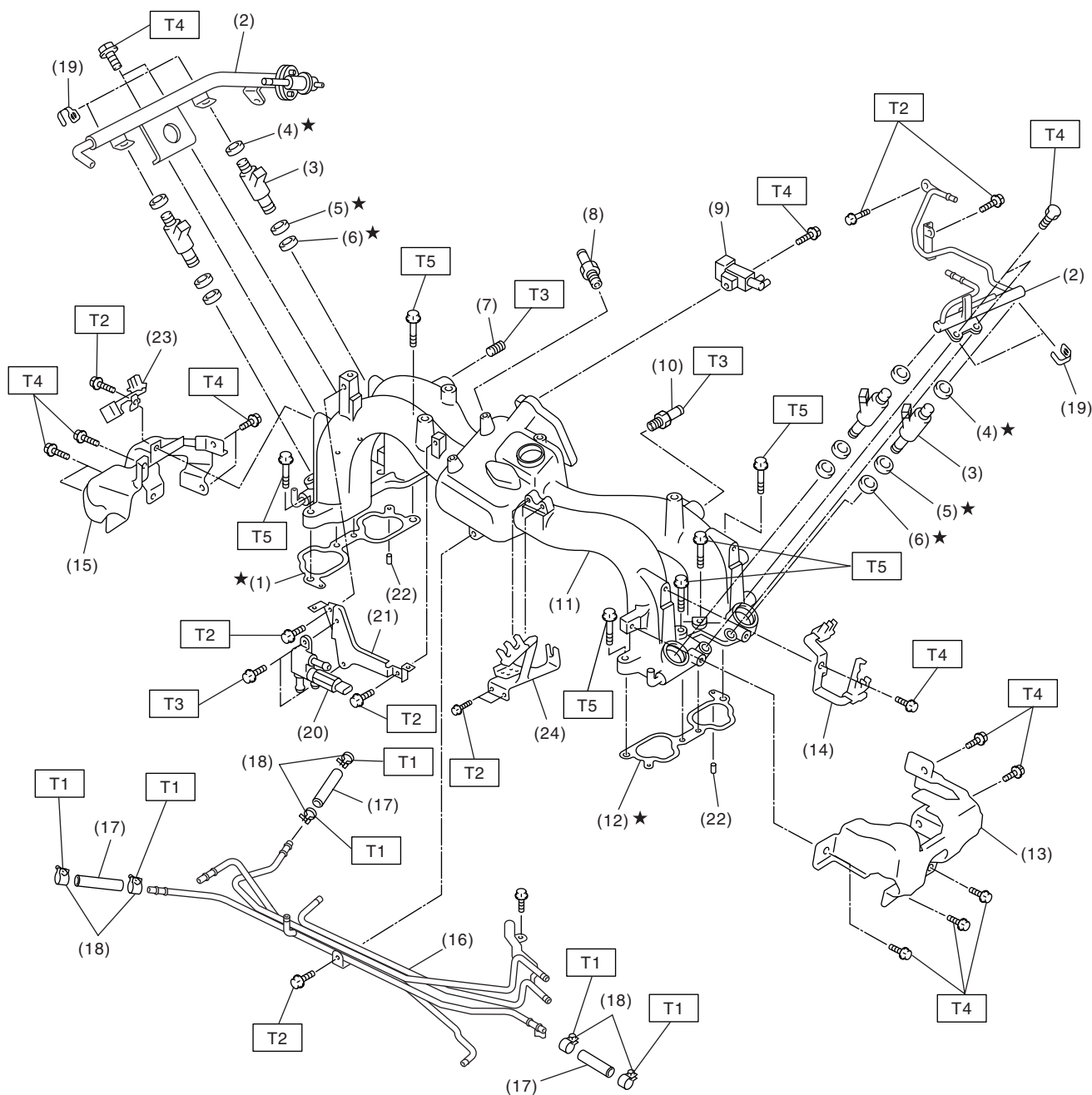
FUEL INJECTION (FUEL SYSTEMS)

GENERAL DESCRIPTION

FUEL INJECTION (FUEL SYSTEMS)

B: COMPONENT

1. INTAKE MANIFOLD



FU-00246

GENERAL DESCRIPTION

FUEL INJECTION (FUEL SYSTEMS)

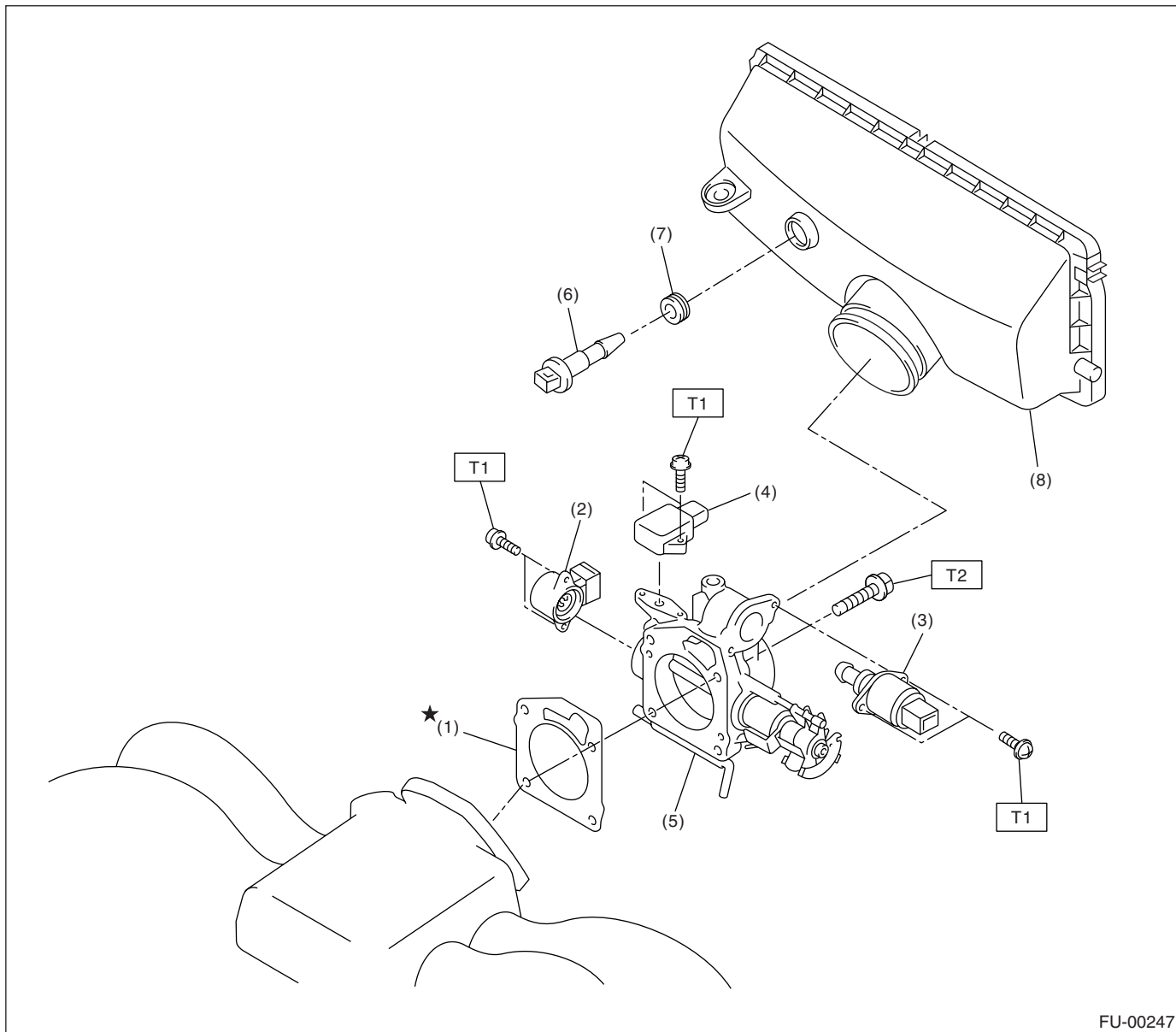
(1) Intake manifold gasket RH	(12) Intake manifold gasket LH	(22) Guide pin
(2) Fuel injector pipe	(13) Fuel pipe protector LH	(23) Plug cord holder RH
(3) Fuel injector	(14) Plug cord holder LH	(24) Accelerator cable bracket
(4) O-ring	(15) Fuel pipe protector RH	
(5) O-ring	(16) Fuel pipe assembly	
(6) O-ring	(17) Fuel hose	
(7) Plug	(18) Clip	
(8) Nipple	(19) Clip	
(9) Purge control solenoid valve	(20) Air assist injector solenoid valve	
(10) Nipple	(21) Air assist injector solenoid valve bracket	
(11) Intake manifold		

Tightening torque: N·m (kgf-m, ft-lb)***T1: 1.5 (0.15, 1.1)******T2: 5.0 (0.51, 3.7)******T3: 17 (1.7, 12.5)******T4: 19 (1.9, 13.7)******T5: 25 (2.5, 18.1)***

GENERAL DESCRIPTION

FUEL INJECTION (FUEL SYSTEMS)

2. AIR INTAKE SYSTEM



- (1) Gasket
- (2) Throttle position sensor
- (3) Idle air control solenoid valve
- (4) Pressure sensor

- (5) Throttle body
- (6) Intake air temperature sensor
- (7) Grommet
- (8) Air cleaner case

Tightening torque: N·m (kgf-m, ft-lb)

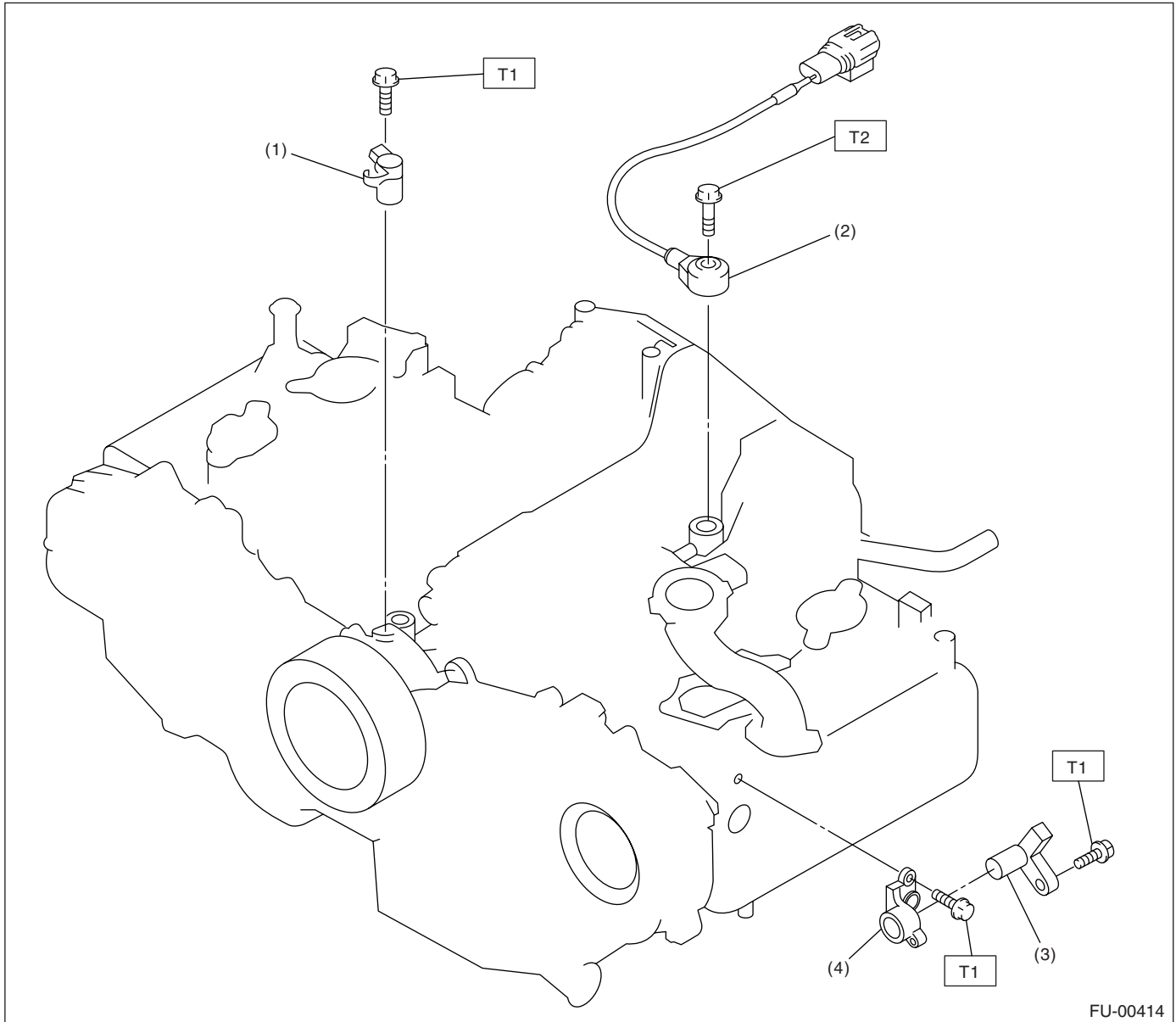
T1: 1.6 (0.16, 1.2)

T2: 22 (2.2, 15.9)

GENERAL DESCRIPTION

FUEL INJECTION (FUEL SYSTEMS)

3. CRANKSHAFT POSITION, CAMSHAFT POSITION AND KNOCK SENSORS



- (1) Crankshaft position sensor
- (2) Knock sensor
- (3) Camshaft position sensor

- (4) Camshaft position sensor support

Tightening torque: N·m (kgf-m, ft-lb)

T1: 6.4 (0.65, 4.7)

T2: 24 (2.4, 17.4)

FUEL INJECTION (FUEL SYSTEMS)

[illegible]

FU(H4SO)-8

GENERAL DESCRIPTION

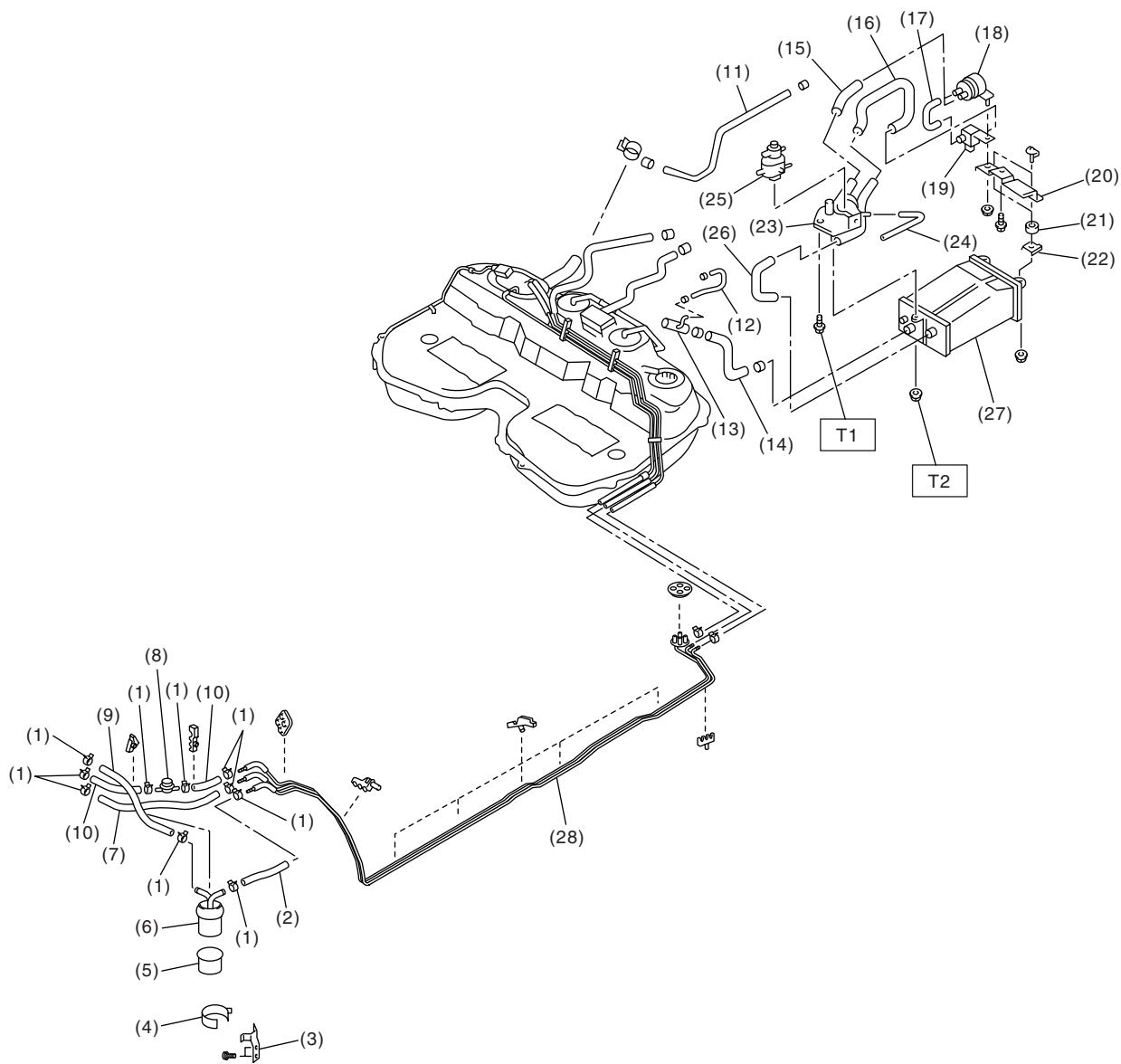
FUEL INJECTION (FUEL SYSTEMS)

(1) Heat shield cover	(16) Evaporation hose B	(31) Protector cover
(2) Fuel tank band	(17) Evaporation hose D	(32) Vent valve hose
(3) Protector LH	(18) Evaporation hose E	(33) Vent valve
(4) Protector RH	(19) Evaporation pipe assembly	(34) Fuel tank pressure sensor
(5) Fuel tank	(20) Retainer	(35) Fuel tank pressure sensor hose
(6) Canister hose A	(21) Quick connector	(36) Vent valve gasket
(7) Clamp	(22) Jet pump hose A	(37) Fuel tank sensor control valve
(8) Fuel pump gasket	(23) Fuel return hose A	
(9) Fuel pump assembly	(24) Fuel pipe assembly	<i>Tightening torque: N·m (kgf-m, ft-lb)</i>
(10) Fuel cut valve gasket	(25) Jet pump hose B	<i>T1: 4.4 (0.45, 3.3)</i>
(11) Fuel cut valve	(26) Fuel return hose B	<i>T2: 7.4 (0.75, 5.4)</i>
(12) Evaporation hose A	(27) Evaporation hose F	<i>T3: 33 (3.4, 25)</i>
(13) Clip	(28) Fuel sub level sensor gasket	
(14) Joint pipe	(29) Jet pump filter	
(15) Evaporation hose C	(30) Fuel sub level sensor	

GENERAL DESCRIPTION

FUEL INJECTION (FUEL SYSTEMS)

5. FUEL LINE



FU-00250

GENERAL DESCRIPTION

FUEL INJECTION (FUEL SYSTEMS)

(1) Clip	(12) Evaporation hose B	(23) Canister holder
(2) Fuel delivery hose A	(13) Joint pipe	(24) Evaporation hose C
(3) Fuel filter bracket	(14) Canister hose A	(25) Pressure control solenoid valve
(4) Fuel filter holder	(15) Drain filter hose A	(26) Canister hose B
(5) Fuel filter cup	(16) Drain valve hose	(27) Canister
(6) Fuel filter	(17) Drain filter hose B	(28) Fuel pipe assembly
(7) Evaporation hose	(18) Drain filter	
(8) Fuel damper	(19) Drain valve	
(9) Fuel delivery hose B	(20) Canister upper bracket	
(10) Fuel return hose	(21) Cushion rubber	
(11) Evaporation hose A	(22) Canister lower bracket	

Tightening torque: N·m (kgf-m, ft-lb)

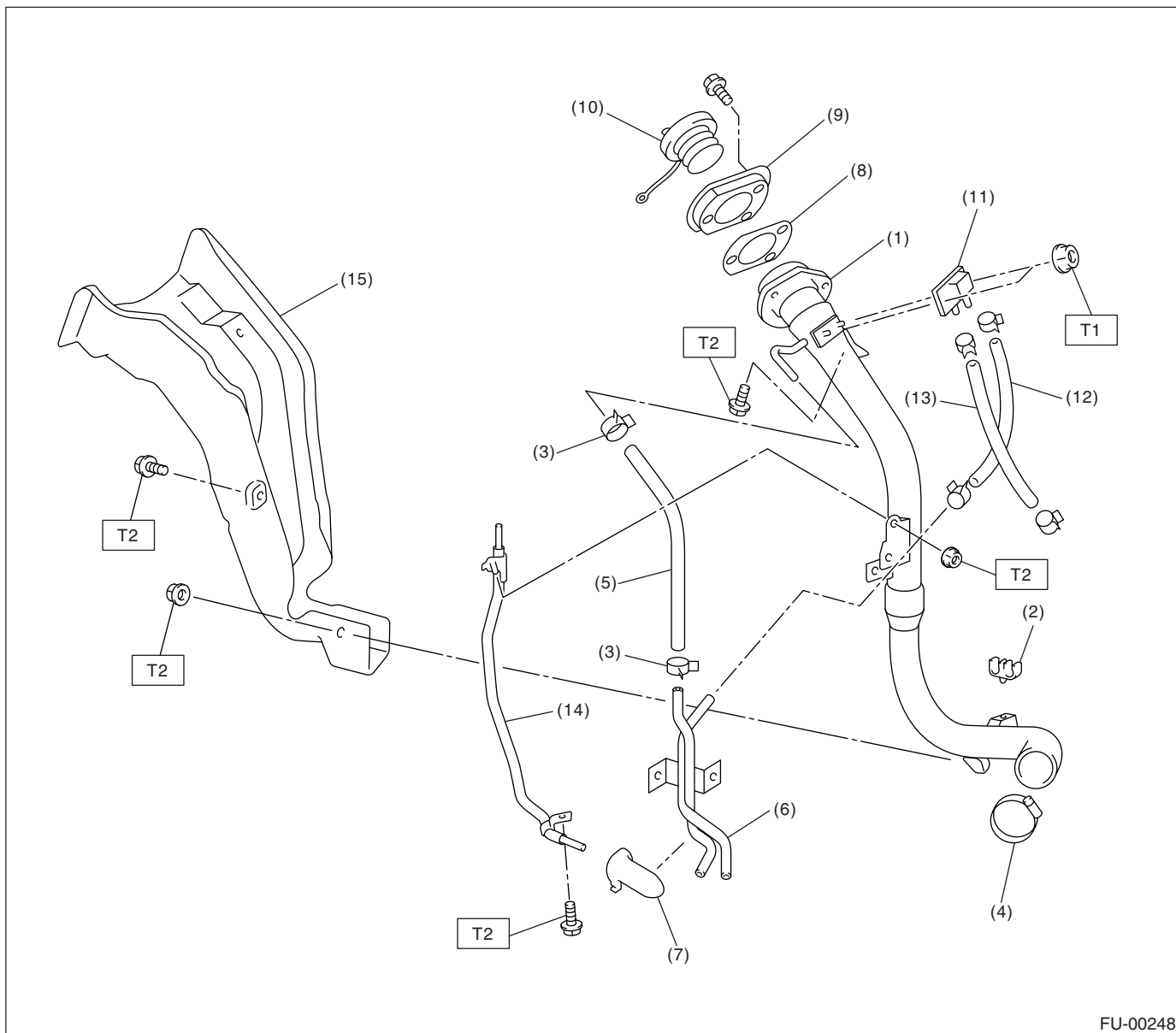
T1: 25 (2.5, 18.1)

T2: 23 (2.3, 16.6)

GENERAL DESCRIPTION

FUEL INJECTION (FUEL SYSTEMS)

6. FUEL FILLER PIPE



FU-00248

- (1) Fuel filter pipe assembly
- (2) Evaporation hose holder
- (3) Clamp
- (4) Clamp
- (5) Evaporation hose A
- (6) Evaporation pipe
- (7) Evaporation pipe holder

- (8) Filler pipe packing
- (9) Filler ring
- (10) Filler cap
- (11) Shut valve
- (12) Evaporation hose B
- (13) Evaporation hose C
- (14) Joint pipe

- (15) Fuel filler pipe protector

Tightening torque: N·m (kgf-m, ft-lb)

T1: 4.4 (0.45, 3.3)

T2: 7.5 (0.76, 5.53)

GENERAL DESCRIPTION

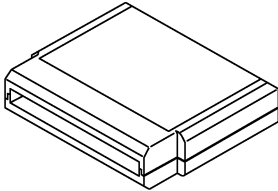

FUEL INJECTION (FUEL SYSTEMS)

C: CAUTION

- Wear working clothing, including a cap, protective goggles, and protective shoes during operation.
- Remove contamination including dirt and corrosion before removal, installation or disassembly.
- Keep the disassembled parts in order and protect them from dust or dirt.
- Before removal, installation or disassembly, be sure to clarify the failure. Avoid unnecessary removal, installation, disassembly, and replacement.

- Be careful not to burn your hands, because each part on the vehicle is hot after running.
- Be sure to tighten fasteners including bolts and nuts to the specified torque.
- Place shop jacks or safety stands at the specified points.
- Before disconnecting electrical connectors of sensors or units, be sure to disconnect the ground cable from battery.
- Place “NO FIRE” signs near the working area.
- Be careful not to spill fuel on the floor.

D: PREPARATION TOOL

ILLUSTRATION	TOOL NUMBER	DESCRIPTION	REMARKS
 ST24082AA210	24082AA210 (Newly adopted tool)	CARTRIDGE	Troubleshooting for electrical systems.
 ST22771AA030	22771AA030	SUBARU SELECT MONITOR KIT	Troubleshooting for electrical systems. <ul style="list-style-type: none">• English: 22771AA030 (Without printer)• German: 22771AA070 (Without printer)• French: 22771AA080 (Without printer)• Spanish: 22771AA090 (Without printer)