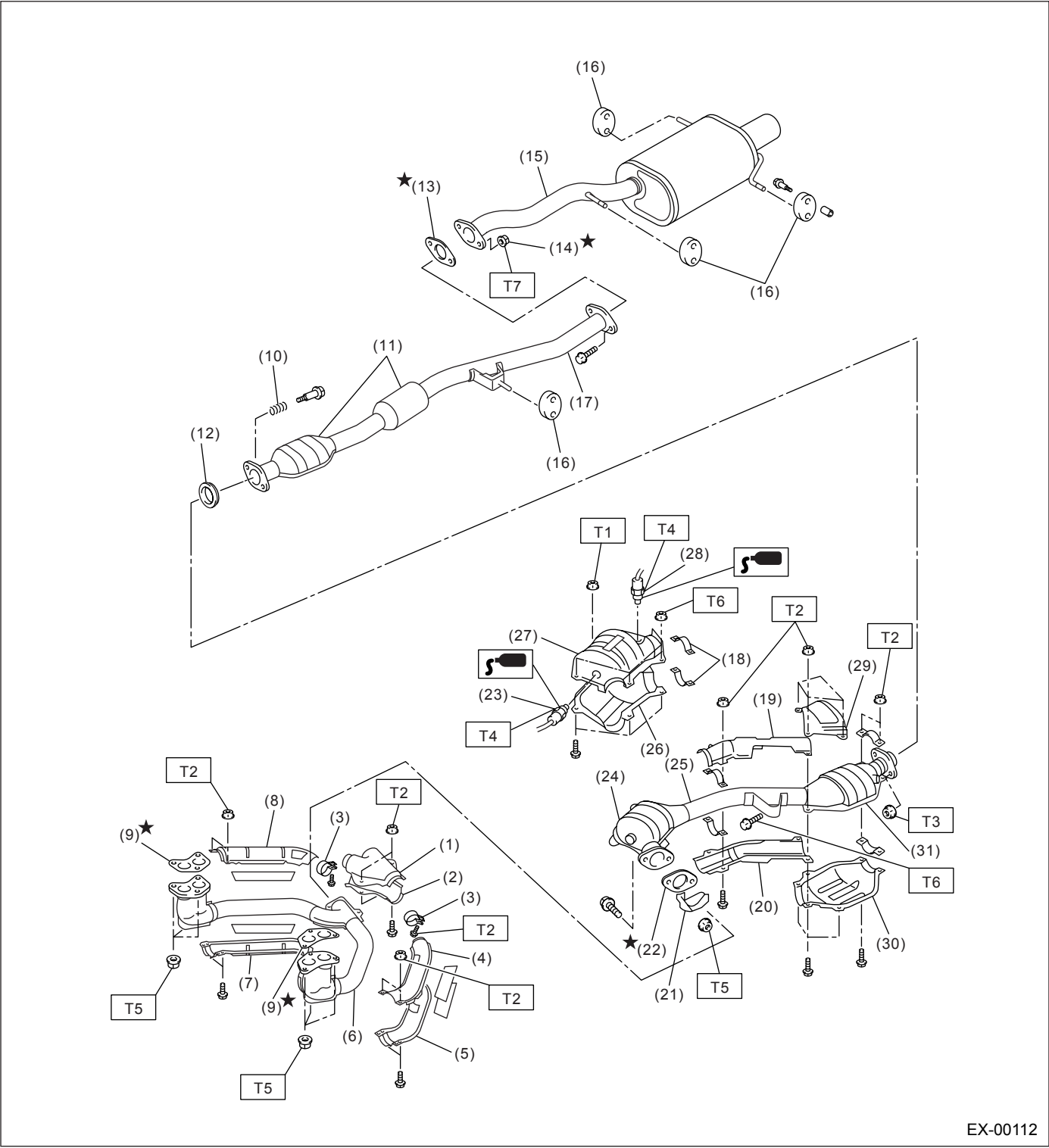


GENERAL DESCRIPTION

EXHAUST

1. General Description

A: COMPONENT



EX-00112

GENERAL DESCRIPTION

EXHAUST

(1) Upper front exhaust pipe cover CTR	(15) Muffler	(29) Upper rear catalytic converter cover
(2) Lower front exhaust pipe cover CTR	(16) Cushion rubber	(30) Lower rear catalytic converter cover
(3) Clamp	(17) Rear exhaust pipe	(31) Rear catalytic converter
(4) Upper front exhaust pipe cover LH	(18) Clamp	
(5) Lower front exhaust pipe cover LH	(19) Upper center exhaust pipe cover	
(6) Front exhaust pipe	(20) Lower center exhaust pipe cover	
(7) Lower front exhaust pipe cover RH	(21) Protector	<i>Tightening torque: N·m (kgf-m, ft-lb)</i>
(8) Upper front exhaust pipe cover RH	(22) Gasket	<i>T1: 8 (0.8, 5.8)</i>
(9) Gasket	(23) Front oxygen (A/F) sensor	<i>T2: 13 (1.3, 9.4)</i>
(10) Spring	(24) Front catalytic converter	<i>T3: 18 (1.8, 13.0)</i>
(11) Chamber	(25) Center exhaust pipe	<i>T4: 21 (2.1, 15.2)</i>
(12) Gasket	(26) Lower front catalytic converter cover	<i>T5: 30 (3.1, 22.4)</i>
(13) Gasket	(27) Upper front catalytic converter cover	<i>T6: 35 (3.6, 26.0)</i>
(14) Self-locking nut	(28) Rear oxygen sensor	<i>T7: 48 (4.9, 35.4)</i>

B: CAUTION

- Wear working clothing, including a cap, protective goggles, and protective shoes during operation.
- Remove contamination including dirt and corrosion before removal, installation or disassembly.
- Keep the disassembled parts in order and protect them from dust or dirt.
- Before removal, installation or disassembly, be sure to clarify the failure. Avoid unnecessary removal, installation, disassembly, and replacement.
- Be careful not to burn your hands, because each part on the vehicle is hot after running.
- Be sure to tighten fasteners including bolts and nuts to the specified torque.
- Place shop jacks or safety stands at the specified points.
- Before disconnecting electrical connectors of sensors or units, be sure to disconnect the ground cable from battery.