

GENERAL DESCRIPTION

REAR SUSPENSION

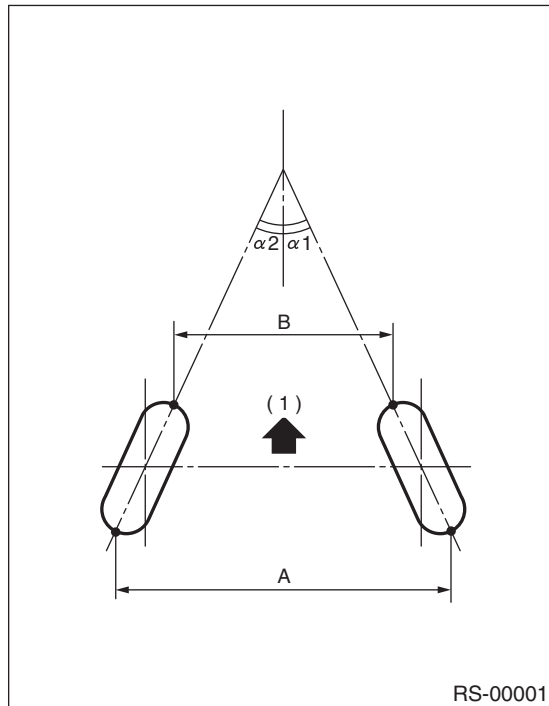
1. General Description

A: SPECIFICATIONS

Item	Sedan		Wagon		OUTBACK
	Turbo	Non-turbo	Turbo	Non-turbo	
Camber (tolerance: $\pm 0^{\circ}45'$)	$-1^{\circ}30'$	$-1^{\circ}25'$	$-1^{\circ}20'$	$-1^{\circ}15'$	$-1^{\circ}10'$
Toe-in	$0 \pm 3 \text{ mm } (0 \pm 0.12 \text{ in})$ Each toe-in angle: $\pm 0^{\circ}07'30''$ (Total toe-in angle $0^{\circ} \pm 15'$)				
Wheel arch height [tolerance: $+12 \text{ mm } (+0.47 \text{ in})$ $-24 \text{ mm } (-0.94 \text{ in})$]	376 mm (14.80 in)	381 mm (15.0 in)	376 mm (14.80 in)	381 mm (15.0 in)	386 mm (15.20 in)
Thrust angle	$0^{\circ} \pm 20'$				
Diameter of stabilizer	20 mm (0.79 in)	13 mm (0.51 in)	17 mm (0.67 in)	13mm (0.51 in)	

NOTE:

- Front and rear toe-ins and front camber can be adjusted. If the toe-in or camber tolerance exceeds specifications, adjust the toe-in and camber to the middle value of specification.
- The other items indicated in the specification table cannot be adjusted. If the other items exceeds specifications, check the suspension parts and connections for deformities; replace with new ones as required.



(1) Front

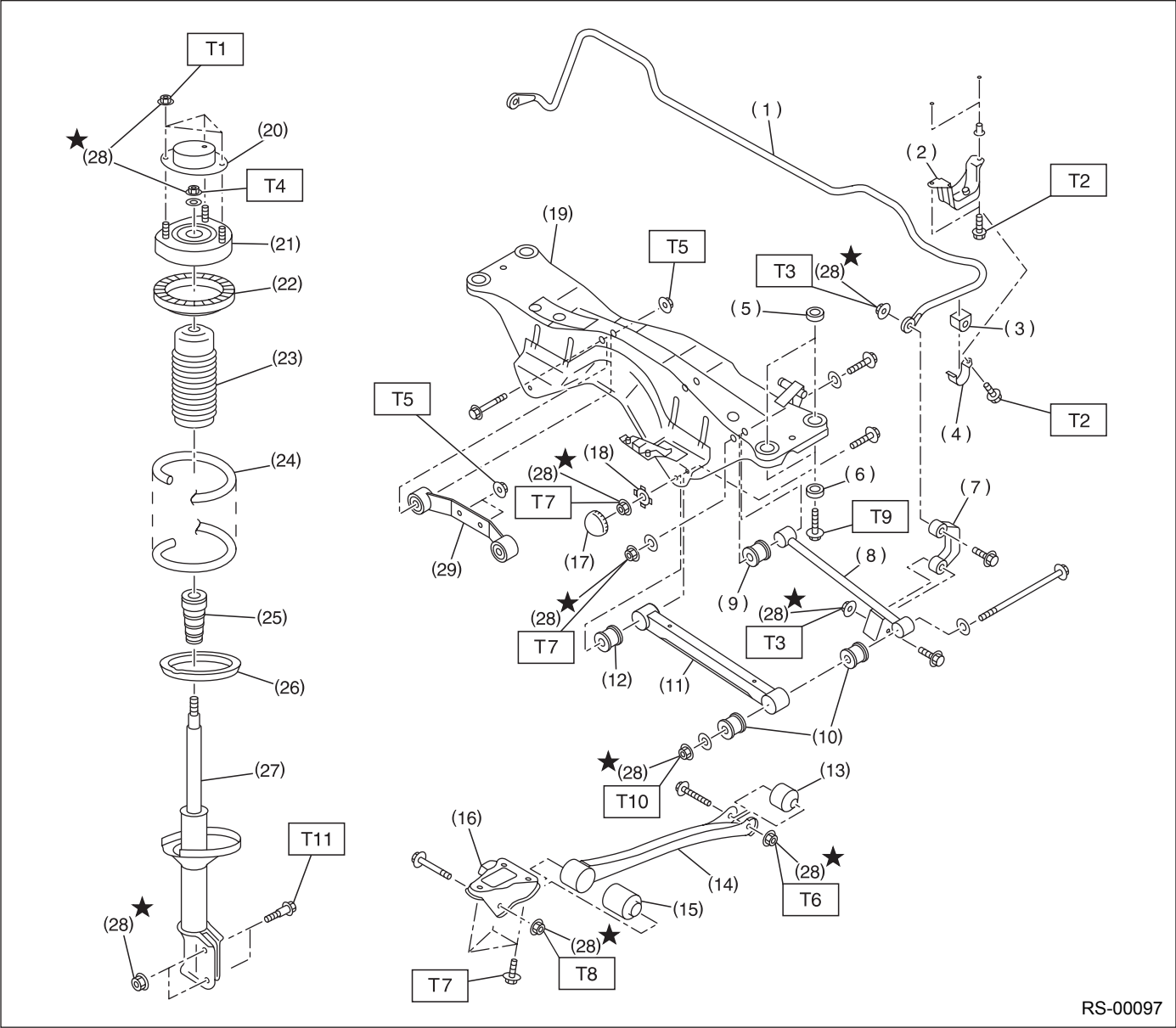
A – B = Positive: Toe-in, Negative: Toe-out

$\alpha 1, \alpha 2$: Each toe-in angle

GENERAL DESCRIPTION

REAR SUSPENSION

B: COMPONENT



GENERAL DESCRIPTION

REAR SUSPENSION

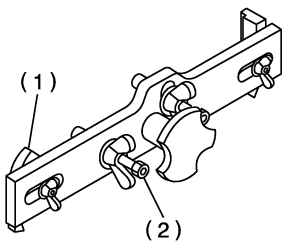
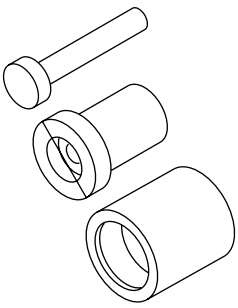
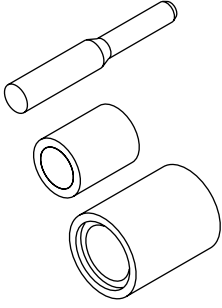
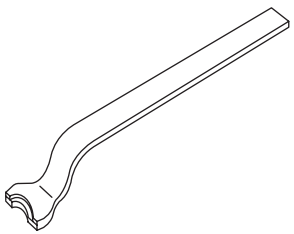
(1) Stabilizer	(16) Trailing link bracket	<i>Tightening torque: N·m (kgf-m, ft-lb)</i>
(2) Stabilizer bracket	(17) Cap (Protection)	<i>T1: 20 (2.0, 14.5)</i>
(3) Stabilizer bushing	(18) Washer	<i>T2: 25 (2.5, 18.1)</i>
(4) Clamp	(19) Rear crossmember	<i>T3: 45 (4.6, 33.2)</i>
(5) Floating bushing	(20) Strut mount cap	<i>T4: 55 (5.6, 41)</i>
(6) Stopper	(21) Strut mount	<i>T5: 70 (7.1, 52)</i>
(7) Stabilizer link	(22) Rubber seat upper	<i>T6: 90 (9.2, 66)</i>
(8) Rear lateral link	(23) Dust cover	<i>T7: 100 (10.2, 74)</i>
(9) Bushing (C)	(24) Coil spring	<i>T8: 115 (11.7, 85)</i>
(10) Bushing (A)	(25) Helper	<i>T9: 130 (13.3, 96)</i>
(11) Front lateral link	(26) Rubber seat lower	<i>T10: 135 (13.8, 100)</i>
(12) Bushing (B)	(27) Damper strut	<i>T11: 220 (22.4, 162)</i>
(13) Trailing link rear bushing	(28) Self-locking nut	
(14) Trailing link	(29) Rear differential member rear	
(15) Trailing link front bushing		

C: CAUTION

- Wear working clothing, including a cap, protective goggles, and protective shoes during operation.
- Remove contamination including dirt and corrosion before removal, installation or disassembly.
- Keep the disassembled parts in order and protect them from dust or dirt.
- Before removal, installation or disassembly, be sure to clarify the failure. Avoid unnecessary removal, installation, disassembly, and replacement.
- Use SUBARU genuine grease etc. or the equivalent. Do not mix grease etc. with that of another grade or from other manufacturers.
- Be sure to tighten fasteners including bolts and nuts to the specified torque.
- Place shop jacks or safety stands at the specified points.
- Apply grease onto sliding or revolution surfaces before installation.
- Before installing O-rings or snap rings, apply sufficient amount of grease to avoid damage and deformation.
- Before securing a part on a vise, place cushioning material such as wood blocks, aluminum plate, or shop cloth between the part and the vise.
- Before disposing shock absorbers, be sure to bleed gas completely. Also, do not throw away in fire.

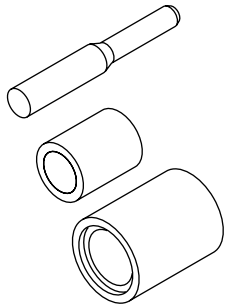
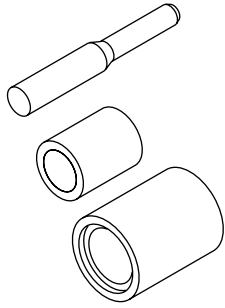
D: PREPARATION TOOL

1. SPECIAL TOOLS

ILLUSTRATION	TOOL NUMBER	DESCRIPTION	REMARKS
 <p>ST-927380001</p>	927380002	ADAPTER	Used as an adapter for camber & caster gauge when measuring camber and caster. (1) 28199AC000 PLATE (2) 28199AC010 BOLT
 <p>ST-927720000</p>	927720000	INSTALLER & REMOVER	Used for replacing front bushing.
 <p>ST-927730000</p>	927730000	INSTALLER & REMOVER	Used for replacing rear bushing.
 <p>ST28099PA100</p>	28099PA100	REMOVER	Used for removing DOJ.

GENERAL DESCRIPTION

REAR SUSPENSION

ILLUSTRATION	TOOL NUMBER	DESCRIPTION	REMARKS
 <p style="text-align: right;">ST-927700000</p>	92770000	INSTALLER & REMOVER	Used for replacing lateral link bushing.
 <p style="text-align: right;">ST-927690000</p>	927690000	HELPER SOCKET WRENCH	Used for replacing lateral link bushing.

2. GENERAL PURPOSE TOOLS

TOOL NAME	REMARKS
Alignment gauge	Used for wheel alignment measurement.
Turning radius gauge	Used for wheel alignment measurement.
Toe-in gauge	Used for toe-in measurement.
Transmission jack	Used for suspension assembly/disassembly.
Bearing puller	Used for removing bushings.