

## GENERAL DESCRIPTION

### PARKING BRAKE

---

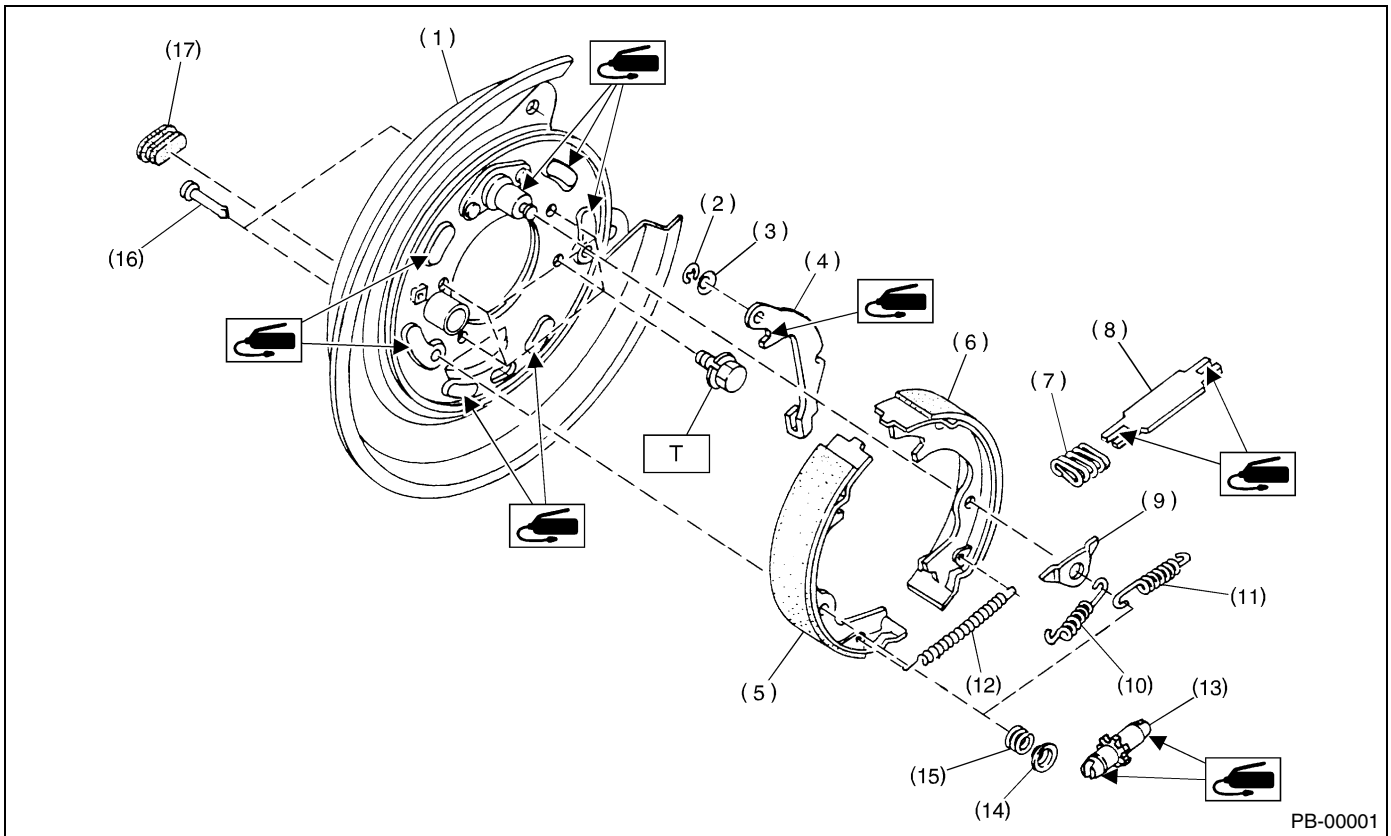
## 1. General Description

### A: SPECIFICATIONS

Model	Rear drum brake	Rear disc brake
Type	Mechanical on rear brakes, drum in disc	
Effective drum diameter mm (in)	228.6 (9)	170 (6.69)
Lining dimensions (length × width × thickness) mm (in)	219.4 × 35.0 × 4.1 (8.64 × 1.378 × 0.161)	163.1 × 30.0 × 3.2 (6.42 × 1.181 × 0.126)
Clearance adjustment	Automatic adjustment	Manual adjustment
Lever stroke notches/N (kgf, lb)	7 to 8/196 (20, 44)	

### B: COMPONENT

#### 1. PARKING BRAKE (REAR DISC BRAKE)



- |                                    |                              |
|------------------------------------|------------------------------|
| (1) Back plate                     | (10) Primary return spring   |
| (2) Retainer                       | (11) Secondary return spring |
| (3) Spring washer                  | (12) Adjusting spring        |
| (4) Lever                          | (13) Adjuster                |
| (5) Parking brake shoe (Primary)   | (14) Shoe hold-down cup      |
| (6) Parking brake shoe (Secondary) | (15) Shoe hold down spring   |
| (7) Strut spring                   | (16) Shoe hold down pin      |
| (8) Strut                          | (17) Adjusting hole cover    |
| (9) Shoe guide plate               |                              |

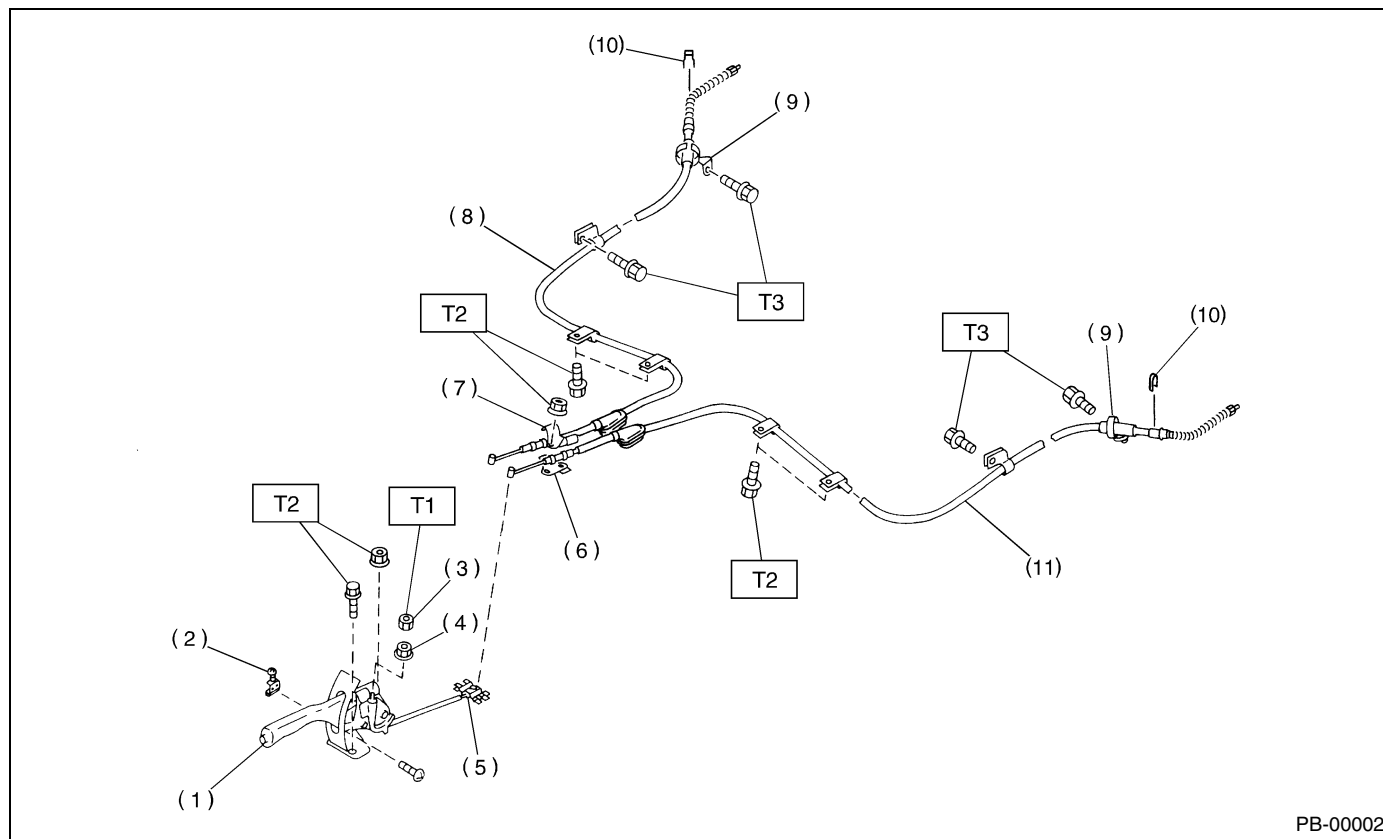
**Tightening torque: N-m (kgf-m, ft-lb)**

**T: 53 (5.4, 39)**

# GENERAL DESCRIPTION

## PARKING BRAKE

### 2. PARKING BRAKE CABLE



PB-00002

- |                          |   |
|--------------------------|---|
| (1) Parking brake lever  | (7) Clamp                               |
| (2) Parking brake switch | (8) Parking brake cable RH              |
| (3) Lock nut             | (9) Cable guide                         |
| (4) Adjusting nut        | (10) Clamp (Rear disc brake model only) |
| (5) Equalizer            | (11) Parking brake cable LH             |
| (6) Bracket              |   |

**Tightening torque: N·m (kgf-m, ft-lb)**

**T1: 6 (0.6, 4.4)**

**T2: 18 (1.8, 13.0)**

**T3: 33 (3.4, 24)**

### **C: CAUTION**

- Wear working clothing, including a cap, protective goggles, and protective shoes during operation.
- Remove contamination including dirt and corrosion before removal, installation or disassembly.
- Keep the disassembled parts in order and protect them from dust or dirt.
- Before removal, installation or disassembly, be sure to clarify the failure. Avoid unnecessary removal, installation, disassembly, and replacement.
- Be careful not to burn your hands, because each part on the vehicle is hot after running.
- Use SUBARU genuine grease etc. or the equivalent. Do not mix grease etc. with that of another grade or from other manufacturers.
- Be sure to tighten fasteners including bolts and nuts to the specified torque.
- Place shop jacks or safety stands at the specified points.
- Apply grease onto sliding or revolution surfaces before installation.
- Before installing O-rings or snap rings, apply sufficient amount of grease to avoid damage and deformation.
- Before securing a part on a vise, place cushioning material such as wood blocks, aluminum plate, or shop cloth between the part and the vise.
- Keep grease etc. away from parking brake shoes.