

GENERAL DESCRIPTION

FRONT SUSPENSION

1. General Description

A: SPECIFICATIONS

1. STABILIZER

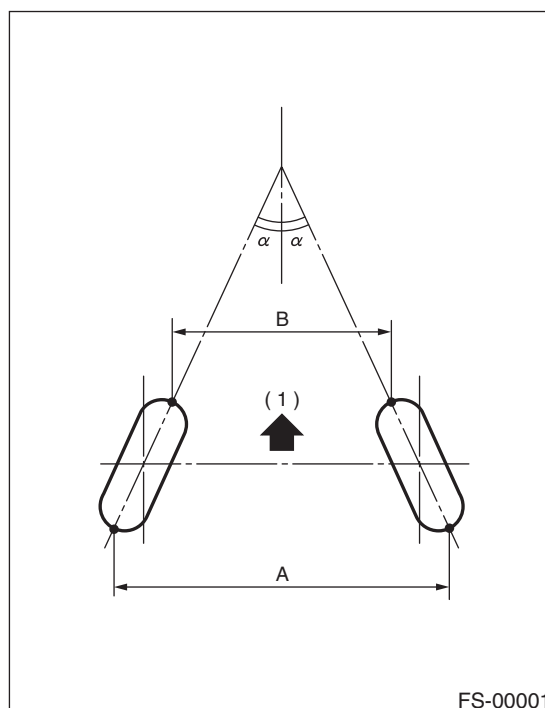
Model	Bar diameter.
ALL MODEL	20 mm (0.79 in)

2. WHEEL ALIGNMENT

Model	Sedan		Wagon		OUTBACK
	Turbo	Non-turbo	Turbo	Non-turbo	
Camber (tolerance: $\pm 0^{\circ}45'$)	$-0^{\circ}25'$	$-0^{\circ}15'$	$-0^{\circ}20'$	$-0^{\circ}10'$	$-0^{\circ}05'$
Caster (common difference: $\pm 0^{\circ}45'$)	$3^{\circ}35'$	$3^{\circ}25'$	$3^{\circ}35'$	$3^{\circ}25'$	$3^{\circ}25'$
Toe-in	0 ± 3 mm (0 ± 0.12 in) Each toe angle: $\pm 0^{\circ}07'30''$ (Total toe angle: $\pm 0^{\circ}15'$)				
Kingpin angle (tolerance: $\pm 0^{\circ}45'$)	$14^{\circ}35'$	$14^{\circ}20'$	$13^{\circ}45'$	$13^{\circ}30'$	$13^{\circ}20'$
Wheel arch height [tolerance: +12 mm (+0.47 in) -24 mm (-0.94 in)]	396 mm (15.59 in)	406 mm (15.98 in)	387 mm (15.24 in)	397 mm (15.63 in)	402 mm (15.83 in)

NOTE:

- Front and rear toe-ins and front camber can be adjusted. If the toe-in or camber tolerance exceeds specifications, adjust toe-in and camber to the middle value of specification.
- The other items indicated in the specification table cannot be adjusted. If the other items exceeds specifications, check suspension parts and connections for deformities; replace with new ones as required.



FS-00001

(1) Front

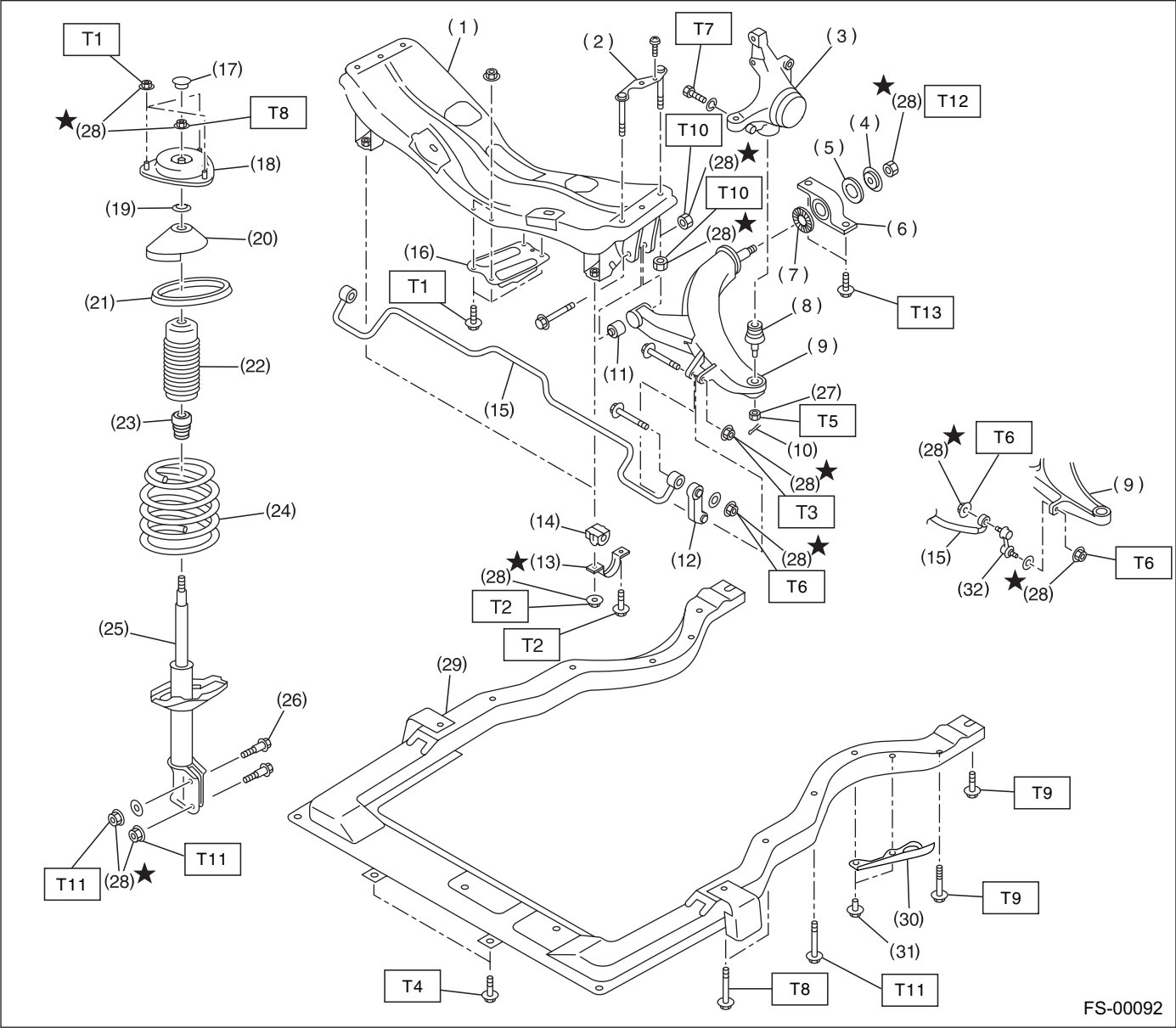
$A - B$ = Positive: Toe-in, Negative: Toe-out

α = Each toe angle

GENERAL DESCRIPTION

FRONT SUSPENSION

B: COMPONENT



FS-00092

GENERAL DESCRIPTION

FRONT SUSPENSION

(1) Front crossmember	(17) Dust seal	<i>Tightening torque: N·m (kgf-m, ft-lb)</i>
(2) Bolt ASSY	(18) Strut mount	<i>T1: 20 (2.0, 14.5)</i>
(3) Housing	(19) Spacer	<i>T2: 25 (2.5, 18.1)</i>
(4) Washer	(20) Upper spring seat	<i>T3: 30 (3.1, 22)</i>
(5) Stopper rubber (Rear)	(21) Rubber seat	<i>T4: 34 (3.5, 25)</i>
(6) Rear bushing	(22) Dust cover	<i>T5: 40 (4.1, 30)</i>
(7) Stopper rubber (Front)	(23) Helper	<i>T6: 45 (4.6, 33)</i>
(8) Ball joint	(24) Coil spring	<i>T7: 50 (5.1, 37)</i>
(9) Transverse link	(25) Damper strut	<i>T8: 55 (5.6, 41)</i>
(10) Cotter pin	(26) Adjusting bolt	<i>T9: 71 (7.2, 52)</i>
(11) Front bushing	(27) Castle nut	<i>T10: 100 (10.2, 74)</i>
(12) Stabilizer link (Except sedan turbo model)	(28) Self-locking nut	<i>T11: <Ref. to FS-17, INSPECTION, Sub Frame.></i>
(13) Clamp	(29) Sub frame	<i>T12: 175 (17.8, 129)</i>
(14) Bushing	(30) Cover	<i>T13: 190 (19.4, 140)</i>
(15) Stabilizer	(31) Clip	<i>T14: 250 (25.5, 184)</i>
(16) Jack-up plate	(32) Stabilizer link (Sedan turbo model)	

C: CAUTION

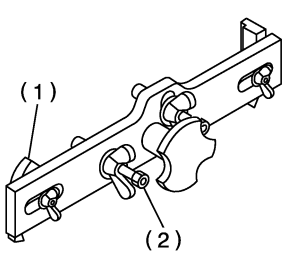
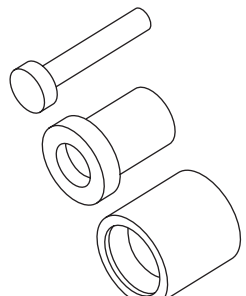
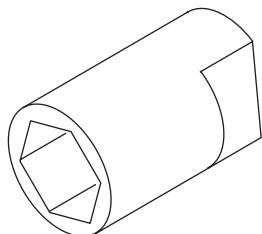
- Wear working clothing, including a cap, protective goggles, and protective shoes during operation.
- Remove contamination including dirt and corrosion before removal, installation or disassembly.
- Keep the disassembled parts in order and protect them from dust or dirt.
- Before removal, installation or disassembly, be sure to clarify the failure. Avoid unnecessary removal, installation, disassembly, and replacement.
- Use SUBARU genuine grease etc. or the equivalent. Do not mix grease etc. with that of another grade or from other manufacturers.
- Be sure to tighten fasteners including bolts and nuts to the specified torque.
- Place shop jacks or safety stands at the specified points.
- Apply grease onto sliding or revolution surfaces before installation.
- Before installing O-rings or snap rings, apply sufficient amount of grease to avoid damage and deformation.
- Before securing a part on a vise, place cushioning material such as wood blocks, aluminum plate, or shop cloth between the part and the vise.

GENERAL DESCRIPTION

FRONT SUSPENSION

D: PREPARATION TOOL

1. SPECIAL TOOLS

ILLUSTRATION	TOOL NUMBER	DESCRIPTION	REMARKS
 <p>ST-927380001</p>	927380002	ADAPTER	Used as an adapter for camber & caster gauge when measuring camber and caster. (1) 28199AC000 PLATE (2) 28199AC010 BOLT
 <p>ST-927680000</p>	927680000	INSTALLER & REMOVER SET	Used for replacing transverse link bushing.
 <p>ST-927760000</p>	927760000	STRUT MOUNT SOCKET	Used for disassembling and assembling strut and shock mount.

2. GENERAL PURPOSE TOOLS

TOOL NAME	REMARKS
Alignment gauge	Used for wheel alignment measurement.
Turning radius gauge	Used for wheel alignment measurement.
Toe-in gauge	Used for toe-in measurement.
Dial gauge	Used for damper strut measurement.