

GENERAL DESCRIPTION

ABS

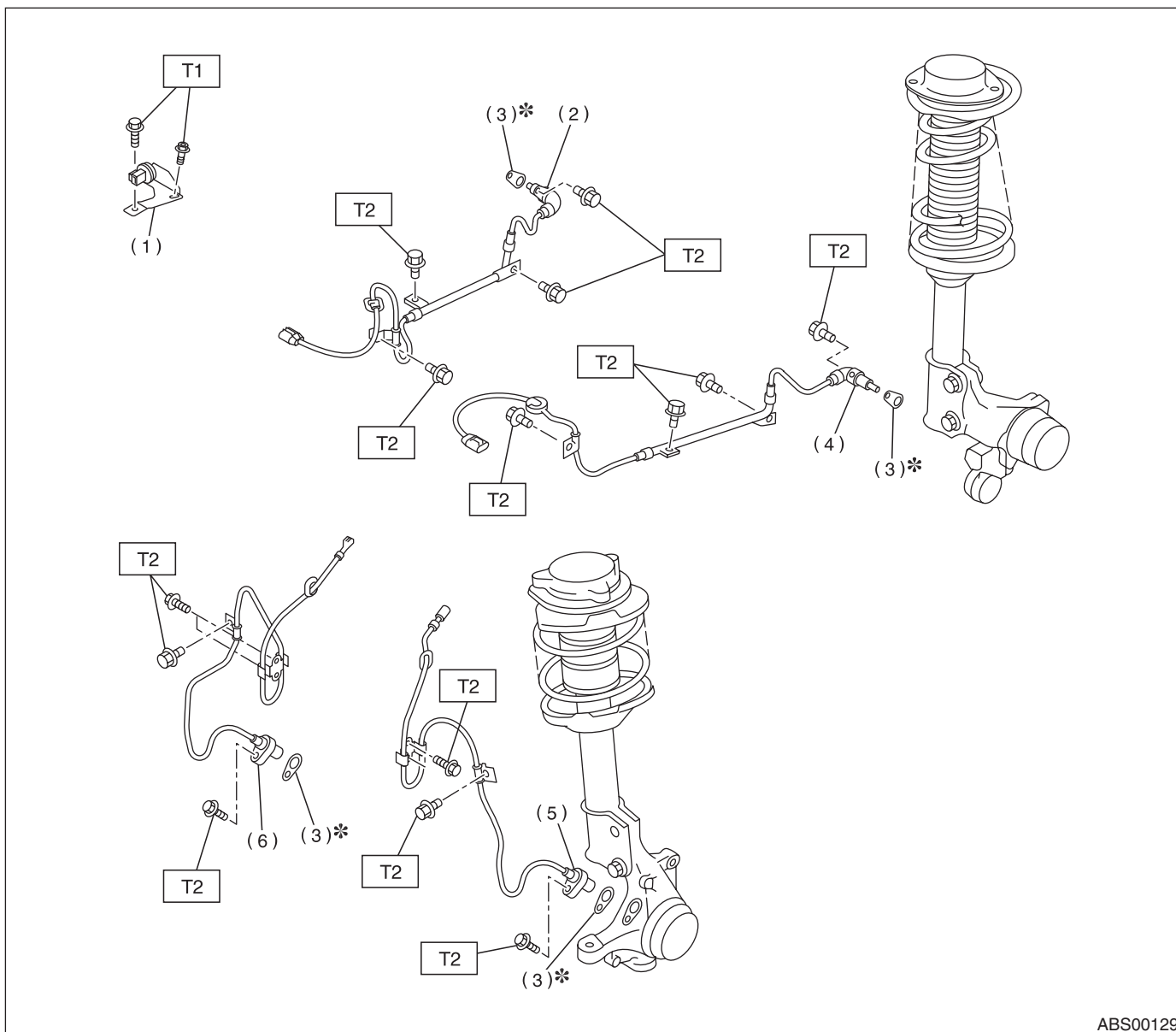
1. General Description

A: SPECIFICATIONS

Item				Standard or remarks	
ABS sensor	ABS sensor gap		Front	0.3 — 0.8 mm (0.012 — 0.031 in)	
			Rear	0.7 — 1.2 mm (0.028 — 0.047 in)	
	ABS sensor resistance		Front	1.25±0.25 kΩ	
			Rear	1.15±0.115 kΩ	
	Marks of the harness	Front	RH	White	
			LH	Yellow	
		Rear	RH	Light blue	
			LH	Brown	
G sensor	G sensor voltage			2.3±0.2 V	
ABS control module and hydraulic control unit (ABSCM&H/U) marks			AT		CC
			MT		CD

B: COMPONENT

1. SENSOR



ABS00129

- | | |
|------------------------|-------------------------|
| (1) G sensor | (4) Rear ABS sensor LH |
| (2) Rear ABS sensor RH | (5) Front ABS sensor LH |
| (3) ABS spacer | (6) Front ABS sensor RH |

Tightening torque: N·m (kgf-m, ft-lb)

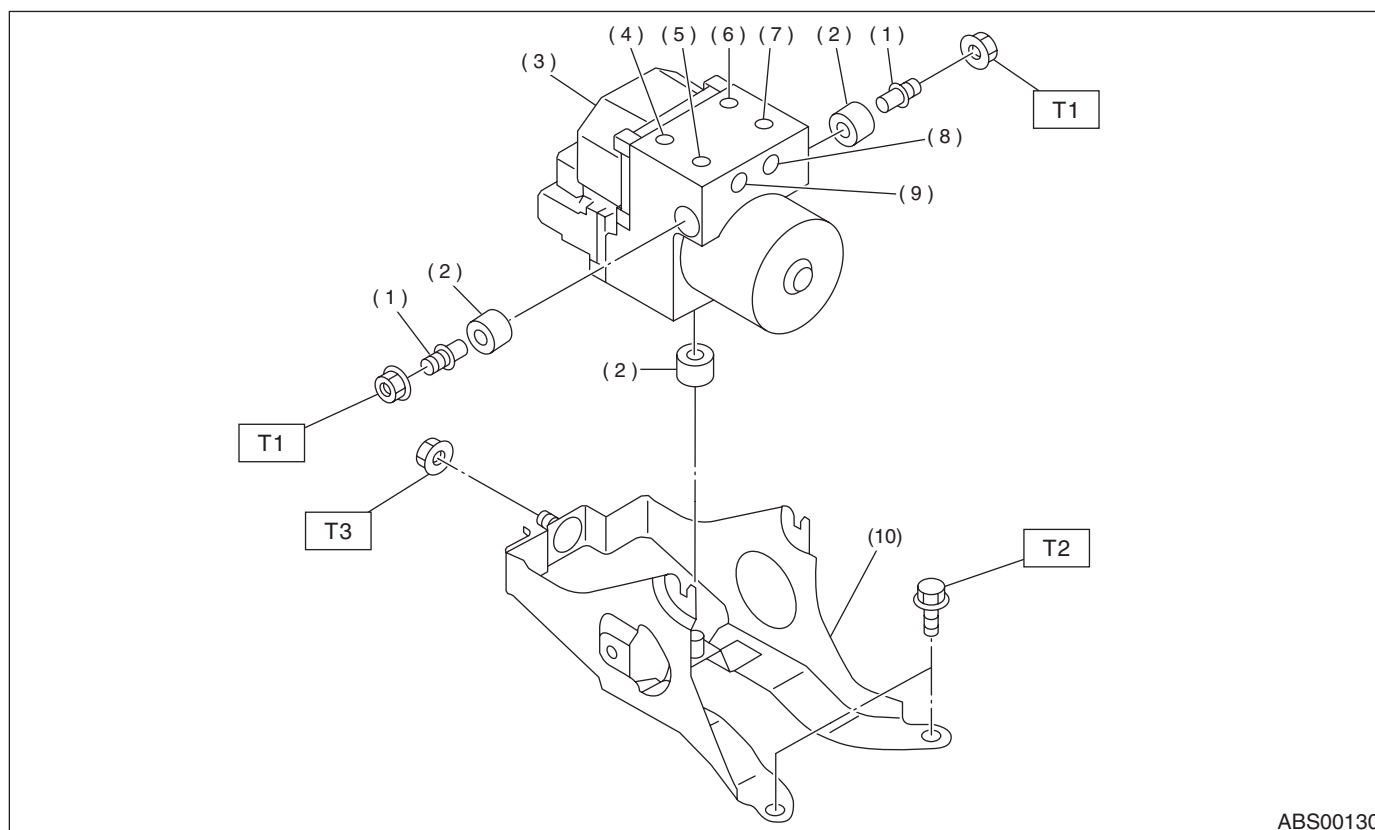
T1: 18 (1.8, 13)

T2: 33 (3.3, 24)

GENERAL DESCRIPTION

ABS

2. ABS CONTROL MODULE AND HYDRAULIC CONTROL UNIT (ABSCM&H/U)



ABS00130

- (1) Stud bolt
- (2) Damper
- (3) ABS control module and hydraulic control unit
- (4) Front-LH outlet
- (5) Secondary inlet

- (6) Front-RH outlet
- (7) Primary inlet
- (8) Rear-LH outlet
- (9) Rear-RH outlet
- (10) Bracket

Tightening torque: N·m (kgf-m, ft-lb)

T1: 18 (1.8, 13.0)

T2: 38 (3.8, 27.5)

T3: 33 (3.3, 24)

C: CAUTION

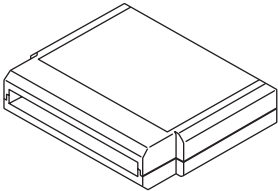

- Wear working clothing, including a cap, protective goggles, and protective shoes during operation.
- Remove contamination including dirt and corrosion before removal, installation or disassembly.
- Keep the disassembled parts in order and protect them from dust or dirt.
- Before removal, installation or disassembly, be sure to clarify the failure. Avoid unnecessary removal, installation, disassembly, and replacement.
- Be careful not to burn your hands, because each part in the vehicle is hot after running.
- Be sure to tighten fasteners including bolts and nuts to the specified torque.
- Place shop jacks or safety stands at the specified points.
- Before disconnecting electrical connectors of sensors or units, be sure to disconnect negative terminal from battery.

GENERAL DESCRIPTION

ABS

D: PREPARATION TOOL

1. SPECIAL TOOLS

ILLUSTRATION	TOOL NUMBER	DESCRIPTION	REMARKS
 <p style="text-align: center;">ST24082AA210</p>	24082AA210 (New apopted tool)	CARTRIDGE	Troubleshooting for electrical systems.
 <p style="text-align: center;">ST22771AA030</p>	22771AA030	SELECT MONITOR KIT	Troubleshooting for electrical systems. <ul style="list-style-type: none"> • English: 22771AA030 (Without printer) • German: 22771AA070 (Without printer) • French: 22771AA080 (Without printer) • Spanish: 22771AA090 (Without printer)

2. GENERAL PURPOSE TOOLS

TOOL NAME	REMARKS
Circuit tester	Used for measuring resistance, voltage and ampere.
Pressure gauge	Used for measuring oil pressure.
Oscilloscope	Used for measuring sensor.