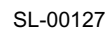


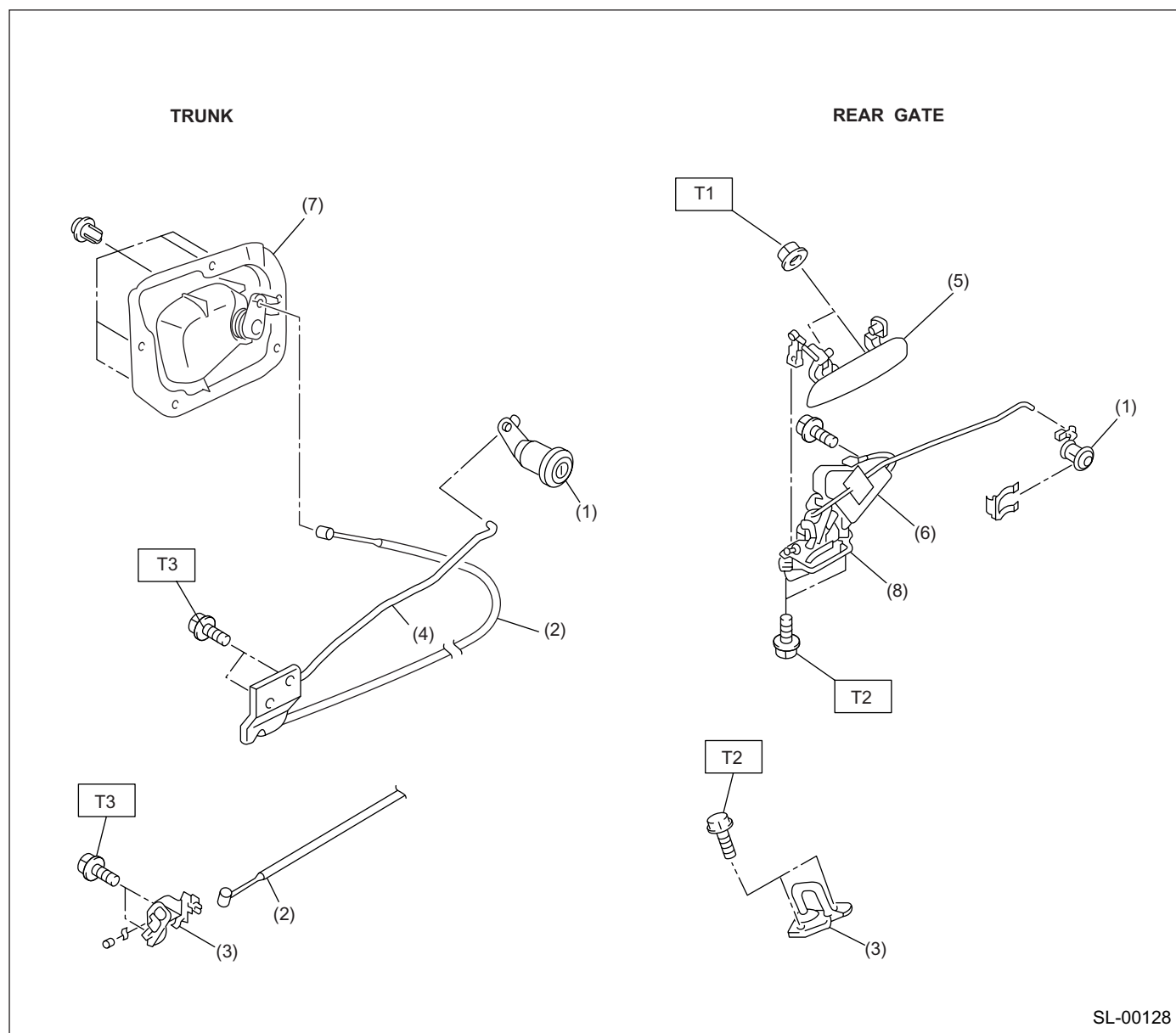
## 1. DOOR LOCK ASSEMBLY



- |                             |                       |
|-----------------------------|-----------------------|
| (1) Inner remote ASSY       | (6) Striker           |
| (2) Inner remote cover      | (7) Door outer handle |
| (3) Bell crank              | (8) Key cylinder      |
| (4) Auto-door lock actuator |                       |
| (5) Door latch              |                       |

**T3: 17.6 (1.8, 13)**

### 2. TRUNK LID AND REAR GATE LOCK



SL-00128

- |                         |                              |
|-------------------------|------------------------------|
| (1) Key cylinder        | (5) Rear gate outer handle   |
| (2) Cable               | (6) Rear gate actuator       |
| (3) Striker             | (7) Trunk lid release handle |
| (4) Trunk lid lock ASSY | (8) Rear gate latch          |

**Tightening torque: N·m (kgf-m, ft-lb)**

**T1: 4.5 (0.45, 3.3)**

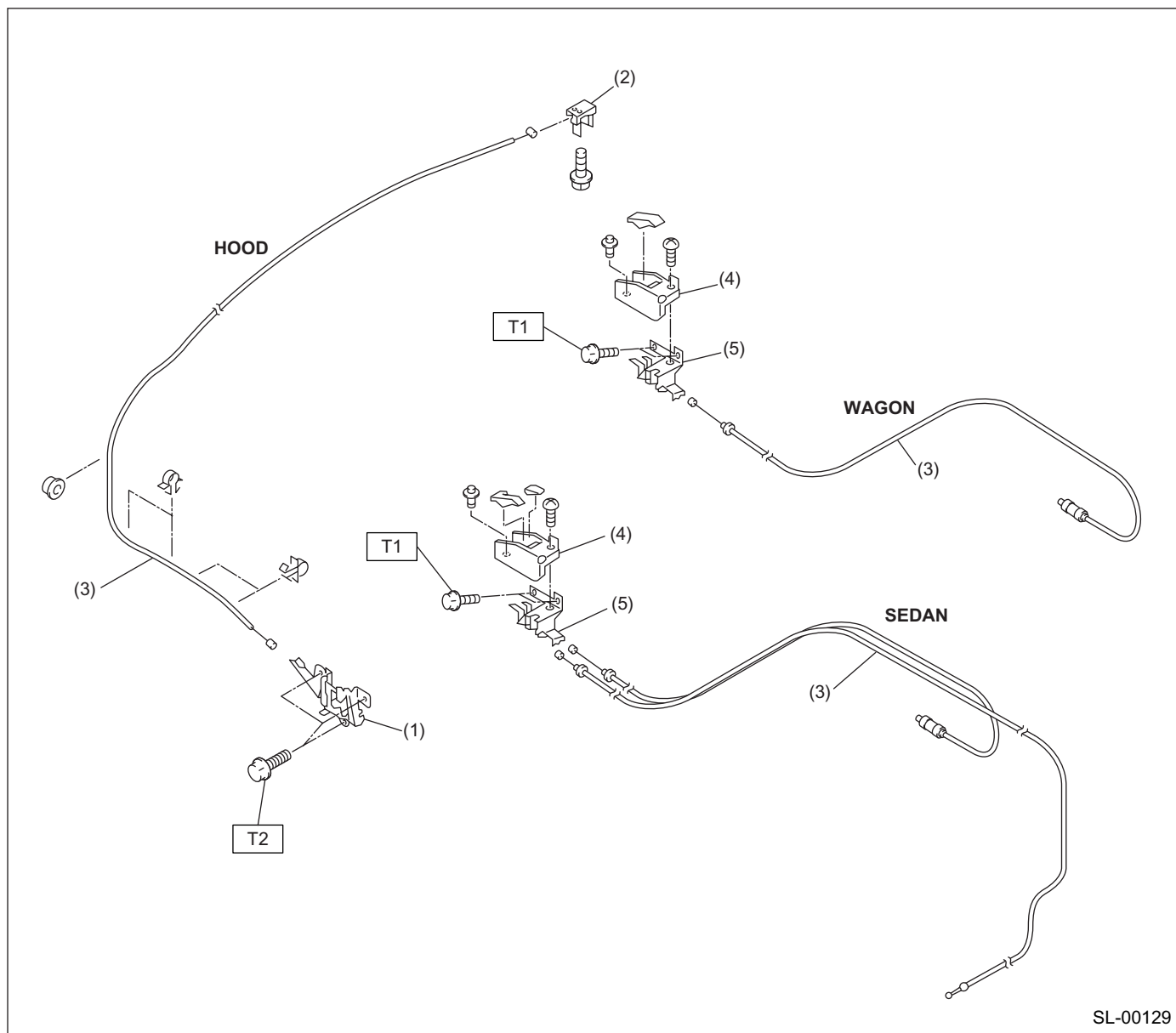
**T2: 18 (1.84, 13.3)**

**T3: 25 (2.5, 18.1)**

# GENERAL DESCRIPTION

## SECURITY AND LOCKS

### 3. HOOD LOCK AND REMOTE OPENERS



- (1) Hood lock ASSY
- (2) Lever ASSY
- (3) Cable
- (4) Cover

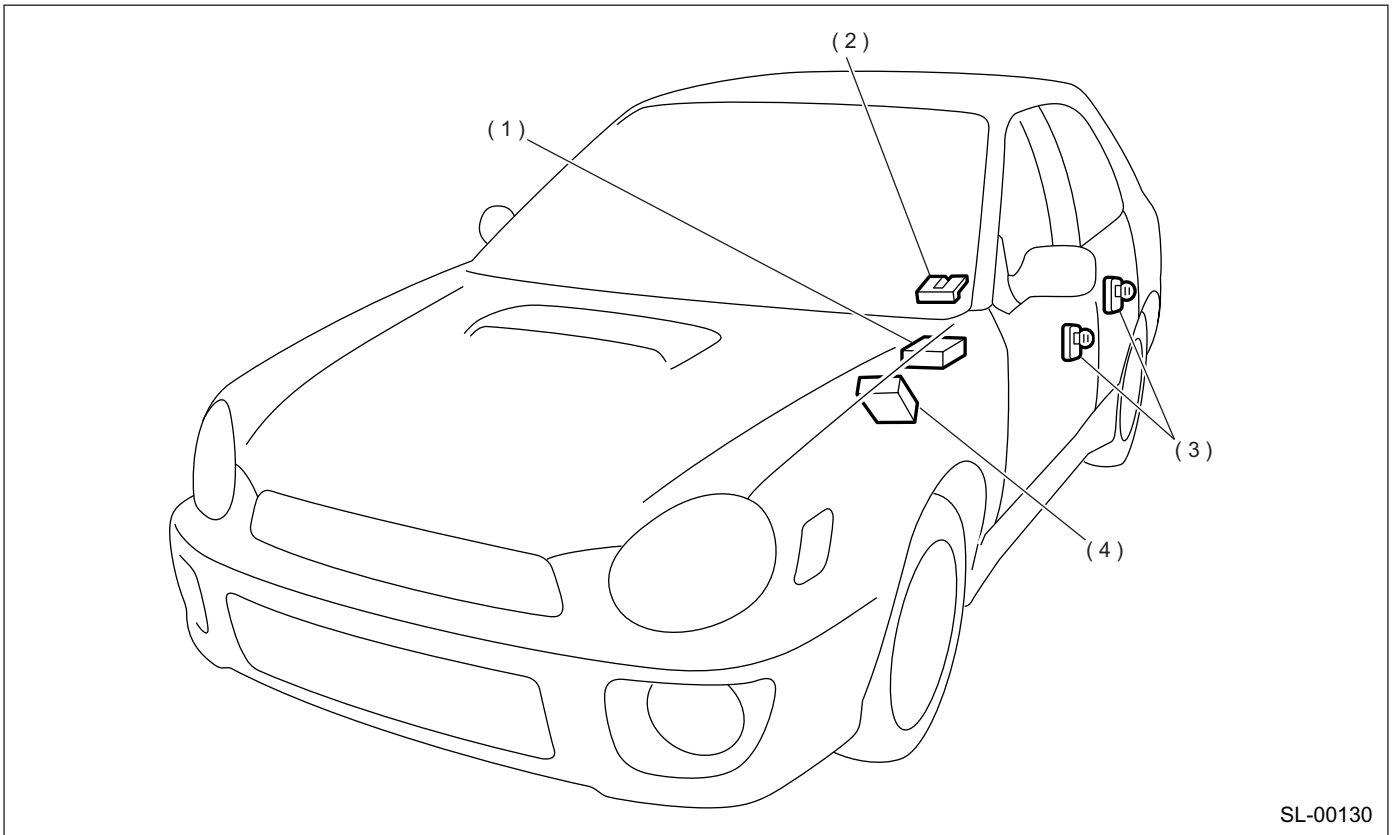
- (5) Pull handle ASSY

**Tightening torque: N·m (kgf-m, ft-lb)**

**T1: 6.4 (0.65, 4.7)**

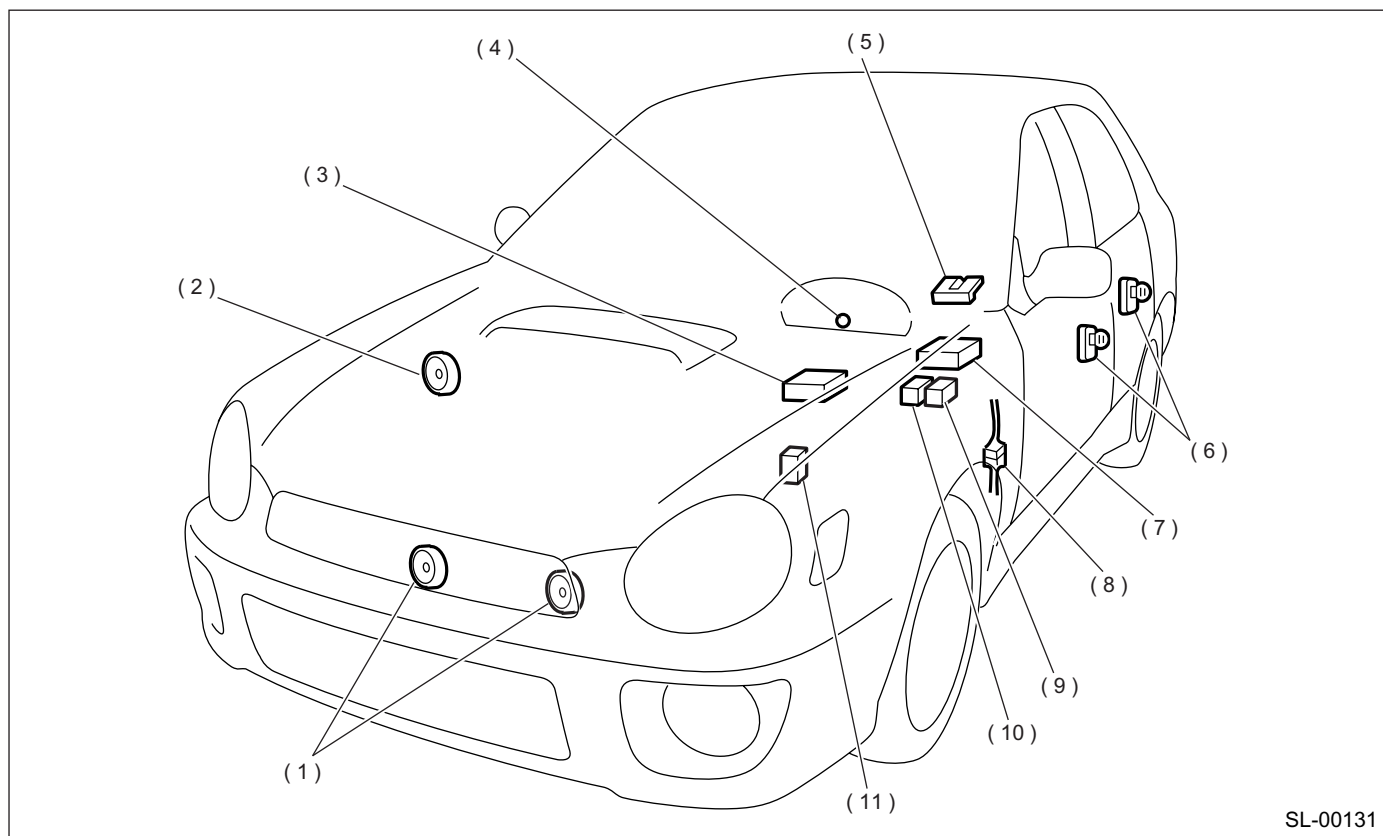
**T2: 32 (3.3, 23.9)**

### 4. KEYLESS ENTRY SYSTEM



- |                                    |                       |
|------------------------------------|-----------------------|
| (1) Keyless entry control module   | (3) Door switch       |
| (2) Rear gate latch switch (Wagon) | (4) Integrated module |

### 5. SECURITY SYSTEM



SL-00131

- |   |  |                                    |
|---|--|------------------------------------|
| (1) Horn  | (5) Trunk room light switch (Sedan),<br>rear gate latch switch (Wagon) | (8) Passive arm connector          |
| (2) Security horn                                   | (6) Door switch  | (9) Security horn relay            |
| (3) Security control module                         | (7) Keyless entry control module                                       | (10) Interrupt relay               |
| (4) Security indicator light (in combination meter) |  | (11) Horn relay (in main fuse box) |

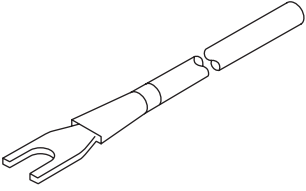
#### B: CAUTION

- Before disassembling or reassembling the parts, always disconnect the battery ground cable. When repairing the radio, control module, etc. which are provided with memory functions, record the memory contents before disconnecting battery ground cable. Otherwise, these contents are cancelled upon disconnection.
- Reassemble the parts in the reverse order of disassembly procedure unless otherwise indicated.
- Adjust the parts to the specifications contained in this manual if so designated.
- Connect the connectors and hoses securely during reassembly.
- After reassembly, ensure the functional parts operate smoothly.
- The airbag system wiring harness is routed near the electrical parts and switch.

- All airbag system wiring harness and connectors are colored yellow. Do not use the electrical test equipment on these circuits.
- Be careful not to damage the Airbag system wiring harness when servicing the ignition key cylinder.

## C: PREPARATION TOOL

### 1. SPECIAL TOOLS

ILLUSTRATION	TOOL NUMBER	DESCRIPTION	REMARKS
 <p>ST-925580000</p>	925580000	PULLER	Used for removing trim clip

### 2. GENERAL TOOLS

TOOL NAME	REMARKS
Circuit Tester	Used for measuring resistance and voltage.
Drill	Used for replacing ignition key lock.