

CONTROL UNIT

HVAC SYSTEM (HEATER, VENTILATOR AND A/C)

10. Control Unit

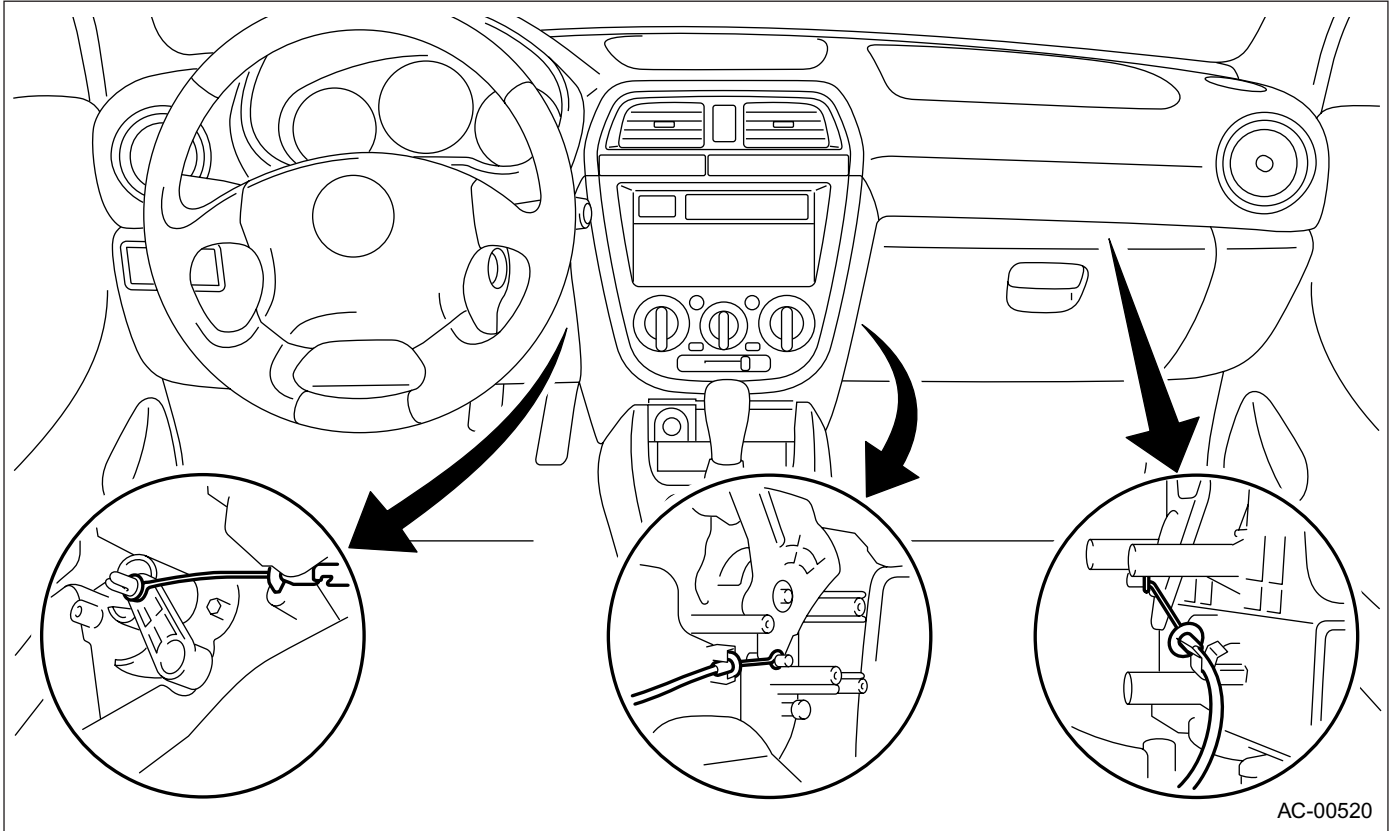
A: REMOVAL

1) Disconnect the ground terminal from battery.

2) Remove the glove box. <Ref. to EI-40, REMOVAL, Glove Box.>

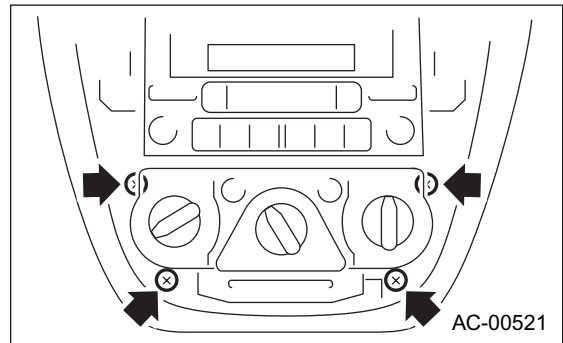
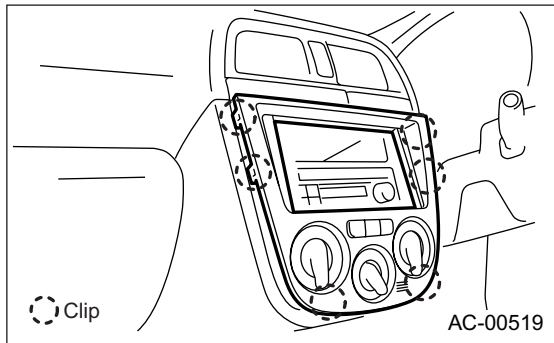
3) Remove the lower panel. <Ref. to EI-43, Instrument Panel Assembly.>

4) Remove the control wires.



5) Remove the center console panel.

6) Remove four screws.



7) Pull out the control unit and disconnect connectors.

B: INSTALLATION

Install in the reverse order of removal.