

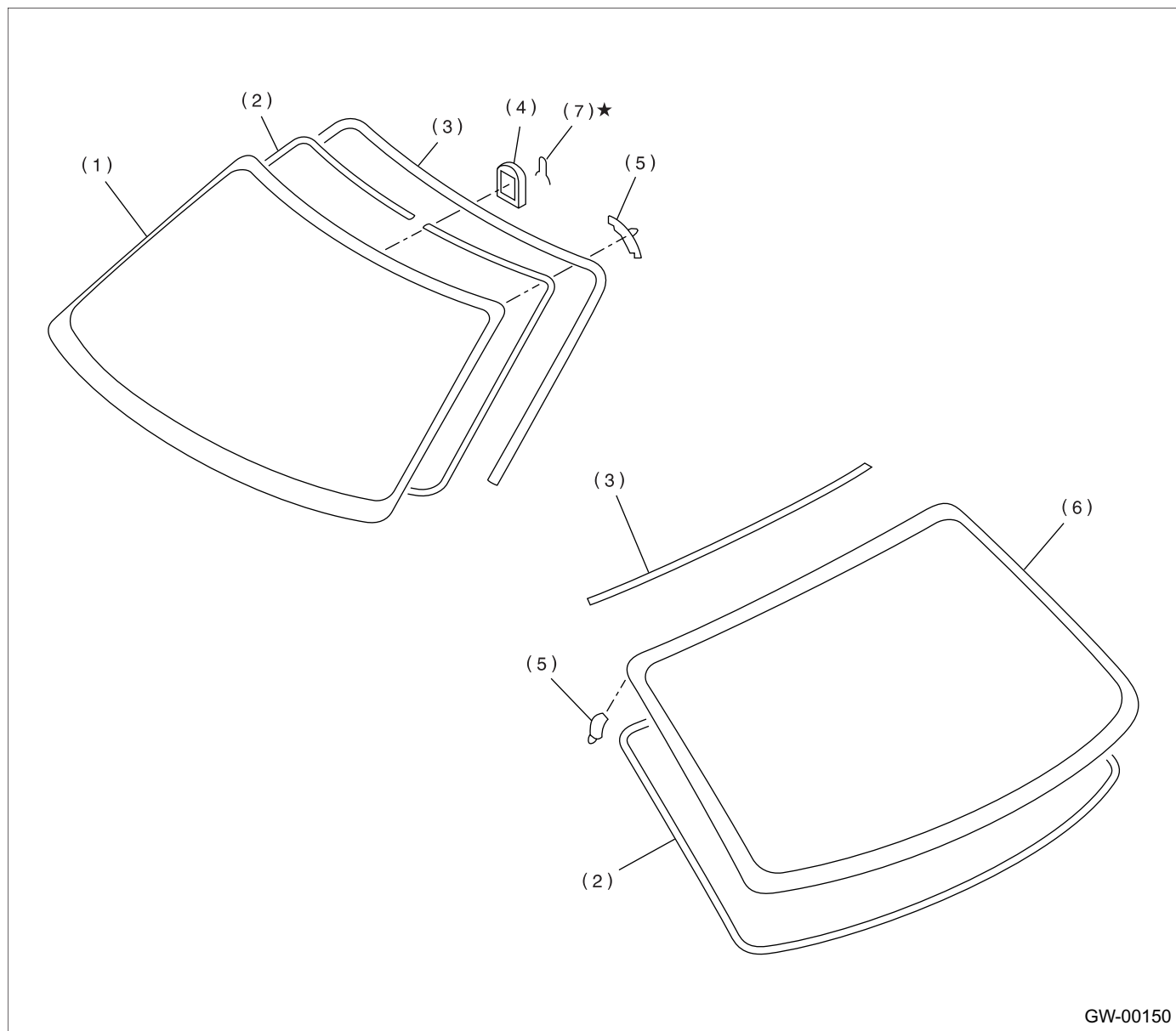
GENERAL DESCRIPTION

GLASS/WINDOWS/MIRRORS

1. General Description

A: COMPONENT

1. FIXED GLASS (SEDAN)



- (1) Windshield glass
- (2) Dam rubber
- (3) Molding

- (4) Rearview mirror mount
- (5) Locate pin
- (6) Rear window glass

- (7) Spring

GLASS/WINDOWS/MIRRORS

This exploded view diagram illustrates the assembly of a car door trim. The components are labeled as follows:

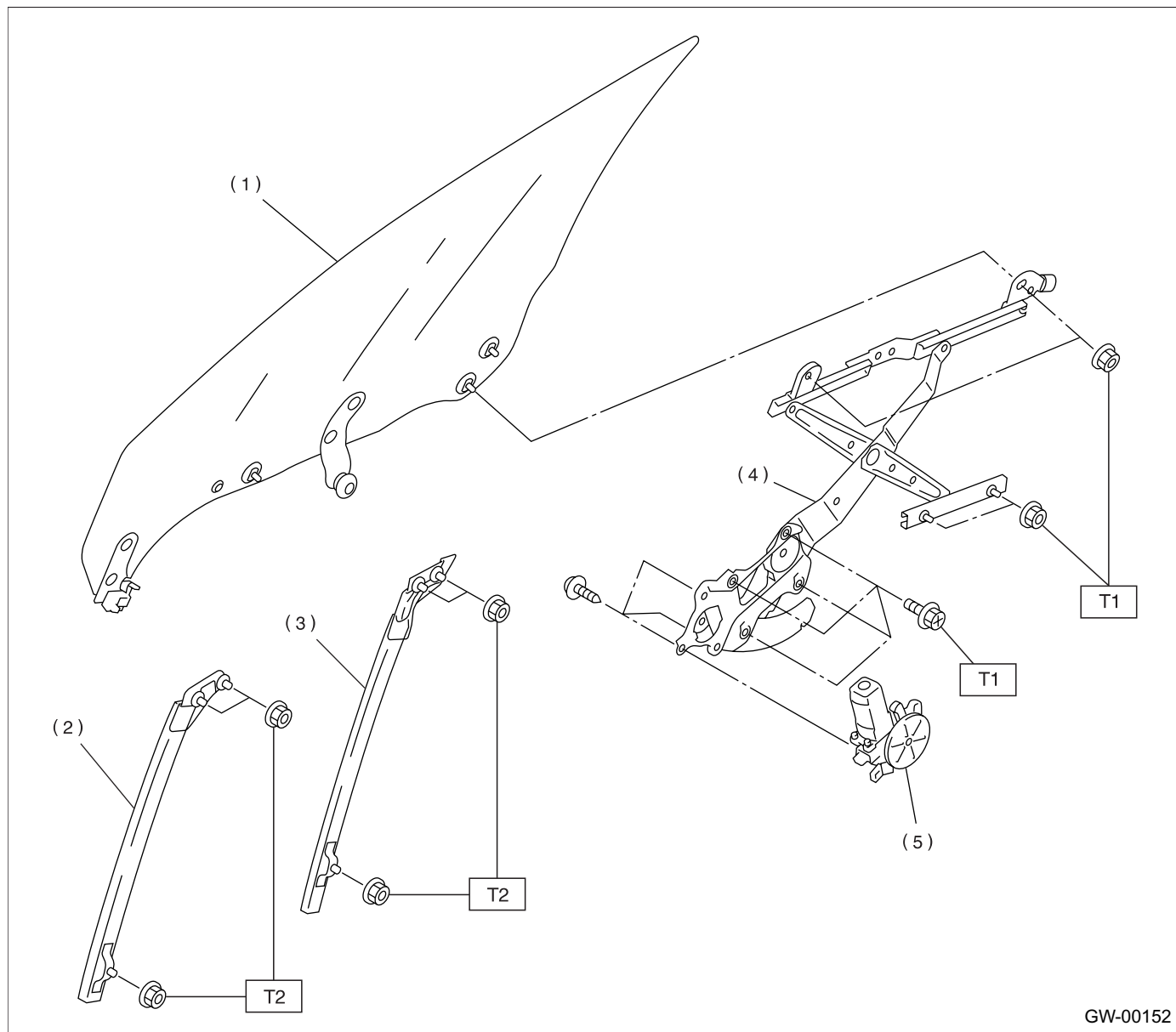
- (1) Main door trim panel
- (2) Trim molding (shown in two locations)
- (3) Trim molding
- (4) Trim molding clip
- (5) Trim molding clip
- (6) Trim molding clip
- (7) Trim molding
- (8) Trim molding clip (shown in three locations)
- (9) Door sill plate

- GW-3**

GENERAL DESCRIPTION

GLASS/WINDOWS/MIRRORS

3. FRONT DOOR GLASS



- (1) Glass
- (2) Door sash (Front)
- (3) Door sash (Rear)
- (4) Regulator ASSY

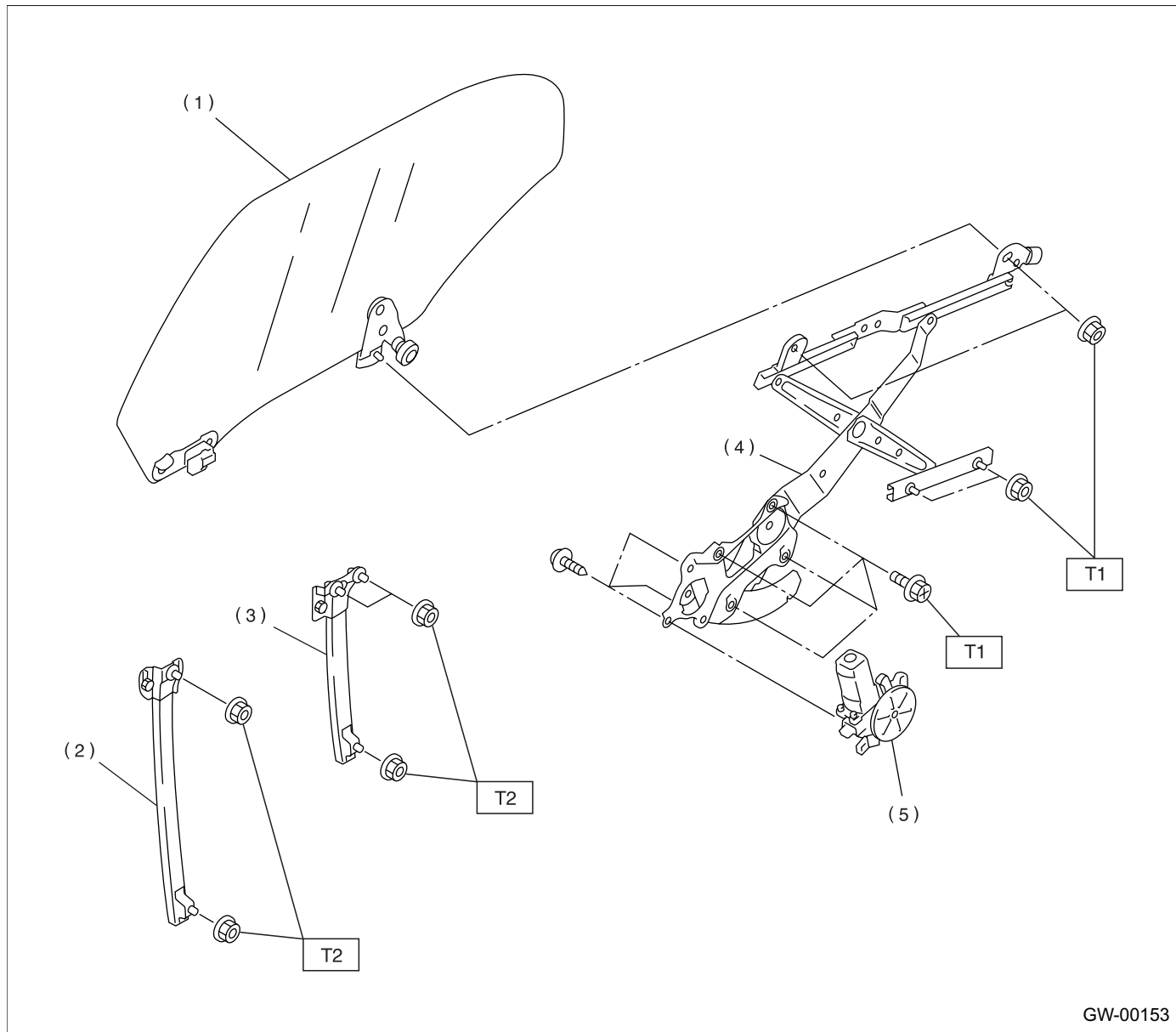
- (5) Motor ASSY

Tightening torque: N·m (kgf-m, ft-lb)

T1: 7.4 (0.75, 5.5)

T2: 13.7 (1.4, 10.1)

4. REAR DOOR GLASS



- (1) Glass
- (2) Door sash (Front)
- (3) Door sash (Rear)
- (4) Regulator ASSY

- (5) Motor ASSY

Tightening torque: N·m (kgf-m, ft-lb)

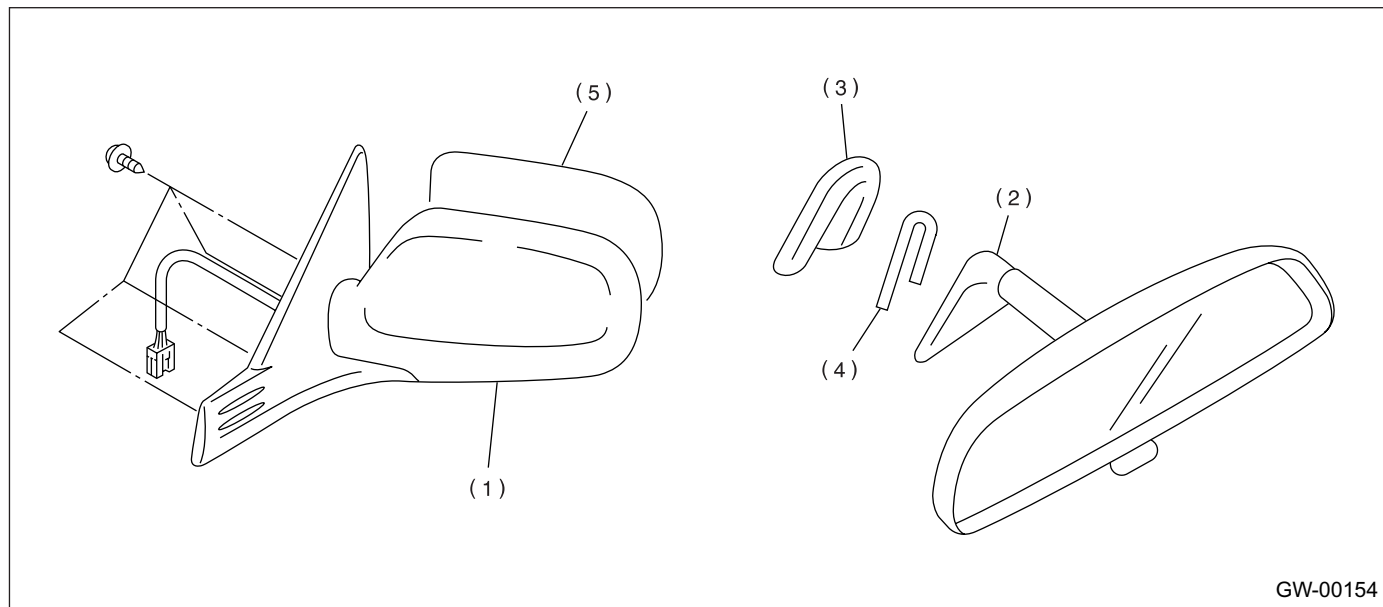
T1: 7.4 (0.75, 5.5)

T2: 13.7 (1.4, 10.1)

GENERAL DESCRIPTION

GLASS/WINDOWS/MIRRORS

5. MIRRORS



- (1) Outer mirror
(2) Inner rearview mirror

- (3) Mount
(4) Spring

- (5) Mirror

B: CAUTION

- When electrical connectors are disconnected, always conduct an operational check after connecting them again.
- Avoid impact and damage to the glass.

C: PREPARATION TOOL

TOOL NAME	REMARKS
Circuit Tester	Used for checking voltage and continuity.
Piano Wire	Used for window glass removal.
Windshield Knife	Used for window glass removal.