

22. Roof Trim

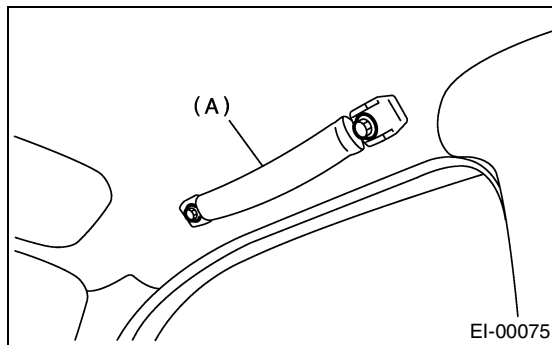
A: REMOVAL

CAUTION:

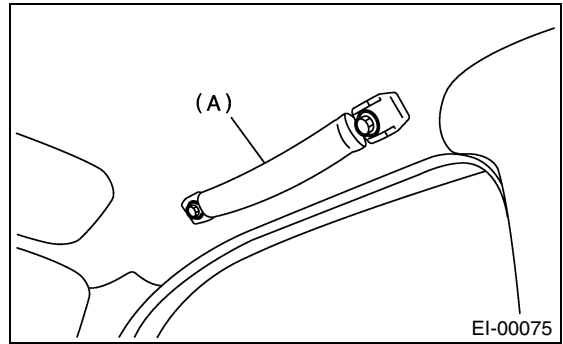
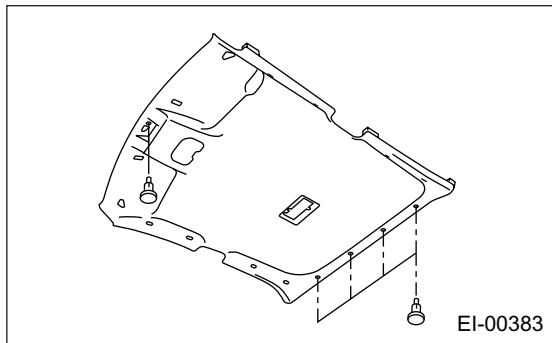
When removing the clip, use great care not to damage the roof trim.

1. SEDAN

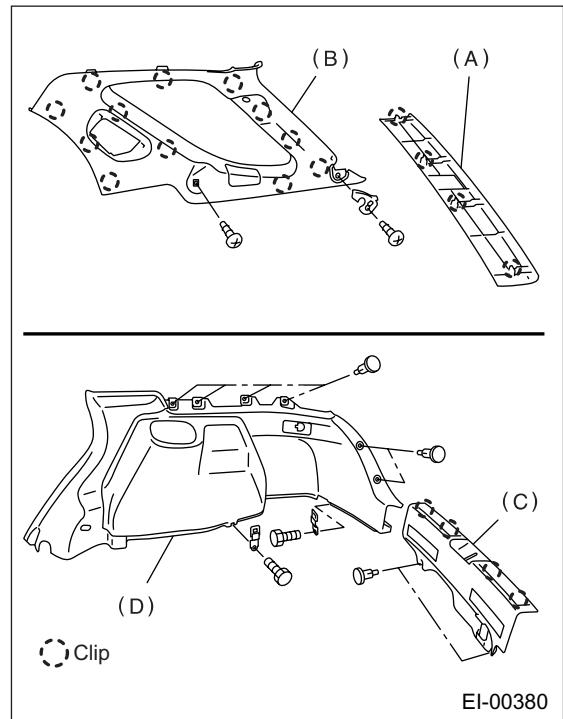
- 1) Disconnect the ground terminal from battery.
- 2) Remove the spots light. <Ref. to LI-25, REMOVAL, Spot Light.>
- 3) Remove the room light. <Ref. to LI-26, REMOVAL, Room Light.>
- 4) Remove the sun visor and hook on both sides. <Ref. to EI-50, REMOVAL, Sun Visor.>
- 5) Remove the assist-grips (A).



- 6) Remove the upper inner trim. <Ref. to EI-46, REMOVAL, Upper Inner Trim.>
- 7) Remove the quarter upper trim. <Ref. to EI-48, SEDAN, REMOVAL, Rear Quarter Trim.>
- 8) Remove the clips, and then remove the roof trim.



- 5) Remove the upper inner trim. <Ref. to EI-46, REMOVAL, Upper Inner Trim.>
- 6) Remove the rear quarter upper trim shown in the figure.
- 7) Remove the rear rail trim (A).
- 8) Remove the rear quarter upper trim (B) of both sides.



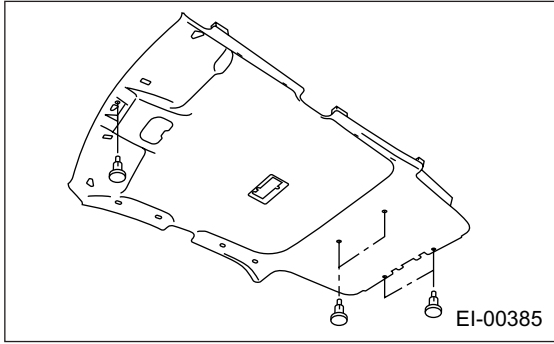
2. WAGON

- 1) Disconnect the ground terminal from battery.
- 2) Remove the room light. <Ref. to LI-26, REMOVAL, Room Light.>
- 3) Remove the sun visor and hook on both sides. <Ref. to EI-50, REMOVAL, Sun Visor.>
- 4) Remove the assist-grips (A).

ROOF TRIM

EXTERIOR/INTERIOR TRIM

9) Remove the clips, and then remove the roof trim.



B: INSTALLATION

Install in the reverse order of removal.