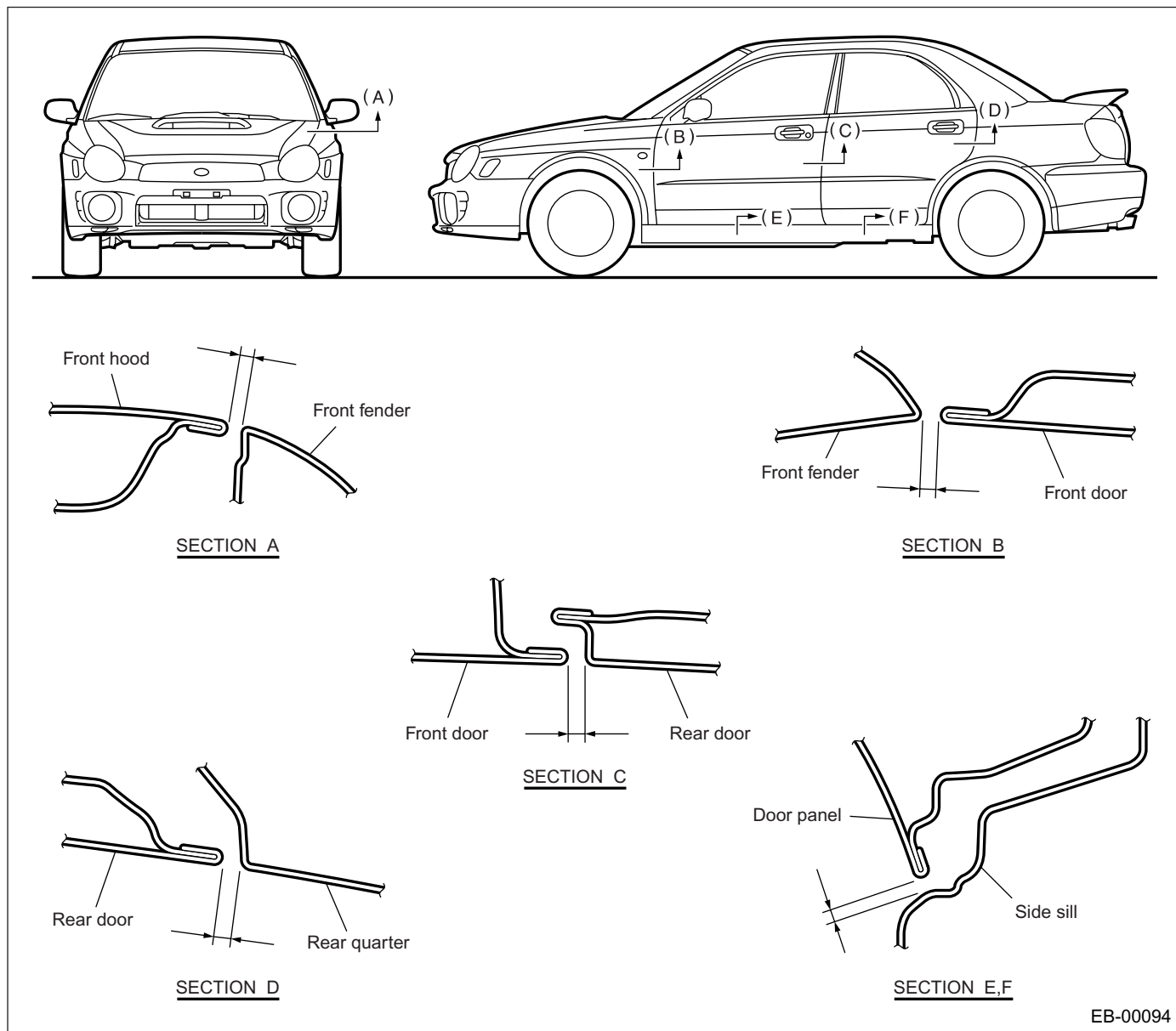


GENERAL DESCRIPTION

EXTERIOR BODY PANELS

1. General Description

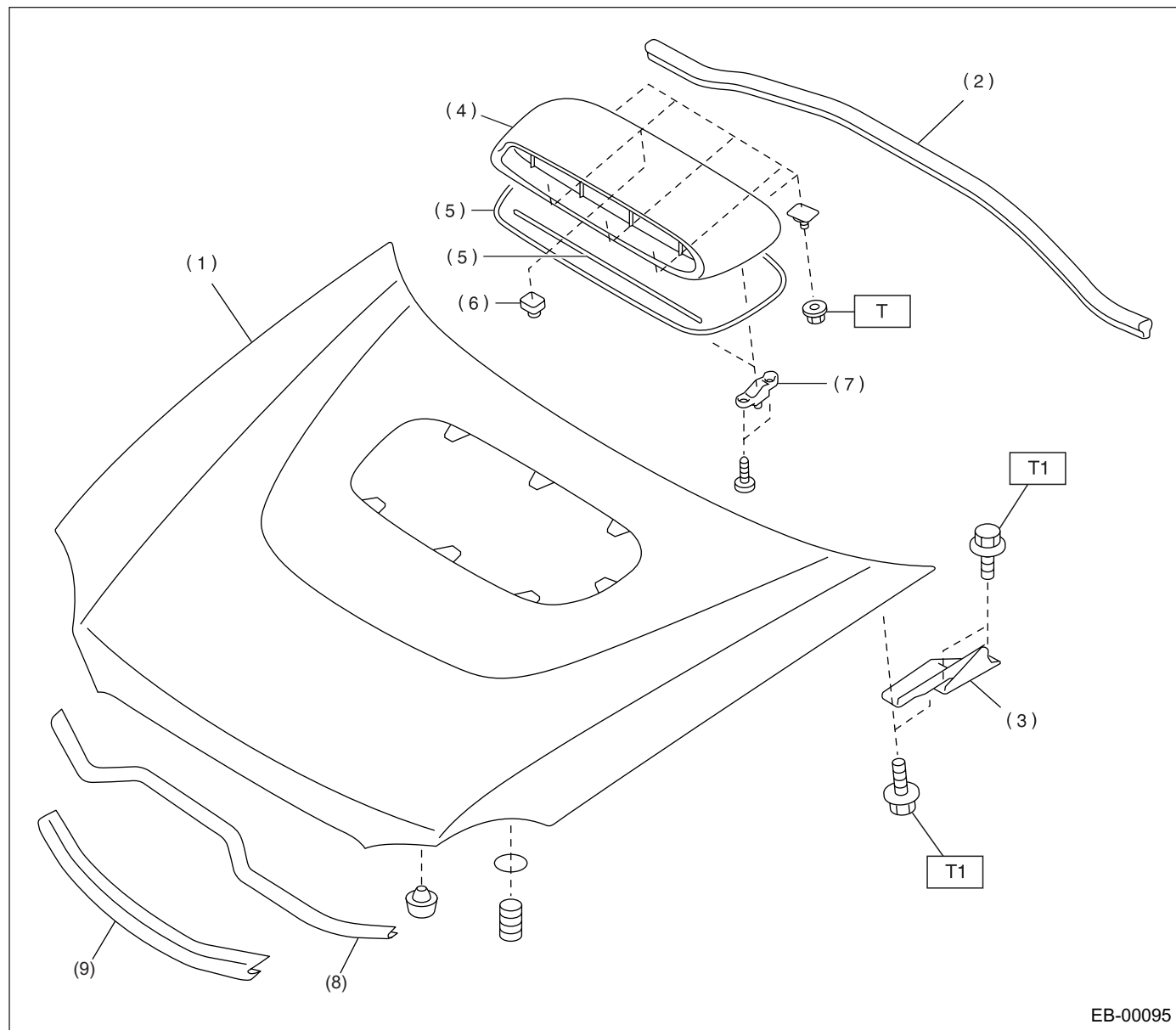
A: SPECIFICATIONS



Section	Part	Specification
A	Front hood to Front fender	NA: 4.0 mm \pm 1.0 (0.16 \pm 0.04 in) TURBO: 3.7 mm \pm 1.0 (0.15 \pm 0.04 in)
B	Front fender to Front door	4.6 mm \pm 1.0 (0.18 \pm 0.04 in)
C	Front door to Rear door	5.0 mm (0.20 in)
D	Rear door to Rear quarter	4.6 mm (0.18 in)
E, F	Door panel to Side sill	5.9 mm (0.23 in)

B: COMPONENT

1. FRONT HOOD



- | | |
|------------------------|------------------------|
| (1) Front hood | (6) Clip |
| (2) Seal (Front panel) | (7) Locking piece |
| (3) Hinge | (8) Seal (Intake duct) |
| (4) Hood grille | (Only turbo model) |
| (5) Packing | (9) Seal (Hood) |

Tightening torque: N·m (kgf-m, ft-lb)

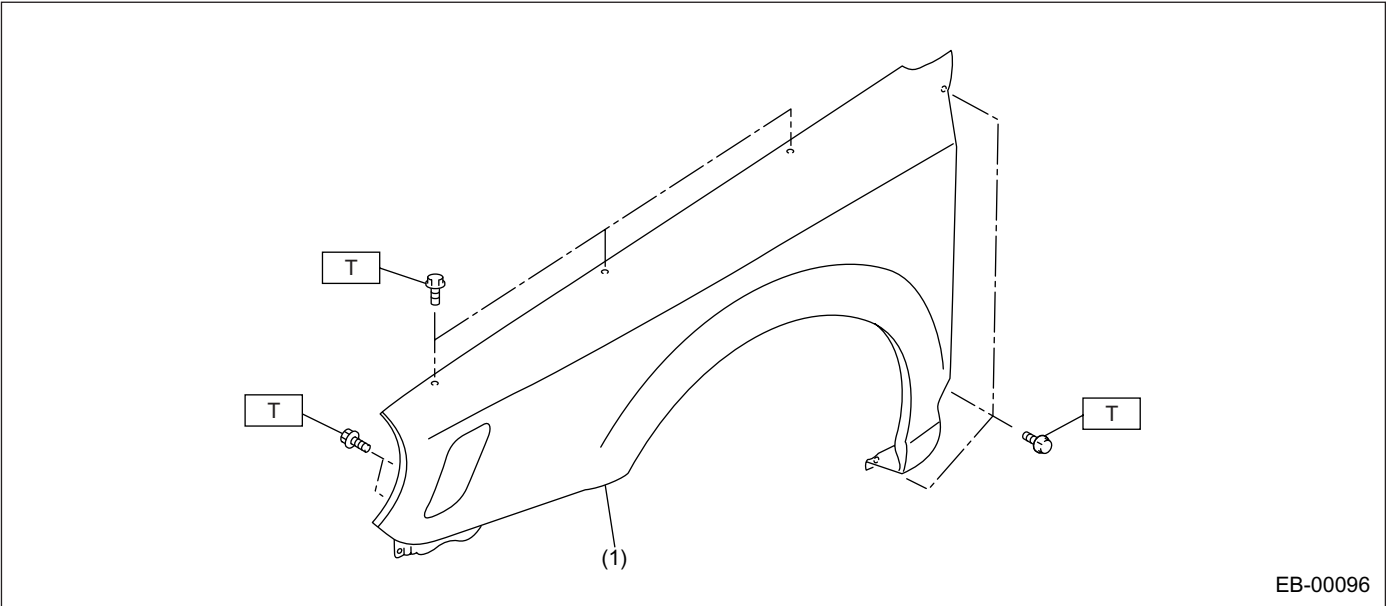
T: 4.4 (0.45, 3.25)

T1: 24.5 (2.5, 18.1)

GENERAL DESCRIPTION

EXTERIOR BODY PANELS

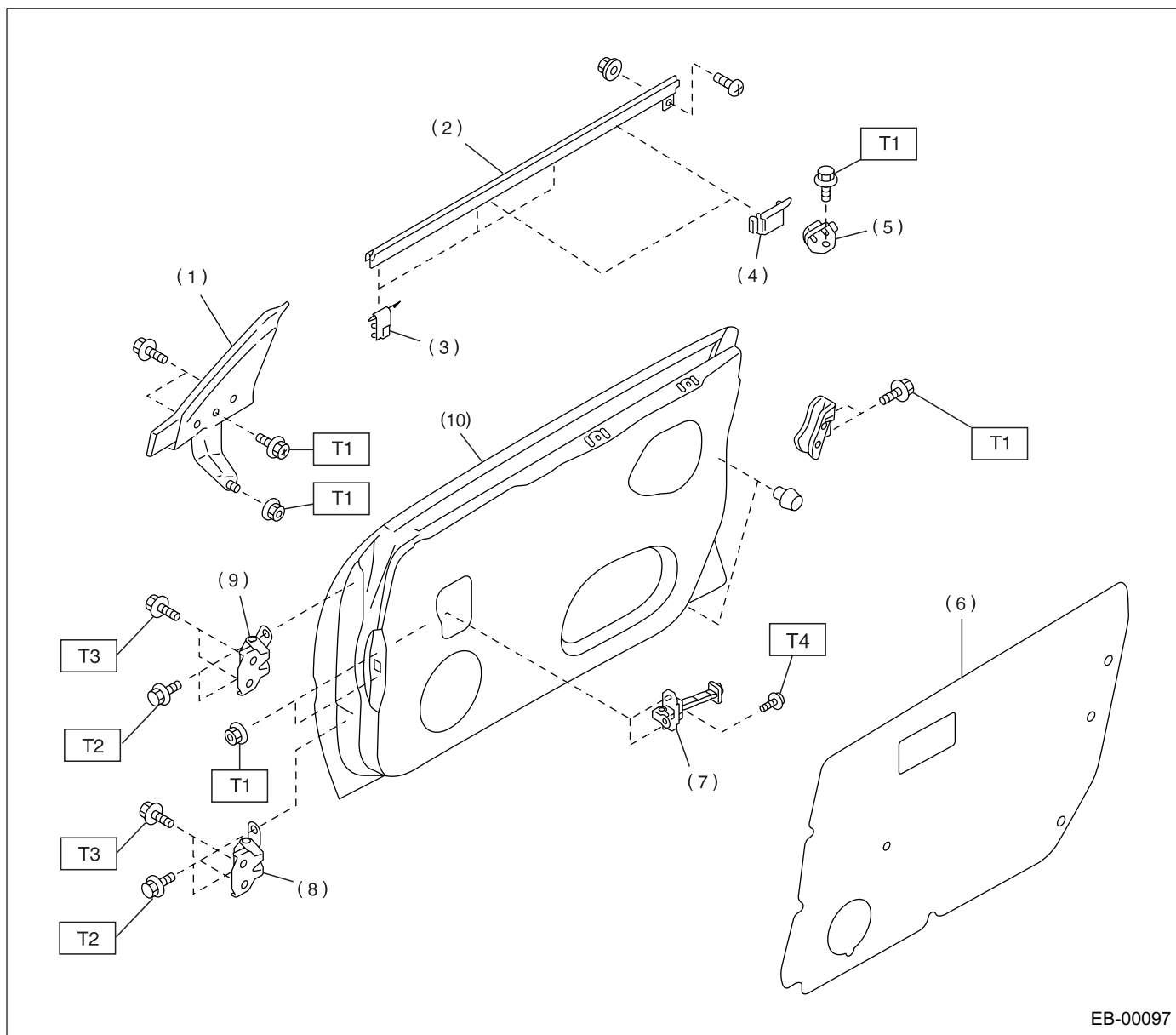
2. FRONT FENDER PANEL



(1) Front fender panel

Tightening torque: N·m (kgf-m, ft-lb)
T: 7.35 (0.75, 5.4)

3. FRONT DOOR PANEL



EB-00097

- | | |
|--------------------------------|-------------------|
| (1) Gusset | (6) Sealing cover |
| (2) Weatherstrip (Outer) | (7) Checker |
| (3) Clip (Weatherstrip, outer) | (8) Lower hinge |
| (4) Stabilizer (Outer) | (9) Upper hinge |
| (5) Stabilizer (Inner) | (10) Door panel |

Tightening torque: N·m (kgf-m, ft-lb)

T1: 7.4 (0.75, 5.5)

T2: 24.5 (2.5, 18.1)

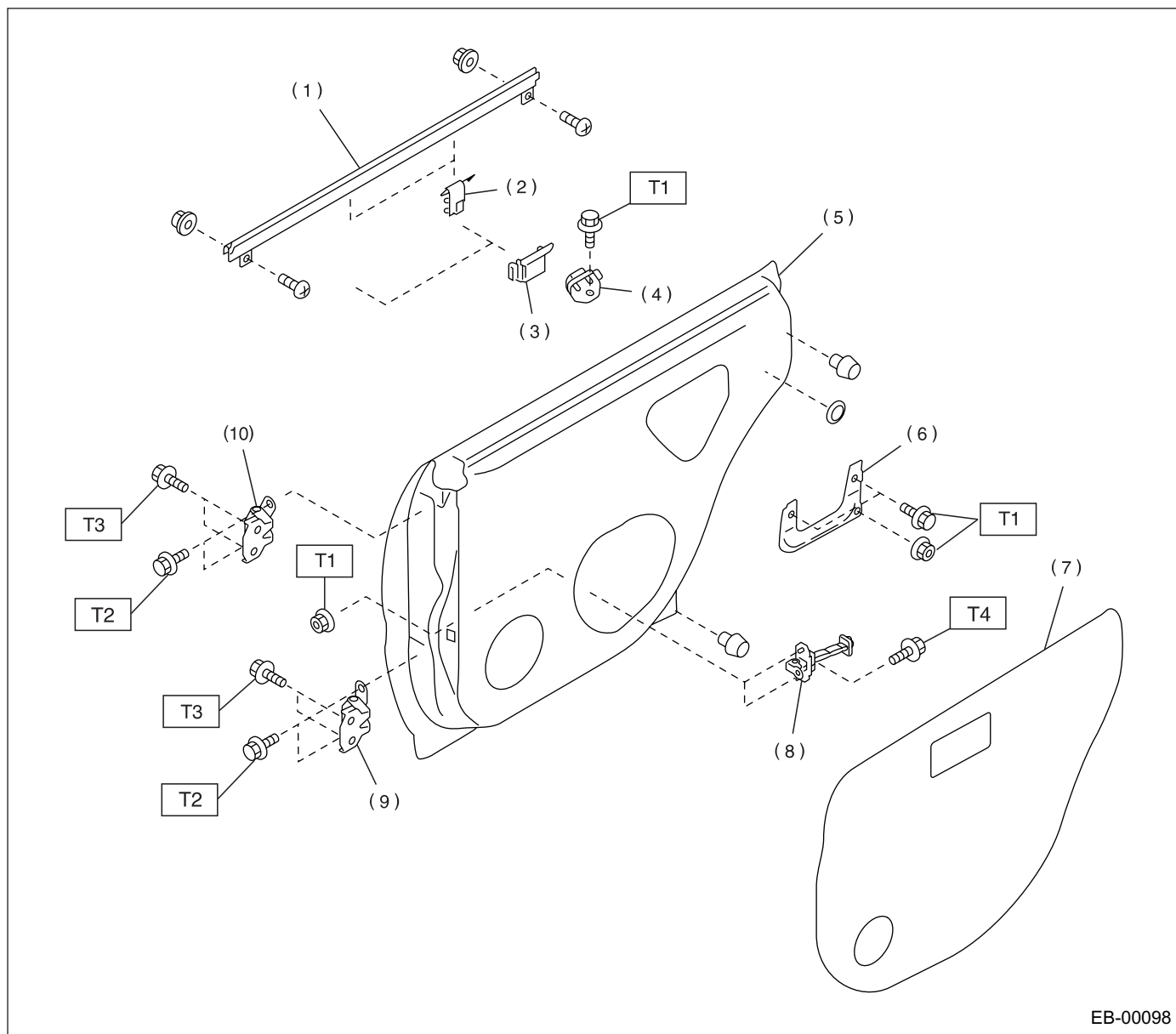
T3: 29.4 (3.0, 21.7)

T4: 32.3 (3.3, 23.8)

GENERAL DESCRIPTION

EXTERIOR BODY PANELS

4. REAR DOOR PANEL



- | | |
|--------------------------------|-------------------|
| (1) Weatherstrip (Outer) | (7) Sealing cover |
| (2) Clip (Weatherstrip, outer) | (8) Checker |
| (3) Stabilizer (Outer) | (9) Lower hinge |
| (4) Stabilizer (Inner) | (10) Upper hinge |
| (5) Door panel | |
| (6) Bracket | |

Tightening torque: N·m (kgf·m, ft·lb)

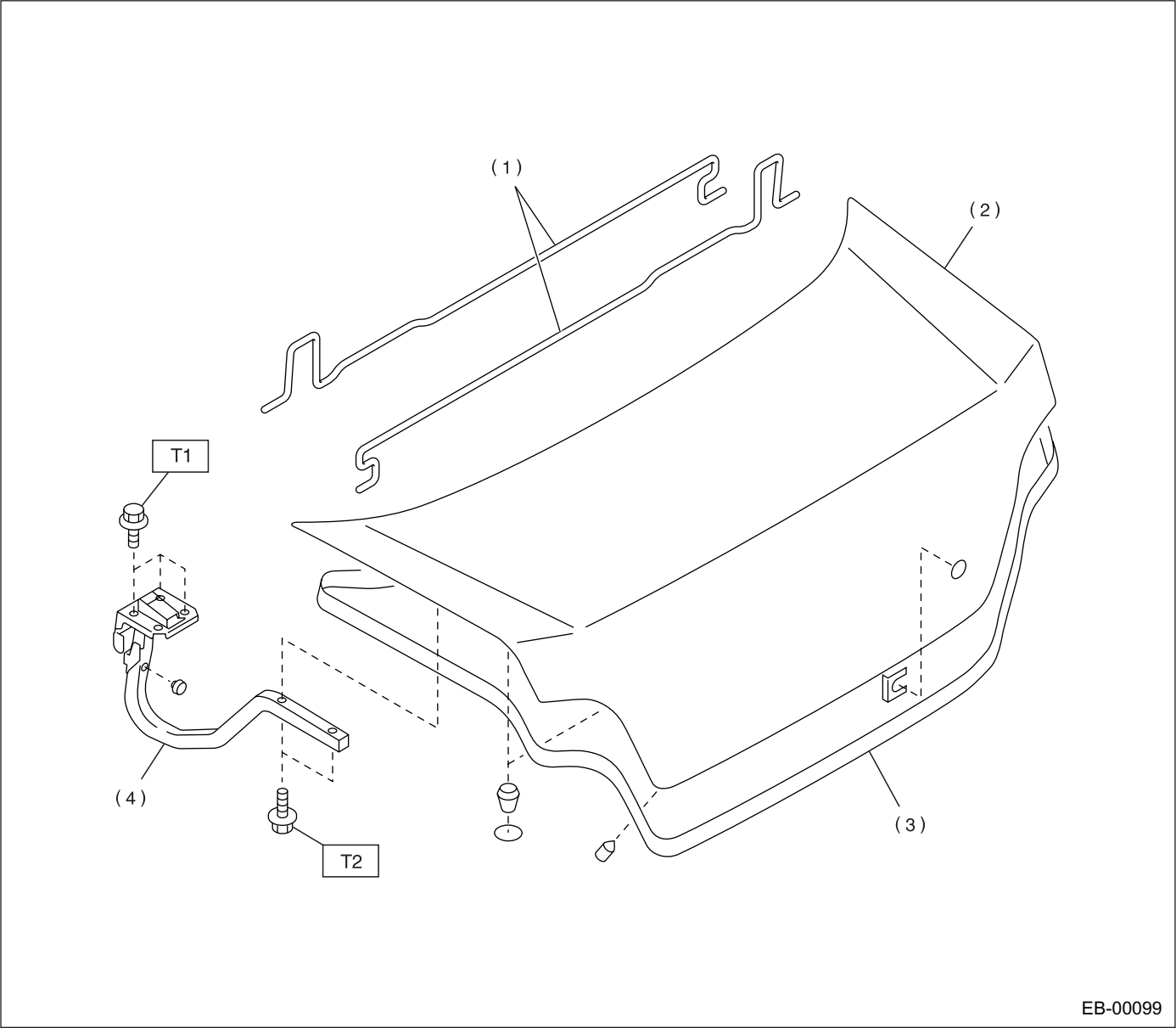
T1: 7.4 (0.75, 5.5)

T2: 24.5 (2.5, 18.1)

T3: 29.4 (3.0, 21.7)

T4: 32.3 (3.3, 23.8)

5. TRUNK LID PANEL



EB-00099

- (1) Torsion bar
- (2) Trunk lid
- (3) Weatherstrip

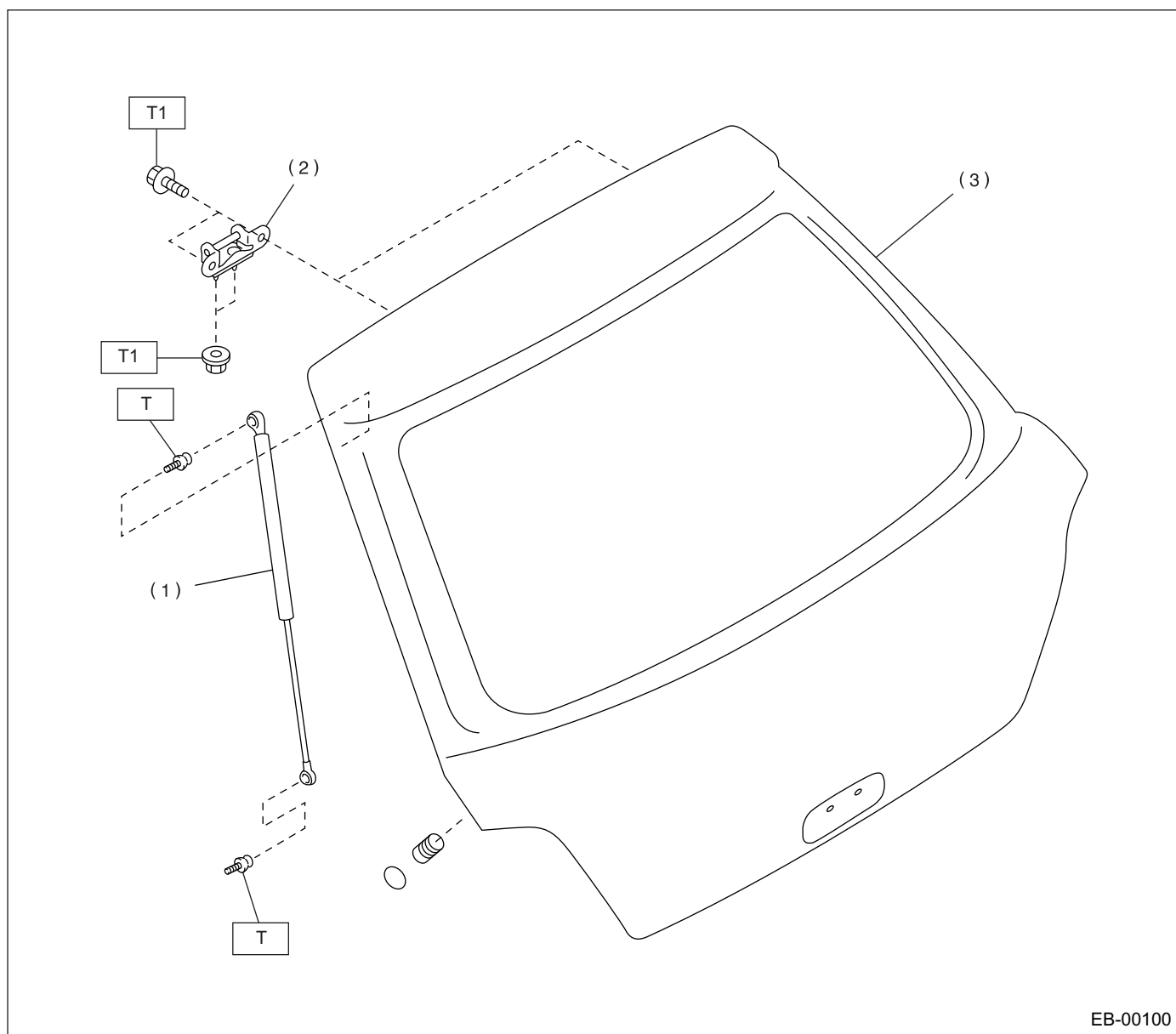
- (4) Hinge ASSY

Tightening torque: N·m (kgf·m, ft·lb)
T1: 7.5 (0.76, 5.5)
T2: 17.6 (1.8, 13)

GENERAL DESCRIPTION

EXTERIOR BODY PANELS

6. REAR GATE PANEL



EB-00100

- (1) Gas stay
- (2) Hinge
- (3) Rear gate

Tightening torque: N·m (kgf·m, ft·lb)

T: 13.7 (1.4, 10.1)

T1: 25 (2.5, 18.1)

C: CAUTION

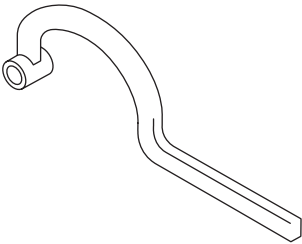
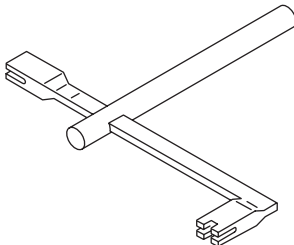
- Exterior body panels are heavy. Do not drop and damage the panels. During removal and installation, do not damage the panel painting surface.
- While removing mounting bolts, using assistance devices such as a support jack will help support the panel.
- Be careful not to lose small parts.

GENERAL DESCRIPTION

EXTERIOR BODY PANELS

D: PREPARATION TOOL

1. SPECIAL TOOLS

ILLUSTRATION	TOOL NUMBER	DESCRIPTION	REMARKS
 ST-925610000	925610000	WRENCH	Used for removing and installing door hinge.
 ST-927780000	927780000	REMOVER	Used for removing and installing trunk torsion bar.

2. GENERAL TOOL

TOOL NAME	REMARKS
Support Jack	Used for supporting door panel.