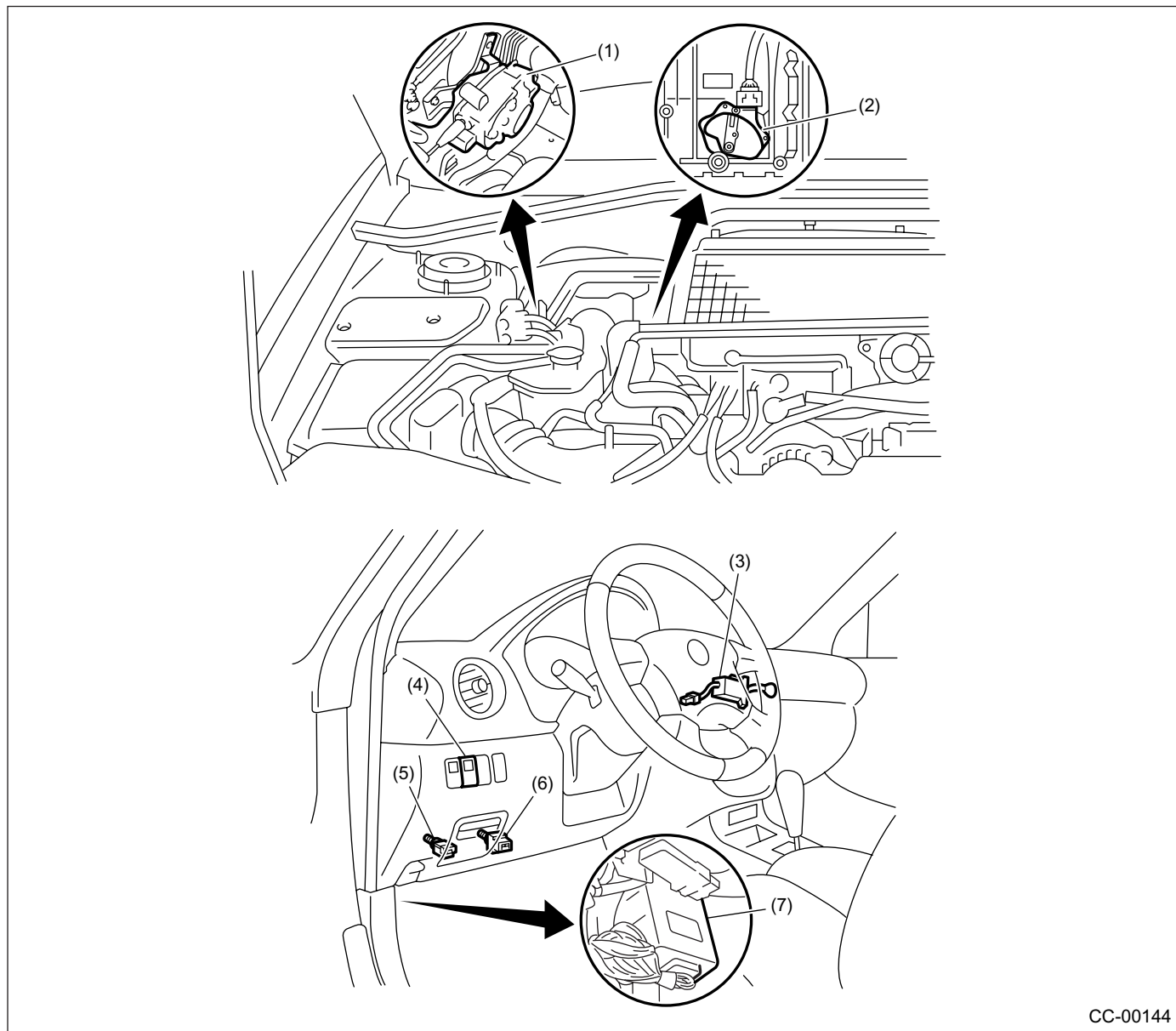


1. General Description

A: COMPONENT



CC-00144

- | | | |
|-----------------------------------|--------------------------------|---------------------------|
| (1) Actuator | (4) Cruise control main switch | (7) Cruise control module |
| (2) Inhibitor switch (AT) | (5) Clutch switch (MT) | |
| (3) Cruise control command switch | (6) Stop and brake switch | |

B: CAUTION

- Before disassembling or reassembling parts, always disconnect the battery ground cable. When repairing the radio, control module and other parts with memory functions, make note of the memory before disconnecting the battery ground cable. All memory will be erased.
- Reassemble the parts in the reverse order of disassembly unless otherwise indicated.
- Adjust the parts to specifications specified in this manual.
- Connect the connectors and hoses securely during reassembly.
- After reassembly, ensure functional parts operate properly.

C: PREPARATION TOOL

TOOL NAME	REMARKS
Circuit Tester	Used for measuring resistance and voltage.