

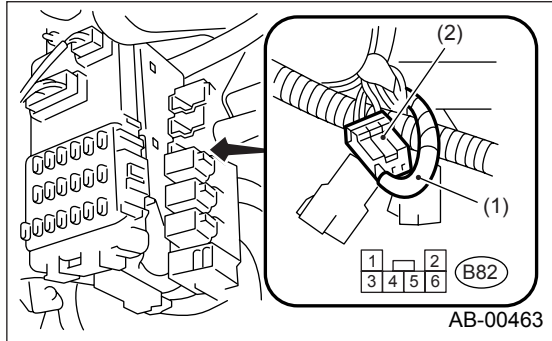
# READ DIAGNOSTIC TROUBLE CODE

## AIRBAG SYSTEM (DIAGNOSTICS)

### 8. Read Diagnostic Trouble Code

#### A: OPERATION

- 1) Turn the ignition switch ON.
- 2) Connect the diagnosis terminal (1) to the diagnosis connector (2) terminal No. 1 in the driver's seat lower cover area.



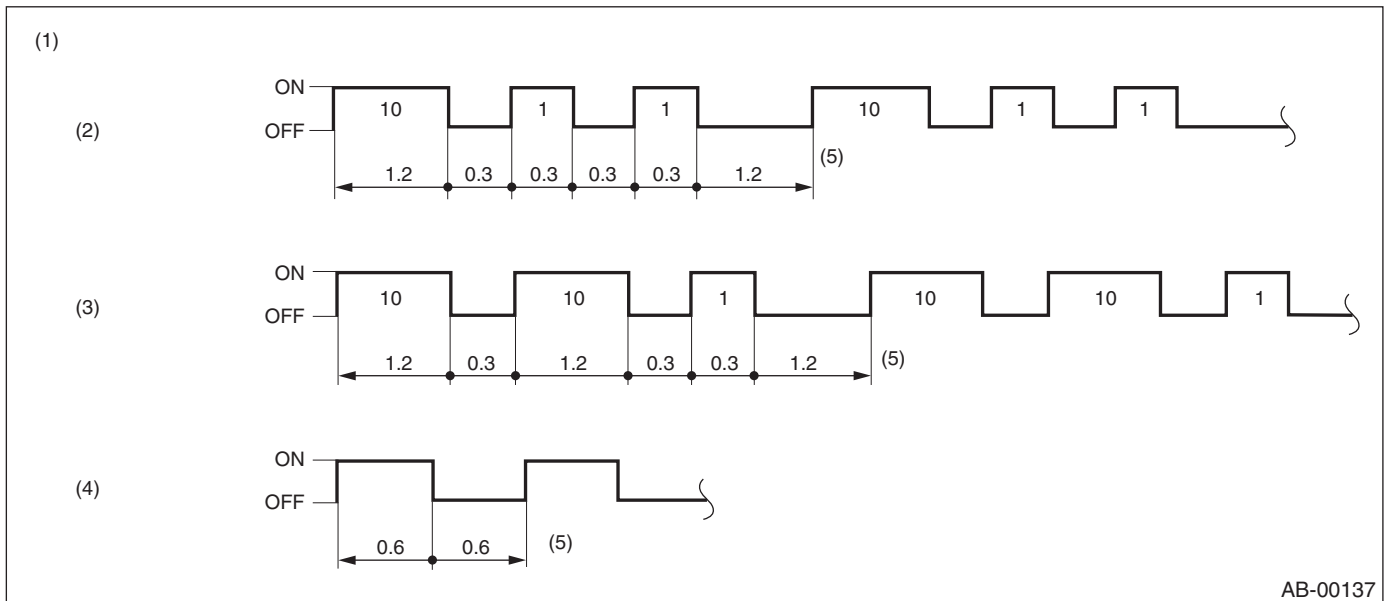
3) Read trouble code by identifying the way the air bag warning light flashes.

The airbag warning light flashes a code corresponding to the faulty parts.

The long segment (1.2 sec on) indicates a “ten”, and the short segment (0.3 sec on) indicates a “one”.

#### NOTE:

- “List of Diagnostic Trouble Code” <Ref. to AB-34, List of Diagnostic Trouble Code.>
- “Airbag Warning Light Failure” <Ref. to AB-27, Airbag Warning Light Failure.>



- 4) Turn the ignition switch OFF, and disconnect the diagnosis terminal from the diagnosis connector terminal No 1.
- 5) Wind the tape around the diagnosis terminal and return it to its original position.