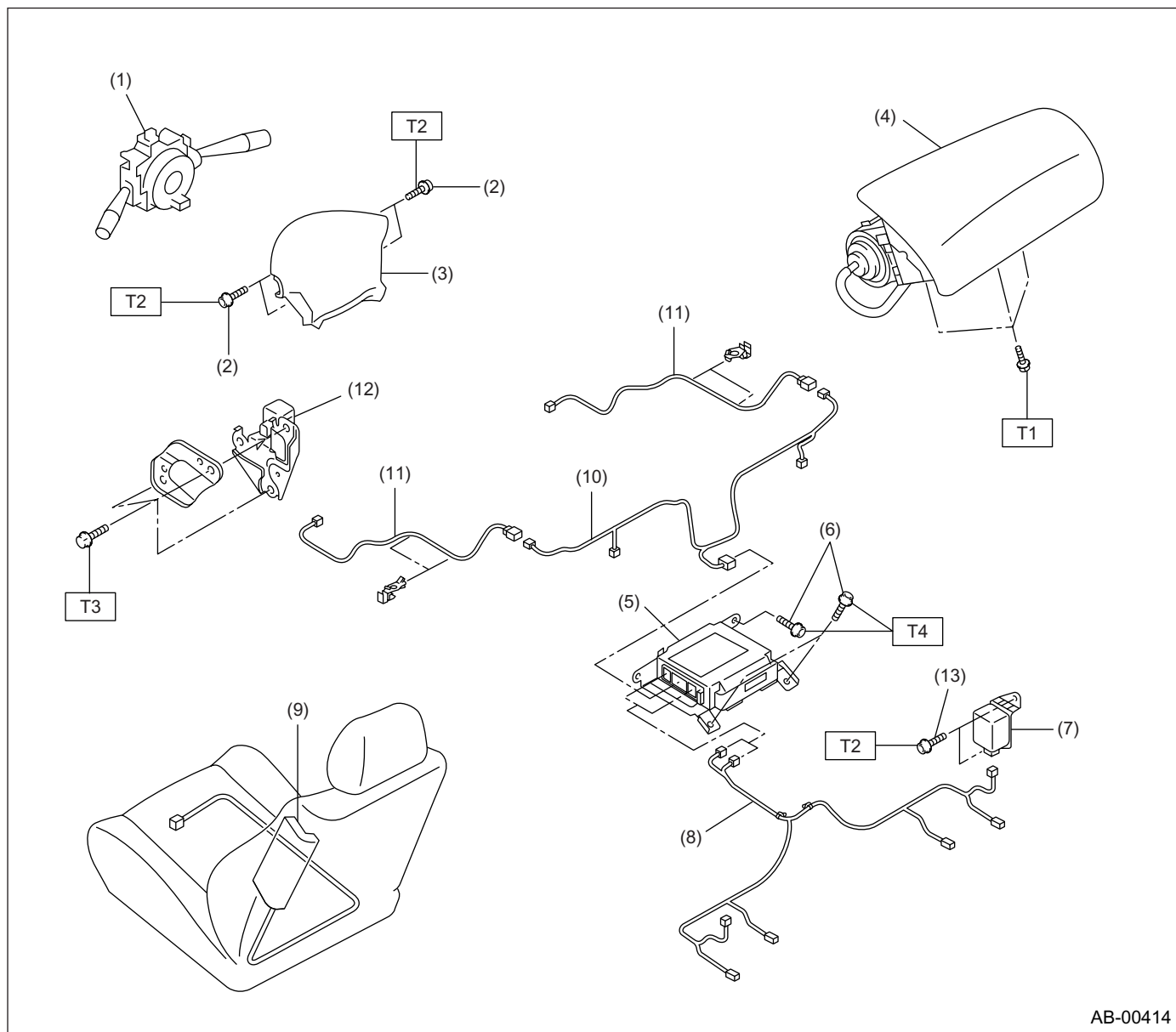


GENERAL DESCRIPTION

AIRBAG SYSTEM

1. General Description

A: COMPONENT



- | | |
|---|-------------------------------|
| (1) Combination switch ASSY with roll connector | (7) Side airbag sensor |
| (2) TORX® bolt T30 | (8) Side airbag harness |
| (3) Airbag module ASSY (Driver) | (9) Side airbag module |
| (4) Airbag module ASSY (Passenger) | (10) Airbag main harness |
| (5) Airbag control module | (11) Front sub sensor harness |
| (6) TORX® bolt T40 | (12) Front sub sensor |
| | (13) TORX® bolt T30 |

Tightening torque: N·m (kgf-m, ft-lb)

T1: 7.4 (0.75, 5.4)

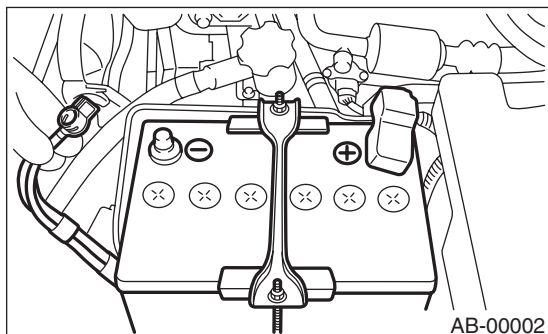
T2: 10 (1.0, 7.2)

T3: 20 (2.0, 14.5)

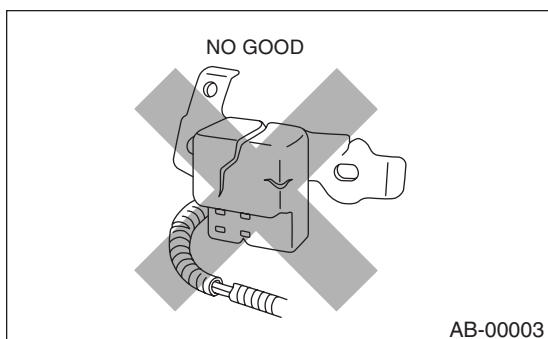
T4: 25 (2.5, 18.1)

B: CAUTION

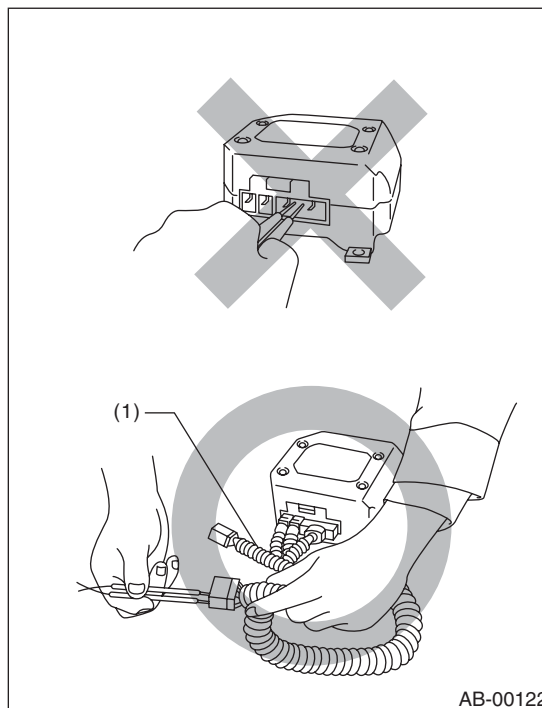
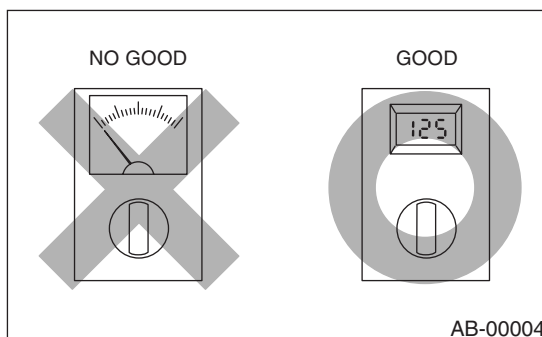
- When servicing a vehicle, be sure to turn the ignition switch OFF, disconnect the ground terminal from battery, and wait for more than 20 seconds before starting work.
- The airbag system is fitted with a backup power source. If the airbag system is serviced within 20 seconds after the ground terminal is disconnected, it may inflate.



- If the sensors, airbag module, airbag control module, pretensioner and harness are deformed or damaged, replace them with new genuine parts.

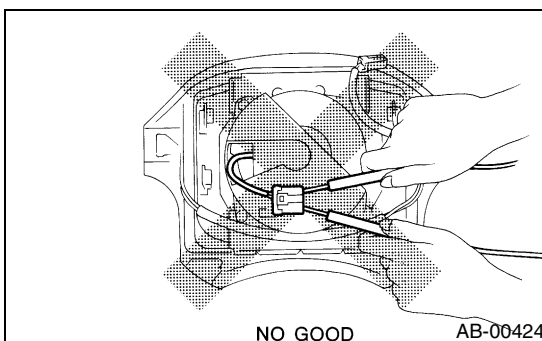


- Do not use the airbag or pretensioner parts from other vehicles. Always replace the defective parts with new parts.
 - Never re-use a deployed airbag or pretensioner.
 - When checking the system, be sure to use a digital circuit tester.
- Use of an analog circuit tester may cause the airbag to activate erroneously.
- When checking, use a test harness. Do not directly apply the tester probe to any connector terminal of the airbag.



(1) Test harness

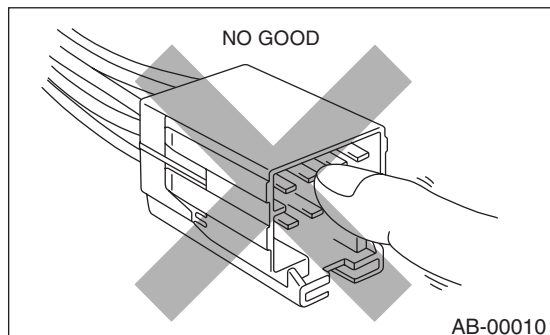
- Do not check continuity of the driver, passenger, side airbag modules and pretensioner.



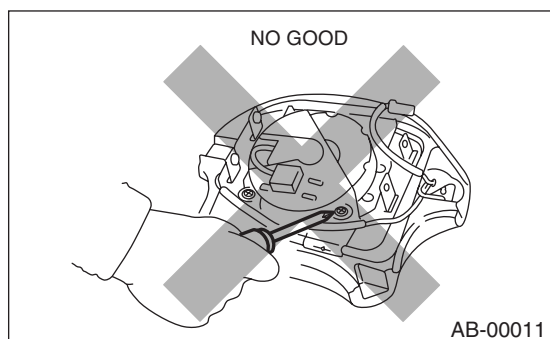
GENERAL DESCRIPTION

AIRBAG SYSTEM

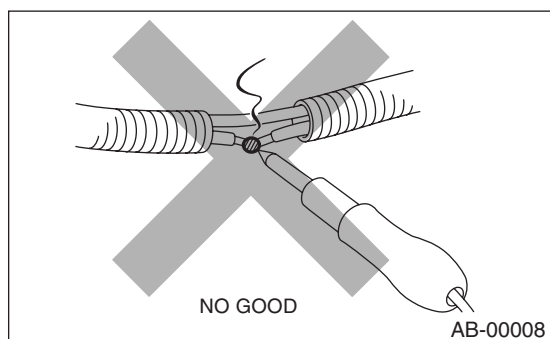
- Do not allow water or oil to come in contact with the connector terminals. Do not touch the connector terminals.



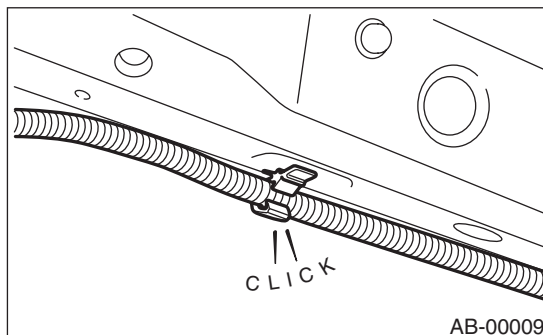
- The airbag module (driver, passenger and side) and pretensioner must not be disassembled.



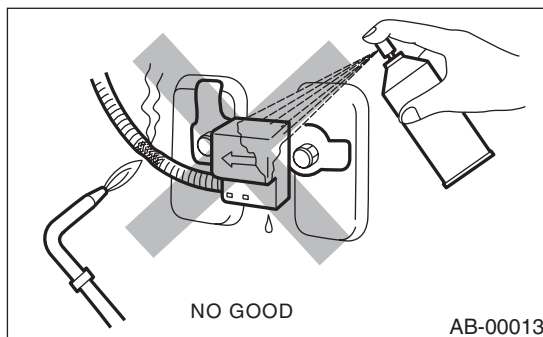
- If any damage, opening, or rust is found on the airbag system wire harness, do not attempt to repair using soldering equipment. Be sure to replace the faulty harness with a new genuine part.



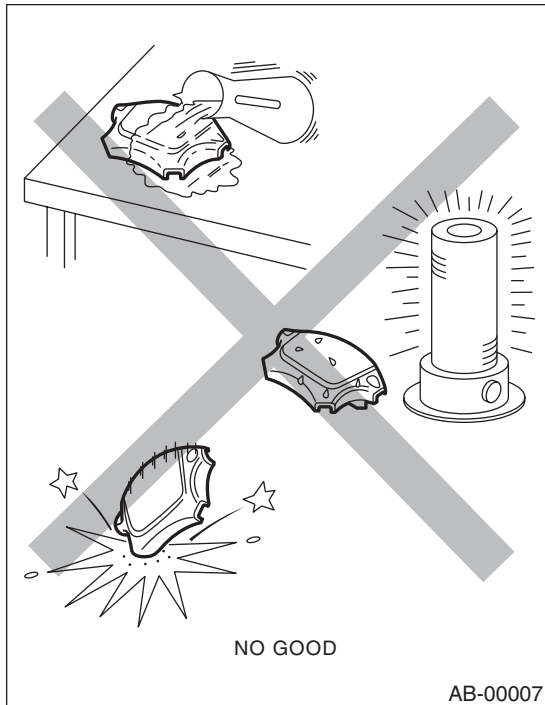
- Install the wire harness securely with the specified clips to avoid interference or tangled up with other parts.



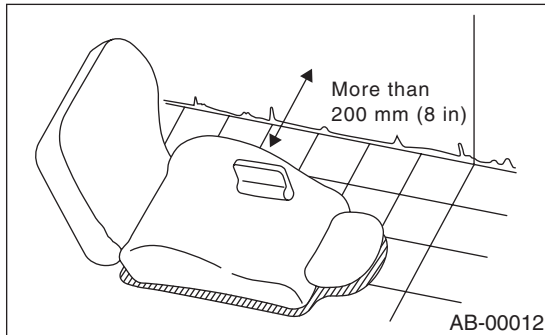
- When painting or performing sheet metal work on the front part of the vehicle, including the front wheel apron, front fender, and front side frame, remove the front sub sensors and wire harness of the airbag system.
- When painting or performing sheet metal work on the side of the vehicle, including the side sill, center pillar, and front and rear doors, remove the side airbag sensors and wire harness of the airbag system.



- Do not drop the airbag modulator parts, subject them to high temperature over 93°C (199°F), or let water, oil, or grease get on them; otherwise, the internal parts may be damaged and reliability greatly lowered.



- The removed front seat with the airbag module must be kept at least 200 mm (8 in) away from walls and other objects.

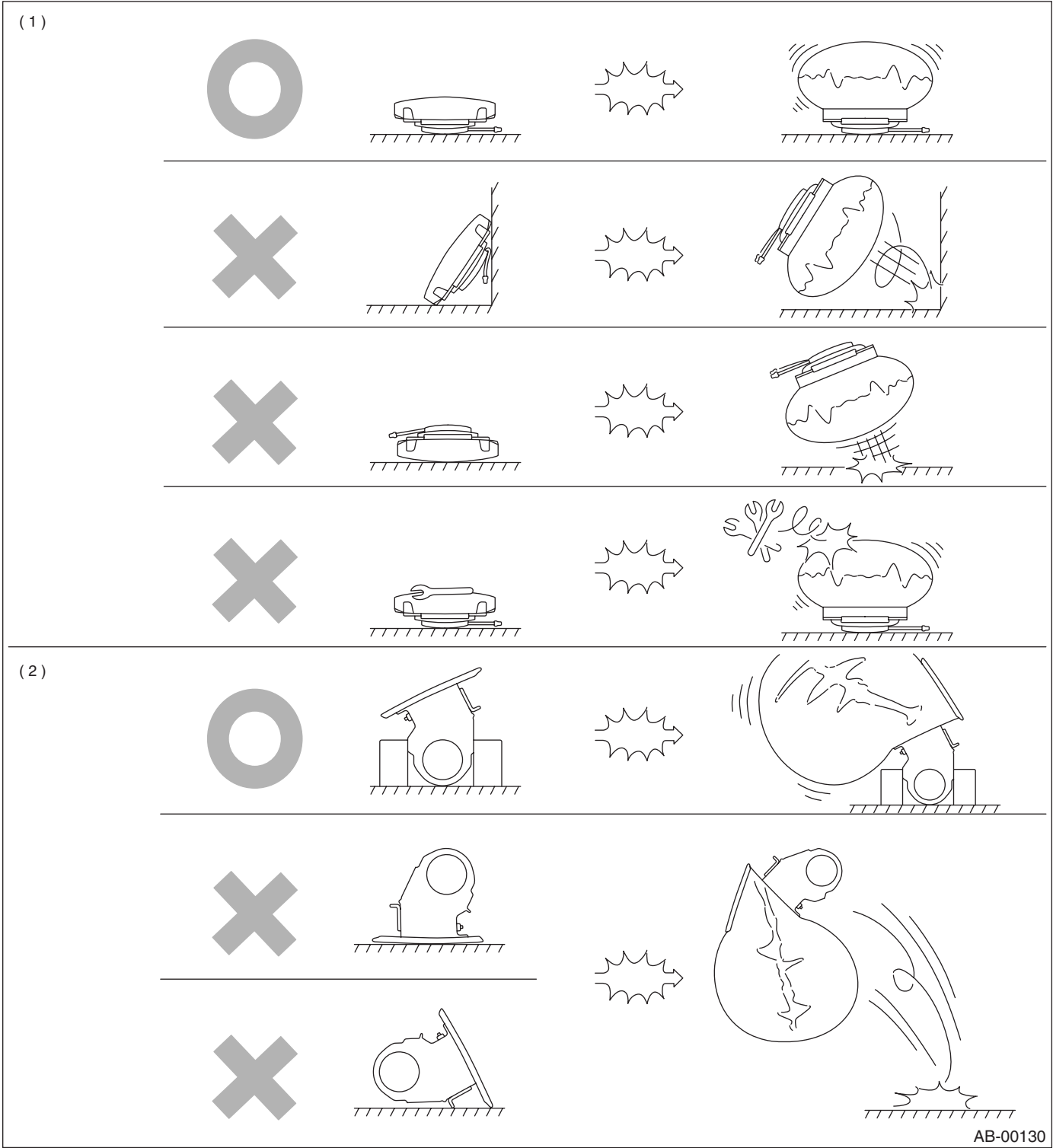


- When storing a removed airbag module, do not place any objects on it or pile airbag modules on top of each other. If the airbag inflates for some reason when it is placed with its pad side facing down-

GENERAL DESCRIPTION

AIRBAG SYSTEM

ward or under any object, a serious accident may result.



(1) Driver's seat module

(2) Passenger's seat module

C: PREPARATION TOOL

1. GENERAL TOOL

TOOL NAME	REMARKS
TORX® T30	Used for removal/installation of drivers airbag module
TORX® T40 (Tamper resistant type)	Used for removal/installation of airbag control module
TORX® T30 (Tamper resistant type)	Used for removal of side airbag sensor.