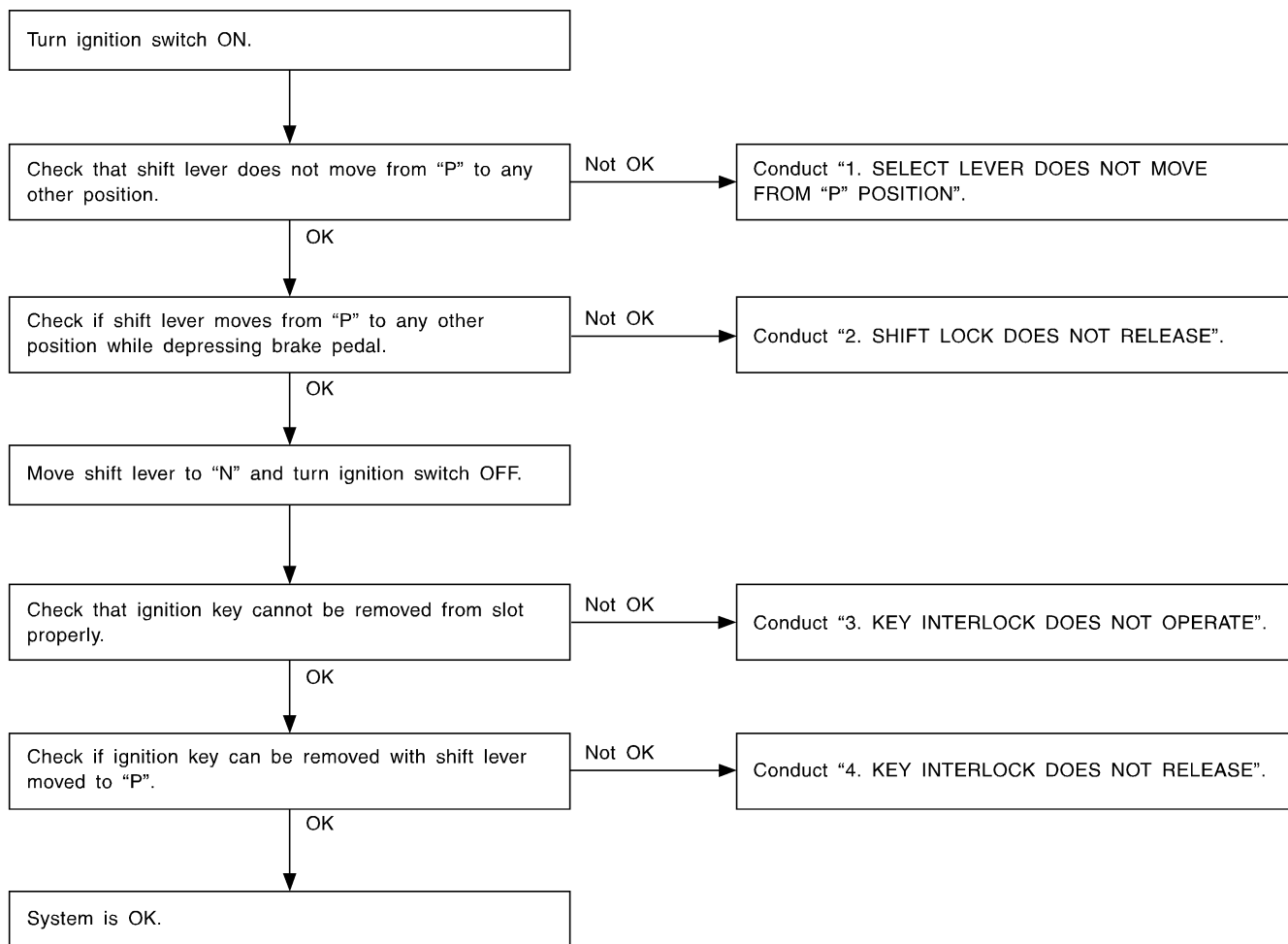


4. General Diagnostic S501278

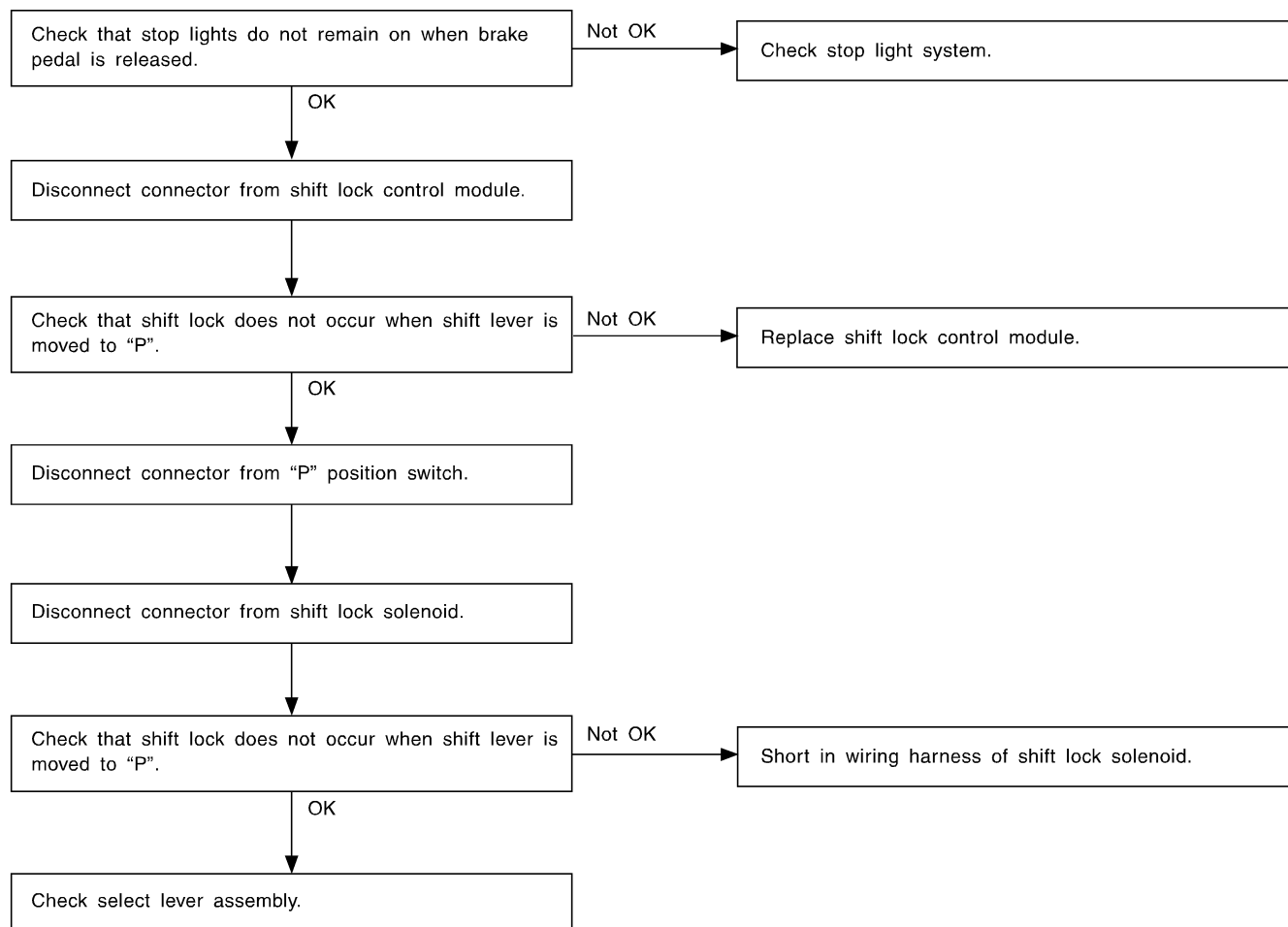
A: INSPECTION S501278A10



H6M0504C

**1. SELECT LEVER DOES NOT MOVE
FROM "P" POSITION**

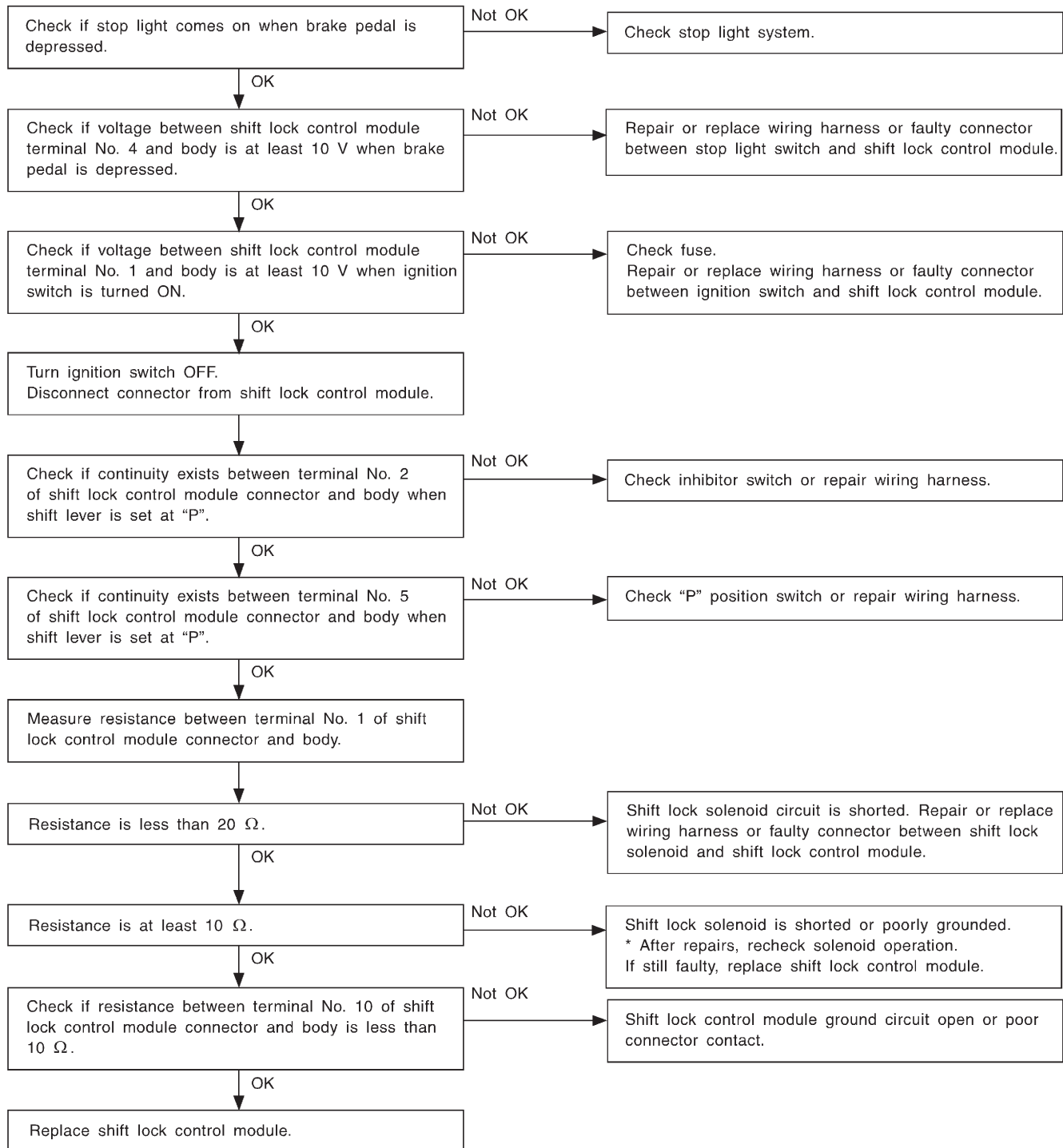
SS01278A1001



H6M0505B

2. SHIFT LOCK DOES NOT RELEASE

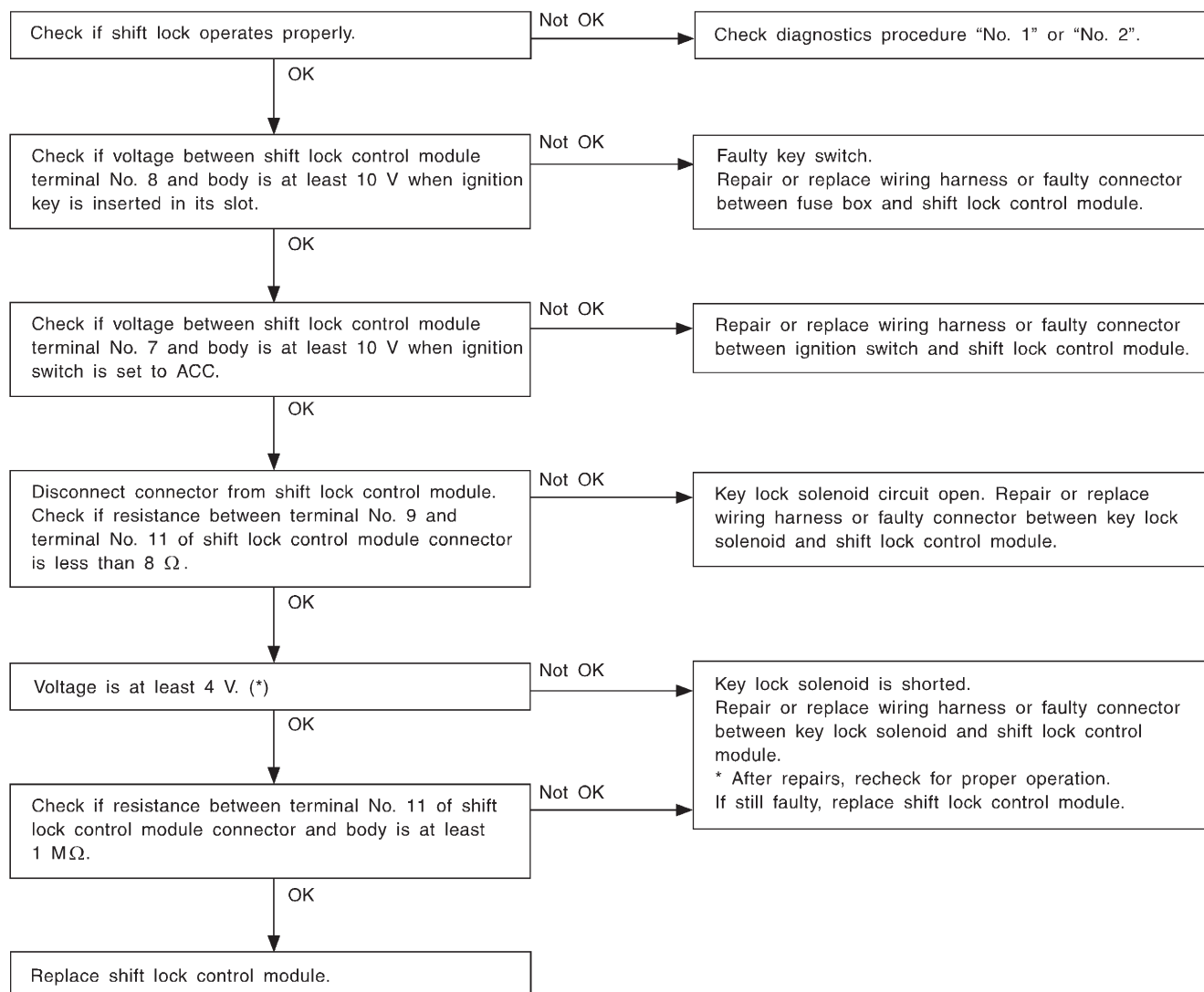
S501278A1002



H6M0506

3. KEY INTERLOCK DOES NOT OPERATE

S501278A1003

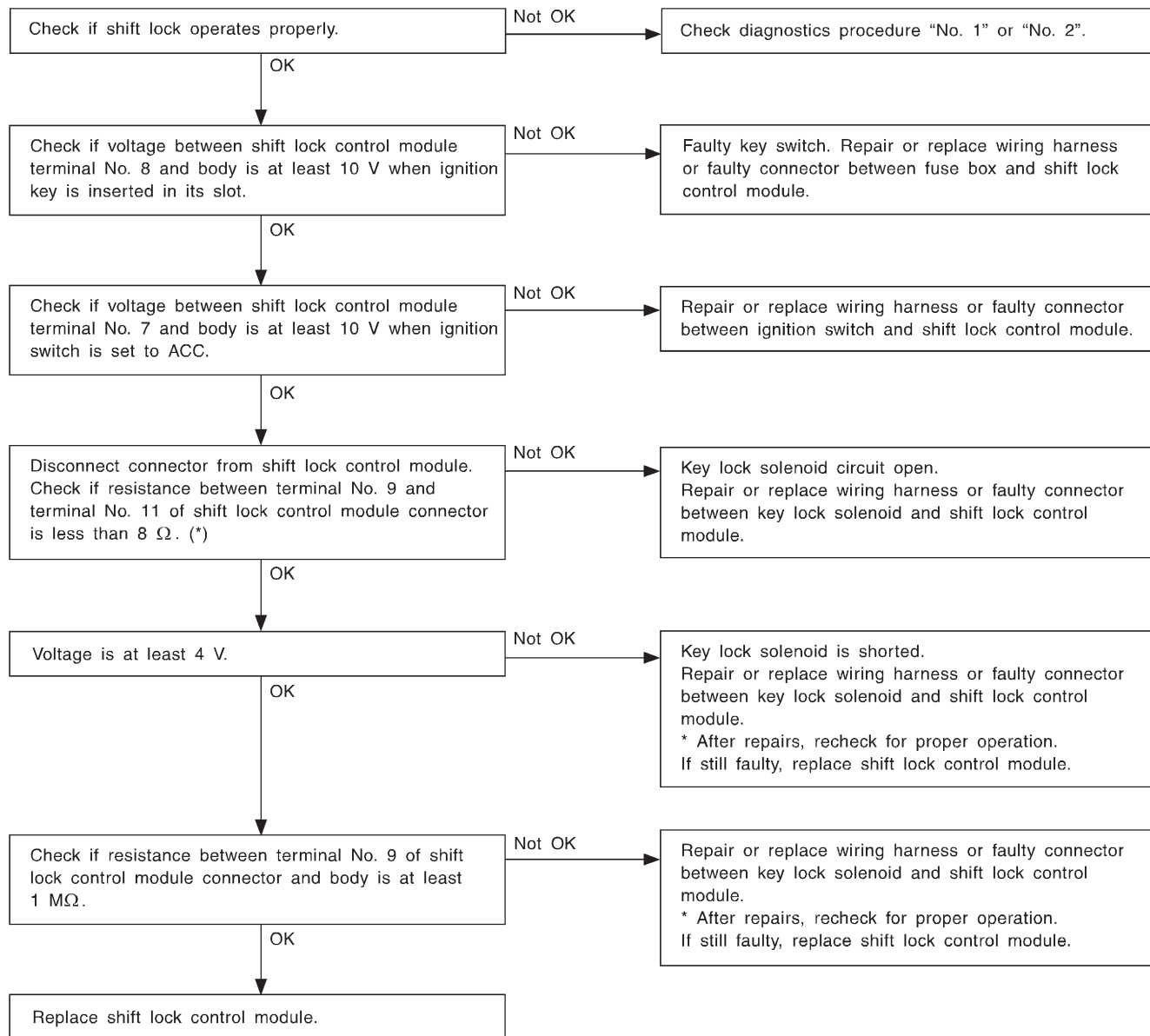


*: When conducting operational checks of the key lock solenoid, do not apply 12 V to solenoid for more than one second, since this may break solenoid circuit.

H6M0507

4. KEY INTERLOCK DOES NOT RELEASE

S501278A1004



*: When conducting operational checks of the key lock solenoid, do not apply 12 V to solenoid for more than one second, since this may break solenoid circuit.

H6M0508