

GENERAL DESCRIPTION

Control Systems

1. General Description

S501001

A: SPECIFICATIONS

S501001E49

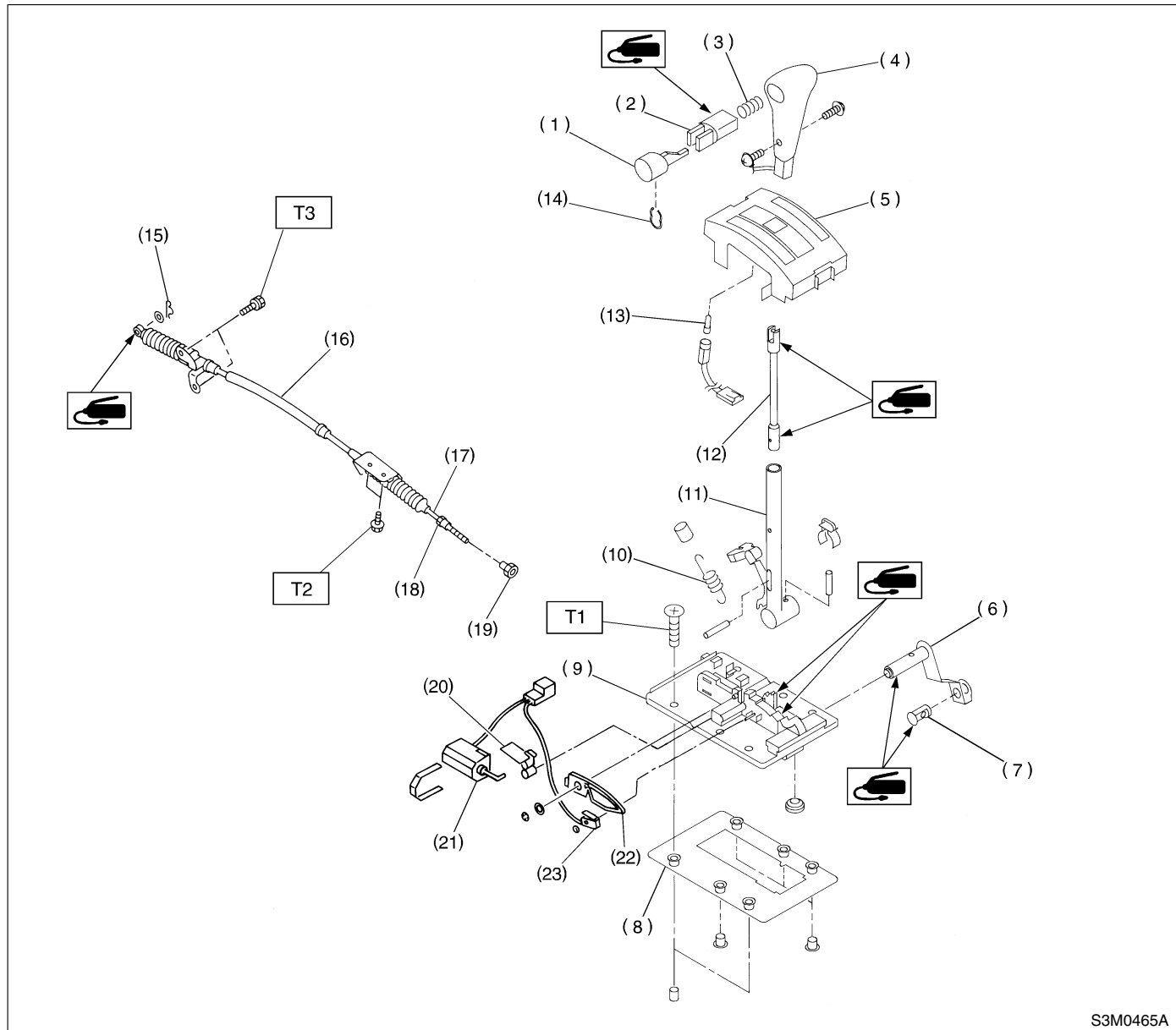
Item	Specification
Vibration torque of rod against lever	N·m (kgf-m, ft-lb) 0.74 (0.075, 0.54) or less

B: COMPONENT

S501001A05

1. AT SELECT LEVER

S501001A0501



S3M0465A

- | | | |
|--------------------------|---------------------------|--------------------------|
| (1) Button A | (11) Select lever (upper) | (21) Shift-lock solenoid |
| (2) Button B | (12) Rod | (22) Lock arm |
| (3) Spring (button) | (13) Indicator light bulb | (23) "P" position switch |
| (4) Grip | (14) Retainer spring | |
| (5) Indicator cover | (15) Snap pin | |
| (6) Select lever (lower) | (16) Outer cable | |
| (7) Pin | (17) Inner cable | |
| (8) Packing | (18) Nut (front) | |
| (9) Plate | (19) Nut (rear) | |
| (10) Detent spring | (20) Lock plate | |

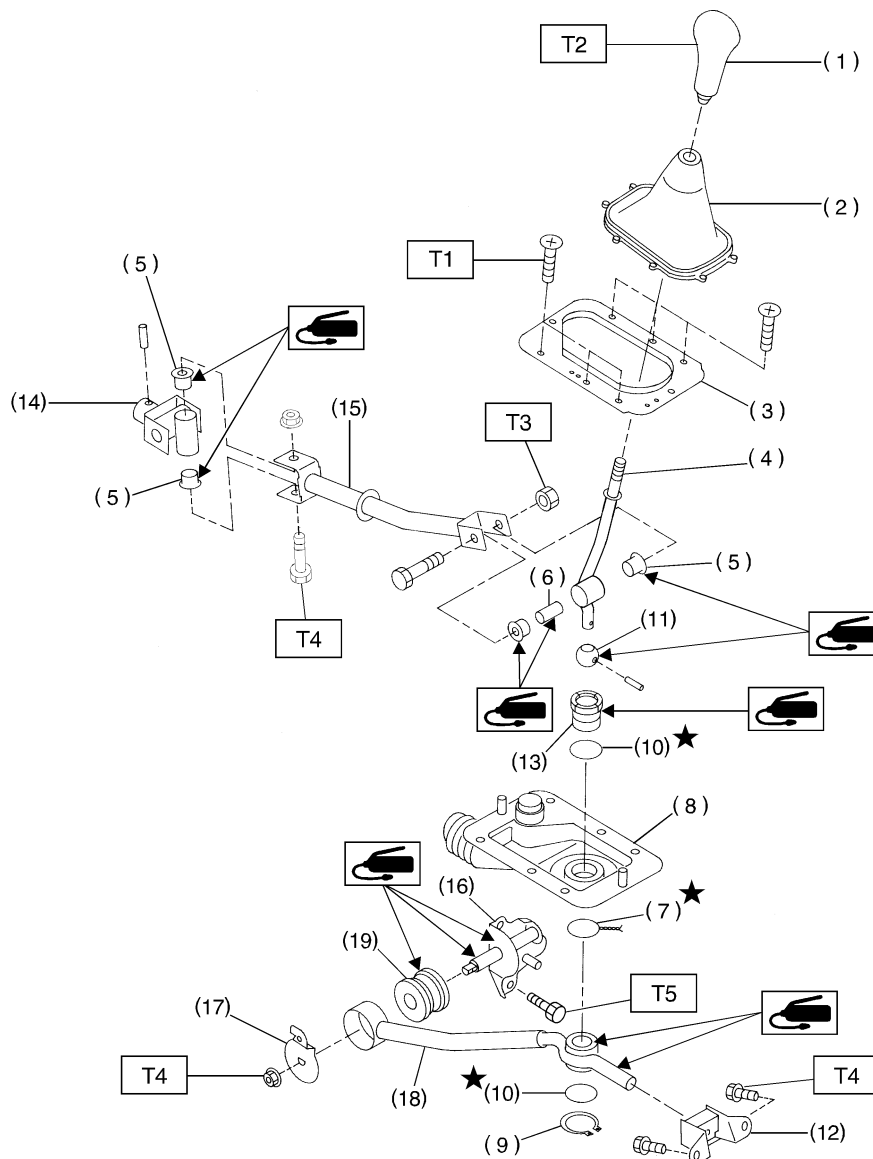
Tightening torque: N·m (kgf-m, ft-lb)

T1: 4.5 (0.46, 3.3)

T2: 18 (1.8, 13.0)

T3: 33 (3.4, 25)

2. MT GEAR SHIFT LEVER S501001A0502



H3M1968A

- (1) Gear shift knob
- (2) Console boot
- (3) Boot plate
- (4) Lever
- (5) Bush
- (6) Spacer
- (7) Locking wire
- (8) Boot
- (9) Snap ring

- (10) O-ring
- (11) Bush (Shift lever)
- (12) Cushion rubber
- (13) Bush (Stay rear)
- (14) Joint
- (15) Rod
- (16) Bracket
- (17) Washer
- (18) Stay

- (19) Bush (Stay front)

Tightening torque: N·m (kgf-m, ft-lb)

T1: 4.5 (0.46, 3.3)

T2: 5 (0.51, 3.7)

T3: 12 (1.2, 8.7)

T4: 18 (1.8, 13.0)

T5: 24.5 (2.50, 18.07)

GENERAL DESCRIPTION

Control Systems

C: CAUTION SS01001A03

- Wear working clothing, including a cap, protective goggles, and protective shoes during operation.
- Remove contamination including dirt and corrosion before removal, installation or disassembly.
- Keep the disassembled parts in order and protect them from dust or dirt.
- Before removal, installation or disassembly, be sure to clarify the failure. Avoid unnecessary removal, installation, disassembly, and replacement.
- Use SUBARU genuine grease etc. or the equivalent. Do not mix grease etc. with that of another grade or from other manufacturers.

- Be sure to tighten fasteners including bolts and nuts to the specified torque.
- Place shop jacks or safety stands at the specified points.
- Apply grease onto sliding or revolution surfaces before installation.
- Before installing O-rings or snap rings, apply sufficient amount of grease to avoid damage and deformation.
- Before securing a part on a vice, place cushioning material such as wood blocks, aluminum plate, or shop cloth between the part and the vice.
- Before disconnecting electrical connectors, be sure to disconnect negative terminal from battery.

D: PREPARATION TOOL SS01001A17

1. GENERAL TOOL SS01001A1701

TOOL NAME	REMARKS
Circuit Tester	Used for measuring resistance, voltage and ampere.