

GENERAL DESCRIPTION

Rear Suspension

1. General Description S201001

A: SPECIFICATIONS S201001E49

1. STABILIZER S201001E4901

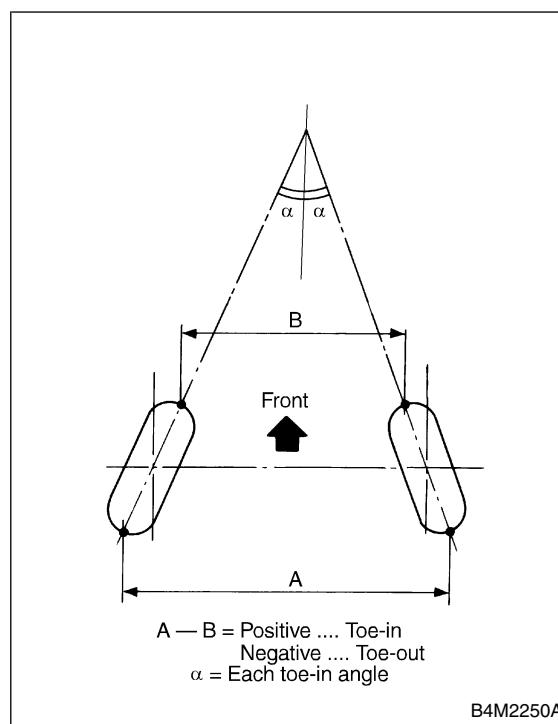
Model		Bar dia.
COUPE		13 mm (0.51 in)
SEDAN	2200 cc	13 mm (0.51 in)
	2500 cc	
WAGON		13 mm (0.51 in)
OUTBACK		13 mm (0.51 in)

2. WHEEL ALIGNMENT S201001E4902

	2200 cc			2500 cc	
	Sedan, Coupe	Wagon	OUTBACK	Coupe	Sedan
Camber (tolerance: $\pm 0^{\circ}45'$)	$-0^{\circ}55'$	$-0^{\circ}55'$	$-0^{\circ}55'$	$-1^{\circ}10'$	$-1^{\circ}10'$
Toe-in	0 ± 3 mm (0 ± 0.12 in) Each toe-in angle: $0^{\circ} \pm 18'$				
Wheel arch height [tolerance: $+12/-24$ mm ($+0.47/-0.94$ in)]	379 mm (14.92 in)	379 mm (14.92 in)	386 mm (15.20 in)	363 mm (14.29 in)	363 mm (14.29 in)
Thrust angle (tolerance: $0^{\circ} \pm 20'$)	0°	0°	0°	0°	0°

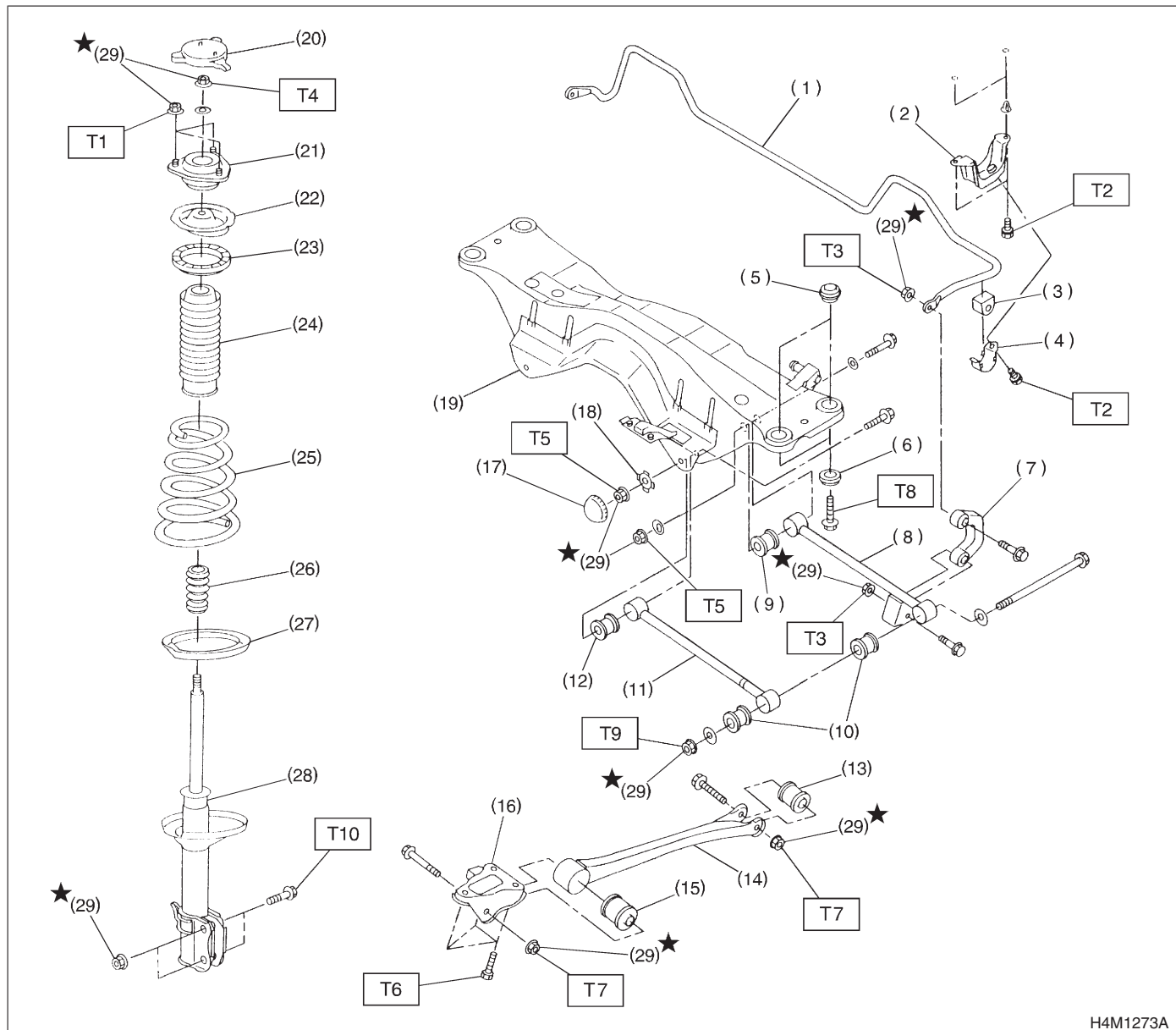
NOTE:

- Front and rear toe-ins and front camber can be adjusted. If toe-in or camber tolerance exceeds specifications, adjust toe-in and camber to the specification.
- The other items indicated in the specification table cannot be adjusted. If the other items exceeds specifications, check suspension parts and connections for deformities; and replace with new ones as required.



B: COMPONENT

S201001A05



H4M1273A

- (1) Stabilizer
- (2) Stabilizer bracket
- (3) Stabilizer bushing
- (4) Clamp
- (5) Floating bushing
- (6) Stopper
- (7) Stabilizer link
- (8) Rear lateral link
- (9) Bushing (C)
- (10) Bushing (A)
- (11) Front lateral link
- (12) Bushing (B)
- (13) Trailing link rear bushing
- (14) Trailing link

- (15) Trailing link front bushing
- (16) Trailing link bracket
- (17) Cap
- (18) Washer
- (19) Crossmember
- (20) Cap
- (21) Strut mount
- (22) Spring seat
- (23) Rubber seat upper
- (24) Dust cover
- (25) Coil spring
- (26) Helper
- (27) Rubber seat lower
- (28) Damper strut

- (29) Self-locking nut

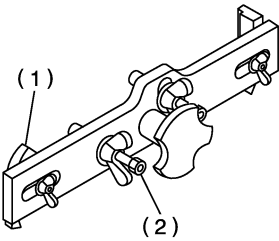
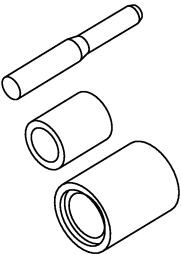
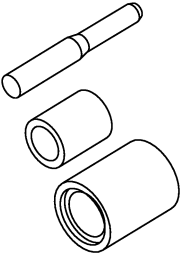
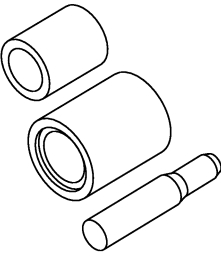
Tightening torque: N-m (kgf-m, ft-lb)

- T1: 20 (2.0, 14.5)**
- T2: 25 (2.5, 18.1)**
- T3: 44 (4.5, 32.5)**
- T4: 59 (6.0, 43)**
- T5: 98 (10.0, 72)**
- T6: 98 (10.0, 72)**
- T7: 113 (11.5, 83)**
- T8: 127 (13.0, 94)**
- T9: 137 (14.0, 101)**
- T10: 196 (20.0, 145)**

C: CAUTION S201001A03

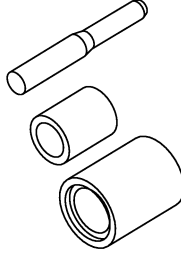
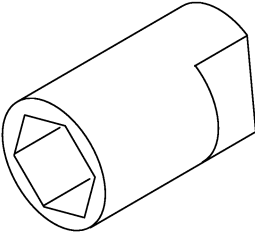
- Wear working clothing, including a cap, protective goggles, and protective shoes during operation.
- Remove contamination including dirt and corrosion before removal, installation or disassembly.
- Keep the disassembled parts in order and protect them from dust or dirt.
- Before removal, installation or disassembly, be sure to clarify the failure. Avoid unnecessary removal, installation, disassembly, and replacement.
- Use SUBARU genuine grease etc. or the equivalent. Do not mix grease etc. with that of another grade or from other manufacturers.
- Be sure to tighten fasteners including bolts and nuts to the specified torque.
- Place shop jacks or safety stands at the specified points.
- Apply grease onto sliding or revolution surfaces before installation.
- Before installing O-rings or snap rings, apply sufficient amount of grease to avoid damage and deformation.
- Before securing a part on a vice, place cushioning material such as wood blocks, aluminum plate, or shop cloth between the part and the vice.
- Before disposing shock absorbers, be sure to bleed gas completely. Also, do not throw away in fire.

D: PREPARATION TOOL S201001A17**1. SPECIAL TOOL** S201001A1703

ILLUSTRATION	TOOL NUMBER	DESCRIPTION	REMARKS
 <p>B4M2378A</p>	927380002	ADAPTER	Used as an adapter for camber & caster gauge when measuring camber and caster. (1) 28199AC000 PLATE (2) 28199AC010 BOLT
 <p>H5M0979</p>	927690000	INSTALLER & REMOVER	Used for replacing lateral link bushing (12 dia.).
 <p>H5M0979</p>	927700000	INSTALLER & REMOVER	Used for replacing lateral link bushing (14 dia.).
 <p>H5M0980</p>	927720000	INSTALLER & REMOVER	Used for replacing trailing link bushing.

GENERAL DESCRIPTION

Rear Suspension

ILLUSTRATION	TOOL NUMBER	DESCRIPTION	REMARKS
 <p style="text-align: right;">H5M0979</p>	927730000	INSTALLER & REMOVER	Used for replacing rear housing bushing.
 <p style="text-align: right;">B4M2384</p>	927760000	STRUT MOUNT SOCKET	Used for disassembling and assembling strut mount.

2. GENERAL TOOL S201001A1704

TOOL NAME	REMARKS
Alignment Gauge	Used for wheel alignment measurement.
Turning Radius Gauge	Used for wheel alignment measurement.
Toe-in Gauge	Used for toe-in measurement.
Transmission Jack	Used for suspension assembly/disassembly.
Bearing Puller	Used for removing bushings.