

# GENERAL DESCRIPTION

## Front Suspension

### 1. General Description S202001

#### A: SPECIFICATIONS S202001E49

##### 1. STABILIZER S202001E4901

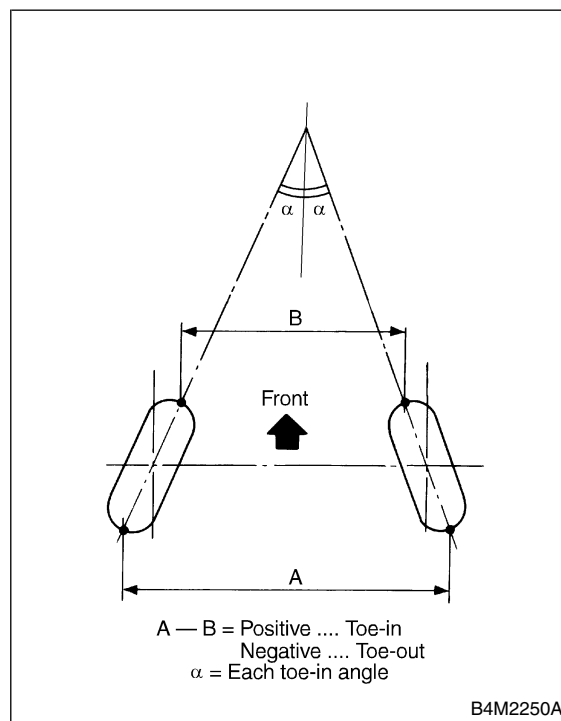
Model		Bar dia.
COUPE		19 mm (0.75 in)
SEDAN	2200 cc	18 mm (0.71 in)
	2500 cc	19 mm (0.75 in)
WAGON		19 mm (0.75 in)
OUTBACK		19 mm (0.75 in)

##### 2. WHEEL ALIGNMENT S202001E4902

	2200 cc			2500 cc	
	Sedan, Coupe	Wagon	OUTBACK	Coupe	Sedan
Camber (tolerance: $\pm 0^{\circ}30'$ )	0°	0°	0°	-0°25'	-0°25'
Caster (common difference: $\pm 1^{\circ}$ )	3°	3°	3°	3°05'	3°05'
Toe-in	$0 \pm 3$ mm ( $0 \pm 0.12$ in) Each toe-in angle: -0°09' [when toe-in is -3 mm (-0.12 in)] Each toe-out angle: 0°09' [when toe-out is 3 mm (0.12 in)]				
Kingpin angle	14°	14°	14°	14°	14°
Wheel arch height [tolerance: $+12/-24$ mm ( $+0.47/-0.94$ in)]	391 mm (15.39 in)	391 mm (15.39 in)	394 mm (15.51 in)	371 mm (14.61 in)	371 mm (14.61 in)

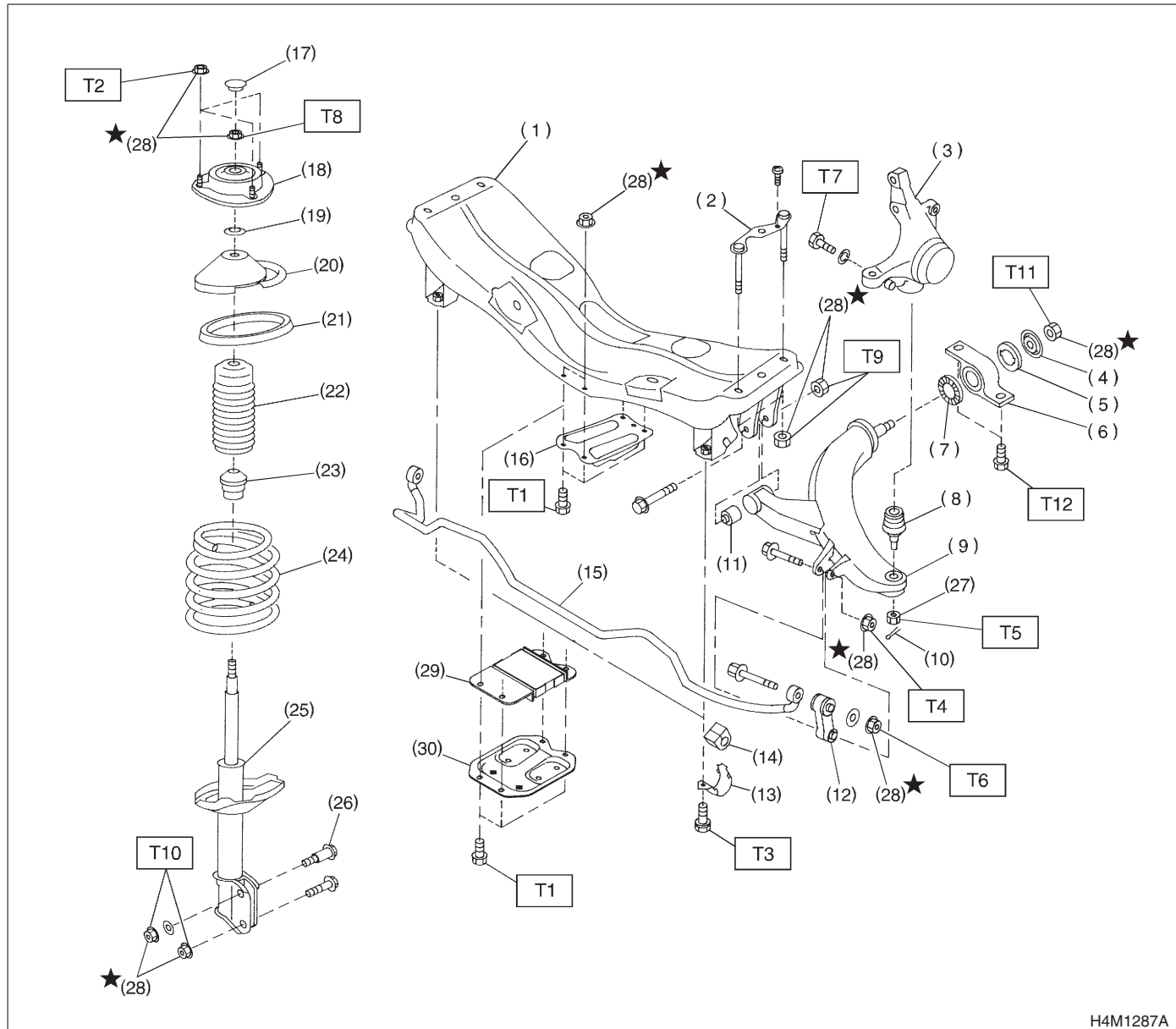
#### NOTE:

- Front and rear toe-ins and front camber can be adjusted. If toe-in or camber tolerance exceeds specifications, adjust toe-in and camber to the specification.
- The other items indicated in the specification table cannot be adjusted. If the other items exceeds specifications, check suspension parts and connections for deformities; and replace with new ones as required.



### B: COMPONENT

S202001A05



H4M1287A

- |  |  |
|--|--|
| (1) Crossmember                              | (17) Dust seal                         |
| (2) Bolt ASSY                                | (18) Strut mount                       |
| (3) Housing                                  | (19) Spacer                            |
| (4) Washer                                   | (20) Upper spring seat                 |
| (5) Stop rubber (Rear)                       | (21) Rubber seat                       |
| (6) Rear bushing                             | (22) Dust cover                        |
| (7) Stop rubber (Front)                      | (23) Helper                            |
| (8) Ball joint                               | (24) Coil spring                       |
| (9) Transverse link                          | (25) Damper strut                      |
| (10) Cotter pin                              | (26) Adjusting bolt                    |
| (11) Front bushing                           | (27) Castle nut                        |
| (12) Stabilizer link                         | (28) Self-locking nut                  |
| (13) Clamp                                   | (29) Dynamic damper (2500 cc MT model) |
| (14) Bushing                                 | (30) Jack-up plate (2500 cc MT model)  |
| (15) Stabilizer                              |  |
| (16) Jack-up plate (Except 2500 cc MT model) |  |

#### Tightening torque: N·m (kgf-m, ft-lb)

- |                             |
|-----------------------------|
| <b>T1: 18 (1.8, 13.0)</b>   |
| <b>T2: 20 (2.0, 14.5)</b>   |
| <b>T3: 25 (2.5, 18.1)</b>   |
| <b>T4: 29 (3.0, 21.7)</b>   |
| <b>T5: 39 (4, 29)</b>       |
| <b>T6: 44 (4.5, 32.5)</b>   |
| <b>T7: 49 (5.0, 36)</b>     |
| <b>T8: 54 (5.5, 39.8)</b>   |
| <b>T9: 98 (10.0, 72)</b>    |
| <b>T10: 152 (15.5, 112)</b> |
| <b>T11: 186 (19.0, 137)</b> |
| <b>T12: 245 (25.0, 181)</b> |

### **C: CAUTION** S202001A03

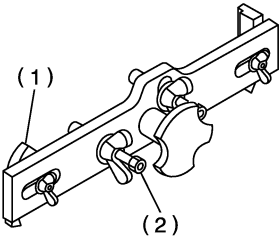
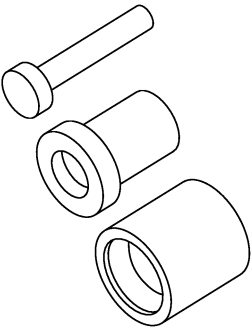
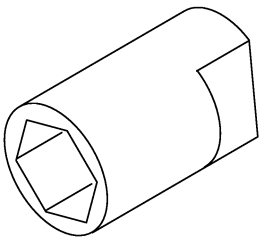
- Wear working clothing, including a cap, protective goggles, and protective shoes during operation.
- Remove contamination including dirt and corrosion before removal, installation or disassembly.
- Keep the disassembled parts in order and protect them from dust or dirt.
- Before removal, installation or disassembly, be sure to clarify the failure. Avoid unnecessary removal, installation, disassembly, and replacement.
- Use SUBARU genuine grease etc. or the equivalent. Do not mix grease etc. with that of another grade or from other manufacturers.
- Be sure to tighten fasteners including bolts and nuts to the specified torque.
- Place shop jacks or safety stands at the specified points.
- Apply grease onto sliding or revolution surfaces before installation.
- Before installing O-rings or snap rings, apply sufficient amount of grease to avoid damage and deformation.
- Before securing a part on a vice, place cushioning material such as wood blocks, aluminum plate, or shop cloth between the part and the vice.

# GENERAL DESCRIPTION

Front Suspension

## D: PREPARATION TOOL S202001A17

### 1. SPECIAL TOOL S202001A1703

ILLUSTRATION	TOOL NUMBER	DESCRIPTION	REMARKS
 <p>B4M2378A</p>	927380002	ADAPTER	Used as an adapter for camber & caster gauge when measuring camber and caster. (1) 28199AC000 PLATE (2) 28199AC010 BOLT
 <p>B4M2385</p>	927680000	INSTALLER & REMOVER	Used for replacing transverse link bushing.
 <p>B4M2384</p>	927760000	STRUT MOUNT SOCKET	Used for disassembling and assembling strut mount.

### 2. GENERAL TOOL S202001A1704

TOOL NAME	REMARKS
Alignment Gauge	Used for wheel alignment measurement.
Turning Radius Gauge	Used for wheel alignment measurement.
Toe-in Gauge	Used for toe-in measurement.
Dial Gauge	Used for damper strut measurement.