

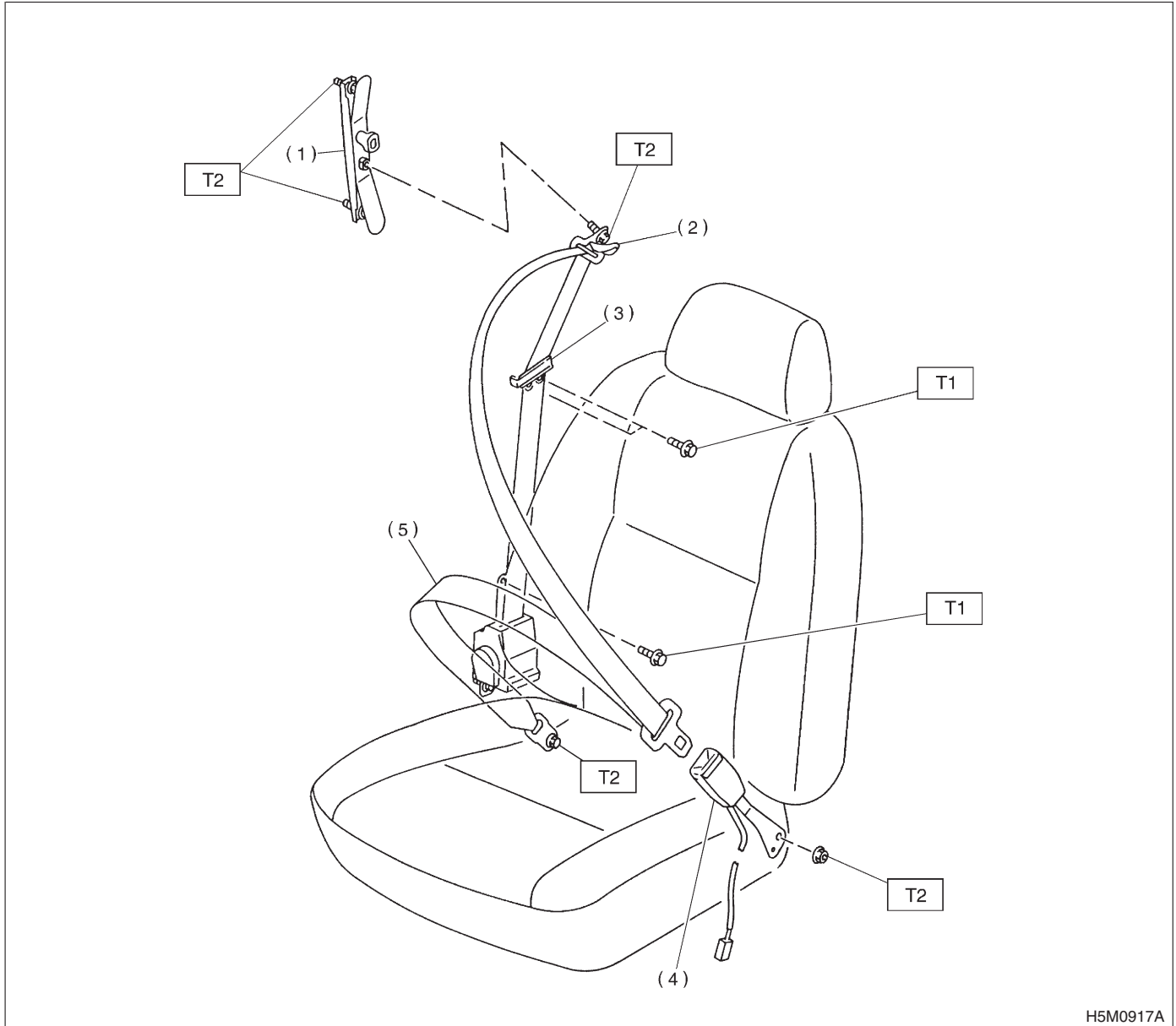
GENERAL DESCRIPTION

Seat Belt System

1. General Description S801001

A: COMPONENT S801001A05

1. FRONT SEAT BELT S801001A0501



(1) Adjuster anchor ASSY

(2) Through cover

(3) Webbing guide

(4) Inner belt ASSY

(5) Outer belt ASSY

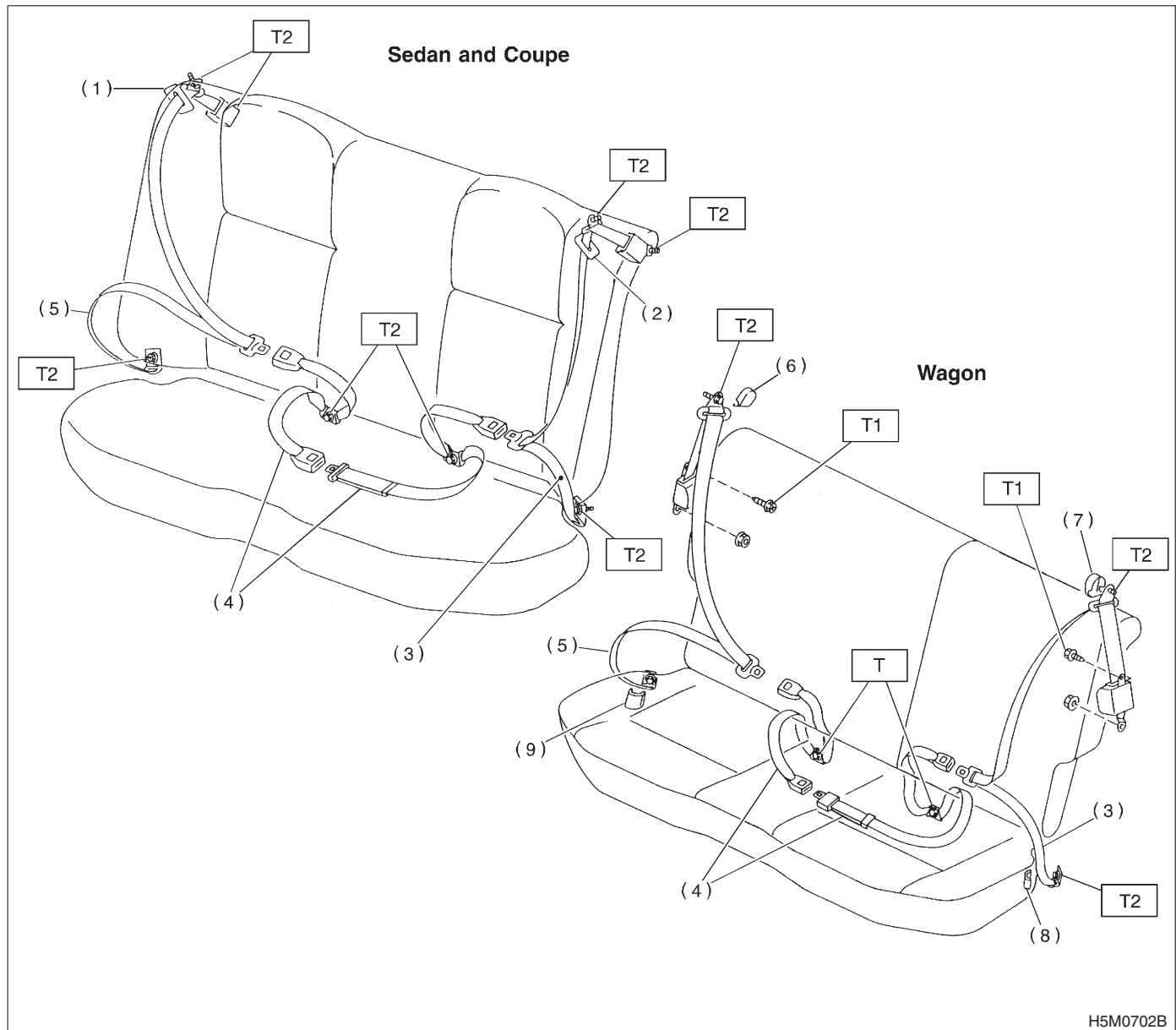
Tightening torque: N·m (kgf-m, ft-lb)

T1: 13 (1.3, 9.4)

T2: 35 (3.6, 26)

2. REAR SEAT BELT

S801001A0504



- (1) Webbing cover (RH)
- (2) Webbing cover (LH)
- (3) Outer seat belt (LH)
- (4) Center seat belt
- (5) Outer seat belt (RH)

- (6) Through cap (RH)
- (7) Through cap (LH)
- (8) Lap anchor cover (LH)
- (9) Lap anchor cover (RH)

Tightening torque: N·m (kgf-m, ft-lb)

T1: 13 (1.3, 9.4)

T2: 35 (3.6, 26)

GENERAL DESCRIPTION

Seat Belt System

B: CAUTION S801001A03

If the material gets in your eyes or on your skin during deployment, wash it away with clean water, and then consult a doctor.