

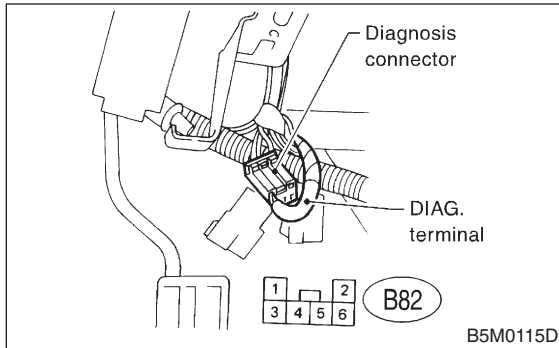
## 6. Read Diagnostics Trouble Code

S002628

### A: OPERATION

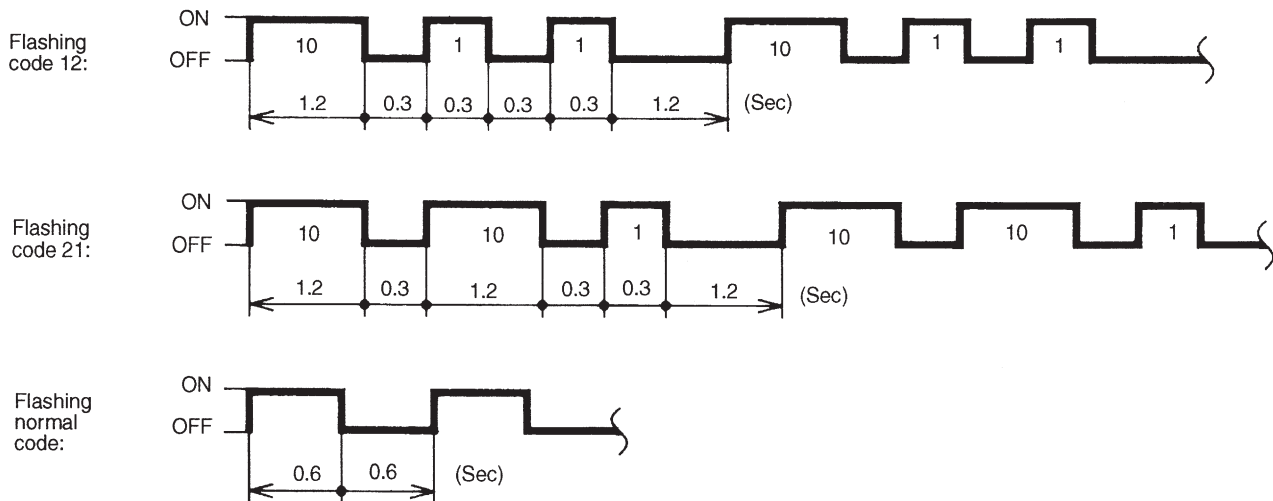
S002628A16

- 1) Turn the ignition switch ON.
- 2) Connect the diagnosis terminal to diagnosis connector terminal No. 1 in the driver's seat lower cover area.



- 3) Read trouble code by identifying the way the air bag warning light flashes.  
The airbag warning light flashes a code corresponding to the faulty parts.  
The long segment (1.2 sec on) indicates a "ten", and the short segment (0.3 sec on) indicates a "one".

Example:



B5M0117A

- 4) Turn the ignition switch OFF, and disconnect the diagnosis terminal from the diagnosis connector terminal No 1. Wind tape around the diagnosis terminal and return it to its original position.