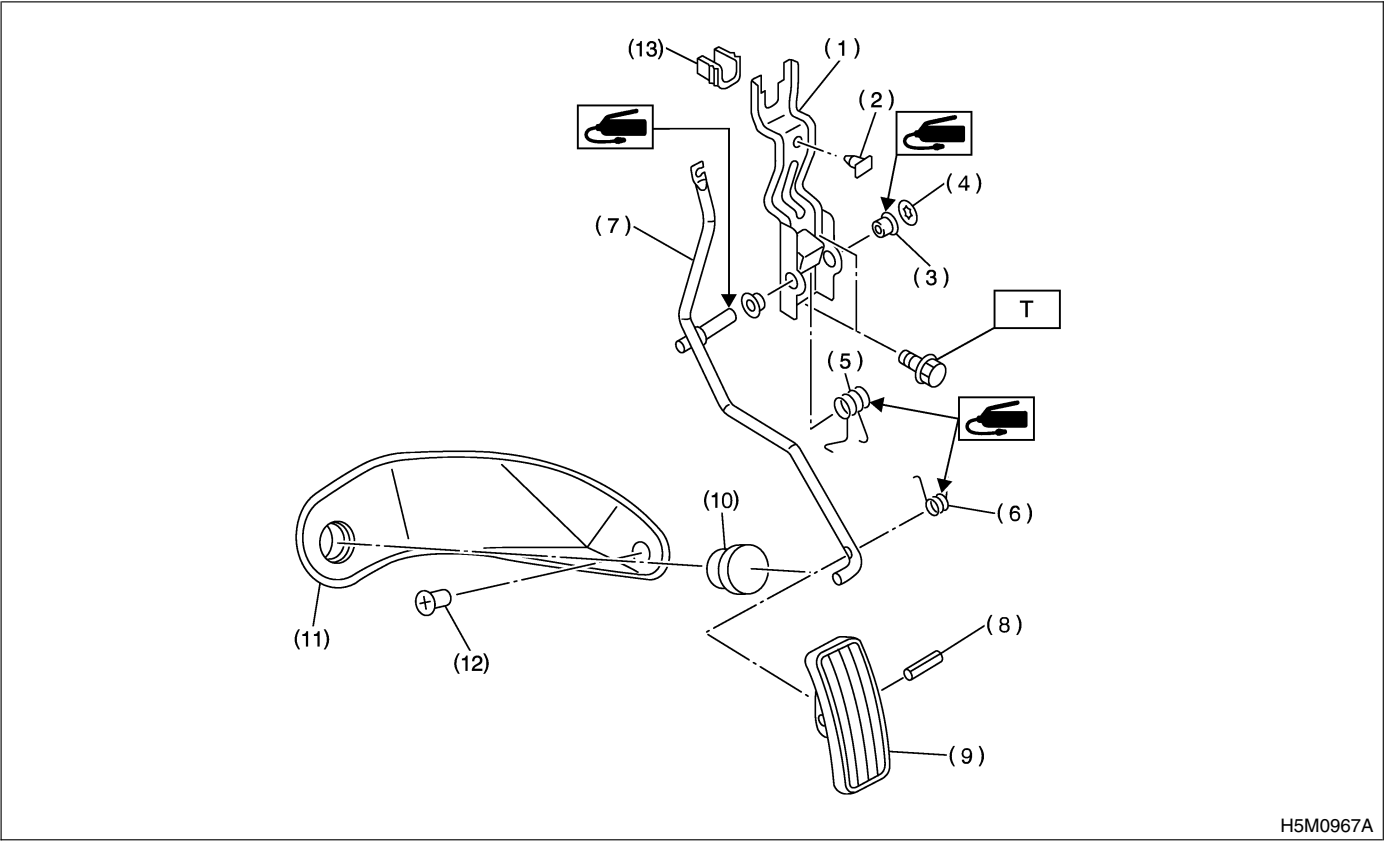


1. General Description S107001

A: SPECIFICATIONS S107001E49

Accelerator pedal	Free play	At pedal pad	1 — 4 mm (0.04 — 0.16 in)
	Stroke	At pedal pad	50 — 55 mm (1.97 — 2.17 in)

B: COMPONENT S107001A05



H5M0967A

- | | |
|------------------------------|-----------------------------|
| (1) Accelerator bracket | (7) Accelerator pedal lever |
| (2) Stopper | (8) Spring pin |
| (3) Bushing | (9) Accelerator pedal |
| (4) Clip | (10) Accelerator stopper |
| (5) Accelerator spring | (11) Accelerator plate |
| (6) Accelerator pedal spring | (12) Clip |

(13) Holder

Tightening torque: N·m (kgf-m, ft-lb)
T: 18 (1.8, 13.0)

C: CAUTION S107001A03

- Wear work clothing, including a cap, protective goggles, and protective shoes during operation.
- Remove contamination, including dirt and corrosion, before removal, installation or disassembly.
- Keep the disassembled parts in order and protect them from dust and dirt.
- Before removal, installation or disassembly, be sure to clarify the failure. Avoid unnecessary removal, installation, disassembly, and replacement.
- Be careful not to burn your hands, because each part in the vehicle is hot after running.

- Be sure to tighten fasteners including bolts and nuts to the specified torque.
- Place shop jacks or safety stands at the specified points.
- Before disconnecting electrical connectors of sensors or units, be sure to disconnect negative terminal from battery.