

1. General Description

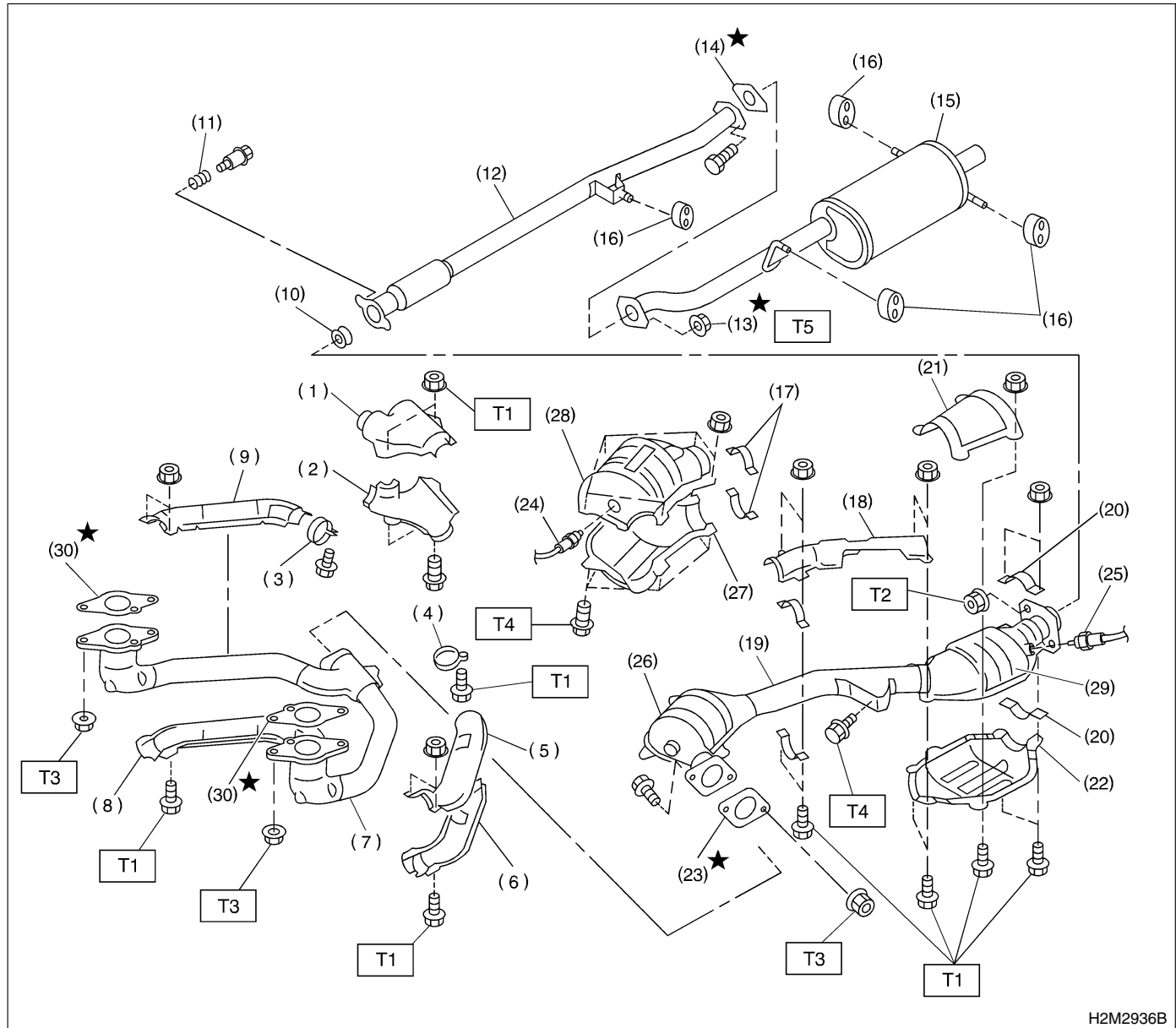
S102001

A: COMPONENT

S102001A05

1. 2200 cc MODEL

S102001A0501



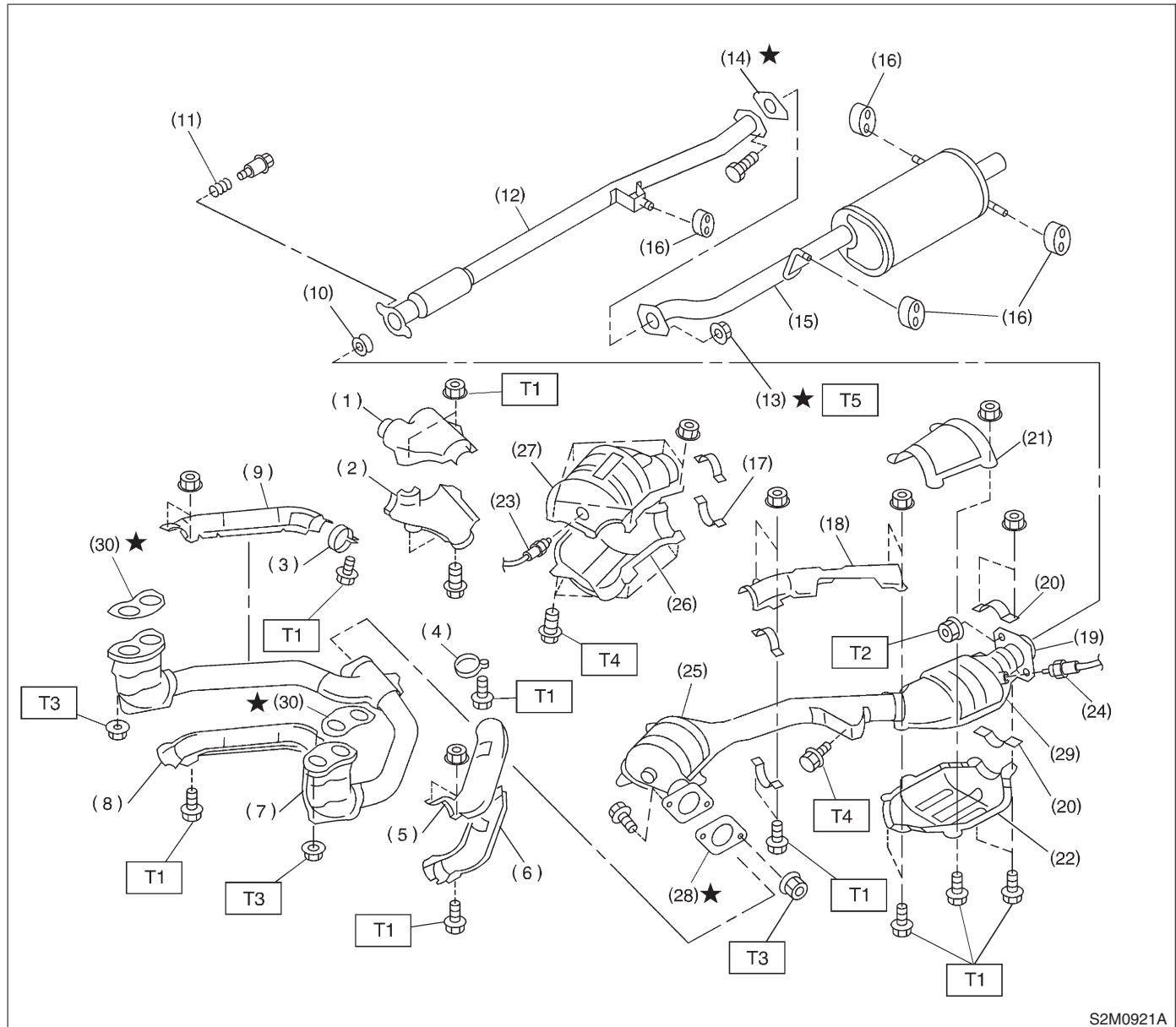
Exhaust

- Tightening torque: N·m (kgf·m, ft·lb)**
- | | |
|------------|-----------------------|
| T1: | 13 (1.3, 9.4) |
| T2: | 18 (1.8, 13.0) |
| T3: | 30 (3.1, 22.4) |
| T4: | 35 (3.6, 26.0) |
| T5: | 48 (4.9, 35.4) |

GENERAL DESCRIPTION

Exhaust

2. 2500 cc MODEL S102001A0502



S2M0921A

- | | | |
|----------------------------------------|-------------------------------------------|--------------------------------------------|
| (1) Upper front exhaust pipe cover CTR | (11) Spring | (25) Front catalytic converter |
| (2) Lower front exhaust pipe cover CTR | (12) Rear exhaust pipe | (26) Lower front catalytic converter cover |
| (3) Band RH | (13) Self-locking nut | (27) Upper front catalytic converter cover |
| (4) Band LH | (14) Gasket | (28) Gasket |
| (5) Upper front exhaust pipe cover LH | (15) Muffler | (29) Rear catalytic converter |
| (6) Lower front exhaust pipe cover LH | (16) Cushion rubber | (30) Gasket |
| (7) Front exhaust pipe | (17) Clamp | |
| (8) Lower front exhaust pipe cover RH | (18) Upper center exhaust pipe cover | |
| (9) Upper front exhaust pipe cover RH | (19) Center exhaust pipe | |
| (10) Gasket | (20) Clamp B | |
| | (21) Upper rear catalytic converter cover | |
| | (22) Lower rear catalytic converter cover | |
| | (23) Front oxygen (A/F) sensor | |
| | (24) Rear oxygen sensor | |

Tightening torque: N·m (kgf-m, ft-lb)

T1: 13 (1.3, 9.4)

T2: 18 (1.8, 13.0)

T3: 30 (3.1, 22.4)

T4: 35 (3.6, 26.0)

T5: 48 (4.9, 35.4)

B: CAUTION S102001A03

- Wear working clothing, including a cap, protective goggles, and protective shoes during operation.
- Remove contamination including dirt and corrosion before removal, installation or disassembly.
- Keep the disassembled parts in order and protect them from dust or dirt.
- Before removal, installation or disassembly, be sure to clarify the failure. Avoid unnecessary removal, installation, disassembly, and replacement.
- Be careful not to burn your hands, because each part on the vehicle is hot after running.
- Be sure to tighten fasteners including bolts and nuts to the specified torque.
- Place shop jacks or safety stands at the specified points.
- Before disconnecting electrical connectors of sensors or units, be sure to disconnect negative terminal from battery.