

GENERAL DESCRIPTION

Parking Brake

1. General Description S404001

A: SPECIFICATIONS S404001E49

1. 2200 cc MODEL S404001E4901

Type	Mechanical on rear brake drums
Effective drum diameter	228.6 mm (9 in)
Lining dimensions (length × width × thickness)	218.8 × 35.0 × 4.1 mm (8.61 × 1.378 × 0.161 in)
Clearance adjustment	Automatic adjustment
Lever stroke	7 to 8 notches/196 N (20 kgf, 44 lb)

2. 2500 cc MODEL S404001E4902

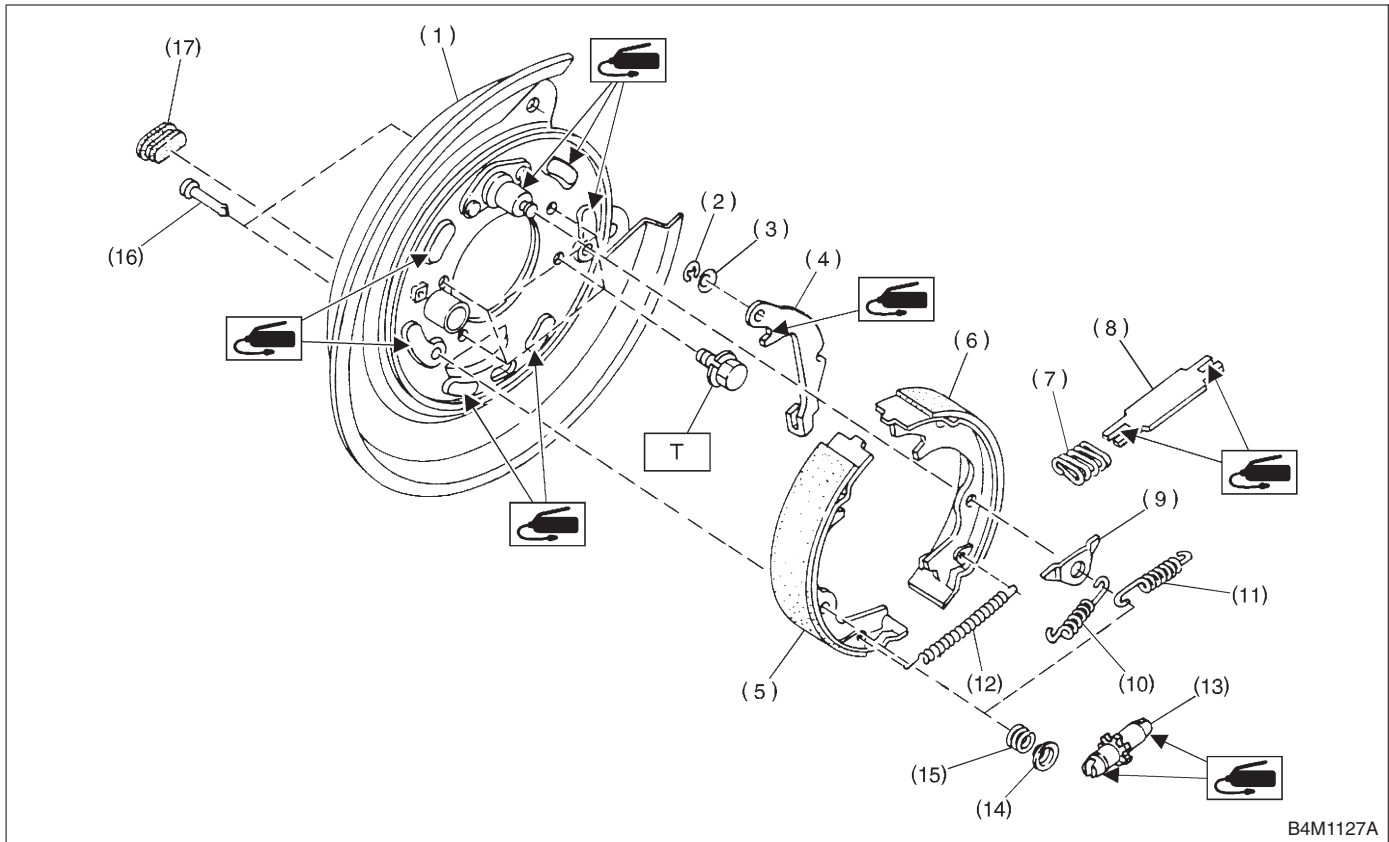
Type	Mechanical on rear brakes, drum in disc
Effective drum diameter	170 mm (6.69 in)
Lining dimensions (length × width × thickness)	162.6 × 30.0 × 3.2 mm (6.40 × 1.181 × 0.126 in)
Clearance adjustment	Manual adjustment
Lever stroke	7 to 8 notches/196 N (20 kgf, 44 lb)

B: COMPONENT

S404001A05

1. PARKING BRAKE

S404001A0503



- | | | |
|------------------------------------|------------------------------|----------------------------|
| (1) Back plate | (8) Strut | (15) Shoe hold down spring |
| (2) Retainer | (9) Shoe guide plate | (16) Shoe hold down pin |
| (3) Spring washer | (10) Primary return spring | (17) Adjusting hole cover |
| (4) Lever | (11) Secondary return spring | |
| (5) Parking brake shoe (Primary) | (12) Adjusting spring | |
| (6) Parking brake shoe (Secondary) | (13) Adjuster | |
| (7) Strut spring | (14) Shoe hold-down cup | |

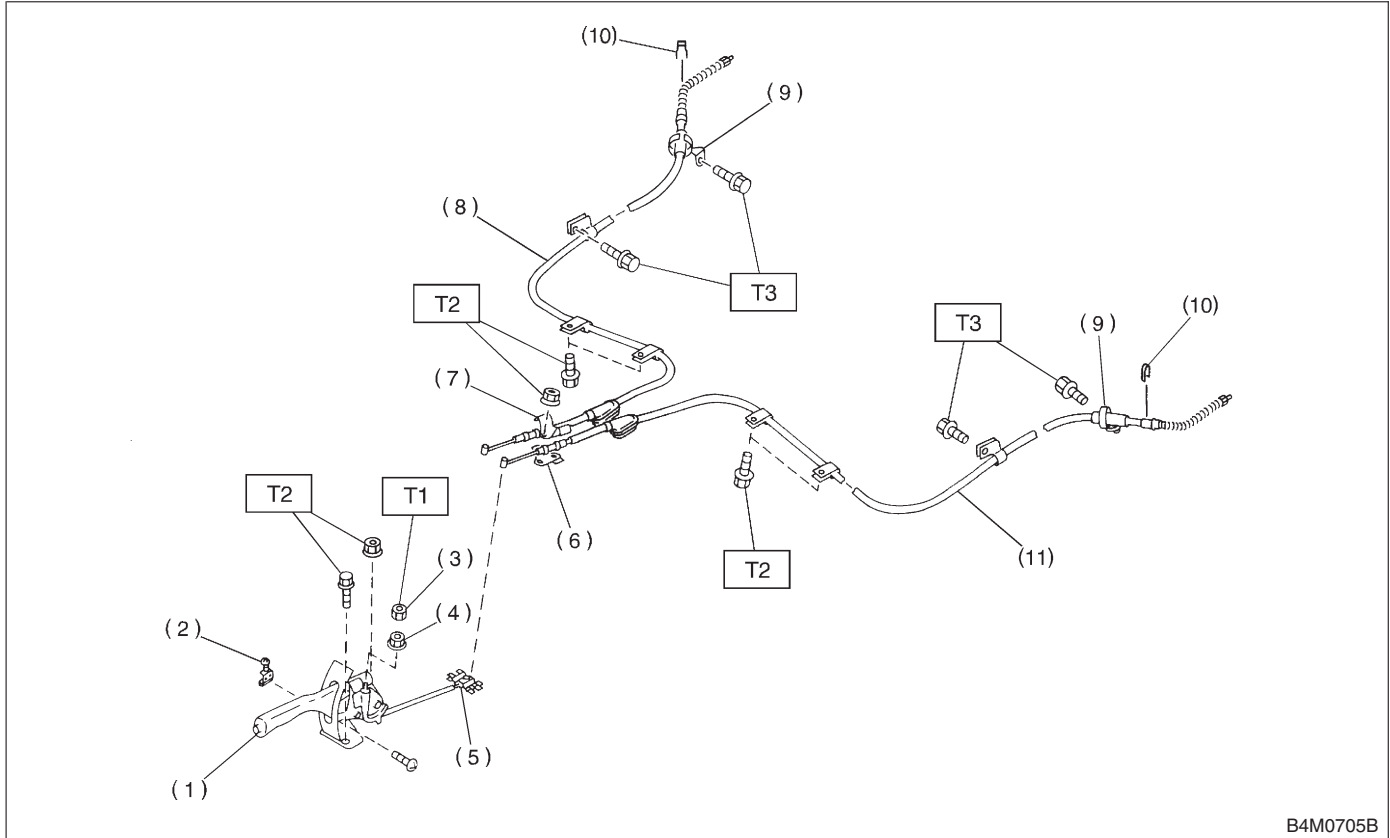
Tightening torque: N·m (kgf-m, ft-lb)

T: 52 (5.3, 38.3)

GENERAL DESCRIPTION

Parking Brake

2. PARKING BRAKE CABLE S404001A0502



- | | |
|--------------------------|---|
| (1) Parking brake lever | (7) Clamp |
| (2) Parking brake switch | (8) Parking brake cable RH |
| (3) Lock nut | (9) Cable guide |
| (4) Adjusting nut | (10) Clamp (Rear disc brake model only) |
| (5) Equalizer | (11) Parking brake cable LH |
| (6) Bracket | |

Tightening torque: N·m (kgf-m, ft-lb)

T1: 5.9 (0.60, 4.3)

T2: 18 (1.8, 13.0)

T3: 32 (3.3, 24)

C: CAUTION S404001A03

- Wear working clothing, including a cap, protective goggles, and protective shoes during operation.
- Remove contamination including dirt and corrosion before removal, installation or disassembly.
- Keep the disassembled parts in order and protect them from dust or dirt.
- Before removal, installation or disassembly, be sure to clarify the failure. Avoid unnecessary removal, installation, disassembly, and replacement.
- Be careful not to burn your hands, because each part on the vehicle is hot after running.
- Use SUBARU genuine grease etc. or the equivalent. Do not mix grease etc. with that of another grade or from other manufacturers.
- Be sure to tighten fasteners including bolts and nuts to the specified torque.
- Place shop jacks or safety stands at the specified points.
- Apply grease onto sliding or revolution surfaces before installation.
- Before installing O-rings or snap rings, apply sufficient amount of grease to avoid damage and deformation.
- Before securing a part on a vice, place cushioning material such as wood blocks, aluminum plate, or shop cloth between the part and the vice.
- Keep grease etc. away from parking brake shoes.