

13. Diagnostics Chart with Diagnosis Connector S006522

A: ABS WARNING LIGHT DOES NOT COME ON. S006522E24

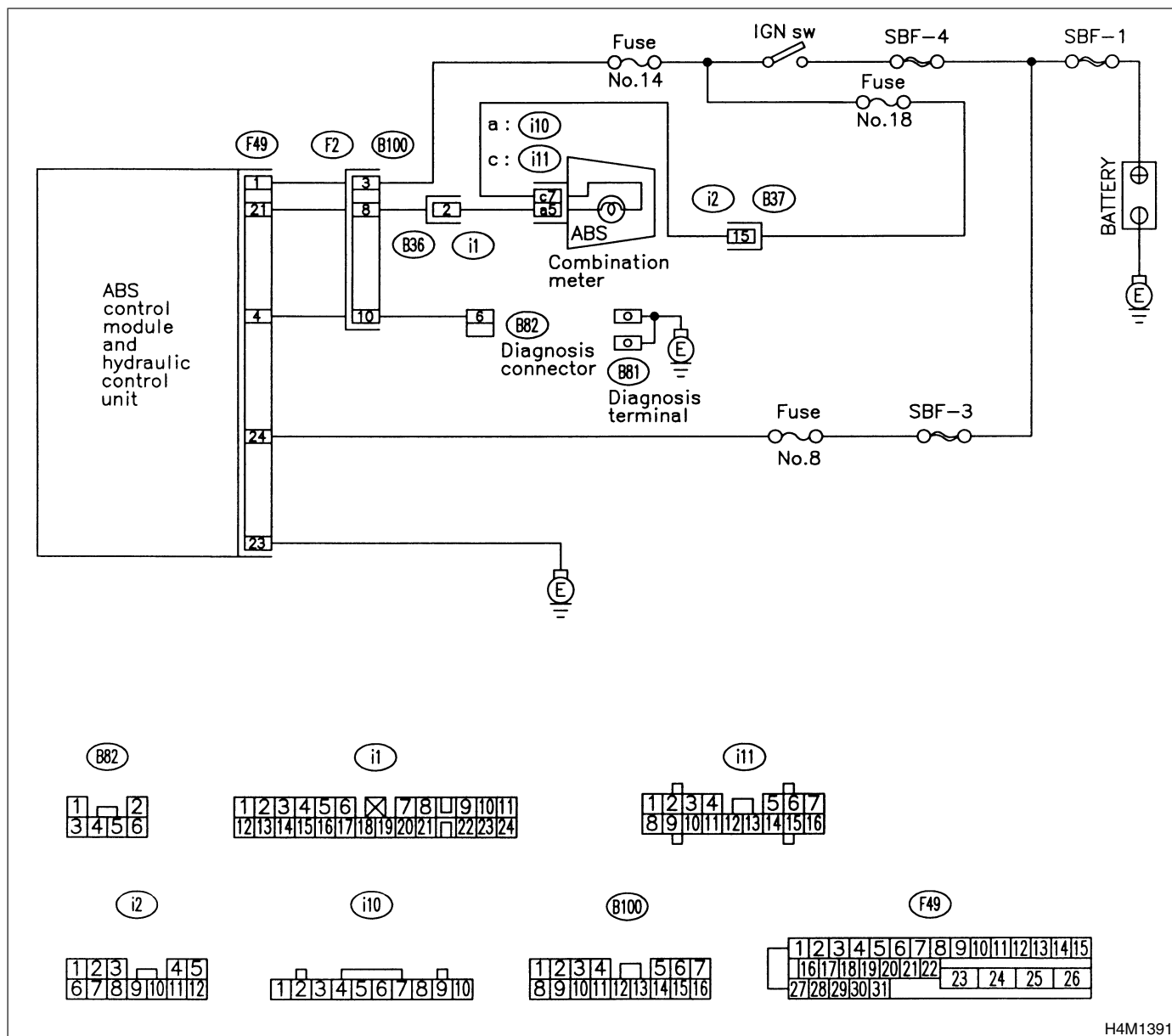
DIAGNOSIS:

- ABS warning light circuit is open or shorted.

TROUBLE SYMPTOM:

- When ignition switch is turned ON (engine OFF), ABS warning light does not come on.

WIRING DIAGRAM:



H4M1391

DIAGNOSTICS CHART WITH DIAGNOSIS CONNECTOR

ABS

No.	Step	Check	Yes	No
1	CHECK IF OTHER WARNING LIGHTS TURN ON. Turn ignition switch to ON (engine OFF).	Do other warning lights turn on?	Go to step 2.	Repair combination meter.
2	CHECK ABS WARNING LIGHT BULB. 1) Turn ignition switch to OFF. 2) Remove combination meter. 3) Remove ABS warning light bulb from combination meter.	Is ABS warning light bulb OK?	Go to step 3.	Replace ABS warning light bulb.
3	CHECK BATTERY SHORT OF ABS WARNING LIGHT HARNESS. 1) Disconnect connector (B100) from connector (F2). 2) Measure voltage between connector (B100) and chassis ground. Connector & terminal (B100) No. 8 (+) — Chassis ground (-):	Is the voltage less than 3 V?	Go to step 4.	Repair warning light harness.
4	CHECK BATTERY SHORT OF ABS WARNING LIGHT HARNESS. 1) Turn ignition switch to ON. 2) Measure voltage between connector (B100) and chassis ground. Connector & terminal (B100) No. 8 (+) — Chassis ground (-):	Is voltage less than 3 V?	Go to step 5.	Repair warning light harness.
5	CHECK WIRING HARNESS. 1) Turn ignition switch to OFF. 2) Install ABS warning light bulb to combination meter. 3) Install combination meter. 4) Turn ignition switch to ON. 5) Measure voltage between connector (B100) and chassis ground. Connector & terminal (B100) No. 8 (+) — Chassis ground (-):	Is voltage between 10 V and 15 V?	Go to step 6.	Repair wiring harness.
6	CHECK BATTERY SHORT OF ABS WARNING LIGHT HARNESS. 1) Turn ignition switch to OFF. 2) Measure voltage between connector (F2) and chassis ground. Connector & terminal (F2) No. 8 (+) — Chassis ground (-):	Is the voltage less than 3 V?	Go to step 7.	Repair wiring harness.
7	CHECK BATTERY SHORT OF ABS WARNING LIGHT HARNESS. 1) Turn ignition switch to ON. 2) Measure voltage between connector (F2) and chassis ground. Connector & terminal (F2) No. 8 (+) — Chassis ground (-):	Is voltage less than 3 V?	Go to step 8.	Repair wiring harness.
8	CHECK GROUND CIRCUIT OF ABSCM&H/U. Measure resistance between ABSCM&H/U and chassis ground. Connector & terminal (F49) No. 23 — Chassis ground:	Is the resistance less than 0.5 Ω ?	Go to step 9.	Repair ABSCM&H/U ground harness.
9	CHECK WIRING HARNESS. Measure resistance between connector (F2) and chassis ground. Connector & terminal (F2) No. 8 — Chassis ground:	Is the resistance less than 0.5 Ω ?	Go to step 10.	Repair harness/connector.

DIAGNOSTICS CHART WITH DIAGNOSIS CONNECTOR

ABS

No.	Step	Check	Yes	No
10	CHECK POOR CONTACT IN CONNECTORS. Turn ignition switch to OFF.	Is there poor contact in connectors between combination meter and ABSCM&H/U? <Ref. to EN-6 CAUTION, General Description.>	Repair connector.	Replace ABSCM&H/U.

MEMO:

DIAGNOSTICS CHART WITH DIAGNOSIS CONNECTOR

ABS

B: ABS WARNING LIGHT DOES NOT GO OFF. S006522E25

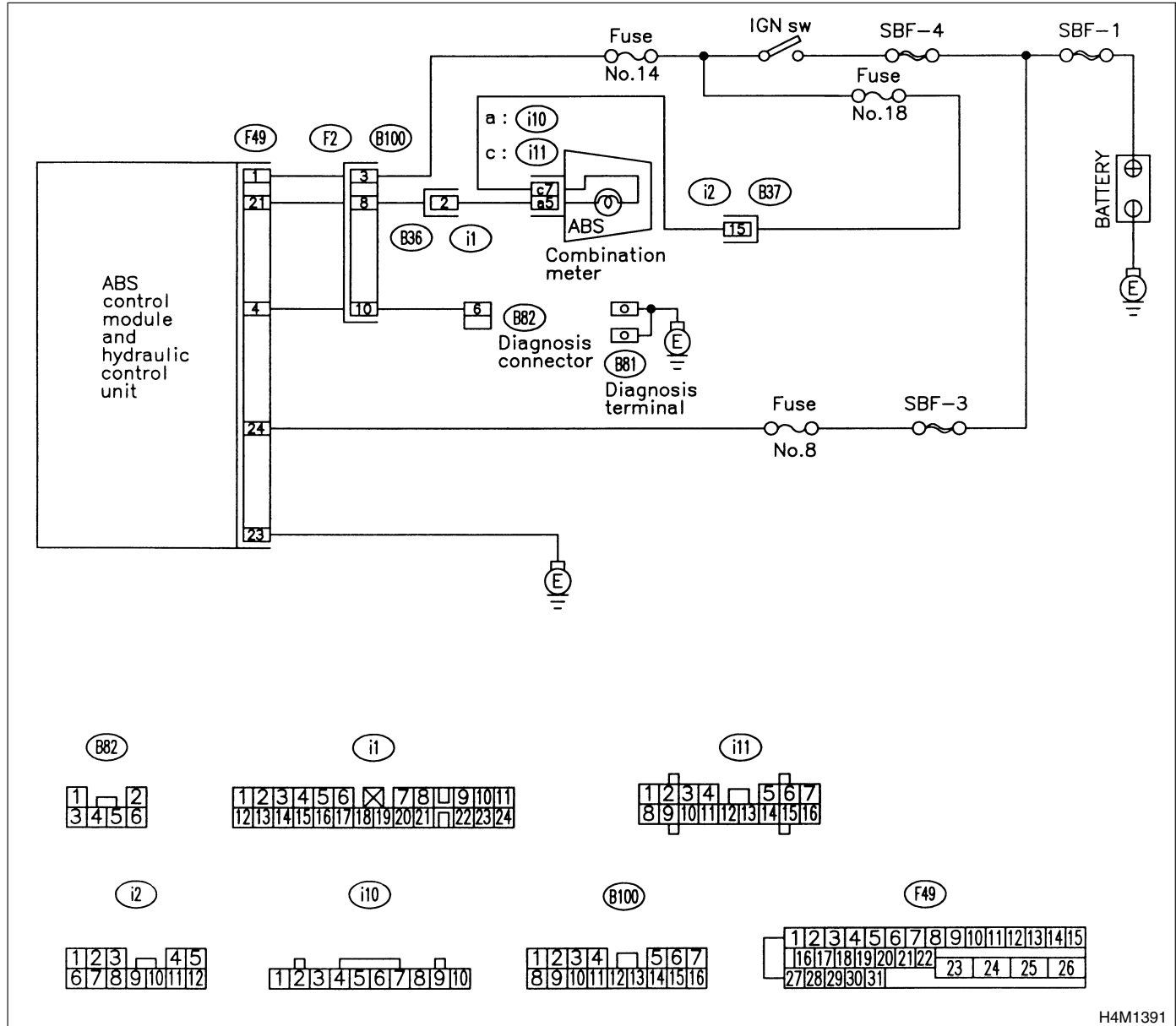
DIAGNOSIS:

- ABS warning light circuit is open or shorted.

TROUBLE SYMPTOM:

- When starting the engine and while ABS warning light is kept ON.

WIRING DIAGRAM:



H4M1391

DIAGNOSTICS CHART WITH DIAGNOSIS CONNECTOR

ABS

No.	Step	Check	Yes	No
1	CHECK INSTALLATION OF ABSCM&H/U CONNECTOR. Turn ignition switch to OFF.	Is ABSCM&H/U connector inserted into ABSCM until the clamp locks onto it?	Go to step 2.	Insert ABSCM&H/U connector into ABSCM&H/U until the clamp locks onto it.
2	CHECK DIAGNOSIS TERMINAL. Measure resistance between diagnosis terminals (B81) and chassis ground. <i>Terminals</i> <i>Diagnosis terminal (A) — Chassis ground:</i> <i>Diagnosis terminal (B) — Chassis ground:</i>	Is the resistance less than 0.5 Ω ?	Go to step 3.	Repair diagnosis terminal harness.
3	CHECK DIAGNOSIS LINE. 1) Turn ignition switch to OFF. 2) Connect diagnosis terminal (B81) to diagnosis connector (B82) No. 6. 3) Disconnect connector from ABSCM&H/U. 4) Measure resistance between ABSCM&H/U connector and chassis ground. <i>Connector & terminal (F49) No. 4 — Chassis ground:</i>	Is the resistance less than 0.5 Ω ?	Go to step 4.	Repair harness connector between ABSCM&H/U and diagnosis connector.
4	CHECK GENERATOR. 1) Start the engine. 2) Idle the engine. 3) Measure voltage between generator and chassis ground. <i>Terminal</i> <i>Generator B terminal (+) — Chassis ground (-):</i>	Is the voltage between 10 and 15 V?	Go to step 5.	Repair generator.
5	CHECK BATTERY TERMINAL. Turn ignition switch to OFF.	Is there poor contact at battery terminal?	Repair battery terminal.	Go to step 6.
6	CHECK POWER SUPPLY OF ABSCM. 1) Disconnect connector from ABSCM&H/U. 2) Start engine. 3) Idle the engine. 4) Measure voltage between ABSCM&H/U connector and chassis ground. <i>Connector & terminal (F49) No. 1 (+) — Chassis ground (-):</i>	Is the voltage between 10 and 15 V?	Go to step 7.	Repair ABSCM&H/U power supply circuit.
7	CHECK WIRING HARNESS. 1) Disconnect connector (F2) from connector (B100). 2) Turn ignition switch to ON.	Does the ABS warning light remain off?	Go to step 8.	Repair front wiring harness.
8	CHECK PROJECTION AT ABSCM&H/U. 1) Turn ignition switch to OFF. 2) Check for broken projection at the ABSCM&H/U terminal.	Are the projection broken?	Replace ABSCM&H/U.	Go to step 9.
9	CHECK ABSCM&H/U. Measure resistance between ABSCM&H/U terminals. <i>Terminal</i> <i>No. 21 — No. 23:</i>	Is the resistance more than 1 M Ω ?	Go to step 10.	Replace ABSCM&H/U.
10	CHECK WIRING HARNESS. Measure resistance between connector (F2) and chassis ground. <i>Connector & terminal (F2) No. 8 — Chassis ground:</i>	Is the resistance less than 0.5 Ω ?	Go to step 11.	Repair harness.

DIAGNOSTICS CHART WITH DIAGNOSIS CONNECTOR

ABS

No.	Step	Check	Yes	No
11	CHECK WIRING HARNESS. 1) Connect connector to ABSCM&H/U. 2) Measure resistance between connector (F2) and chassis ground. Connector & terminal (F2) No. 8 — Chassis ground:	Is the resistance more than 1 MΩ?	Go to step 12.	Repair harness.
12	CHECK POOR CONTACT IN ABSCM&H/U CONNECTOR.	Is there poor contact in ABSCM&H/U connector? <Ref. to EN-6 CAUTION, General Description.>	Repair connector.	Replace ABSCM&H/U.

MEMO:

DIAGNOSTICS CHART WITH DIAGNOSIS CONNECTOR

ABS

C: TROUBLE CODE DOES NOT APPEAR. S006522E50

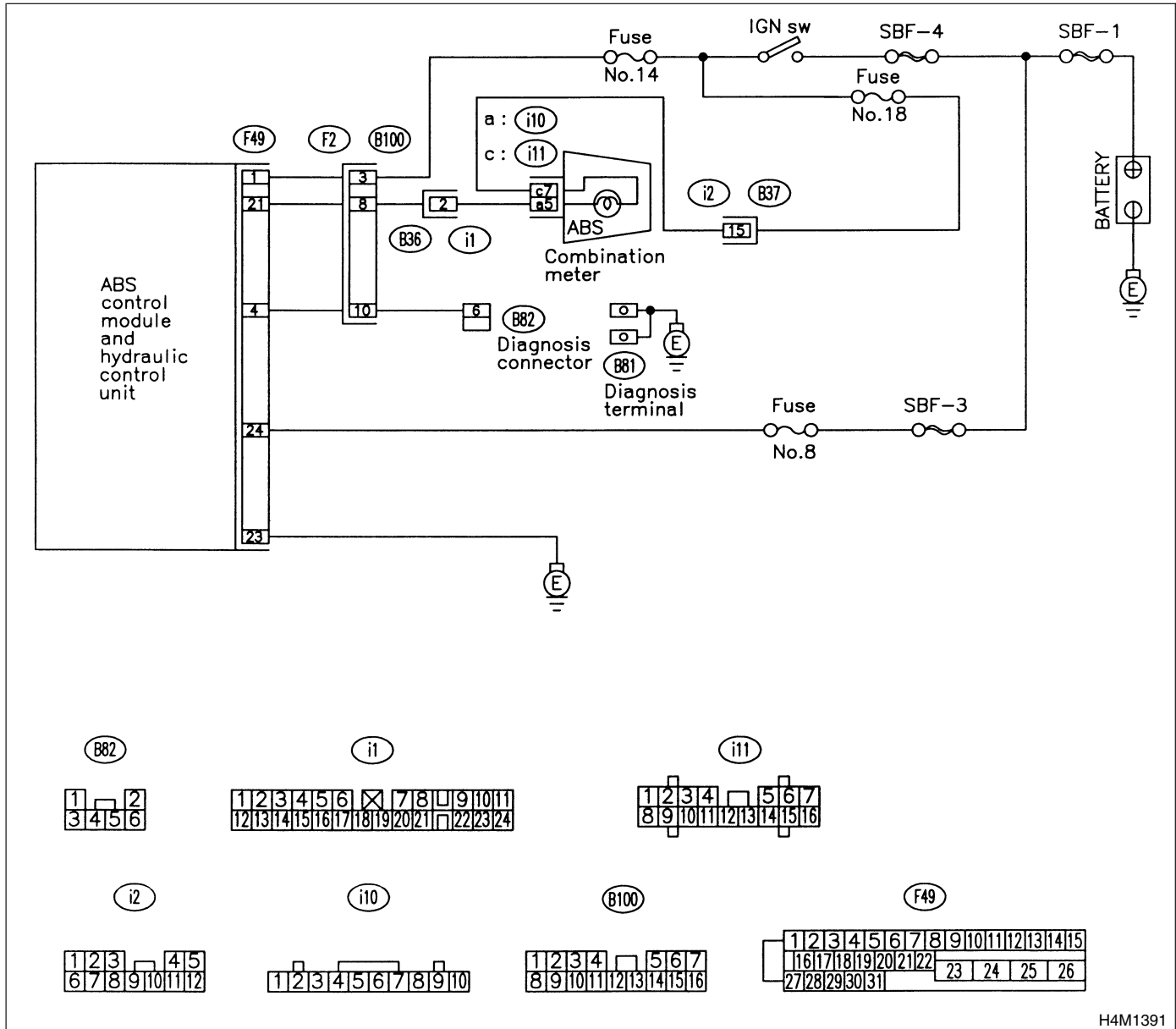
DIAGNOSIS:

- Diagnosis circuit is open.

TROUBLE SYMPTOM:

- The ABS warning light turns on or off normally but the start code cannot be read out in the diagnostic mode.

WIRING DIAGRAM:



H4M1391

DIAGNOSTICS CHART WITH DIAGNOSIS CONNECTOR

ABS

No.	Step	Check	Yes	No
1	CHECK DIAGNOSIS TERMINAL. Measure resistance between diagnosis terminals (B81) and chassis ground. Terminals <i>Diagnosis terminal (A) — Chassis ground:</i> <i>Diagnosis terminal (B) — Chassis ground:</i>	Is the resistance less than 0.5 Ω ?	Go to step 2.	Repair diagnosis terminal harness.
2	CHECK DIAGNOSIS LINE. 1) Turn ignition switch to OFF. 2) Connect diagnosis terminal (B81) to diagnosis connector (B82) No. 6. 3) Disconnect connector from ABSCM&H/U. 4) Measure resistance between ABSCM&H/U connector and chassis ground. Connector & terminal <i>(F49) No. 4 — Chassis ground:</i>	Is the resistance less than 0.5 Ω ?	Go to step 3.	Repair harness connector between ABSCM&H/U and diagnosis connector.
3	CHECK POOR CONTACT IN ABSCM&H/U CONNECTOR.	Is there poor contact in ABSCM&H/U connector? <Ref. to EN-6 CAUTION, General Description.>	Repair connector.	Replace ABSCM&H/U.

D: TROUBLE CODE 21

— ABNORMAL ABS SENSOR (OPEN CIRCUIT OR INPUT VOLTAGE TOO HIGH) (FRONT RH) — S006522E60

E: TROUBLE CODE 23

— ABNORMAL ABS SENSOR (OPEN CIRCUIT OR INPUT VOLTAGE TOO HIGH) (FRONT LH) — S006522E61

F: TROUBLE CODE 25

— ABNORMAL ABS SENSOR (OPEN CIRCUIT OR INPUT VOLTAGE TOO HIGH) (REAR RH) — S006522E62

G: TROUBLE CODE 27

— ABNORMAL ABS SENSOR (OPEN CIRCUIT OR INPUT VOLTAGE TOO HIGH) (REAR LH) — S006522E63

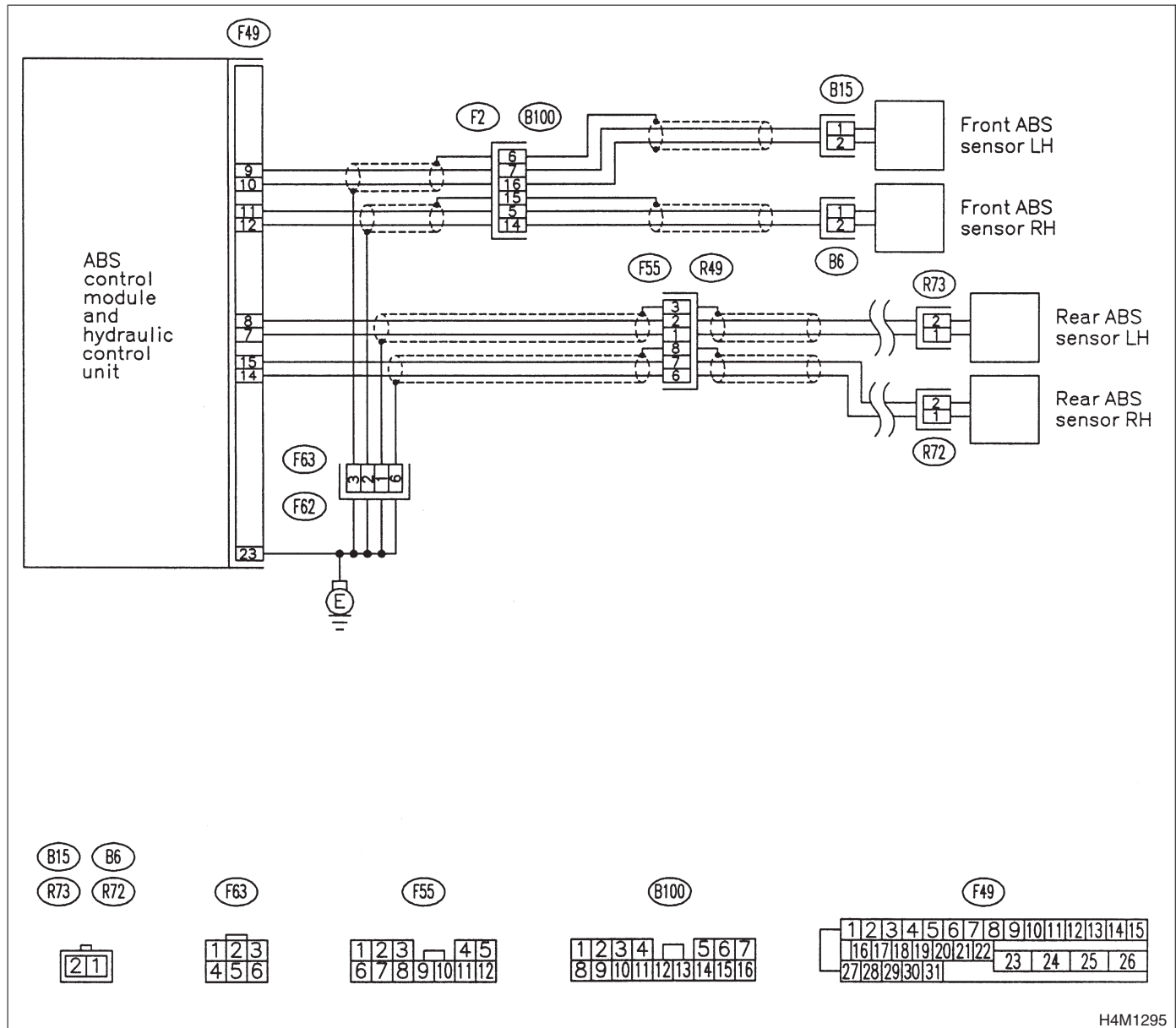
DIAGNOSIS:

- Faulty ABS sensor (Broken wire, input voltage too high)
- Faulty harness connector

TROUBLE SYMPTOM:

- ABS does not operate.

WIRING DIAGRAM:



H4M1295

DIAGNOSTICS CHART WITH DIAGNOSIS CONNECTOR

ABS

No.	Step	Check	Yes	No
1	CHECK FRONT ABS SENSOR. 1) Turn ignition switch to OFF. 2) Disconnect connector from front ABS sensor. 3) Measure resistance of front ABS sensor connector terminals. Terminal RH No. 1 — No. 2: LH No. 1 — No. 2:	Is the resistance between 1.0 and 1.5 kΩ?	Go to step 2.	Replace front ABS sensor.
2	CHECK REAR ABS SENSOR. 1) Turn ignition switch to OFF. 2) Disconnect connector from rear ABS sensor. 3) Measure resistance of rear ABS sensor connector terminals. Terminal RH No. 1 — No. 2: LH No. 1 — No. 2:	Is the resistance between 0.8 and 1.2 kΩ?	Go to step 3.	Replace rear ABS sensor.
3	CHECK BATTERY SHORT OF ABS SENSOR. 1) Disconnect connector from ABSCM&H/U. 2) Measure voltage between ABS sensor and chassis ground. Terminal Front RH No. 1 (+) — Chassis ground (-): Front LH No. 1 (+) — Chassis ground (-): Rear RH No. 1 (+) — Chassis ground (-): Rear LH No. 1 (+) — Chassis ground (-):	Is the voltage less than 1 V?	Go to step 4.	Replace ABS sensor.
4	CHECK BATTERY SHORT OF ABS SENSOR. 1) Turn ignition switch to ON. 2) Measure voltage between ABS sensor and chassis ground. Terminal Front RH No. 1 (+) — Chassis ground (-): Front LH No. 1 (+) — Chassis ground (-): Rear RH No. 1 (+) — Chassis ground (-): Rear LH No. 1 (+) — Chassis ground (-):	Is the voltage less than 1 V?	Go to step 5.	Replace ABS sensor.
5	CHECK TROUBLE CODE.	Is the trouble code 21 and/or 23?	Go to step 6.	Go to step 7.
6	CHECK HARNESS/CONNECTOR BETWEEN ABSCM&H/U AND ABS SENSOR. 1) Turn ignition switch to OFF. 2) Connect connector to ABS sensor. 3) Measure resistance between ABSCM&H/U connector terminals. Connector & terminal Trouble code 21 / (F49) No. 11 — No. 12: Trouble code 23 / (F49) No. 9 — No. 10:	Is the resistance between 1.0 and 1.5 kΩ?	Go to step 8.	Repair harness/connector between ABSCM&H/U and ABS sensor.

DIAGNOSTICS CHART WITH DIAGNOSIS CONNECTOR

ABS

No.	Step	Check	Yes	No
7	CHECK HARNESS/CONNECTOR BETWEEN ABSCM&H/U AND ABS SENSOR. 1) Turn ignition switch to OFF. 2) Connect connector to ABS sensor. 3) Measure resistance between ABSCM&H/U connector terminals. Connector & terminal Trouble code 25 / (F49) No. 14 — No. 15: Trouble code 27 / (F49) No. 7 — No. 8:	Is the resistance between 0.8 and 1.2 kΩ?	Go to step 8.	Repair harness/connector between ABSCM&H/U and ABS sensor.
8	CHECK BATTERY SHORT OF HARNESS. Measure voltage between ABSCM&H/U connector and chassis ground. Connector & terminal Trouble code 21 / (F49) No. 11 (+) — Chassis ground (-): Trouble code 23 / (F49) No. 9 (+) — Chassis ground (-): Trouble code 25 / (F49) No. 14 (+) — Chassis ground (-): Trouble code 27 / (F49) No. 7 (+) — Chassis ground (-):	Is the voltage less than 1 V?	Go to step 9.	Repair harness between ABSCM&H/U and ABS sensor.
9	CHECK BATTERY SHORT OF HARNESS. 1) Turn ignition switch to ON. 2) Measure voltage between ABSCM&H/U connector and chassis ground. Connector & terminal Trouble code 21 / (F49) No. 11 (+) — Chassis ground (-): Trouble code 23 / (F49) No. 9 (+) — Chassis ground (-): Trouble code 25 / (F49) No. 14 (+) — Chassis ground (-): Trouble code 27 / (F49) No. 7 (+) — Chassis ground (-):	Is the voltage less than 1 V?	Go to step 10.	Repair harness between ABSCM&H/U and ABS sensor.
10	CHECK INSTALLATION OF ABS SENSOR. Tightening torque: 32 N·m (3.3 kgf-m, 24 ft-lb)	Are the ABS sensor installation bolts tightened securely?	Go to step 11.	Tighten ABS sensor installation bolts securely.
11	CHECK TROUBLE CODE.	Is the trouble code 25 and/or 27?	Go to step 12.	Go to step 13.
12	CHECK INSTALLATION OF REAR TONE WHEEL. Tightening torque: 13 N·m (1.3 kgf-m, 9.4 ft-lb)	Are the rear tone wheel installation bolts tightened securely?	Go to step 13.	Tighten rear tone wheel installation bolts securely.
13	CHECK ABS SENSOR GAP. Measure tone wheel-to-pole piece gap over entire perimeter of the wheel. Specifications Front wheel 0.3 — 0.8 mm (0.012 — 0.031 in) Rear wheel 0.7 — 1.2 mm (0.028 — 0.047 in)	Is the gap within the specifications?	Go to step 14.	Adjust the gap. NOTE: Adjust the gap using spacers (Part No. 26755AA000). If spacers cannot correct the gap, replace worn sensor or worn tone wheel.
14	CHECK HUB RUNOUT. Measure hub runout.	Is the runout less than 0.05 mm (0.0020 in)?	Go to step 15.	Repair hub.

DIAGNOSTICS CHART WITH DIAGNOSIS CONNECTOR

ABS

No.	Step	Check	Yes	No
15	CHECK GROUND SHORT OF ABS SENSOR. 1) Turn ignition switch to OFF. 2) Measure resistance between ABS sensor and chassis ground. Terminal <i>Front RH No. 1 — Chassis ground:</i> <i>Front LH No. 1 — Chassis ground:</i> <i>Rear RH No. 1 — Chassis ground:</i> <i>Rear LH No. 1 — Chassis ground:</i>	Is the resistance more than 1 MΩ?	Go to step 16.	Replace ABS sensor and ABSCM&H/U.
16	CHECK GROUND SHORT OF HARNESS. 1) Turn ignition switch to OFF. 2) Connect connector to ABS sensor. 3) Measure resistance between ABSCM&H/U connector terminal and chassis ground. Connector & terminal <i>Trouble code 21 / (F49) No. 11 — Chassis ground:</i> <i>Trouble code 23 / (F49) No. 9 — Chassis ground:</i> <i>Trouble code 25 / (F49) No. 14 — Chassis ground:</i> <i>Trouble code 27 / (F49) No. 7 — Chassis ground:</i>	Is the resistance more than 1 MΩ?	Go to step 17.	Repair harness between ABSCM&H/U and ABS sensor. Replace ABSCM&H/U.
17	CHECK POOR CONTACT IN CONNECTORS.	Is there poor contact in connectors between ABSCM&H/U and ABS sensor? <Ref. to EN-6 CAUTION, General Description.>	Repair connector.	Go to step 18.
18	CHECK ABSCM&H/U. 1) Connect all connectors. 2) Erase the memory. 3) Perform inspection mode. 4) Read out the trouble code.	Is the same trouble code as in the current diagnosis still being output?	Replace ABSCM&H/U.	Go to step 19.
19	CHECK ANY OTHER TROUBLE CODES APPEARANCE.	Are other trouble codes being output?	Proceed with the diagnosis corresponding to the trouble code.	A temporary poor contact. NOTE: Check harness and connectors between ABSCM&H/U and ABS sensor.

MEMO:

DIAGNOSTICS CHART WITH DIAGNOSIS CONNECTOR

ABS

H: TROUBLE CODE 22

— ABNORMAL ABS SENSOR (FRONT RH) — S006522E64

I: TROUBLE CODE 24

— ABNORMAL ABS SENSOR (FRONT LH) — S006522E65

J: TROUBLE CODE 26

— ABNORMAL ABS SENSOR (REAR RH) — S006522E66

K: TROUBLE CODE 28

— ABNORMAL ABS SENSOR (REAR LH) — S006522E67

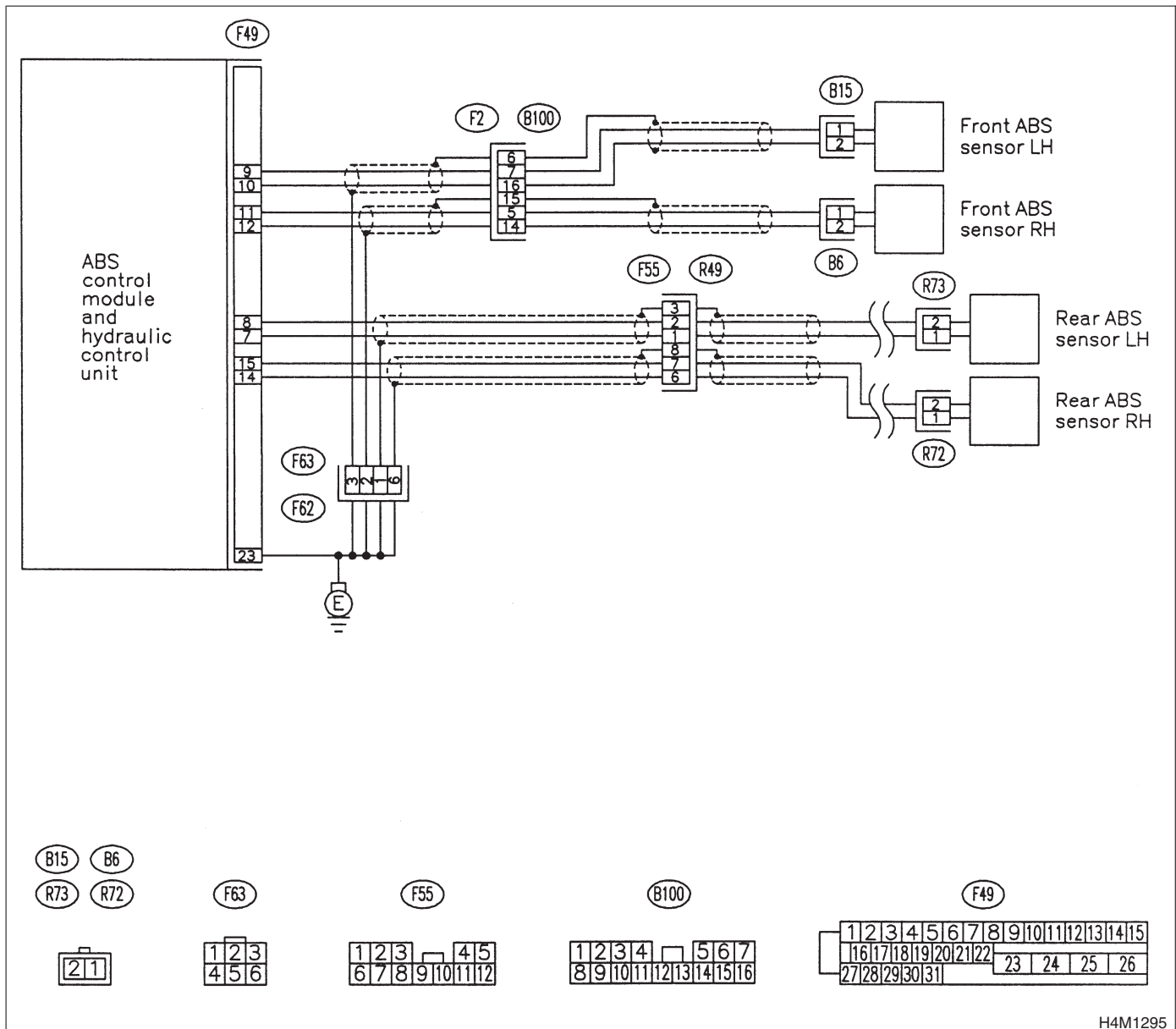
DIAGNOSIS:

- Faulty ABS sensor signal (noise, irregular signal, etc.)
- Faulty harness/connector

TROUBLE SYMPTOM:

- ABS does not operate.

WIRING DIAGRAM:



H4M1295

DIAGNOSTICS CHART WITH DIAGNOSIS CONNECTOR

ABS

No.	Step	Check	Yes	No
1	CHECK INSTALLATION OF ABS SENSOR. <i>Tightening torque:</i> 32 N·m (3.3 kgf-m, 24 ft-lb)	Are the ABS sensor installation bolts tightened securely?	Go to step 2.	Tighten ABS sensor installation bolts securely.
2	CHECK TROUBLE CODE.	Is the trouble code 26 and/or 28?	Go to step 3.	Go to step 4.
3	CHECK INSTALLATION OF REAR TONE WHEEL. <i>Tightening torque:</i> 13 N·m (1.3 kgf-m, 9.4 ft-lb)	Are the rear tone wheel installation bolts tightened securely?	Go to step 4.	Tighten rear tone wheel installation bolts securely.
4	CHECK ABS SENSOR GAP. Measure tone wheel to pole piece gap over entire perimeter of the wheel. <i>Specifications</i> <i>Front wheel</i> 0.3 — 0.8 mm (0.012 — 0.031 in) <i>Rear wheel</i> 0.7 — 1.2 mm (0.028 — 0.047 in)	Is the gap within the specifications?	Go to step 5.	Adjust the gap. NOTE: Adjust the gap using spacer (Part No. 26755AA000). If spacers cannot correct the gap, replace worn sensor or worn tone wheel.
5	PREPARE OSCILLOSCOPE.	Is an oscilloscope available?	Go to step 6.	Go to step 7.
6	CHECK ABS SENSOR SIGNAL. 1) Raise all four wheels of ground. 2) Turn ignition switch OFF. 3) Connect the oscilloscope to the connector. 4) Turn ignition switch ON. 5) Rotate wheels and measure voltage at specified frequency. NOTE: When this inspection is completed, the ABSCM&H/U sometimes stores the trouble code 29. <i>Connector & terminal</i> <i>Trouble code 22 / (B100) No. 5 (+) — No. 14 (-):</i> <i>Trouble code 24 / (B100) No. 7 (+) — No. 16 (-):</i> <i>Trouble code 26 / (F55) No. 6 (+) — No. 7 (-):</i> <i>Trouble code 28 / (F55) No. 1 (+) — No. 2 (-):</i>	Is oscilloscope pattern smooth, as shown in figure?	Go to step 10.	Go to step 7.
7	CHECK CONTAMINATION OF ABS SENSOR OR TONE WHEEL. Remove disc rotor or drum from hub in accordance with trouble code.	Is the ABS sensor pole piece or the tone wheel contaminated by dirt or other foreign matter?	Thoroughly remove dirt or other foreign matter.	Go to step 8.
8	CHECK DAMAGE OF ABS SENSOR OR TONE WHEEL.	Are there broken or damaged in the ABS sensor pole piece or the tone wheel?	Replace ABS sensor or tone wheel.	Go to step 9.
9	CHECK HUB RUNOUT. Measure hub runout.	Is the runout less than 0.05 mm (0.0020 in)?	Go to step 10.	Repair hub.

DIAGNOSTICS CHART WITH DIAGNOSIS CONNECTOR

ABS

No.	Step	Check	Yes	No
10	CHECK RESISTANCE OF FRONT ABS SENSOR. 1) Turn ignition switch to OFF. 2) Disconnect connector from front ABS sensor. 3) Measure resistance between front ABS sensor connector terminals. Terminal RH No. 1 — No. 2: LH No. 1 — No. 2:	Is the resistance between 1.0 and 1.5 kΩ?	Go to step 11.	Replace front ABS sensor.
11	CHECK RESISTANCE OF REAR ABS SENSOR. 1) Turn ignition switch to OFF. 2) Disconnect connector from rear ABS sensor. 3) Measure resistance between rear ABS sensor connector terminals. Terminal RH No. 1 — No. 2: LH No. 1 — No. 2:	Is the resistance between 0.8 and 1.2 kΩ?	Go to step 12.	Replace rear ABS sensor.
12	CHECK GROUND SHORT OF ABS SENSOR. Measure resistance between ABS sensor and chassis ground. Terminal Front RH No. 1 — Chassis ground: Front LH No. 1 — Chassis ground: Rear RH No. 1 — Chassis ground: Rear LH No. 1 — Chassis ground:	Is the resistance more than 1 MΩ?	Go to step 13.	Replace ABS sensor.
13	CHECK TROUBLE CODE.	Is the trouble code 22 and/or 24?	Go to step 14.	Go to step 15.
14	CHECK HARNESS/CONNECTOR BETWEEN ABSCM&H/U AND ABS SENSOR. 1) Connect connector to ABS sensor. 2) Disconnect connector from ABSCM&H/U. 3) Measure resistance at ABSCM&H/U connector terminals. Connector & terminal Trouble code 22 / (F49) No. 11 — No. 12: Trouble code 24 / (F49) No. 9 — No. 10:	Is the resistance between 1.0 and 1.5 kΩ?	Go to step 16.	Repair harness/connector between ABSCM&H/U and ABS sensor.
15	CHECK HARNESS/CONNECTOR BETWEEN ABSCM&H/U AND ABS SENSOR. 1) Connect connector to ABS sensor. 2) Disconnect connector from ABSCM&H/U. 3) Measure resistance at ABSCM&H/U connector terminals. Connector & terminal Trouble code 26 / (F49) No. 14 — No. 15: Trouble code 28 / (F49) No. 7 — No. 8:	Is the resistance between 0.8 and 1.2 kΩ?	Go to step 16.	Repair harness/connector between ABSCM&H/U and ABS sensor.

DIAGNOSTICS CHART WITH DIAGNOSIS CONNECTOR

ABS

No.	Step	Check	Yes	No
16	CHECK GROUND SHORT OF HARNESS. Measure resistance between ABSCM&H/U connector and chassis ground. Connector & terminal <i>Trouble code 22 / (F49) No. 11 — Chassis ground:</i> <i>Trouble code 24 / (F49) No. 9 — Chassis ground:</i> <i>Trouble code 26 / (F49) No. 14 — Chassis ground:</i> <i>Trouble code 28 / (F49) No. 7 — Chassis ground:</i>	Is the resistance more than 1 MΩ?	Go to step 17.	Repair harness/connector between ABSCM&H/U and ABS sensor.
17	CHECK GROUND CIRCUIT OF ABSCM&H/U. Measure resistance between ABSCM&H/U and chassis ground. Connector & terminal <i>(F49) No. 23 — Chassis ground:</i>	Is the resistance less than 0.5 Ω?	Go to step 18.	Repair ABSCM&H/U ground harness.
18	CHECK POOR CONTACT IN CONNECTORS.	Is there poor contact in connectors between ABSCM&H/U and ABS sensor? <Ref. to EN-6 CAUTION, General Description.>	Repair connector.	Go to step 19.
19	CHECK SOURCES OF SIGNAL NOISE.	Is the car telephone or the wireless transmitter properly installed?	Go to step 20.	Properly install the car telephone or the wireless transmitter.
20	CHECK SOURCES OF SIGNAL NOISE.	Are noise sources (such as an antenna) installed near the sensor harness?	Install the noise sources apart from the sensor harness.	Go to step 21.
21	CHECK SHIELD CIRCUIT. 1) Connect all connectors. 2) Measure resistance between shield connector and chassis ground. Connector & terminal <i>Trouble code 22 / (B100) No. 15 — Chassis ground:</i> <i>Trouble code 24 / (B100) No. 6 — Chassis ground:</i> <i>Trouble code 26 / (F55) No. 8 — Chassis ground:</i> <i>Trouble code 28 / (F55) No. 3 — Chassis ground:</i>	Is the resistance less than 0.5 Ω?	Go to step 22.	Repair shield harness.
22	CHECK ABSCM&H/U. 1) Connect all connectors. 2) Erase the memory. 3) Perform inspection mode. 4) Read out the trouble code.	Is the same trouble code as in the current diagnosis still being output?	Replace ABSCM&H/U.	Go to step 23.
23	CHECK ANY OTHER TROUBLE CODES APPEARANCE.	Are other trouble codes being output?	Proceed with the diagnosis corresponding to the trouble code.	A temporary noise interference.

DIAGNOSTICS CHART WITH DIAGNOSIS CONNECTOR

ABS

L: TROUBLE CODE 29

— ABNORMAL ABS SENSOR SIGNAL (ANY ONE OF FOUR) —

S006522E68

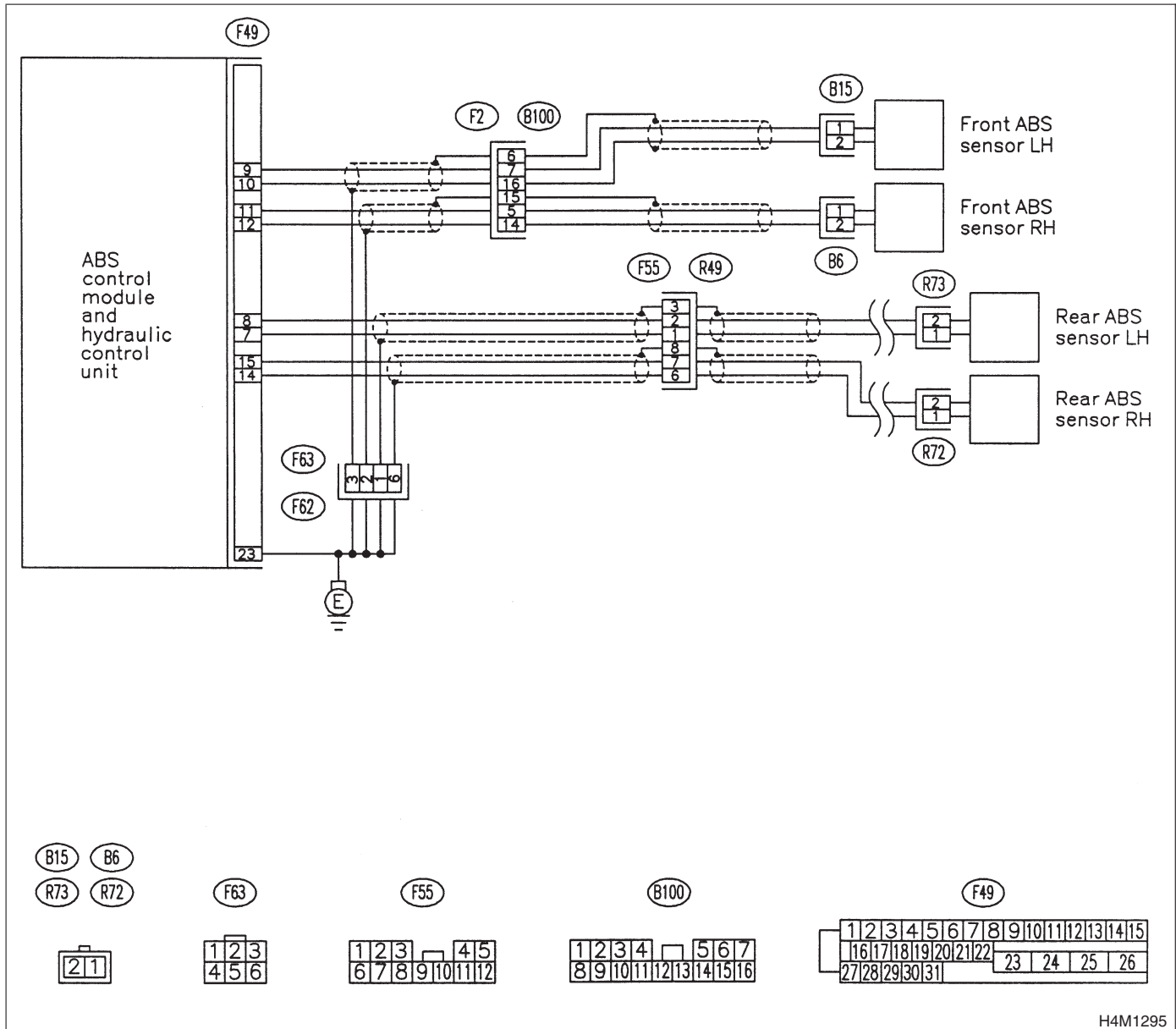
DIAGNOSIS:

- Faulty ABS sensor signal (noise, irregular signal, etc.)
- Faulty tone wheel
- Wheels turning freely for a long time

TROUBLE SYMPTOM:

- ABS does not operate.

WIRING DIAGRAM:



H4M1295

DIAGNOSTICS CHART WITH DIAGNOSIS CONNECTOR

ABS

No.	Step	Check	Yes	No
1	CHECK IF THE WHEELS HAVE TURNED FREELY FOR A LONG TIME.	Check if the wheels have been turned freely for more than one minute, such as when the vehicle is jacked-up, under full-lock cornering or when tire is not in contact with road surface.	The ABS is normal. Erase the trouble code. NOTE: When the wheels turn freely for a long time, such as when the vehicle is towed or jacked-up, or when steering wheel is continuously turned all the way, this trouble code may sometimes occur.	Go to step 2.
2	CHECK TIRE SPECIFICATIONS.	Are the tire specifications correct?	Go to step 3.	Replace tire.
3	CHECK WEAR OF TIRE.	Is the tire worn excessively?	Replace tire.	Go to step 4.
4	CHECK TIRE PRESSURE.	Is the tire pressure correct?	Go to step 5.	Adjust tire pressure.
5	CHECK INSTALLATION OF ABS SENSOR. <i>Tightening torque:</i> 32 N·m (3.3 kgf-m, 24 ft-lb)	Are the ABS sensor installation bolts tightened securely?	Go to step 6.	Tighten ABS sensor installation bolts securely.
6	CHECK INSTALLATION OF REAR TONE WHEEL. <i>Tightening torque:</i> 13 N·m (1.3 kgf-m, 9.4 ft-lb)	Are the rear tone wheel installation bolts tightened securely?	Go to step 7.	Tighten rear tone wheel installation bolts securely.
7	CHECK ABS SENSOR GAP. Measure tone wheel to pole piece gap over entire perimeter of the wheel. Specifications Front wheel 0.3 — 0.8 mm (0.012 — 0.031 in) Rear wheel 0.7 — 1.2 mm (0.028 — 0.047 in)	Is the gap within the specifications?	Go to step 8.	Adjust the gap. NOTE: Adjust the gap using spacer (Part No. 26755AA000). If spacers cannot correct the gap, replace worn sensor or worn tone wheel.
8	PREPARE OSCILLOSCOPE.	Is an oscilloscope available?	Go to step 9.	Go to step 10.
9	CHECK ABS SENSOR SIGNAL. 1) Raise all four wheels of ground. 2) Turn ignition switch OFF. 3) Connect the oscilloscope to the connector. 4) Turn ignition switch ON. 5) Rotate wheels and measure voltage at specified frequency. NOTE: When this inspection is completed, the ABSCM&H/U sometimes stores the trouble code 29. Connector & terminal (B100) No. 5 (+) — No. 14 (-) (Front RH): (B100) No. 7 (+) — No. 16 (-) (Front LH): (F55) No. 6 (+) — No. 7 (-) (Rear RH): (F55) No. 1 (+) — No. 2 (-) (Rear LH):	Is oscilloscope pattern smooth, as shown in figure?	Go to step 13.	Go to step 10.

DIAGNOSTICS CHART WITH DIAGNOSIS CONNECTOR

ABS

No.	Step	Check	Yes	No
10	CHECK CONTAMINATION OF ABS SENSOR OR TONE WHEEL. Remove disc rotor from hub.	Is the ABS sensor pole piece or the tone wheel contaminated by dirt or other foreign matter?	Thoroughly remove dirt or other foreign matter.	Go to step 11.
11	CHECK DAMAGE OF ABS SENSOR OR TONE WHEEL.	Are there broken or damaged teeth in the ABS sensor pole piece or the tone wheel?	Replace ABS sensor or tone wheel.	Go to step 12.
12	CHECK HUB RUNOUT. Measure hub runout.	Is the runout less than 0.05 mm (0.0020 in)?	Go to step 13.	Repair hub.
13	CHECK ABSCM&H/U. 1) Turn ignition switch to OFF. 2) Connect all connectors. 3) Erase the memory. 4) Perform inspection mode. 5) Read out the trouble code.	Is the same trouble code as in the current diagnosis still being output?	Replace ABSCM&H/U.	Go to step 14.
14	CHECK ANY OTHER TROUBLE CODES APPEARANCE.	Are other trouble codes being output?	Proceed with the diagnosis corresponding to the trouble code.	A temporary poor contact.

MEMO:

DIAGNOSTICS CHART WITH DIAGNOSIS CONNECTOR

ABS

M: TROUBLE CODE 31

— **ABNORMAL INLET SOLENOID VALVE CIRCUIT(S) IN ABSCM&H/U (FRONT RH)** — S006522E69

N: TROUBLE CODE 33

— **ABNORMAL INLET SOLENOID VALVE CIRCUIT(S) IN ABSCM&H/U (FRONT LH)** — S006522E70

O: TROUBLE CODE 35

— **ABNORMAL INLET SOLENOID VALVE CIRCUIT(S) IN ABSCM&H/U (REAR RH)** — S006522E71

P: TROUBLE CODE 37

— **ABNORMAL INLET SOLENOID VALVE CIRCUIT(S) IN ABSCM&H/U (REAR LH)** — S006522E72

DIAGNOSIS:

- Faulty harness/connector
- Faulty inlet solenoid valve in ABSCM&H/U

TROUBLE SYMPTOM:

- ABS does not operate.

ABS

Wiring diagram for the ABS control module and hydraulic control unit. The diagram shows the ABS control module connected to a battery and a generator. The battery is connected to the module via a fuse (F2) and a switch (B100). The generator is connected to the module via a fuse (F49) and a switch (B100). The module is labeled "ABS control module and hydraulic control unit". The battery is labeled "BATTERY" and the generator is labeled "Generator". The diagram includes a legend for the module's pins: F49 (1-15) and B100 (1-16).

Legend:

F49	1	2	3	4	5	6	7	8	9	10	11	12	13	14	15
	16	17	18	19	20	21	22	23	24	25	26				
	27	28	29	30	31										

B100	1	2	3	4	5	6	7
	8	9	10	11	12	13	14
	15	16					

DIAGNOSTICS CHART WITH DIAGNOSIS CONNECTOR

ABS

No.	Step	Check	Yes	No
1	CHECK INPUT VOLTAGE OF ABSCM&H/U. 1) Turn ignition switch to OFF. 2) Disconnect connector from ABSCM&H/U. 3) Run the engine at idle. 4) Measure voltage between ABSCM&H/U connector and chassis ground. Connector & terminal (F49) No. 1 (+) — Chassis ground (–):	Is the voltage between 10 V and 15 V?	Go to step 2.	Repair harness connector between battery, ignition switch and ABSCM&H/U.
2	CHECK GROUND CIRCUIT OF ABSCM&H/U. 1) Turn ignition switch to OFF. 2) Measure resistance between ABSCM&H/U connector and chassis ground. Connector & terminal (F49) No. 23 — Chassis ground:	Is the resistance less than 0.5 Ω?	Go to step 3.	Repair ABSCM&H/U ground harness.
3	CHECK POOR CONTACT IN CONNECTORS.	Is there poor contact in connectors between generator, battery and ABSCM&H/U? <Ref. to EN-6 CAUTION, General Description.>	Repair connector.	Go to step 4.
4	CHECK ABSCM&H/U. 1) Connect all connectors. 2) Erase the memory. 3) Perform inspection mode. 4) Read out the trouble code.	Is the same trouble code as in the current diagnosis still being output?	Replace ABSCM&H/U.	Go to step 5.
5	CHECK ANY OTHER TROUBLE CODES APPEARANCE.	Are other trouble codes being output?	Proceed with the diagnosis corresponding to the trouble code.	A temporary poor contact.

MEMO:

Q: TROUBLE CODE 32

— ABNORMAL OUTLET SOLENOID VALVE CIRCUIT(S) IN ABSCM&H/U
(FRONT RH) — S006522E73

R: TROUBLE CODE 34

— ABNORMAL OUTLET SOLENOID VALVE CIRCUIT(S) IN ABSCM&H/U
(FRONT LH) — S006522E74

S: TROUBLE CODE 36

— ABNORMAL OUTLET SOLENOID VALVE CIRCUIT(S) IN ABSCM&H/U
(REAR RH) — S006522E75

T: TROUBLE CODE 38

— ABNORMAL OUTLET SOLENOID VALVE CIRCUIT(S) IN ABSCM&H/U
(REAR LH) — S006522E76

DIAGNOSIS:

- Faulty harness/connector
- Faulty outlet solenoid valve in ABSCM&H/U

TROUBLE SYMPTOM:

- ABS does not operate.

ABS

Wiring diagram for the ABS control module and hydraulic control unit. The diagram shows the ABS control module connected to a battery and a generator. The battery is connected to the module via a fuse (F2) and a switch (B100). The generator is connected to the module via a fuse (F49) and a switch (B100). The module is labeled "ABS control module and hydraulic control unit". The battery is labeled "BATTERY" and the generator is labeled "Generator". The diagram includes a legend for the module's pins: F49 (1-15) and B100 (1-16).

Legend:

F49	1	2	3	4	5	6	7	8	9	10	11	12	13	14	15
	16	17	18	19	20	21	22	23	24	25	26				
	27	28	29	30	31										

B100	1	2	3	4	5	6	7
	8	9	10	11	12	13	14
	15	16					

DIAGNOSTICS CHART WITH DIAGNOSIS CONNECTOR

ABS

No.	Step	Check	Yes	No
1	CHECK INPUT VOLTAGE OF ABSCM&H/U. 1) Turn ignition switch to OFF. 2) Disconnect connector from ABSCM&H/U. 3) Run the engine at idle. 4) Measure voltage between ABSCM&H/U connector and chassis ground. Connector & terminal (F49) No. 1 (+) — Chassis ground (-):	Is the voltage between 10 V and 15 V?	Go to step 2.	Repair harness connector between battery, ignition switch and ABSCM&H/U.
2	CHECK GROUND CIRCUIT OF ABSCM&H/U. 1) Turn ignition switch to OFF. 2) Measure resistance between ABSCM&H/U connector and chassis ground. Connector & terminal (F49) No. 23 — Chassis ground:	Is the resistance less than 0.5 Ω?	Go to step 3.	Repair ABSCM&H/U ground harness.
3	CHECK POOR CONTACT IN CONNECTORS.	Is there poor contact in connectors between generator, battery and ABSCM&H/U? <Ref. to EN-6 CAUTION, General Description.>	Repair connector.	Go to step 4.
4	CHECK ABSCM&H/U. 1) Connect all connectors. 2) Erase the memory. 3) Perform inspection mode. 4) Read out the trouble code.	Is the same trouble code as in the current diagnosis still being output?	Replace ABSCM&H/U.	Go to step 5.
5	CHECK ANY OTHER TROUBLE CODES APPEARANCE.	Are other trouble codes being output?	Proceed with the diagnosis corresponding to the trouble code.	A temporary poor contact.

MEMO:

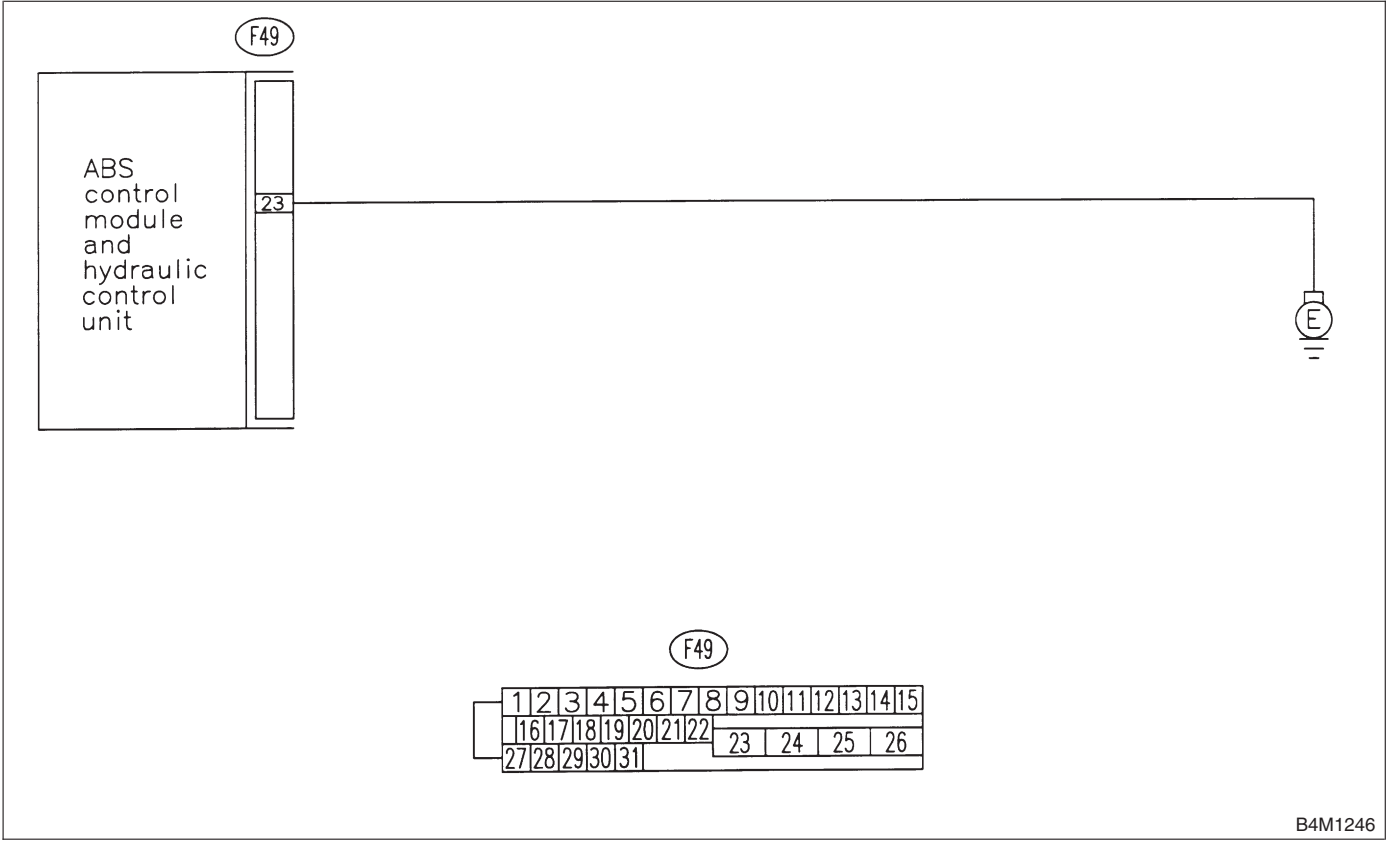
U: TROUBLE CODE 41
— ABNORMAL ABS CONTROL MODULE — S006522D29

- DIAGNOSIS:
- Faulty ABSCM&H/U

TROUBLE SYMPTOM:

- ABS does not operate.

WIRING DIAGRAM:



DIAGNOSTICS CHART WITH DIAGNOSIS CONNECTOR

ABS

No.	Step	Check	Yes	No
1	CHECK GROUND CIRCUIT OF ABSCM&H/U. 1) Turn ignition switch to OFF. 2) Disconnect connector from ABSCM&H/U. 3) Measure resistance between ABSCM&H/U and chassis ground. Connector & terminal (F49) No. 23 — Chassis ground:	Is the resistance less than 0.5 Ω ?	Go to step 2.	Repair ABSCM&H/U ground harness.
2	CHECK POOR CONTACT IN CONNECTORS.	Is there poor contact in connectors between battery, ignition switch and ABSCM&H/U? <Ref. to EN-6 CAUTION, General Description.>	Repair connector.	Go to step 3.
3	CHECK SOURCES OF SIGNAL NOISE.	Is the car telephone or the wireless transmitter properly installed?	Go to step 4.	Properly install the car telephone or the wireless transmitter.
4	CHECK SOURCES OF SIGNAL NOISE.	Are noise sources (such as an antenna) installed near the sensor harness?	Install the noise sources apart from the sensor harness.	Go to step 5.
5	CHECK ABSCM&H/U. 1) Connect all connectors. 2) Erase the memory. 3) Perform inspection mode. 4) Read out the trouble code.	Is the same trouble code as in the current diagnosis still being output?	Replace ABSCM&H/U.	Go to step 6.
6	CHECK ANY OTHER TROUBLE CODES APPEARANCE.	Are other trouble codes being output?	Proceed with the diagnosis corresponding to the trouble code.	A temporary poor contact.

DIAGNOSTICS CHART WITH DIAGNOSIS CONNECTOR

ABS

V: TROUBLE CODE 42

— SOURCE VOLTAGE IS ABNORMAL. — S006522D37

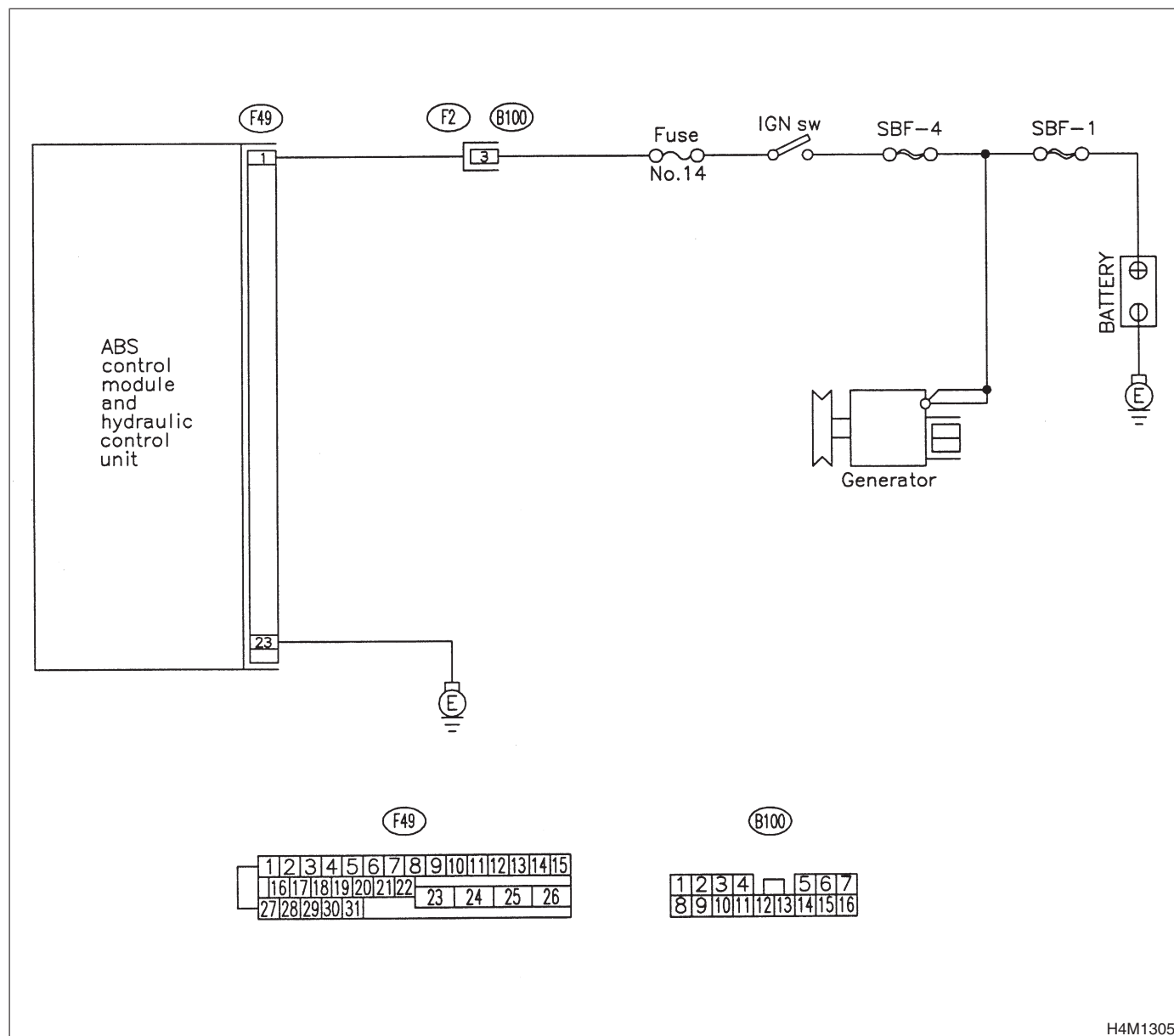
DIAGNOSIS:

- Power source voltage of the ABSCM&H/U is low or high.

TROUBLE SYMPTOM:

- ABS does not operate.

WIRING DIAGRAM:



H4M1305

DIAGNOSTICS CHART WITH DIAGNOSIS CONNECTOR

ABS

No.	Step	Check	Yes	No
1	CHECK GENERATOR. 1) Start engine. 2) Idling after warm-up. 3) Measure voltage between generator B terminal and chassis ground. Terminal Generator B terminal — Chassis ground:	Is the voltage between 10 V and 15 V?	Go to step 2.	Repair generator.
2	CHECK BATTERY TERMINAL. Turn ignition switch to OFF.	Are the positive and negative battery terminals tightly clamped?	Go to step 3.	Tighten the clamp of terminal.
3	CHECK INPUT VOLTAGE OF ABSCM&H/U. 1) Disconnect connector from ABSCM&H/U. 2) Run the engine at idle. 3) Measure voltage between ABSCM&H/U connector and chassis ground. Connector & terminal (F49) No. 1 (+) — Chassis ground (-):	Is the voltage between 10 V and 15 V?	Go to step 4.	Repair harness connector between battery, ignition switch and ABSCM&H/U.
4	CHECK GROUND CIRCUIT OF ABSCM&H/U. 1) Turn ignition switch to OFF. 2) Measure resistance between ABSCM&H/U connector and chassis ground. Connector & terminal (F49) No. 23 — Chassis ground:	Is the resistance less than 0.5 Ω ?	Go to step 5.	Repair ABSCM&H/U ground harness.
5	CHECK POOR CONTACT IN CONNECTORS.	Is there poor contact in connectors between generator, battery and ABSCM&H/U? <Ref. to EN-6 CAUTION, General Description.>	Repair connector.	Go to step 6.
6	CHECK ABSCM&H/U. 1) Connect all connectors. 2) Erase the memory. 3) Perform inspection mode. 4) Read out the trouble code.	Is the same trouble code as in the current diagnosis still being output?	Replace ABSCM&H/U.	Go to step 7.
7	CHECK ANY OTHER TROUBLE CODES APPEARANCE.	Are other trouble codes being output?	Proceed with the diagnosis corresponding to the trouble code.	A temporary poor contact.

DIAGNOSTICS CHART WITH DIAGNOSIS CONNECTOR

ABS

W: TROUBLE CODE 44

— A COMBINATION OF AT CONTROL ABNORMAL —

S006522D42

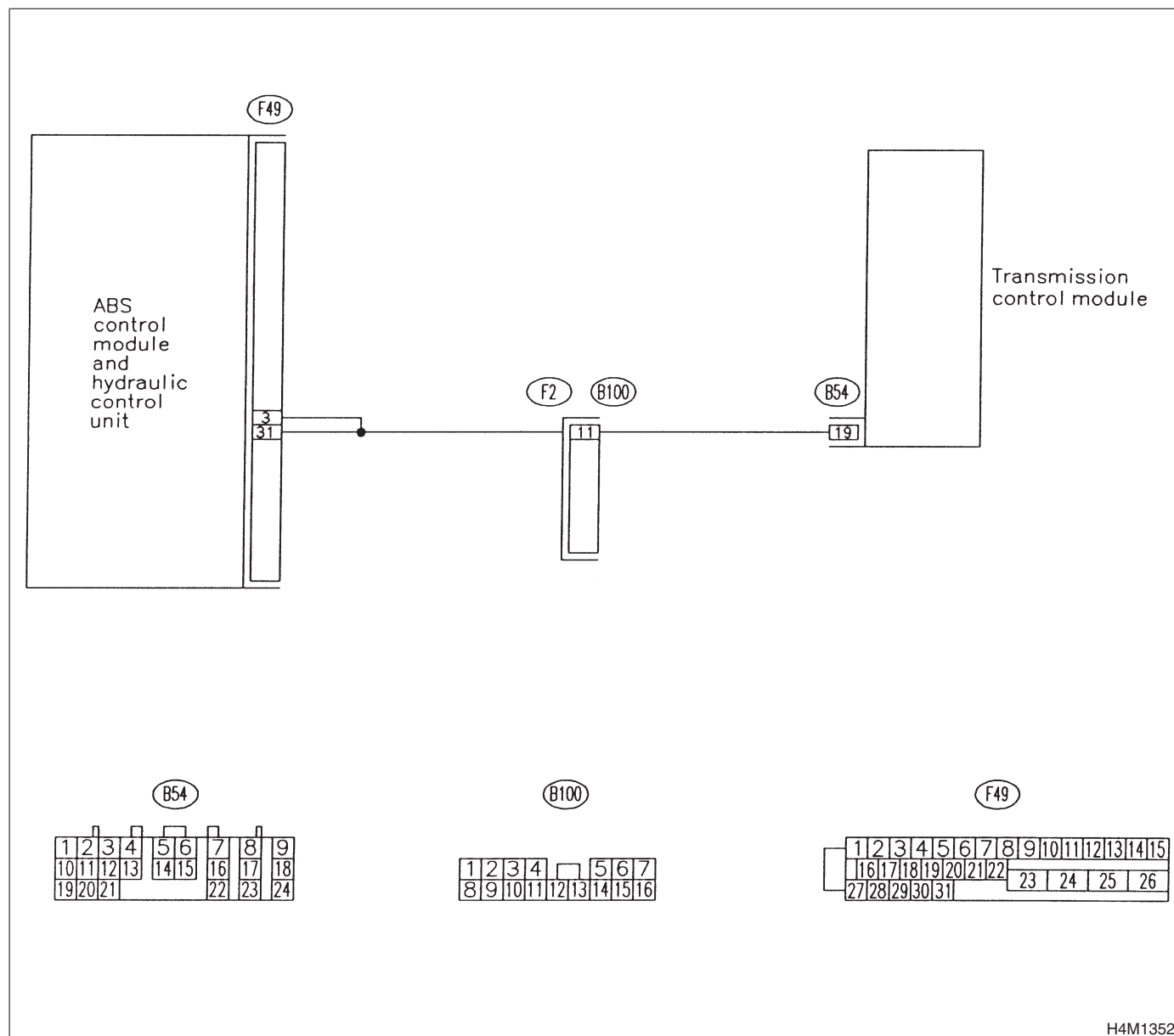
DIAGNOSIS:

- Combination of AT control faults

TROUBLE SYMPTOM:

- ABS does not operate.

WIRING DIAGRAM:



H4M1352

DIAGNOSTICS CHART WITH DIAGNOSIS CONNECTOR

ABS

No.	Step	Check	Yes	No
1	CHECK SPECIFICATIONS OF THE ABSCM&H/U. Check specifications of the mark to the ABSCM&H/U. <i>Mark: C5</i> <i>Model</i> <i>AWD AT</i> <i>Mark: C6</i> <i>Model</i> <i>AWD MT</i>	Is an ABSCM&H/U for AT model installed on a MT model?	Replace ABSCM&H/U.	Go to step 2.
2	CHECK GROUND SHORT OF HARNESS. 1) Turn ignition switch to OFF. 2) Disconnect two connectors from TCM. 3) Disconnect connector from ABSCM&H/U. 4) Measure resistance between ABSCM&H/U connector and chassis ground. <i>Connector & terminal</i> <i>(F49) No. 3 — Chassis ground:</i>	Is the resistance more than 1 MΩ?	Go to step 3.	Repair harness between TCM and ABSCM&H/U.
3	CHECK BATTERY SHORT OF HARNESS. Measure voltage between ABSCM&H/U connector and chassis ground. <i>Connector & terminal</i> <i>(F49) No. 3 (+) — Chassis ground (-):</i>	Is the voltage less than 1 V?	Go to step 4.	Repair harness between TCM and ABSCM&H/U.
4	CHECK BATTERY SHORT OF HARNESS. 1) Turn ignition switch to ON. 2) Measure voltage between ABSCM&H/U connector and chassis ground. <i>Connector & terminal</i> <i>(F49) No. 3 (+) — Chassis ground (-):</i>	Is the voltage less than 1 V?	Go to step 5.	Repair harness between TCM and ABSCM&H/U.
5	CHECK TCM. 1) Turn ignition switch to OFF. 2) Connect all connectors to TCM. 3) Turn ignition switch to ON. 4) Measure voltage between TCM connector terminal and chassis ground. <i>Connector & terminal</i> <i>(B54) No. 19 (+) — Chassis ground (-):</i>	Is the voltage between 10 V and 15 V?	Go to step 7.	Go to step 6.
6	CHECK AT.	Is the AT functioning normally?	Replace TCM.	Repair AT.
7	CHECK OPEN CIRCUIT OF HARNESS. Measure voltage between ABSCM&H/U connector and chassis ground. <i>Connector & terminal</i> <i>(F49) No. 3 (+) — Chassis ground (-):</i> <i>(F49) No. 31 (+) — Chassis ground (-):</i>	Is the voltage between 10 V and 15 V?	Go to step 8.	Repair harness/connector between TCM and ABSCM&H/U.
8	CHECK POOR CONTACT IN CONNECTORS.	Is there poor contact in connectors between TCM and ABSCM&H/U? <Ref. to EN-6 CAUTION, General Description.>	Repair connector.	Go to step 9.
9	CHECK ABSCM&H/U. 1) Turn ignition switch to OFF. 2) Connect all connectors. 3) Erase the memory. 4) Perform inspection mode. 5) Read out the trouble code.	Is the same trouble code as in the current diagnosis still being output?	Replace ABSCM&H/U.	Go to step 10.

DIAGNOSTICS CHART WITH DIAGNOSIS CONNECTOR

No.	Step	Check	Yes	No
10	CHECK ANY OTHER TROUBLE CODES APPEARANCE.	Are other trouble codes being output?	Proceed with the diagnosis corresponding to the trouble code.	A temporary poor contact.

MEMO:

DIAGNOSTICS CHART WITH DIAGNOSIS CONNECTOR

ABS

X: TROUBLE CODE 51

— ABNORMAL VALVE RELAY —

S006522D61

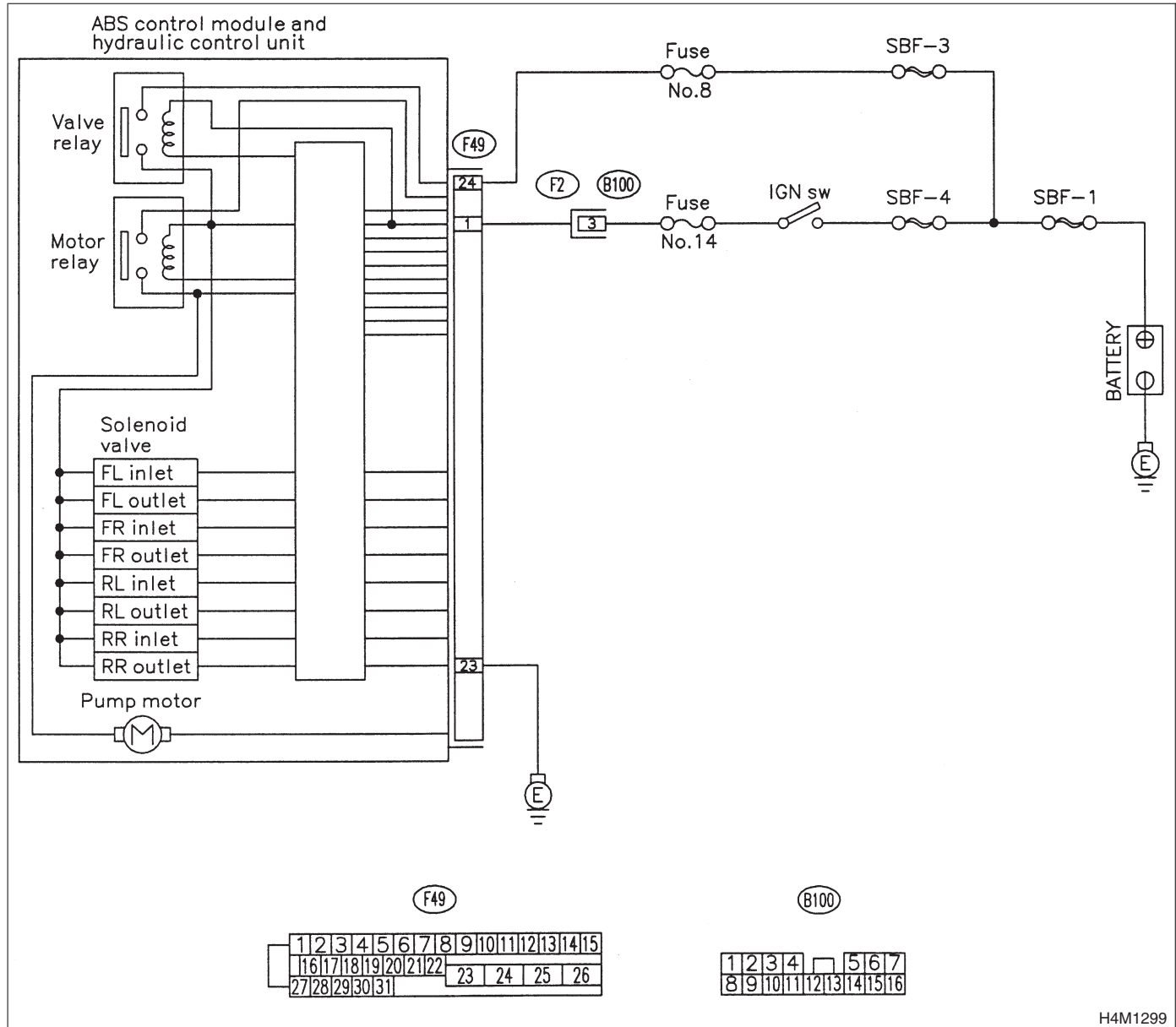
DIAGNOSIS:

- Faulty valve relay

TROUBLE SYMPTOM:

- ABS does not operate.

WIRING DIAGRAM:



H4M1299

DIAGNOSTICS CHART WITH DIAGNOSIS CONNECTOR

ABS

No.	Step	Check	Yes	No
1	CHECK INPUT VOLTAGE OF ABSCM&H/U. 1) Turn ignition switch to OFF. 2) Disconnect connector from ABSCM&H/U. 3) Run the engine at idle. 4) Measure voltage between ABSCM&H/U connector and chassis ground. Connector & terminal (F49) No. 1 (+) — Chassis ground (-): (F49) No. 24 (+) — Chassis ground (-):	Is the voltage between 10 V and 15 V?	Go to step 2.	Repair harness connector between battery and ABSCM&H/U.
2	CHECK GROUND CIRCUIT OF ABSCM&H/U. 1) Turn ignition switch to OFF. 2) Measure resistance between ABSCM&H/U connector and chassis ground. Connector & terminal (F49) No. 23 — Chassis ground:	Is the resistance less than 0.5 Ω?	Go to step 3.	Repair ABSCM&H/U ground harness.
3	CHECK VALVE RELAY IN ABSCM&H/U. Measure resistance between ABSCM&H/U and terminals. Terminals No. 23 (+) — No. 24 (-):	Is the resistance more than 1 MΩ?	Go to step 4.	Replace ABSCM&H/U.
4	CHECK POOR CONTACT IN CONNECTORS.	Is there poor contact in connectors between generator, battery and ABSCM&H/U? <Ref. to EN-6 CAUTION, General Description.>	Repair connector.	Go to step 5.
5	CHECK ABSCM&H/U. 1) Connect all connectors. 2) Erase the memory. 3) Perform inspection mode. 4) Read out the trouble code.	Is the same trouble code as in the current diagnosis still being output?	Replace ABSCM&H/U.	Go to step 6.
6	CHECK ANY OTHER TROUBLE CODES APPEARANCE.	Are other trouble codes being output?	Proceed with the diagnosis corresponding to the trouble code.	A temporary poor contact.

DIAGNOSTICS CHART WITH DIAGNOSIS CONNECTOR

ABS

Y: TROUBLE CODE 52

— ABNORMAL MOTOR AND/OR MOTOR RELAY —

S006522D65

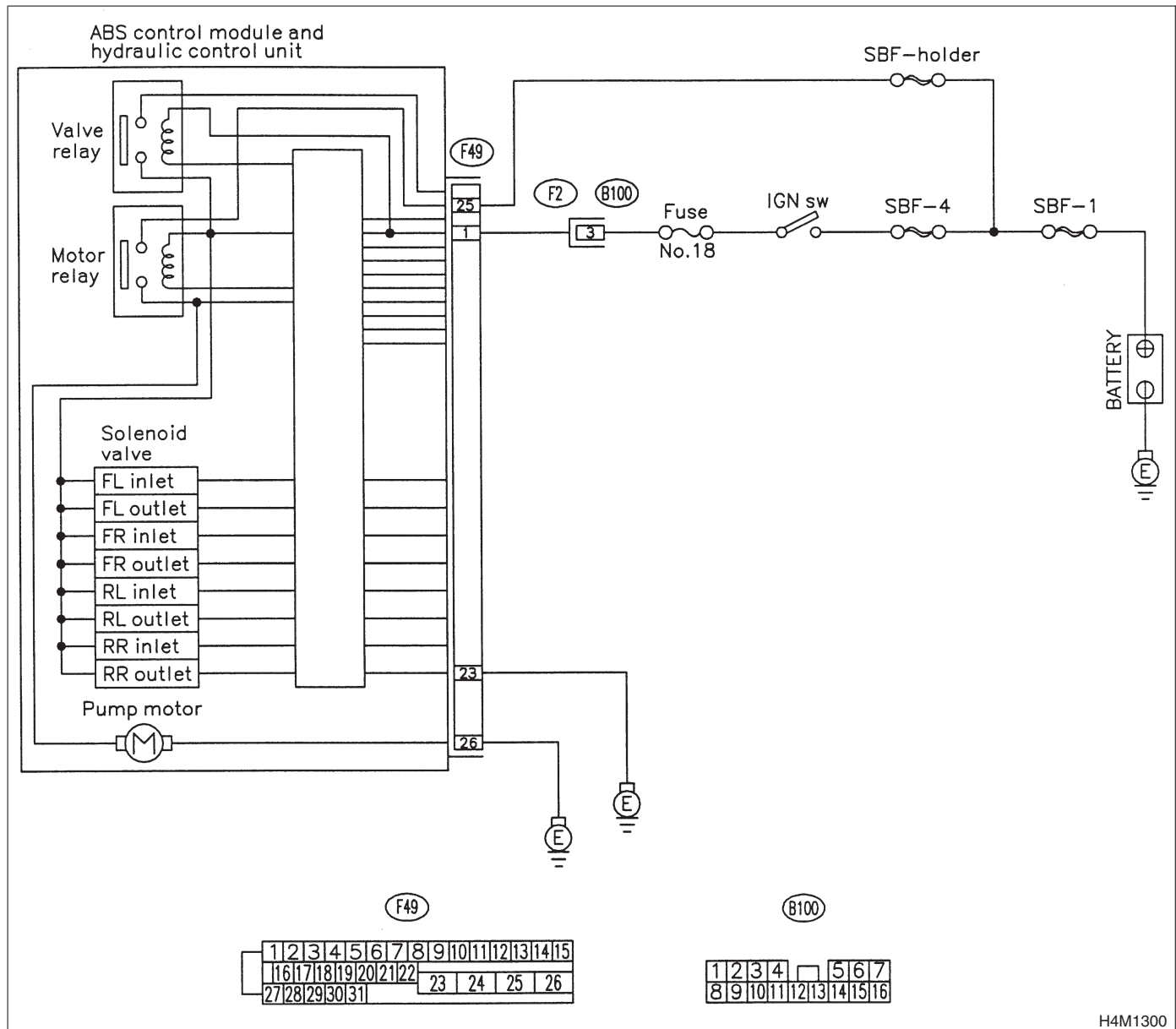
DIAGNOSIS:

- Faulty motor
- Faulty motor relay
- Faulty harness connector

TROUBLE SYMPTOM:

- ABS does not operate.

WIRING DIAGRAM:



H4M1300

DIAGNOSTICS CHART WITH DIAGNOSIS CONNECTOR

ABS

No.	Step	Check	Yes	No
1	CHECK INPUT VOLTAGE OF ABSCM&H/U. 1) Turn ignition switch to OFF. 2) Disconnect connector from ABSCM&H/U. 3) Turn ignition switch to ON. 4) Measure voltage between ABSCM&H/U connector and chassis ground. Connector & terminal (F49) No. 25 (+) — Chassis ground (-):	Is the voltage between 10 V and 15 V?	Go to step 2.	Repair harness/connector between battery and ABSCM&H/U and check fuse SBF-holder.
2	CHECK GROUND CIRCUIT OF MOTOR. 1) Turn ignition switch to OFF. 2) Measure resistance between ABSCM&H/U connector and chassis ground. Connector & terminal (F49) No. 26 — Chassis ground:	Is the resistance less than 0.5 Ω?	Go to step 3.	Repair ABSCM&H/U ground harness.
3	CHECK INPUT VOLTAGE OF ABSCM&H/U. 1) Run the engine at idle. 2) Measure voltage between ABSCM&H/U connector and chassis ground. Connector & terminal (F49) No. 1 (+) — Chassis ground (-):	Is the voltage between 10 V and 15 V?	Go to step 4.	Repair harness connector between battery, ignition switch and ABSCM&H/U.
4	CHECK GROUND CIRCUIT OF ABSCM&H/U. 1) Turn ignition switch to OFF. 2) Measure resistance between ABSCM&H/U connector and chassis ground. Connector & terminal (F49) No. 23 — Chassis ground:	Is the resistance less than 0.5 Ω?	Go to step 5.	Repair ABSCM&H/U ground harness.
5	CHECK MOTOR OPERATION. Operate the sequence control. <Ref. to ABS-10 OPERATION, ABS Sequence Control.> NOTE: Use the diagnosis connector to operate the sequence control.	Can motor revolution noise (buzz) be heard when carrying out the sequence control?	Go to step 6.	Replace ABSCM&H/U.
6	CHECK POOR CONTACT IN CONNECTORS. Turn ignition switch to OFF.	Is there poor contact in connector between generator, battery and ABSCM&H/U? <Ref. to EN-6 CAUTION, General Description.>	Repair connector.	Go to step 7.
7	CHECK ABSCM&H/U. 1) Connect all connectors. 2) Erase the memory. 3) Perform inspection mode. 4) Read out the trouble code.	Is the same trouble code as in the current diagnosis still being output?	Replace ABSCM&H/U.	Go to step 8.
8	CHECK ANY OTHER TROUBLE CODES APPEARANCE.	Are other trouble codes being output?	Proceed with the diagnosis corresponding to the trouble code.	A temporary poor contact.

DIAGNOSTICS CHART WITH DIAGNOSIS CONNECTOR

ABS

Z: TROUBLE CODE 54

— ABNORMAL STOP LIGHT SWITCH —

S006522D72

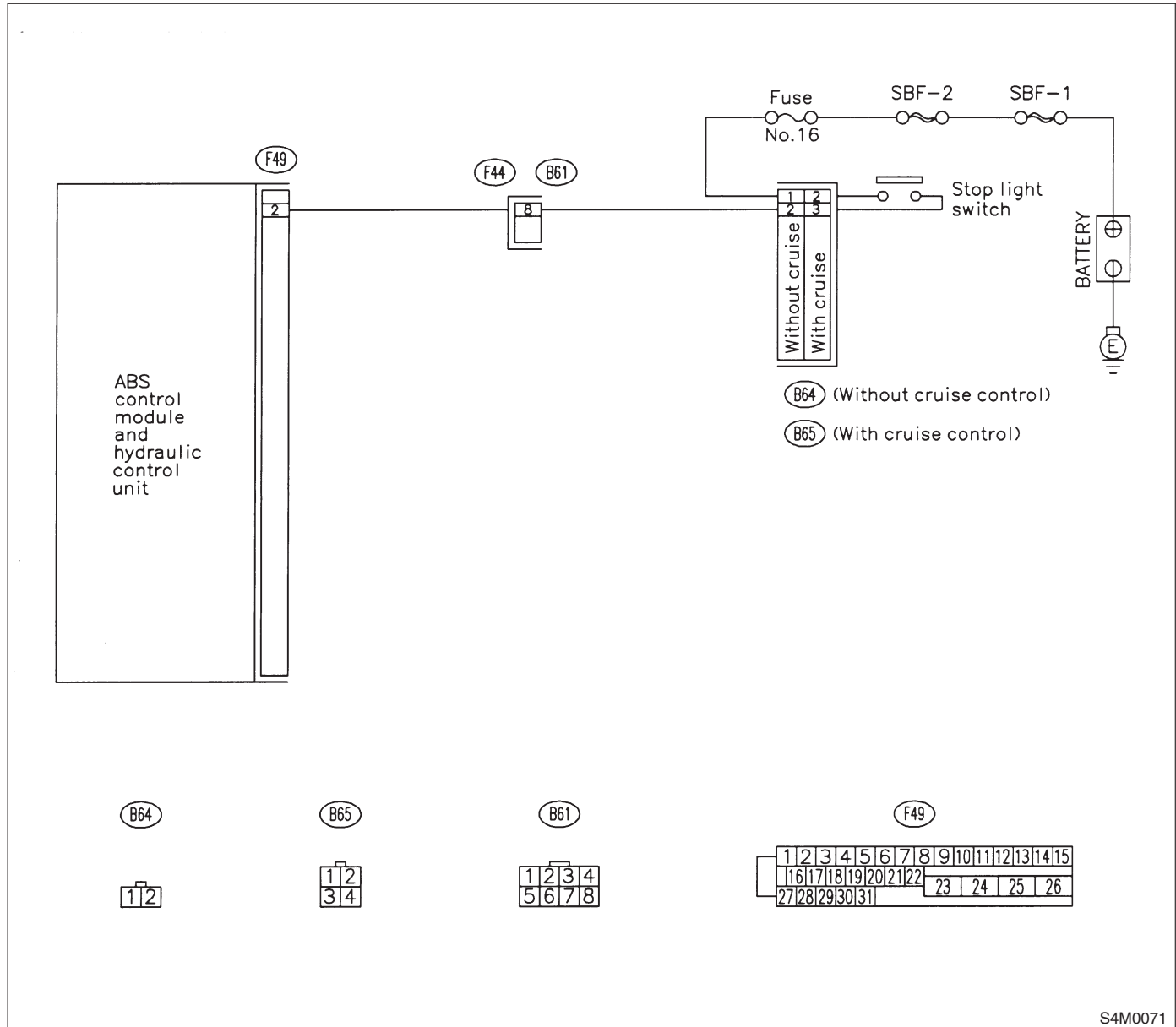
DIAGNOSIS:

- Faulty stop light switch

TROUBLE SYMPTOM:

- ABS does not operate.

WIRING DIAGRAM:



S4M0071

DIAGNOSTICS CHART WITH DIAGNOSIS CONNECTOR

ABS

No.	Step	Check	Yes	No
1	CHECK STOP LIGHTS COME ON. Depress the brake pedal.	Do stop lights come on?	Go to step 2.	Repair stop lights circuit.
2	CHECK OPEN CIRCUIT IN HARNESS. 1) Turn ignition switch to OFF. 2) Disconnect connector from ABSCM&H/U. 3) Depress brake pedal. 4) Measure voltage between ABSCM&H/U connector and chassis ground. Connector & terminal (F49) No. 2 (+) — Chassis ground (-):	Is the voltage between 10 V and 15 V?	Go to step 3.	Repair harness between stop light switch and ABSCM&H/U.
3	CHECK POOR CONTACT IN CONNECTORS.	Is there poor contact in connector between stop light switch and ABSCM&H/U? <Ref. to EN-6 CAUTION, General Description.>	Repair connector.	Go to step 4.
4	CHECK ABSCM&H/U. 1) Connect all connectors. 2) Erase the memory. 3) Perform inspection mode. 4) Read out the trouble code.	Is the same trouble code as in the current diagnosis still being output?	Replace ABSCM&H/U.	Go to step 5.
5	CHECK ANY OTHER TROUBLE CODES APPEARANCE.	Are other trouble codes being output?	Proceed with the diagnosis corresponding to the trouble code.	A temporary poor contact.

DIAGNOSTICS CHART WITH DIAGNOSIS CONNECTOR

ABS

AA: TROUBLE CODE 56

— ABNORMAL G SENSOR OUTPUT VOLTAGE — S006522E77

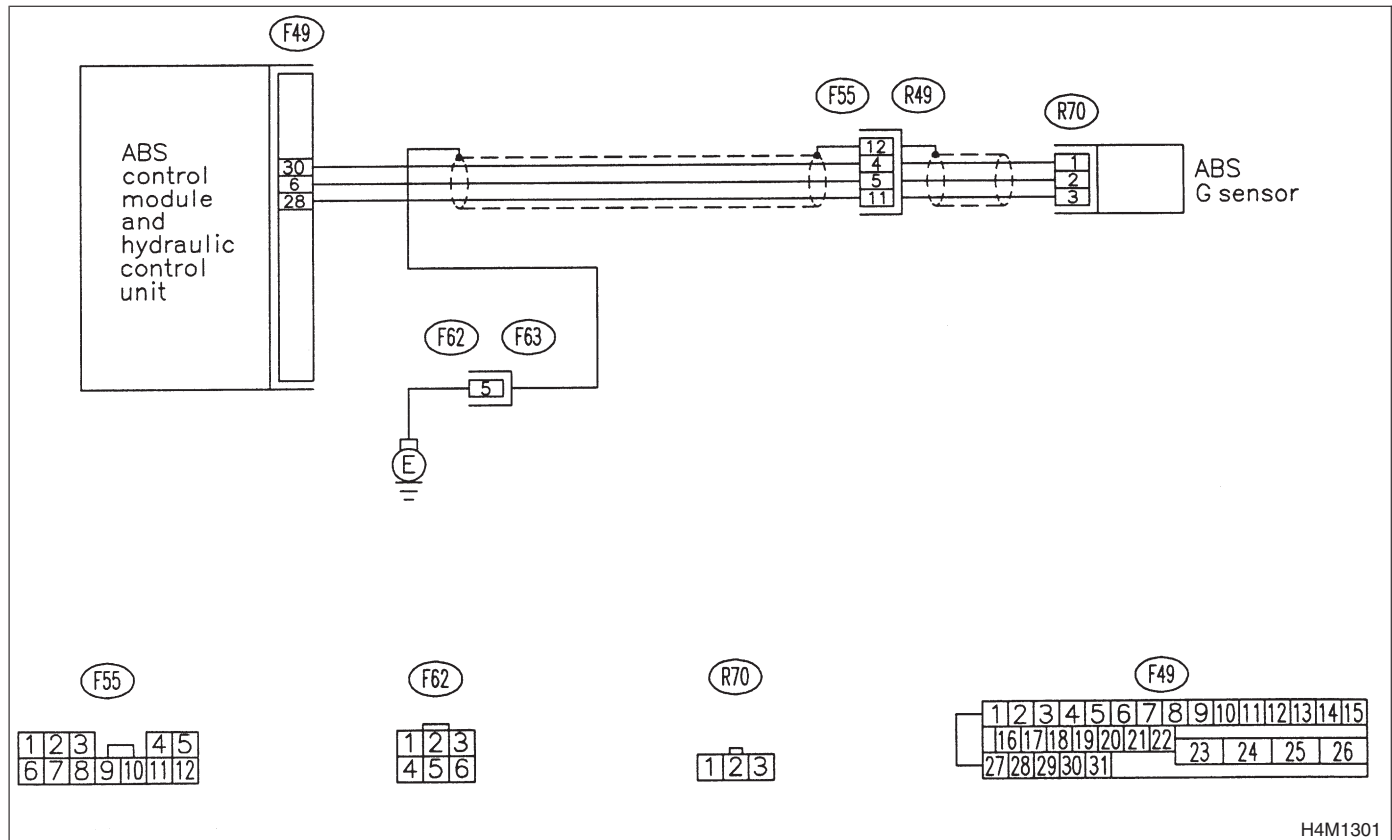
DIAGNOSIS:

- Faulty G sensor output voltage

TROUBLE SYMPTOM:

- ABS does not operate.

WIRING DIAGRAM:



H4M1301

DIAGNOSTICS CHART WITH DIAGNOSIS CONNECTOR

ABS

No.	Step	Check	Yes	No
1	CHECK ALL FOUR WHEELS FOR FREE TURNING.	Have the wheels been turned freely such as when the vehicle is lifted up, or operated on a rolling road?	The ABS is normal. Erase the trouble code.	Go to step 2.
2	CHECK SPECIFICATIONS OF ABSCM&H/U. Check specifications of the mark to the ABSCM&H/U. Mark: C5 Model AWD AT Mark: C6 Model AWD MT	Does the vehicle specification and the ABSCM&H/U specification match?	Replace ABSCM&H/U. CAUTION: Be sure to turn ignition switch to OFF when removing ABSCM&H/U.	Go to step 3.
3	CHECK INPUT VOLTAGE OF G SENSOR. 1) Turn ignition switch to OFF. 2) Remove console box. 3) Disconnect G sensor from body. (Do not disconnect connector.) 4) Turn ignition switch to ON. 5) Measure voltage between G sensor connector terminals. Connector & terminal (R70) No. 1 (+) — No. 3 (-):	Is the voltage between 4.75 and 5.25 V?	Go to step 4.	Repair harness/connector between G sensor and ABSCM&H/U.
4	CHECK OPEN CIRCUIT IN G SENSOR OUTPUT HARNESS AND GROUND HARNESS. 1) Turn ignition switch to OFF. 2) Disconnect connector from ABSCM&H/U. 3) Measure resistance between ABSCM&H/U connector terminals. Connector & terminal (F49) No. 6 — No. 28:	Is the resistance between 4.3 and 4.9 kΩ?	Go to step 5.	Repair harness/connector between G sensor and ABSCM&H/U.
5	CHECK GROUND SHORT IN G SENSOR OUTPUT HARNESS. 1) Disconnect connector from G sensor. 2) Measure resistance between ABSCM&H/U connector and chassis ground. Connector & terminal (F49) No. 6 — Chassis ground:	Is the resistance more than 1 MΩ?	Go to step 6.	Repair harness between G sensor and ABSCM&H/U.
6	CHECK BATTERY SHORT OF HARNESS. Measure voltage between ABSCM&H/U connector and chassis ground. Connector & terminal (F49) No. 6 (+) — Chassis ground (-):	Is the voltage less than 1 V?	Go to step 7.	Repair harness between G sensor and ABSCM&H/U.
7	CHECK BATTERY SHORT OF HARNESS. 1) Turn ignition switch to ON. 2) Measure voltage between ABSCM&H/U connector and chassis ground. Connector & terminal (F49) No. 6 (+) — Chassis ground (-):	Is the voltage less than 1 V?	Go to step 8.	Repair harness between G sensor and ABSCM&H/U.
8	CHECK GROUND SHORT OF HARNESS. Measure resistance between ABSCM&H/U connector and chassis ground. Connector & terminal (F49) No. 28 — Chassis ground:	Is the resistance more than 1 MΩ?	Go to step 9.	Repair harness between G sensor and ABSCM&H/U. Replace ABSCM&H/U.

DIAGNOSTICS CHART WITH DIAGNOSIS CONNECTOR

ABS

No.	Step	Check	Yes	No
9	CHECK G SENSOR. 1) Turn ignition switch to OFF. 2) Remove G sensor from vehicle. 3) Connect connector to G sensor. 4) Connect connector to ABSCM&H/U. 5) Turn ignition switch to ON. 6) Measure voltage between G sensor connector terminals. Connector & terminal (R70) No. 2 (+) — No. 3 (-):	Is the voltage between 2.1 and 2.5 V when G sensor is horizontal?	Go to step 10.	Replace G sensor.
10	CHECK G SENSOR. Measure voltage between G sensor connector terminals. Connector & terminal (R70) No. 2 (+) — No. 3 (-):	Is the voltage between 3.7 and 4.1 V when G sensor is inclined forwards to 90°?	Go to step 11.	Replace G sensor.
11	CHECK G SENSOR. Measure voltage between G sensor connector terminals. Connector & terminal (R70) No. 2 (+) — No. 3 (-):	Is the voltage between 0.5 and 0.9 V when G sensor is inclined backwards to 90°?	Go to step 12.	Replace G sensor.
12	CHECK POOR CONTACT IN CONNECTORS.	Is there poor contact in connector between ABSCM&H/U and G sensor? <Ref. to EN-6 CAUTION, General Description.>	Repair connector.	Go to step 13.
13	CHECK ABSCM&H/U. 1) Connect all connectors. 2) Erase the memory. 3) Perform inspection mode. 4) Read out the trouble code.	Is the same trouble code as in the current diagnosis still being output?	Replace ABSCM&H/U.	Go to step 14.
14	CHECK ANY OTHER TROUBLE CODES APPEARANCE.	Are other trouble codes being output?	Proceed with the diagnosis corresponding to the trouble code.	A temporary poor contact.

AB: SELECT MONITOR S006522E48

Applicable cartridge of select monitor: No. 24082AA130

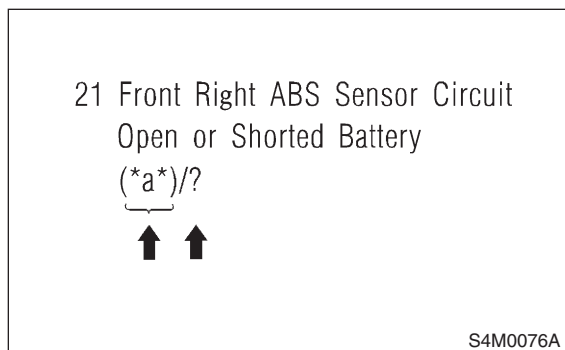
NOTE:

For basic handling of the select monitor, refer to its Operation Manual.

AC: TROUBLE CODES ARE DISPLAYED. S006522E51

A maximum of 3 trouble codes are displayed in order of occurrence.

- If a particular trouble code is not properly stored in memory (due to a drop in ABSCM&H/U power supply, etc.) when a problem occurs, the trouble code, followed by a question mark "?", appears on the select monitor display. This shows it may be an unreliable reading.



- *a* refers to the troubles in order of occurrence (Latest, Old, Older and Reference).

Display screen	Contents to be monitored
Latest	The most recent trouble code appears on the select monitor display.
Old	The second most recent trouble code appears on the select monitor display.
Older	The third most recent trouble code appears on the select monitor display.
Reference	A specified period of time proceeding trouble code appears on the select monitor display.

AD: CLEAR MEMORY S006522E33

Display screen	Contents to be monitored
Clear memory?	Function of clearing trouble code and freeze frame data.

AE: ANALOG DATA ARE DISPLAYED. S006522E29

Display screen	Contents to be monitored
FR wheel speed	Wheel speed detected by the Front Right ABS sensor is displayed in km/h or mile/h.
FL wheel speed	Wheel speed detected by the Front Left ABS sensor is displayed in km/h or mile/h.
RR wheel speed	Wheel speed detected by the Rear Right ABS sensor is displayed in km/h or mile/h.
RL wheel speed	Wheel speed detected by the Rear Left ABS sensor is displayed in km/h or mile/h.
Stop light switch	Stop light switch monitor voltage is displayed.
G sensor output voltage	Refers to vehicle acceleration detecting by the analog G sensor. It appears on the select monitor display in volts.

AF: ON/OFF DATA ARE DISPLAYED. S006522E43

Display screen	Contents to be monitored
Stop light switch	Stop light switch signal
Valve relay signal	Valve relay signal
Motor relay signal	Motor relay signal
ABS signal to TCM	ABS operation signal from ABS control module to TCM
ABS warning light	ABS warning light
Valve relay monitor	Valve relay operation monitor signal
Motor relay monitor	Motor relay operation monitor signal
CCM signal	ABS operation signal from ABS control module to TCM

AG: ABS SEQUENCE CONTROL S006522E23

Display screen	Contents to be monitored	Index No.
ABS sequence control	Perform ABS sequence control by operating valve and pump motor sequentially.	<Ref. to ABS-10 OPERATION, ABS Sequence Control.>

AH: FREEZE FRAME DATA S006522E39

NOTE:

- Data stored at the time of trouble occurrence is shown on display.
- Each time trouble occurs, the latest information is stored in the freeze frame data in memory.
- If freeze frame data is not properly stored in memory (due to a drop in ABSCM power supply, etc.), a freeze frame data, preceded by a question mark "?", appears on the select monitor display. This shows it may be an unreliable reading. The value of the freeze frame data will be written over, and the memory cannot be cleared.

Display screen	Contents to be monitored
FR wheel speed	Wheel speed detected by the Front Right ABS sensor is displayed in km/h or mile/h.
FL wheel speed	Wheel speed detected by the Front Left ABS sensor is displayed in km/h or mile/h.
RR wheel speed	Wheel speed detected by the Rear Right ABS sensor is displayed in km/h or mile/h.
RL wheel speed	Wheel speed detected by the Rear Left ABS sensor is displayed in km/h or mile/h.
ABSCM power voltage	Power (in volts) supplied to ABSCM&H/U appears on the select monitor display.
G sensor output voltage	Refers to vehicle acceleration detected by the analog G sensor. It appears on the select monitor display in volts.
Motor relay monitor	Motor relay operation monitor signal
Stop light switch	Stop light switch signal
ABS signal to TCM	ABS operation signal from ABS control module to TCM (Output signal)
ABS-AT control	ABS operation signal from ABS control module to TCM (ABS operation signal monitor)
ABS operation signal	ABS operation signal

MEMO: