

1. Basic Diagnostic Procedure

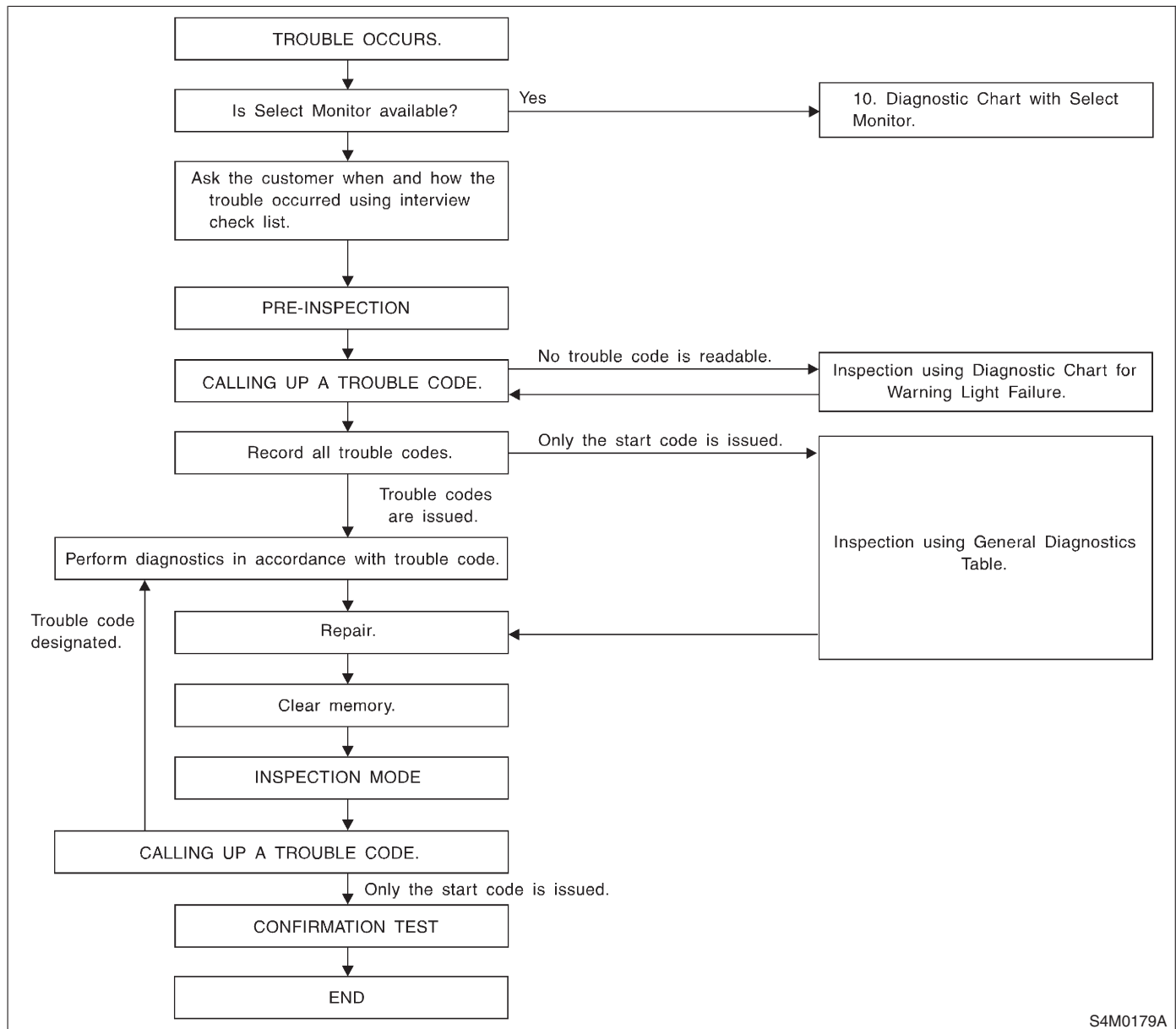
S006501

A: PROCEDURE

S006501E45

1. WITHOUT SUBARU SELECT MONITOR

S006501E4501



S4M0179A

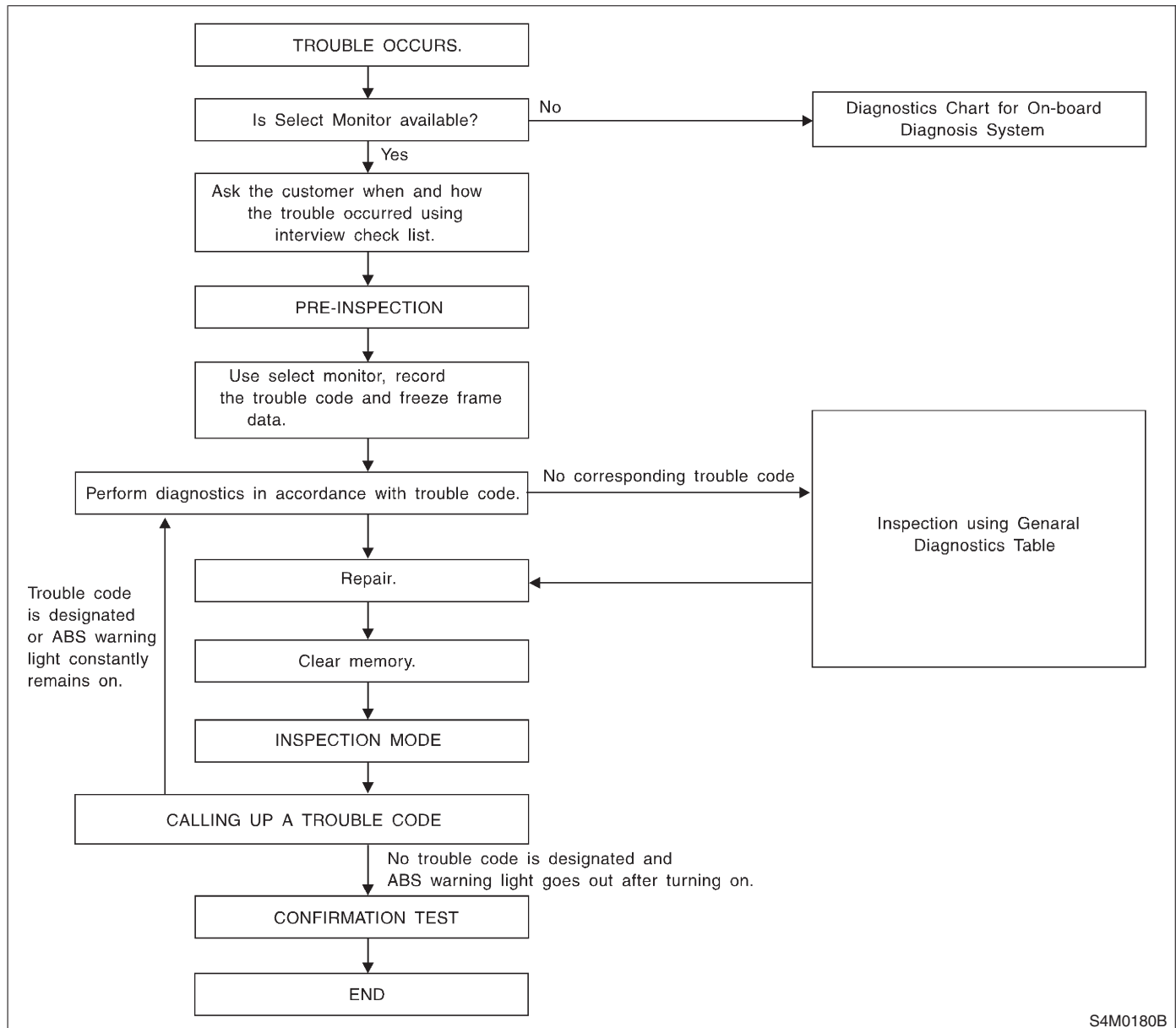
CAUTION:

Remove foreign matter (dust, water, etc.) from the ABSCM&H/U connector during removal and installation.

NOTE:

- To check harness for broken wires or short circuits, shake it while holding it or the connector.
- When ABS warning light illuminates, read and record trouble code indicated by ABS warning light.

2. WITH SUBARU SELECT MONITOR S006501E4502



CAUTION:

Remove foreign matter (dust, water, etc.) from the ABSCM&H/U connector during removal and installation.

NOTE:

- To check harness for broken wires or short circuits, shake it while holding it or the connector.
- Check list for interview. <Ref. to ABS-4 CHECK, Check List for Interview.>