

8. Rear Wiper Motor

S902532

A: REMOVAL

S902532A18

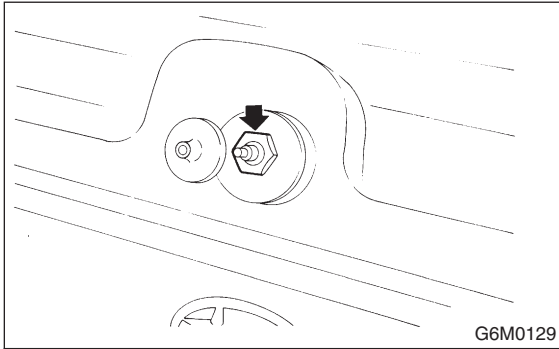
- 1) Remove cap and special nut.

CAUTION:

Be careful not to strike service tool against nozzle during removal.

Tightening torque:

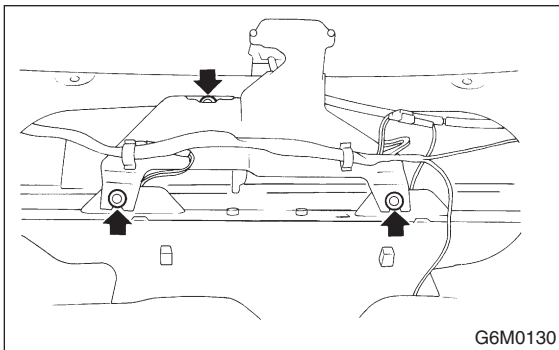
7.4 N·m (0.75 kgf-m, 5.4 ft-lb)



- 2) Remove rear gate trim. <Ref. to EI-32 REMOVAL, Rear Gate Trim.>
- 3) Undo clips which secure harness, and disconnect connector of wiper motor.
- 4) Separate washer hoses at joint.
- 5) Remove attaching screws and take out wiper motor assembly.

CAUTION:

Be careful not to damage O-ring when removing wiper motor assembly.



B: INSTALLATION

S902532A11

Install in the reverse order of removal.

Tightening torque:

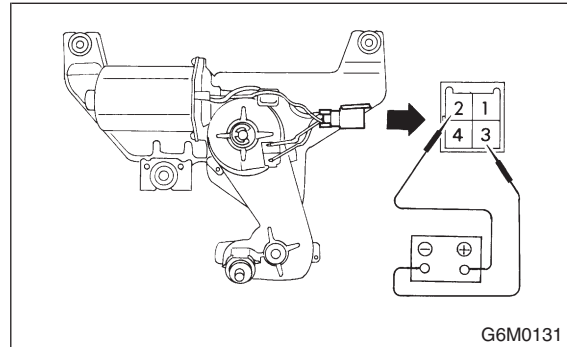
5.9 N·m (0.6 kgf-m, 4.3 ft-lb)

C: INSPECTION

S902532A10

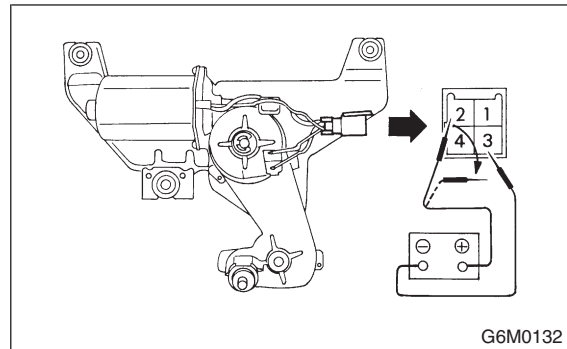
- 1) Operational check:

Connect battery to wiper motor and check operation of wiper motor.



- 2) Check wiper motor for proper stoppage:

After operating wiper motor, disconnect battery from wiper motor.



- 3) Reconnect battery and ensure that wiper motor stops at "AUTO STOP" after it has been operated.

