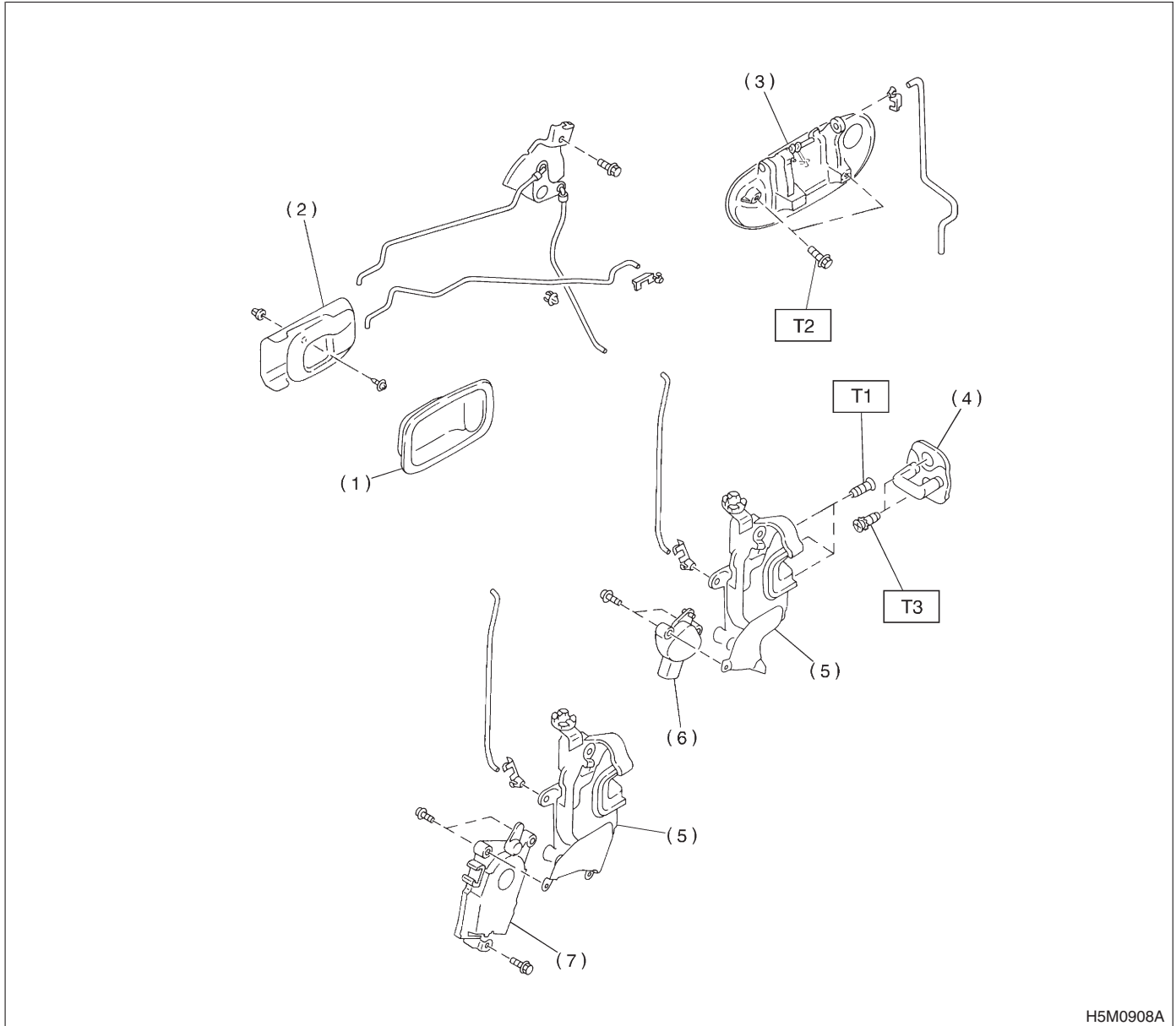


1. General Description S909001

A: COMPONENT S909001A05

1. FRONT DOOR LOCK ASSEMBLY S909001A0506



- | | |
|-----------------------|-----------------------------|
| (1) Cover | (6) Switch ASSY |
| (2) Inner remote ASSY | (7) Auto-door lock actuator |
| (3) Door outer handle | |
| (4) Striker | |
| (5) Door latch | |

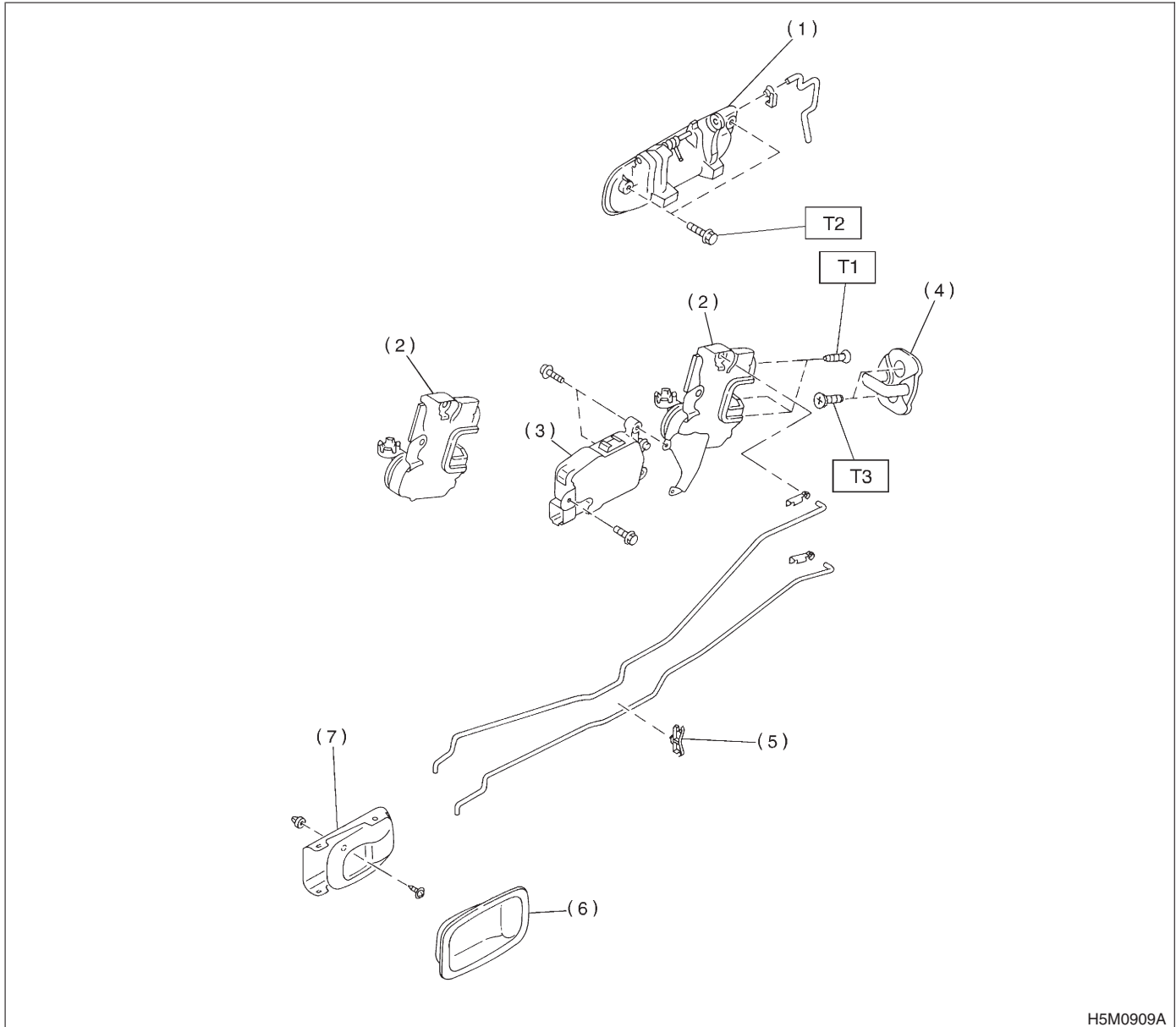
Tightening torque: N·m (kgf-m, ft-lb)

T1: 6.4 (0.65, 4.7)

T2: 7.4 (0.75, 5.4)

T3: 14 (1.4, 10.1)

2. REAR DOOR LOCK ASSEMBLY S909001A0507



- | | |
|-----------------------------|-----------------------|
| (1) Door outer handle | (6) Cover |
| (2) Door latch | (7) Inner remote ASSY |
| (3) Auto-door lock actuator | |
| (4) Striker | |
| (5) Rod holder | |

Tightening torque: N·m (kgf-m, ft-lb)

T1: 6.4 (0.65, 4.7)

T2: 7.4 (0.75, 5.4)

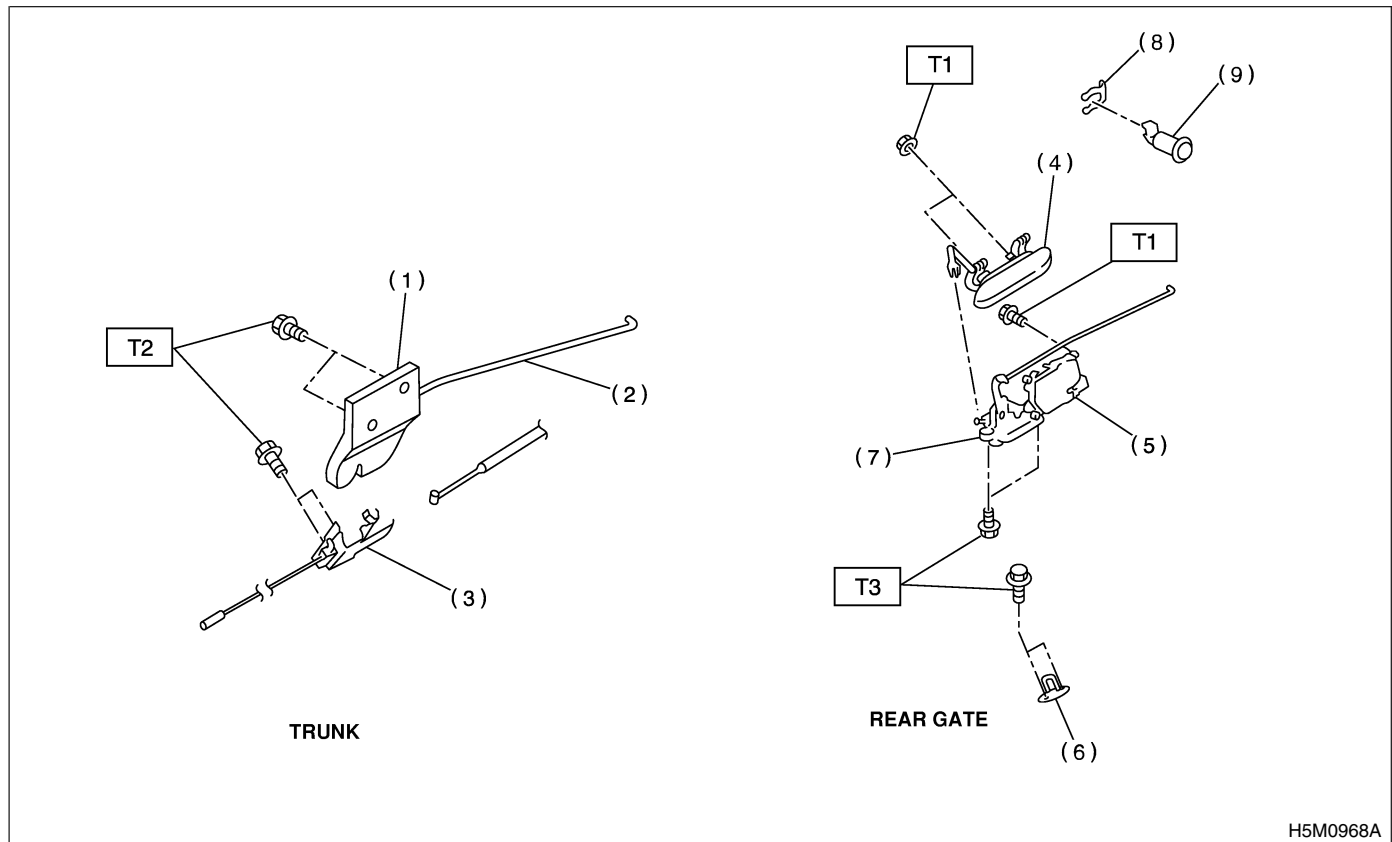
T3: 14 (1.4, 10.1)

GENERAL DESCRIPTION

Security and Locks

3. TRUNK LID AND REAR GATE LOCK

S909001A0502



H5M0968A

- (1) Trunk lid lock ASSY
- (2) Rod
- (3) Striker
- (4) Outer handle
- (5) Auto-door lock actuator

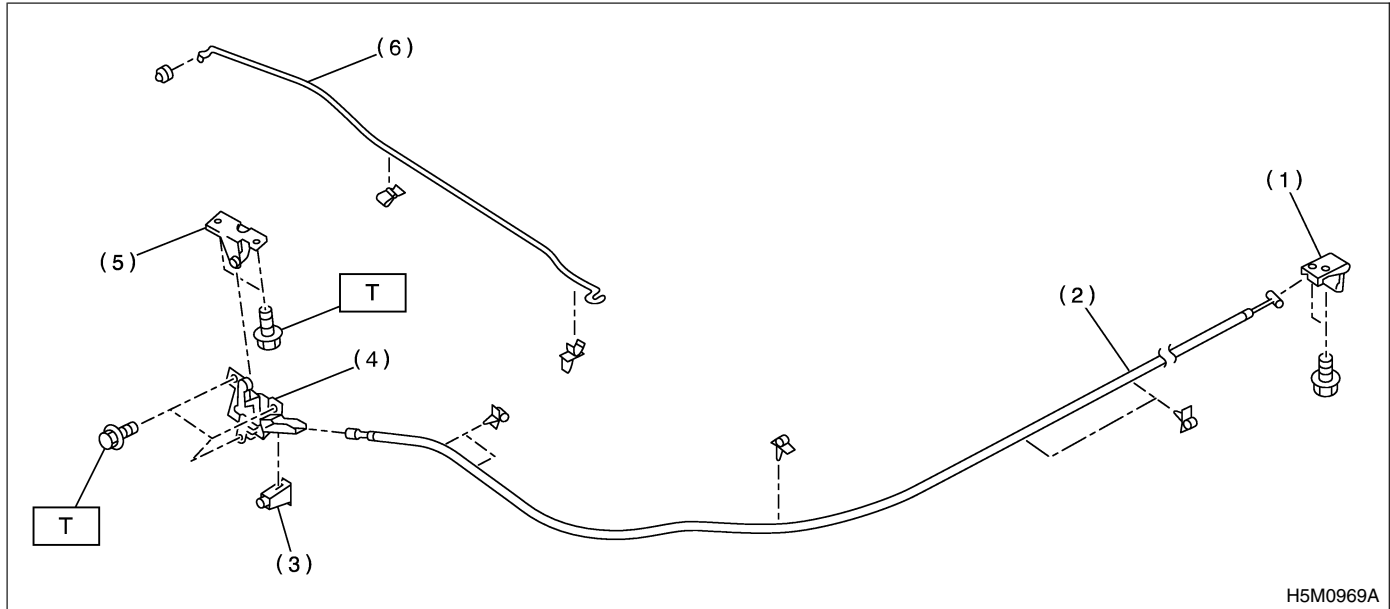
- (6) Striker
- (7) Latch
- (8) Clip
- (9) Key cylinder

Tightening torque: N·m (kgf-m, ft-lb)

T1: 7.4 (0.75, 5.4)

T2: 18 (1.8, 13.0)

T3: 25 (2.5, 18.1)

4. HOOD LOCK S909001A0508

H5M0969A

- | | |
|----------------|---------------------|
| (1) Lever ASSY | (4) Hood lock ASSY |
| (2) Cable | (5) Striker |
| (3) Stopper | (6) Front hood stay |

Tightening torque: N·m (kgf-m, ft-lb)
T: 32 (3.3, 23.9)

B: CAUTION S909001A03

- Before disassembling or reassembling parts, always disconnect battery ground cable. When repairing radio, control module, etc. which are provided with memory functions, record memory contents before disconnecting battery ground cable. Otherwise, these contents are cancelled upon disconnection.
- Reassemble parts in reverse order of disassembly procedure unless otherwise indicated.
- Adjust parts to specifications contained in this manual if so designated.
- Connect connectors and hoses securely during reassembly.
- After reassembly, ensure functional parts operate smoothly.
- Airbag system wiring harness is routed near the electrical parts and switch.
- All airbag system wiring harness and connectors are colored yellow. Do not use electrical test equipment on these circuits.
- Be careful not to damage Airbag system wiring harness when servicing the ignition key cylinder.

Security and Locks

1. SPECIAL TOOL *S909001A1701*

2. GENERAL TOOL S909001A1702

SL-6