

1. General Description

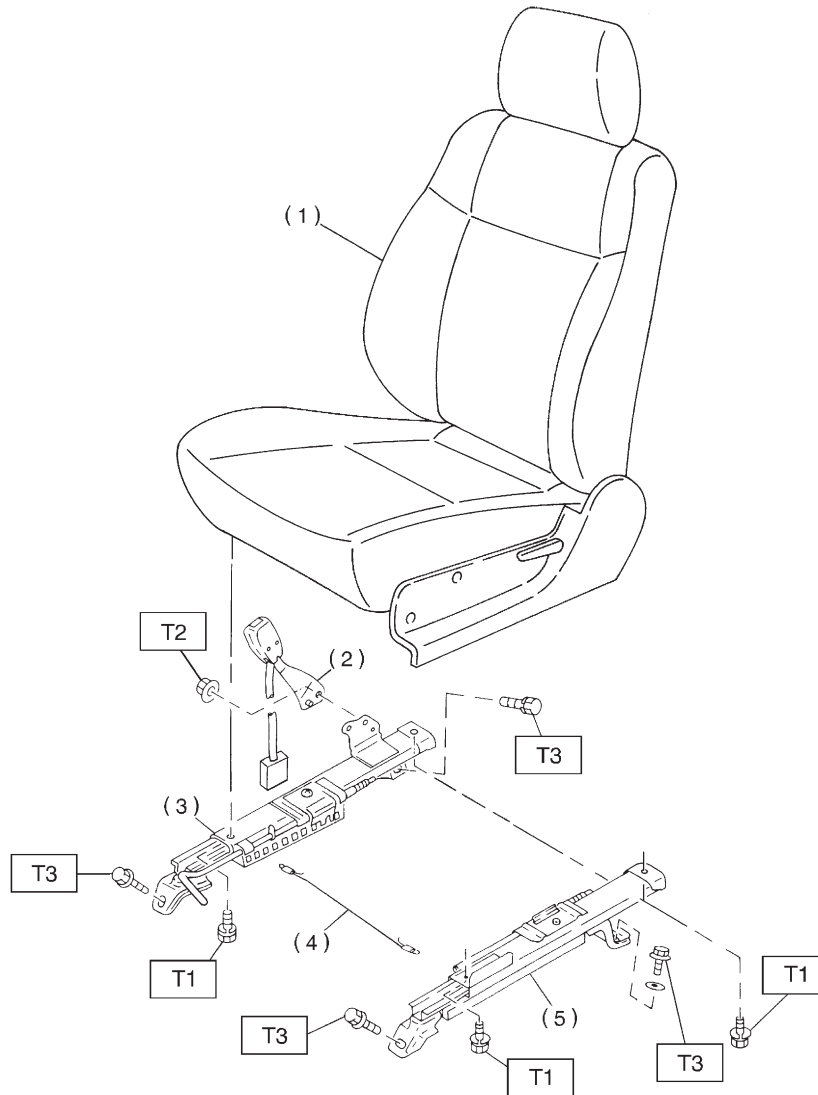
S908001

A: COMPONENT

S908001A05

1. FRONT SEAT

S908001A0501



H5M0701B

- (1) Front seat ASSY
- (2) Inner belt ASSY
- (3) Inner slide rail ASSY
- (4) Connect wire

- (5) Outer slide rail ASSY

Tightening torque: N·m (kgf-m, ft-lb)

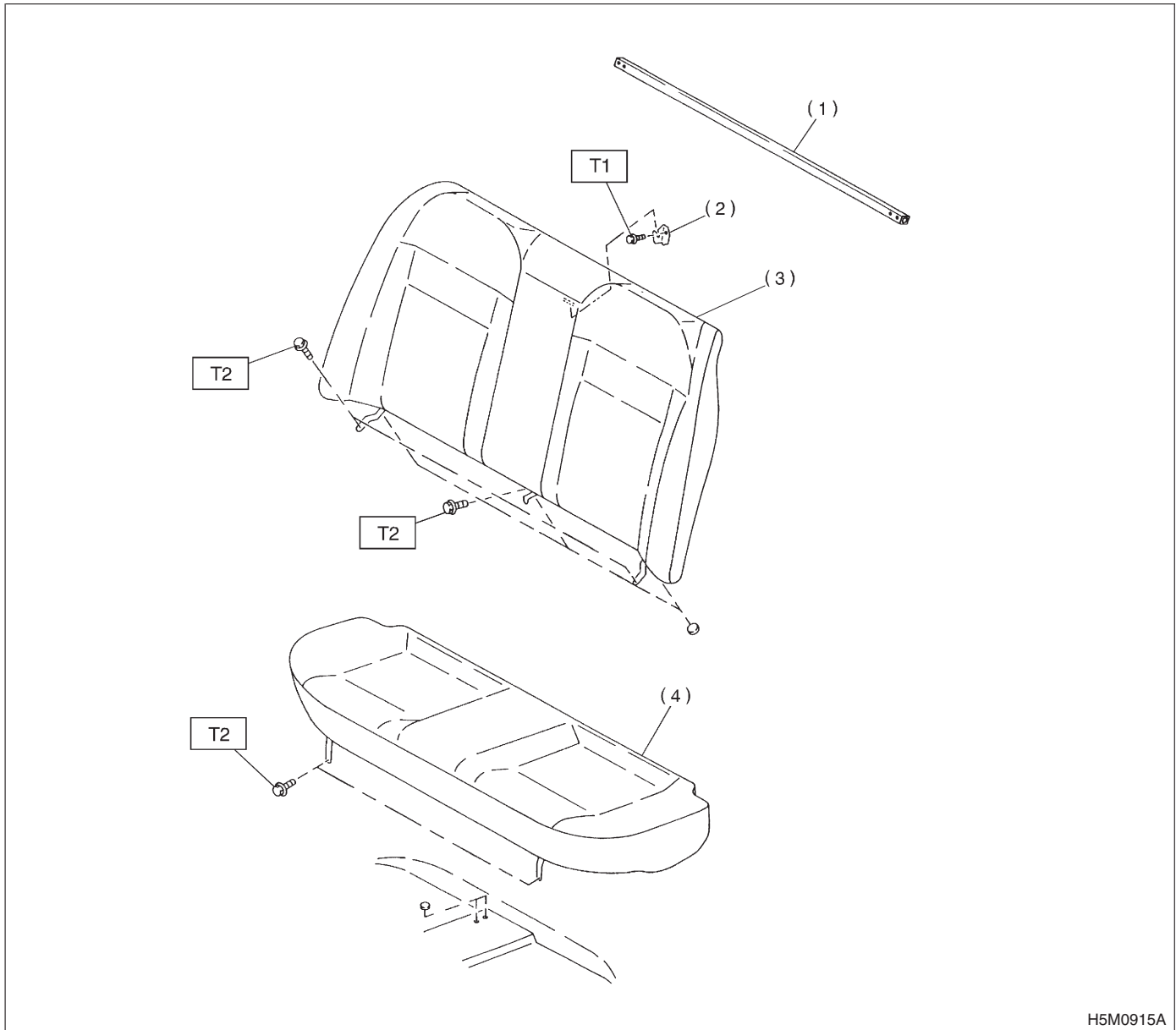
T1: 23 (2.3, 16.6)

T2: 29 (3.0, 21.7)

T3: 52 (5.3, 38)

2. REAR SEAT (SEDAN AND COUPE)

S908001A0504



- (1) Rear seat reinforcement
- (2) Hook
- (3) Backrest

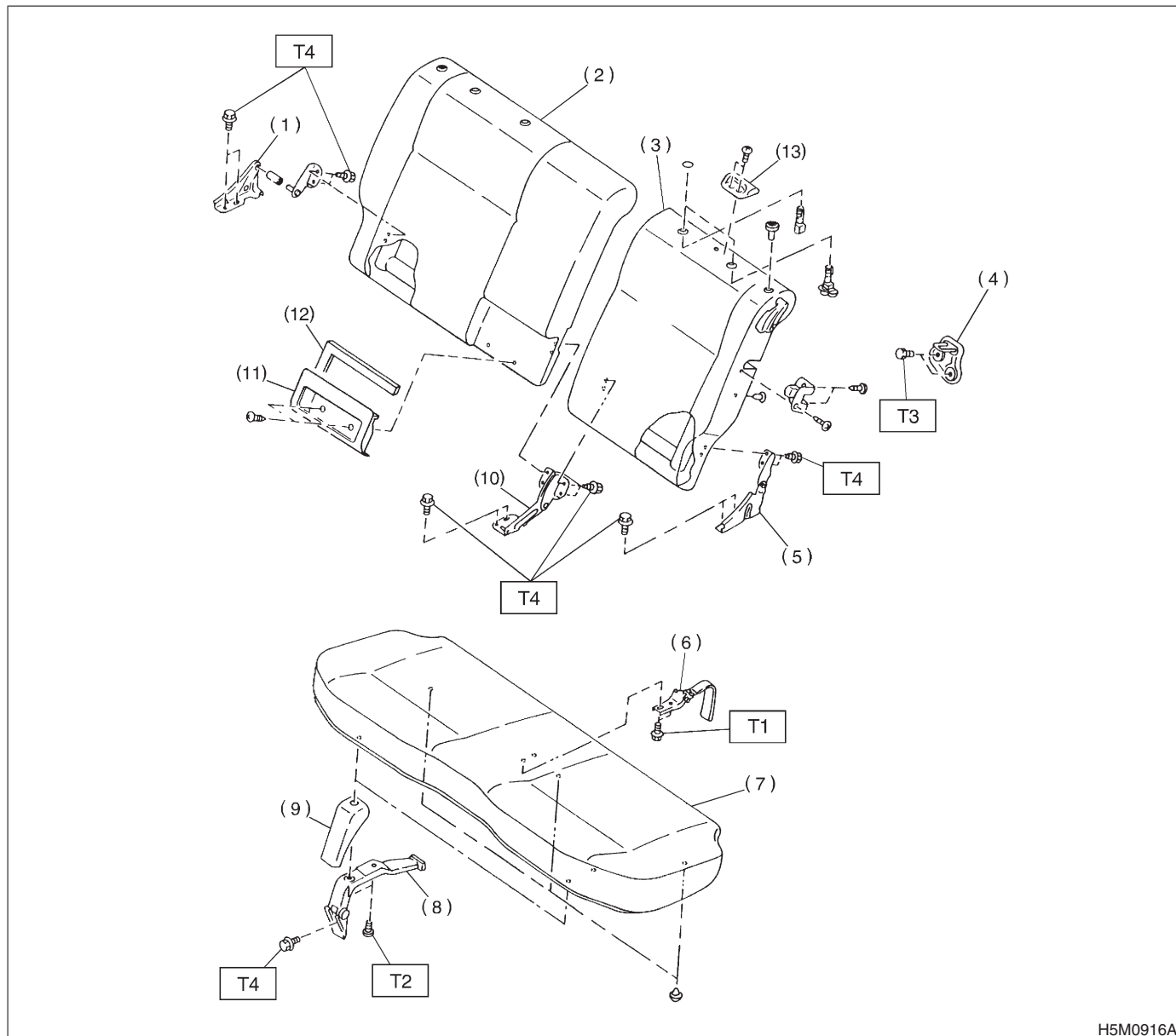
- (4) Rear cushion

Tightening torque: N·m (kgf-m, ft-lb)

T1: 10 (1.0, 7.2)

T2: 25 (2.5, 18.1)

3. REAR SEAT (WAGON) S908001A0503



H5M0916A

- | | |
|------------------------|----------------------------|
| (1) Hinge bracket (RH) | (8) Hinge |
| (2) Hinge bracket (RH) | (9) Hinge cover |
| (3) Backrest (LH) | (10) Backrest center hinge |
| (4) Striker | (11) Belt pocket |
| (5) Hinge bracket (LH) | (12) Pad ASSY pocket |
| (6) Lock hinge | (13) Hook |
| (7) Rear cushion | |

Tightening torque: N·m (kgf-m, ft-lb)

T1: 2 (0.2, 1.4)

T2: 5.9 (0.6, 4.3)

T3: 10 (1.0, 7.2)

T4: 25 (2.5, 18.1)

B: CAUTION S908001A03

- Take care not to contaminate or damage seat surface.
- While loading to or unloading to vehicle, take care not to contact body.
- When removing front seat from a side airbag loaded vehicle, follow cautions given in the airbag section.