

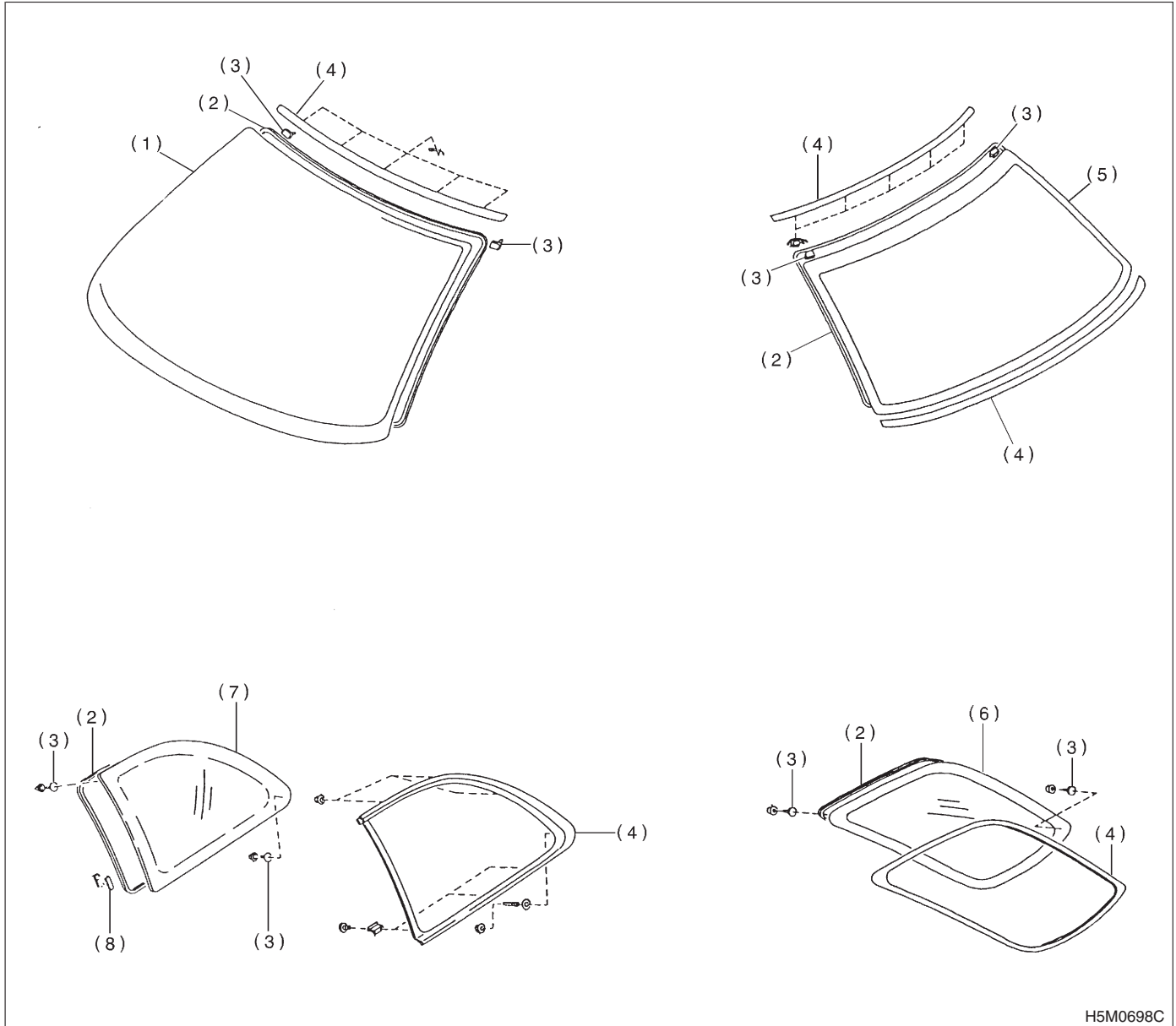
GENERAL DESCRIPTION

Glass/Windows/Mirrors

1. General Description S905001

A: COMPONENT S905001A05

1. FIXED GLASS S905001A0506



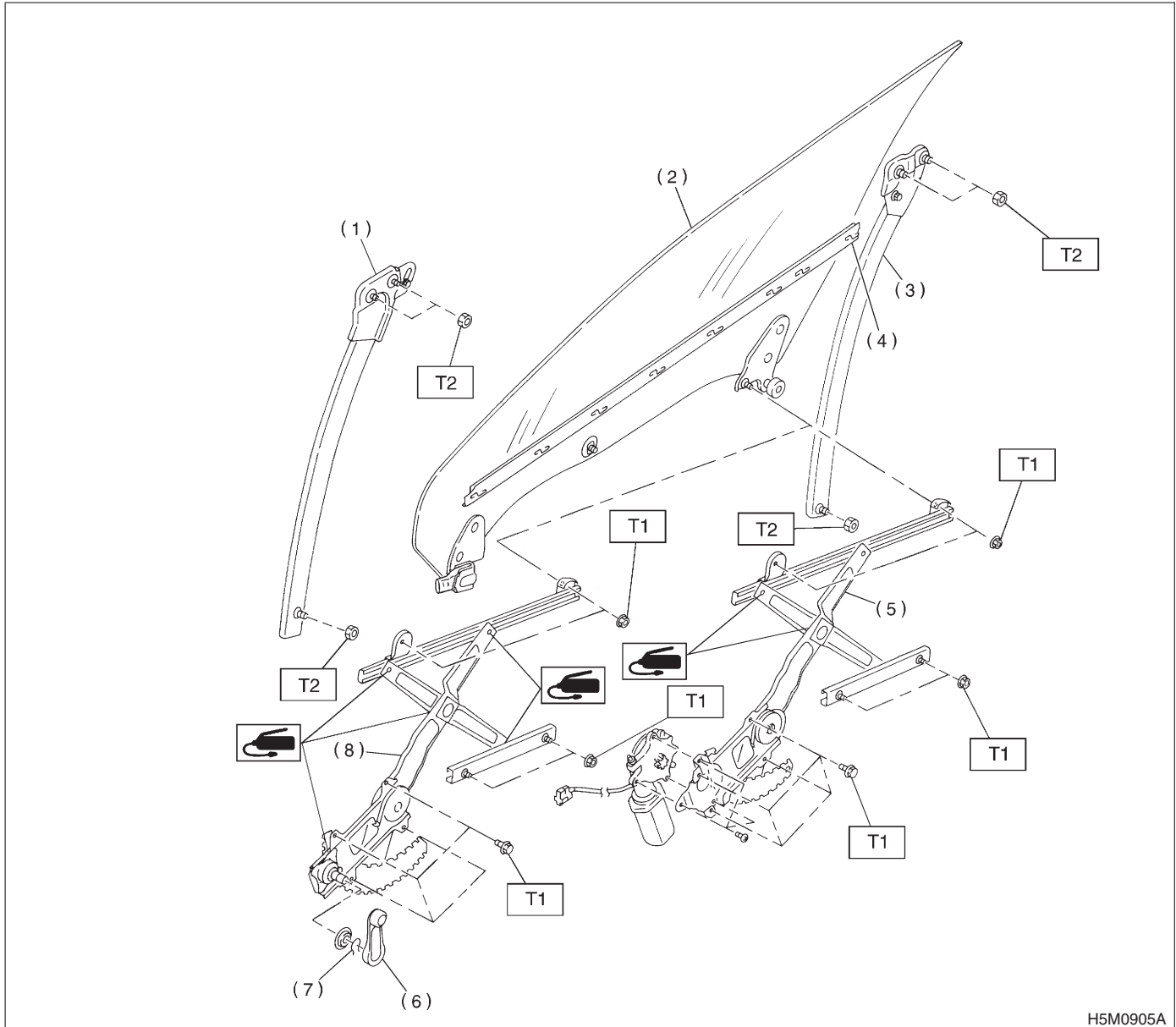
H5M0698C

- (1) Windshield glass
- (2) Dam rubber
- (3) Locate pin

- (4) Molding
- (5) Rear window glass
- (6) Rear quarter glass (Wagon)

- (7) Rear quarter glass (Coupe)
- (8) Fastener

2. FRONT DOOR GLASS S905001A0503



- | | |
|------------------------------|---|
| (1) Door sash (Front) | (6) Regulator handle
(Except power window) |
| (2) Glass | (7) Retainer spring |
| (3) Door sash (Rear) | (8) Regulator ASSY |
| (4) Weatherstrip (Inner) | |
| (5) Regulator and motor ASSY | |

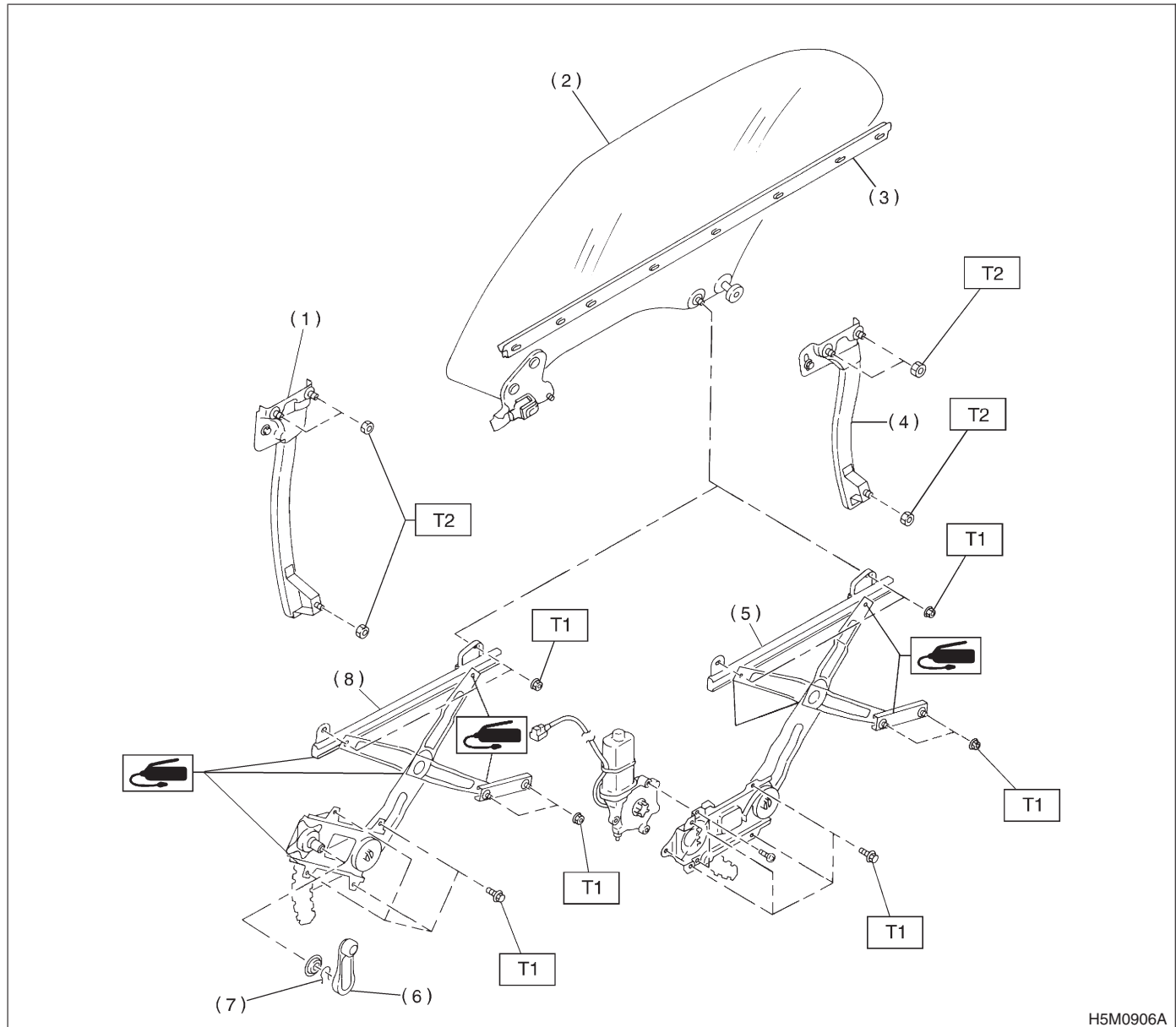
Tightening torque: N·m (kgf-m, ft-lb)

T1: 7.4 (0.75, 5.4)

T2: 14 (1.4, 10.1)

GENERAL DESCRIPTION

3. REAR DOOR GLASS S905001A0504



- | | |
|------------------------------|---|
| (1) Door sash (Front) | (6) Regulator handle
(Except power window) |
| (2) Glass | (7) Retainer spring |
| (3) Weatherstrip (Inner) | (8) Regulator ASSY |
| (4) Door sash (Rear) | |
| (5) Regulator and motor ASSY | |

Tightening torque: N·m (kgf-m, ft-lb)

T1: 7.4 (0.75, 5.4)

T2: 14 (1.4, 10.1)

B: CAUTION S905001A03

- When electrical connectors are disconnected, always conduct an operational check after connecting them again.
- Avoid impact and damage to the glass.

C: PREPARATION TOOL S905001A17**1. GENERAL TOOL** S905001A1701

TOOL NAME	REMARKS
Circuit Tester	Used for measuring resistance, voltage and ampere.
Piano Wire	Used for window glass removal.
Windshield Knife	Used for window glass removal.