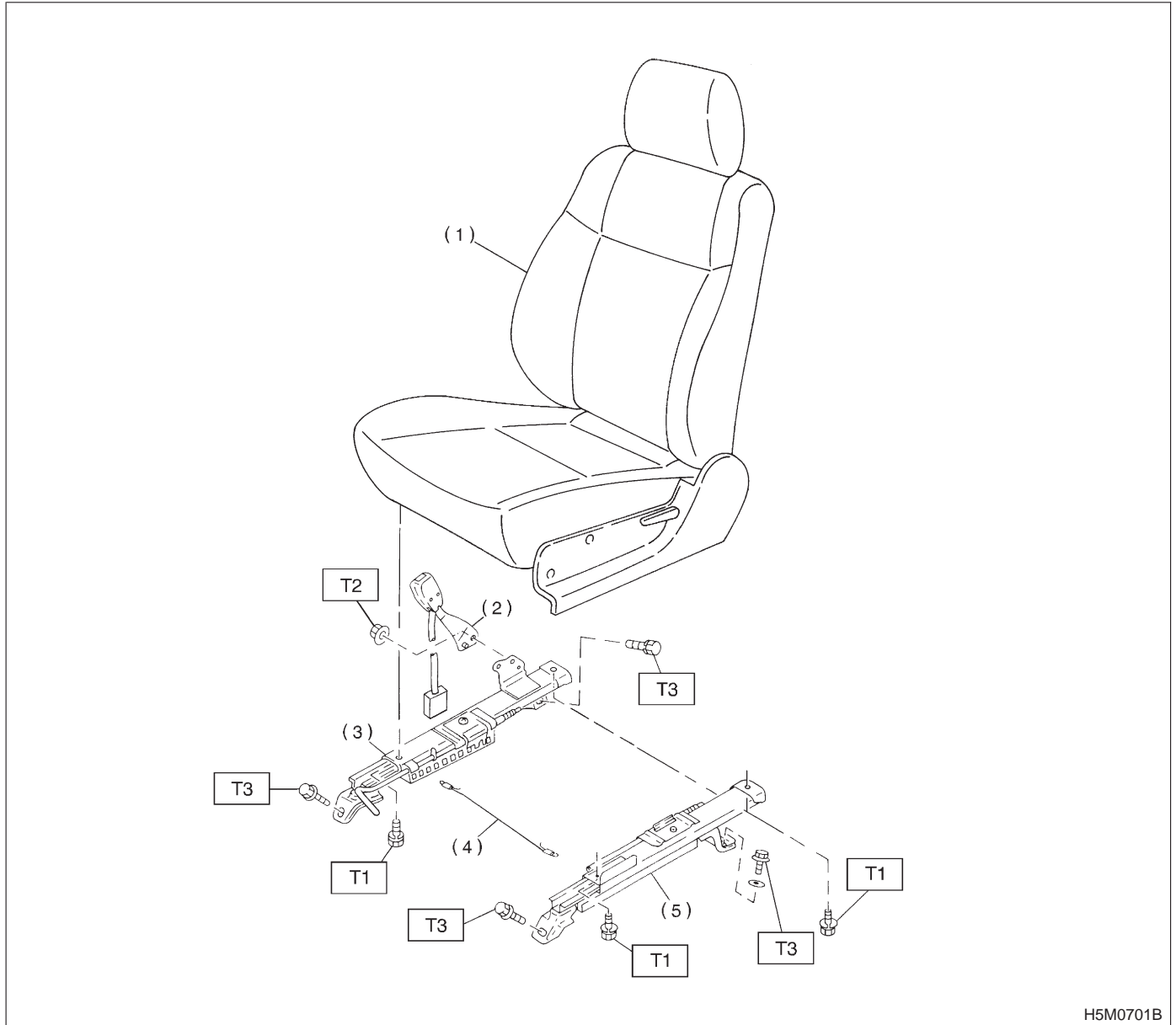


SEAT, SEAT BELTS AND INTERIOR

5-3

	Page
C COMPONENT PARTS	2
1. Front Seat.....	2
2. Rear Seat	3
3. Front Seat Belt	5
4. Rear Seat Belt.....	6
5. Inner Accessories	7
6. Inner Trim	8
W SERVICE PROCEDURE	9
1. Front Seat.....	9
2. Rear Seat	10
3. Front Seat Belt	12
4. Rear Seat Belt.....	13
5. Inner Trim Panel.....	15

1. Front Seat



H5M0701B

- (1) Front seat ASSY
- (2) Inner belt ASSY
- (3) Inner slide rail ASSY
- (4) Connect wire

- (5) Outer slide rail ASSY

Tightening torque: N·m (kg·m, ft·lb)

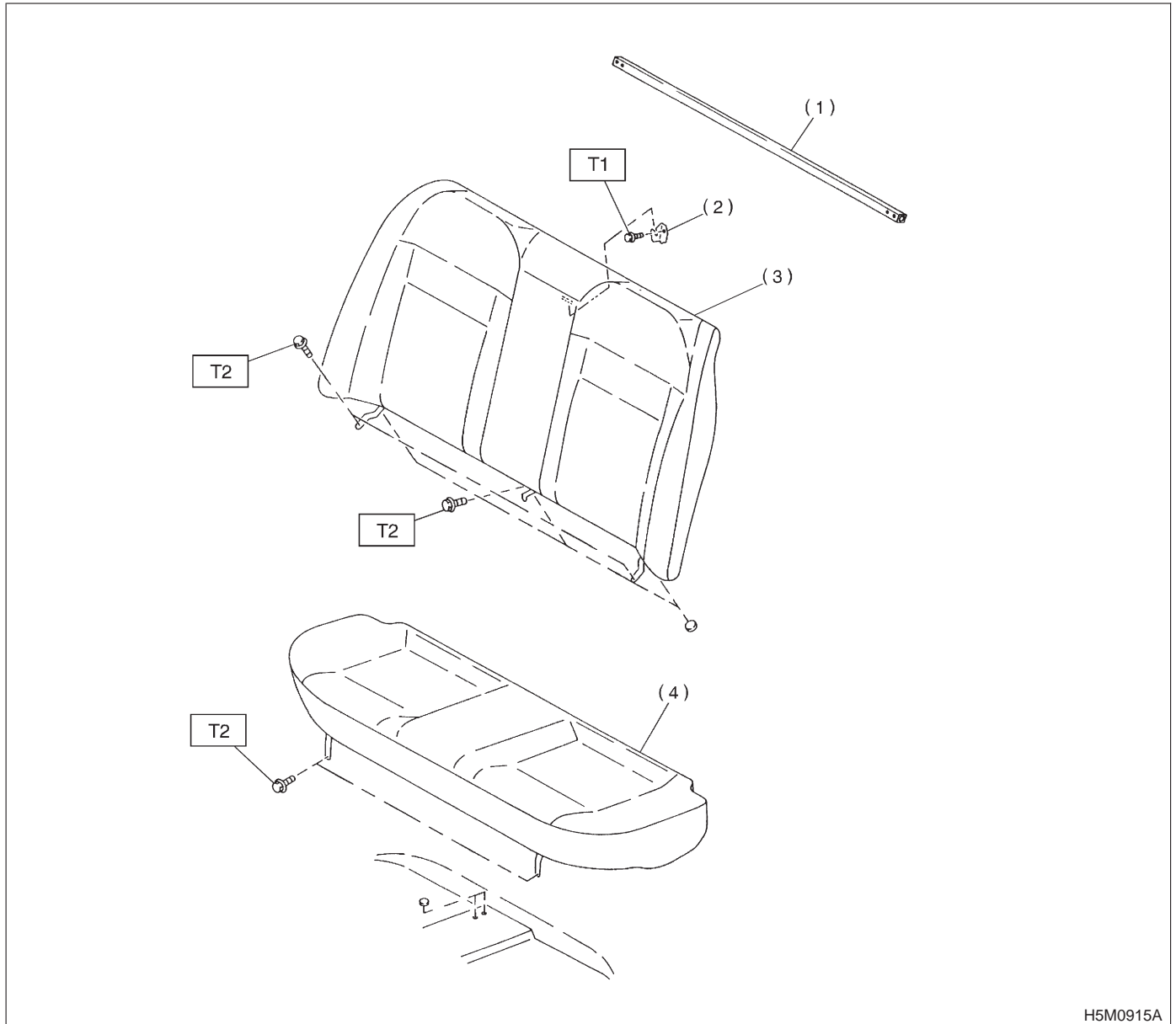
T1: 23±5 (2.3±0.5, 16.6±3.6)

T2: 29±7 (3.0±0.7, 21.7±5.1)

T3: 52±10 (5.3±1.0, 38±7)

2. Rear Seat

A: SEDAN AND COUPE MODEL



- (1) Rear seat reinforcement
- (2) Hook
- (3) Backrest

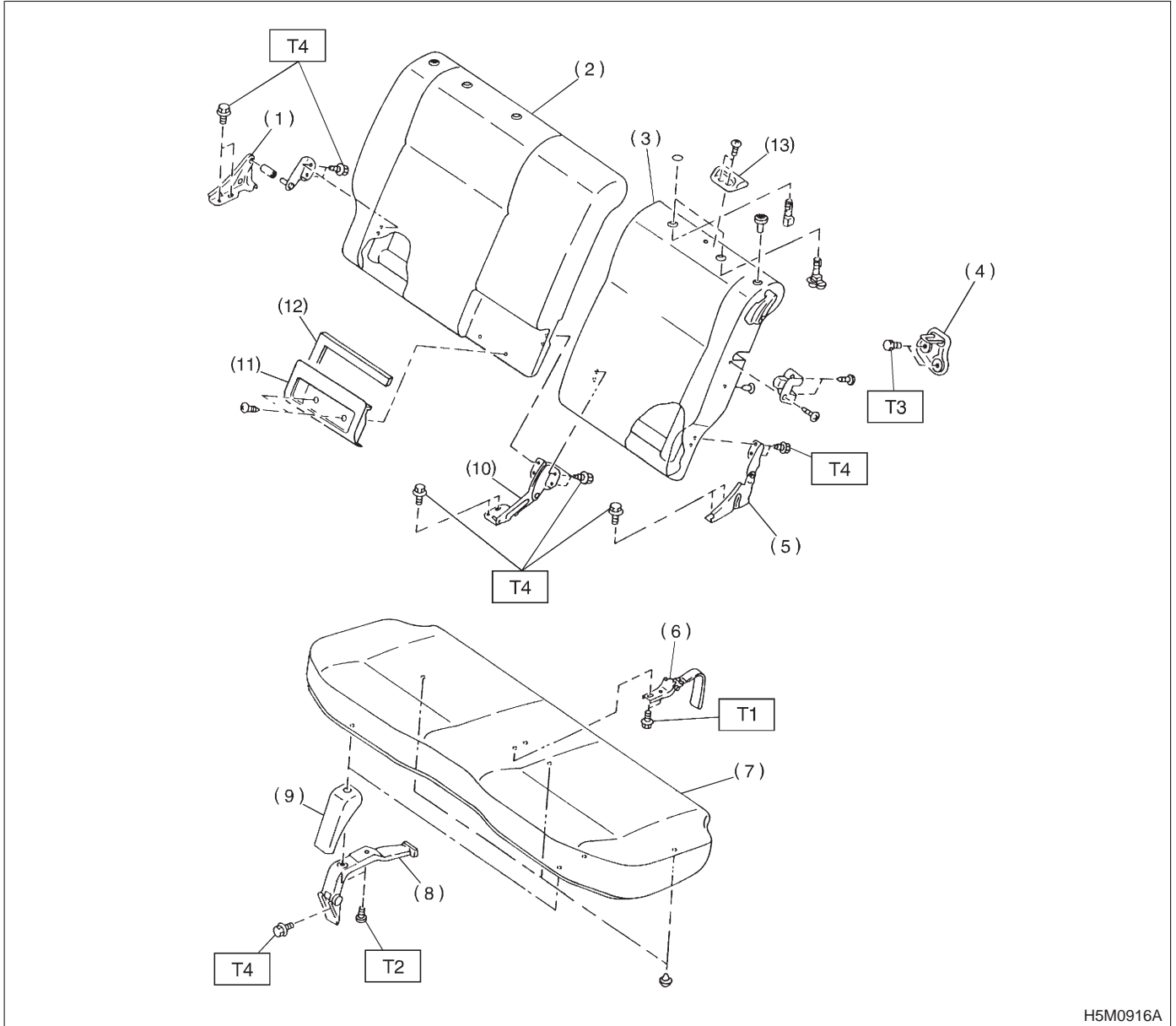
- (4) Rear cushion

Tightening torque: N·m (kg·m, ft·lb)

T1: 10±3 (1.0±0.3, 7.2±2.2)

T2: 25±7 (2.5±0.7, 18.1±5.1)

B: WAGON MODEL



- | | |
|------------------------|----------------------------|
| (1) Hinge bracket (RH) | (8) Hinge |
| (2) Hinge bracket (RH) | (9) Hinge cover |
| (3) Backrest (LH) | (10) Backrest center hinge |
| (4) Striker | (11) Belt pocket |
| (5) Hinge bracket (LH) | (12) Pad ASSY pocket |
| (6) Lock hinge | (13) Hook |
| (7) Rear cushion | |

Tightening torque: N·m (kg·m, ft·lb)

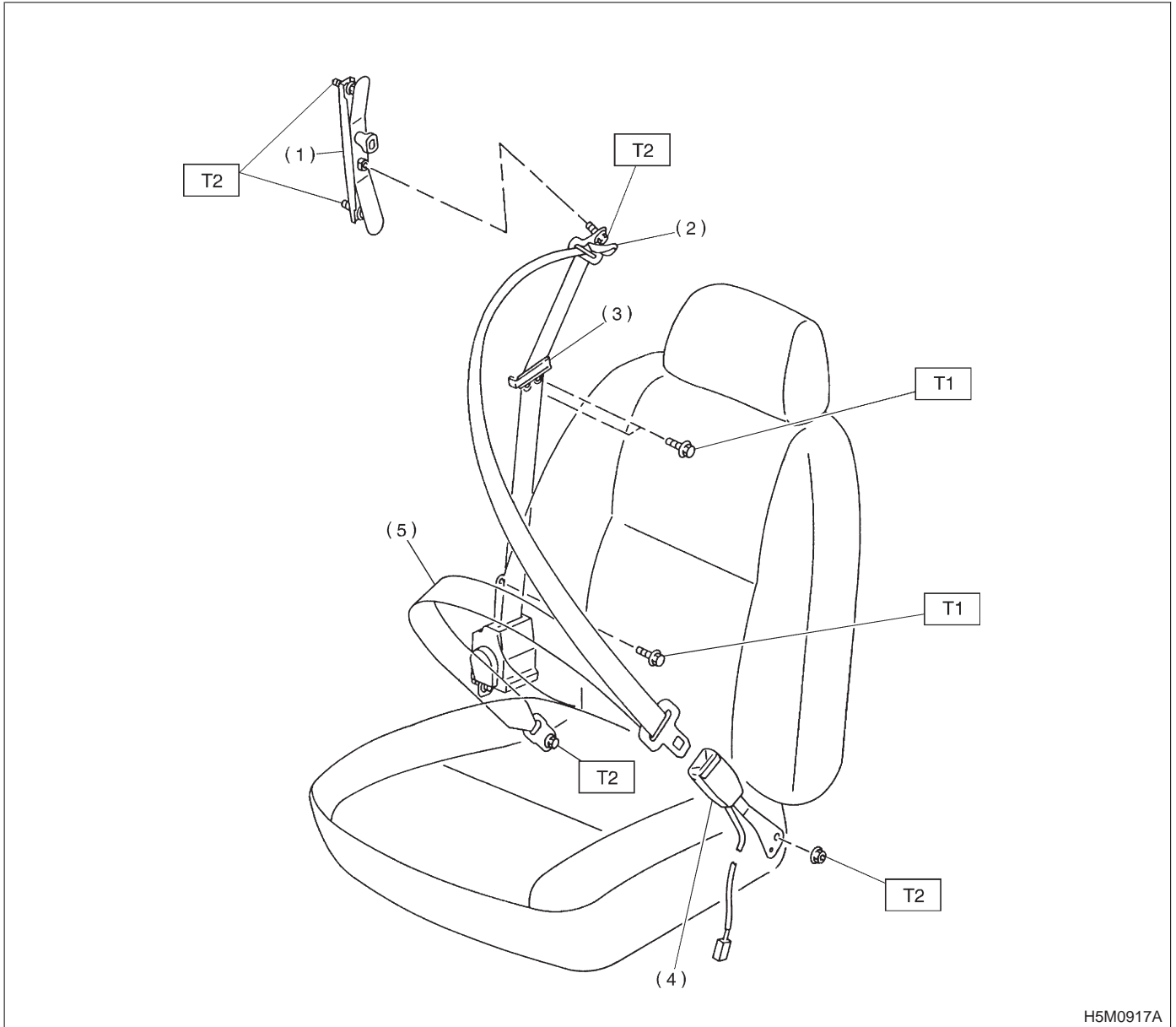
T1: 2±1 (0.2±0.1, 1.4±0.7)

T2: 5.9±1.5 (0.6±0.15, 4.3±1.1)

T3: 10±3 (1.0±0.3, 7.2±2.2)

T4: 25±7 (2.5±0.7, 18.1±5.1)

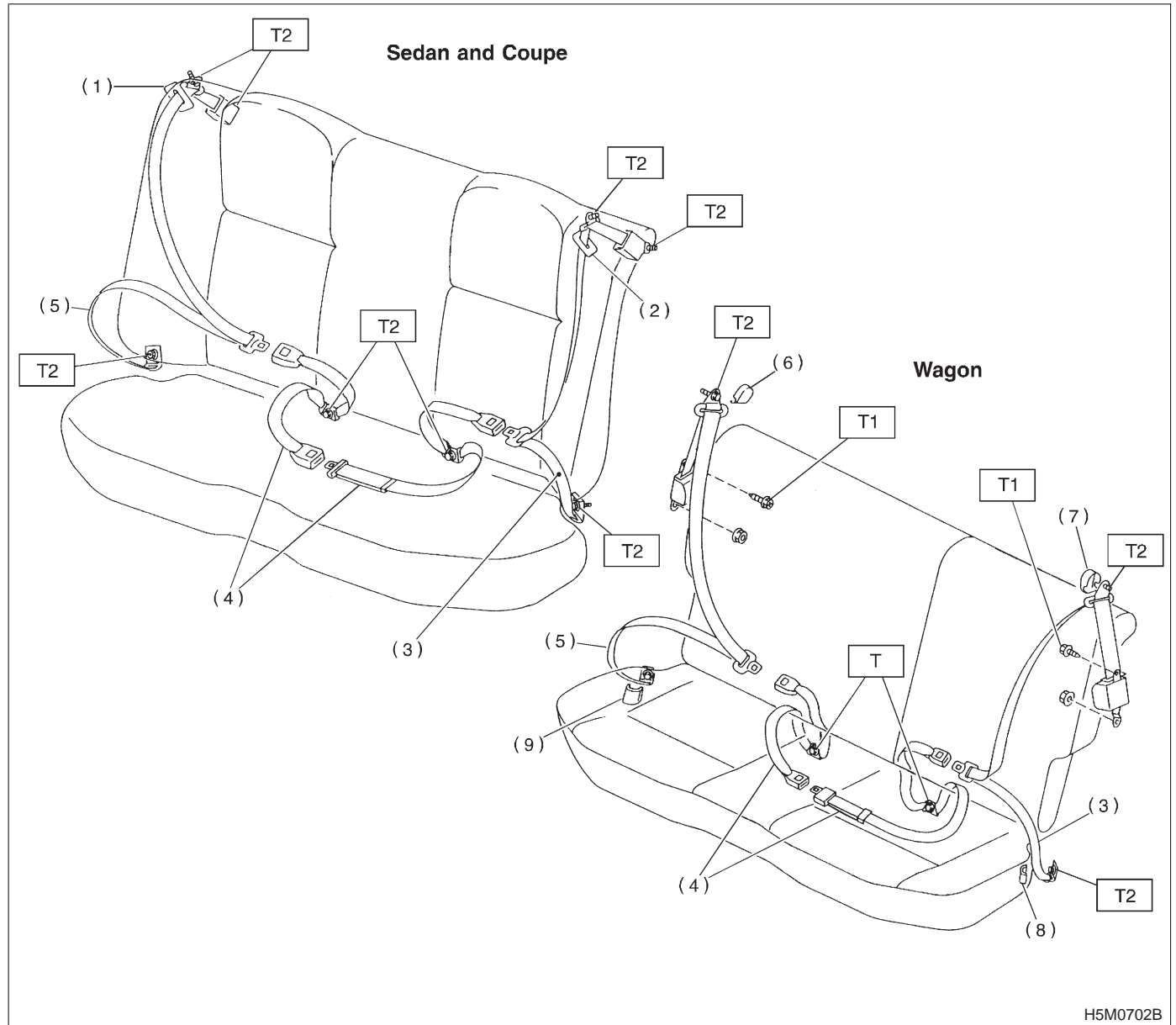
3. Front Seat Belt



- (1) Adjuster anchor ASSY
- (2) Through cover
- (3) Webbing guide
- (4) Inner belt ASSY
- (5) Outer belt ASSY

Tightening torque: N-m (kg-m, ft-lb)
T1: 13±3 (1.3±0.3, 9.4±2.2)
T2: 35±13 (3.6±1.3, 26±9)

4. Rear Seat Belt



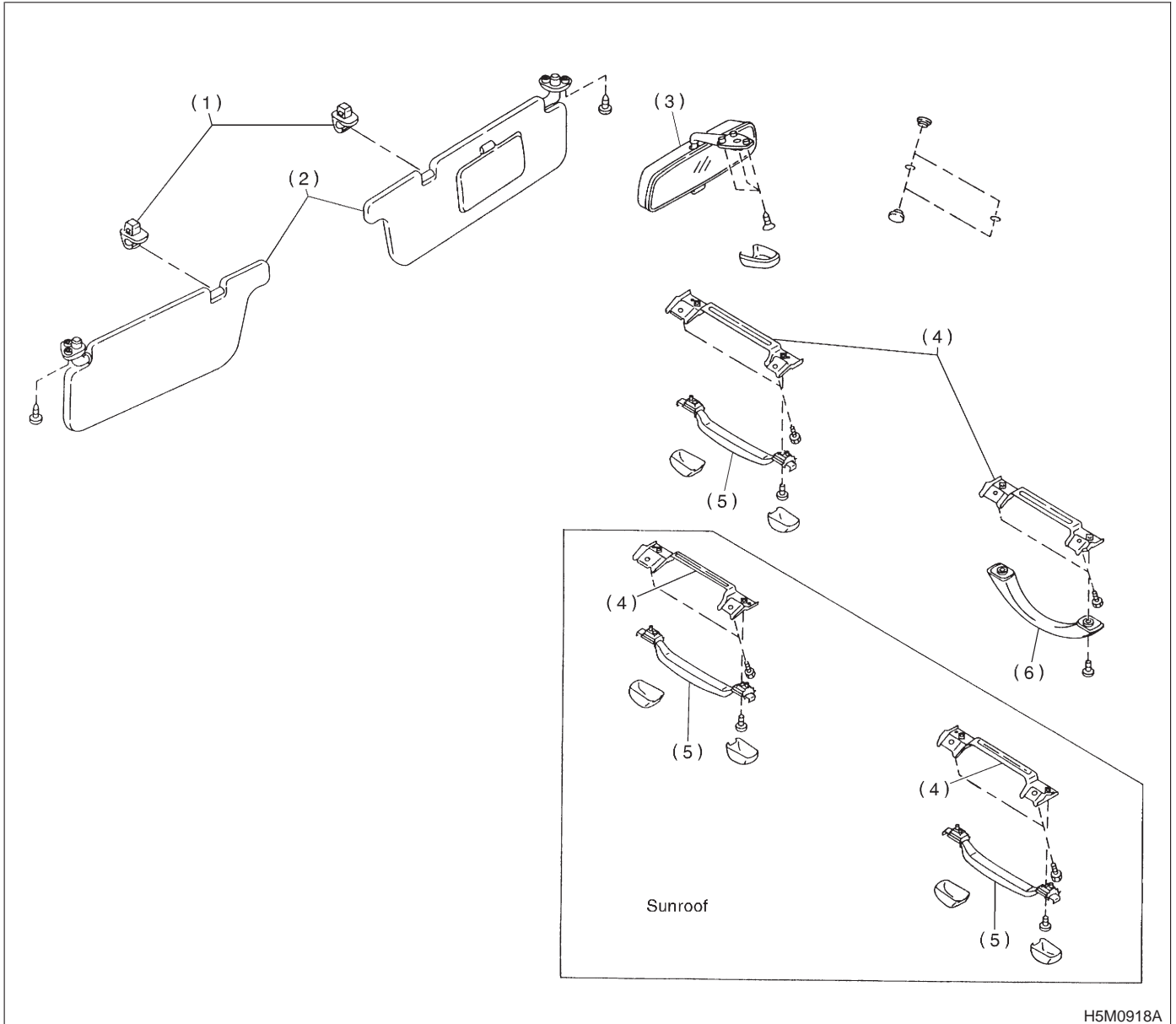
- | | |
|--------------------------|---------------------------|
| (1) Webbing cover (RH) | (6) Through cap (RH) |
| (2) Webbing cover (LH) | (7) Through cap (LH) |
| (3) Outer seat belt (LH) | (8) Lap anchor cover (LH) |
| (4) Center seat belt | (9) Lap anchor cover (RH) |
| (5) Outer seat belt (RH) | |

Tightening torque: N-m (kg-m, ft-lb)

T1: 13±3 (1.3±0.3, 9.4±2.2)

T2: 35±13 (3.6±1.3, 26±9)

5. Inner Accessories

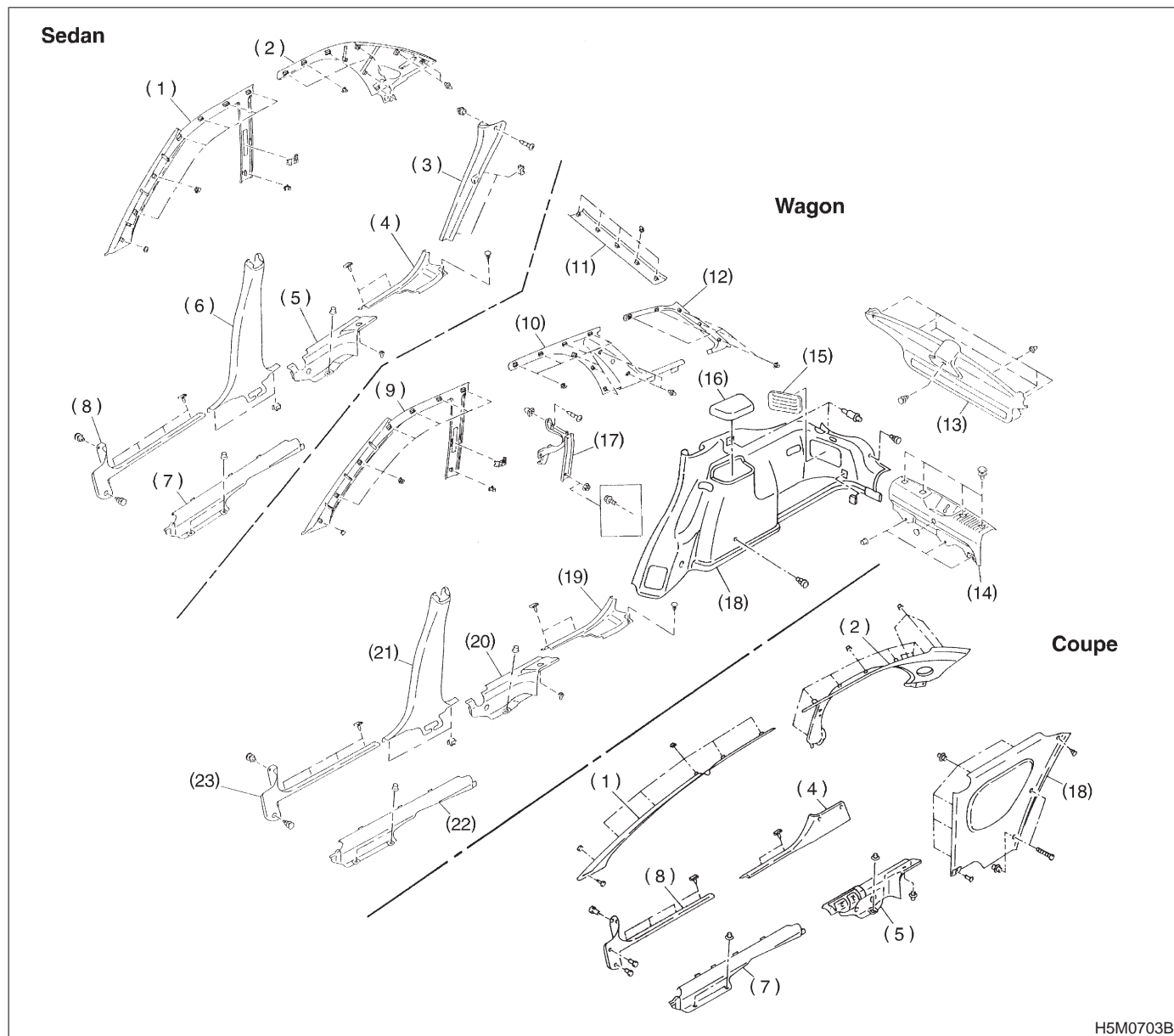


- (1) Hook
- (2) Sun visor

- (3) Rearview mirror
- (4) Assist rail bracket

- (5) Assist grip (retractable)
- (6) Assist grip (fixed)

6. Inner Trim



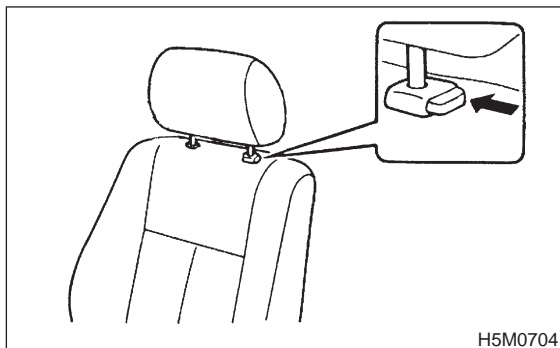
H5M0703B

- | | | |
|---------------------------------|------------------------------------|----------------------------------|
| (1) Front pillar upper trim | (9) Front pillar upper trim | (17) Trim bracket |
| (2) Rear pillar upper trim | (10) Rear quarter upper front trim | (18) Rear quarter lower trim |
| (3) Rear pillar lower trim | (11) Rear rail trim | (19) Side sill rear upper cover |
| (4) Side sill rear upper cover | (12) Rear quarter upper rear trim | (20) Side sill rear lower cover |
| (5) Side sill rear lower cover | (13) Rear gate trim | (21) Center pillar lower trim |
| (6) Center pillar lower trim | (14) Rear skirt trim | (22) Side sill front lower cover |
| (7) Side sill front lower cover | (15) Lamp cover | (23) Front pillar lower trim |
| (8) Front pillar lower trim | (16) Cover | |

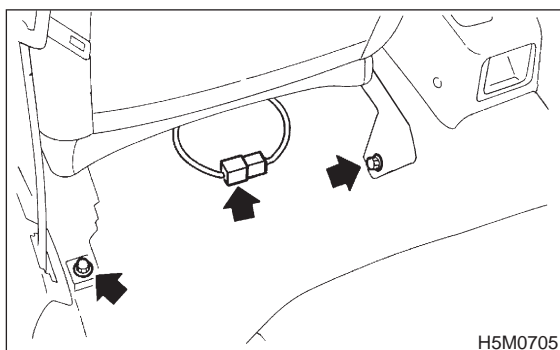
1. Front Seat

A: REMOVAL

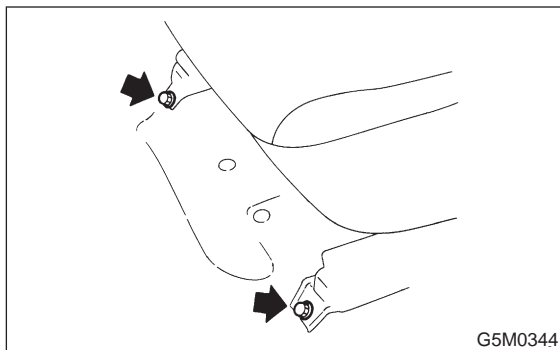
1) While operating button (located on top of backrest), lift headrest out with hand placed between backrest and headrest.



- 2) Pull reclining lever back to fold backrest all the way forward. While pulling slide adjuster lever, move seat all the way forward.
- 3) Disconnect connector under driver's seat.
- 4) Remove bolt cover at rear end of slide rail.
- 5) Remove bolts securing seat rear.



- 6) While pulling slide adjuster lever, slide seat all the way back.
- 7) Remove bolts securing front of seat.



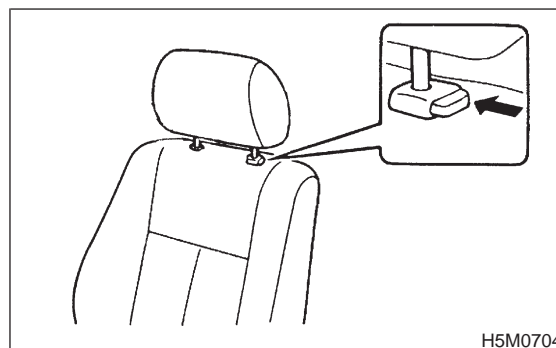
- 8) Remove front seat from vehicle.

CAUTION:

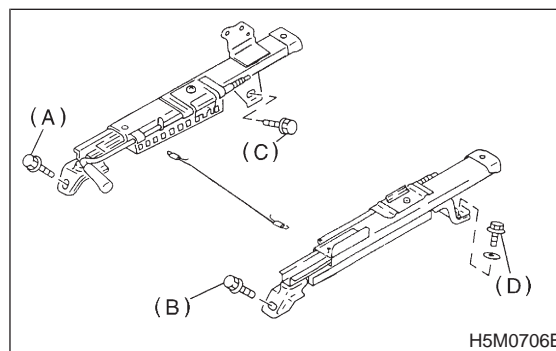
Be careful not to scratch seat when removing it from vehicle.

B: INSTALLATION

1) While operating button (located on top of backrest), lift headrest out by placing your hand between backrest and headrest.



- 2) Pull reclining lever back to fold backrest all the way forward. Pull slide adjuster lever and move lower slide rail all the way backward.
- 3) Position seat in compartment and align the holes on the seat with the holes on the car body side.
- 4) Secure the front of seat using inward and outward bolts (A) and (B) in that order.
- 5) While pulling slide adjuster lever, move seat all the way forward.
- 6) Secure the rear of seat using inward and outward bolts (C) and (D).



- 7) Connect connector under driver's seat.

CAUTION:

Check that all lock plate pawls are completely and equally inserted into the holes in the slide rail brackets.

- 8) After installation, ensure that all mechanisms operate properly and lock.
- 9) If any mechanism does not function properly, loosen bolts (C) and (D), slide seat as required, insert all lock plate pawls into holes in slide rail brackets, and tighten bolts (C) and (D) in that order.
- 10) Install bolt cover on rear end of slide rail.
- 11) Install headrest on backrest.

NOTE:

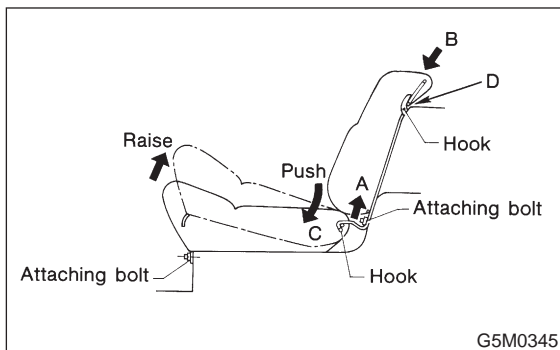
Tighten bolts in the designated order.

2. Rear Seat

A: REMOVAL

1. SEDAN AND COUPE MODEL

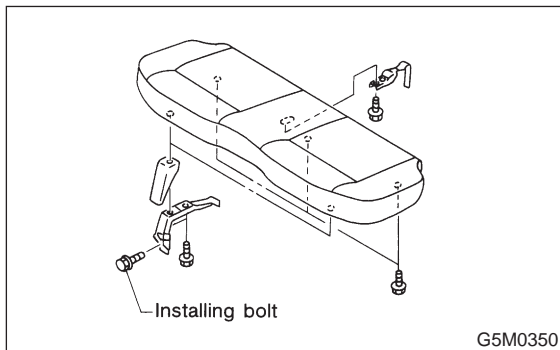
- 1) Remove bolts securing hinges (located at front of cushion) to body.
- 2) Slightly raise front of cushion while pushing down on cushion in the direction of "C". With cushion held in that position, move it forward until it is unhooked.



- 3) Remove bolts securing lower portion of backrest to body.
- 4) Lift rear seat backrest in direction "A" until it is released from upper hooks.

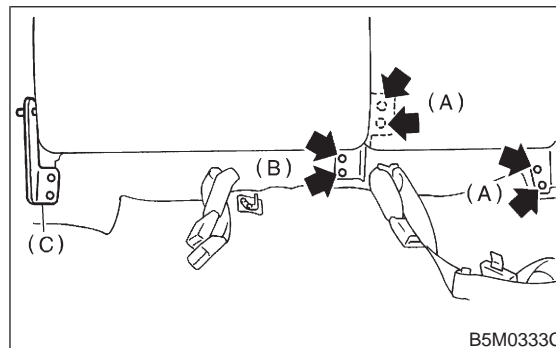
2. WAGON MODEL

- 1) Remove bolts securing hinges (located at front of seat) to body.



- 2) Pull strap (located in middle rear portion of cushion) to release lock. Lift cushion out and away from body.
- 3) Pull knobs (located at each side of backrest's upper portion) up to release lock, and fold backrest all the way forward.

- 4) Remove the bolt and then remove backrest (LH side).
- 5) Remove the bolt and then remove backrest (RH side) from hinge bracket.

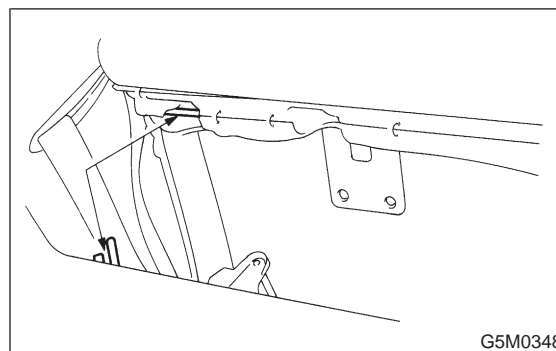


- (A) Bolt (LH side)
(B) Bolt (Rh side)
(C) Hinge bracket

B: INSTALLATION

1. SEDAN AND COUPE MODEL

- 1) Before installing backrest, ensure that trim panel, insulator and seat belt are properly installed.
- 2) Transfer outer seat belt webbing to front of backrest and fold backrest forward. Attach seat belt webbing to upper hooks (2 places), and move pillow in the direction of "B" until backrest is aligned with lower mounting holes in body.

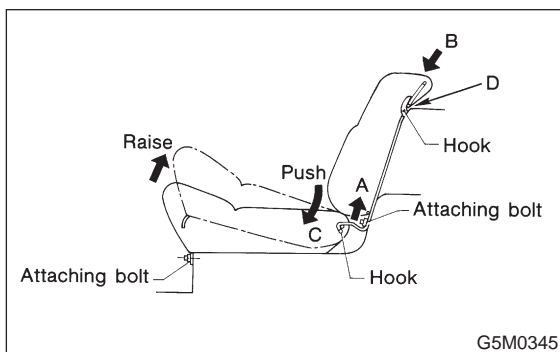


- 3) Secure lower center and both sides of backrest to body with bolts.

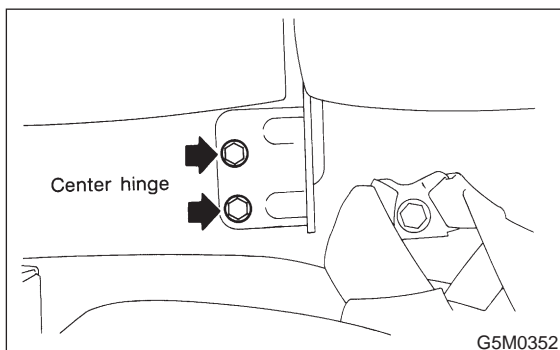
- 4) Slightly raise front section of cushion while pushing down on cushion in the direction of "C". With cushion held in that position, attach rear section of cushion to hooks at lower frame location.
- 5) Secure front of cushion to body with bolts.

CAUTION:

- Before installing seat, ensure that seat belt is placed on cushion.
- Confirm that winding of three-point type seat belt can operate regularly.

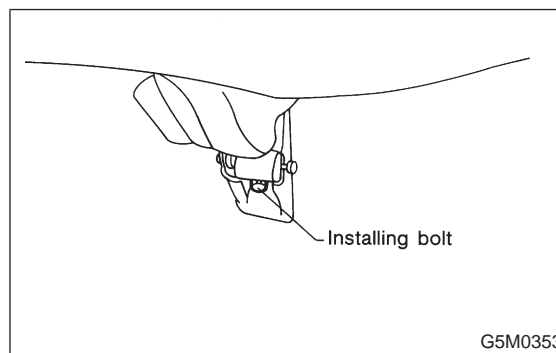
**2. WAGON MODEL**

- 1) Install hinge bracket to body.
- 2) Insert right backrest hinge pin into hole in bracket. Tilt backrest backward until striker engages with lock.
- 3) Secure right backrest center hinge to body using a bolt.



- 4) Temporarily install left backrest side hinge to body using a bolt, and fold backrest forward to the floor.
- 5) Roll up mat (located at rear of left backrest), and install center hinge using a bolt.
- 6) Tilt left backrest until striker engages with lock, and tighten bolt.

- 7) Install hinges to front of cushion and tighten with bolts. Check that lock properly engages.



- 8) Fold backrest onto cushion and overlap trunk mat and mat at rear of backrest.

CAUTION:

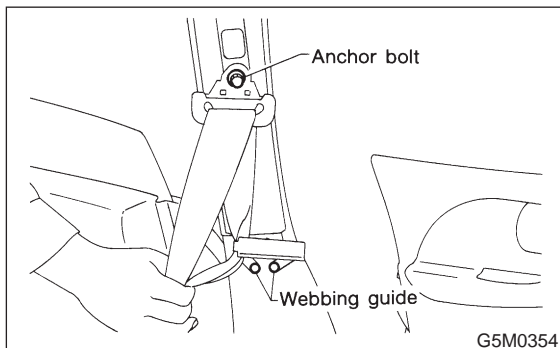
- Do not allow center seat belt to get under cushion when folding cushion.
- Ensure that side seat belt tongue is free from cushion and trim panel.
- Lift front of cushion to ensure that cushion is properly locked.

3. Front Seat Belt

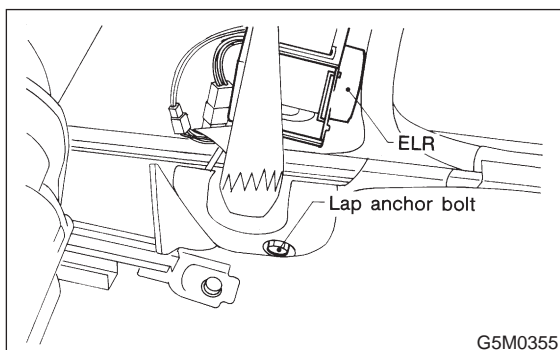
A: REMOVAL AND INSTALLATION

1. OUTER BELT (sedan and wagon)

- 1) Remove through-anchor cover cap.
- 2) Remove shoulder anchor bolt.
- 3) Remove webbing guide.



- 4) Remove center lower pillar trim panel.
- 5) Remove front cover side plate.
- 6) Roll up floor mat at the bottom of center pillar.
- 7) Remove lap anchor bolt.



- 8) Remove belt retractor and outer belt.
- 9) Installation is in the reverse order of removal.

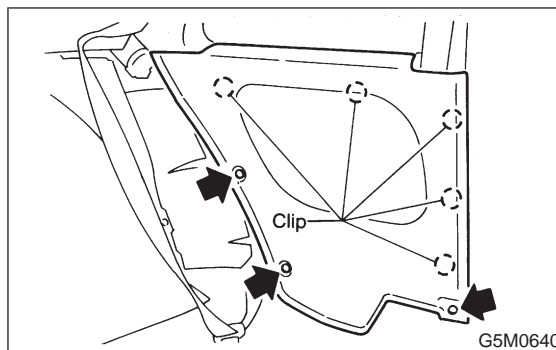
CAUTION:

- The left and right ELR's are not mutually interchangeable because different sensors are used.
- Be careful not to twist belts during installation.

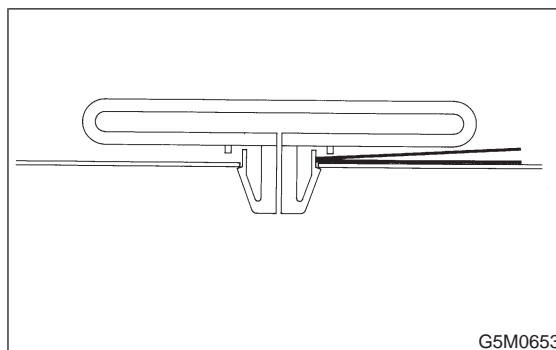
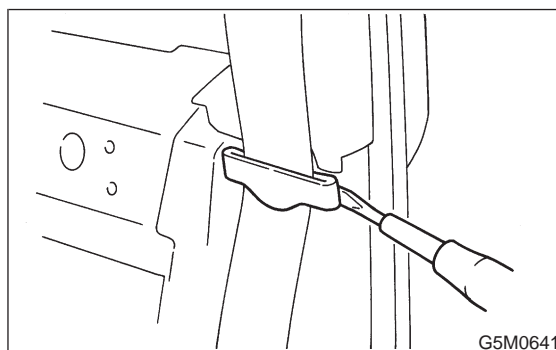
2. OUTER BELT (coupe)

- 1) Remove rear seat cushion and backrest.
<Ref. to 5-3 [W2A1].>

- 2) Remove rear quarter trim.



- 3) Remove webbing guide.

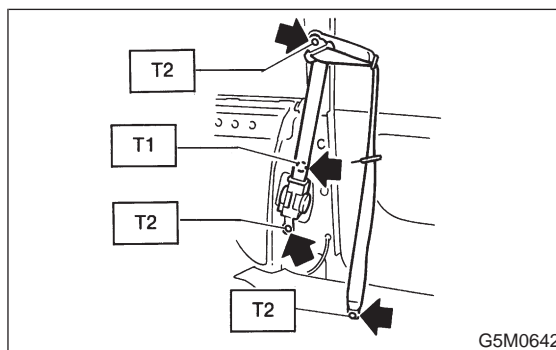


- 4) Remove anchor cover cap.
- 5) Remove four bolts and then belt retractor and outer belt. Tightening torque:
- 6) Installation is in the reverse order of removal.

Tightening torque:

T1: 13±3 N·m (1.3±0.3 kg-m, 9.4±2.2 ft-lb)

T2: 35±13 N·m (3.6±1.3 kg-m, 26±9 ft-lb)

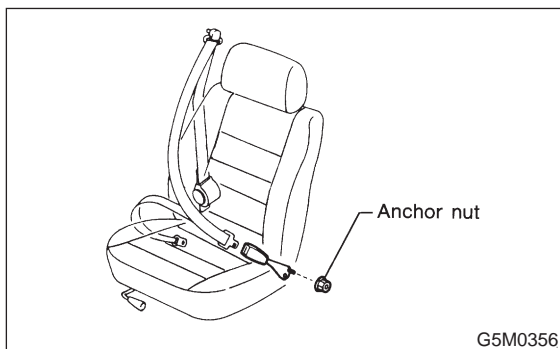


CAUTION:

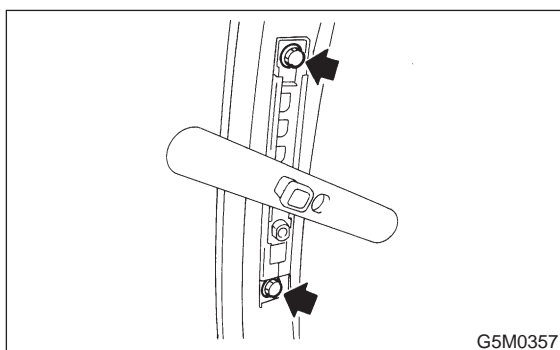
- The left and right ELR's are not mutually interchangeable because different sensors are used.
- Be careful not to twist belts during installation.

3. INNER BELT

Remove anchor nut.

**4. ADJUSTABLE SHOULDER ANCHOR**

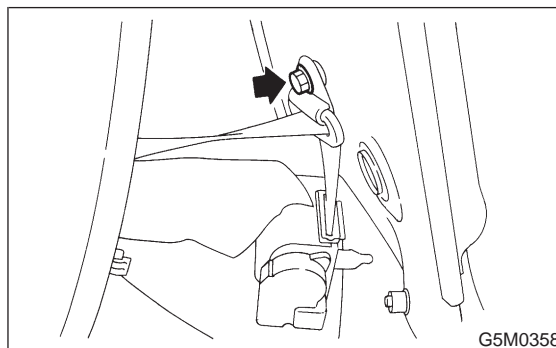
- 1) Remove shoulder anchor bolt.
- 2) Remove lower center pillar trim.
- 3) Remove front and front pillar trim panel.
- 4) Remove adjustable shoulder anchor assembly.



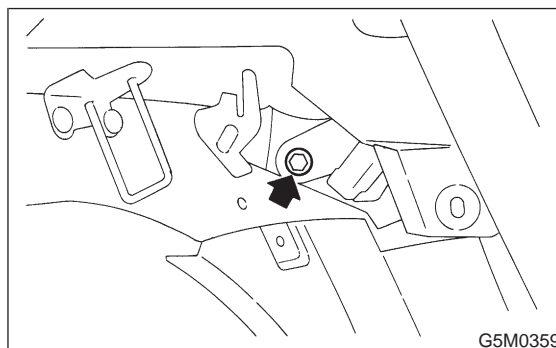
- 5) Installation is in the reverse order of removal.

4. Rear Seat Belt**A: REMOVAL AND INSTALLATION****1. SEDAN AND COUPE MODEL**

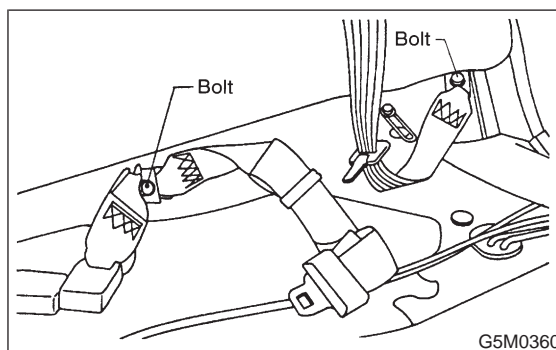
- 1) Remove rear cushion from body.
- 2) Remove rear backrest from body.
- 3) Remove screw from lower side of rear quarter trim, and lift-up lower side of rear quarter trim.
- 4) Remove trim panel rear bracket upper.
- 5) Remove rear quarter trim.
- 6) Remove outer anchor bolts.



- 7) Remove rear bolt from ELR.



- 8) Remove belt from outlet in rear quarter along slit.
- 9) Remove inner bolts which secure outer seat.
- 10) Remove washer from bolt, then remove bolt, belt assembly, and anchor plate bracket.
- 11) Remove inner bolts (2 places) from center seat.



- 12) Remove washer from bolt, and remove bolt, belt assembly and anchor plate bracket.

4. Rear Seat Belt

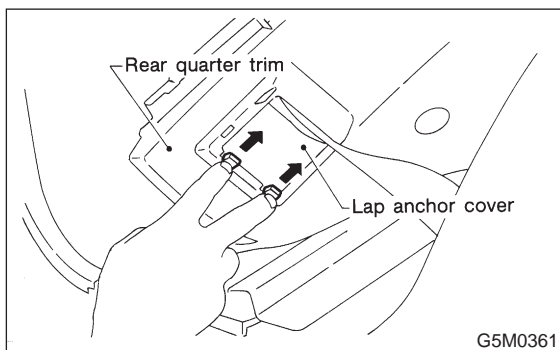
13) Installation is in the reverse order of removal. Ensure that seat belt is properly reeled on and off after installation of ELR.

CAUTION:

- Be extremely careful not to confuse center seat anchor plate with outer seat anchor plate during installation.
- Ensure that seat belts are free from twisting after installation.
- Ensure that tongues, buckles and belts are properly placed on seat.

2. WAGON MODEL

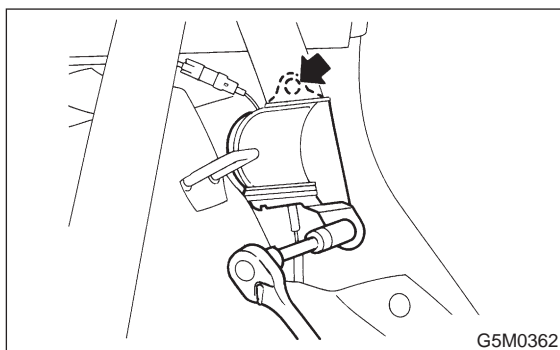
- 1) Raise rear cushion.
- 2) Remove rear backrest from body.
- 3) Remove shoulder anchor cover and anchor bolt.
- 4) Remove lower portion of rear quarter trim.
- 5) Remove lap anchor cover and bolt.



- 6) Remove 7/16-20 UNF nuts which secure ELR and remove ELR.

CAUTION:

Remove outer seat belt and center seat belt in similar manner used to remove those from Sedan.



- 7) Installation is in the reverse order of removal. Ensure that seat belt is properly reeled on and off after installation of ELR.

CAUTION:

- Be extremely careful not to confuse center seat anchor plate with outer seat anchor plate during installation.

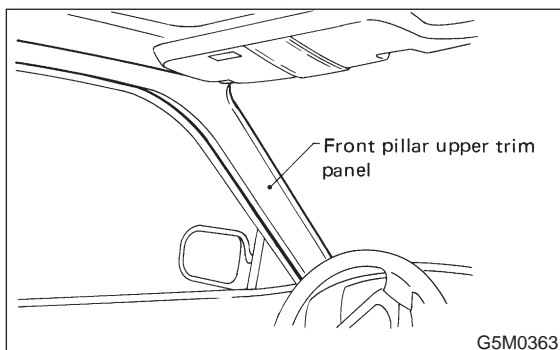
- Ensure that seat belts are free from twisting after installation.
- Ensure that tongues, buckles and belts are properly placed on seat.

5. Inner Trim Panel

A: REMOVAL AND INSTALLATION

1. FRONT PILLAR UPPER TRIM PANEL

- 1) Remove center pillar lower trim panel.
- 2) Remove seat belt anchor bolts.
- 3) Pry pawls off body flange of front pillar upper trim panel using screwdriver.
- 4) Remove clips which hold front pillar upper trim panel, and lift trim panel out by moving it toward the compartment.



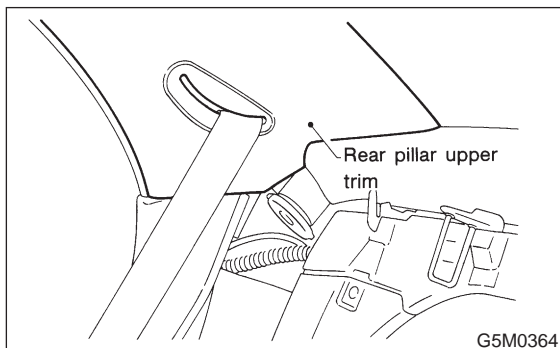
- 5) Installation is in the reverse order of removal.

CAUTION:

Be sure to securely hook pawls of front pillar upper trim panel on body flange.

2. REAR PILLAR UPPER TRIM PANEL (SEDAN)

- 1) Remove rear seat cushion and backrest.
- 2) Remove tapping screw from rear pillar lower trim panel, and remove trim panel by sliding it forward.
- 3) Remove front pillar upper trim end.
- 4) Pry the pawl off front end using screwdriver.
- 5) Remove clips which hold rear pillar upper trim, and remove trim panel by sliding it forward.



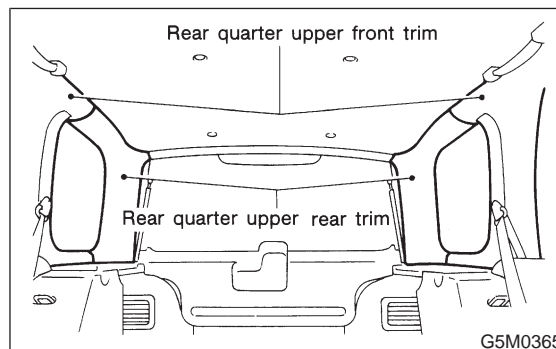
- 6) Installation is in the reverse order of removal.

CAUTION:

Be sure to securely hook pawls of rear pillar upper trim panel on body flange.

3. REAR QUARTER PILLAR UPPER TRIM PANEL (WAGON)

- 1) Set rear seat cushion up.
- 2) Remove rear seat backrest.
- 3) Remove rear quarter lower trim.
- 4) Remove rear rail trim.
- 5) Remove rear quarter upper front trim.
- 6) Remove rear quarter upper rear trim.



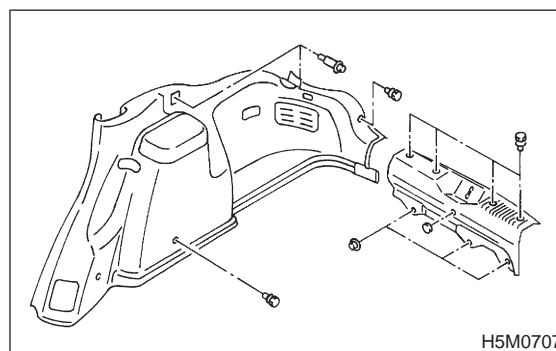
- 7) Installation is in the reverse order of removal.

CAUTION:

Be sure to securely hook pawls of rear quarter pillar trim panel on body flange.

4. REAR QUARTER LOWER TRIM PANEL (WAGON)

- 1) Remove luggage cover.
- 2) Set rear seat cushion up.
- 3) Remove rear seat backrest.
- 4) Remove rear skirt trim.
- 5) Remove clip and screw then disconnect connector (RH side).
- 6) Remove rear seat belt lower anchor then remove rear quarter lower trim.



- 7) Installation is in the reverse order of removal.

CAUTION:

Be careful not to ride trim panel over harness, insulators, etc.

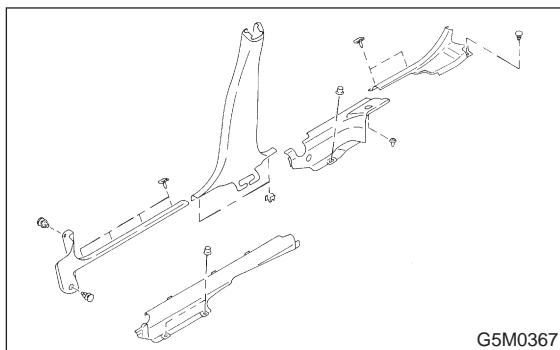
5. FLOOR MAT **AIRBAG**

Supplemental Restraint System "Airbag" Airbag system wiring harness is routed near floor mat.

CAUTION:

- All Airbag system wiring harness and connectors are colored yellow. Do not use electrical test equipment on these circuit.
- Be careful not to damage Airbag system wiring harness when servicing floor mat.

- 1) Remove front seats.
- 2) Remove rear seat cushion.
- 3) Remove center tray, indicator cover, cover assembly, and console box, depending on the specifications.
- 4) Remove front pillar lower trim panel.
- 5) Remove center pillar lower trim panel.
- 6) Remove three clips under rear seat cushion.
- 7) Remove rear cover side plate and rear pillar lower trim.
- 8) Pull out edge in the groove of side sill cover.

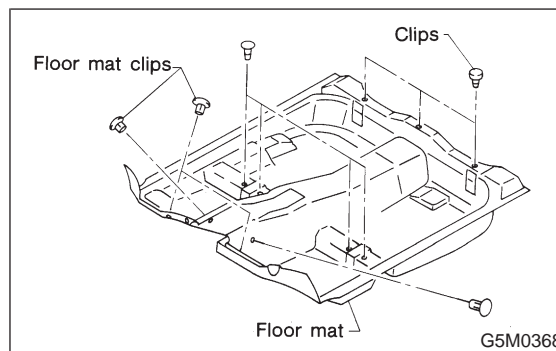


- 9) Remove four clips under front seat.
- 10) Remove four clips in toe board area.

NOTE:

When pulling out edge, do not pull mat alone; pull mat together with edge. Pry off two steel clips on side sill front cover and one on side sill rear cover using screwdriver.

- 11) Remove mat hook.
- 12) Remove mat from toe board area.



- 13) Remove mat from heater unit.
- 14) Roll mat, and take it out of opened rear door.
- 15) Installation is in the reverse order of removal.

NOTE:

- Secure mat firmly with hook and velcro tape.
- Insert mat edge firmly into the groove of side sill cover.