

FUEL SYSTEM 2-8

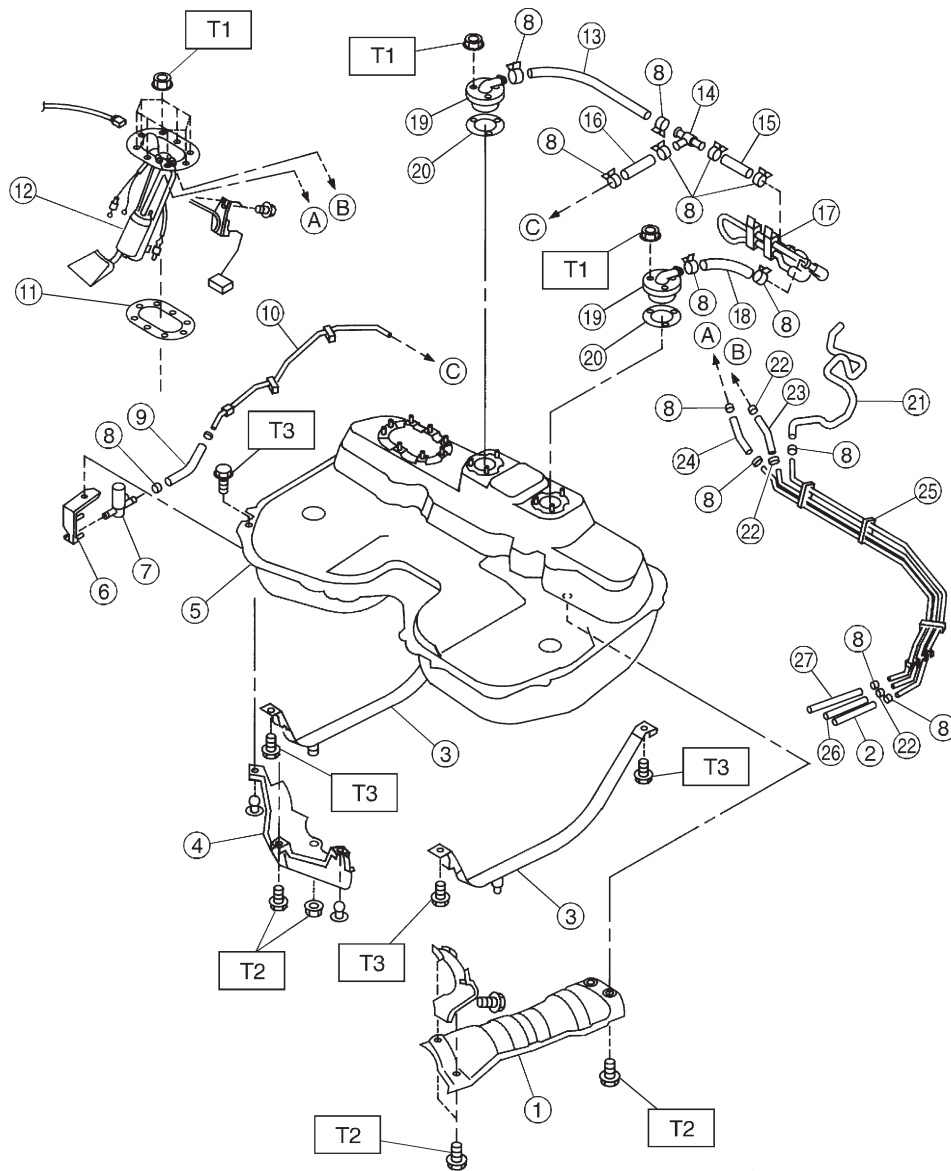
	Page
S SPECIFICATIONS AND SERVICE DATA	2
1. Specifications	2
C COMPONENT PARTS	3
1. Fuel Tank	3
2. Fuel Line	7
W SERVICE PROCEDURE	11
1. On-Car Services.....	11
2. Fuel Tank	13
3. Fuel Filler Pipe.....	17
4. Fuel Filter	19
5. Fuel Pump.....	20
6. Fuel Meter Unit	21
7. Fuel Delivery, Return and Evaporation Lines.....	22
8. Roll Over Valve	23
9. Fuel Cut Valve	24
K DIAGNOSTICS	25
1. Fuel System Trouble in General.....	25

1. Specifications

Model		1800 cc	2200 cc
Fuel tank	Capacity	50 ℓ (13.2 US gal, 11.0 Imp gal)	60 ℓ (15.9 US gal, 13.2 Imp gal)
	Location	Under rear seat	
Fuel pump	Type	Impeller	
	Discharge pressure	250.1 kPa (2.55 kg/cm ² , 36.3 psi)	
	Discharge flow	More than 80 ℓ (21.1 US gal, 17.6 Imp gal)/h [12 V at 250.1 kPa (2.55 kg/cm ² , 36.3 psi)]	
Fuel filter		Cartridge type	

1. Fuel Tank

A: 1800 cc MODEL



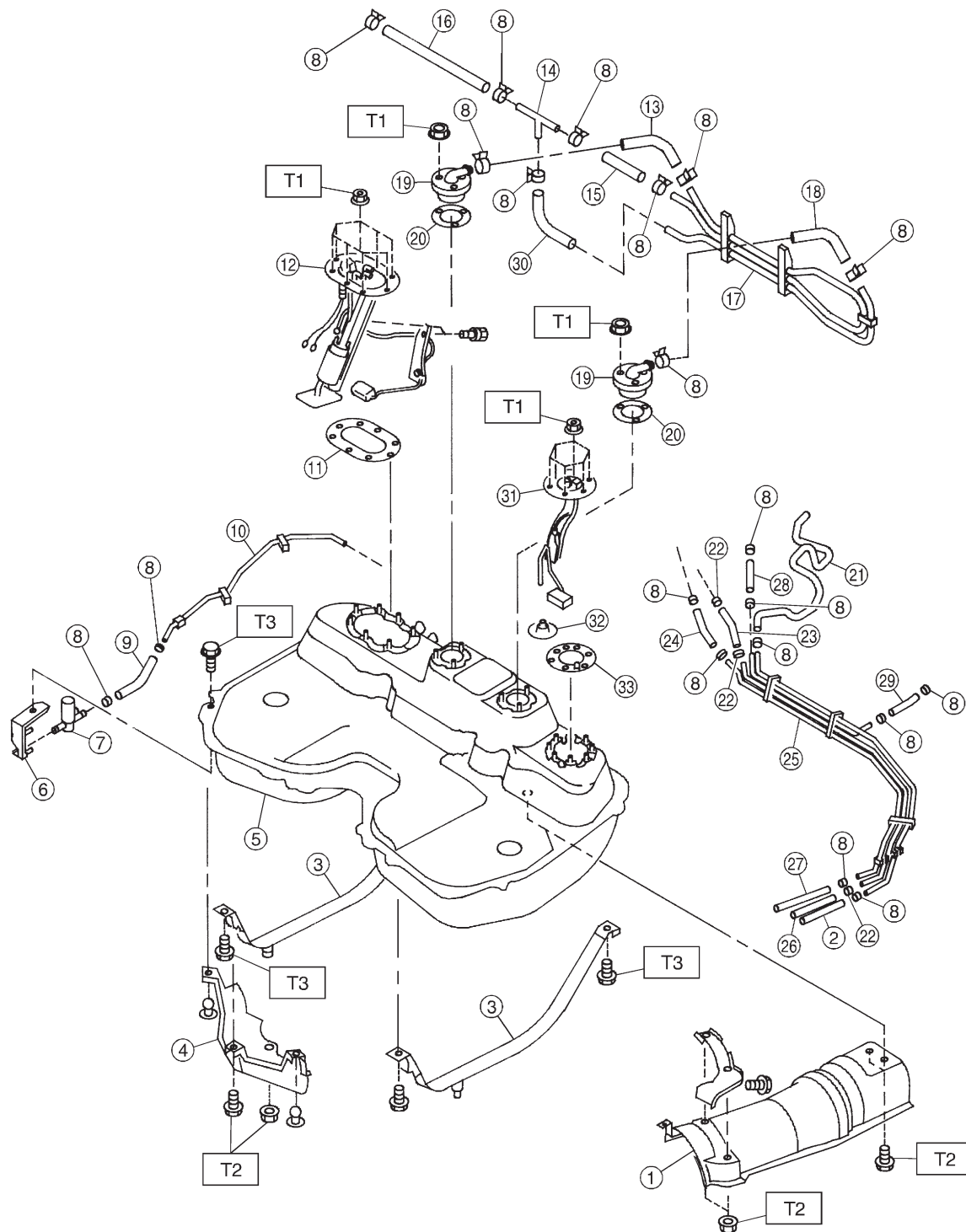
1. Fuel Tank

- ① Heat sealed cover
- ② Evaporation hose E
- ③ Fuel tank band
- ④ Protector
- ⑤ Fuel tank
- ⑥ Pressure control solenoid valve bracket
- ⑦ Pressure control solenoid valve
- ⑧ Clip
- ⑨ Evaporation hose G
- ⑩ Evaporation pipe A
- ⑪ Fuel pump gasket
- ⑫ Fuel pump ASSY
- ⑬ Evaporation hose F
- ⑭ Joint pipe
- ⑮ Evaporation hose B
- ⑯ Evaporation hose A
- ⑰ Evaporation pipe ASSY

- ⑱ Evaporation hose D
- ⑲ Fuel cut valve
- ⑳ Fuel cut valve gasket
- ㉑ Evaporation hose C
- ㉒ Clamp
- ㉓ Fuel delivery hose A
- ㉔ Fuel return hose A
- ㉕ Fuel pipe ASSY
- ㉖ Fuel delivery hose B
- ㉗ Fuel return hose B

Tightening torque: N·m (kg-m, ft-lb)**T1: 4.4±1.5 (0.45±0.15, 3.3±1.1)****T2: 7.4±2.0 (0.75±0.2, 5.4±1.4)****T3: 33±10 (3.4±1.0, 25±7)**

B: 2200 cc MODEL



H2M2313A

1. Fuel Tank

- ① Heat sealed cover
- ② Evaporation hose E
- ③ Fuel tank band
- ④ Protector
- ⑤ Fuel tank
- ⑥ Pressure control solenoid valve bracket
- ⑦ Pressure control solenoid valve
- ⑧ Clip
- ⑨ Evaporation hose G
- ⑩ Evaporation pipe A
- ⑪ Fuel pump gasket
- ⑫ Fuel pump ASSY
- ⑬ Evaporation hose F
- ⑭ Joint pipe
- ⑮ Evaporation hose B
- ⑯ Evaporation hose A
- ⑰ Evaporation pipe ASSY
- ⑱ Evaporation hose D
- ⑲ Fuel cut valve
- ⑳ Fuel cut valve gasket

- ㉑ Evaporation hose C
- ㉒ Clamp
- ㉓ Fuel delivery hose A
- ㉔ Fuel return hose A
- ㉕ Fuel pipe ASSY
- ㉖ Fuel delivery hose B
- ㉗ Fuel return hose B
- ㉘ Jet pump hose A
- ㉙ Jet pump hose B
- ㉚ Evaporation hose E
- ㉛ Fuel sub meter unit
- ㉜ Jet pump filter
- ㉝ Gasket

Tightening torque: N·m (kg-m, ft-lb)

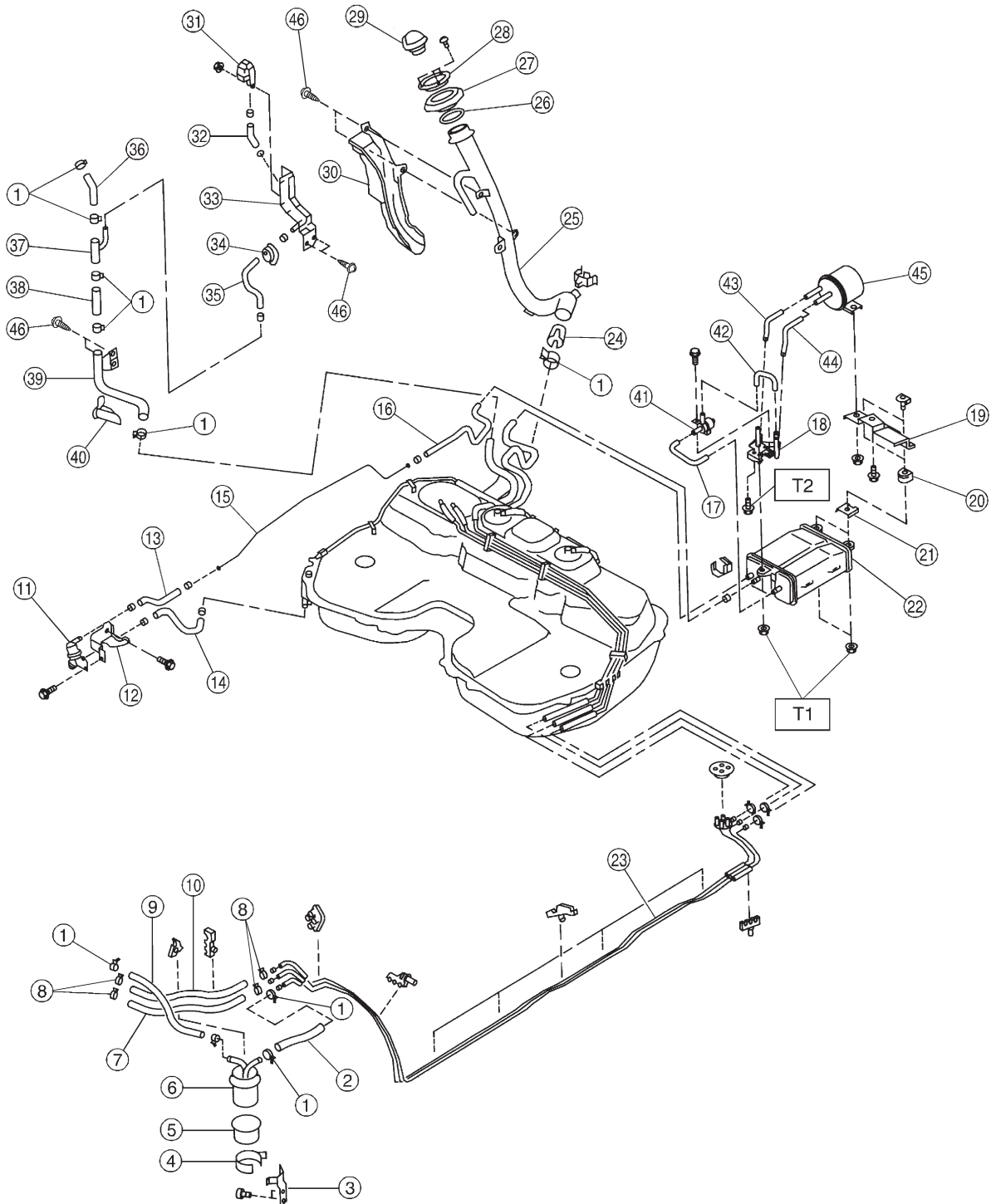
T1: 4.4±1.5 (0.45±0.15, 3.3±1.1)

T2: 7.4±2.0 (0.75±0.2, 5.4±1.4)

T3: 33±10 (3.4±1.0, 25±7)

2. Fuel Line

A: 1800 cc MODEL



H2M1476A

2. Fuel Line

- ① Clamp

② Fuel delivery hose A

③ Fuel filter bracket

④ Fuel filter holder

⑤ Fuel filter cup

⑥ Fuel filter

⑦ Evaporation hose

⑧ Clip

⑨ Fuel delivery hose B

⑩ Fuel return hose

⑪ Roll over valve

⑫ Roll over valve bracket

⑬ Evaporation hose H

⑭ Evaporation hose I

⑮ Evaporation pipe B

⑯ Canister hose A

⑰ Canister hose B

⑱ Canister holder

⑲ Canister upper bracket

⑳ Cushion rubber

㉑ Canister lower bracket

㉒ Canister

㉓ Fuel pipe ASSY

㉔ Fuel filler valve

㉕ Fuel filler pipe

㉖ Packing
- ㉗ Ring A

㉘ Ring B

㉙ Fuel filler cap

㉚ Fuel filler pipe protector

㉛ Fuel tank pressure sensor

㉜ Fuel tank pressure sensor hose A

㉝ Fuel tank pressure sensor bracket

㉞ Grommet

㉟ Fuel tank pressure sensor hose B

㊱ Air ventilator hose A

㊲ Air ventilator pipe A

㊳ Air ventilator hose B

㊴ Air ventilator pipe B

㊵ Air ventilator pipe protector

㊶ Vent control solenoid valve

㊷ Vent control solenoid valve hose

㊸ Air filter hose A

㊹ Air filter hose B

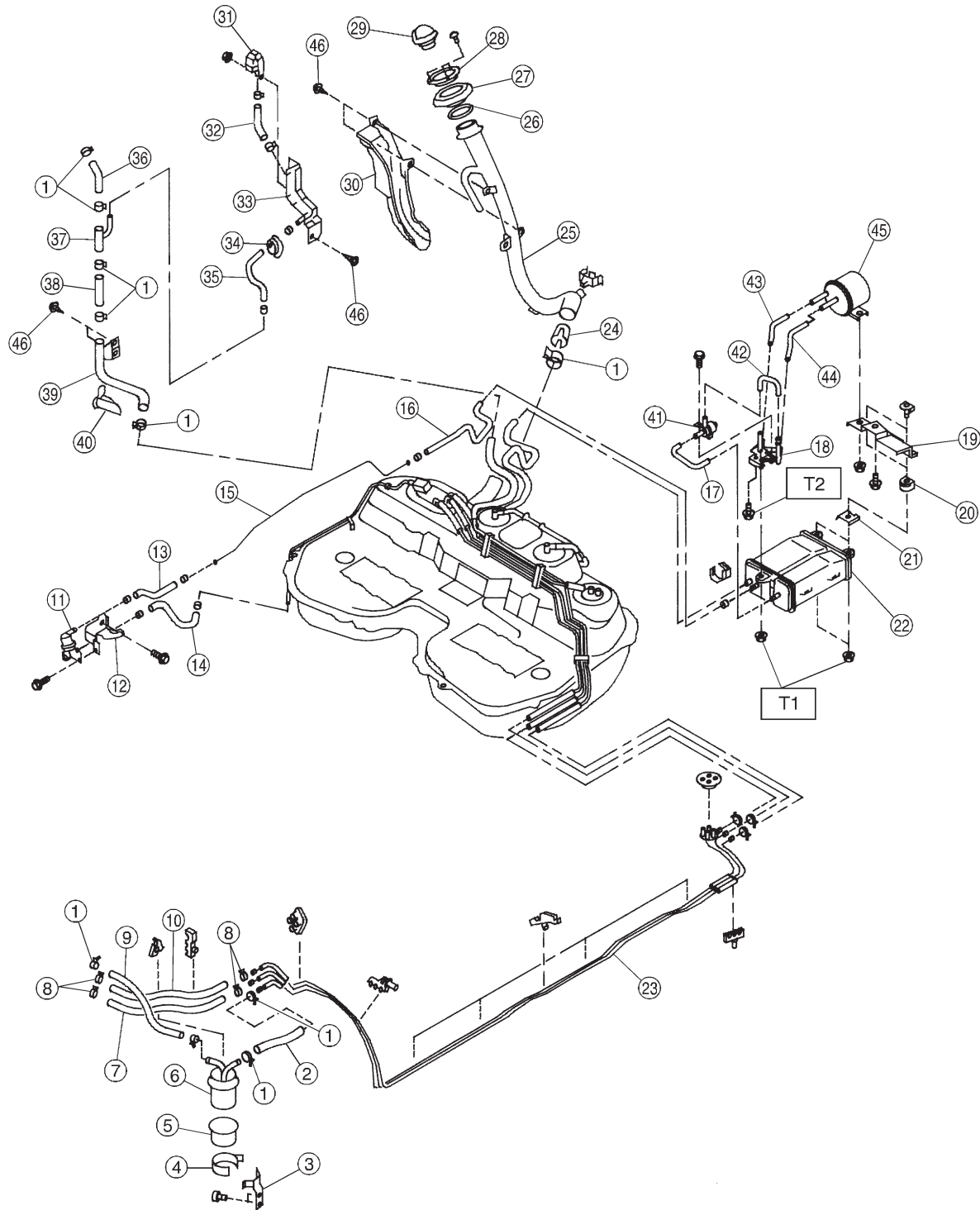
㊺ Air filter

㊻ Tapping screw
- Tightening torque: N·m (kg·m, ft·lb)

T1: 23±7 (2.3±0.7, 17±5.1)

T2: 25±7 (2.5±0.7, 18±5.1)

B: 2200 cc MODEL



H2M2314A

2. Fuel Line

- ① Clamp
- ② Fuel delivery hose A
- ③ Fuel filter bracket
- ④ Fuel filter holder
- ⑤ Fuel filter cup
- ⑥ Fuel filter
- ⑦ Evaporation hose
- ⑧ Clip
- ⑨ Fuel delivery hose B
- ⑩ Fuel return hose
- ⑪ Roll over valve
- ⑫ Roll over valve bracket
- ⑬ Evaporation hose H
- ⑭ Evaporation hose I
- ⑮ Evaporation pipe B
- ⑯ Canister hose A
- ⑰ Canister hose B
- ⑱ Canister holder
- ⑲ Canister upper bracket
- ⑳ Cushion rubber
- ㉑ Canister lower bracket
- ㉒ Canister
- ㉓ Fuel pipe ASSY
- ㉔ Fuel filler valve
- ㉕ Fuel filler pipe
- ㉖ Packing

- ㉗ Ring A
- ㉘ Ring B
- ㉙ Fuel filler cap
- ㉚ Fuel filler pipe protector
- ㉛ Fuel tank pressure sensor
- ㉜ Fuel tank pressure sensor hose A
- ㉝ Fuel tank pressure sensor bracket
- ㉞ Grommet
- ㉟ Fuel tank pressure sensor hose B
- ㊱ Air ventilator hose A
- ㊲ Air ventilator pipe A
- ㊳ Air ventilator hose B
- ㊴ Air ventilator pipe B
- ㊵ Air ventilator pipe protector
- ㊶ Vent control solenoid valve
- ㊷ Vent control solenoid valve hose
- ㊸ Air filter hose A
- ㊹ Air filter hose B
- ㊺ Air filter
- ㊻ Tapping screw

Tightening torque: N·m (kg·m, ft·lb)

T1: 23±7 (2.3±0.7, 17±5.1)

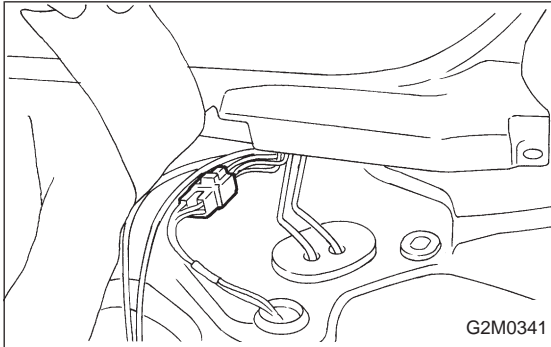
T2: 25±7 (2.5±0.7, 18±5.1)

1. On-Car Services

A: PRECAUTIONS

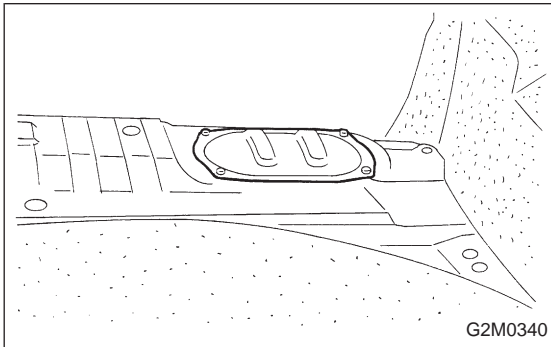
WARNING:

- Place “No fire” signs near the working area.
- Disconnect ground terminal from battery.
- Be careful not to spill fuel on the floor.



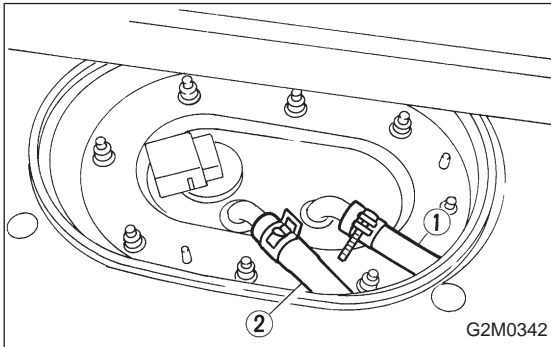
B: RELEASING OF FUEL PRESSURE

- 1) Remove rear seat, and turn up floor mat.
- 2) Disconnect connector from fuel tank.
- 3) Start the engine, and run it until it stalls.
- 4) After the engine stalls, crank it for five more seconds.
- 5) Turn ignition switch OFF.

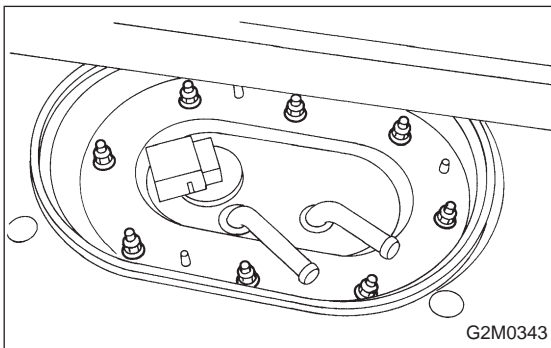


C: DRAINING OF FUEL

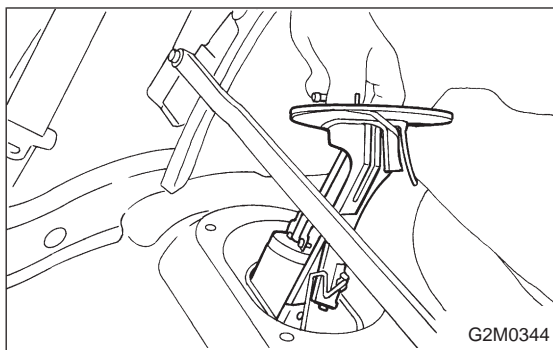
- 1) Remove rear seat and seat back.
- 2) Remove access hole lid.
- 3) Disconnect connector from fuel pump.
- 4) Release fuel pressure. <Ref. to 2-8 [W1B0].>



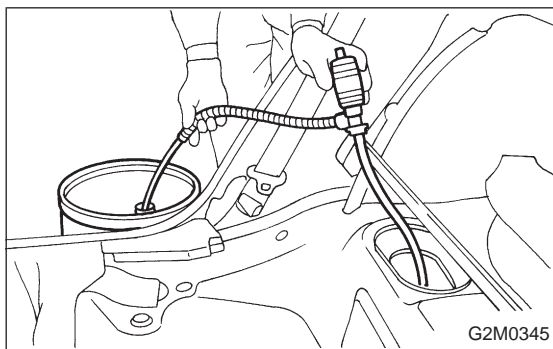
- 5) Disconnect fuel delivery hose ① and return hose ②.



- 6) Remove nuts which install fuel pump assembly onto fuel tank.



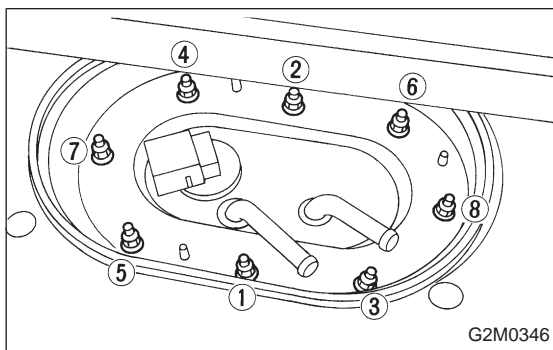
7) Take off fuel pump from fuel tank.



8) Drain fuel from fuel tank by using a hand pump.

WARNING:

Do not use a motor pump when draining fuel.

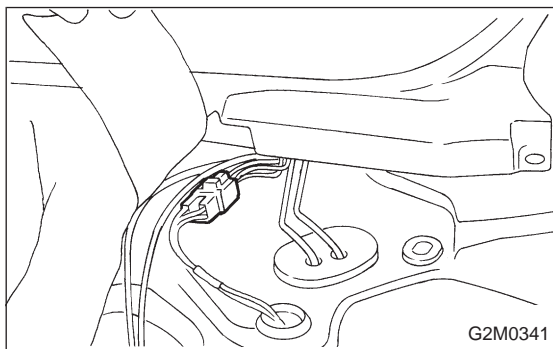


9) After draining fuel, reinstall fuel pump.

Tighten nuts in numerical sequence shown in Figure to specified torque.

Tightening torque:

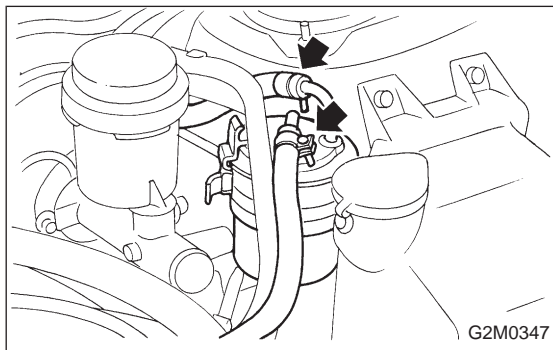
$4.4 \pm 1.5 \text{ N} \cdot \text{m}$ ($0.45 \pm 0.15 \text{ kg} \cdot \text{m}$, $3.3 \pm 1.1 \text{ ft} \cdot \text{lb}$)



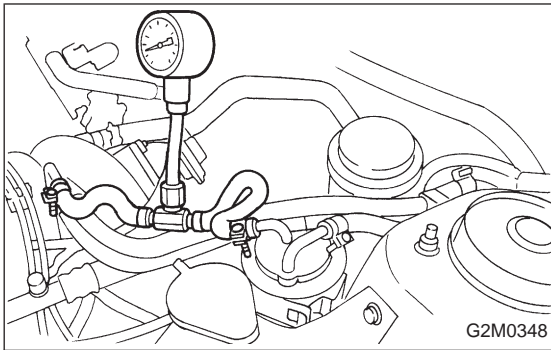
D: MEASUREMENT OF FUEL PRESSURE

1) Release fuel pressure. <Ref. to 2-8 [W1B0].>

2) Connect connector to fuel tank.



3) Disconnect fuel delivery hose from fuel filter, and connect fuel pressure gauge.



- 4) Start the engine.
- 5) Measure fuel pressure while disconnecting pressure regulator vacuum hose from collector chamber.

Fuel pressure:

235 — 265 kPa (2.4 — 2.7 kg/cm², 34 — 38 psi)

- 6) After connecting pressure regulator vacuum hose, measure fuel pressure.

Fuel pressure:

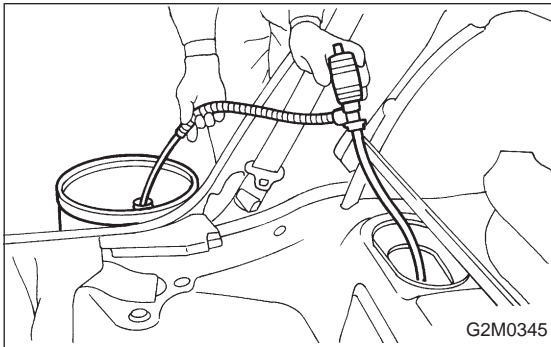
177 — 206 kPa (1.8 — 2.1 kg/cm², 26 — 30 psi)

WARNING:

Before removing fuel pressure gauge, release fuel pressure.

NOTE:

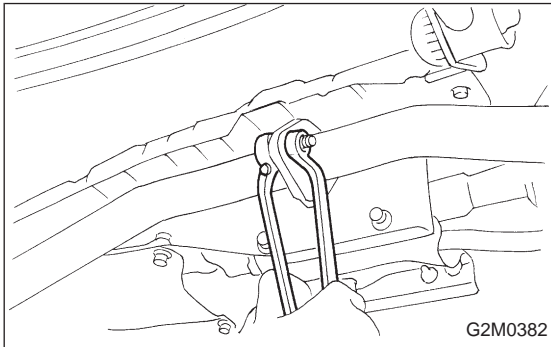
If out of specification as measured at step 6), check or replace pressure regulator and pressure regulator vacuum hose.



2. Fuel Tank

A: REMOVAL

- 1) Release fuel pressure. <Ref. to 2-8 [W1B0].>
- 2) Drain fuel from fuel tank. <Ref. to 2-8 [W1C0].>



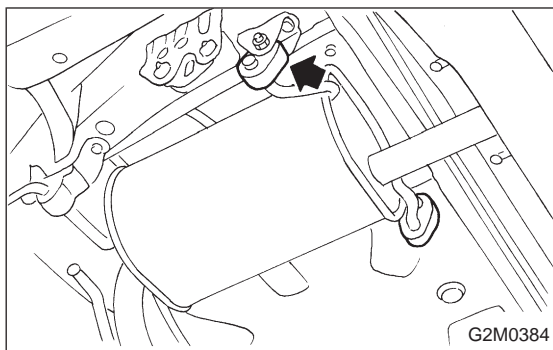
- 3) Remove rear exhaust pipe.

- (1) Lift-up the vehicle.
- (2) Separate rear exhaust pipe from front catalyst converter.
- (3) Separate rear exhaust pipe from muffler.
- (4) Remove hook from rubber cushion, and remove exhaust pipe.

NOTE:

To facilitate the removal of parts, apply a coat of SUBARU CRC5-56 (004301003)

<Ref. to 2-9 [W2A0].>

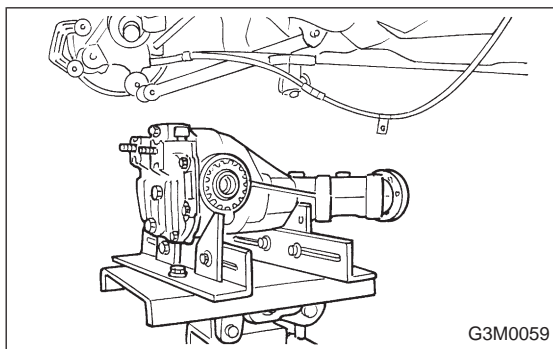


4) Remove muffler assembly.

NOTE:

To facilitate the removal of parts, apply a coat of SUBARU CRC5-56 (004301003)

<Ref. to 2-9 [W3A0].>



5) Remove rear differential assembly.

(1) Remove rear axle shafts from rear differential assembly.

(2) Remove rear differential front cover.

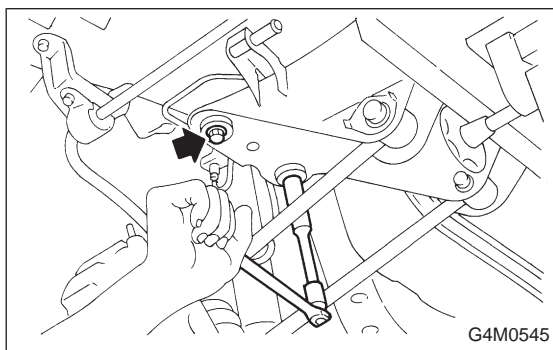
(3) Remove propeller shaft.

(4) Remove lower differential bracket.

(5) Set transmission jack under rear differential.

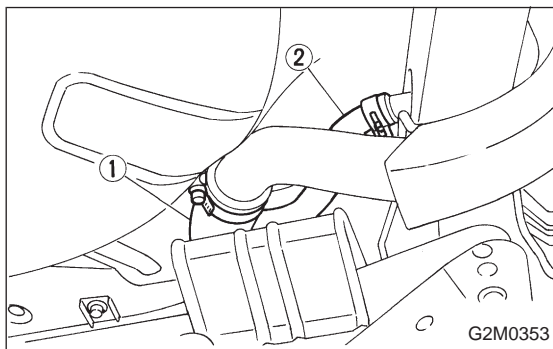
(6) Remove bolts which install rear differential onto transmission jack.

<Ref. to 3-4 [W2B0], [W3B0].>



6) Remove rear crossmember.

<Ref. to 4-1 [W10A0].>

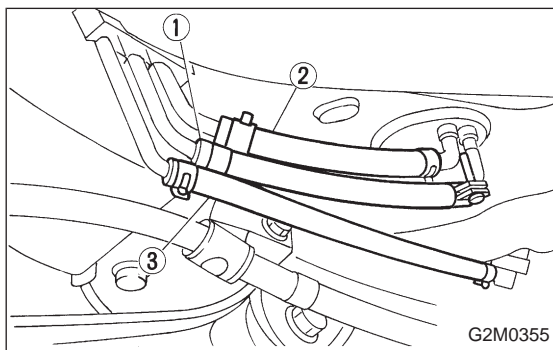


7) Loosen clamp, and disconnect fuel filler hose from pipe.

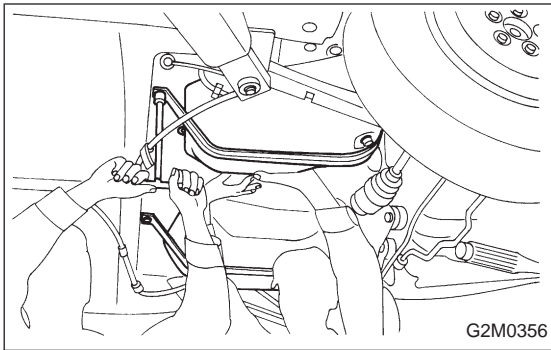
8) Loosen clamp, and disconnect air vent hose from air vent pipe.

① Fuel filler hose

② Air vent hose



9) Loosen clip and clamps, and disconnect fuel delivery hose ①, return hose ② and evaporation hose ③.



10) While holding fuel tank, remove bolts from bands and dismount fuel tank.

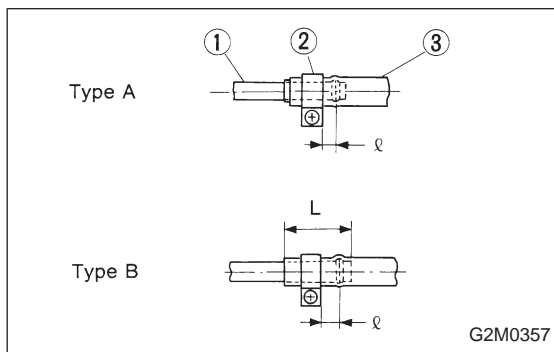
WARNING:

A helper is required to perform step 10).

B: INSTALLATION

Installation is in the reverse order of removal. Observe the following:

- 1) When installing fuel tank, have a helper hold fuel tank while installing bands.
- 2) Before tightening band mounting bolts, connect fuel system hoses.



3) Install hose and hold down clips at positions indicated in Figure.

Tightening torque:

$12.5 \pm 2.5 \text{ N} \cdot \text{m}$ ($1.27 \pm 0.25 \text{ kg} \cdot \text{m}$, $9.2 \pm 1.8 \text{ ft} \cdot \text{lb}$)

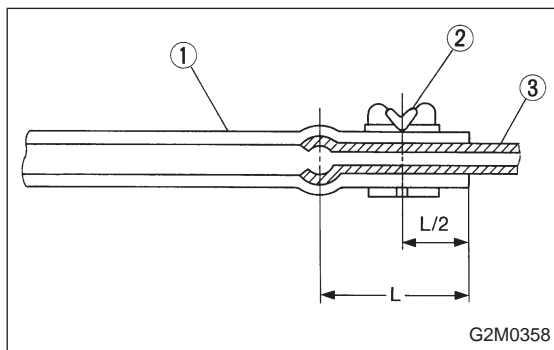
Type A: When fitting length is specified.

Type B: When fitting length is not specified.

- ① Fitting
- ② Clamp
- ③ Hose

$l : 2.5 \pm 1.5 \text{ mm}$ ($0.098 \pm 0.059 \text{ in}$)

$L : 22.5 \pm 2.5 \text{ mm}$ ($0.886 \pm 0.059 \text{ in}$)



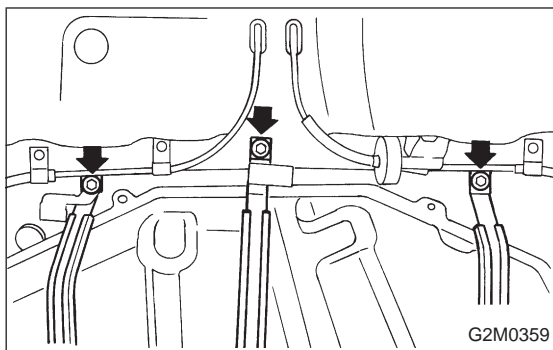
- ① Hose
- ② Clip
- ③ Pipe

Fuel return hose:

$L = 22.5 \pm 2.5 \text{ mm}$ ($0.098 \pm 0.059 \text{ in}$)

Evaporation hose:

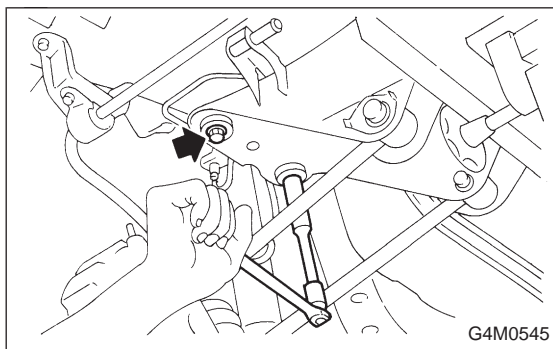
$L = 17.5 \pm 2.5 \text{ mm}$ ($0.689 \pm 0.098 \text{ in}$)



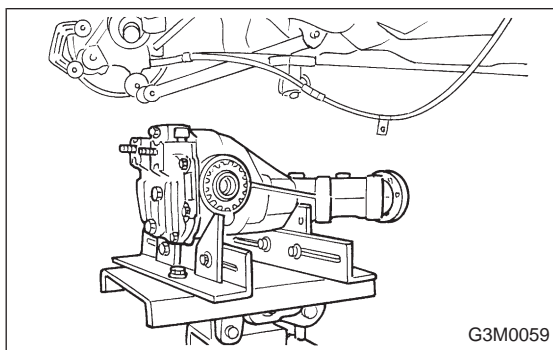
4) Tighten band mounting bolts.

Tightening torque:

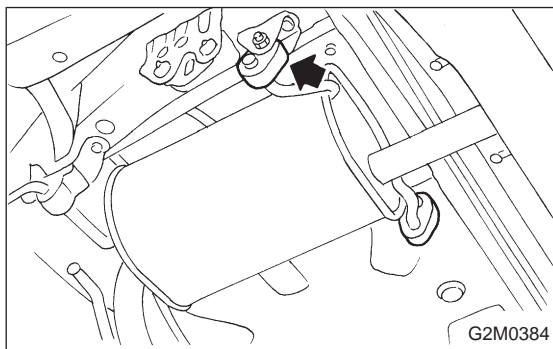
$23.5 \pm 0.5 \text{ N} \cdot \text{m}$ ($2.40 \pm 0.05 \text{ kg} \cdot \text{m}$, $17.4 \pm 0.4 \text{ ft} \cdot \text{lb}$)



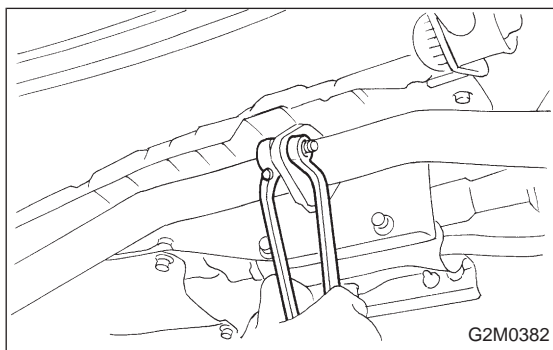
5) Install rear crossmember. <Ref. to 4-1 [W10C0].>



6) Install rear differential assembly. <Ref. to 3-4 [W2F0], [W3F0].>

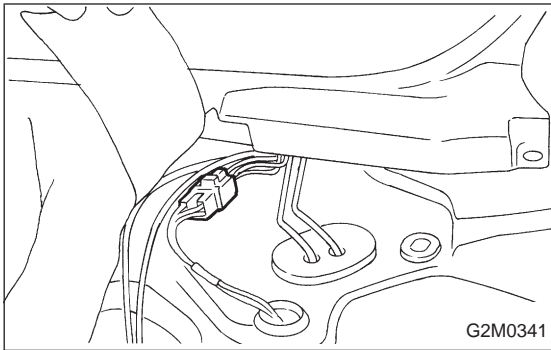


7) Install muffler assembly.

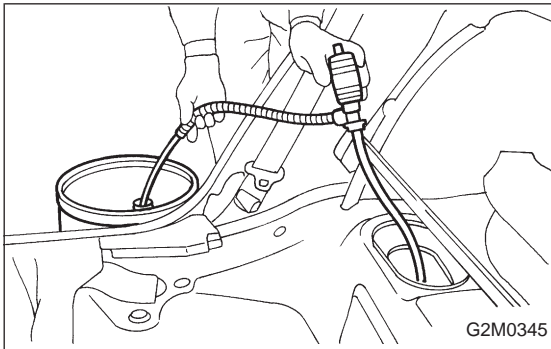


8) Install heat sealed cover.

9) Install rear exhaust pipe.



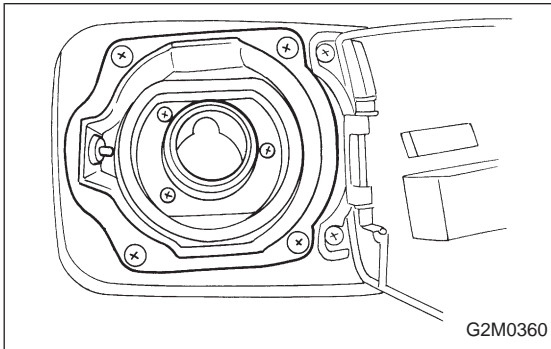
- 10) Lower the vehicle, and connect connector to fuel pump.
- 11) Install access hole lid.
- 12) Install rear seat back and rear seat.



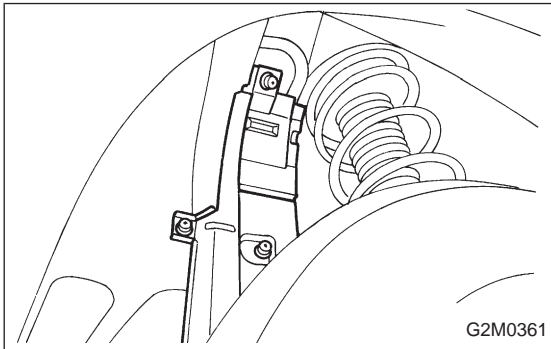
3. Fuel Filler Pipe

A: REMOVAL

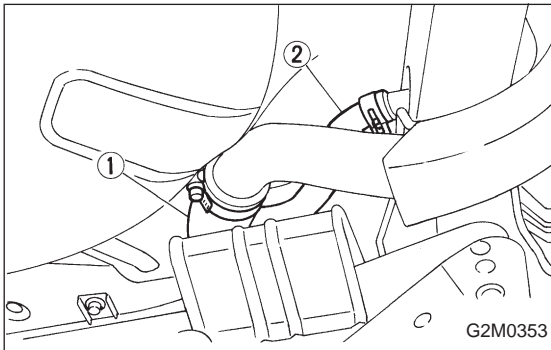
- 1) Release fuel pressure. <Ref. to 2-8 [W1B0].>
- 2) Drain fuel from fuel tank. <Ref. to 2-8 [W1C0].>



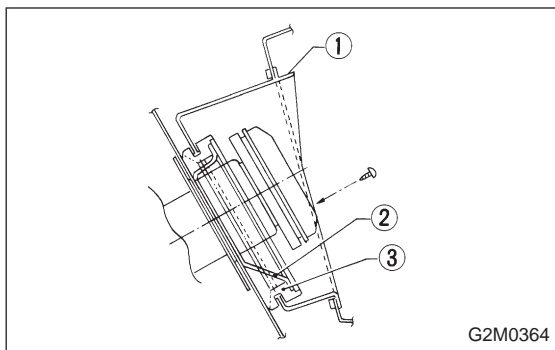
- 3) Remove right rear wheel.
- 4) Open fuel filler flap and remove filler cap.
- 5) Remove screws holding packing in place.



- 6) Lift-up the vehicle.
- 7) Remove fuel filler pipe protector.



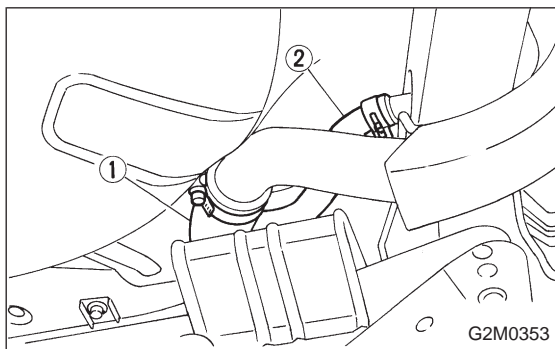
- 8) Remove clip, and separate air vent hose from pipe.
- 9) Loosen clamp, and separate fuel filler hose from pipe.
- ① Fuel filler hose
- ② Air vent hose
- 10) Remove fuel filler pipe to under side of the vehicle.

**B: INSTALLATION**

- 1) Hold fuel filler flap open.
- 2) Set fuel saucer ① with rubber packing ③, and insert fuel filler pipe into hole from the inner side of apron.
- 3) Align holes in fuel filler pipe neck and set cup ②, and tighten screws.

NOTE:

If edges of rubber packing are folded toward the inside, straighten it with a screwdriver.



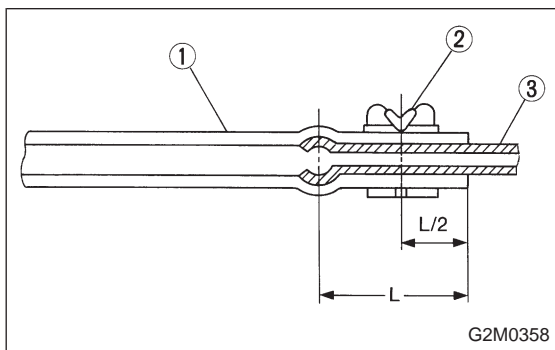
- 4) Insert fuel filler hose approximately 25 to 30 mm (0.98 to 1.18 in) over the lower end of fuel filler pipe and tighten clamp.

① Fuel filler hose

② Air vent hose

CAUTION:

Do not allow clips to touch air vent hose and rear suspension crossmember.



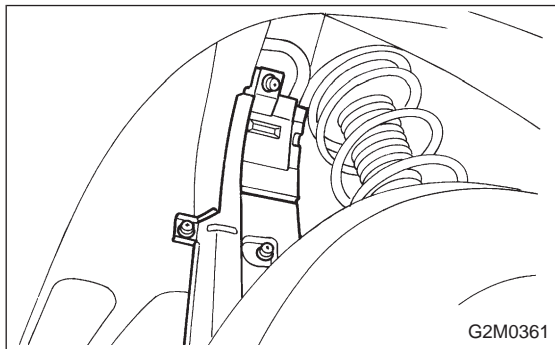
- 5) Insert air vent hose approximately 25 to 30 mm (0.98 to 1.18 in) into the lower end of air vent pipe and hold clip.

① Hose

② Clip

③ Pipe

$L = 27.5 \pm 2.5 \text{ mm (1.083} \pm 0.098 \text{ in)}$



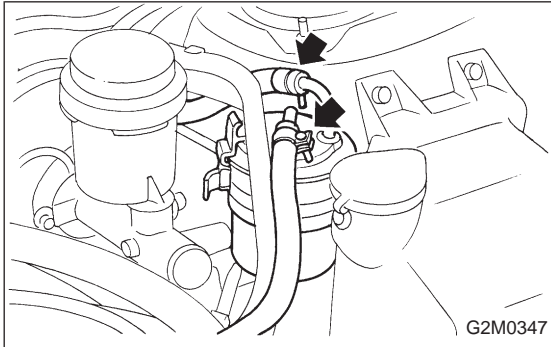
- 6) Install fuel filler pipe protector.

- 7) Install right rear wheel.

4. Fuel Filter

A: REMOVAL

1) Release fuel pressure. <Ref. to 2-8 [W1B0].>



- 2) Disconnect fuel hoses from fuel filter.
- 3) Remove filter from holder.

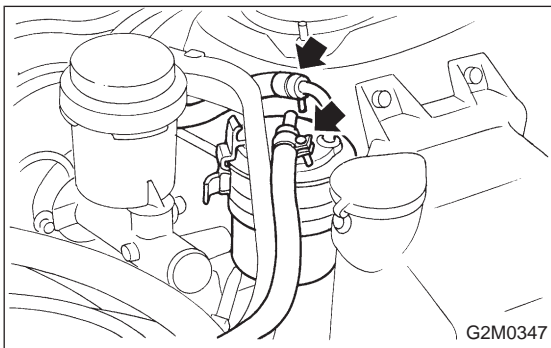
B: INSPECTION

- 1) Check the inside of fuel filter for dirt and water sediment.
- 2) If it is clogged, or if replacement interval has been reached, replace it.
- 3) If water is found in it, shake and expel the water from inlet port.

C: INSTALLATION

CAUTION:

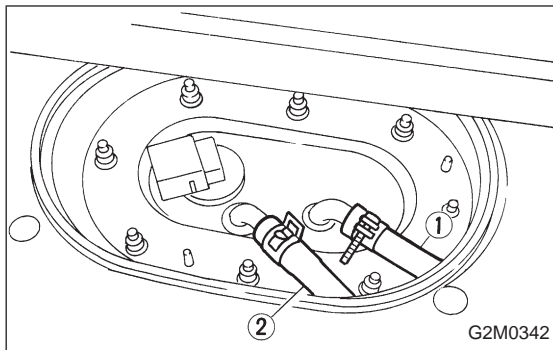
- If fuel hoses are damaged at the connecting portion, replace it with a new one.
- If clamps are badly damaged, replace with new ones.



- 1) Installation is in the reverse order of removal.
- 2) Tighten hose clamp screws.

Tightening torque:

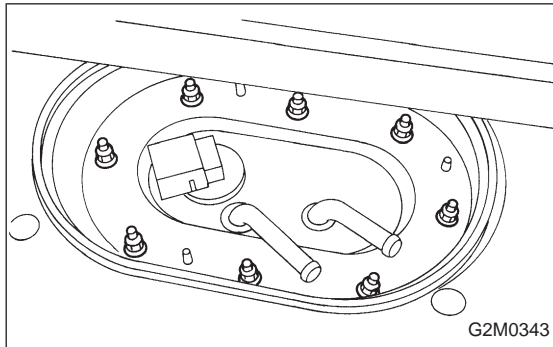
12.5±2.5 N·m (1.27±0.25 kg-m, 9.2±1.8 ft-lb)



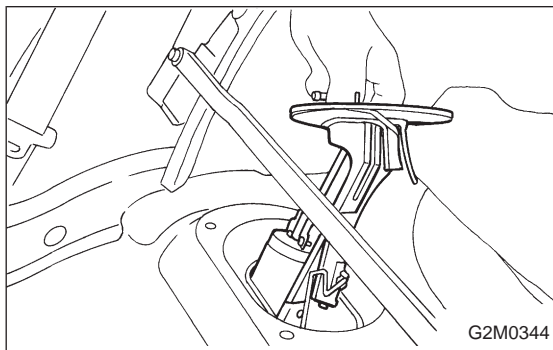
5. Fuel Pump

A: REMOVAL

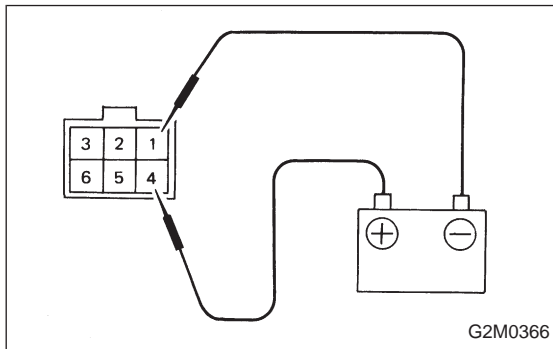
- 1) Release fuel pressure. <Ref. to 2-8 [W1B0].>
- 2) Disconnect fuel delivery hose ① and return hose ②.



- 3) Remove nuts which install fuel pump onto fuel tank.



- 4) Take off fuel pump from fuel tank.

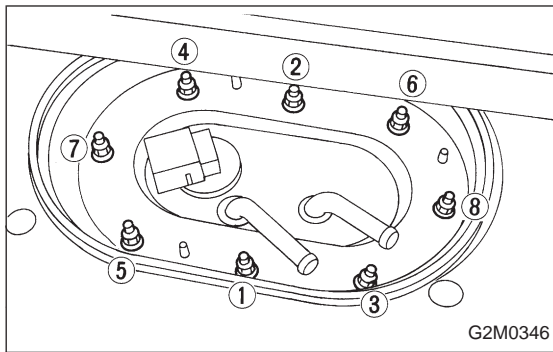


B: INSPECTION

Connect lead harness to connector terminal of fuel pump, and apply a 12 V power supply to check whether the pump operate.

WARNING:

- Wipe off the fuel completely.
- Keep battery as far apart from fuel pump as possible.
- Be sure to turn the 12 V supply ON and OFF on the battery side.
- Do not run fuel pump for a long time under non-load condition.



C: INSTALLATION

Installation is in the reverse order of removal. Observe the following:

- (1) Always use new gaskets.
- (2) Ensure sealing portion is free from fuel or foreign particles before installation.
- (3) Tighten nuts in numerical sequence shown in Figure to specified torque.

Tightening torque:

$4.4 \pm 1.5 \text{ N} \cdot \text{m}$ ($0.45 \pm 0.15 \text{ kg} \cdot \text{m}$, $3.3 \pm 1.1 \text{ ft} \cdot \text{lb}$)

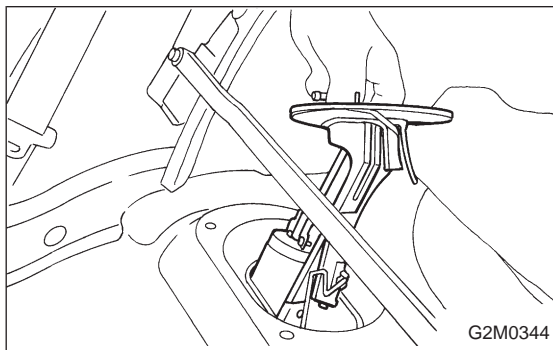
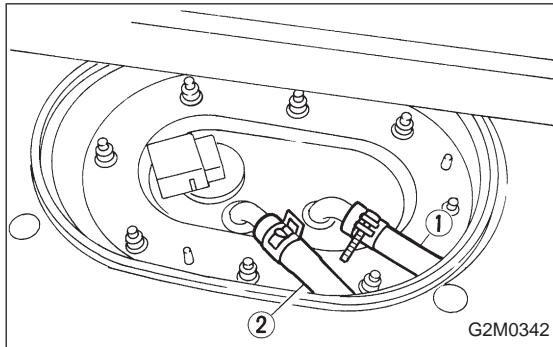
6. Fuel Meter Unit

A: REMOVAL

NOTE:

Fuel meter unit is built in fuel pump assembly.

- 1) Release fuel pressure. <Ref. to 2-8 [W1B0].>
- 2) Disconnect fuel delivery hose ① and return hose ②.



- 3) Remove nuts which install fuel pump onto fuel tank.
- 4) Take off fuel pump assembly.

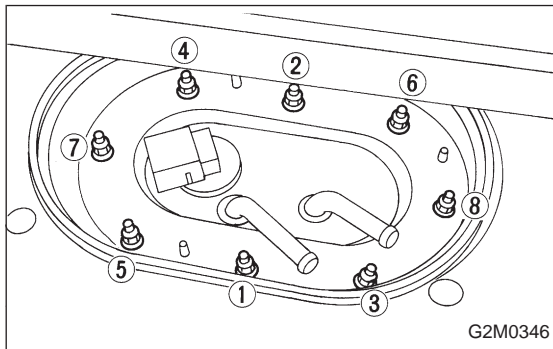
B: INSTALLATION

Installation is in the reverse order of removal. <Ref. to 2-8 [W5C0].>

Tighten nuts in numerical sequence shown in Figure to specified torque.

Tightening torque:

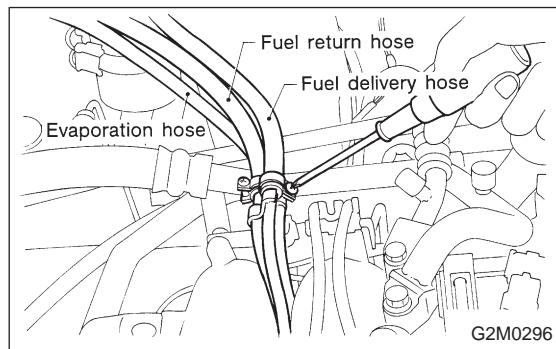
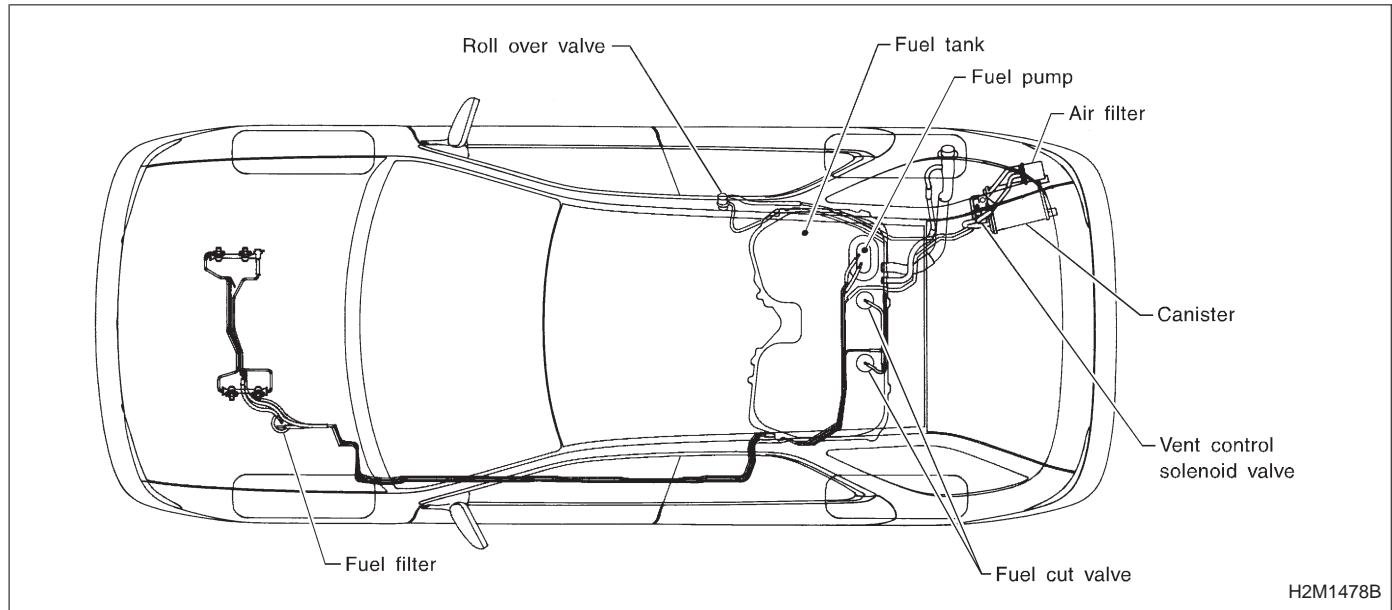
$4.4 \pm 1.5 \text{ N} \cdot \text{m}$ ($0.45 \pm 0.15 \text{ kg} \cdot \text{m}$, $3.3 \pm 1.1 \text{ ft} \cdot \text{lb}$)



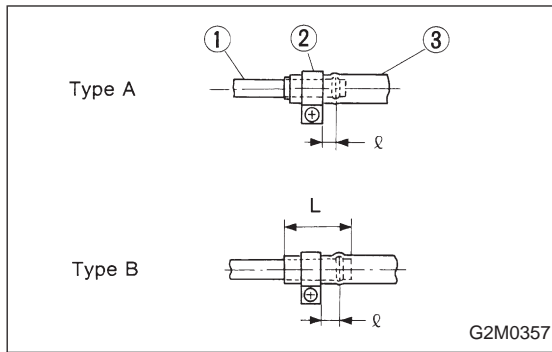
7. Fuel Delivery, Return and Evaporation Lines

A: REMOVAL

- 1) Release fuel pressure. <Ref. to 2-8 [W1B0].>
- 2) Remove inner trim, insulator and rear seat. <Ref. to 5-3 [W2A0].>
- 3) Remove fuel delivery pipes and hoses, fuel return pipes and hoses, and evaporation pipes and hoses.



- 4) In engine compartment, detach fuel delivery hose return hoses and evaporation hose.



B: INSTALLATION

Installation is in the reverse order of removal.

1) Connect fuel delivery hose to pipe with an overlap of 20 to 25 mm (0.79 to 0.98 in).

Type A: When fitting length is specified.

Type B: When fitting length is not specified.

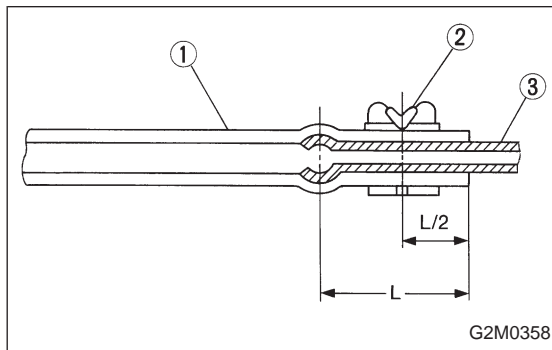
① Fitting

② Clamp

③ Hose

ℓ : 2.5 ± 1.5 mm (0.098 ± 0.059 in)

L : 22.5 ± 2.5 mm (0.886 ± 0.098 in)



2) Connect evaporation hose to pipe by approx. 15 mm (0.59 in) from hose end.

① Hose

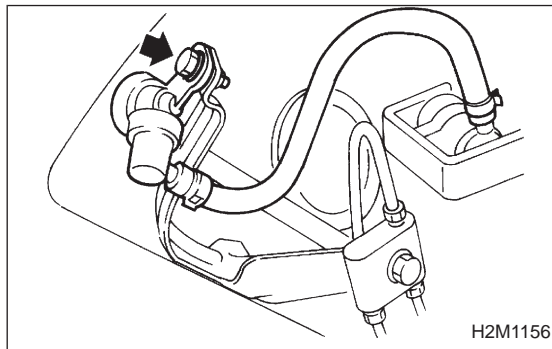
② Clip

③ Pipe

L = 17.5 ± 2.5 mm (0.689 ± 0.098 in)

CAUTION:

Be sure to inspect hoses and their connections for any leakage of fuel.



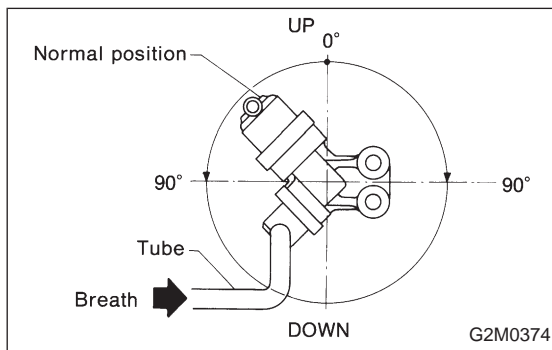
8. Roll Over Valve

A: REMOVAL

1) Lift-up the vehicle.

2) Remove roll over valve from bracket.

3) Disconnect hoses from roll over valve.

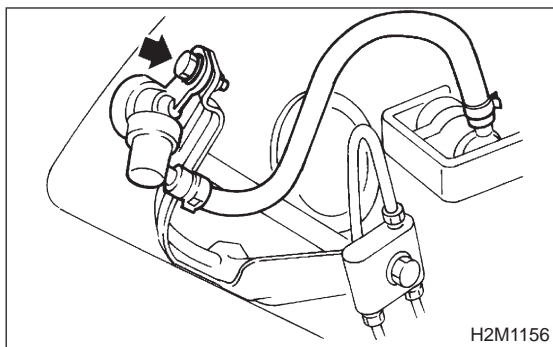


B: INSPECTION

1) Connect hoses to roll over valve as shown in Figure.

2) While blowing through open end of hose, tilt valve at least 90° left and right from normal position.

3) Ensure that there is no air flow when hose is tilted greater than 90°.

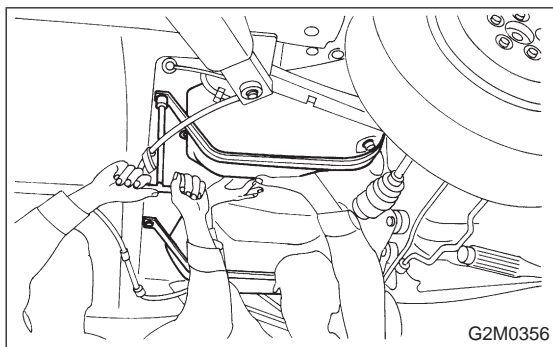


C: INSTALLATION

Installation is in the reverse order of removal.

CAUTION:

- Do not install top side of valve down.
- Before installing bracket on body, securely fit concave part of bracket to hole in body.



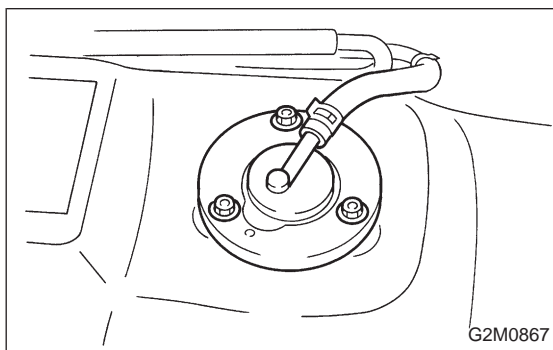
9. Fuel Cut Valve

A: REMOVAL AND INSTALLATION

- 1) Remove fuel tank. <Ref. to 2-8 [W2A0].>
- 2) Disconnect evaporation hose from fuel cut valve.
- 3) Remove fuel cut valve.
- 4) Installation is in the reverse order of removal procedure.

Tightening torque:

$4.4 \pm 1.5 \text{ N} \cdot \text{m}$ ($0.45 \pm 0.15 \text{ kg} \cdot \text{m}$, $3.3 \pm 1.1 \text{ ft} \cdot \text{lb}$)



1. Fuel System Trouble in General

Trouble and possible cause		Corrective action
1. Insufficient fuel supply to the injector		
1)	Fuel pump will not operate.	
	<input type="radio"/> Defective terminal contact.	Inspect connections, especially ground, and tighten securely.
	<input type="radio"/> Trouble in electromagnetic or electronic circuit parts.	Replace fuel pump.
2)	Lowering of fuel pump function.	Replace fuel pump.
3)	Clogged dust or water in the fuel filter.	Replace fuel filter, clean or replace fuel tank.
4)	Clogged or bent fuel pipe or hose.	Clean, correct or replace fuel pipe or hose.
5)	Air is mixed in the fuel system.	Inspect or retighten each connection part.
6)	Clogged or bent breather tube or pipe.	Clean, correct or replace air breather tube or pipe.
7)	Damaged diaphragm of pressure regulator.	Replace.
2. Leakage or blow out fuel		
1)	Loosened joints of the fuel pipe.	Retightening.
2)	Cracked fuel pipe, hose and fuel tank.	Replace.
3)	Defective welding part on the fuel tank.	Replace.
4)	Defective drain packing of the fuel tank.	Replace.
5)	Clogged or bent air breather tube or air vent tube.	Clean, correct or replace air breather tube or air vent tube.
3. Gasoline smell inside of compartment		
1)	Loose joints at air breather tube, air vent tube and fuel filler pipe.	Retightening.
2)	Defective packing air tightness on the fuel saucer.	Correct or replace packing.
3)	Cracked fuel separator.	Replace separator.
4)	Inoperable fuel pump modulator or circuit.	Replace.
4. Defective fuel meter indicator		
1)	Defective operation of fuel meter unit.	Replace.
2)	Defective operation of fuel meter.	Replace.
5. Noise		
1)	Large operation noise or vibration of fuel pump.	Replace.

NOTE:

● When the vehicle is left unattended for an extended period of time, water may accumulate in the fuel tank. To prevent water condensation:

- 1) Top off the fuel tank or drain the fuel completely.
- 2) Drain water condensation from the fuel filter.

● Refilling the fuel tank.

- 1) Refill the fuel tank while there is still some fuel left in the tank.

● Protecting the fuel system against freezing and water condensation.

- 1) Cold areas

In snow-covered areas, mountainous areas, skiing areas, etc. where ambient temperatures drop below 0°C (32°F) throughout the winter season, use an anti-freeze solution in the cooling system.

Refueling will also complement the effect of anti-freeze solution each time the fuel level drops to about one-half.

After the winter season, drain water which may have accumulated in the fuel filter and fuel tank in the manner same as that described under Affected areas below.

- 2) Affected areas

When water condensation is notched in the fuel filter, drain water from both the fuel filter and fuel tank or use a water removing agent (or anti-freeze solution) in the fuel tank.

● Observe the instructions, notes, etc., indicated on the label affixed to the anti-freeze solution (water removing agent) container before use.