

HEATER AND VENTILATOR

4-6

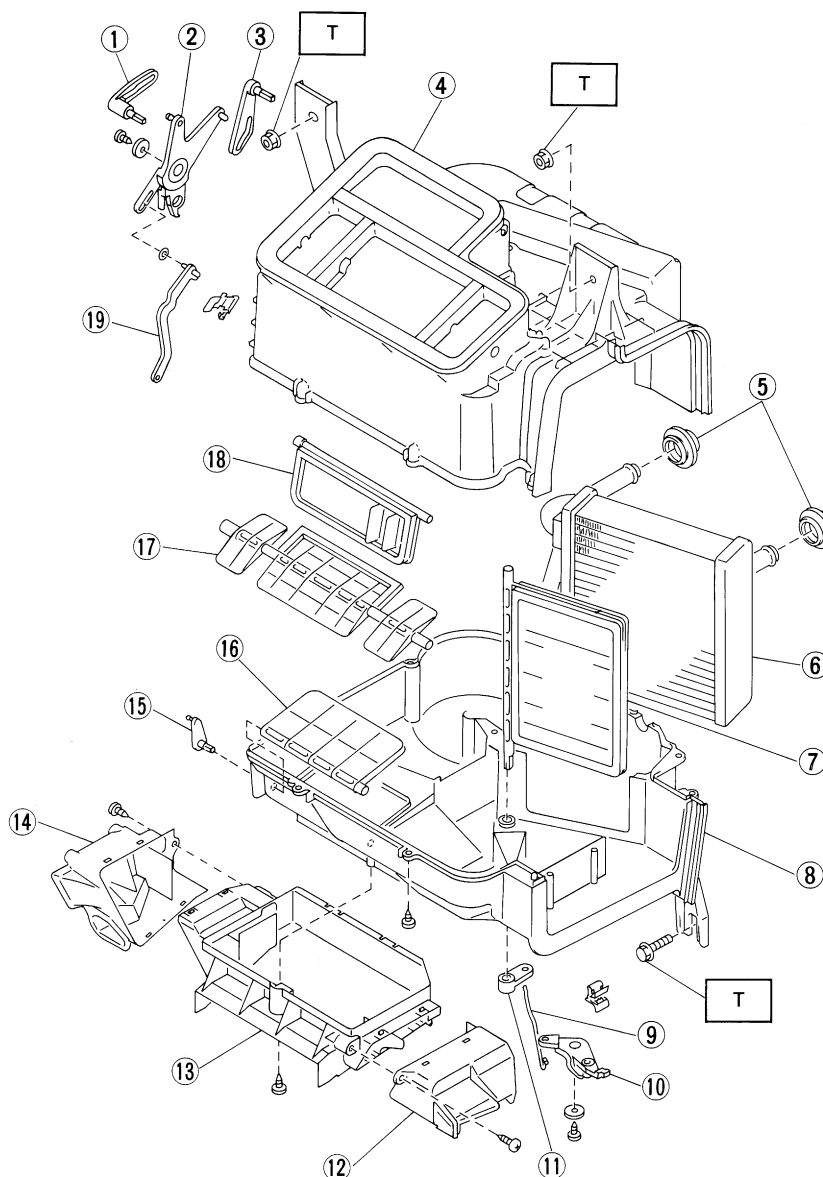
	Page
S SPECIFICATIONS AND SERVICE DATA	2
1. Heater and Ventilation	2
C COMPONENT PARTS	3
1. Heater Unit.....	3
2. Intake Unit.....	4
3. Control Unit.....	5
W SERVICE PROCEDURE	6
1. Supplemental Restraint System "Airbag"	6
2. Heater Unit.....	6
3. Blower Motor Assembly	7
4. Control Unit.....	7
5. Intake Door Motor.....	10

1. Heater and Ventilation

A: SPECIFICATIONS

Item		Specifications	Condition
Heating capacity		4.652 kW (4,000 kcal/h, 15,872 BTU/h) or more	● Mode selector switch : HEAT
			● Temp. control switch : FULL HOT
			● Temperature difference between hot water and inlet air : 65°C (149°F)
			● Hot water flow rate : 360 ℓ (95.1 US gal, 79.2 Imp gal)/h
Air flow rate		270 m ³ (9,534 cu ft)/h	Heat mode (FRESH), FULL HOT at 12.5 V
Max air flow rate		480 m ³ (16,949 cu ft)/h	● Temperature control switch : FULL COLD
			● Blower fan speed : 4th position
			● Mode selector switch : RECIRC (MAX. A/C)
Heater core size (height x length x width x thickness)		192.4 x 152.0 x 25.0 x 1.8 mm (7.57 x 5.98 x 0.984 x 0.071 in)	—
Blower motor	Type	Magnet motor 230 W or less	at 12 V
	Fan type and size (diameter x width)	Sirocco fan type 150 x 75 mm (5.91 x 2.95 in)	—

1. Heater Unit



G4M0551

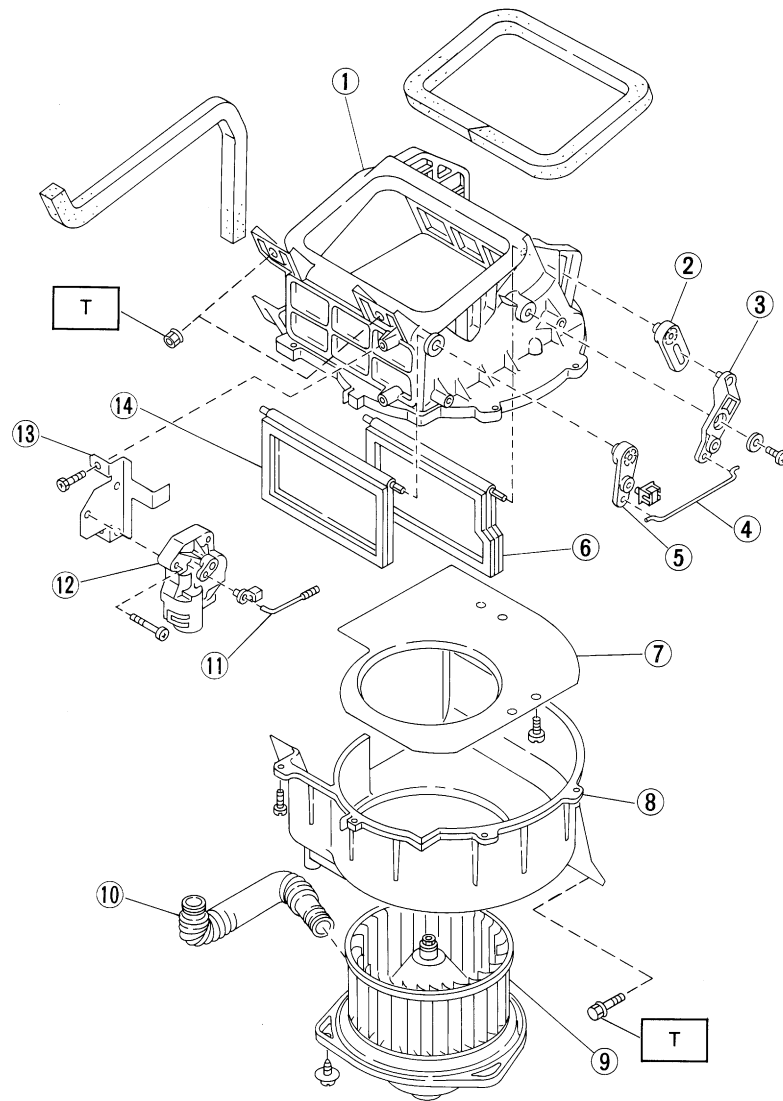
- ① Vent lever
- ② Side link
- ③ DEF. lever
- ④ Heater case upper
- ⑤ Heater grommet
- ⑥ Heater core
- ⑦ Mix door
- ⑧ Heater case lower

- ⑨ Mix rod
- ⑩ Mix link
- ⑪ Mix lever
- ⑫ Foot duct (RH)
- ⑬ Foot duct (CTR)
- ⑭ Foot duct (LH)
- ⑮ Foot lever lower
- ⑯ Foot door

- ⑰ Vent door
- ⑱ DEF. door
- ⑲ Foot lever upper

Tightening torque: N·m (kg·m, ft·lb)
T: 7.35±1.96
(0.750±0.200, 5.421±1.446)

2. Intake Unit



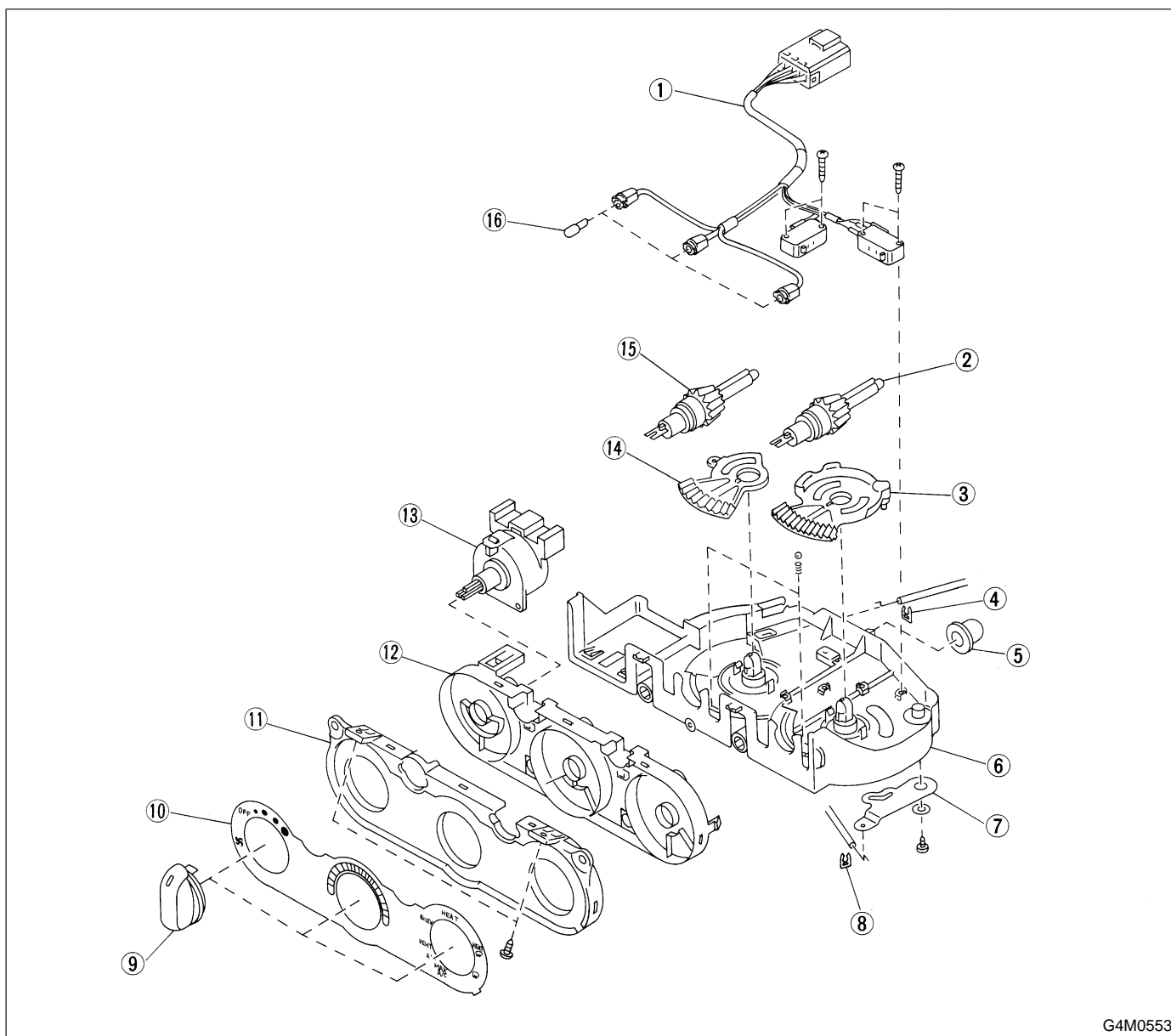
G4M0552

- ① Intake unit case upper
- ② Lever (A)
- ③ Link
- ④ Rod
- ⑤ Lever (B)
- ⑥ Door (A)
- ⑦ Bell mouth-intake

- ⑧ Intake unit case lower
- ⑨ Blower motor ASSY
- ⑩ Hose
- ⑪ Actuator rod
- ⑫ Actuator motor
- ⑬ Actuator bracket
- ⑭ Door (B)

Tightening torque: N·m (kg·m, ft·lb)
T: 7.35±1.96
(0.750±0.200, 5.421±1.446)

3. Control Unit



G4M0553

- | | | |
|-----------------|---------------------|---------------|
| ① Harness ASSY | ⑦ Link | ⑫ Light box |
| ② Shaft | ⑧ Clip | ⑬ Switch ASSY |
| ③ Mode lever LH | ⑨ Control dial knob | ⑭ TEMP. lever |
| ④ Clip | ⑩ Plate | ⑮ Shaft |
| ⑤ Grommet | ⑪ Base plate | ⑯ Bulb |
| ⑥ Base plate | | |

1. Supplemental Restraint System "Airbag"

Airbag system wiring harness is routed near the instrument panel, heater unit, blower motor and control unit.

CAUTION:

- All Airbag system wiring harness and connectors are colored yellow. Do not use electrical test equipment on these circuit.
- Be careful not to damage Airbag system wiring harness when servicing the instrument panel, heater unit, blower motor and control unit.

2. Heater Unit

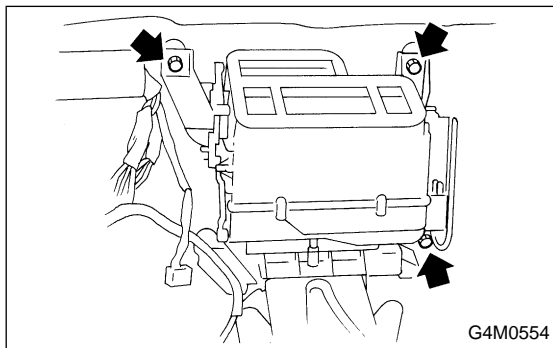
A: REMOVAL

- 1) Disconnect GND cable from battery.
- 2) Remove heater hoses (inlet, outlet) in engine compartment.

NOTE:

Drain as much coolant from heater unit as possible, and plug disconnected hose with cloth.

- 3) Disconnect temperature control cable and mode door control cable from heater unit.
<Ref. to 5-4 [W1A0].>
- 4) Remove instrument panel.
<Ref. to 5-4 [W1A0].>
- 5) Remove steering support beam.
<Ref. to 5-1 [C600].>
- 6) Remove cooling unit.
<Ref. to 4-7 [W14A0].>

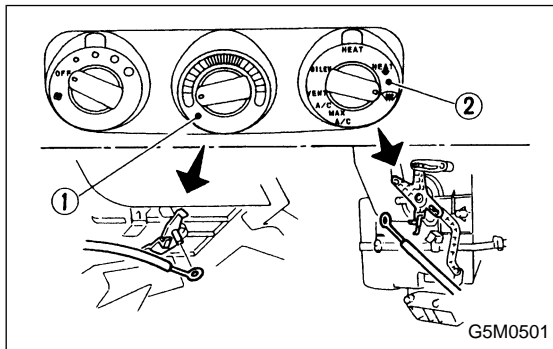
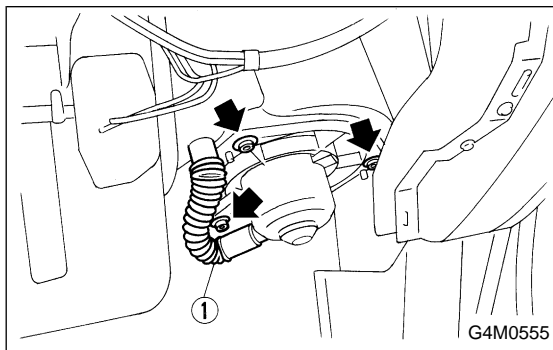
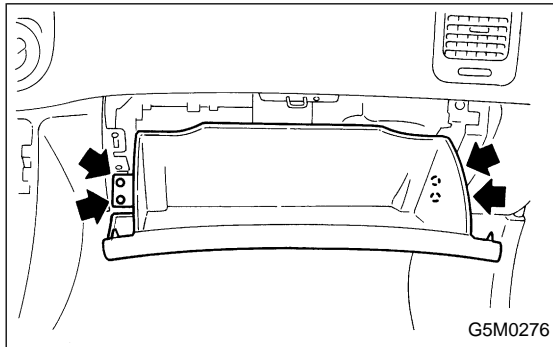


- 7) Remove heater unit.

B: INSTALLATION

Installation is in the reverse order of removal.

Fitted length of heater hose over pipe:
25 — 30 mm (0.98 — 1.18 in)

**3. Blower Motor Assembly****A: REMOVAL**

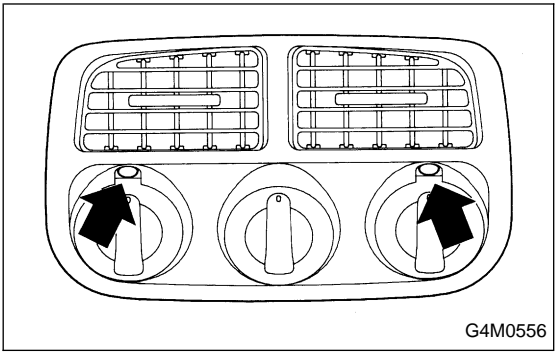
- 1) Disconnect GND cable from battery.
- 2) Remove glove box.
- 3) Disconnect blower motor harness connector.
- 4) Disconnect aspirator pipe ①.
- 5) Remove blower motor mounting screw.
- 6) Remove blower motor assembly.

4. Control Unit**A: REMOVAL**

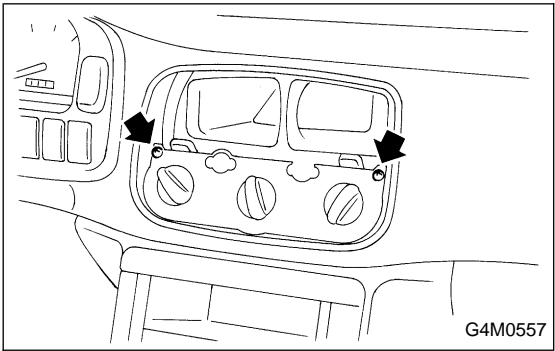
- 1) Disconnect GND cable from battery.
- 2) Set temperature control switch ① to "FULL COLD" and mode selector switch ② to "DEF" position.
- 3) Remove temperature control cable and mode door control cable from heater unit.

NOTE:

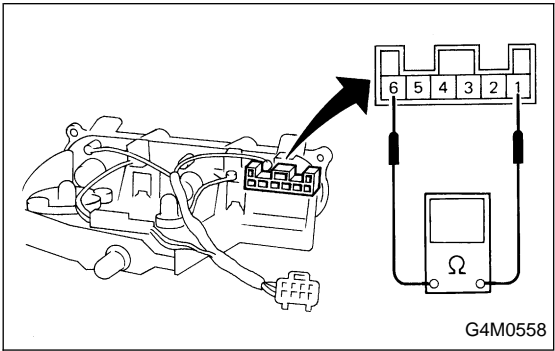
- Do not attempt to move links during installation.
- Before control unit installation, set temperature control switch to "FULL COLD" and mode selector switch to "DEF" position.



4) Remove center panel.



5) Remove control unit assembly and disconnect connector.



B: INSPECTION

1. FAN SWITCH

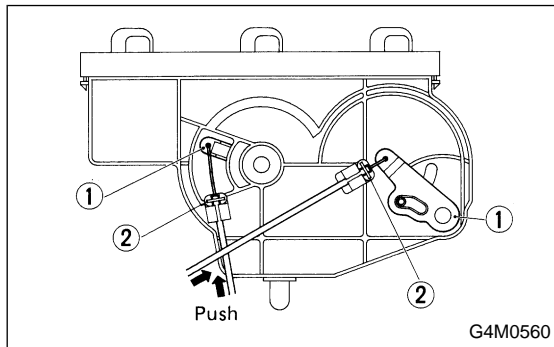
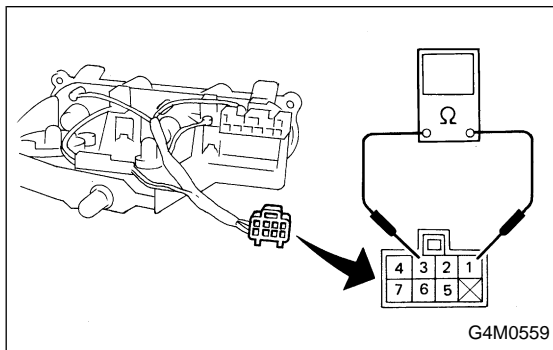
Check continuity between terminals at each switch position.

Switch position	Terminals					
	1	2	3	4	5	6
Low	○	○				○
Med. 1	○		○			○
Med. 2	○			○		○
High	○				○	○

2. CONTROL UNIT

- 1) Ignition switch is turned OFF.
- 2) Disconnect connector from control unit.
- 3) Check circuit continuity between each terminal.

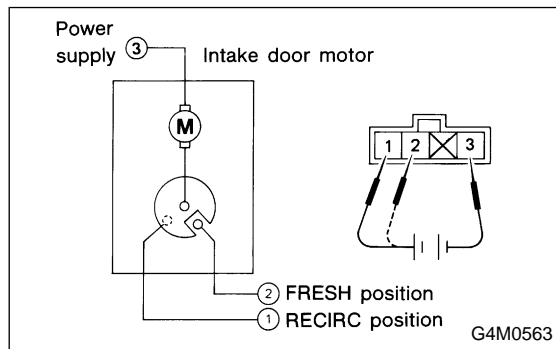
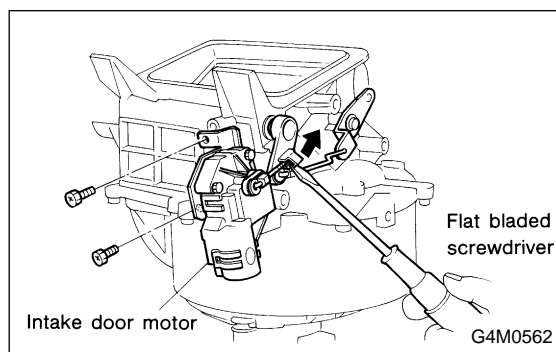
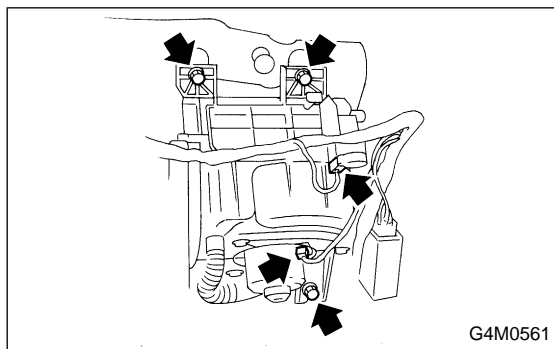
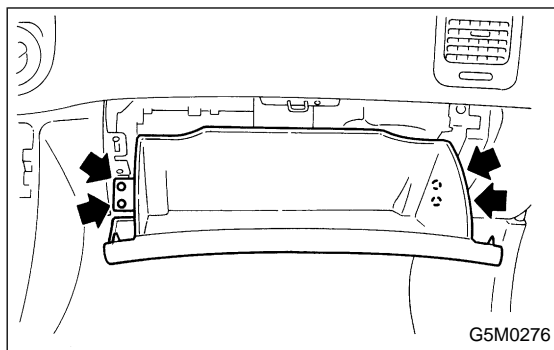
Terminal	Mode selector switch position			Illumi.
	MAX A/C (RECIRC)	Except MAX A/C (FRESH)	<ul style="list-style-type: none"> ● MAX A/C ● A/C (A/C ON) 	
1	○	○		
2	○			
3		○		
4			○	
5				○
6				○
7			○	

**C: ADJUSTMENT**

- 1) Operate temperature control switch to "FULL COLD" and mode selector switch to "MAX A/C" position.
- 2) Install control cable to lever ①. While pushing outer cable, secure control cable with clip ②.

D: INSTALLATION

Installation is in the reverse order of removal.



5. Intake Door Motor

A: REMOVAL

- 1) Disconnect GND cable from battery.
- 2) Remove glove box.
- 3) Remove heater duct (or cooling unit with A/C model).
<Ref. to 4-7 [W14A0].>

- 4) Remove intake unit from the vehicle.

- 5) Remove screws which secure intake door motor to intake unit.

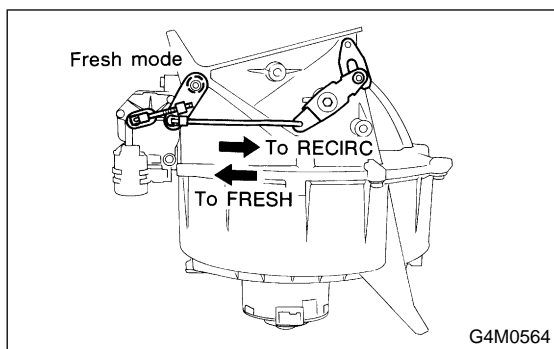
NOTE:

Ensure that RECIRC switch is set to "ON".

B: INSPECTION

When approx. 12 V is applied to the intake door motor terminals, intake door motor operates as follows.

Intake door motor position	Terminal		Intake door motor operation
	⊕	⊖	
FRESH	3	2	Door motor moved to FRESH position.
RECIRC		1	Door motor moved to RECIRC position.



- 1) Connect harness to intake door motor.
- 2) Turn ignition switch to "ACC" and set RECIRC switch to "ON" switch to "RECIRC".

NOTE:

Ensure that intake door motor is set in the "RECIRC" mode.

- 3) Install intake door motor on intake unit.
- 4) Secure rod holder to link, and install link to intake unit.
- 5) Manually set rod in the "RECIRC" mode, and secure to rod holder.
- 6) Operate mode selector switch to ensure that system changes from intake air to "RECIRC" and from "RECIRC" to intake air in full-stroke range.

C: INSTALLATION

Installation is in the reverse order of removal.