

SEATS, SEAT BELTS, AND INTERIOR

5-3

	Page
C COMPONENT PARTS	2
1. Front Seat	2
2. Rear Seat (Sedan and Coupe)	3
3. Rear Seat (Wagon)	5
4. Front Seat Belts	6
5. Rear Seat Belts	7
6. Inner Accessories	8
7. Inner Trim	9
W SERVICE PROCEDURE	10
1. Front Seat	10
2. Rear Seat (Sedan and Coupe)	12
3. Rear Seat (Wagon)	14
4. Front Seat Belt	16
5. Rear Seat Belt	18
6. Front Pillar Upper Trim Panel	19
7. Rear Pillar Upper Trim Panel (Sedan and Coupe)	20
8. Rear Quarter Pillar Upper Trim Panel (Wagon)	20
9. Rear Quarter Trim Panel (Wagon)	21
10. Floor Mat AIRBAG	21

PRECAUTION FOR SUPPLEMENTAL RESTRAINT SYSTEM “AIRBAG”

The Supplemental Restraint System “Airbag” helps to reduce the risk or severity of injury to the driver in a frontal collision.

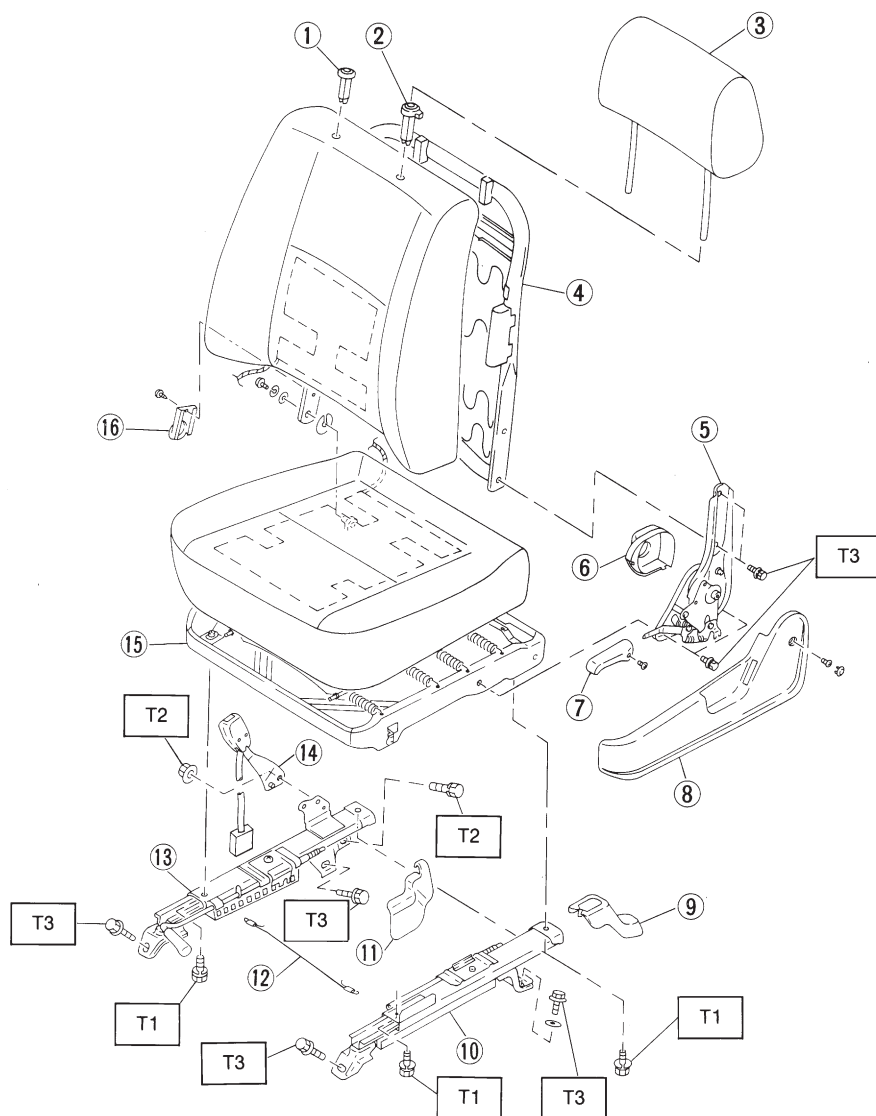
The Supplemental Restraint System consists of an airbag module (located in the center of the steering wheel), sensors, a control module, warning light, wiring harness and roll connector.

Information necessary to service the safety is included in the “5-5. SUPPLEMENTAL RESTRAINT SYSTEM” of this Service Manual.

WARNING:

- To avoid rendering the Airbag system inoperative, which could lead to personal injury or death in the event of a severe frontal collision, all maintenance must be performed by an authorized SUBARU dealer.
- Improper maintenance, including incorrect removal and installation of the Airbag system, can lead to personal injury caused by unintentional activation of the Airbag system.
- All Airbag system electrical wiring harnesses and connectors are covered with yellow outer insulation. Do not use electrical test equipment on any circuit related to the Supplemental Restraint System “Airbag”.

1. Front Seat



G5M0334

- ① Headrest free bushing
- ② Headrest lock bushing
- ③ Pad and cover ASSY
- ④ Front backrest frame ASSY
- ⑤ Reclining hinge ASSY
- ⑥ Hinge spring cover
- ⑦ Reclining lever

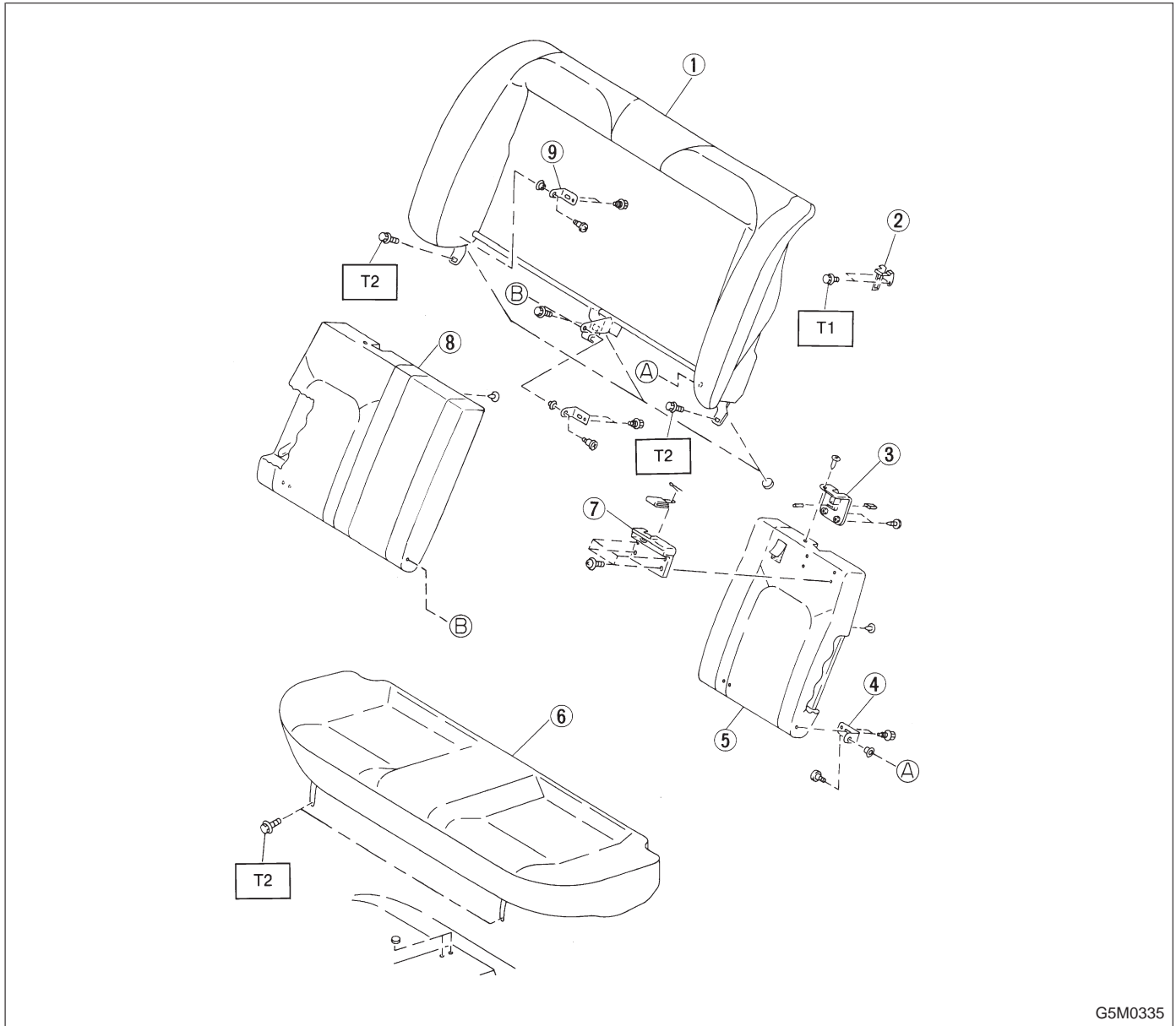
- ⑧ Hinge cover
- ⑨ Cover (Bolt) (outer)
- ⑩ Outer slide rail ASSY
- ⑪ Cover (Bolt) (inner)
- ⑫ Connect wire
- ⑬ Inner slide rail ASSY
- ⑭ Inner belt ASSY

- ⑮ Front cushion frame ASSY
- ⑯ Protector

Tightening torque: N·m (kg·m, ft·lb)
T1: 18 — 27 (1.8 — 2.8, 13 — 20)
T2: 23 — 36 (2.3 — 3.7, 17 — 27)
T3: 42 — 62 (4.3 — 6.3, 31 — 46)

2. Rear Seat (Sedan and Coupe)

1. FOLD-DOWN TYPE

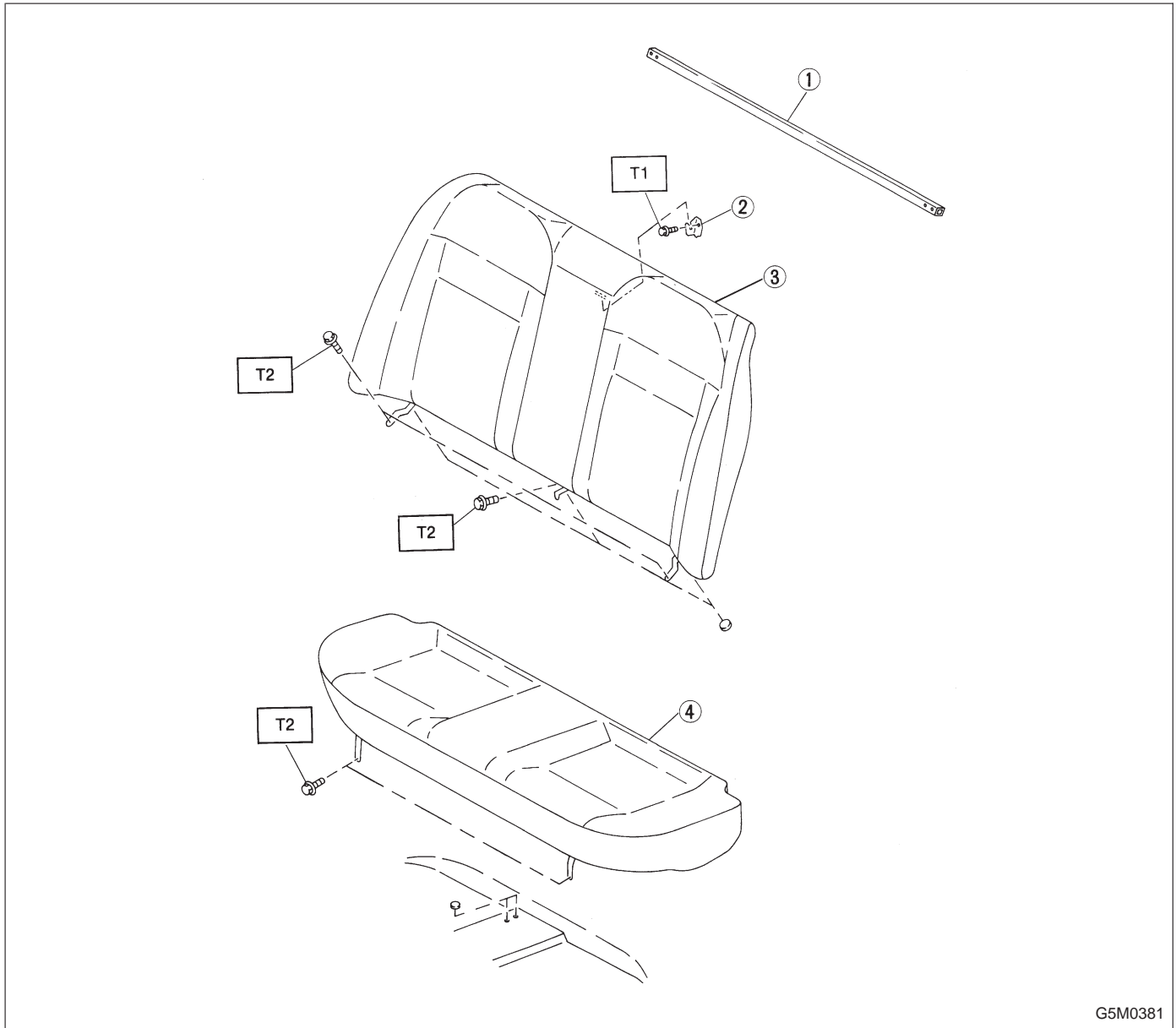


- ① Backrest
- ② Striker
- ③ Lock cover
- ④ Bracket (LH)
- ⑤ Backrest (LH)

- ⑥ Cushion
- ⑦ Lock ASSY
- ⑧ Backrest (RH)
- ⑨ Bracket (RH)

Tightening torque: N·m (kg-m, ft-lb)
T1: 7 — 13 (0.7 — 1.3, 5.1 — 9.4)
T2: 18 — 31 (1.8 — 3.2, 13 — 23)

2. FIXED TYPE



G5M0381

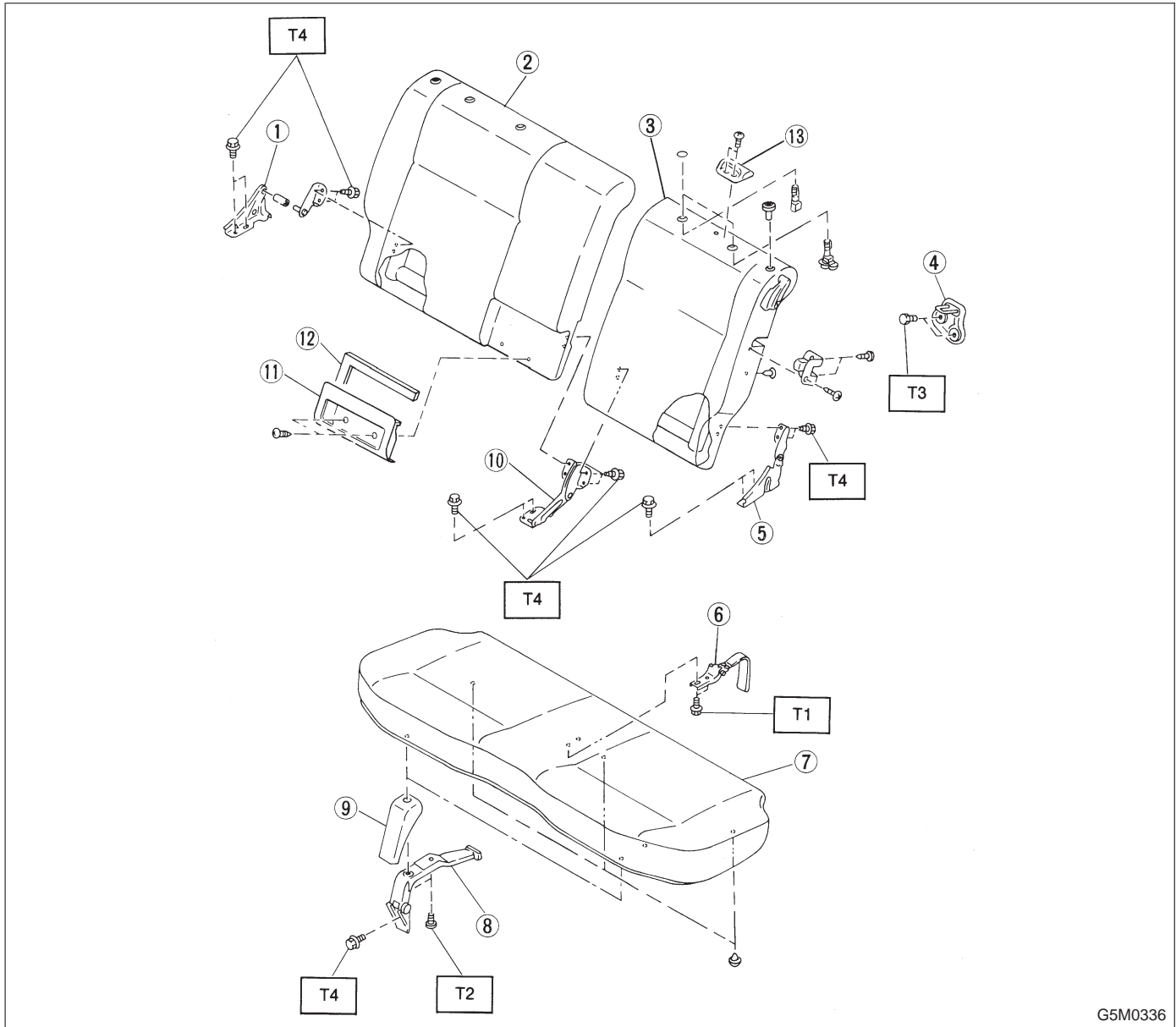
- ① Rear seat reinforcement
- ② Hook
- ③ Backrest
- ④ Rear cushion

Tightening torque: N·m (kg·m, ft·lb)

T1: 7 — 13 (0.7 — 1.3, 5.1 — 9.4)

T2: 18 — 31 (1.8 — 3.2, 13 — 23)

3. Rear Seat (Wagon)

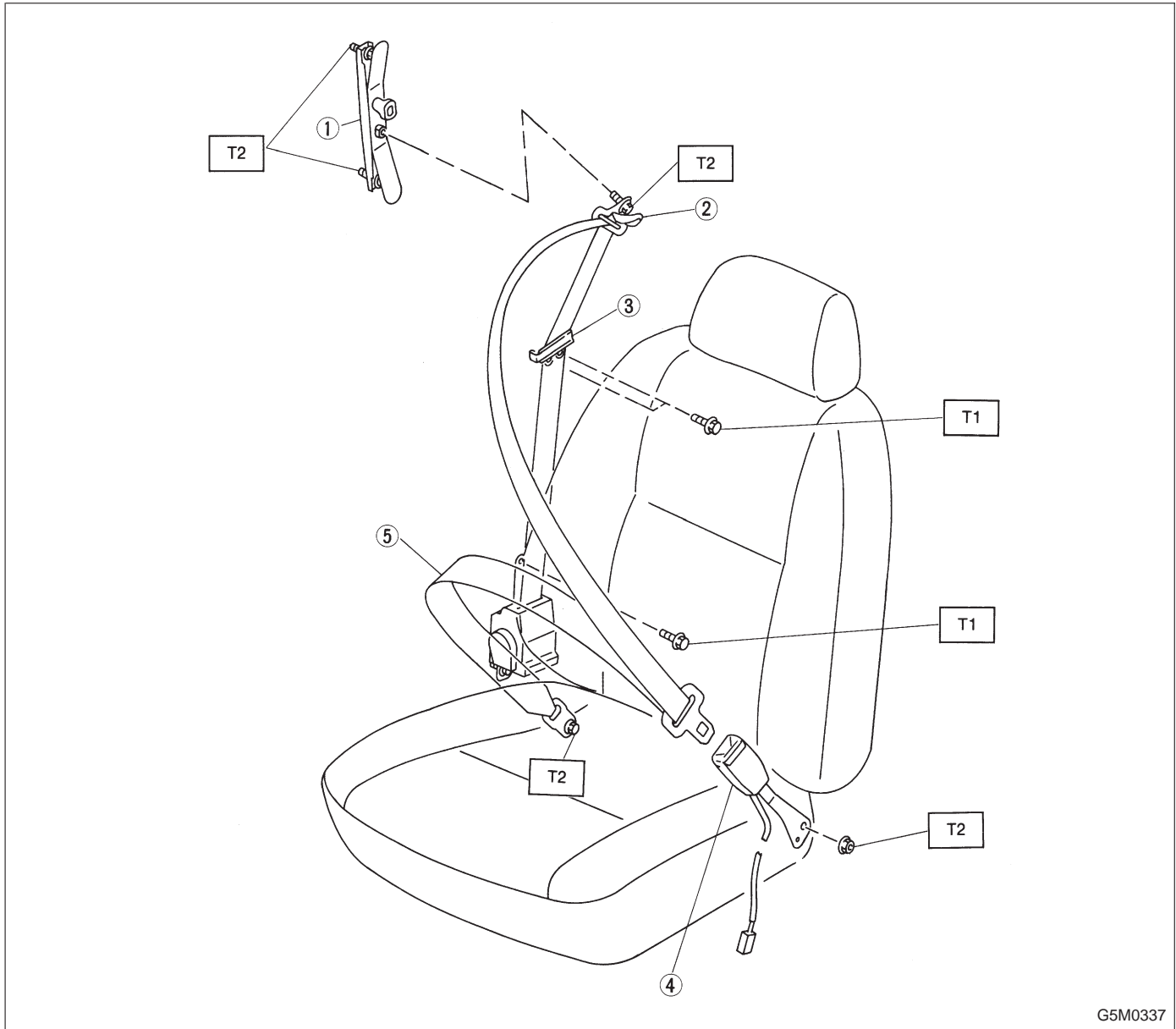


G5M0336

- | | |
|----------------------|-------------------------|
| ① Hinge bracket (RH) | ⑧ Hinge |
| ② Backrest (RH) | ⑨ Hinge cover |
| ③ Backrest (LH) | ⑩ Backrest center hinge |
| ④ Striker | ⑪ Belt pocket |
| ⑤ Hinge bracket (LH) | ⑫ Pad ASSY pocket |
| ⑥ Lock hinge | ⑬ Hook |
| ⑦ Rear cushion | |

Tightening torque: N·m (kg·m, ft·lb)
T1: 1 — 3 (0.1 — 0.3, 0.7 — 2.2)
T2: 4.4 — 7.4
(0.45 — 0.75, 3.3 — 5.4)
T3: 7 — 13 (0.7 — 1.3, 5.1 — 9.4)
T4: 18 — 31 (1.8 — 3.2, 13 — 23)

4. Front Seat Belts

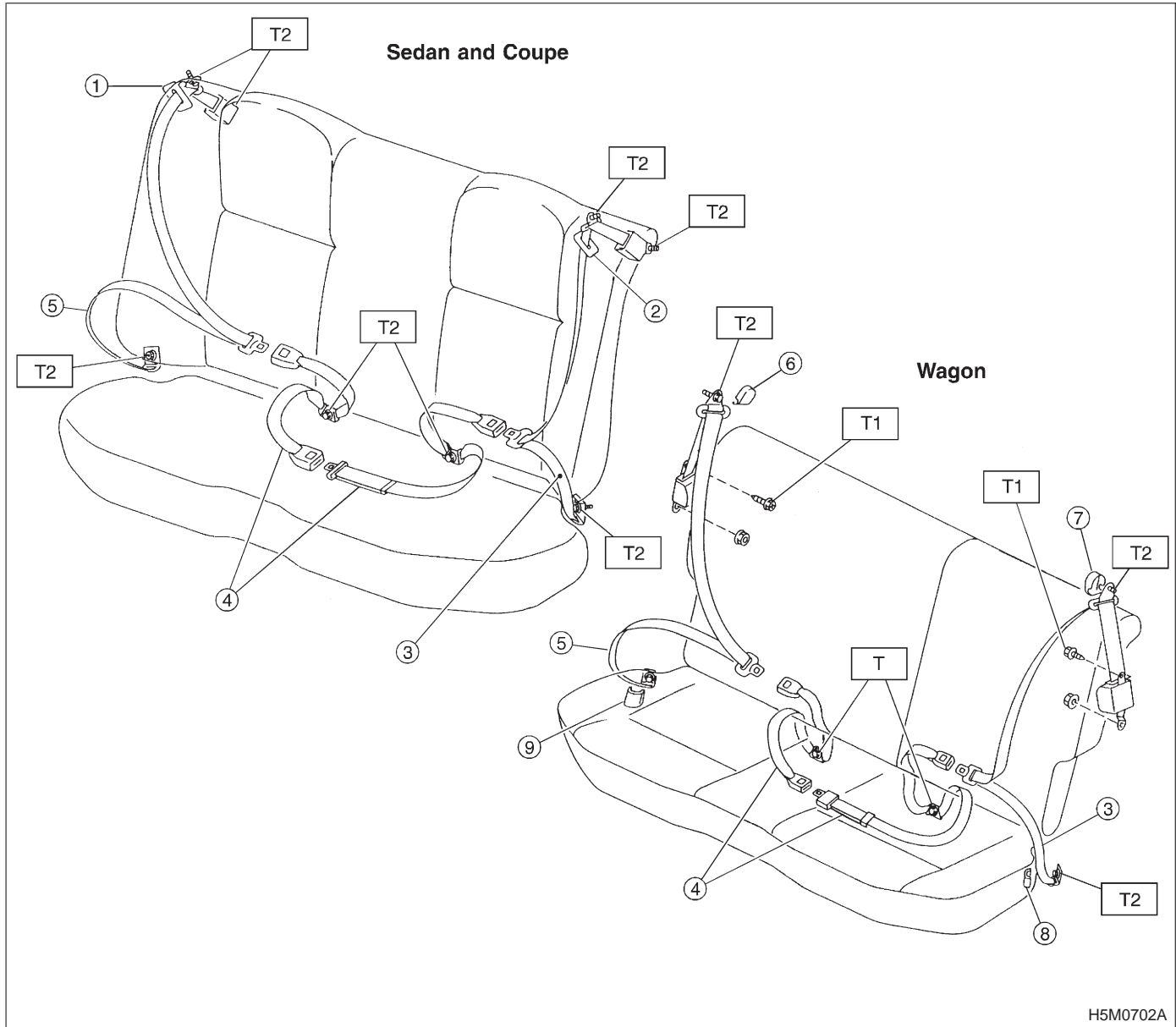


G5M0337

- ① Adjuster anchor ASSY
- ② Through cover
- ③ Webbing guide
- ④ Inner belt ASSY
- ⑤ Outer belt ASSY

Tightening torque: N·m (kg-m, ft-lb)
T1: 10 — 16 (1.0 — 1.6, 7 — 12)
T2: 23 — 49 (2.3 — 5.0, 17 — 36)

5. Rear Seat Belts

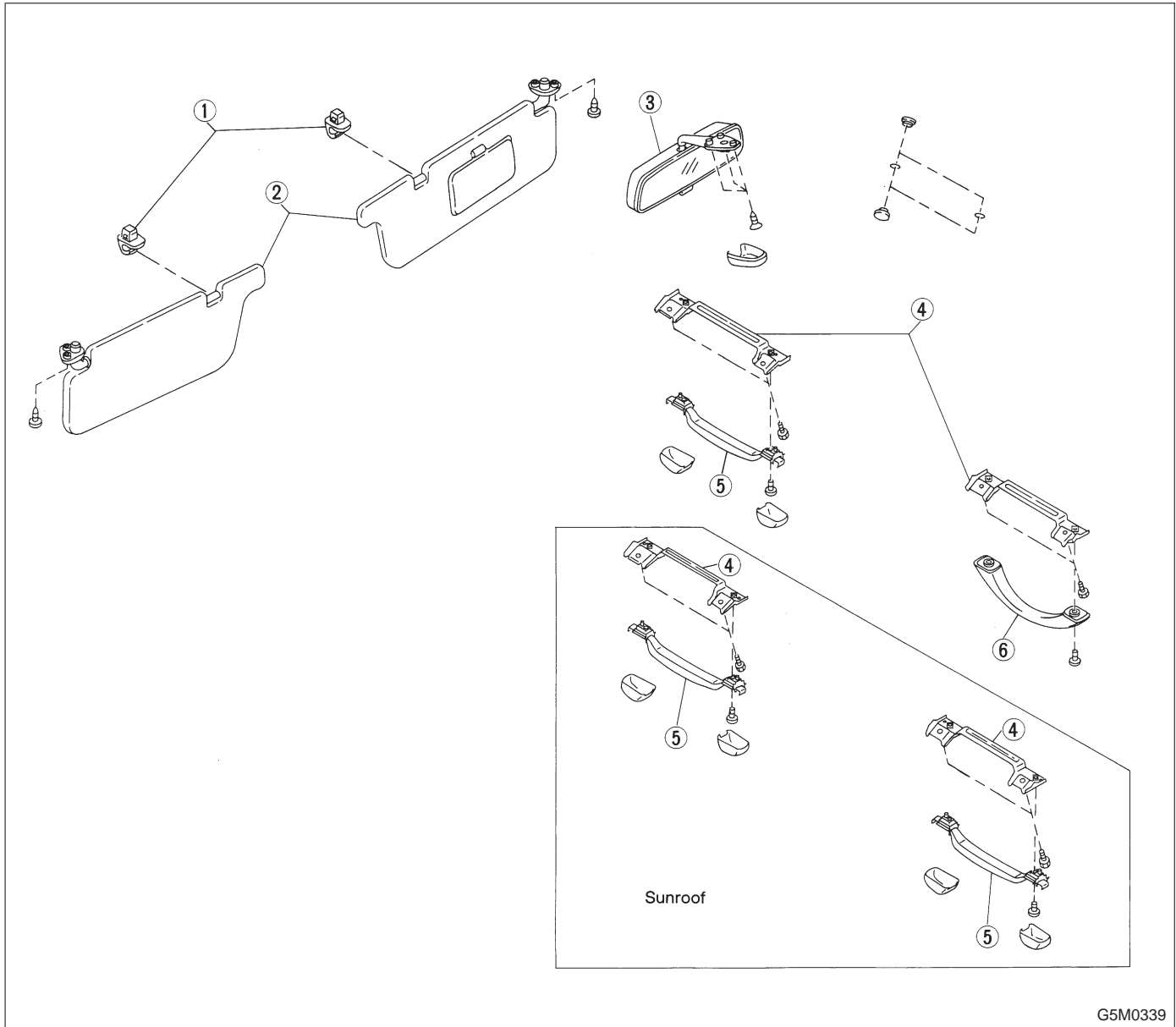


- ① Webbing cover (RH)
- ② Webbing cover (LH)
- ③ Outer seat belt (LH)
- ④ Center seat belt
- ⑤ Outer seat belt (RH)

- ⑥ Through cap (RH)
- ⑦ Through cap (LH)
- ⑧ Lap anchor cover (LH)
- ⑨ Lap anchor cover (RH)

Tightening torque: N·m (kg·m, ft·lb)
T1: 10 — 16 (1.0 — 1.6, 7 — 12)
T2: 23 — 49 (2.3 — 5.0, 17 — 36)

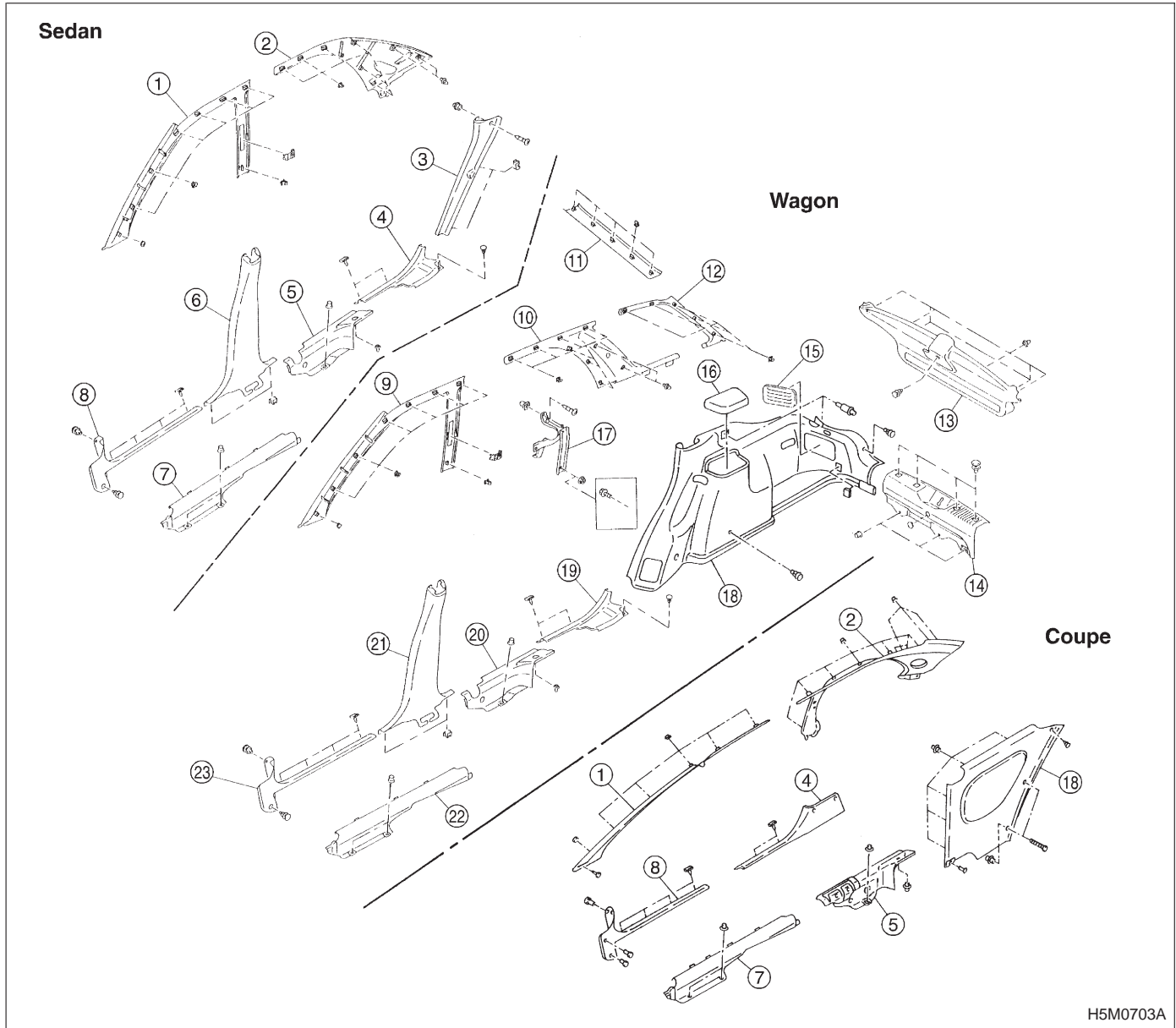
6. Inner Accessories



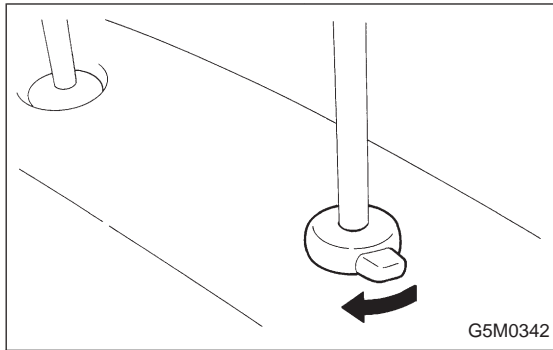
- ① Hook
- ② Sun visor
- ③ Rearview mirror

- ④ Assist rail bracket
- ⑤ Assist grip (retractable)
- ⑥ Assist grip (fixed)

7. Inner Trim



- | | | |
|-------------------------------|---------------------------------|-------------------------------|
| ① Front pillar upper trim | ⑨ Front pillar upper trim | ⑰ Trim bracket |
| ② Rear pillar upper trim | ⑩ Rear quarter upper front trim | ⑱ Rear quarter trim |
| ③ Rear pillar lower trim | ⑪ Rear rail trim | ⑲ Side sill rear upper cover |
| ④ Side sill rear upper cover | ⑫ Rear quarter upper rear trim | ⑳ Side sill rear lower cover |
| ⑤ Side sill rear lower cover | ⑬ Rear gate trim | ㉑ Center pillar lower trim |
| ⑥ Center pillar lower trim | ⑭ Rear skirt trim | ㉒ Side sill front lower cover |
| ⑦ Side sill front lower cover | ⑮ Lamp cover | ㉓ Front pillar lower trim |
| ⑧ Front pillar lower trim | ⑯ Speaker cover | |

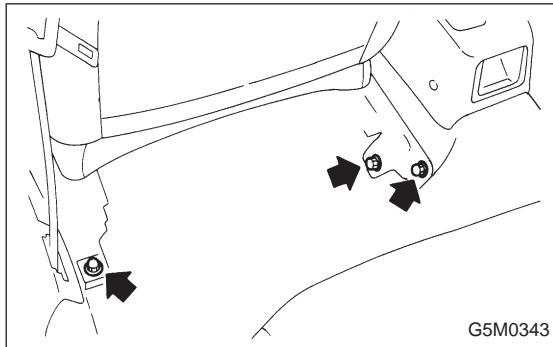


1. Front Seat

A: REMOVAL

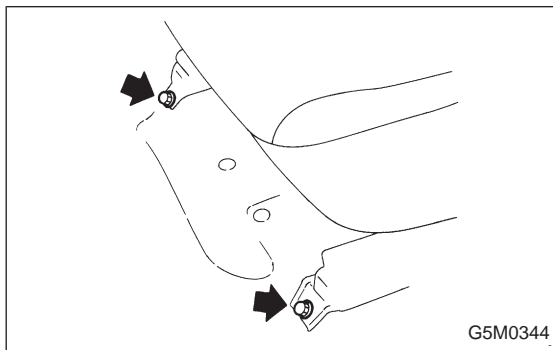
1) While operating knob (located on top of backrest), lift headrest out with hand placed between backrest and headrest.

2) Pull reclining lever back to fold backrest all the way forward. While pulling slide adjuster lever, move seat all the way forward.



3) Remove bolt cover at rear end of slide rail.

4) Remove bolts securing seat rear.



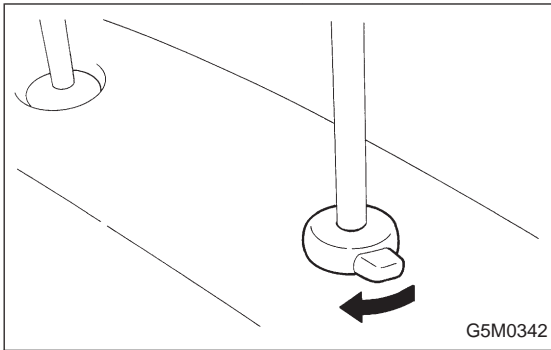
5) While pulling slide adjuster lever, slide seat all the way back.

6) Remove bolts securing front of seat, and remove seat belt from belt guide.

7) Remove front seat from vehicle, then install headrest.

CAUTION:

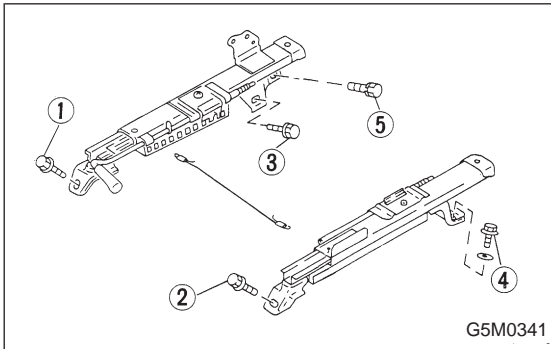
Be careful not to scratch seat when removing it from vehicle.



B: INSTALLATION

1) While operating knob (located on top of backrest), lift headrest out by placing your hand between backrest and headrest.

2) Pull reclining lever back to fold backrest all the way forward. Pull slide adjuster lever and move lower slide rail all the way backward.



3) Position seat in compartment and align the holes on the seat with the holes on the car body side.

4) Secure the front of seat using inward and outward bolts ① and ② in that order.

5) While pulling slide adjuster lever, move seat all the way forward.

6) Secure the rear of seat using inward and outward bolts ③ and ④.

7) Install bolt ⑤.

CAUTION:

Check that all lock plate pawls are completely and equally inserted into the holes in the slide rail brackets.

8) After installation, ensure that all mechanisms operate properly and lock.

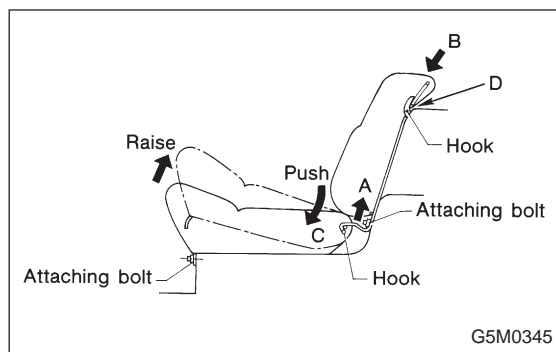
9) If any mechanism does not function properly, loosen bolts ③, ④ and ⑤, slide seat as required, insert all lock plate pawls into holes in slide rail brackets, and tighten bolts ③, ④ and ⑤ in that order.

10) Install bolt cover on rear end of slide rail.

11) Install headrest on backrest.

NOTE:

Tighten bolts in the designated order.

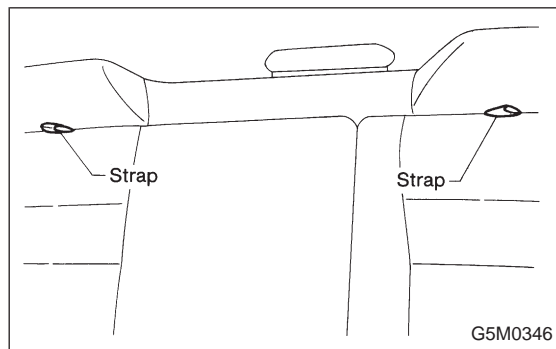


2. Rear Seat (Sedan and Coupe)

A: REMOVAL

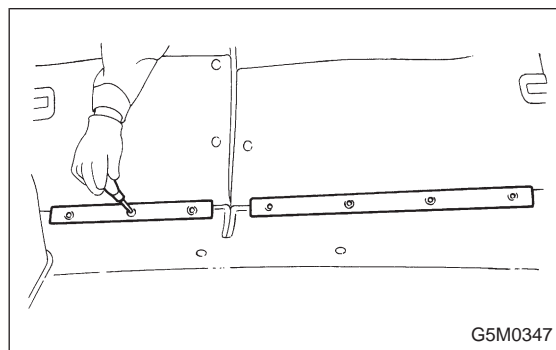
1) Remove bolts securing hinges (located at front of cushion) to body.

2) Slightly raise front of cushion while pushing down on cushion in the direction of "C". With cushion held in that position, move it forward until it is unhooked.



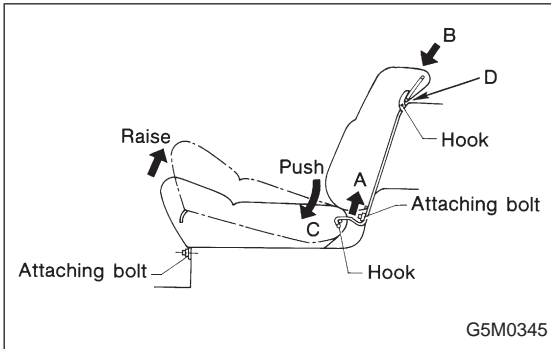
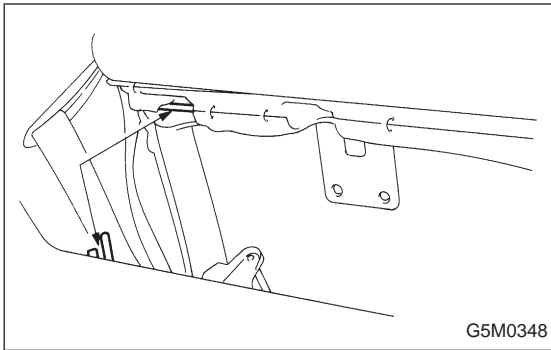
3) Remove bolts securing lower portion of backrest to body.

4) Pull strap (located in center of fold-down backrest) to release lock, and fold backrest onto cushion. (Fold-Down type)



5) Remove screws (located at overlapped portions of trunk compartment mat) and mat (on rear of backrest), and remove edges. (Fold-Down type)

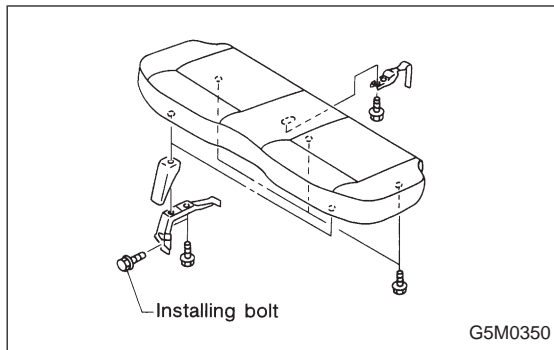
6) Lift rear seat backrest in direction "A" until it is released from upper hooks.

**B: INSTALLATION**

- 1) Before installing backrest, ensure that trim panel, insulator and seat belt are properly installed.
- 2) Transfer outer seat belt webbing to front of backrest and fold backrest forward. Attach seat belt webbing to upper hooks (2 places), and move pillow in the direction of "B" until backrest is aligned with lower mounting holes in body.
- 3) Engage backrest's folding mechanism with striker.
- 4) Secure lower center and both sides of backrest to body with bolts.
- 5) Slightly raise front section of cushion while pushing down on cushion in the direction of "C". With cushion held in that position, attach rear section of cushion to hooks at lower frame location.
- 6) Secure front of cushion to body with bolts.
- 7) Fold backrest onto cushion and overlap trunk mat and mat (on backrest). While pushing down on edges of the mats, tighten with screws.

CAUTION:

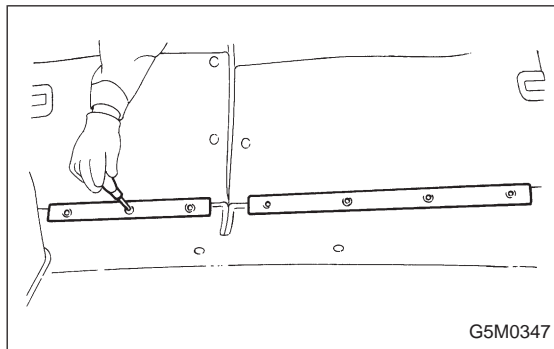
- Before installing seat, ensure that seat belt is placed on cushion.
- Observe instructions when storing seat belt in belt pocket in backrest.
- Before removing or installing backrest, remove seat belt from belt pocket.
- Confirm that winding of three-point type seat belt can operate regularly.



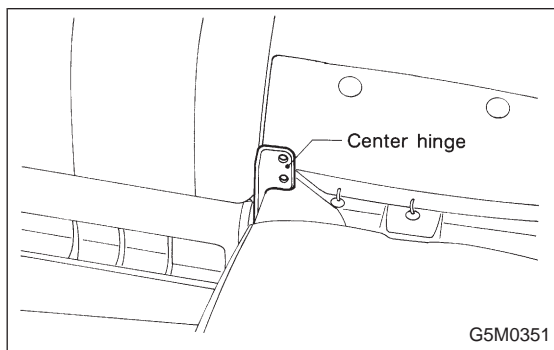
3. Rear Seat (Wagon)

A: REMOVAL

- 1) Remove bolts securing hinges (located at front of seat) to body.
- 2) Pull strap (located in middle rear portion of cushion) to release lock. Lift cushion out and away from body.
- 3) Pull knobs (located at each side of backrest's upper portion) up to release lock, and fold backrest all the way forward.

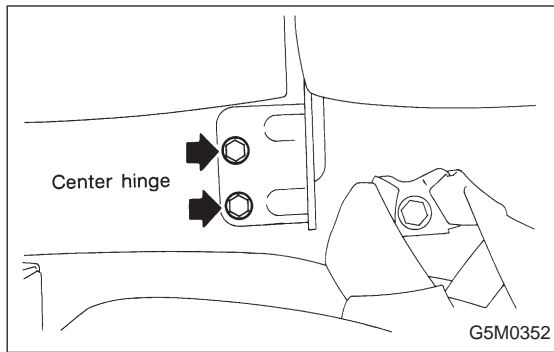


- 4) Remove screws which secure overlapped portions of luggage compartment mat and mat directly behind backrest.
- 5) Roll up mat (located at rear of left backrest) and remove the bolt which secures center hinge to backrest.

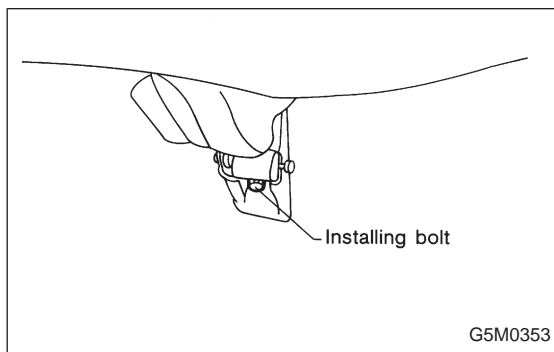


- 6) Tilt left backrest forward until striker engages with lock, and remove the bolt which secures side hinge to body.
- 7) Pull knob up until left backrest lock is released. Slide backrest forward and away from body.
- 8) Remove the bolt which secures center hinge of right backrest to body.

- 9) Pull knob up until right backrest lock is released. While tilting backrest forward, remove hinge pin from hole in bracket, and remove backrest and away from body.

**B: INSTALLATION**

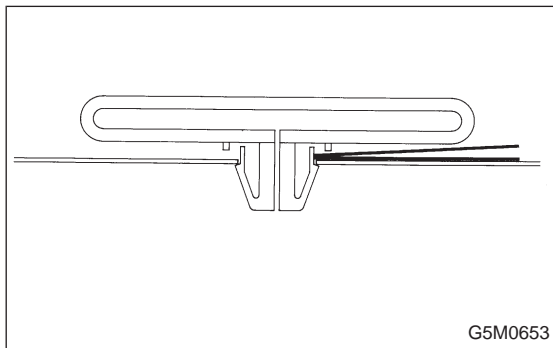
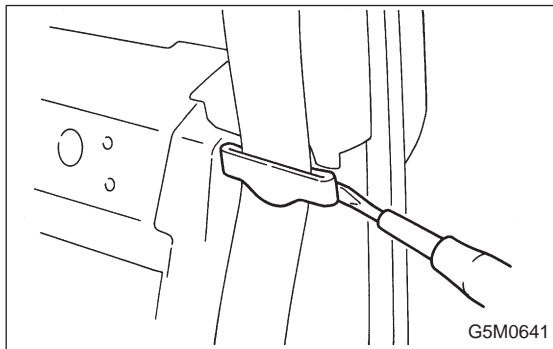
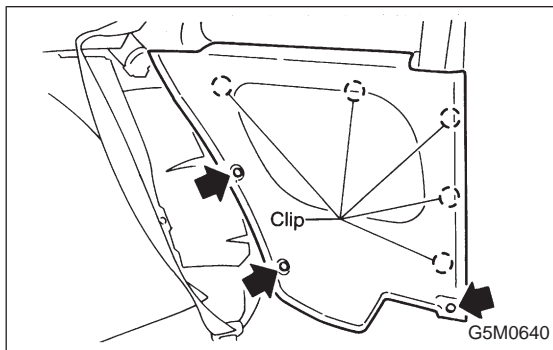
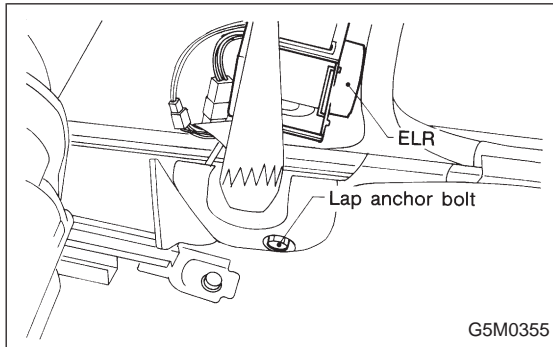
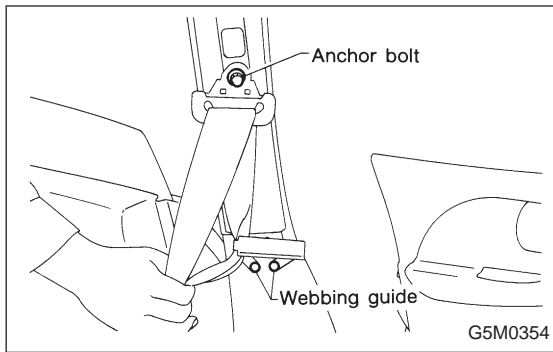
- 1) Install hinge bracket to body.
- 2) Insert right backrest hinge pin into hole in bracket. Tilt backrest backward until striker engages with lock.
- 3) Secure right backrest center hinge to body using a bolt.
- 4) Temporarily install left backrest side hinge to body using a bolt, and fold backrest forward to the floor.
- 5) Roll up mat (located at rear of left backrest), and install center hinge using a bolt.
- 6) Tilt left backrest until striker engages with lock, and tighten bolt [refer to step 4)].



- 7) Install hinges to front of cushion and tighten with bolts. Check that lock properly engages.
- 8) Fold backrest onto cushion and overlap trunk mat and mat at rear of backrest. While pushing down on edges of these mats, tighten screws.

CAUTION:

- Do not allow center seat belt to get under cushion when folding cushion.
- Ensure that side seat belt tongue is free from cushion and trim panel.
- Before folding cushion, store seat belt in belt pocket located in backrest.
- Lift front of cushion to ensure that cushion is properly locked.
- Before removing or installing backrest, pull seat belt out of backrest belt pocket.



4. Front Seat Belt

A: REMOVAL

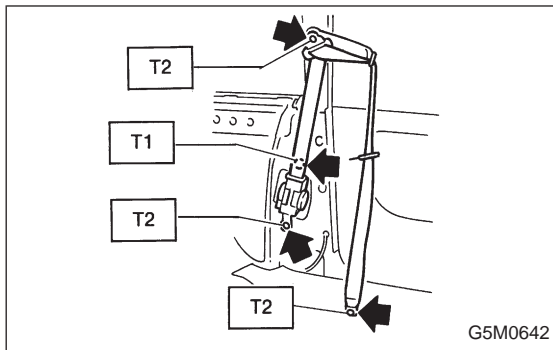
1. OUTER BELT (SEDAN AND WAGON MODEL)

- 1) Remove through-anchor cover cap.
- 2) Remove shoulder anchor bolt.
- 3) Remove webbing guide.
- 4) Remove center lower pillar trim panel.
- 5) Remove front cover side plate.
- 6) Roll up floor mat at the bottom of center pillar.
- 7) Remove lap anchor bolt.
- 8) Remove belt retractor and outer belt.

2. OUTER BELT (COUPE MODEL)

- 1) Remove rear seat cushion and back rest.
<Ref. to 5-3 [W2A0].>
- 2) Remove rear quarter trim.

- 3) Remove webbing guide.

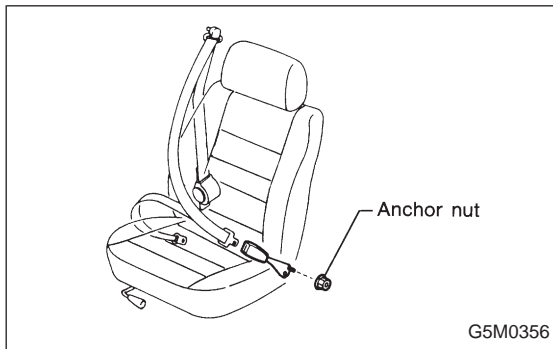


- 4) Remove anchor cover cap.
- 5) Remove four bolts and then belt retractor and outer belt.

Tightening torque:

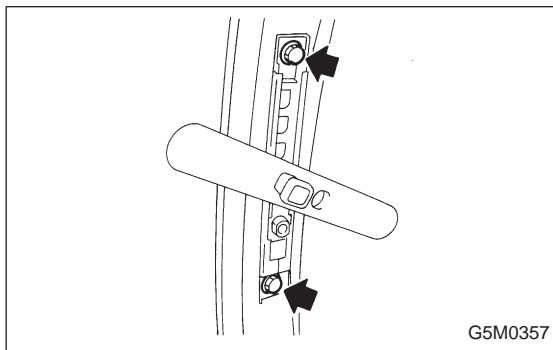
T1: 13 ± 3 N·m (1.3 ± 0.3 kg-m, 9.4 ± 2.2 ft-lb)

T2: 35 ± 13 N·m (3.6 ± 1.3 kg-m, 26 ± 9 ft-lb)



3. INNER BELT

- 1) Remove anchor nut.



4. ADJUSTABLE SHOULDER ANCHOR

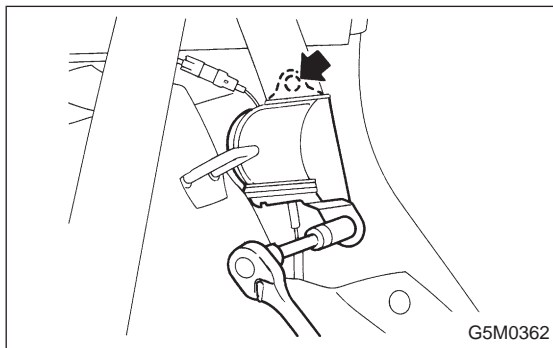
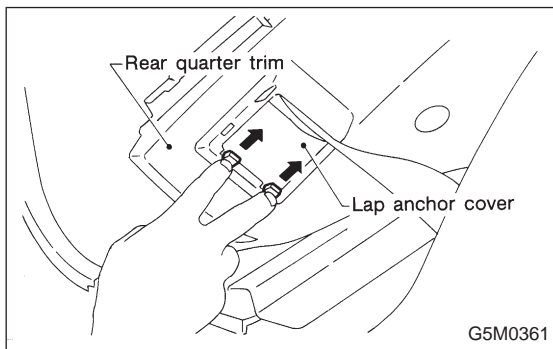
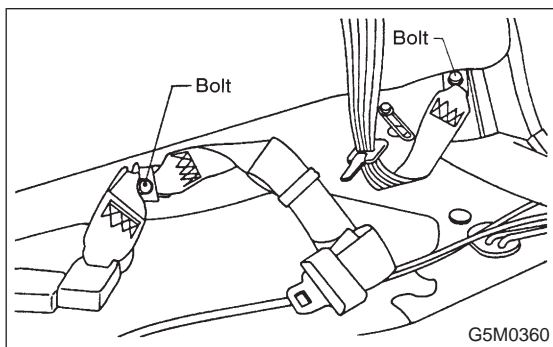
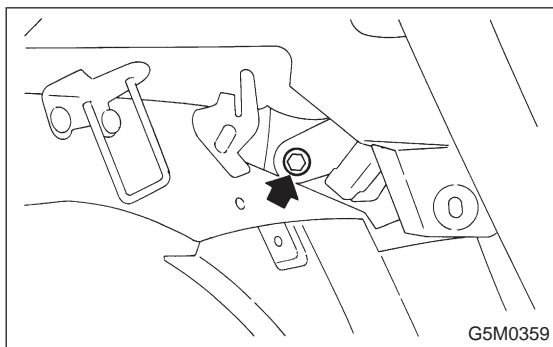
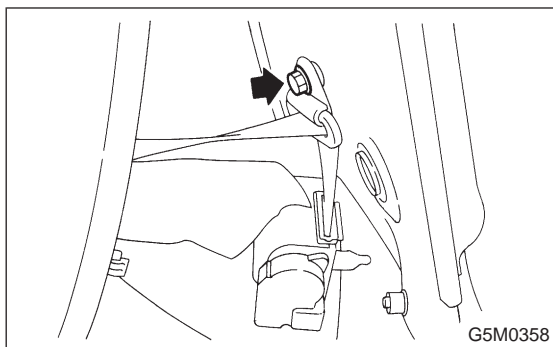
- 1) Remove shoulder anchor bolt.
- 2) Remove lower center pillar trim.
- 3) Remove front and front pillar trim panel.
- 4) Remove adjustable shoulder anchor assembly.

B: INSTALLATION

Installation is in the reverse order of removal.

CAUTION:

- The left and right ELR's are not mutually interchangeable because different sensors are used.
- Be careful not to twist belts during installation.



5. Rear Seat Belt

A: REMOVAL

1. SEDAN MODEL

- 1) Remove rear cushion from body.
- 2) Remove rear backrest from body.
- 3) Remove screw from lower side of rear quarter trim, and lift up lower side of rear quarter trim.
- 4) Remove trim panel rear bracket upper.
- 5) Remove rear quarter trim.
- 6) Remove outer anchor bolts.
- 7) Remove rear bolt from ELR.
- 8) Remove belt from outlet in rear quarter along slit.

- 9) Remove inner bolts which secure outer seat.
- 10) Remove washer from bolt, then remove bolt, belt assembly, and anchor plate bracket.
- 11) Remove inner bolts (2 places) from center seat.
- 12) Remove washer from bolt, and remove bolt, belt assembly and anchor plate bracket.

2. WAGON MODEL

- 1) Raise rear cushion.
- 2) Remove rear backrest from body.
- Remove shoulder anchor cover and anchor bolt.
- 3) Remove lower portion of rear quarter trim.
- 4) Remove lap anchor cover and bolt.

- 5) Remove 7/16-20 UNF nuts which secure ELR and remove ELR.

CAUTION:

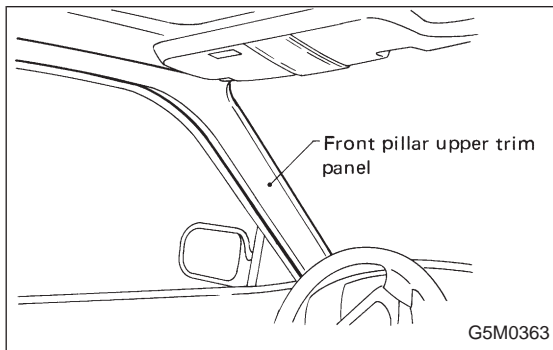
Remove outer seat belt and center seat belt in similar manner used to remove those from Sedan.

B: INSTALLATION

Installation is in the reverse order of removal. Ensure that seat belt is properly reeled on and off after installation of ELR.

CAUTION:

- Be extremely careful not to confuse center seat anchor plate with outer seat anchor plate during installation.
- Ensure that seat belts are free from twisting after installation.
- Ensure that tongues, buckles and belts are properly placed on seat.

**6. Front Pillar Upper Trim Panel****A: REMOVAL**

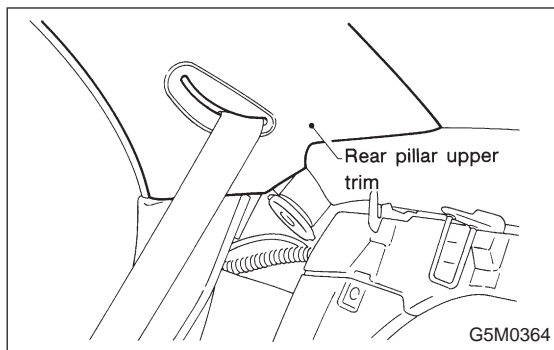
- 1) Remove center pillar lower trim panel.
- 2) Remove seat belt anchor bolts.
- 3) Pry pawls off body flange of front pillar upper trim panel using screwdriver.
- 4) Remove clips which hold front pillar upper trim panel, and lift trim panel out by moving it toward the compartment.

B: INSTALLATION

Installation is in the reverse order of removal.

CAUTION:

Be sure to securely hook pawls of front pillar upper trim panel on body flange.



7. Rear Pillar Upper Trim Panel (Sedan and Coupe)

A: REMOVAL

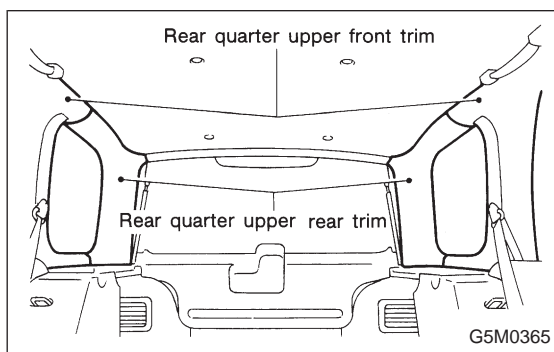
- 1) Remove rear seat cushion and backrest.
- 2) Remove tapping screw from rear pillar lower trim panel, and remove trim panel by sliding it forward.
- 3) Remove front pillar upper trim end.
- 4) Pry the pawl off front end using screwdriver.
- 5) Remove clips which hold rear pillar upper trim, and remove trim panel by sliding it forward.

B: INSTALLATION

Installation is in the reverse order of removal.

CAUTION:

Be sure to securely hook pawls of rear pillar upper trim panel on body flange.



8. Rear Quarter Pillar Upper Trim Panel (Wagon)

A: REMOVAL

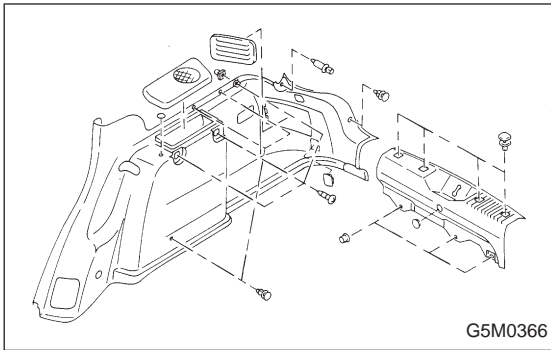
- 1) Set rear seat cushion up.
- 2) Remove rear seat backrest.
- 3) Remove rear quarter lower trim.
- 4) Remove rear rail trim.
- 5) Remove rear quarter upper front trim.
- 6) Remove rear quarter upper rear trim.

B: INSTALLATION

Installation is in the reverse order of removal.

CAUTION:

Be sure to securely hook pawls of rear quarter pillar trim panel on body flange.



9. Rear Quarter Trim Panel (Wagon)

A: REMOVAL

- 1) Set rear seat cushion up.
- 2) Remove rear seat backrest.
- 3) Remove sideshelf and rear skirt trim.
- 4) Remove clip and screw of rear quarter lower trim.
- 5) Remove rear quarter lower trim.

B: INSTALLATION

Installation is in the reverse order of removal.

CAUTION:

Be careful not to ride trim panel over harness, insulators, etc.

10. Floor Mat **AIRBAG**

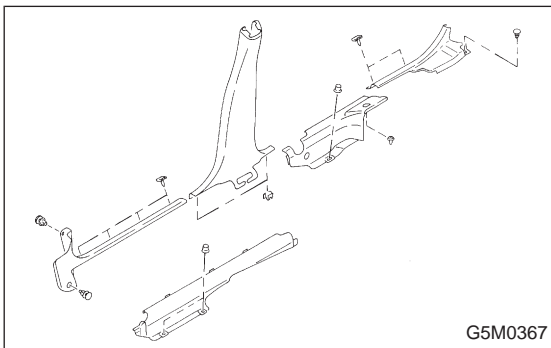
Supplemental Restraint System "Airbag"

Airbag system wiring harness is routed near floor mat.

CAUTION:

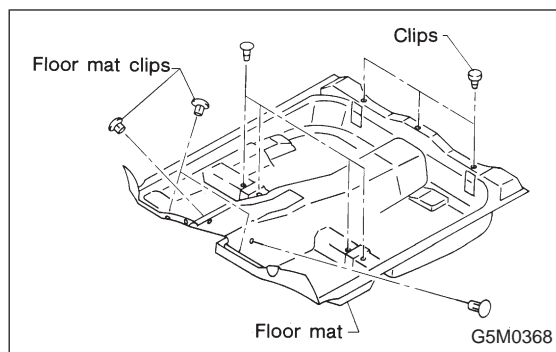
- All Airbag system wiring harness and connectors are colored yellow. Do not use electrical test equipment on these circuit.
- Be careful not to damage Airbag system wiring harness when servicing floor mat.

The following procedure is applicable to all models.



A: REMOVAL

- 1) Remove front seats.
- 2) Remove rear seat cushion.
- 3) Remove center tray, indicator cover, cover assembly, and console box, depending on the specifications.
- 4) Remove front pillar lower trim panel.
- 5) Remove center pillar lower trim panel.
- 6) Remove three clips under rear seat cushion.
- 7) Remove rear cover side plate and rear pillar lower trim.
- 8) Pull out edge in the groove of side sill cover.



9) Remove four clips under front seat.

10) Remove four clips in toe board area.

NOTE:

When pulling out edge, do not pull mat alone; pull mat together with edge.

Pry off two steel clips on side sill front cover and one on side sill rear cover using screwdriver.

11) Remove mat hook.

12) Remove mat from toe board area.

13) Remove mat from heater unit.

14) Roll mat, and take it out of opened rear door.

B: INSTALLATION

Installation is in the reverse order of removal.

1) Secure mat firmly with hook and velcro tape.

2) Insert mat edge firmly into the groove of side sill cover.