

# FORESTER

2015 Quick Reference Guide

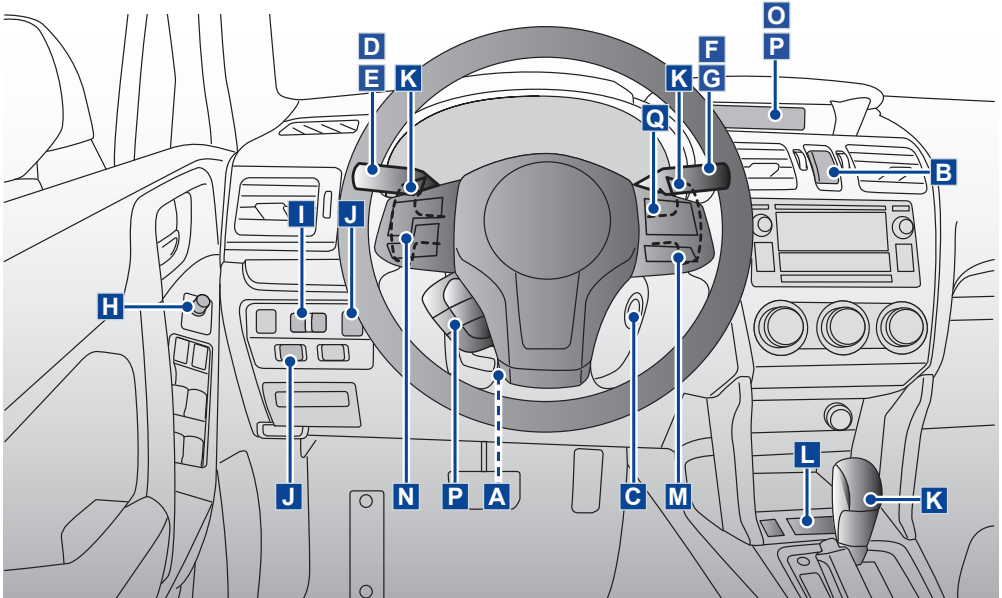


**SUBARU**

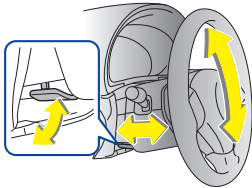
*Confidence in Motion*



# DRIVER'S AREA

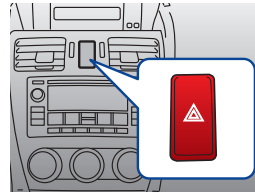


## A Tilt / telescopic steering wheel



Adjust the seat position and pull the tilt/telescopic lock lever down. Move the steering wheel to the desired level. Pull the lever up to lock the steering wheel in place. Make sure that the steering wheel is securely locked by trying to move it up and down, and forward and backward.

## B Hazard warning flasher



To turn on, press the button.  
Use in emergency conditions.

## C Ignition switch



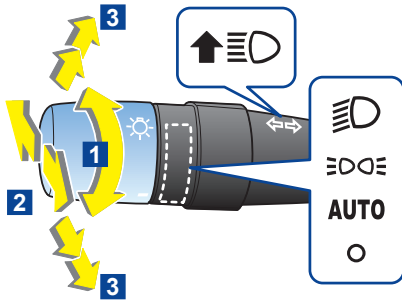
**LOCK:** Insertion and removal of key, steering lock.

**ACC:** Electrical accessories usage

**ON:** Normal operating position after engine is started

**START:** Engine is started

The key can be turned from **ACC** to **LOCK** position only when the select lever is in the **P** position (CVT models) and the key is pushed in while turning it (all models).

**D** Headlights / Turn signal**1** Headlights

To turn on, rotate knob to;

- : Instrument panel illumination, headlights, parking lights, front side marker lights, rear side marker lights, tail lights and license plate lights are on.
- : Instrument panel illumination, parking lights, front side marker lights, rear side marker lights, tail lights and license plate lights are on.
- AUTO** (if equipped) : Headlights and the lights mentioned above are automatically ON / OFF.
- : The headlights are all off.

**2** High/low beam change

To change to high beam, push lever forward. To return, pull back to original position.

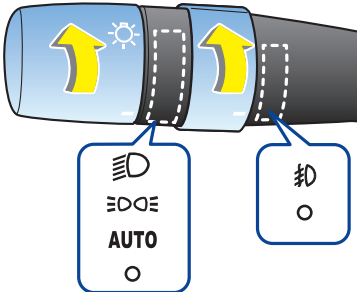
To flash high beams, pull lever back and release.

**3** Turn signal

Move lever up or down.

Even if the key is removed from the ignition switch and the lights turn off, the lights can be illuminated again by turning the light control switch from (off) to or .

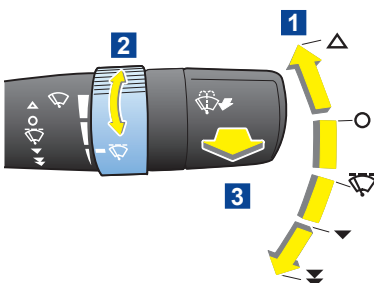
To prevent the battery from being discharged, before leaving the vehicle, make sure that the light control switch is turned to (off).

**E** Fog lights (if equipped)

To turn on, rotate dial to .

Fog lights operate only when headlight switch is in:

- position.
- **AUTO** position and the headlights are on.

**F** Windshield wiper and washer**1** Wiper

To operate, push lever down/up to the following positions:

- : Mist (for a single wipe)
- : Off
- : Intermittent
- : Low speed
- : High speed

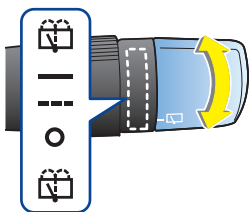
**2** Intermittent time control

To change interval speed, turn dial.

**3** Washer

To wash the windshield, pull the wiper control lever toward you.

## G Rear window wiper and washer



### Wiper


To operate, rotate knob to;

— : Continuous

- - - : Intermittent

O : Off

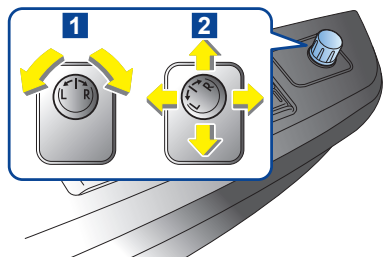
### Washer

Rotate knob to . The washer and wiper operate until you release the knob.

-In the intermittent position, when you move the select lever to the **R** position (CVT) or the shift lever to the reverse position (MT), the rear wiper will switch to continuous operation.

-Even if the rear wiper switch is in the off position, while the shift lever/select lever is in the **R** position with the windshield wiper operating continuously, the rear wiper will operate intermittently.

## H Remote control mirror switch

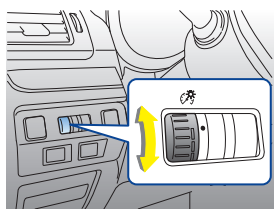


Ignition switch must be in **ACC** or **ON**.

To select mirror, turn the knob **1** to **L** for the left, **R** for the right.

To adjust the mirror, move the knob **2** in the direction you want to move the mirror.

## I Illumination brightness control



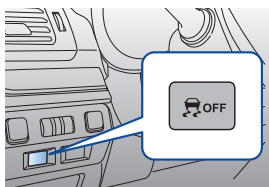
To adjust brightness of the instrument panel illumination, turn dial. When the control dial is turned fully upward to ● position, the illumination brightness becomes the maximum and the automatic dimming function does not work at all.

## J Vehicle Dynamics Control OFF switch

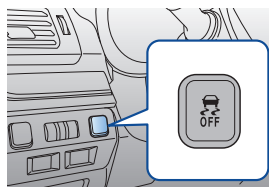
To deactivate Vehicle Dynamics Control, push switch. The Vehicle Dynamics Control OFF indicator lights illuminates.

Deactivation should not be used except when absolutely necessary.

Please refer to Owner's Manual as to when Vehicle Dynamics Control should be deactivated.



models with power rear gate

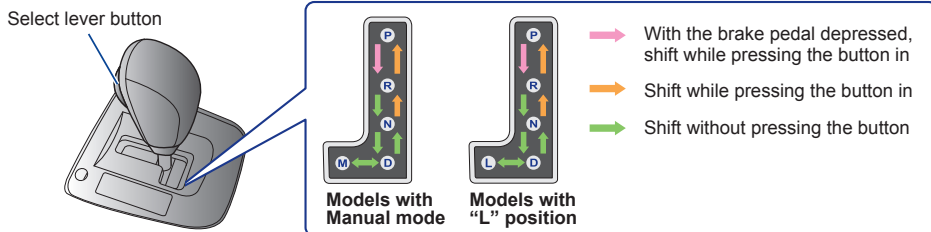


models without power rear gate



VDC OFF indicator

**K Continuously variable transmission (if equipped)**



**L position:** L is for using engine braking when going down a hill, etc. To select this mode, move the select lever from the **D** position to the **L** position.

**Manual mode:** With the vehicle either moving or stationary, move the select lever from the **D** position to the **M** position to select the manual mode.

**P = Park** To move select lever from Park: Firmly depress brake pedal.

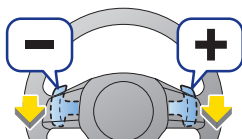
**R = Reverse**

**N = Neutral** No gear engaged.

**D = Drive** For normal driving.

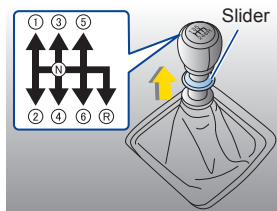
**M = Manual mode**

**L = L position**



Gearshifts can be performed using the shift paddle behind the steering wheel. To upshift to the next higher gear position, pull the shift paddle that has “+” indicated on it. To downshift to the next lower gear position, pull the shift paddle that has “-” indicated on it.

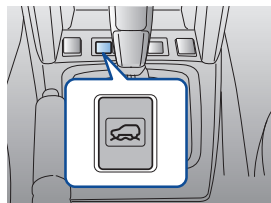
**K Manual transmission (if equipped)**



You must raise the slider and hold it in that position before you can move the shift lever to the **R** position. To change gears, fully depress the clutch pedal, move the shift lever, and gradually let up on the clutch pedal.

**L X-mode (if equipped)**

X-mode is the integrated control system of the engine, AWD and Vehicle Dynamics Control system for driving with bad road conditions.



**To activate:**

Press the X-mode switch. While the X-mode is activated, the X-mode indicator light illuminates.

**To deactivate:**

Press the X-mode switch again. The X-mode indicator light will turn off.

**Hill descent control function:**

Using the hill descent control function, you can operate the vehicle keeping to a consistent speed downhill.

If the vehicle speed is likely to increase, the brake control system will be activated to adjust the vehicle speed.



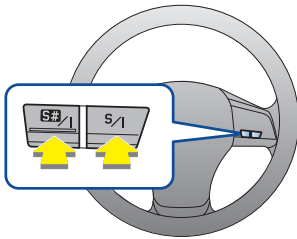
**X-mode indicator**



**Hill descent control indicator**

## M SI-DRIVE switches (if equipped)

This system consists of three modes: Intelligent (I), Sport (S), and Sport Sharp (S#). By operating the SI-DRIVE switches, the character of the power unit changes.



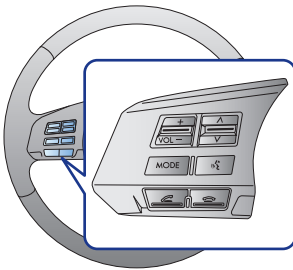
**Intelligent (I) mode:** Perform either of the following procedures.

- Press the **S/I** switch when the Sport (S) mode is selected.
- Press the **S#/I** switch when the Sport Sharp (S#) mode is selected.

**Sport (S) mode:** Press the **S/I** switch when any mode other than Sport (S) mode is selected.

**Sport Sharp (S#) mode:** Press the **S#/I** switch when any mode other than Sport Sharp (S#) mode is selected.

## N Audio control buttons

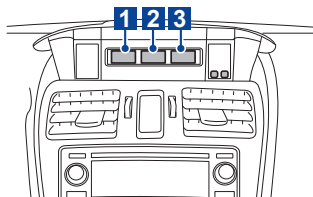


These buttons allow the driver to control audio functions without taking his/her hands off the steering wheel. For the detail and the preparation, please refer to your Owner's Manual.

Please refer to the Owner's Manual for the models without Hands-free systems.

Models with Hands-free system

## O Information display (if equipped)



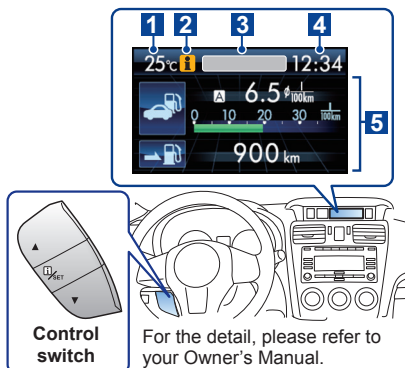
**1** Outside temperature indicator

**2** Driving information display:

With the ignition switch in the ON position, each successive press of the information display selection knob switches the display.

**3** Clock

## P Multi function display (if equipped)



**1** Outside temperature indicator

**2** Information reminder:

If the information reminder appears, pull **i**/SET switch on the steering wheel toward you to recall the message.

**3** Top display:

Displays the driving range on remaining fuel, average fuel consumption or current fuel consumption.

**4** Clock

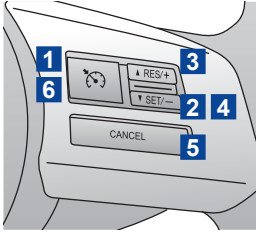
**5** Driving information display/Control switch:

By operating **▲** or **▼** of the control switch, the screens and selection items can be switched.

**Control switch:** By operating **▲** or **▼** of the control switch, the screens and selection items can be switched.

**Q Cruise control (if equipped)**

For models with the EyeSight™ system: Refer to the Owner's Manual supplement for the EyeSight system.



Cruise control enables you to maintain a constant vehicle speed without holding your foot on the accelerator pedal and it is operative when the vehicle speed is 40 km/h (25 mph) or more.

**1 To activate:** Press the cruise control main button.

**2 To set speed:** Press the **RES/SET** switch to the **SET** side at desired speed and release it.

**3 To increase the speed:**

- Press the **RES/SET** switch to the **RES** side and hold it, and then release at desired speed.
- Depress accelerator pedal, and press the **RES/SET** switch to the **SET** side at desired speed.
- For incremental acceleration, press the **RES/SET** switch to the **RES** side quickly. \*Each tap = plus 1 km/h (0.6 mph)

**4 To decrease the speed:**

- Press the **RES/SET** switch to the **SET** side and hold it, and then release at desired speed.
- Depress brake pedal, and press the **RES/SET** switch to the **SET** side at desired speed.
- For incremental deceleration, press the **RES/SET** switch to the **SET** side quickly. \*Each tap = minus 1 km/h (0.6 mph)

**5 To temporarily cancel:**

- Press the **CANCEL** button.
- Depress brake pedal or the clutch pedal (MT).
- Press the X-mode switch to activate the X-mode (models with X-mode).

To return to preset speed after it has been canceled, press the **RES/SET** switch to the **RES** side.

**6 To deactivate:** Push the cruise control main button. Cruise control is always deactivated when ignition switch is turned to **ACC** or **LOCK/OFF**.

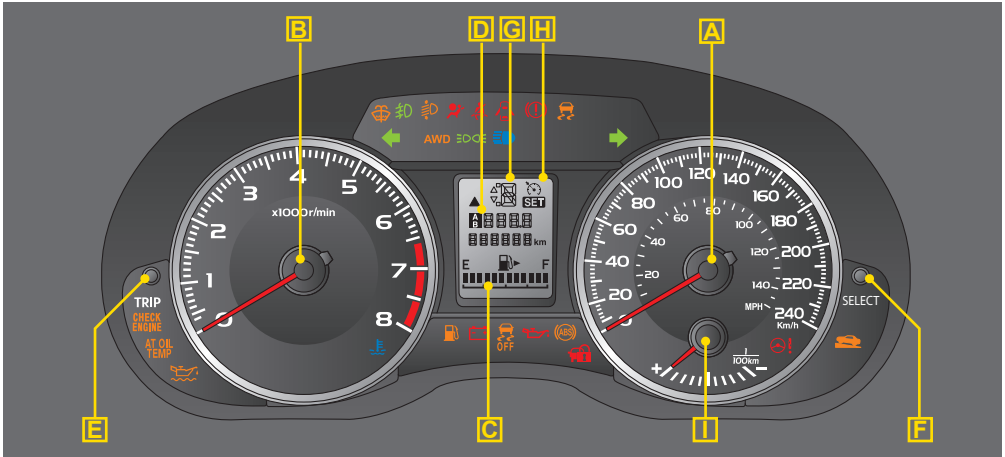
**Cruise control indicator**

The cruise control main button is pressed to activate the cruise control function.

**Cruise control set indicator**

The vehicle speed has been set to use the cruise control function.

# METERS / INDICATORS



The design may be slightly different from the illustrations depending on the models and destinations.  
For models with the EyeSight system: Refer to the Owner's Manual supplement for the EyeSight system.

## **A** Speedometer

## **B** Tachometer

## **C** Fuel gauge

## **D** Odometer / Trip meter

## **E** Trip meter A/B selection and reset knob

Press to select between trip A and trip B.  
Press and hold to reset selected trip meter.  
For other functions, please refer to Owner's Manual.

## **F** Information display selection knob

Press this knob to switch the display.  
For the details, please refer to Owner's Manual.

## **G** Select lever / gear position indicator

This indicator shows the position of the select lever.  
For models with manual mode, when the manual mode is selected, the gear position indicator (which shows the current gear selection) and the upshift/downshift indicator light up.

## **H** Cruise control indicator / Cruise control set indicator

See page 7.

## **I** Eco gauge



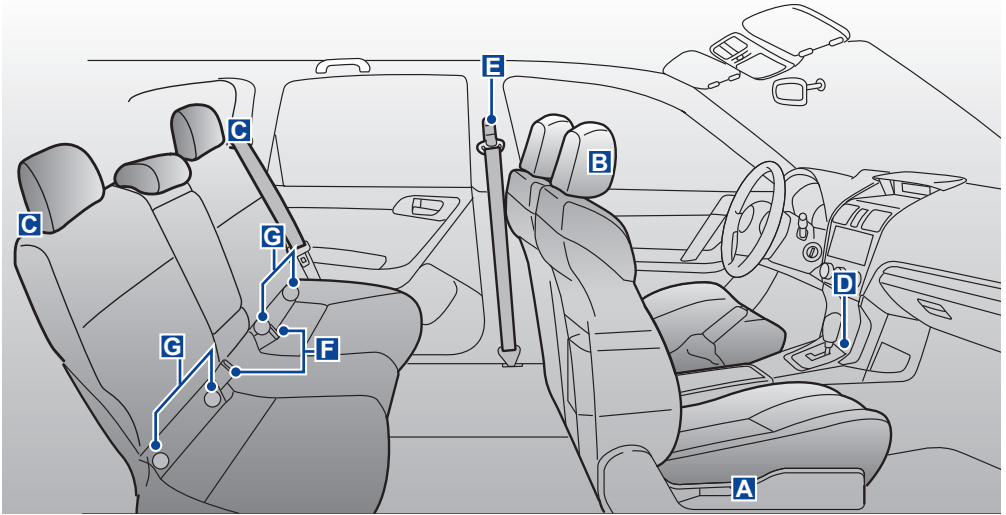
# MAIN WARNING AND INDICATOR LIGHTS

Refer to the Owner's Manual for countermeasures when each warning light comes on.  
If necessary, consult your authorized Subaru dealer.

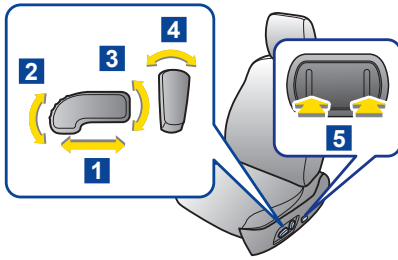
	<b>Seatbelt warning</b> Remind the driver to fasten seatbelt.	<b>PASSENGER</b> 	<b>Front passenger's seatbelt warning</b> Remind the front passenger to fasten seatbelt. Location: next to multi function display.
	<b>SRS airbag system warning</b> Frontal, side and curtain airbag or seatbelt pretensioner malfunction.	<b>CHECK ENGINE</b>	<b>CHECK ENGINE warning / Malfunction indicator</b> Engine/emission control system malfunction.
	<b>Charge warning</b> Charging system malfunction.		<b>Power steering warning</b> The electric power steering system malfunction.
	<b>Low fuel warning</b> Fuel level is low. Refill fuel immediately.	<b>AWD</b>	<b>All-wheel drive warning (CVT)</b> With tires of different diameter fitted or with the air pressure excessively low in any of its tires.
	<b>Hill start assist warning / Hill start assist OFF indicator</b> <b>Warning:</b> Hill start assist system malfunction <b>Indicator:</b> Hill start assist system OFF	<b>AT OIL TEMP</b>	<b>AT OIL TEMP warning (CVT)</b> <b>Illumination:</b> Transmission fluid temperature is too hot <b>Blinking:</b> Transmission control system malfunction.
	<b>Brake system warning</b> Parking brake on / Low fluid level / EBD System malfunction (Anti-lock brake system warning light illuminates simultaneously)/ The vacuum pump system malfunction.		<b>ABS warning</b> Anti-lock Brake System malfunction / EBD system malfunction (Brake system warning light illuminates simultaneously).
	<b>Oil pressure warning</b> Engine oil pressure is too low.		<b>Door open warning</b> Door or rear gate is ajar.
	<b>Engine low oil level warning</b> The engine oil level decreases to the lower limit.		<b>Windshield washer fluid warning</b> The fluid level in the windshield washer fluid tank decreases to the lower limit.
	<b>Front passenger's frontal airbag ON and OFF indicators</b> The indicators show you the status of the front passenger's SRS frontal airbag. Location: next to multi function display.		<b>Vehicle Dynamics Control OFF indicator</b> Vehicle Dynamics Control OFF switch is pressed to deactivate the Vehicle Dynamics Control system.
	<b>Vehicle Dynamics Control warning / Vehicle Dynamics Control operation indicator</b> <b>Warning:</b> Vehicle Dynamics Control system malfunction. <b>Indicator:</b> Flashes during activation of the skid suppression function and the traction control function.		
	<b>Coolant temperature low indicator / Coolant temperature high warning</b> <b>Illumination in BLUE:</b> insufficient warming up of the engine. <b>Illumination / blinking in RED:</b> engine overheating / almost overheating. <b>Blinking in RED and BLUE alternately:</b> electrical system malfunction.		

\*Some warning/indicator lights illuminate for a few seconds in order to check themselves when the ignition switch is turned ON.

# SEAT, SEATBELT

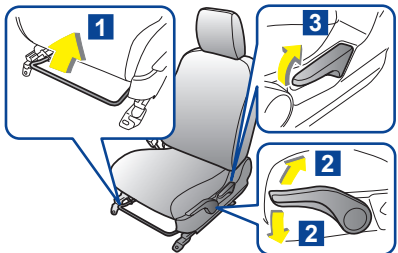


## A Front seat adjustment



### Power seat (driver's seat – if equipped)

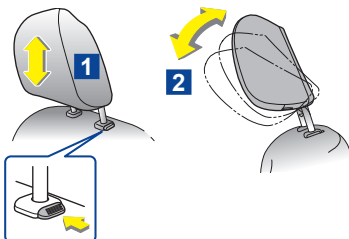
- 1 Forward and backward adjustment:** Move switch forward or backward.
- 2 Seat cushion angle:** Pull up or push down the front end of switch.
- 3 Seat height adjustment:** Pull up or push down the rear end of switch.
- 4 Seatback reclining:** Move switch forward or backward.
- 5 Lumbar support control:** Push the front side or the rear side of the switch.



### Manual seat (if equipped)

- 1 Forward and backward adjustment:** Pull bar up and slide seat forward or backward.
- 2 Seat height adjustment (driver's seat only):** Pull lever up to raise seat; push lever down to lower it.
- 3 Seatback reclining:** Pull lever up and move seatback forward or backward.

## B Head restraint adjustment



### 1 Height adjustment:

**To raise:** Pull the head restraint up.

**To lower:** Push the head restraint down while pressing the release button on the top of the seatback.

### 2 Angle adjustment:

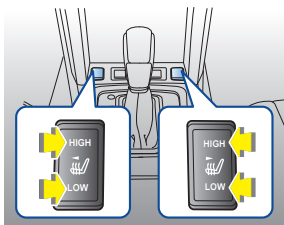
**To tilt:** Tilt the head restraint by hand to the preferred position.  
**To return:** Tilt the head restraint once as far forward as it can go. The head restraint will automatically return to the fully upright position.

**C** Folding down rear seatback



To fold rear seatback down, pull release knob and fold seatback down.

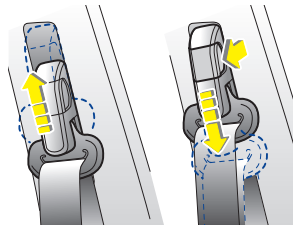
**D** Seat heater



**HIGH:** Rapid heating

**LOW:** Normal heating

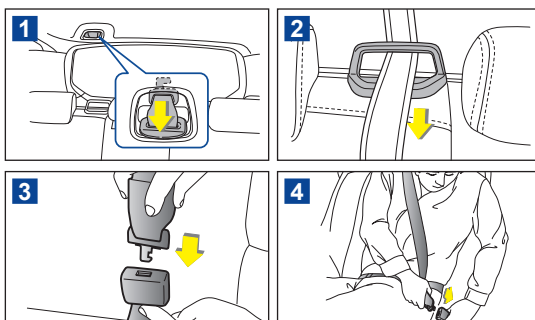
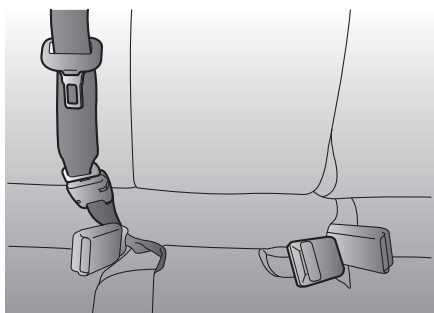
**E** Front seatbelt anchor height



**To raise:** Slide the anchor up.

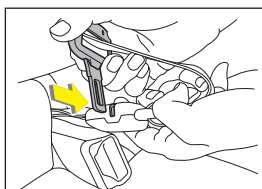
**To lower:** Pull the release knob and slide the anchor down.

**F** Rear center seatbelt



**To fasten:**

- 1** Remove the tongue plate from the slot in the recess by pulling the tongue plate, then pull out the seatbelt slowly.
- 2** Pass the seatbelt through the belt guide.
- 3** Connect webbing end to connector.
- 4** Fasten the seatbelt in the usual way.



**To disconnect connector from the buckle:**

Insert a tongue plate or other hard pointed object into the slot in the buckle.

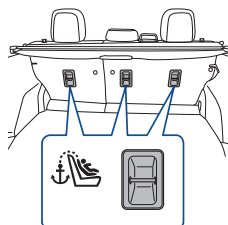
See the Owner's Manual Chapter 1 for details.

**G** Lower anchorages



Lower anchorages are provided for installing a child restraint system. They are located behind the cover of seat back bottom. See the Owner's Manual Chapter 1 for details.

**H** Top tether anchorages



Top tether anchorages are provided for installing child restraint system with top tether. They are located on the back side of the rear seat back. See the Owner's Manual Chapter 1 for details.

# DOOR LOCKS AND WINDOWS

## Remote keyless entry



Remote transmitter key

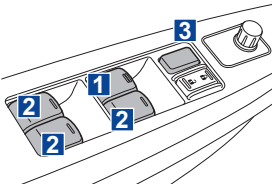
**Unlocking** : Press . Driver's door will be unlocked. To unlock all doors and rear gate, briefly press the button a second time within 5 seconds.

**Locking** : Press . All doors and the rear gate will be locked.

**Unlocking rear gate** : Press . For models with power rear gate refer to page 13.

For door unlock selection function, refer to Owner's Manual chapter 2.

## Power windows



Ignition switch must be in **ON**.

### 1 For driver's window

**One-touch auto down**: Push down switch firmly and release, window goes down all the way; pull switch up briefly to stop; press lightly and hold for normal operation.

**One-touch auto up**: Pull up switch firmly and release, window goes up all the way; push switch briefly to stop; pull lightly and hold for normal operation.

### 2 For passenger's window (front and rear)

Push switch down and hold to open; pull back and hold to close.

### 3 Lock switch

Press button down until clicks, only driver's window operates; press again and passenger windows function again.

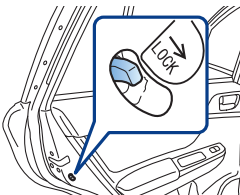
## Power door locking switch



To lock all doors and rear gate, push front side of the switch.

To unlock all doors and rear gate, push rear side of the switch.

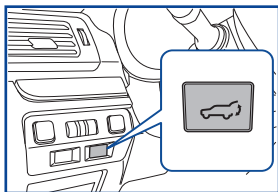
## Child safety locks



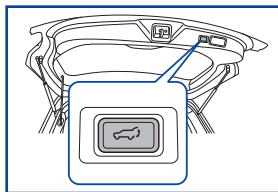
Located on the edge of the rear doors.

While lever is in the locked position, rear door cannot be opened from the inside.

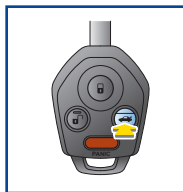
## Power rear gate (if equipped)



Power rear gate button on the instrument panel



Power rear gate button on the rear gate



Power rear gate button on the remote transmitter

### To open the rear gate:

Perform any of the following procedures when the rear gate is closed.

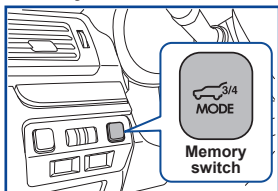
- Press and hold the power rear gate button on the instrument panel.
- Press and hold the power rear gate button on the remote transmitter.
- Press the rear gate opener button. (See page 12.)

### To close the rear gate:

Perform any of the following procedures when the rear gate is opened.

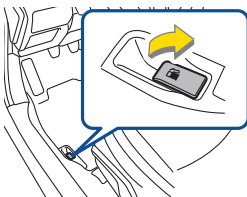
- Press and hold the power rear gate button on the instrument panel.
- Briefly press the power rear gate button on the rear gate.
- Press and hold the power rear gate button on the remote transmitter.

### Memory function



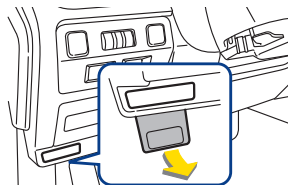
Your desired rear gate height can be registered with the memory switch. Please refer to Owner's Manual chapter 2.

## Fuel filler lid release lever



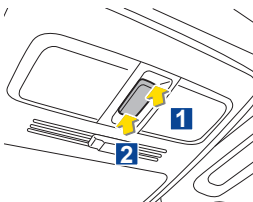
To open fuel filler lid, pull lever up.

## Hood lock release knob



To open engine hood, pull lever backward.

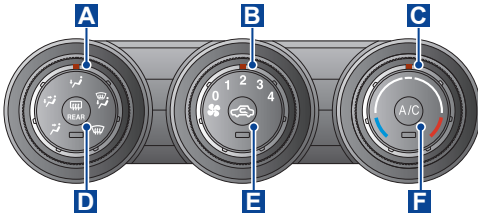
## Sunroof switch (if equipped)



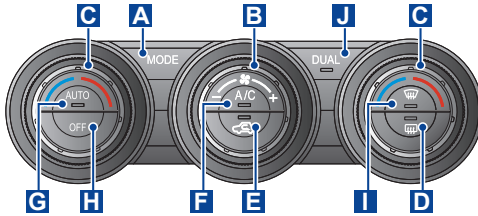
**1 Open:** Press the rear side.

**2 Close:** Press the front side.

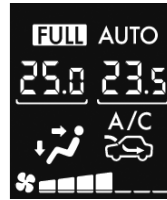
# CLIMATE CONTROL



Type A





Type B



Control panel  
for Type B

## A Airflow mode selection dial / button

Turn dial or press the button to select the desired air flow mode. For type A, to defrost windshield, place the dial in the  or  position.

## B Fan speed control dial


Turn dial to turn on and to select fan speeds.

## C Temperature control dial


Turn the dial to set the preferred interior temperature.

**Type B:** When the **DUAL** mode is selected, the setting of the driver's side and passenger's side temperature can be changed independently.

## D Rear window defogger / Outside mirror defogger (if equipped) / Windshield wiper deicer (if equipped)

Press  button to turn on rear window defogger, outside mirror defogger (if equipped) or wiper deicer (if equipped). The function will automatically shut off after about 15 min.

## E Air inlet selection button

Press  button to select air inlet.

**ON (recirculation):** The indicator light illuminates.

**OFF (outside air):** The indicator light is off.

## F Air conditioner button

Press **A/C** button to select air conditioner ON/OFF.

**ON:** The indicator light illuminates.

**OFF:** The indicator light is off.

**G AUTO button (for type B only)****FULL AUTO mode operation:**

When the **AUTO** button is pressed, the indicator light **FULL AUTO** on the display illuminates. In this state, fan speed, air flow distribution, air-inlet control, and air conditioner compressor operation are automatically controlled.

**AUTO mode operation:**

If you operate any of the buttons on the control panel other than the **OFF** button, rear window defogger button and temperature control dial(s) during **FULL AUTO** mode operation, the **FULL** indicator light on the control panel will turn off and **AUTO** will remain illuminated. You can then manually control the system as desired using the button you operated. To change the system back to the **FULL AUTO** mode, press the **AUTO** button.

**H OFF button (for type B only)**

Press this button to turn off the climate control system.

**I Defroster button (for type B only)**

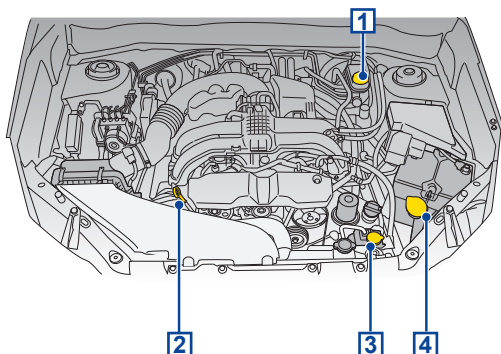
Press this button to defrost windshield.

**J DUAL mode button (for type B only)**

Press this button to separate temperature settings for the driver's side and passenger's side.

## MAINTENANCE

To keep your vehicle in proper operating condition and to assure peak performance at all times, the recommended maintenance service should be performed in accordance with the maintenance schedule. Refer to the Owner's Manual for information on maintenance items and intervals. Also, we recommend that you check your vehicle yourself daily for more comfortable use of your vehicle. When you are going to check your vehicle yourself, please do so in compliance with Chapter 11 in the Owner's Manual.

**Engine compartment overview**

- 1** Brake fluid reservoir / Clutch fluid reservoir (MT)
- 2** Engine oil level gauge
- 3** Engine coolant reservoir
- 4** Windshield washer tank

For models with other type of engine, refer to Owner's Manual.

subaru.ca

All illustrations, specifications, features and photographs contained in this brochure are based on product information available at the time of its printing, and may not be completely accurate following its publication. Colours shown may vary due to reproduction variations in the printing process, and some vehicle parts cannot be shown in certain photographs. Subaru Canada, Inc. reserves the right to discontinue or make changes at any time, without notice or incurring obligations, to colours, materials, equipment, accessories, features, specifications and models, or to change their prices. Please visit our Web site for the latest information and specifications. For detailed operating and safety information, please consult your Owner's Manual. For complete details on product updates, warranties or the Subaru C.A.R.E. program, please contact your Subaru dealer. Forester and Subaru are registered trademarks. Printed in Canada. © 2014 Subaru Canada, Inc. 2015 model year.



**Environmental Management System (EMS)**  
ISO 14001:2004 certified by SGS  
[www.subaru-earth.com](http://www.subaru-earth.com)

SUBARU CANADA, INC. / FUJII HEAVY INDUSTRIES LTD.