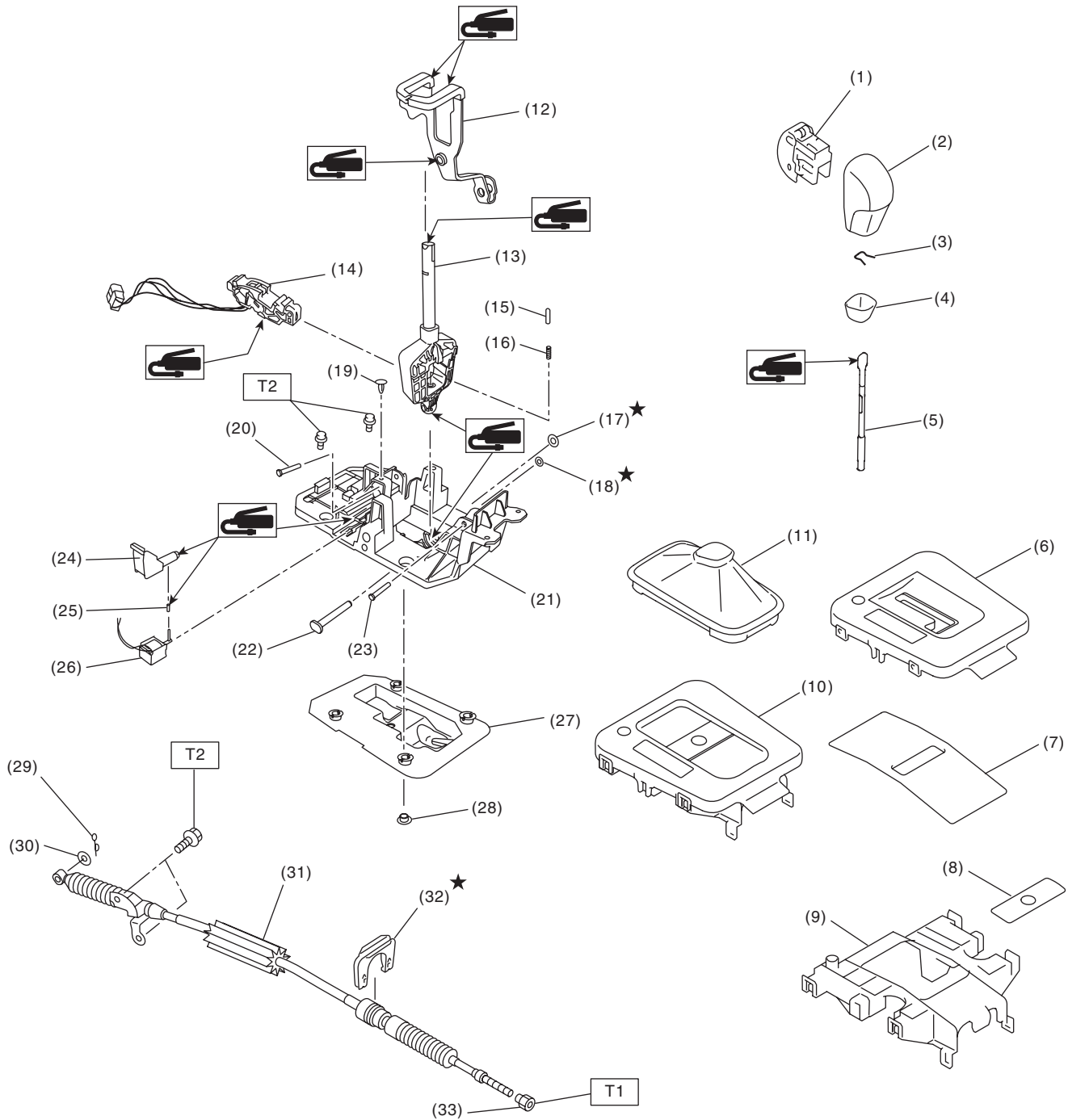


1. General Description

A: COMPONENT

1. AT SELECT LEVER



General Description

CONTROL SYSTEMS

(1) Button ASSY-AT	(14) Plate guide	(27) Gasket
(2) Grip sub ASSY	(15) Rod detent	(28) Spacer plate
(3) Clamp grip pin	(16) Detent spring	(29) Snap pin
(4) Cover grip AT (model with gate shifter)	(17) Clamp push nut	(30) Washer
(5) Rod COMPL	(18) Clamp push nut	(31) Select cable
(6) Indicator cover (model with gate shifter)	(19) Clamp pin	(32) Clamp
(7) Blind A (model with gate shifter)	(20) Spacer pin guide	(33) Nut
(8) Blind B (model with gate shifter)	(21) Plate COMPL	
(9) Housing (model with gate shifter)	(22) Shaft control	
(10) Indicator assembly (model with boot shifter)	(23) Spacer pin guide	
(11) Boot ASSY (model with boot shifter)	(24) Rod shift lock	
(12) Arm COMPL	(25) Cushion solenoid	
(13) Selector lever COMPL	(26) Solenoid unit	

Tightening torque:N·m (kgf-m, ft-lb)

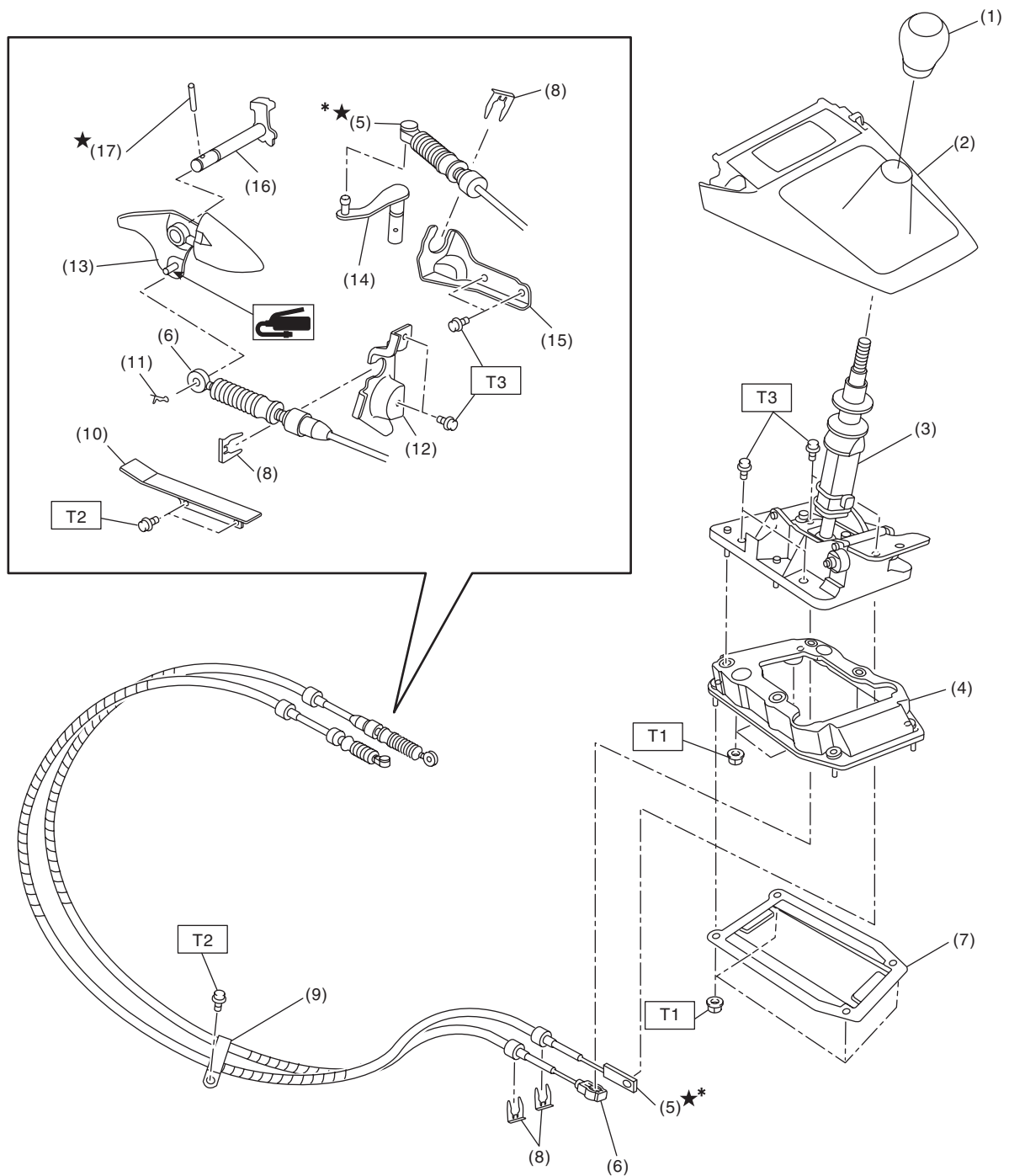
T1: 7.5 (0.8, 5.5)

T2: 18 (1.8, 13.3)

General Description

CONTROL SYSTEMS

2. 6MT GEAR SHIFT LEVER



CS-01688

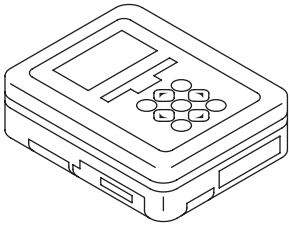
- | | | |
|---------------------------|---------------------------|-----------------|
| (1) Shift knob | (9) Cable clamp | (17) Spring pin |
| (2) Cover - shift lever | (10) Dust cover | |
| (3) Gear shift lever ASSY | (11) Snap pin | |
| (4) Cable cover ASSY | (12) Shift bracket | |
| (5) MT gear select cable | (13) Shift lever COMPL | |
| (6) MT gear shift cable | (14) Selector lever COMPL | |
| (7) Cable cover plate | (15) Select bracket | |
| (8) Clamp | (16) Shifter arm No. 2 | |

Tightening torque: N·m (kgf-m, ft-lb)
T1: 7.5 (0.8, 5.5)**T2: 15 (1.5, 11.1)****T3: 18 (1.8, 13.3)**

*: Always use new MT gear select cable if the cable is removed from select lever COMPL of transmission side.

B: PREPARATION TOOL

1. SPECIAL TOOL

ILLUSTRATION	TOOL NUMBER	DESCRIPTION	REMARKS
 ST1B022XU0	1B022XU0	SUBARU SELECT MONITOR III KIT	Used for troubleshooting the electrical system.

2. GENERAL TOOL

TOOL NAME	REMARKS
Circuit tester	Used for measuring resistance and voltage.

C: CAUTION

- Wear appropriate work clothing, including a cap, protective goggles and protective shoes when performing any work.
- Remove contamination including dirt and corrosion before removal, installation or disassembly.
- Keep the disassembled parts in order and protect them from dust and dirt.
- Before removal, installation or disassembly, be sure to clarify the failure. Avoid unnecessary removal, installation, disassembly and replacement.
- Use SUBARU genuine fluid, grease etc. or equivalent. Do not mix fluid, grease, etc. of different grades or manufacturers.
- Be sure to tighten fasteners including bolts and nuts to the specified torque.
- Place shop jacks or rigid racks at the specified points.
- Apply grease onto sliding or revolving surfaces before installation.
- Before installing O-rings or snap rings, apply sufficient amount of fluid to avoid damage and deformation.
- Before securing a part in a vise, place cushioning material such as wood blocks, aluminum plate or cloth between the part and the vise.
- Before disconnecting electrical connectors, be sure to disconnect the negative terminal from battery.