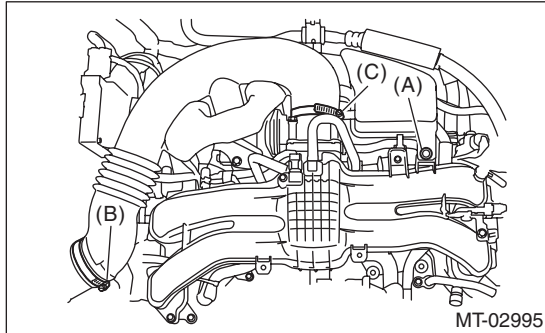


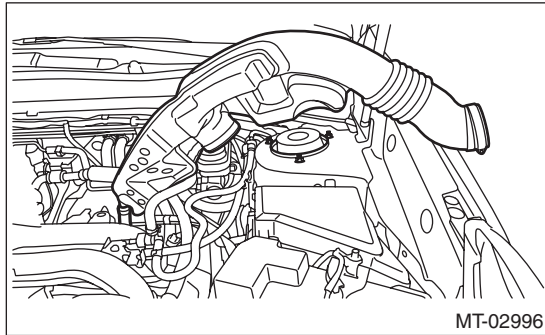
### 7. Clutch Pipe and Hose

#### A: REMOVAL

- 1) Remove the clip (A) from the air intake boot.
- 2) Loosen the clamp (B) connecting the air intake boot and air cleaner case (rear).
- 3) Loosen the clamp (C) which connects the air intake boot and throttle body.

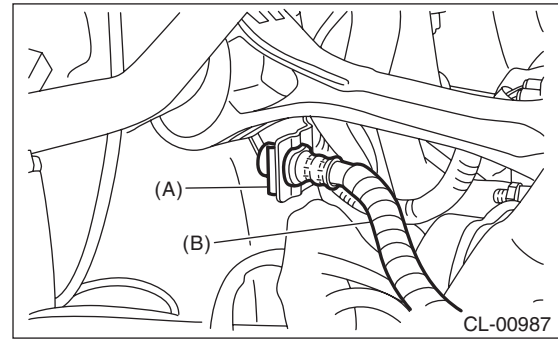


- 4) Remove the air intake boot from the throttle body, and move it to the left side wheel apron.



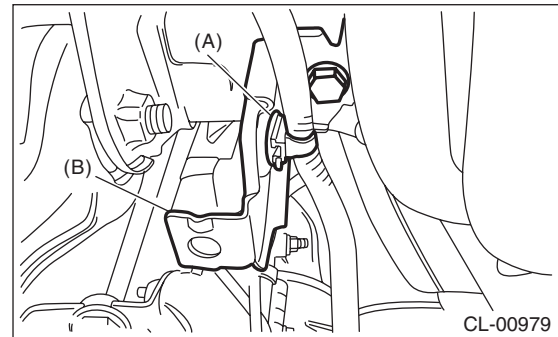
- 5) Drain the clutch fluid. <Ref. to CL-24, Clutch Fluid.>
- 6) Disconnect the clutch pipe from the clutch hose and master cylinder.

- 7) Pull out the clamp, then remove the clutch hose from the bracket.



- (A) Clamp  
(B) Clutch hose

- 8) Disconnect the hose from operating cylinder.
- 9) Remove the harness clip from the bracket.



- (A) Harness clip  
(B) Bracket

- 10) Remove the bracket.

## B: INSTALLATION

Install in the reverse order of removal.

### NOTE:

Bleed air from the clutch fluid. <Ref. to CL-25, Clutch Fluid Air Bleeding.>

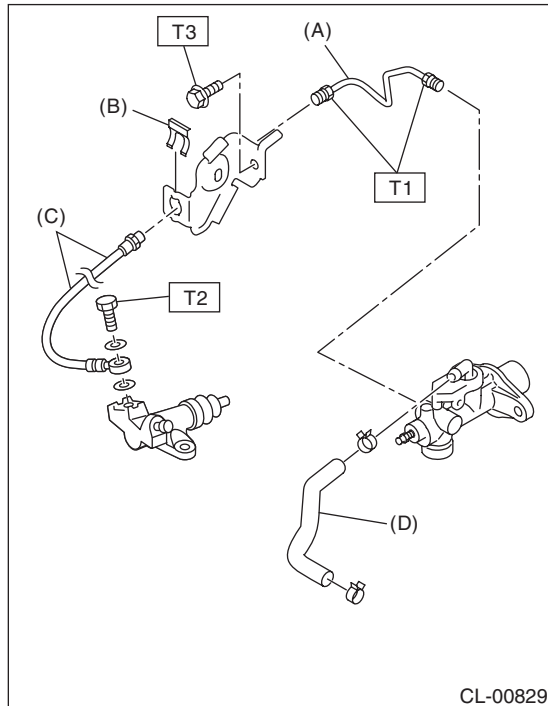
### Tightening torque:

#### Clutch

**T1: 15 N·m (1.5 kgf-m, 11.1 ft-lb)**

**T2: 18 N·m (1.8 kgf-m, 13.3 ft-lb)**

**T3: 25 N·m (2.5 kgf-m, 18.4 ft-lb)**



- (A) Clutch pipe
- (B) Clamp
- (C) Clutch hose
- (D) Tank hose

### Tightening torque:

#### Air intake boot

**3 N·m (0.3 kgf-m, 2.2 ft-lb)**

## C: INSPECTION

Check the pipes and hoses for breaks and damage. Check joints for fluid leakage. If crack, breakage or damage is found, repair or replace the faulty pipe or hose.