

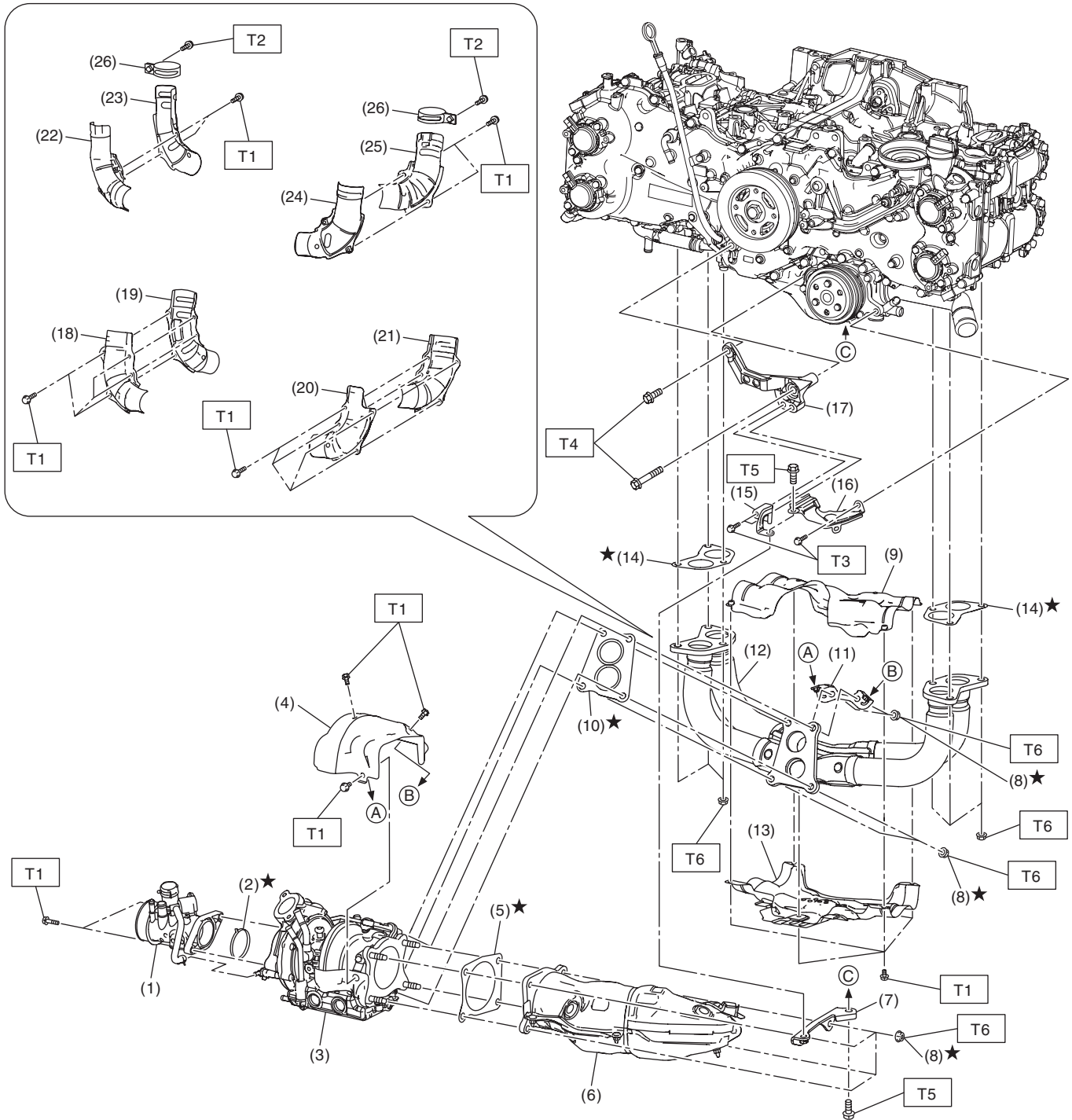
General Description

EXHAUST

1. General Description

A: COMPONENT

1. FRONT EXHAUST PIPE



EX-03086

General Description

EXHAUST

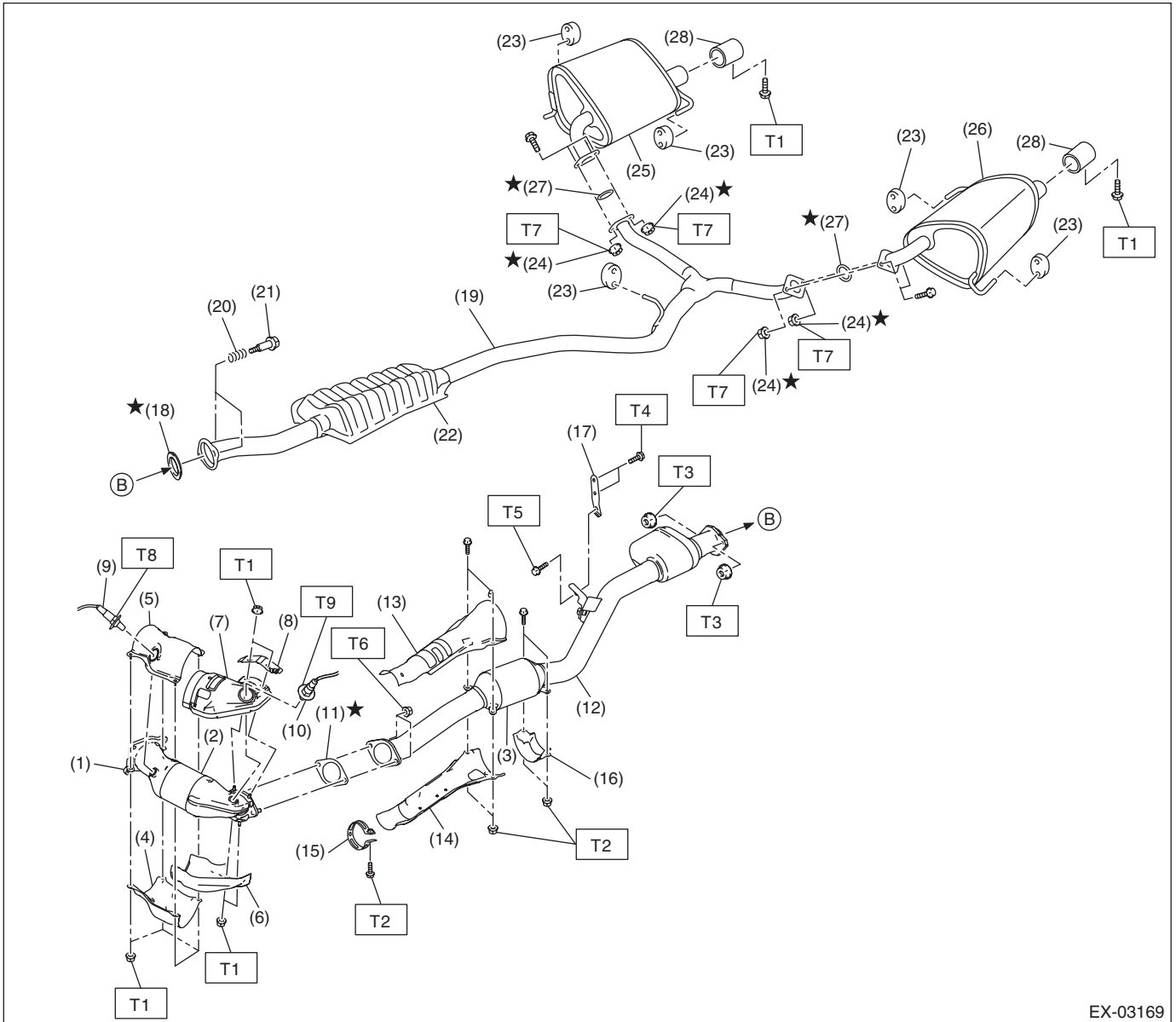
| | | |
|---------------------------------|------------------------------|------------------------------|
| (1) Intake duct No. 1 | (13) Exhaust pipe cover C | (25) Exhaust pipe cover K |
| (2) O-ring | (14) Gasket | (26) Front exhaust pipe band |
| (3) Turbocharger | (15) Exhaust pipe stay B | |
| (4) Exhaust pipe cover A | (16) Water pump pulley cover | |
| (5) Gasket | (17) Turbocharger stay B | |
| (6) Center exhaust pipe (front) | (18) Exhaust pipe cover D | |
| (7) Turbocharger stay A | (19) Exhaust pipe cover E | |
| (8) Self-locking nut | (20) Exhaust pipe cover F | |
| (9) Exhaust pipe cover B | (21) Exhaust pipe cover G | |
| (10) Gasket | (22) Exhaust pipe cover H | |
| (11) Exhaust pipe stay A | (23) Exhaust pipe cover I | |
| (12) Front exhaust pipe | (24) Exhaust pipe cover J | |

Tightening torque: N·m (kgf-m, ft-lb)**T1: 6.4 (0.7, 4.7)****T2: 13 (1.3, 9.6)****T3: 19 (1.9, 14.0)****T4: 30 (3.1, 22.1)****T5: 33 (3.4, 24.3)****T6: 42.5 (4.3, 31.3)**

General Description

EXHAUST

2. CENTER AND REAR EXHAUST PIPE, AND MUFFLER



EX-03169

General Description

EXHAUST

- | | |
|---------------------------------|-------------------------------|
| (1) Center exhaust pipe (front) | (14) Exhaust pipe cover G |
| (2) Front catalytic converter | (15) Center exhaust pipe band |
| (3) Rear catalytic converter | (16) Exhaust pipe cover H |
| (4) Exhaust pipe cover A | (17) Hanger bracket |
| (5) Exhaust pipe cover B | (18) Gasket |
| (6) Exhaust pipe cover C | (19) Rear exhaust pipe |
| (7) Exhaust pipe cover D | (20) Spring |
| (8) Exhaust pipe cover E | (21) Bolt |
| (9) Front oxygen (A/F) sensor | (22) Chamber |
| (10) Rear oxygen sensor | (23) Cushion rubber |
| (11) Gasket | (24) Self-locking nut |
| (12) Center exhaust pipe (rear) | (25) Muffler RH |

- | | |
|---------------------------|-----------------|
| (13) Exhaust pipe cover F | (26) Muffler LH |
|---------------------------|-----------------|

- | |
|---------------------|
| (27) Gasket |
| (28) Muffler cutter |

Tightening torque: N·m (kgf-m, ft-lb)

T1: 7.5 (0.8, 5.5)

T2: 13 (1.3, 9.6)

T3: 18 (1.8, 13.3)

T4: 23 (2.3, 17.0)

T5: 35 (3.6, 25.8)

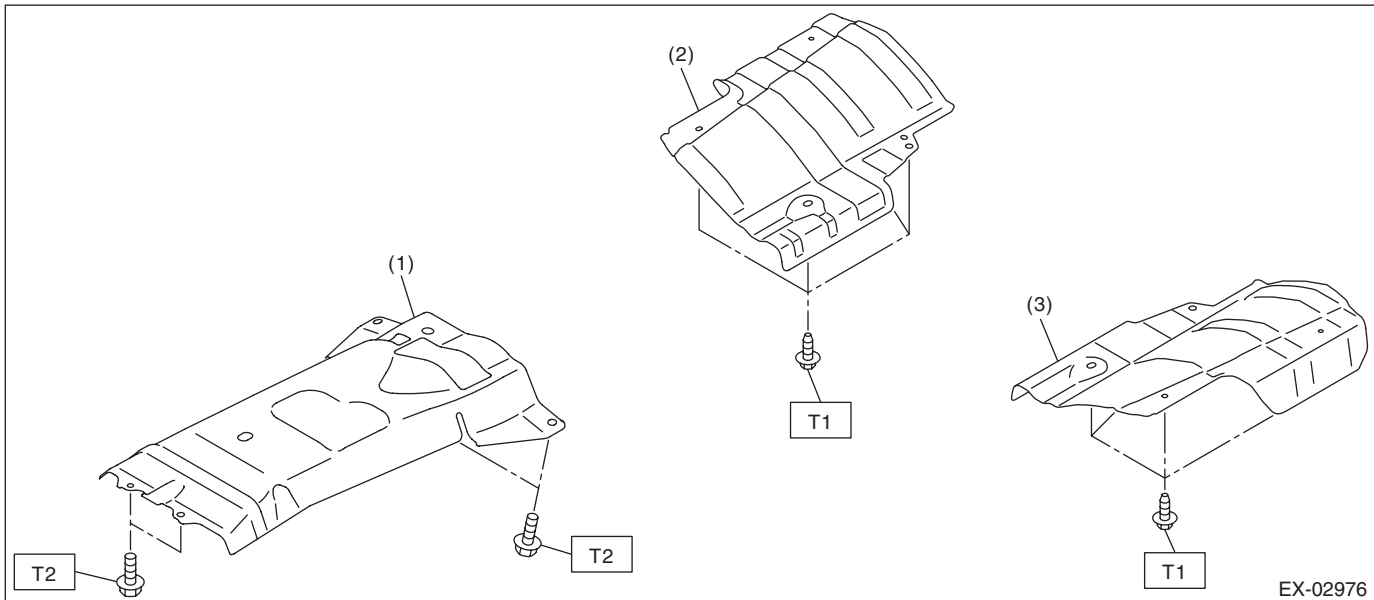
T6: 42.5 (4.3, 31.3)

T7: 48 (4.9, 35.4)

T8: <Ref. to FU(H4DOTC)-129, INSTALLATION, Front Oxygen (A/F) Sensor.>

T9: <Ref. to FU(H4DOTC)-132, INSTALLATION, Rear Oxygen Sensor.>

3. HEAT SHIELD COVER



- | | |
|---------------------------|---------------------------|
| (1) Center exhaust cover | (3) Rear exhaust cover LH |
| (2) Rear exhaust cover RH | |

Tightening torque: N·m (kgf-m, ft-lb)

T1: 10 (1.0, 7.4)

T2: 18 (1.8, 13.3)

General Description

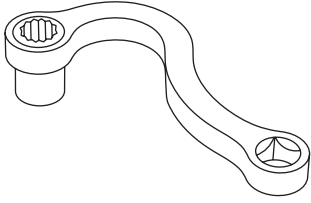
EXHAUST

B: CAUTION

- Prior to starting work, pay special attention to the following:
 1. Always wear work clothes, a work cap, and protective shoes. Additionally, wear a helmet, protective goggles, etc. if necessary.
 2. Protect the vehicle using a seat cover, fender cover, etc.
 3. Prepare the service tools, clean cloth, containers to catch grease and oil, etc.
- Vehicle components are extremely hot immediately after driving. Be wary of receiving burns from heated parts.
- When performing a repair, identify the cause of trouble and avoid unnecessary removal, disassembly and replacement.
- Before disconnecting connectors of sensors or units, be sure to disconnect the ground cable from battery.
- Always use the jack-up point when the shop jacks or rigid racks are used to support the vehicle.
- Remove contamination including dirt and corrosion before removal, installation, disassembly or assembly.
- Keep the removed parts in order and protect them from dust and dirt.
- All removed parts, if to be reused, should be reinstalled in the original positions with attention to the correct directions, etc.
- Bolts, nuts and washers should be replaced with new parts as required.
- Be sure to tighten the fasteners including bolts and nuts to the specified torque.
- If any grease adheres to the exhaust pipe, wipe it off. Otherwise a fire may happen.

C: PREPARATION TOOL

1. SPECIAL TOOL

| ILLUSTRATION | TOOL NUMBER | DESCRIPTION | REMARKS |
|---|-------------|-------------------|---|
|  ST18283AA010 | 18283AA010 | WRENCH ADAPTER | Used for removing and installing center exhaust pipe (front). |

2. GENERAL TOOL

| TOOL NAME | REMARKS |
|------------------|---|
| TORX® socket E10 | Used for removing and installing center exhaust pipe (front). |