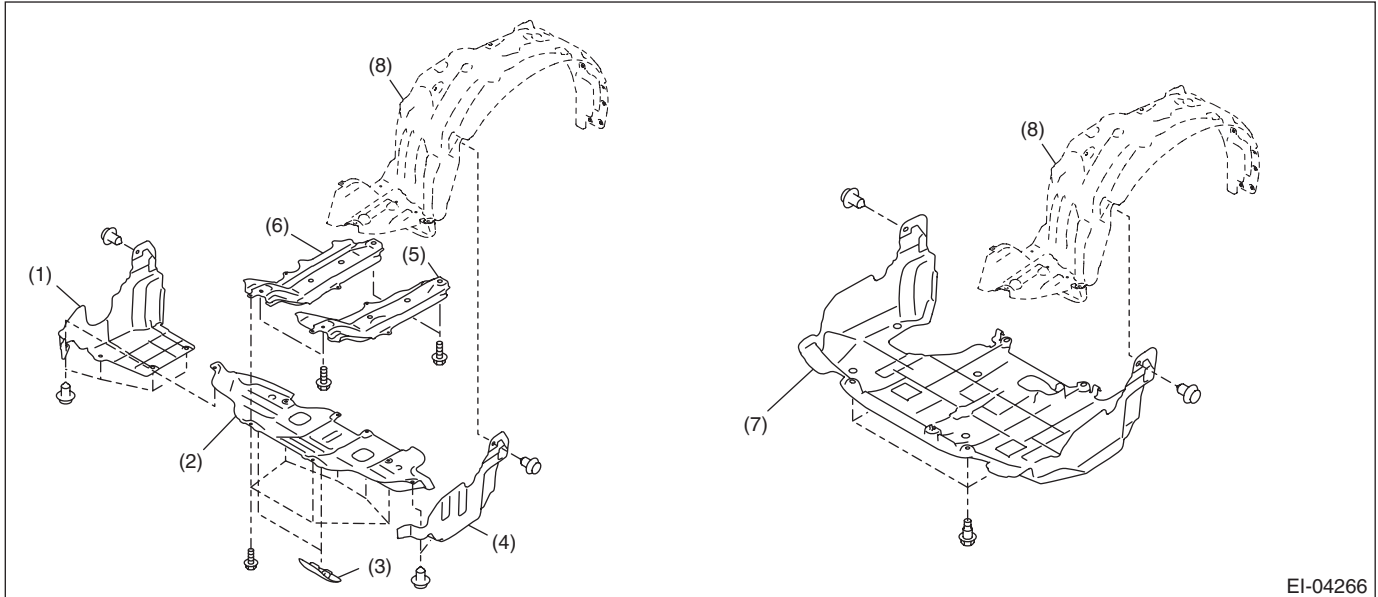


5. Front Stabilizer

A: REMOVAL

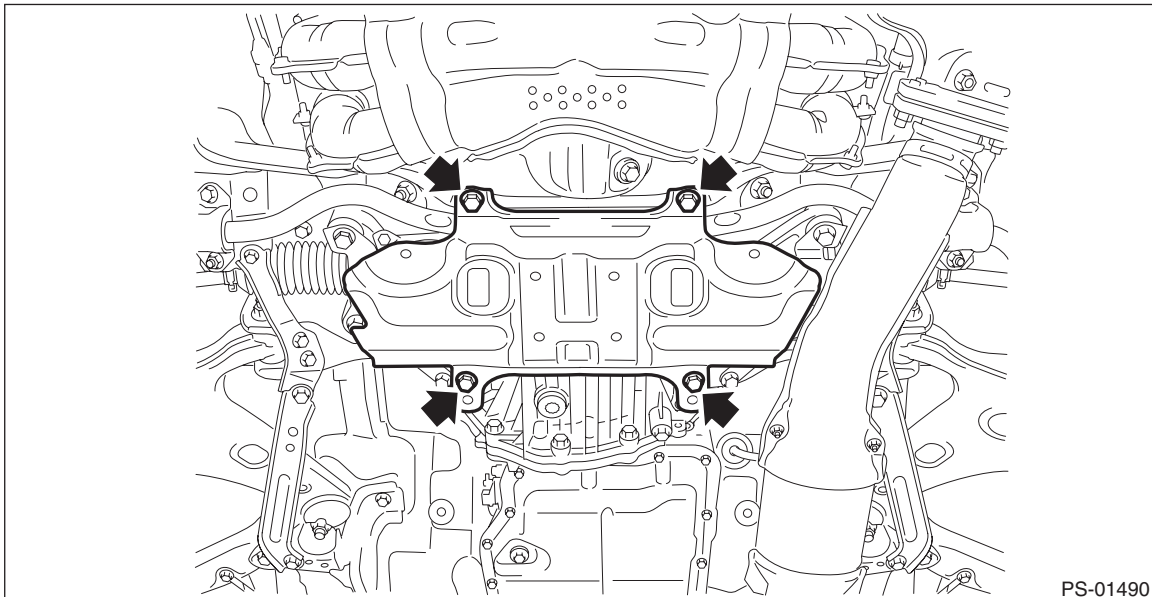
- 1) Lift up the vehicle, and then remove the left and right front wheels.
- 2) Remove the bolts and clips, and remove the under cover - front.



EI-04266

- | | | |
|--|--|---|
| (1) Under cover COMPL - front RH (turbo model) | (4) Under cover COMPL - front LH (turbo model) | (7) Under cover - front (non-turbo model) |
| (2) Plate CTR - aluminum (turbo model) | (5) Under cover - front guard LH (turbo model) | (8) Mud guard - front |
| (3) Cover - plate (turbo model) | (6) Under cover - front guard RH (turbo model) | |

- 3) Remove the bolt, and remove the front crossmember support.

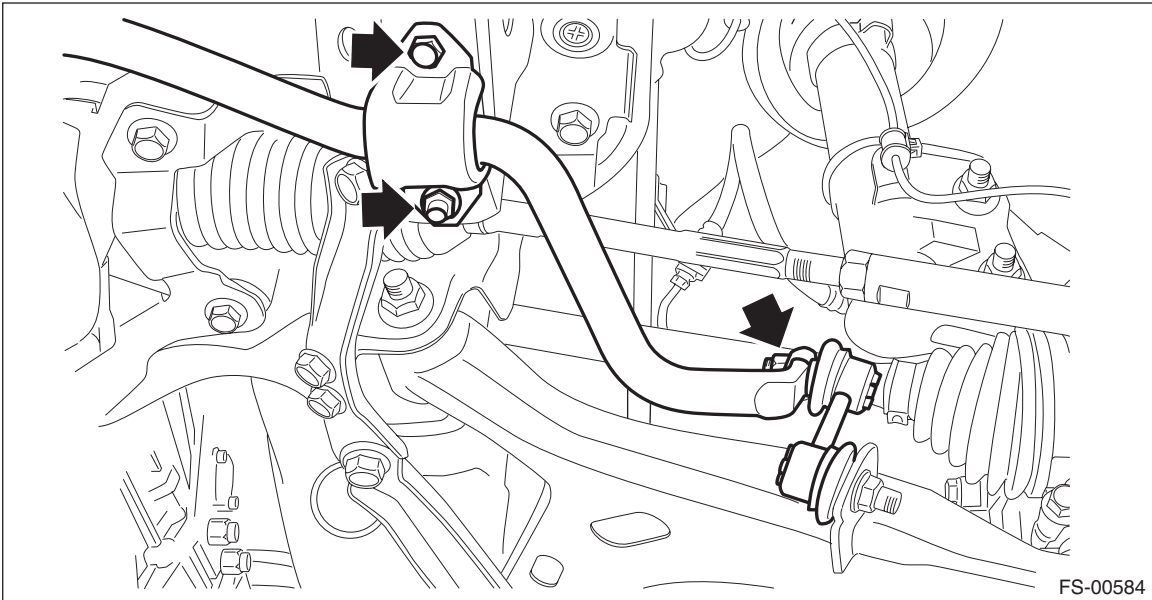


PS-01490

Front Stabilizer

FRONT SUSPENSION

- 4) Remove the front stabilizer.
- (1) Remove the left and right stabilizer links.
 - (2) Remove the clamp - stabilizer bushing on the left and right sides.

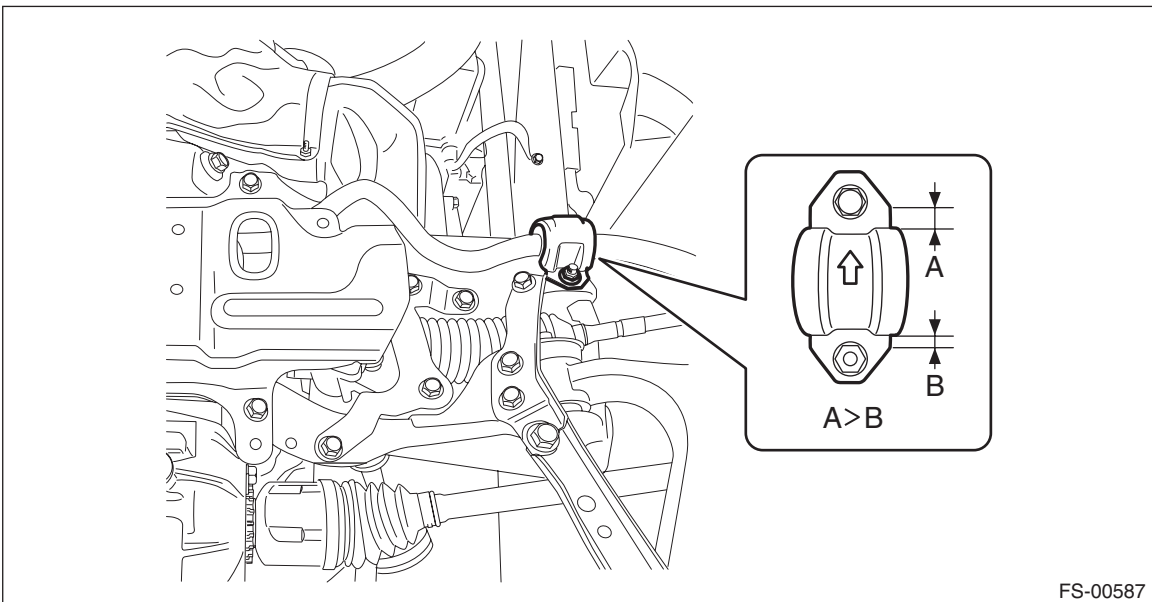


B: INSTALLATION

- 1) Before installation, inspect the following items and replace any faulty part with a new one.
 - Check the bushing - stabilizer for abnormal cracks, fatigue or damage.
 - Check the stabilizer link assembly for damage.
- 2) Install each part in the reverse order of removal.

CAUTION:

Install the clamp - stabilizer bushing with the arrow mark facing the front of the vehicle.



Tightening torque:

Clamp - stabilizer bushing: 25 N·m (2.55 kgf-m, 18.4 ft-lb)

Stabilizer link assembly: 60 N·m (6.12 kgf-m, 44.3 ft-lb)

Support plate - front crossmember: 60 N·m (6.12 kgf-m, 44.3 ft-lb)

Under cover - front: <Ref. to EI-2, FRONT UNDER COVER, COMPONENT, General Description.>

- 3) Install the front wheels.

Tightening torque:

120 N·m (12.24 kgf-m, 88.5 ft-lb)