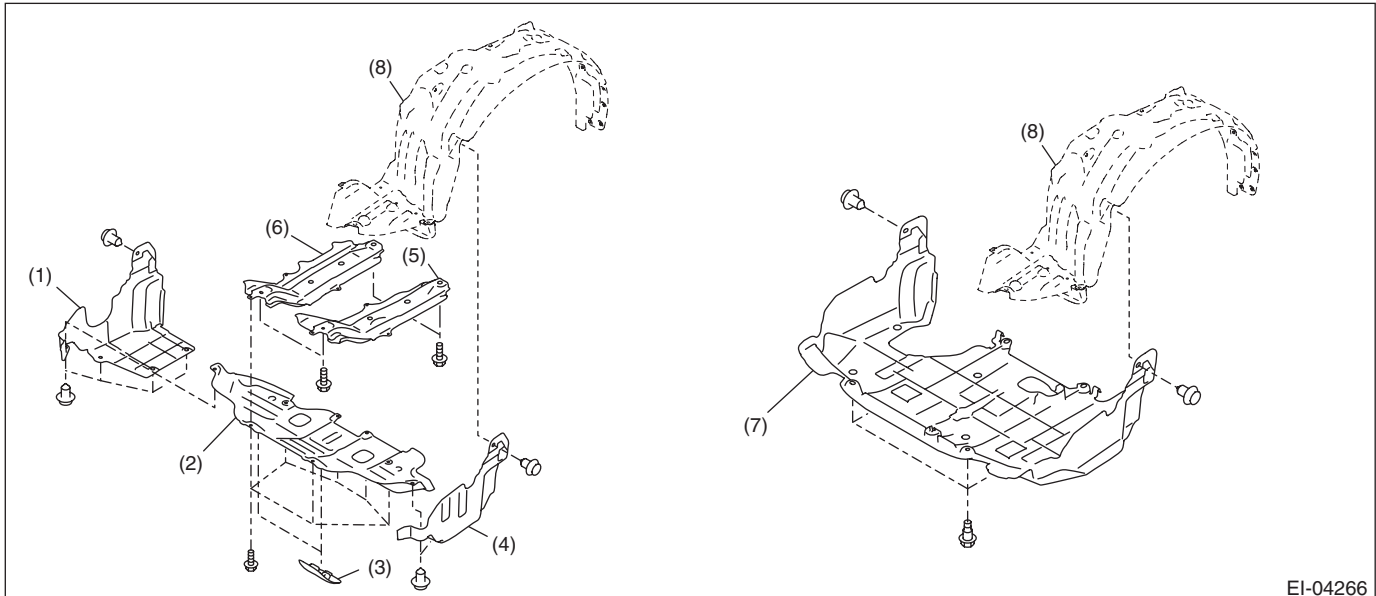


4. Front Crossmember Support Plate

A: REMOVAL

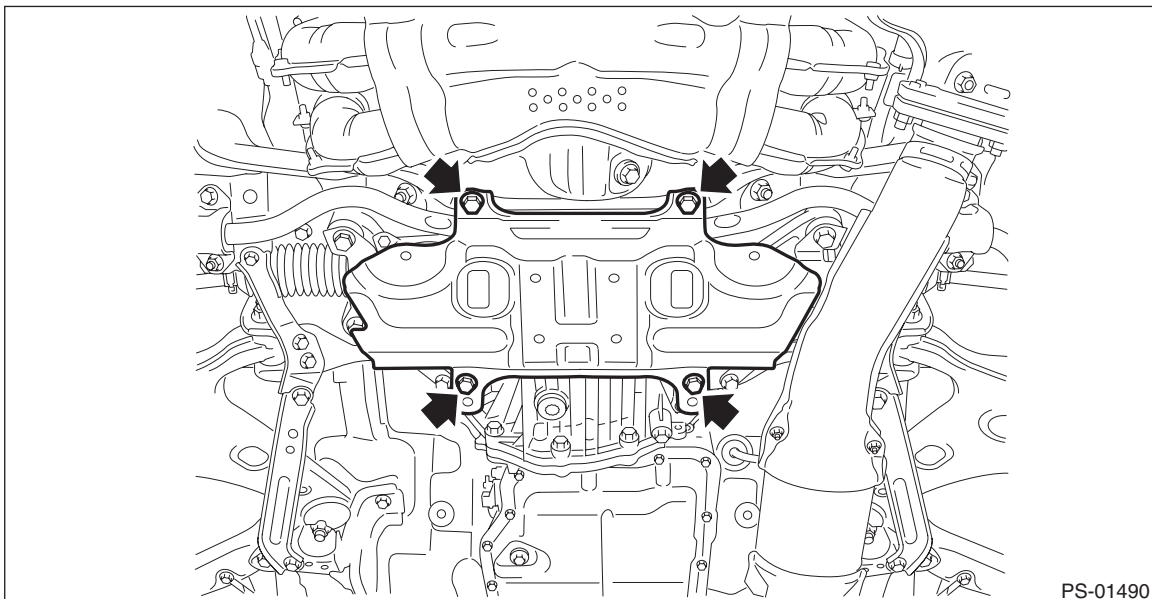
- 1) Lift up the vehicle.
- 2) Remove the bolts and clips, and remove the under cover - front.



EI-04266

- | | | |
|--|--|---|
| (1) Under cover COMPL - front RH (turbo model) | (4) Under cover COMPL - front LH (turbo model) | (7) Under cover - front (non-turbo model) |
| (2) Plate CTR - aluminum (turbo model) | (5) Under cover - front guard LH (turbo model) | (8) Mud guard - front |
| (3) Cover - plate (turbo model) | (6) Under cover - front guard RH (turbo model) | |

- 3) Remove the bolt, and remove the front crossmember support.



PS-01490

Front Crossmember Support Plate

FRONT SUSPENSION

B: INSTALLATION

Install each part in the reverse order of removal.

Tightening torque:

Front crossmember support — front crossmember assembly: 60 N·m (6.12 kgf-m, 44.3 ft-lb)

Under cover - front:<Ref. to EI-2, FRONT UNDER COVER, COMPONENT, General Description.>