

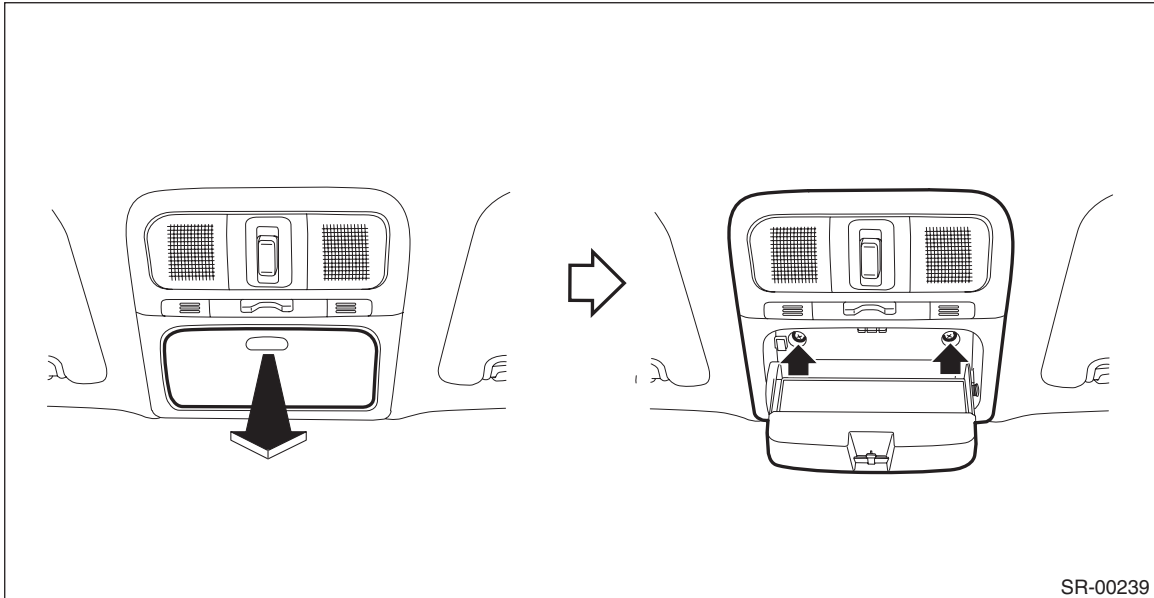
Sunroof Switch

SUNROOF/T-TOP/CONVERTIBLE TOP (SUNROOF)

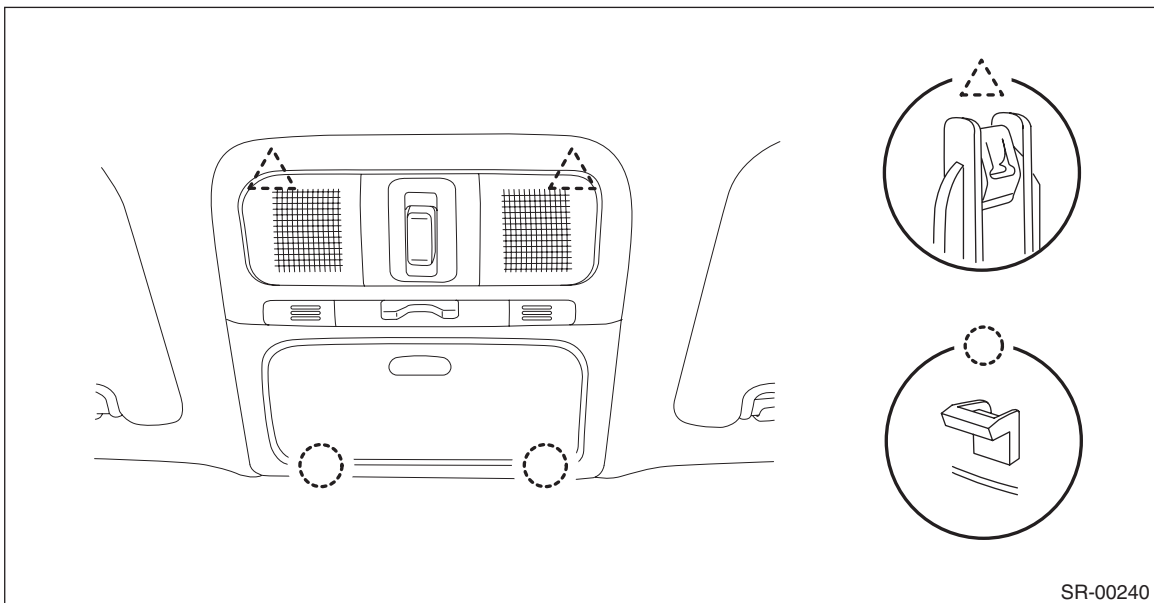
7. Sunroof Switch

A: REMOVAL

- 1) Disconnect the ground cable from battery.
- 2) Remove the light assembly - map. (Models without EyeSight)
 - (1) Remove the screws.



- (2) Release the clips and pull out the light assembly - map to disconnect the connectors.

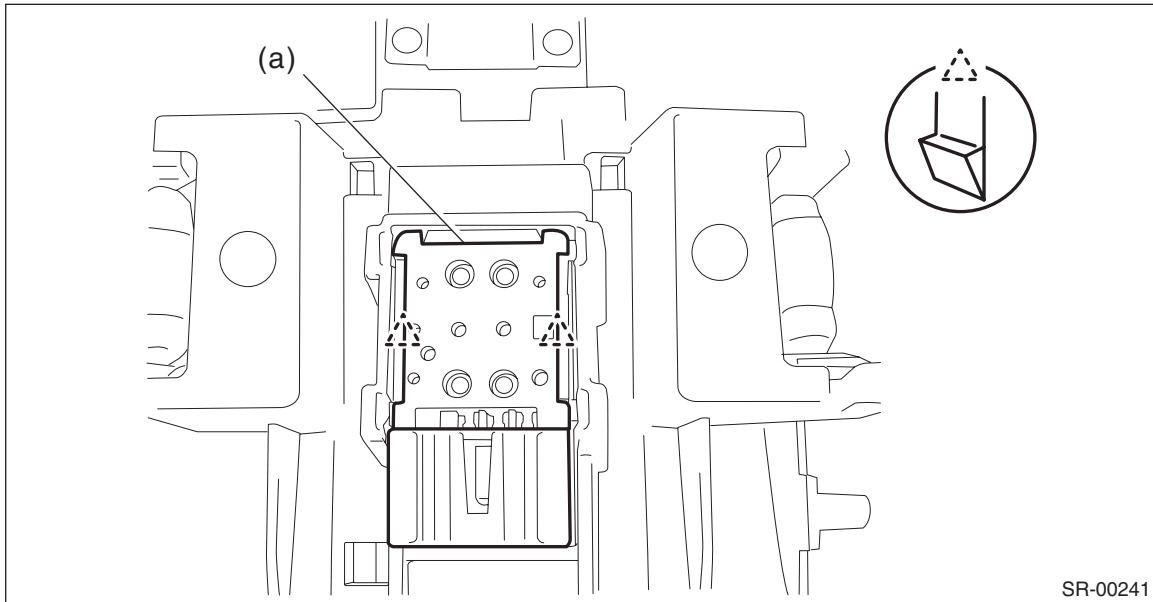


- 3) Remove the stereo camera cover. (Models with EyeSight) <Ref. to ES-11, REMOVAL, Stereo Camera.>

Sunroof Switch

SUNROOF/T-TOP/CONVERTIBLE TOP (SUNROOF)

4) Release the claws and remove the sunroof switch (a) from the light assembly - map.



B: INSTALLATION

CAUTION:

For installation of the stereo camera cover, refer to “INSTALLATION”, “Stereo Camera Cover” in the “EyeSight” section and observe the precautions for installation. <Ref. to ES-15, INSTALLATION, Stereo Camera.>

Install each part in the reverse order of removal.

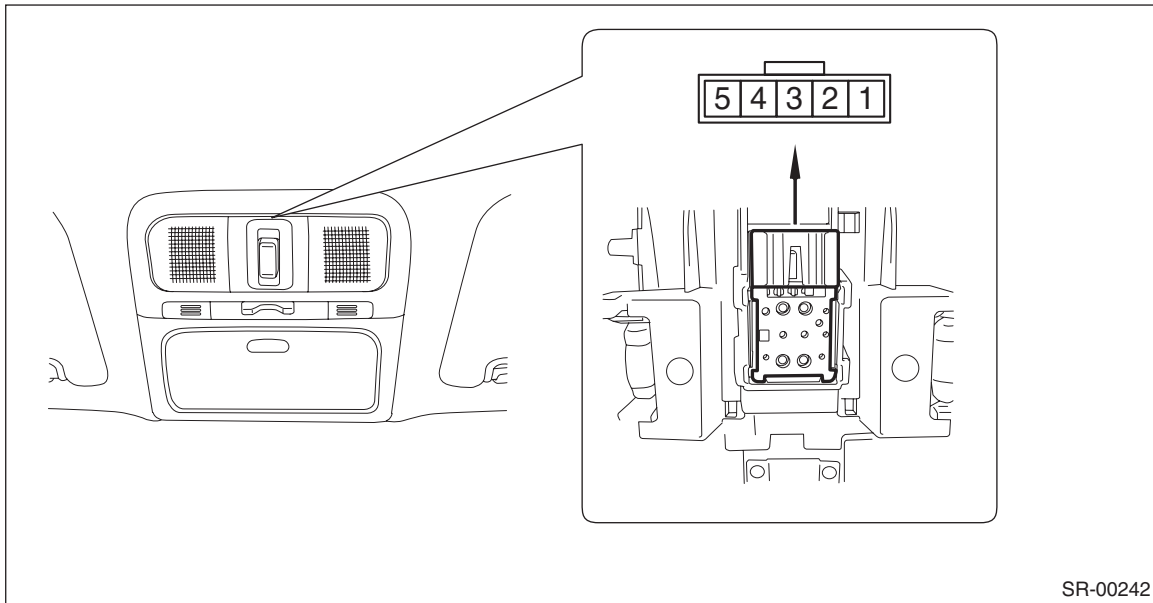
Sunroof Switch

SUNROOF/T-TOP/CONVERTIBLE TOP (SUNROOF)

C: INSPECTION

- 1) Remove the sunroof switch. <Ref. to SR-20, INSPECTION, Sunroof Switch.>
- 2) Check the resistance between sunroof switch terminals.

Preparation tool:
Circuit tester



Terminal No.	Inspection conditions	Standard	Connector No.
1 — 3	Open	Less than 1 Ω	R128
4 — 3	Close	Less than 1 Ω	

- 3) Replace the sunroof switch if the inspection result is not within the standard value.