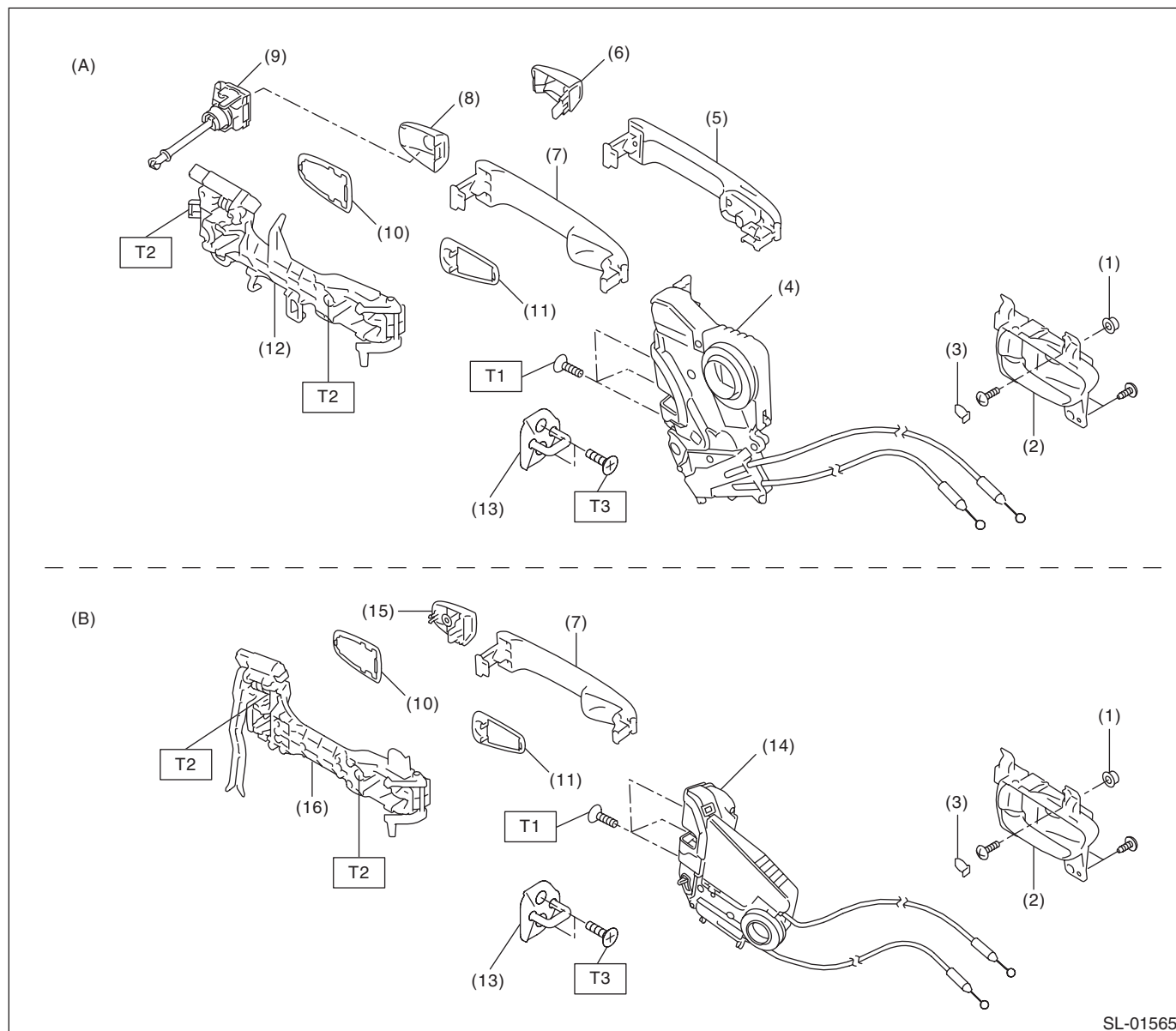


1. General Description

A: COMPONENT

1. DOOR LOCK ASSEMBLY



SL-01565

(A) Front

(B) Rear

(1) Grommet - screw

(8) Cover - handle front outer (driver's seat)

(15) Cover - handle rear outer

(2) Remote ASSY - door

(9) Key lock - door (driver's seat only)

(16) Frame ASSY - rear door outer

(3) Cap remote

(10) Spacer - door handle outer B

Tightening torque: N·m (kgf-m, ft-lb)

(4) Latch & actuator ASSY - front

(11) Spacer - door handle outer A

T1: 6.5 (0.7, 4.8)

(5) Handle - door outer (model with keyless access)

(12) Frame ASSY - front door outer

T2: 7.5 (0.8, 5.5)

(6) Cover - handle front outer (passenger's seat)

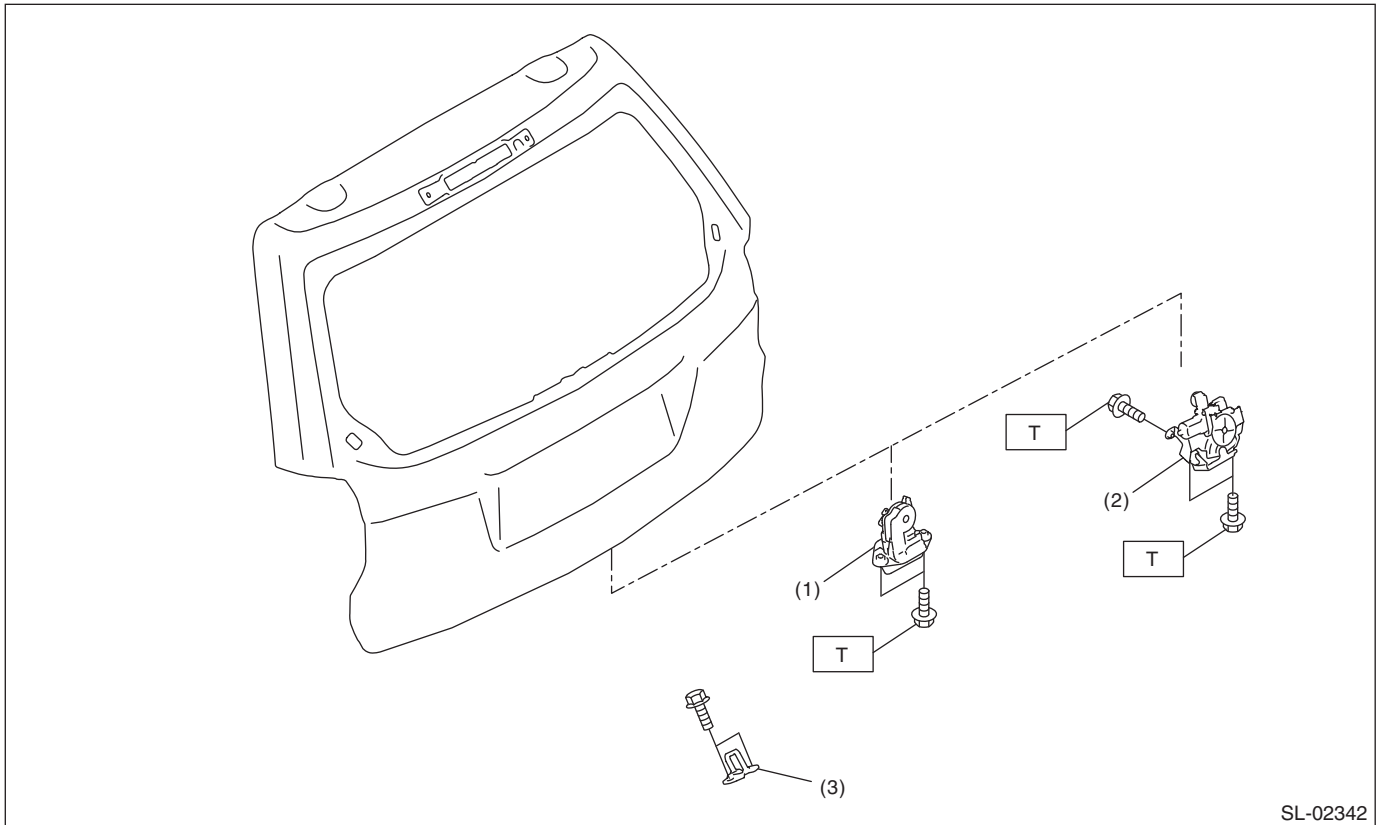
(13) Striker - door

T3: 18 (1.8, 13.3)

(7) Handle - door outer (model without keyless access)

(14) Latch & actuator ASSY - rear

2. REAR GATE LOCK



- (1) Latch & actuator - rear gate
- (2) Power rear gate auto closer

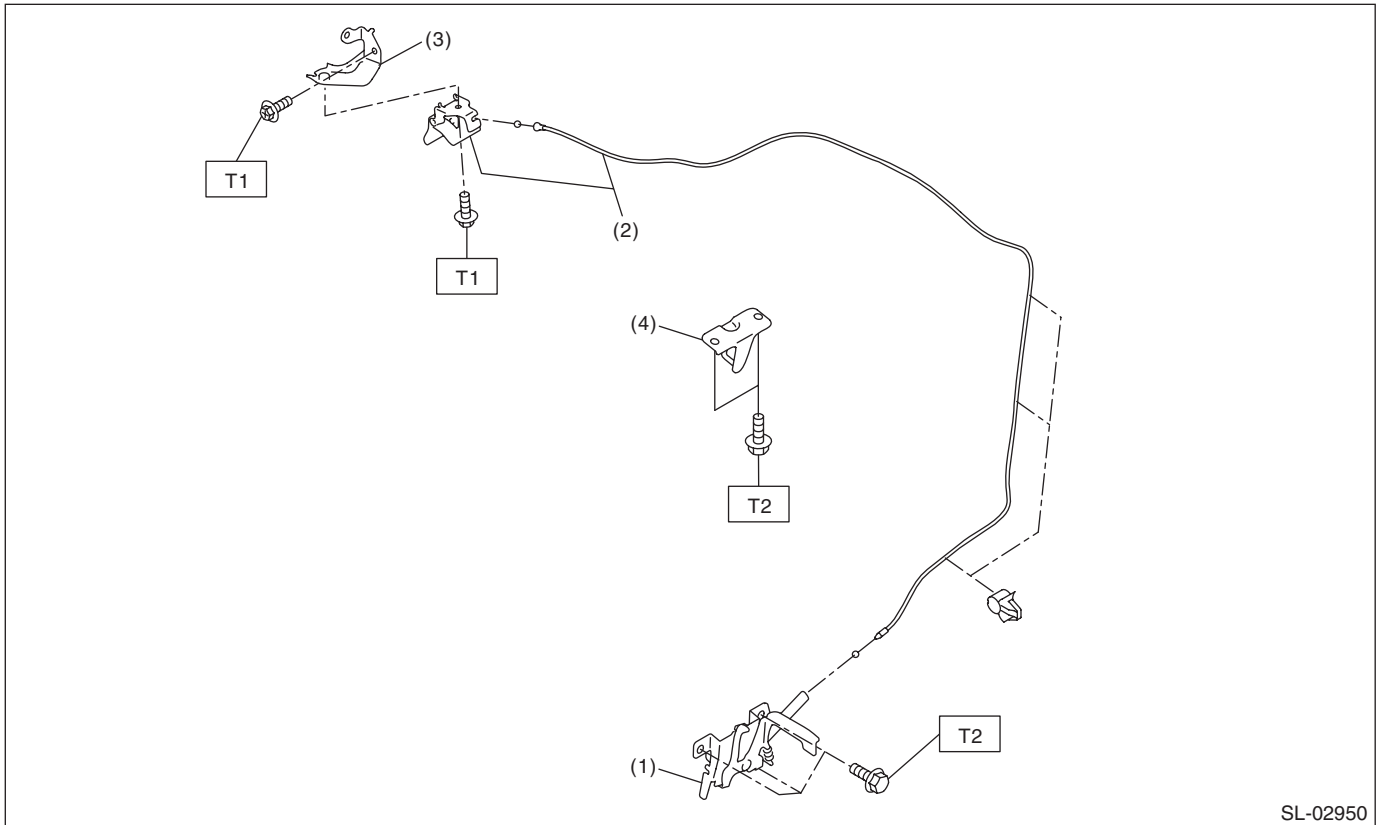
- (3) Striker - rear gate

Tightening torque: N·m (kgf-m, ft-lb)
T: 25 (2.55, 18.4)

General Description

SECURITY AND LOCKS

3. FRONT HOOD LOCK



SL-02950

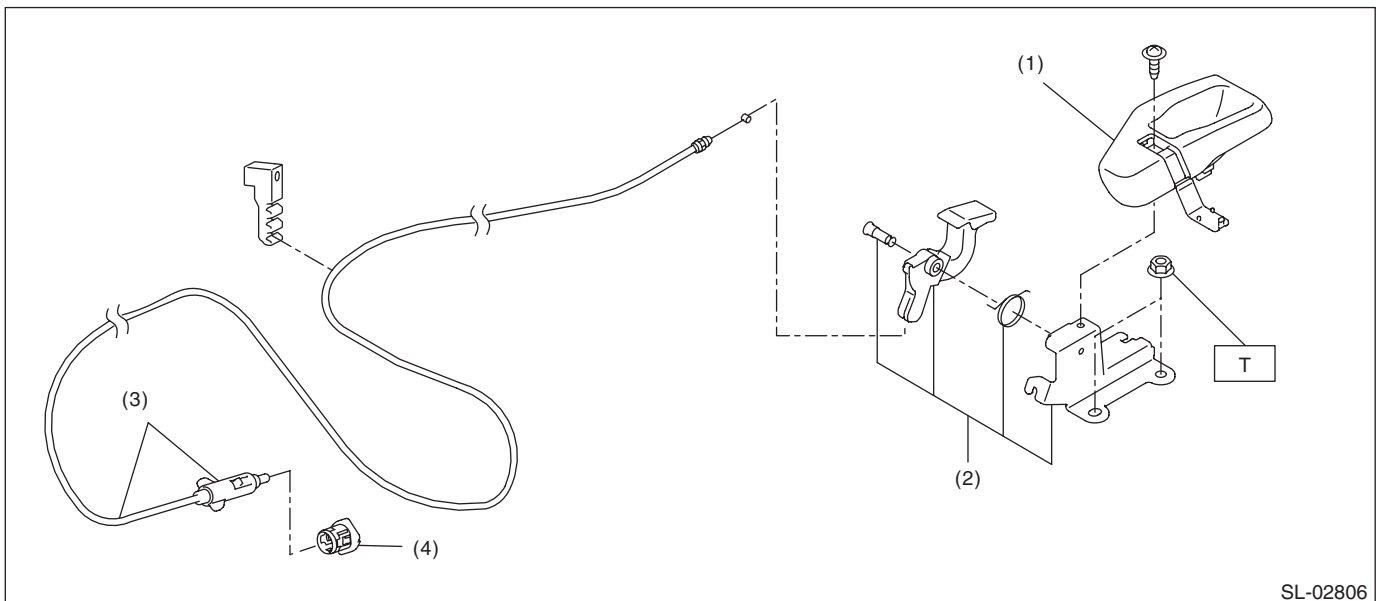
- | | |
|----------------------------|-----------------------------|
| (1) Lock ASSY - front hood | (3) Bracket - opener handle |
| (2) Cable - front hood | (4) Striker - front hood |

Tightening torque:N·m (kgf-m, ft-lb)

T1: 7.5 (0.76, 5.5)

T2: 33 (3.36, 24.3)

4. FUEL FLAP OPENER



SL-02806

- | | |
|--------------------------|-----------------------|
| (1) Cover - handle | (3) Cable ASSY - fuel |
| (2) Pull handle - opener | (4) Holder |

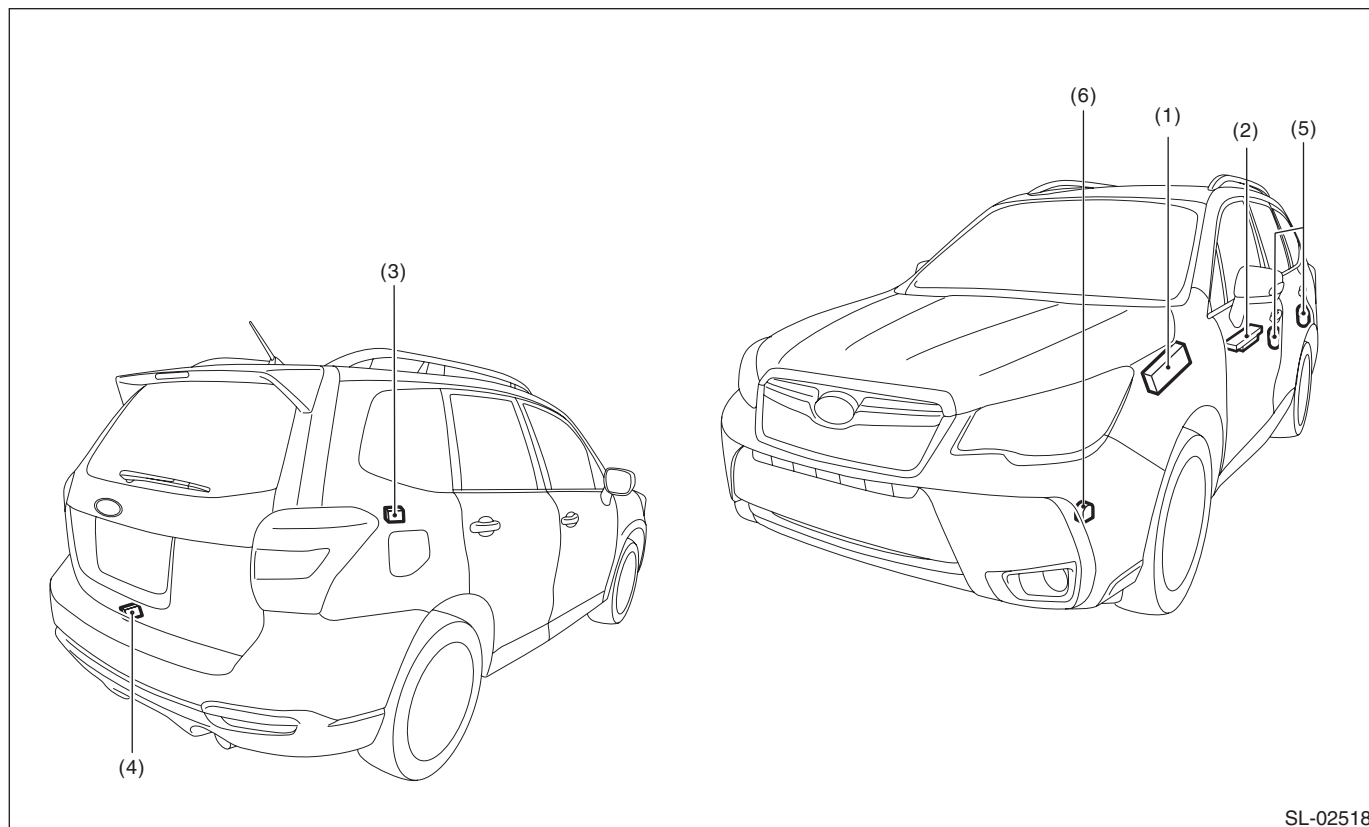
Tightening torque:N·m (kgf-m, ft-lb)

T: 7.5 (0.76, 5.5)

5. KEYLESS ENTRY SYSTEM

NOTE:

Except for model with keyless access.



SL-02518

(1) Body integrated unit

(2) Power window main switch

(3) Keyless entry control module

(4) Rear gate latch switch

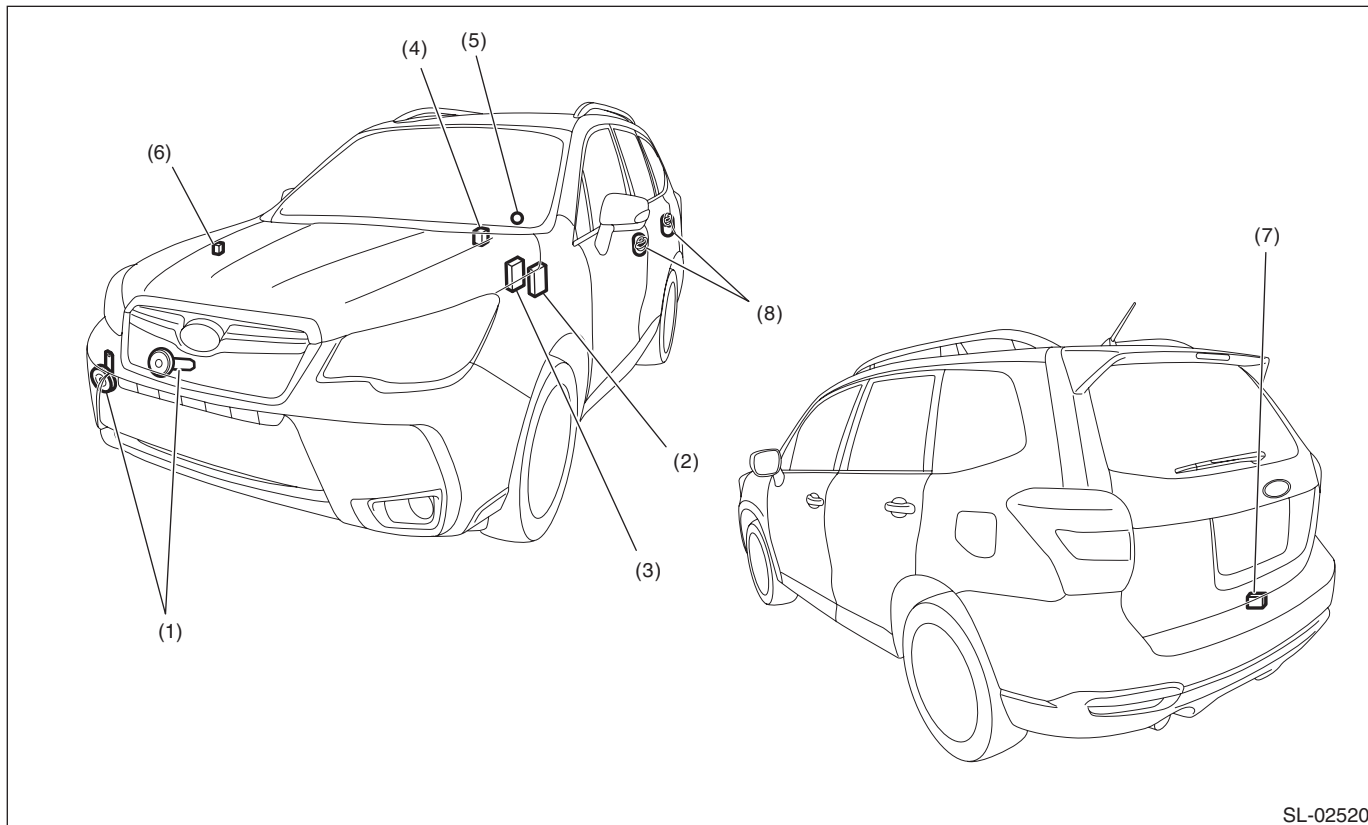
(5) Door switch

(6) Keyless buzzer

General Description

SECURITY AND LOCKS

6. SECURITY SYSTEM



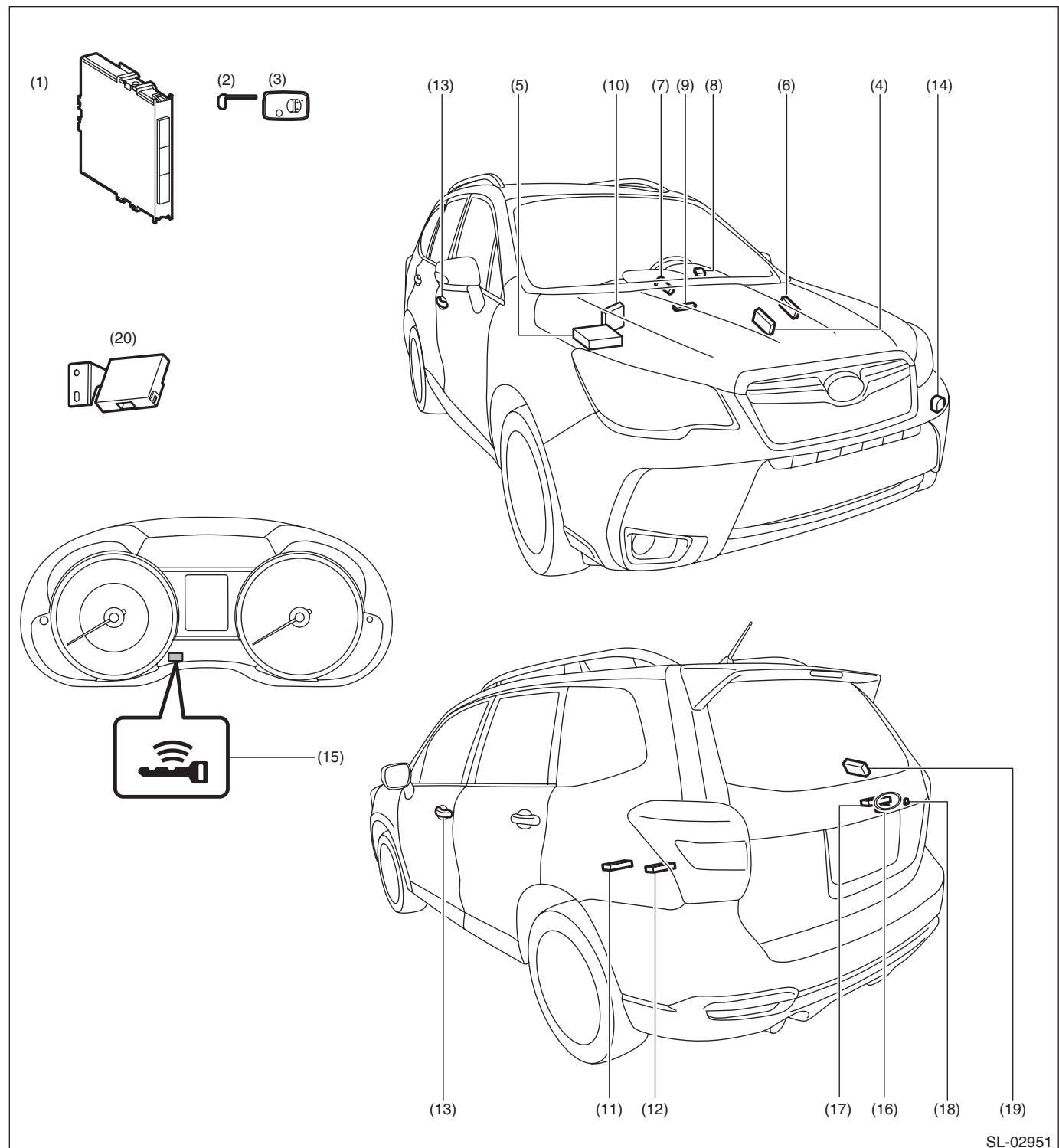
SL-02520

- | | | |
|---|---|----------------------------|
| (1) Horn | (4) Turn signal and hazard module | (7) Rear gate latch switch |
| (2) Body integrated unit | (5) Security indicator light (in combination meter) | (8) Door switch |
| (3) Impact sensor (driver's seat instrument panel side) (dealer option) | (6) Horn relay (in main fuse box) | |

7. KEYLESS ACCESS WITH PUSH BUTTON START SYSTEM

NOTE:

Except for model without keyless access.



SL-02951

General Description

SECURITY AND LOCKS

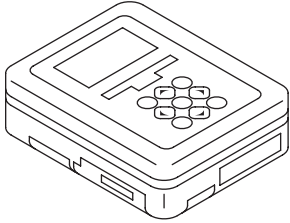
- | | | |
|---------------------------------|--|--|
| (1) Keyless access CM | (8) Steering lock CM | (15) Access key warning light |
| (2) Mechanical key | (9) Front interior antenna | (16) Rear gate opener button |
| (3) Access key | (10) ECM (non-turbo model) | (17) Rear exterior antenna |
| (4) TCM | (11) Center interior antenna | (18) Rear lock button |
| (5) ECM (turbo model) | (12) Rear interior antenna | (19) Receiver |
| (6) Body integrated unit | (13) Front outer handle (front exterior antenna) | (20) ID code box
(for C0 and C5 only) |
| | – Touch sensor (lock) | |
| | – Touch sensor (unlock) | |
| (7) Push button ignition switch | (14) Access buzzer | |

B: CAUTION

- Before disassembling or reassembling parts, always disconnect the battery ground cable from battery. When replacing the audio, control module and other parts provided with memory functions, record the memory contents before disconnecting the battery ground cable. Otherwise, the memory is cleared.
- Reassemble the parts in the reverse order of disassembly procedure unless otherwise indicated.
- Connect the connectors securely during reassembly.
- After reassembly, make sure that the each component operates normally.
- If any immobilizer related part has been replaced, make sure to register the immobilizer.
- Do not use any electrical test equipment on the airbag system wiring harnesses and connector circuits.
- Be careful not to damage the airbag system wiring harness when servicing the ignition key cylinder.
- If the steering wheel and steering angle sensor (steering roll connector) are removed, perform “VDC sensor midpoint setting mode” of the VDC. <Ref. to VDC-23, VDC SENSOR MIDPOINT SETTING MODE, ADJUSTMENT, VDC Control Module and Hydraulic Control Unit (VDCCM&H/U).>

C: PREPARATION TOOL

1. SPECIAL TOOL

ILLUSTRATION	TOOL NUMBER	DESCRIPTION	REMARKS
 ST1B022XU0	1B022XU0	SUBARU SELECT MONITOR III KIT	Used for troubleshooting the electrical system. NOTE: For detailed operation procedures of SUBARU SELECT MONITOR III KIT, refer to “PC application help for Subaru Select Monitor”.

2. GENERAL TOOL

TOOL NAME	REMARKS
Circuit tester	Used for measuring resistance and voltage.
Drill	Used for replacing ignition key lock.
Reverse tap	Used for replacing ignition key lock.
TORX® T30	Used for removing and installing door outer handle cover and frame assembly.
Clip remover	Used for removing trim clip.